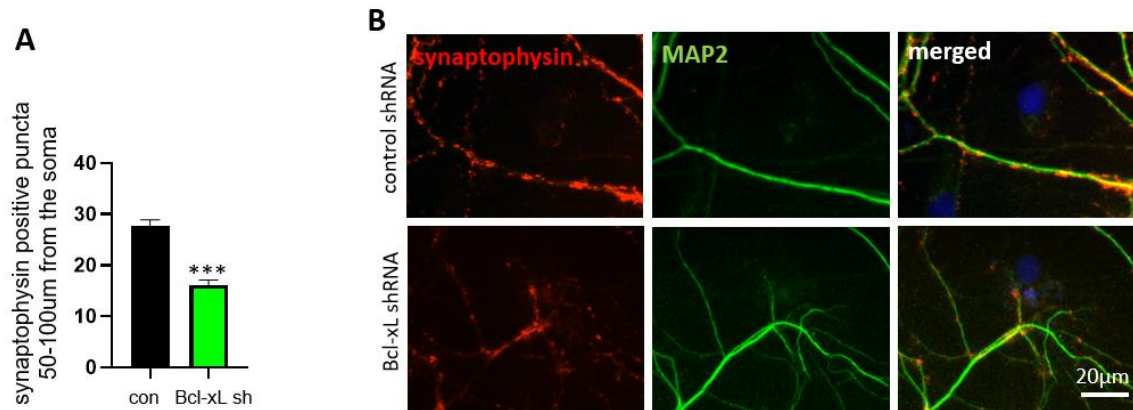


Supplement S1. Primary hippocampal neurons transduced with Bcl-xL shRNA decreased protein levels of Bcl-xL. Primary rat hippocampal neurons were transduced with control shRNA or Bcl-xL shRNA. Depletion of Bcl-xL protein levels in Bcl-xL shRNA transduced neurons was shown via immunoblotting.



Supplement S2. Bcl-xL depletion decreases synaptophysin positive puncta. Immunocytochemistry (**A-B**) was performed and synaptophysin positive puncta were counted from 50-100µm from the soma. Bcl-xL depleted neurons show a significant decrease in synaptophysin positive puncta (n=42). *** $P < 0.001$, two-tailed Student's t -test. Red, synaptophysin; Green, MAP2, Blue, DAPI, Scale bar=20µm.