

SUPPLEMENTARY MATERIALS

LIQUID CRYSTAL COATED YARNS FOR THERMO-RESPONSIVE TEXTILE STRUCTURES

Deña Mae Agra-Kooijman ¹, Md Mostafa ^{1,2}, Mourad Krifa ³, Linda Ohrn-McDaniel ³,
John L. West ^{1,2} and Antal Jákli ^{1,2,4}

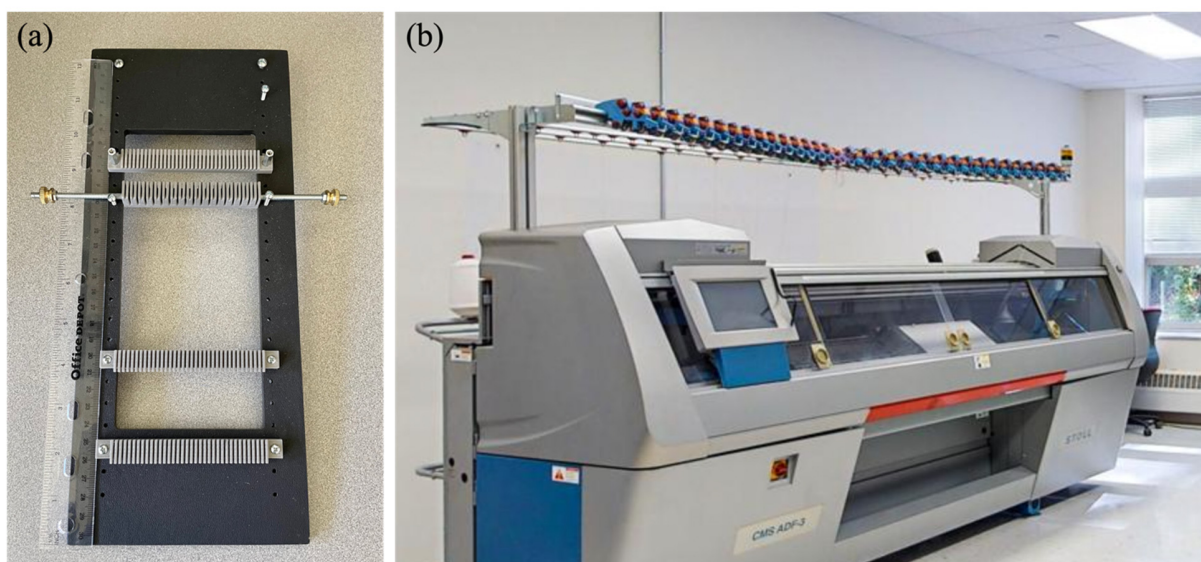


Figure S1. (a) in-house weaving equipment. (b) Knitting machine.

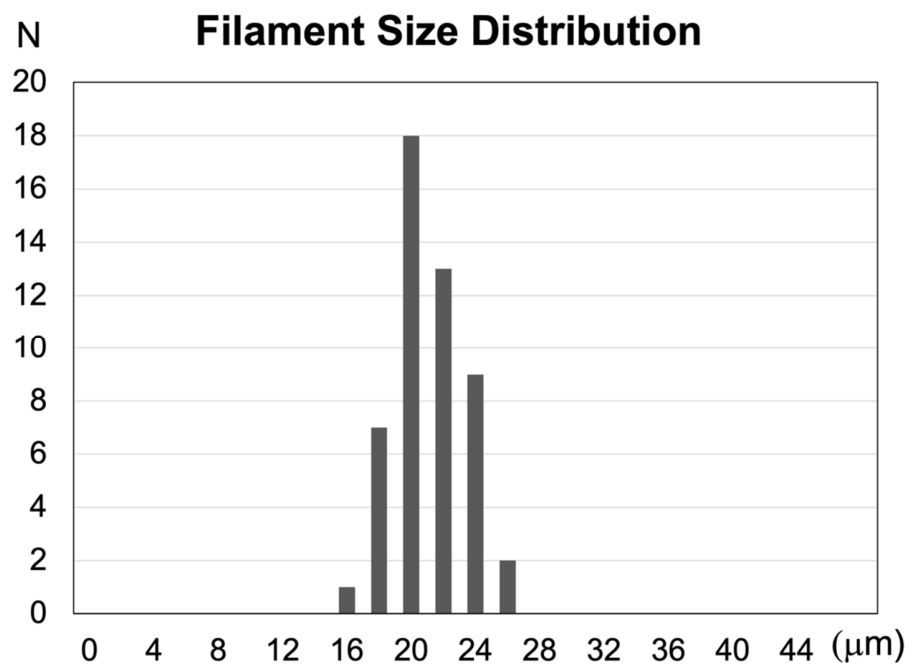


Figure S2. Filament size distribution.

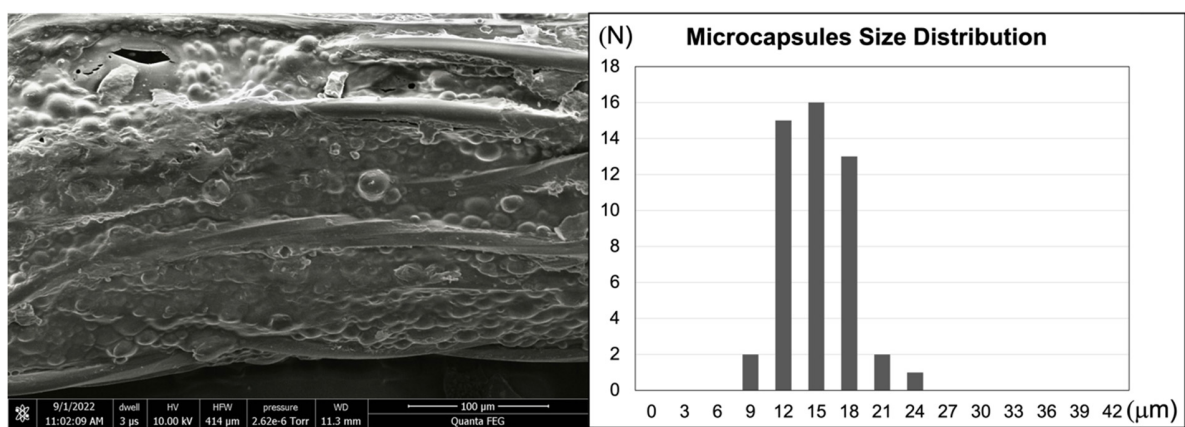


Figure S3. Microcapsules Size Distribution of the SFXC coat.

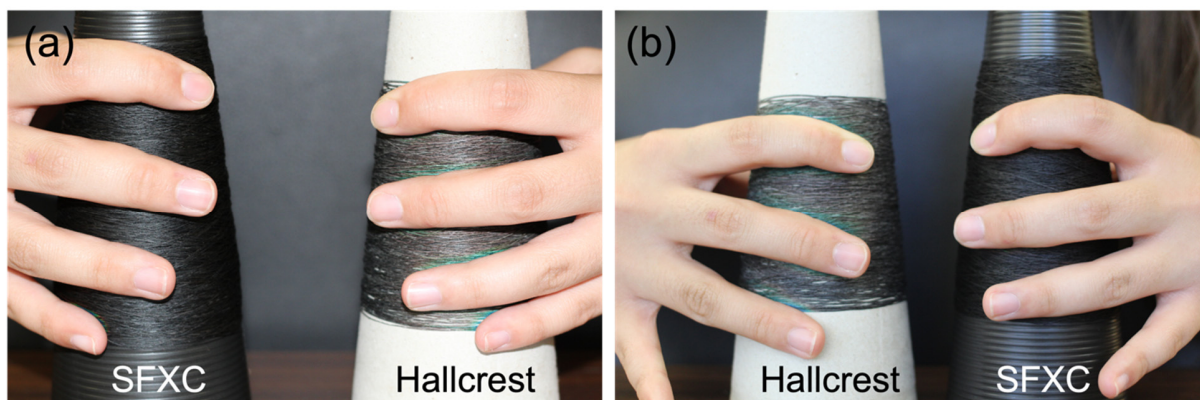


Figure S4. Comparison of the color response between SFXC and Hallcrest when position of the bobbins was switched from left to right. Showed that the hands were of equal or comparable temperatures.