

Supplementary Materials: Migration of TiO₂ from PET/TiO₂ Composite Films Used for Polymer-Laminated Steel Cans in Acidic Solution

Jingying Cui ^{1,*}, Jinyang Chen ^{1,*}, Jie Gu ², Xiaomin Hong ¹, Menghan Hong ¹, Zheyang Wu ² and Yu Hu ²

¹ Chemical Engineering and Technology, Shanghai University, Shanghai 200444, China

² Shanghai Bao Steel Packaging Co., Ltd., Shanghai 200949, China

* Correspondence: qtaacui@shu.edu.cn (J.C.); chenjy@shu.edu.cn (J.C.);

Tel.: +86-21-6613-7729 (Jinyang Chen)

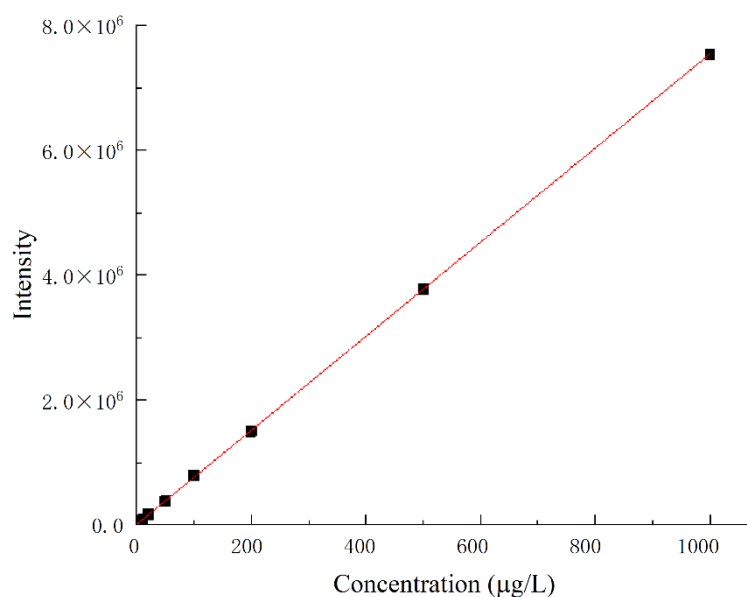


Figure S1. The standard curve of Ti measured by ICP-OES.