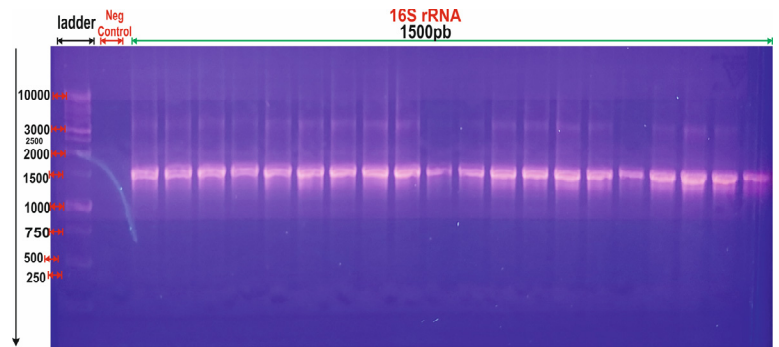
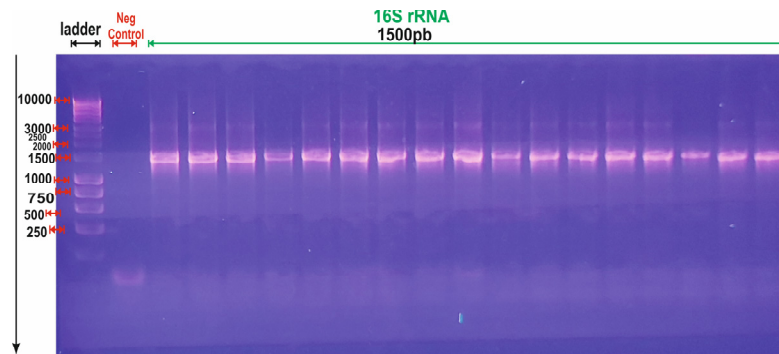


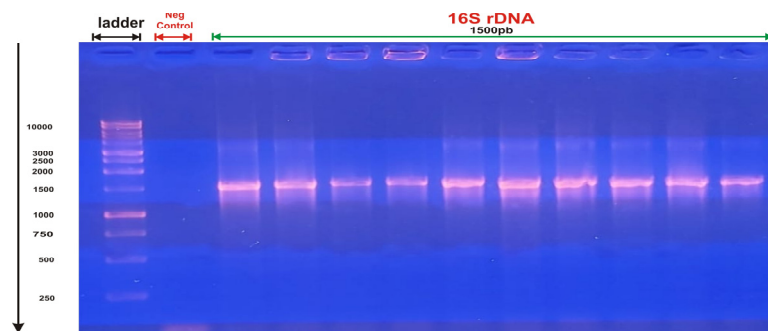
Supplementary data



(a)



(b)



(c)

Figure S1. Agarose gel electrophoresis of amplified 16S rRNA gene of *S. aureus* isolates. Lane ladder: 250 bp, other lanes: PCR products of isolates for: (a) 20 samples; (b) 17 samples; (c) 10 samples.

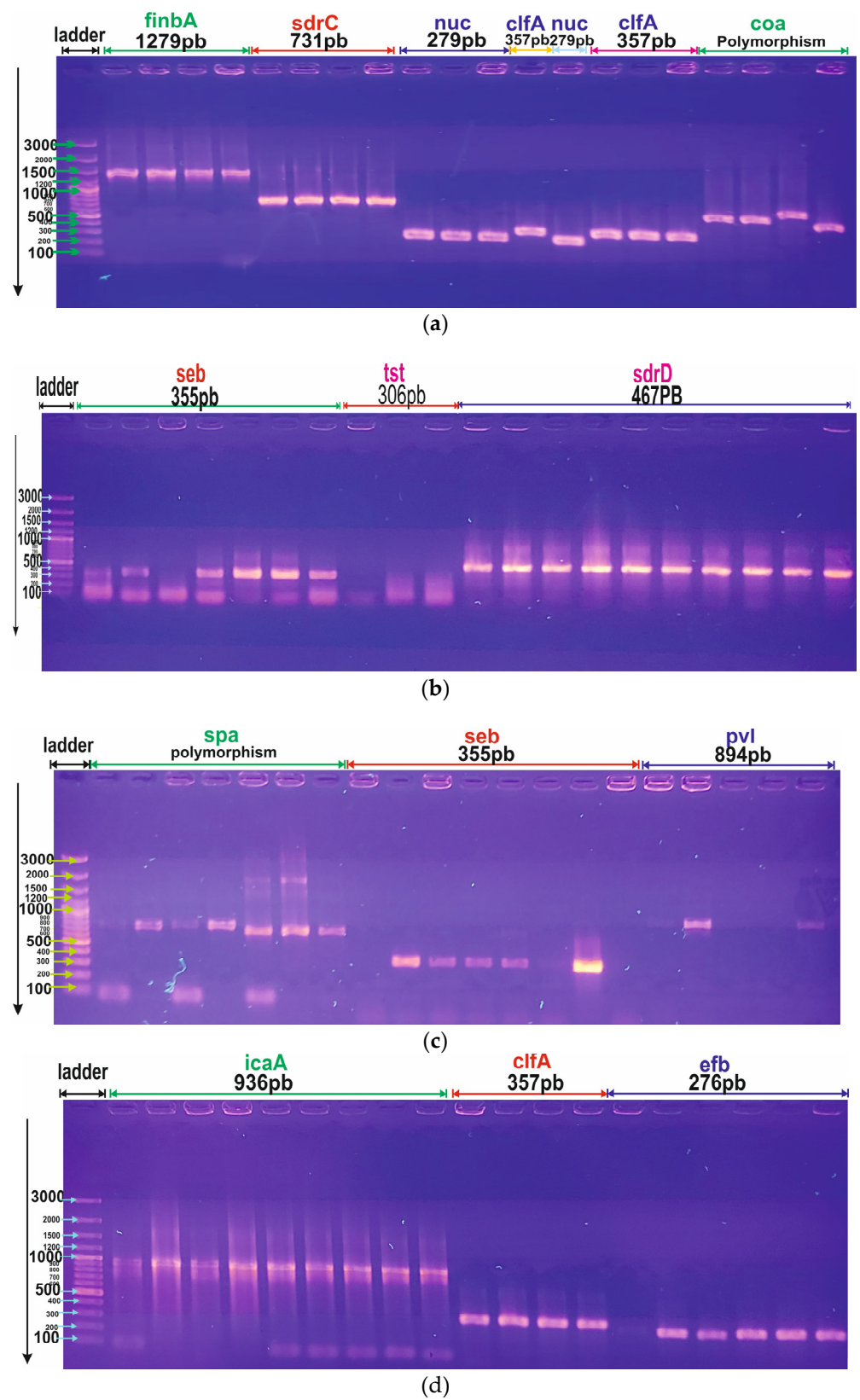
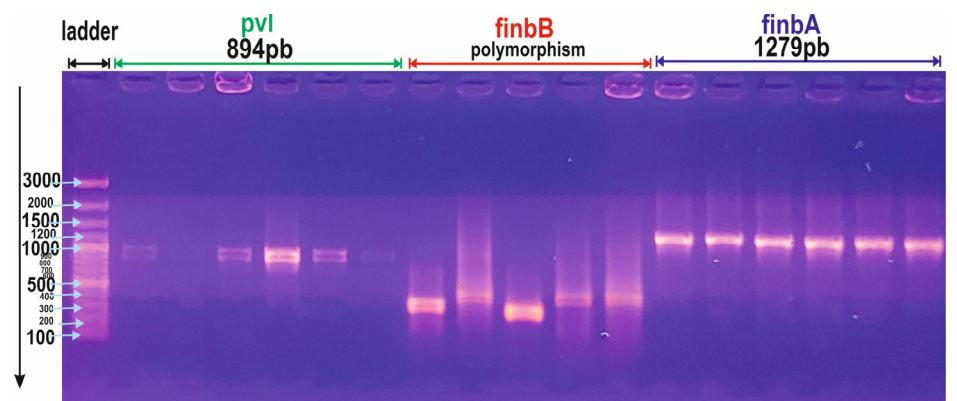
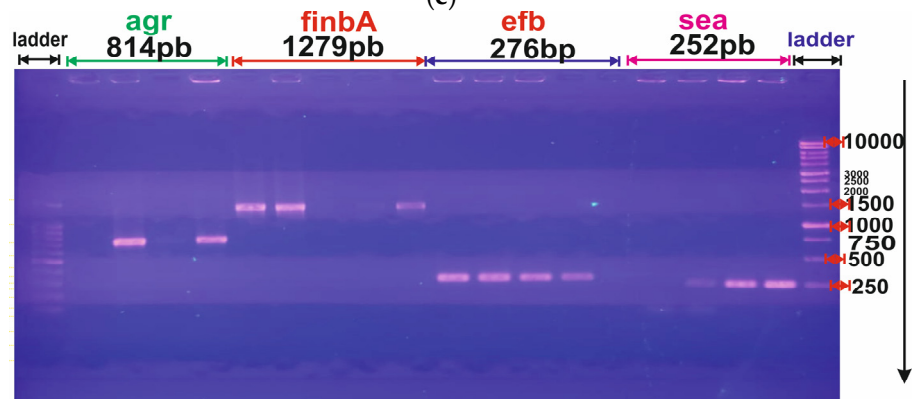


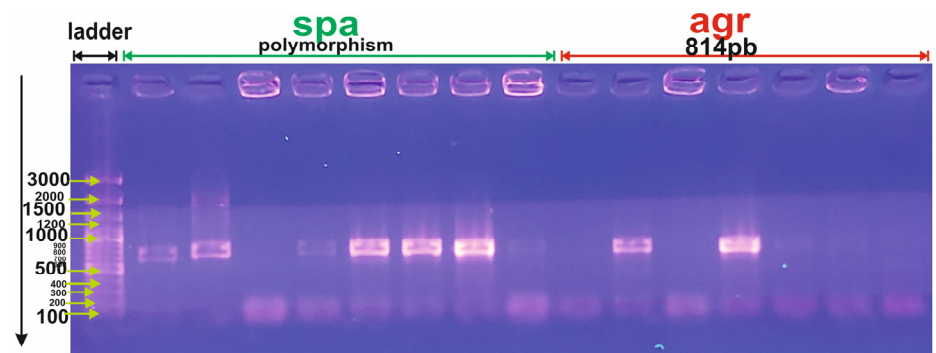
Figure S2. Cont.



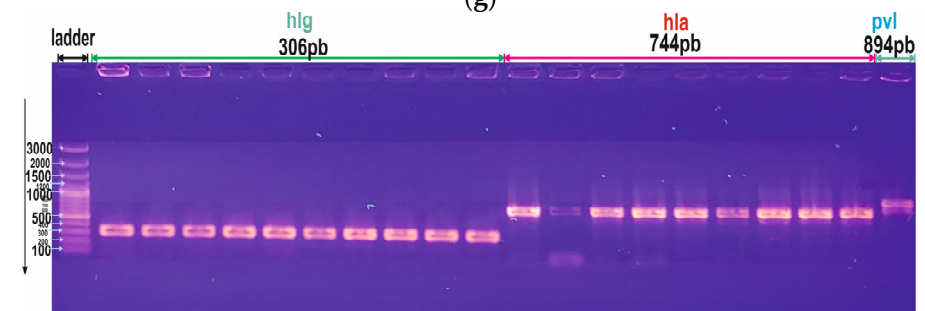
(e)



(f)



(g)



(h)

Figure S2. Cont.

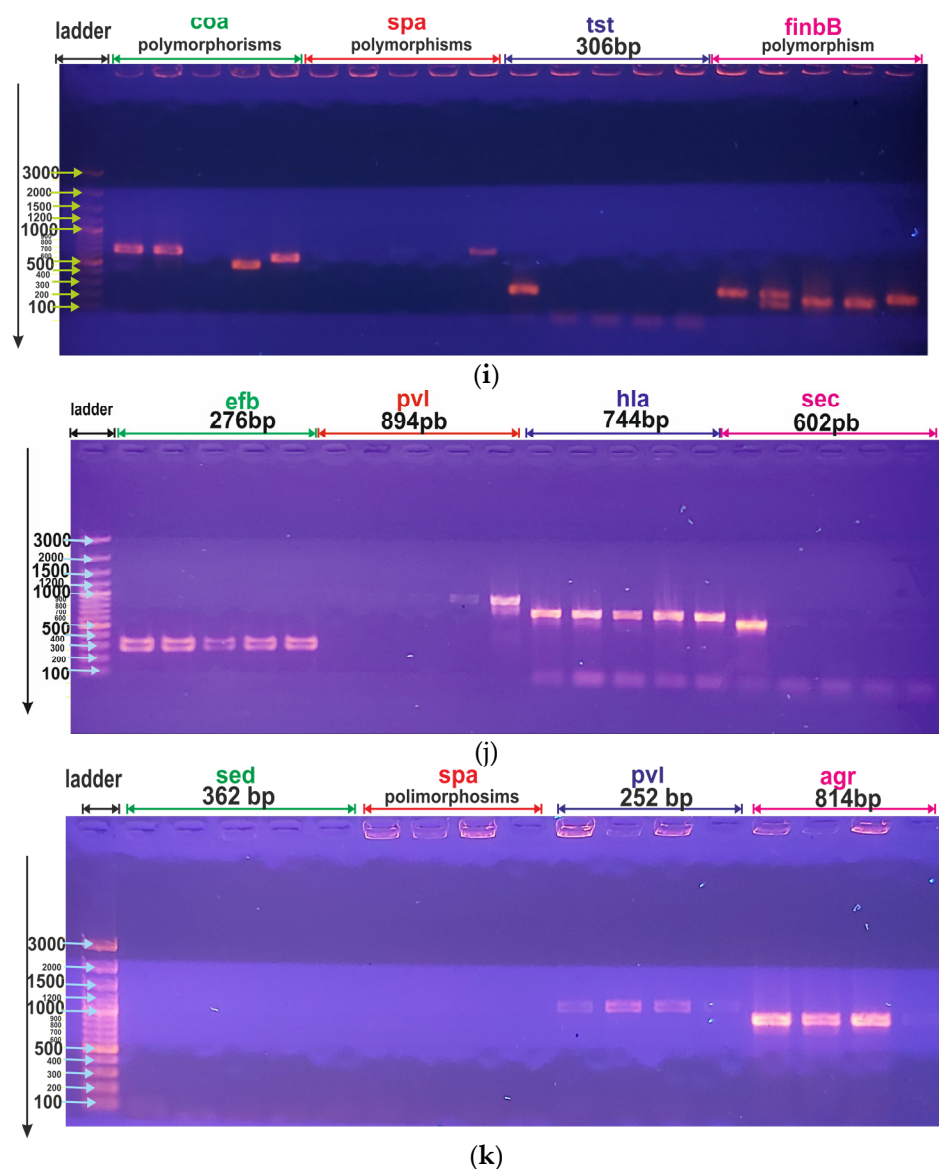


Figure S2. Agarose gel electrophoresis of the amplified adhesion-associated genes (*clfA*, *fnbA*, *fnbB*, *sdrC*, *sdrD*, and *spa*), enterotoxin A, B and C genes (*sea*, *seb*, *sec*) and other exotoxin genes (*hla*, *hlg*, *pvl* and *tst*), and others (*coa*, *efb*, *icaA*, *nuc* and *agr*) virulence genes. 25 μ l of the PCR product was separated in 1% agarose containing ethidium bromide solution (1 μ g/ml), and visualized using Gel documentation system. Lane ladder: 100bp; Other lanes: *S. aureus* strain for different virulence genes.

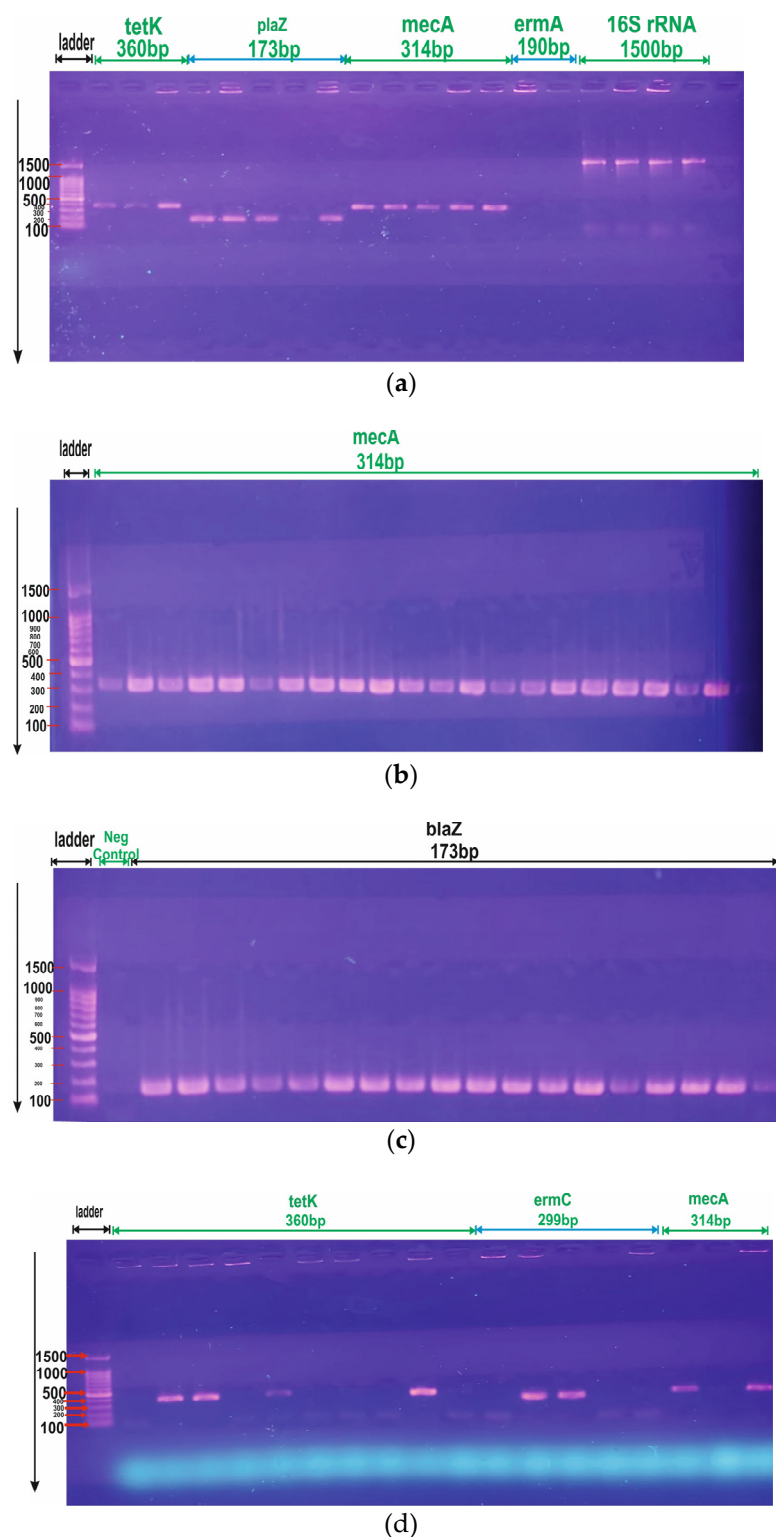


Figure S3. Agarose gel electrophoresis of the amplified *tetK*, *plaZ*, *mecA*, *ermA* and *ermC* antibiotics resistance genes. 25 μ l of the PCR product was separated in 1% agarose containing ethidium bromide solution (1 μ g/ml), and visualized using Gel documentation system. M: 100bp ladder; other lanes: *S. aureus* strains.