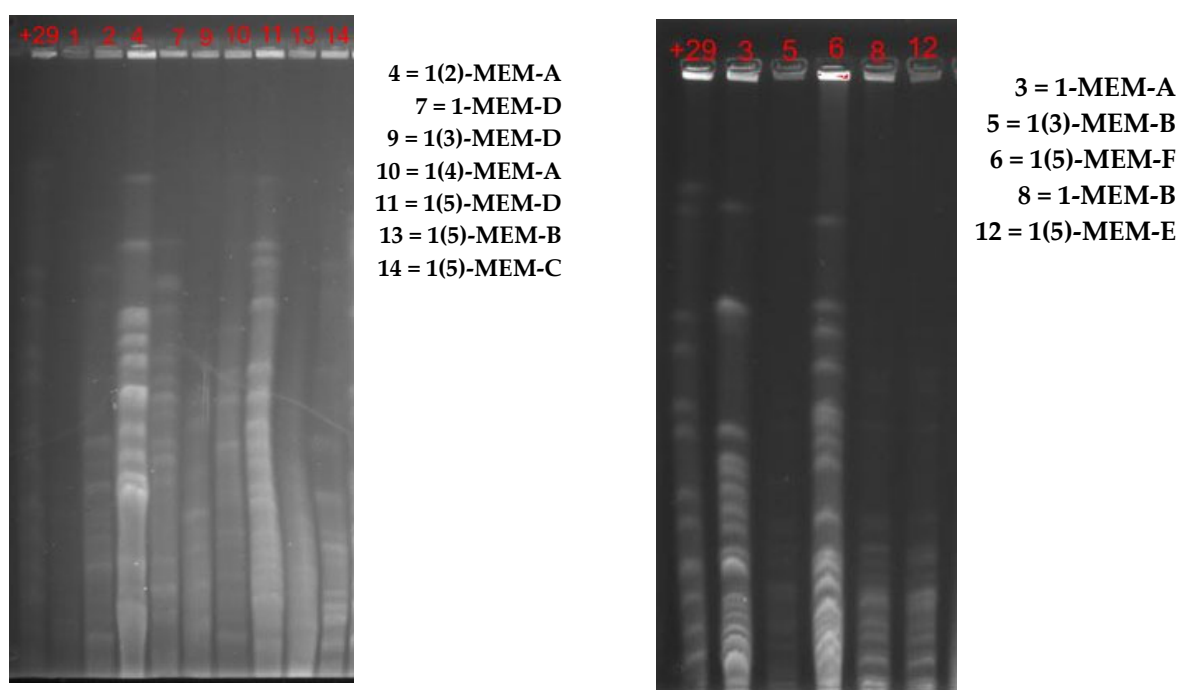


SUPPLEMENTAR MATERIAL



Was not possible to determine the PFGE pattern for the isolates 1(2)-MEM-C and 1(5)-MEM-A of *K. pneumoniae* and 1-MEM-D(2) of *E. coli*

Figure S1. PFGE pattern of KPC-producing *K. pneumoniae* 9 (a) and *E. coli* 6 (b) from river Douro waters.