

Supplementary Information

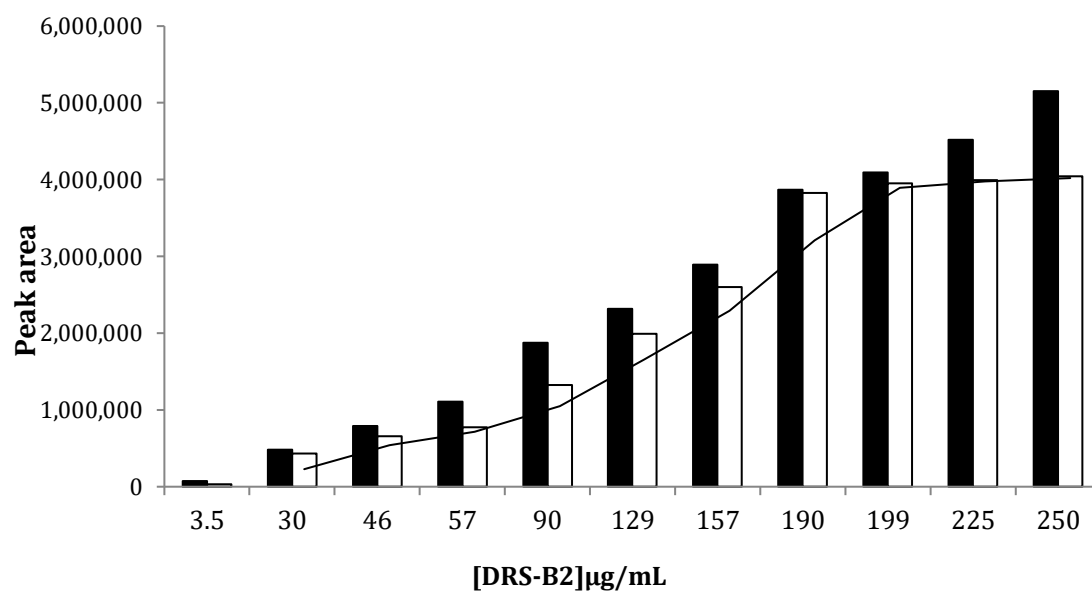


Figure S1: Variation of peak area of the different concentrations of DRS-B2 before (black rods) and after (white rods) dialysis. The concentration of Alg NPs was 500 µg/mL.

Table S1: Characterisation of the size and charge (zeta potential) of Alg NPs loaded or not with DRS-B2 at pH 6.3

Formulations	Size (nm)	Zeta Potential (ζ) (mv)
Alg NPs (500 µg/mL)	111.1	-22
Alg NPs (500 µg/mL) + DRS-B2 (40 µg/mL)	128	+0.9
DRSB2 (40 µg/mL)	-	+23