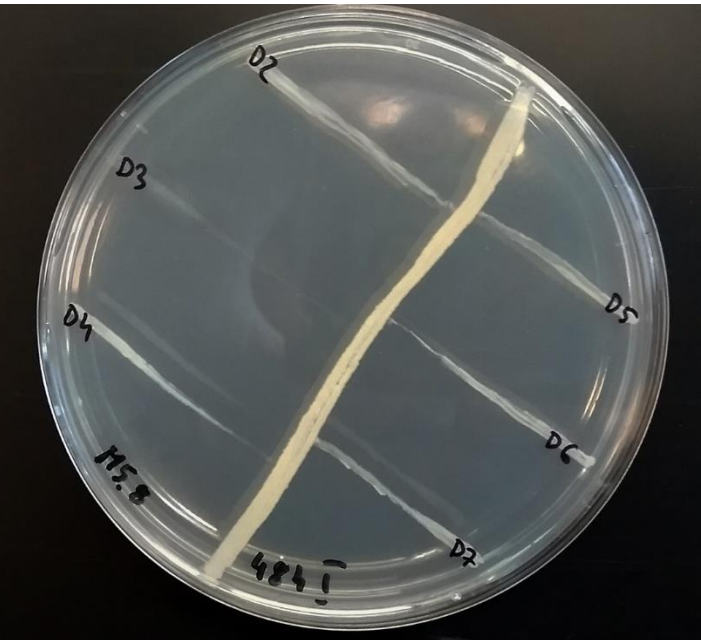

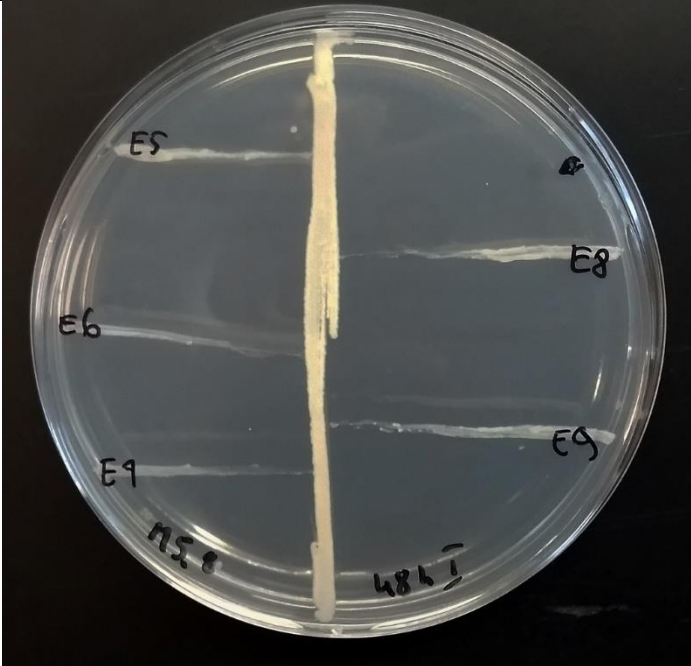
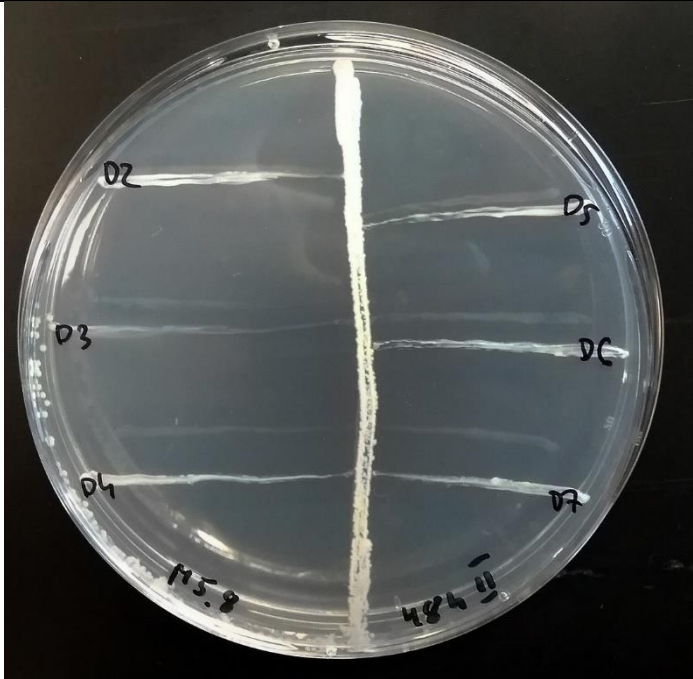


<p><i>Candida parapsilosis</i> D2 (Bruss Laboratories, Gdynia, Poland)</p> <p><i>Candida glabrata</i> D3 (Bruss Laboratories, Gdynia, Poland)</p> <p><i>Candida tropicalis</i> D4 (Bruss Laboratories, Gdynia, Poland)</p>		<p>M5_8 48h I</p>	<p><i>Candida dubliniensis</i> D5 (Bruss Laboratories, Gdynia, Poland)</p> <p><i>Candida albicans</i> D6 (Bruss Laboratories, Gdynia, Poland)</p> <p><i>Candida albicans</i> D7 (Medical University of Gdańsk)</p>
<p><i>Candida albicans</i> D8 (Medical University of Gdańsk)</p> <p><i>Candida albicans</i> D9 (University Clinical Centre in Gdańsk)</p> <p><i>Candida albicans</i> E1 (University Clinical Centre in Gdańsk)</p>		<p>M5_8 48h I</p>	<p><i>Candida guilliermondii</i> E2 (University Clinical Centre in Gdańsk)</p> <p><i>Candida guilliermondii</i> E3 (University Clinical Centre in Gdańsk)</p> <p><i>Candida albicans</i> E4 (University Clinical Centre in Gdańsk)</p>
<p><i>Candida albicans</i> E5 (University Clinical Centre in Gdańsk)</p> <p><i>Candida glabrata</i> E6 (University Clinical Centre in Gdańsk)</p> <p><i>Candida glabrata</i> E7 (University Clinical Centre in Gdańsk)</p>		<p>M5_8 48h I</p>	<p><i>Candida</i> sp. E8 (University Clinical Centre in Gdańsk)</p> <p><i>Candida</i> sp. E9 (University Clinical Centre in Gdańsk)</p>

Candida parapsilosis D2
(Bruss Laboratories, Gdynia,
Poland)

Candida glabrata D3 (Bruss
Laboratories, Gdynia,
Poland)

Candida tropicalis D4 (Bruss
Laboratories, Gdynia,
Poland)



M5_8 48h II

Candida dubliniensis D5
(Bruss Laboratories, Gdynia,
Poland)

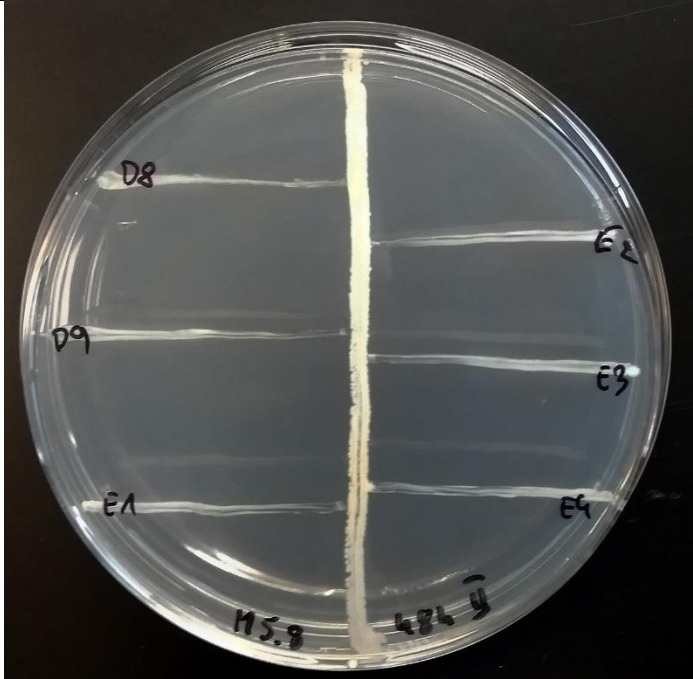
Candida albicans D6 (Bruss
Laboratories, Gdynia,
Poland)

Candida albicans D7
(Medical University of
Gdańsk)

Candida albicans D8
(Medical University of
Gdańsk)

Candida albicans D9
(University Clinical Centre in
Gdańsk)

Candida albicans E1
(University Clinical Centre in
Gdańsk)



M5_8 48h II

Candida guilliermondii E2
(University Clinical Centre in
Gdańsk)

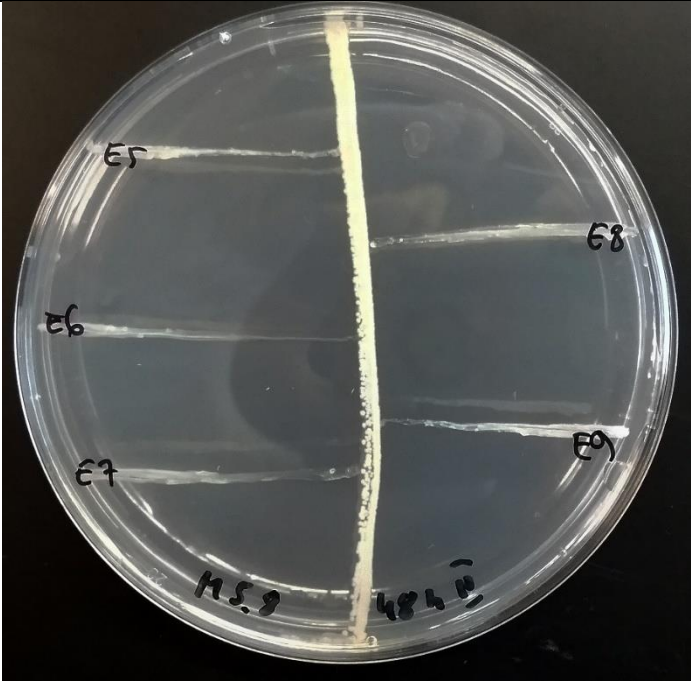
Candida guilliermondii E3
(University Clinical Centre in
Gdańsk)

Candida albicans E4
(University Clinical Centre in
Gdańsk)

Candida albicans E5
(University Clinical Centre in Gdańsk)

Candida glabrata E6
(University Clinical Centre in Gdańsk)

Candida glabrata E7
(University Clinical Centre in Gdańsk)



M5_8 48h II

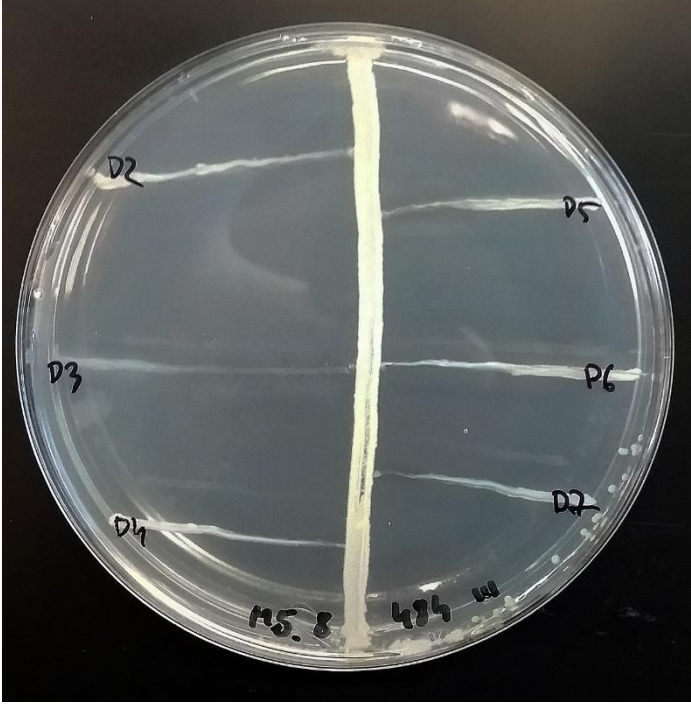
Candida sp. E8 (University Clinical Centre in Gdańsk)

Candida sp. E9 (University Clinical Centre in Gdańsk)

Candida parapsilosis D2
(Bruss Laboratories, Gdynia, Poland)

Candida glabrata D3 (Bruss Laboratories, Gdynia, Poland)

Candida tropicalis D4 (Bruss Laboratories, Gdynia, Poland)



M5_8 48h III

Candida dubliniensis D5
(Bruss Laboratories, Gdynia, Poland)

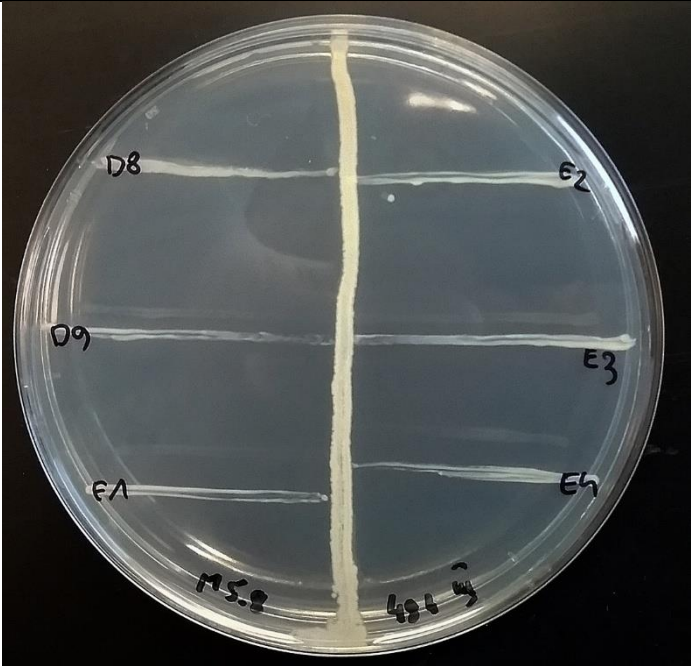
Candida albicans D6 (Bruss Laboratories, Gdynia, Poland)

Candida albicans D7
(Medical University of Gdańsk)

Candida albicans D8
(Medical University of Gdańsk)

Candida albicans D9
(University Clinical Centre in Gdańsk)

Candida albicans E1
(University Clinical Centre in Gdańsk)



M5_8 48h III

Candida guilliermondii E2
(University Clinical Centre in Gdańsk)

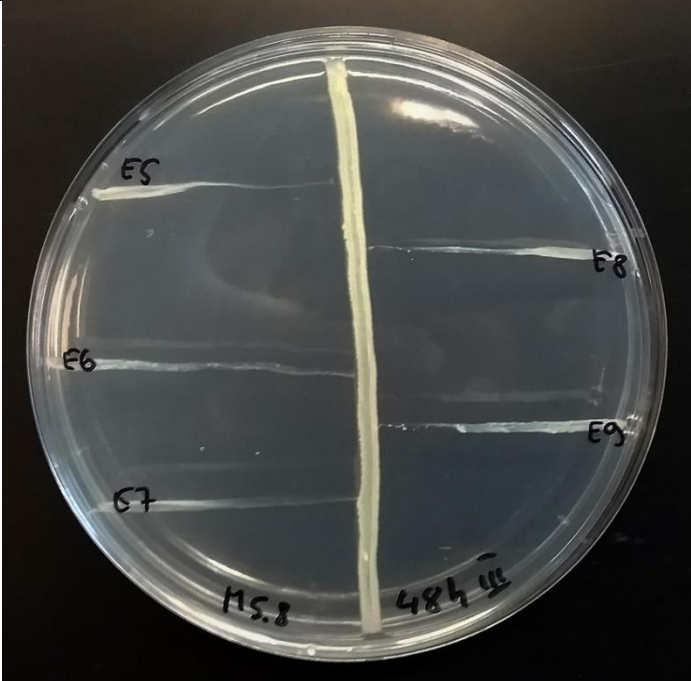
Candida guilliermondii E3
(University Clinical Centre in Gdańsk)

Candida albicans E4
(University Clinical Centre in Gdańsk)

Candida albicans E5
(University Clinical Centre in Gdańsk)

Candida glabrata E6
(University Clinical Centre in Gdańsk)

Candida glabrata E7
(University Clinical Centre in Gdańsk)



M5_8 48h III

Candida sp. E8 (University Clinical Centre in Gdańsk)

Candida sp. E9 (University Clinical Centre in Gdańsk)

Candida parapsilosis D2
(Bruss Laboratories, Gdynia,
Poland)

Candida glabrata D3 (Bruss
Laboratories, Gdynia,
Poland)

Candida tropicalis D4 (Bruss
Laboratories, Gdynia,
Poland)



M5_8 72h I

Candida dubliniensis D5
(Bruss Laboratories, Gdynia,
Poland)

Candida albicans D6 (Bruss
Laboratories, Gdynia,
Poland)

Candida albicans D7
(Medical University of
Gdańsk)

Candida albicans D8
(Medical University of
Gdańsk)

Candida albicans D9
(University Clinical Centre in
Gdańsk)

Candida albicans E1
(University Clinical Centre in
Gdańsk)



M5_8 72h I

Candida guilliermondii E2
(University Clinical Centre in
Gdańsk)

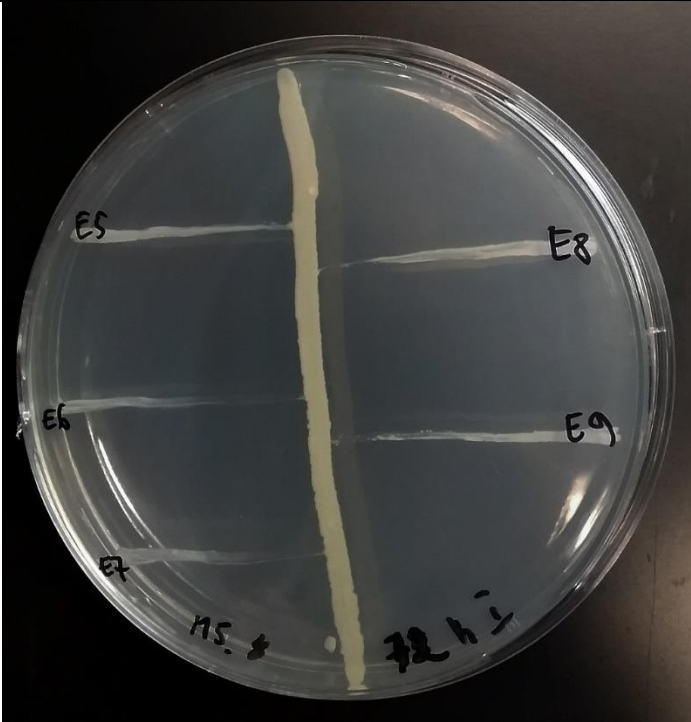
Candida guilliermondii E3
(University Clinical Centre in
Gdańsk)

Candida albicans E4
(University Clinical Centre in
Gdańsk)

Candida albicans E5
(University Clinical Centre in Gdańsk)

Candida glabrata E6
(University Clinical Centre in Gdańsk)

Candida glabrata E7
(University Clinical Centre in Gdańsk)



M5_8 72h I

Candida sp. E8 (University Clinical Centre in Gdańsk)

Candida sp. E9 (University Clinical Centre in Gdańsk)

Candida parapsilosis D2
(Bruss Laboratories, Gdynia, Poland)

Candida glabrata D3 (Bruss Laboratories, Gdynia, Poland)

Candida tropicalis D4 (Bruss Laboratories, Gdynia, Poland)



M5_8 72h II

Candida dubliniensis D5
(Bruss Laboratories, Gdynia, Poland)

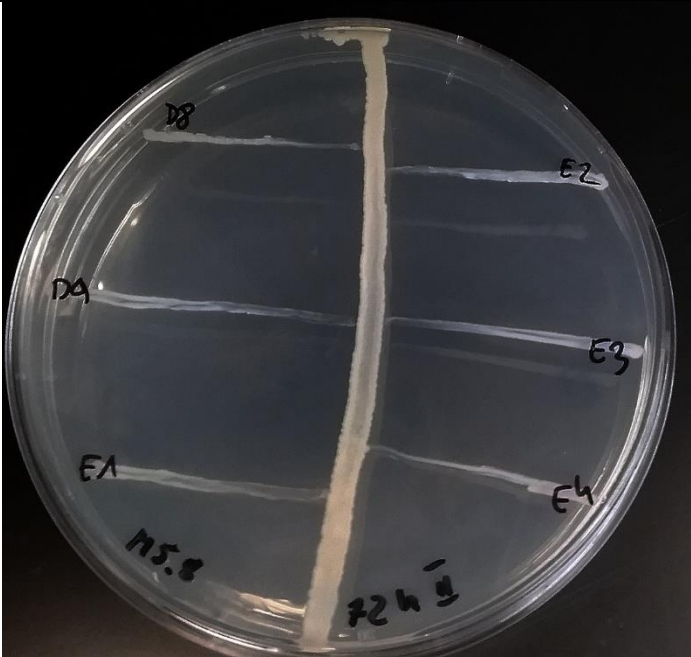
Candida albicans D6 (Bruss Laboratories, Gdynia, Poland)

Candida albicans D7
(Medical University of Gdańsk)

Candida albicans D8
(Medical University of Gdańsk)

Candida albicans D9
(University Clinical Centre in Gdańsk)

Candida albicans E1
(University Clinical Centre in Gdańsk)



M5_8 72h II

Candida guilliermondii E2
(University Clinical Centre in Gdańsk)

Candida guilliermondii E3
(University Clinical Centre in Gdańsk)

Candida albicans E4
(University Clinical Centre in Gdańsk)

Candida albicans E5
(University Clinical Centre in Gdańsk)

Candida glabrata E6
(University Clinical Centre in Gdańsk)

Candida glabrata E7
(University Clinical Centre in Gdańsk)



M5_8 72h II

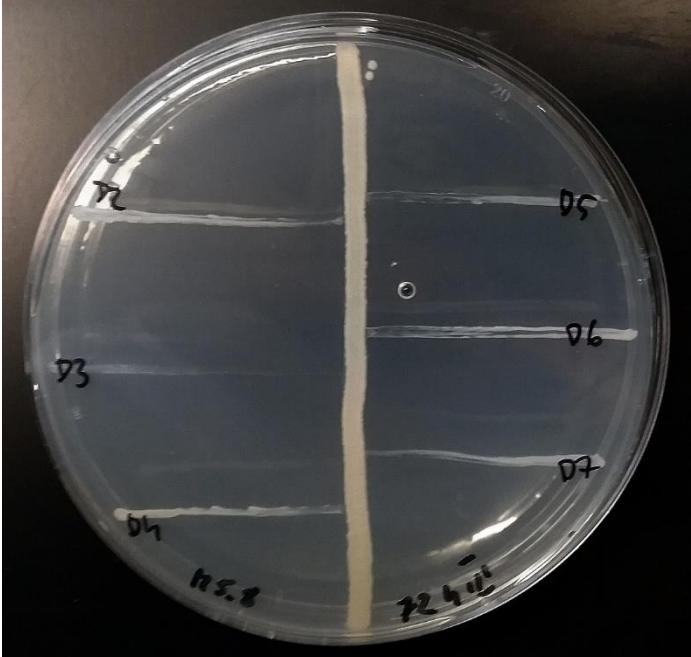
Candida sp. E8 (University Clinical Centre in Gdańsk)

Candida sp. E9 (University Clinical Centre in Gdańsk)

Candida parapsilosis D2
(Bruss Laboratories, Gdynia, Poland)

Candida glabrata D3 (Bruss Laboratories, Gdynia, Poland)

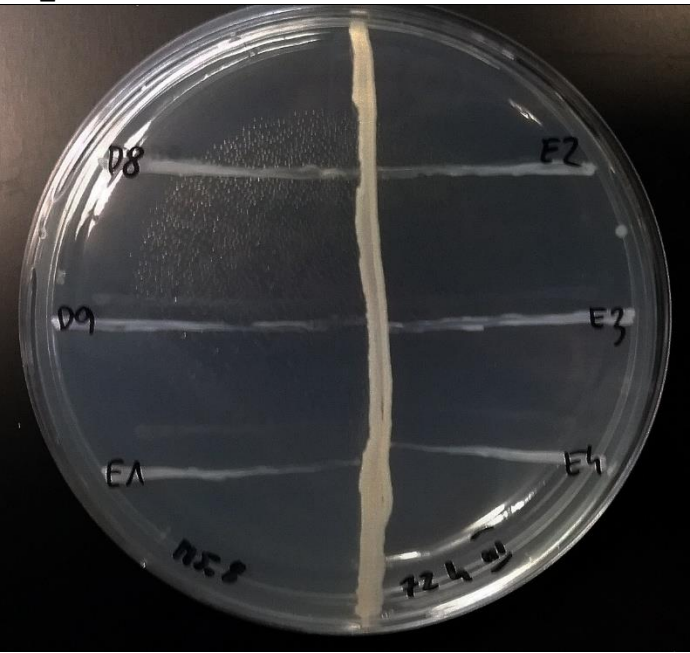
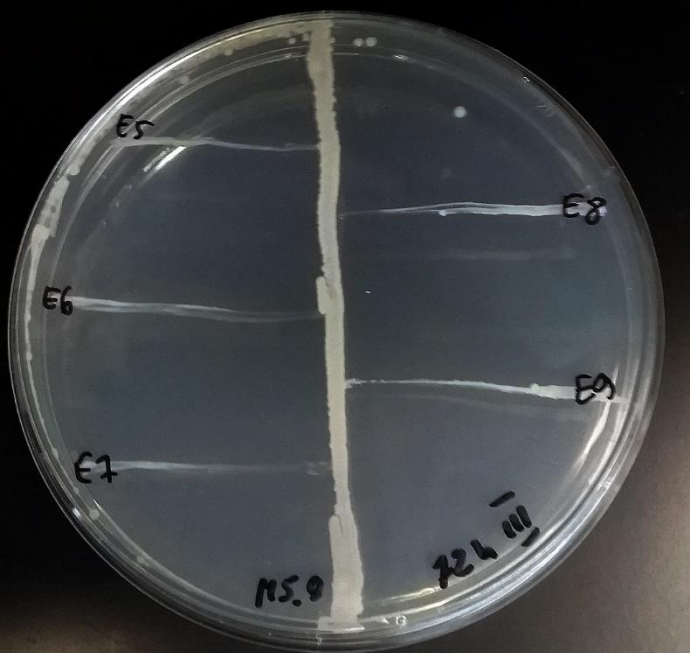
Candida tropicalis D4 (Bruss Laboratories, Gdynia, Poland)



Candida dubliniensis D5
(Bruss Laboratories, Gdynia, Poland)

Candida albicans D6 (Bruss Laboratories, Gdynia, Poland)

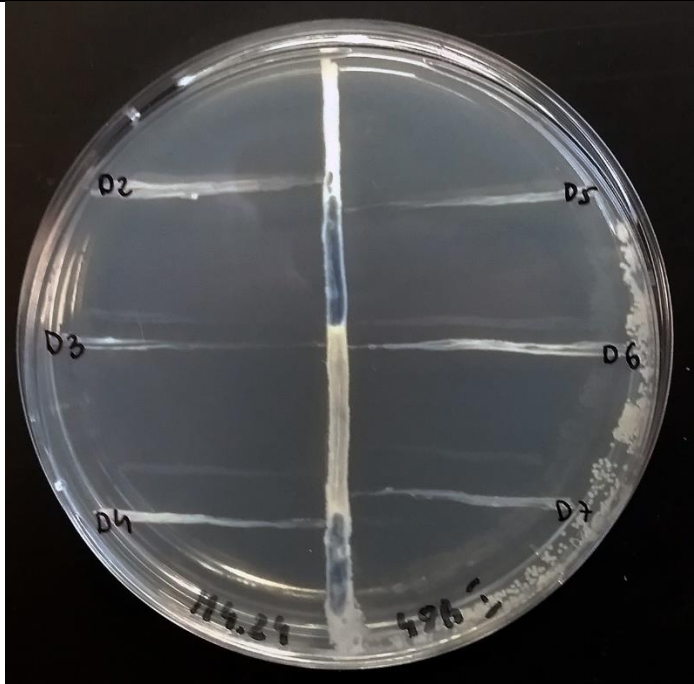
Candida albicans D7
(Medical University of Gdańsk)

	M5_8 7h III	
<p><i>Candida albicans</i> D8 (Medical University of Gdańsk)</p> <p><i>Candida albicans</i> D9 (University Clinical Centre in Gdańsk)</p> <p><i>Candida albicans</i> E1 (University Clinical Centre in Gdańsk)</p>		<p><i>Candida guilliermondii</i> E2 (University Clinical Centre in Gdańsk)</p> <p><i>Candida guilliermondii</i> E3 (University Clinical Centre in Gdańsk)</p> <p><i>Candida albicans</i> E4 (University Clinical Centre in Gdańsk)</p>
<p><i>Candida albicans</i> E5 (University Clinical Centre in Gdańsk)</p> <p><i>Candida glabrata</i> E6 (University Clinical Centre in Gdańsk)</p> <p><i>Candida glabrata</i> E7 (University Clinical Centre in Gdańsk)</p>		<p><i>Candida</i> sp. E8 (University Clinical Centre in Gdańsk)</p> <p><i>Candida</i> sp. E9 (University Clinical Centre in Gdańsk)</p>
	M5_8 72h III	

Candida parapsilosis D2
(Bruss Laboratories, Gdynia,
Poland)

Candida glabrata D3 (Bruss
Laboratories, Gdynia,
Poland)

Candida tropicalis D4 (Bruss
Laboratories, Gdynia,
Poland)



M4_24 48h I

Candida dubliniensis D5
(Bruss Laboratories, Gdynia,
Poland)

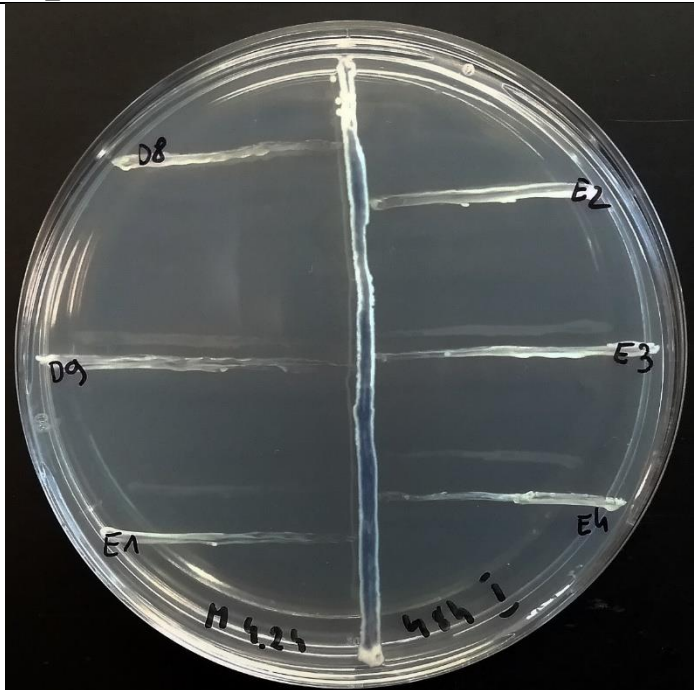
Candida albicans D6 (Bruss
Laboratories, Gdynia,
Poland)

Candida albicans D7
(Medical University of
Gdańsk)

Candida albicans D8
(Medical University of
Gdańsk)

Candida albicans D9
(University Clinical Centre in
Gdańsk)

Candida albicans E1
(University Clinical Centre in
Gdańsk)



M4_24 48h I

Candida guilliermondii E2
(University Clinical Centre in
Gdańsk)

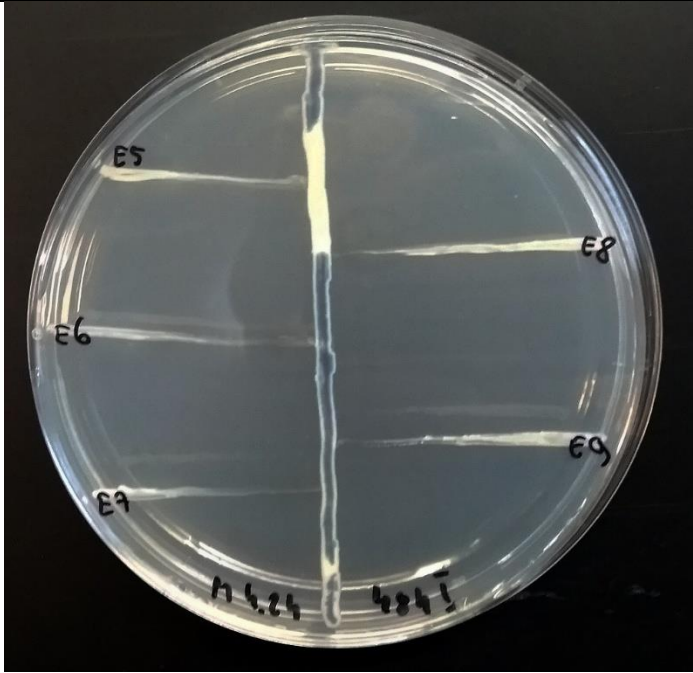
Candida guilliermondii E3
(University Clinical Centre in
Gdańsk)

Candida albicans E4
(University Clinical Centre in
Gdańsk)

Candida albicans E5
(University Clinical Centre in Gdańsk)

Candida glabrata E6
(University Clinical Centre in Gdańsk)

Candida glabrata E7
(University Clinical Centre in Gdańsk)



M4_24 48h I

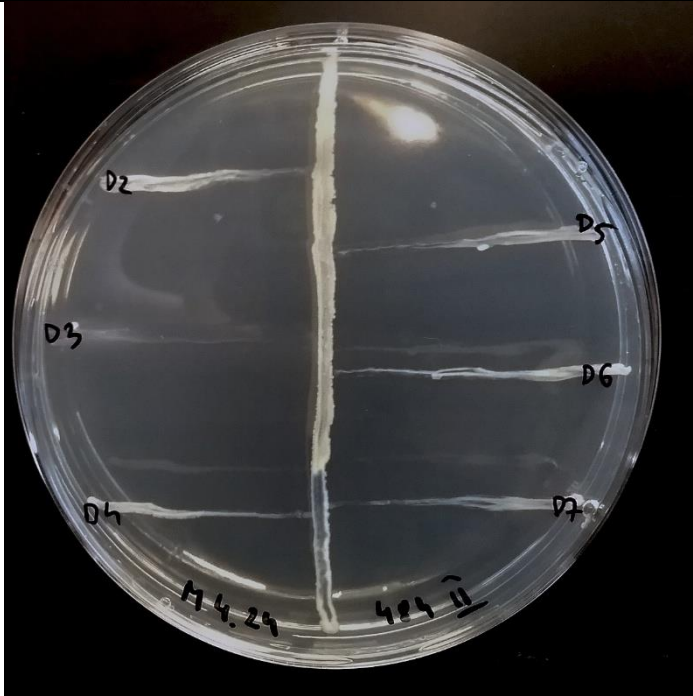
Candida sp. E8 (University Clinical Centre in Gdańsk)

Candida sp. E9 (University Clinical Centre in Gdańsk)

Candida parapsilosis D2
(Bruss Laboratories, Gdynia, Poland)

Candida glabrata D3 (Bruss Laboratories, Gdynia, Poland)

Candida tropicalis D4 (Bruss Laboratories, Gdynia, Poland)



M4_24 48h II

Candida dubliniensis D5
(Bruss Laboratories, Gdynia, Poland)

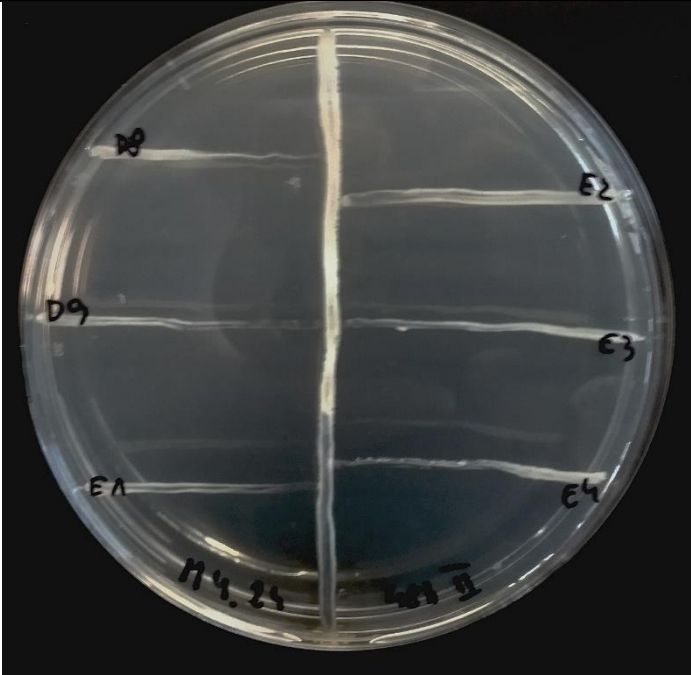
Candida albicans D6 (Bruss Laboratories, Gdynia, Poland)

Candida albicans D7
(Medical University of Gdańsk)

Candida albicans D8
(Medical University of Gdańsk)

Candida albicans D9
(University Clinical Centre in Gdańsk)

Candida albicans E1
(University Clinical Centre in Gdańsk)



M4_24 48h II

Candida guilliermondii E2
(University Clinical Centre in Gdańsk)

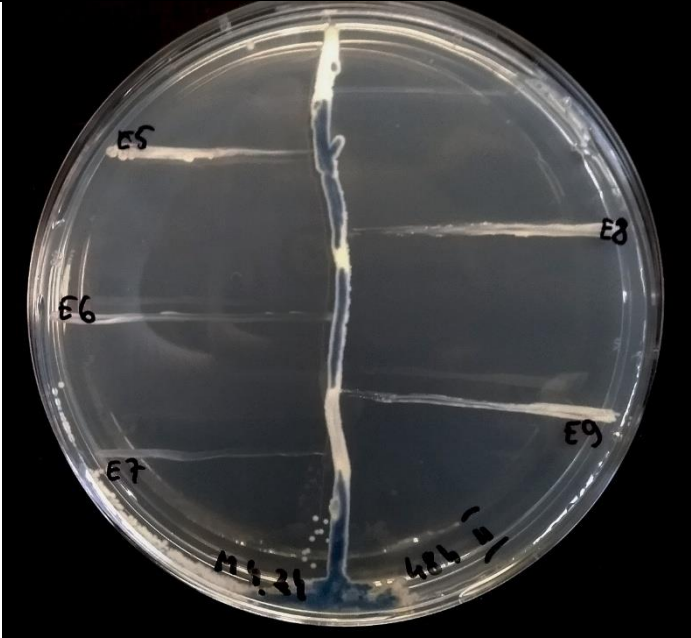
Candida guilliermondii E3
(University Clinical Centre in Gdańsk)

Candida albicans E4
(University Clinical Centre in Gdańsk)

Candida albicans E5
(University Clinical Centre in Gdańsk)

Candida glabrata E6
(University Clinical Centre in Gdańsk)

Candida glabrata E7
(University Clinical Centre in Gdańsk)



M4_24 48h II

Candida sp. E8 (University Clinical Centre in Gdańsk)

Candida sp. E9 (University Clinical Centre in Gdańsk)

Candida parapsilosis D2
(Bruss Laboratories, Gdynia,
Poland)

Candida glabrata D3 (Bruss
Laboratories, Gdynia,
Poland)

Candida tropicalis D4 (Bruss
Laboratories, Gdynia,
Poland)



M4_24 48h III

Candida dubliniensis D5
(Bruss Laboratories, Gdynia,
Poland)

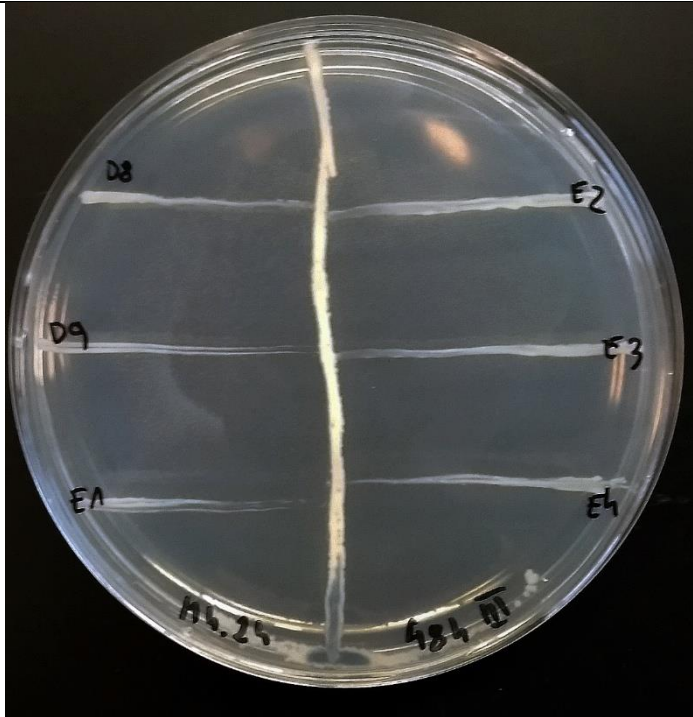
Candida albicans D6 (Bruss
Laboratories, Gdynia,
Poland)

Candida albicans D7
(Medical University of
Gdańsk)

Candida albicans D8
(Medical University of
Gdańsk)

Candida albicans D9
(University Clinical Centre in
Gdańsk)

Candida albicans E1
(University Clinical Centre in
Gdańsk)



M4_24 48h III

Candida guilliermondii E2
(University Clinical Centre in
Gdańsk)

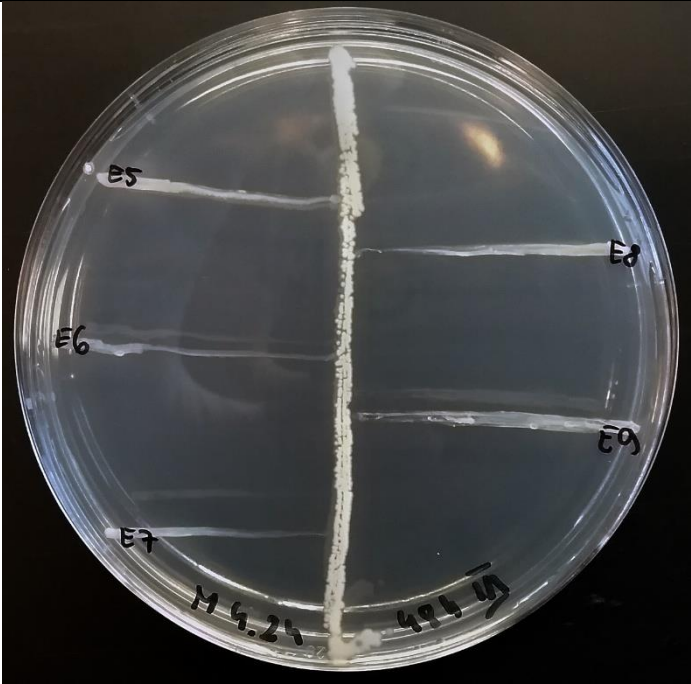
Candida guilliermondii E3
(University Clinical Centre in
Gdańsk)

Candida albicans E4
(University Clinical Centre in
Gdańsk)

Candida albicans E5
(University Clinical Centre in Gdańsk)

Candida glabrata E6
(University Clinical Centre in Gdańsk)

Candida glabrata E7
(University Clinical Centre in Gdańsk)



M4_24 48h III

Candida sp. E8 (University Clinical Centre in Gdańsk)

Candida sp. E9 (University Clinical Centre in Gdańsk)

Candida parapsilosis D2
(Bruss Laboratories, Gdynia, Poland)

Candida glabrata D3 (Bruss Laboratories, Gdynia, Poland)

Candida tropicalis D4 (Bruss Laboratories, Gdynia, Poland)



M4_24 72h I

Candida dubliniensis D5
(Bruss Laboratories, Gdynia, Poland)

Candida albicans D6 (Bruss Laboratories, Gdynia, Poland)

Candida albicans D7
(Medical University of Gdańsk)

Candida albicans D8
(Medical University of Gdańsk)

Candida albicans D9
(University Clinical Centre in Gdańsk)

Candida albicans E1
(University Clinical Centre in Gdańsk)



M4_24 72h I

Candida guilliermondii E2
(University Clinical Centre in Gdańsk)

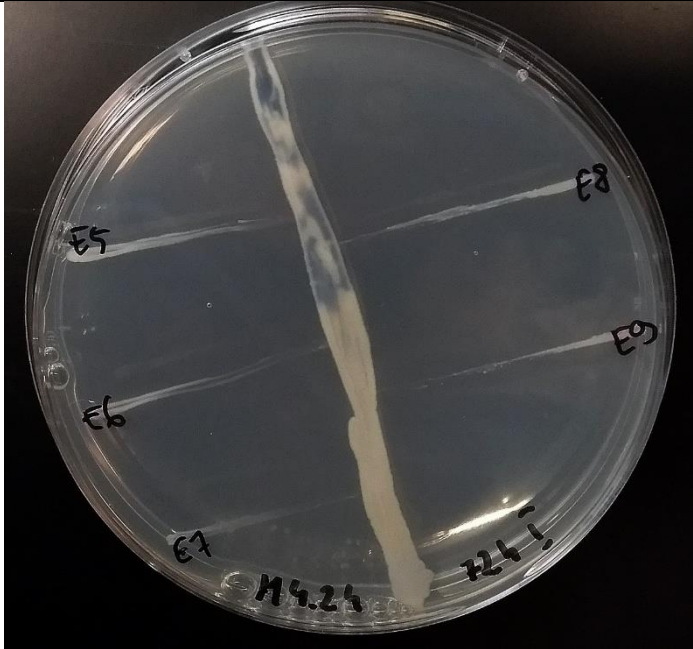
Candida guilliermondii E3
(University Clinical Centre in Gdańsk)

Candida albicans E4
(University Clinical Centre in Gdańsk)

Candida albicans E5
(University Clinical Centre in Gdańsk)

Candida glabrata E6
(University Clinical Centre in Gdańsk)

Candida glabrata E7
(University Clinical Centre in Gdańsk)



M4_24 72h I

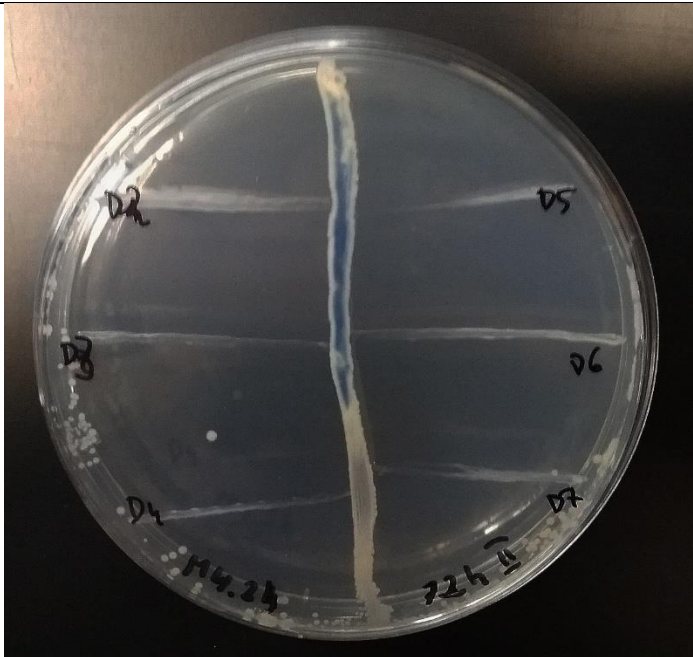
Candida sp. E8 (University Clinical Centre in Gdańsk)

Candida sp. E9 (University Clinical Centre in Gdańsk)

Candida parapsilosis D2
(Bruss Laboratories, Gdynia, Poland)

Candida glabrata D3 (Bruss Laboratories, Gdynia, Poland)

Candida tropicalis D4 (Bruss Laboratories, Gdynia, Poland)



M4_24 72h II

Candida dubliniensis D5
(Bruss Laboratories, Gdynia, Poland)

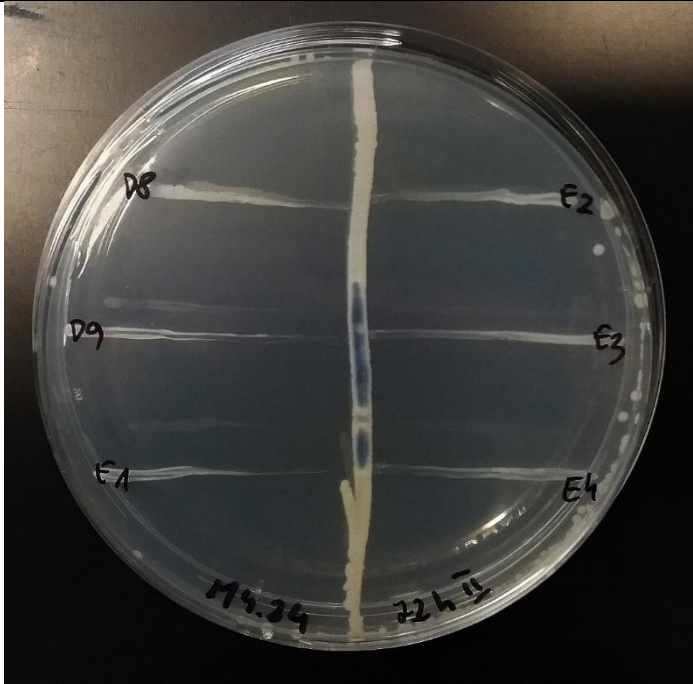
Candida albicans D6 (Bruss Laboratories, Gdynia, Poland)

Candida albicans D7
(Medical University of Gdańsk)

Candida albicans D8
(Medical University of Gdańsk)

Candida albicans D9
(University Clinical Centre in Gdańsk)

Candida albicans E1
(University Clinical Centre in Gdańsk)



M4_24 72h II

Candida guilliermondii E2
(University Clinical Centre in Gdańsk)

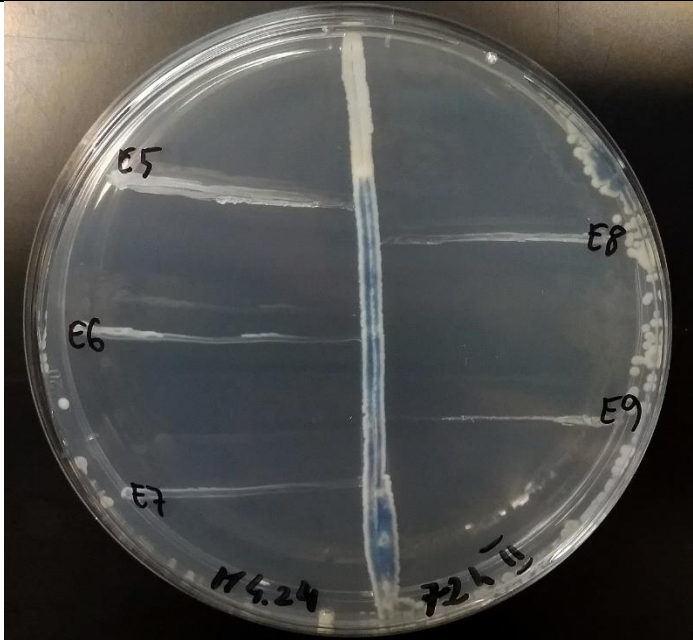
Candida guilliermondii E3
(University Clinical Centre in Gdańsk)

Candida albicans E4
(University Clinical Centre in Gdańsk)

Candida albicans E5
(University Clinical Centre in Gdańsk)

Candida glabrata E6
(University Clinical Centre in Gdańsk)

Candida glabrata E7
(University Clinical Centre in Gdańsk)



M4_24 72h II

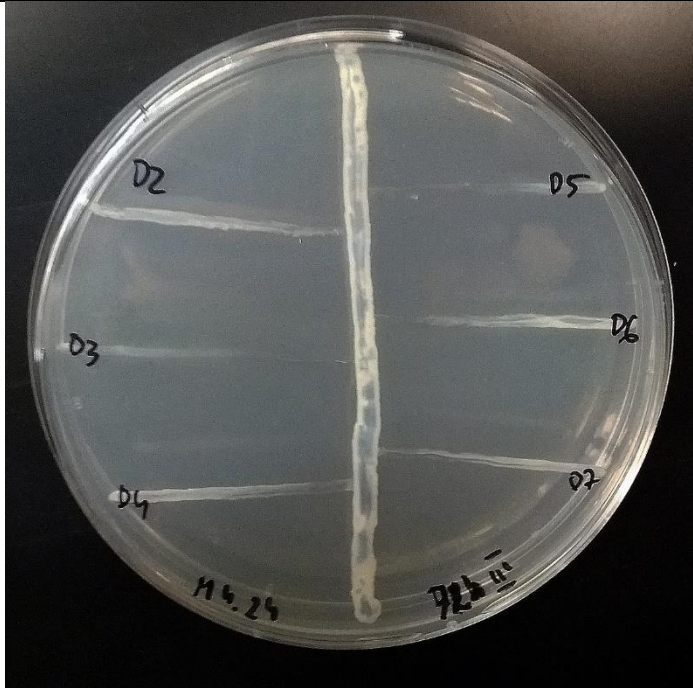
Candida sp. E8 (University Clinical Centre in Gdańsk)

Candida sp. E9 (University Clinical Centre in Gdańsk)

Candida parapsilosis D2
(Bruss Laboratories, Gdynia,
Poland)

Candida glabrata D3 (Bruss
Laboratories, Gdynia,
Poland)

Candida tropicalis D4 (Bruss
Laboratories, Gdynia,
Poland)



M4_24 72h III

Candida dubliniensis D5
(Bruss Laboratories, Gdynia,
Poland)

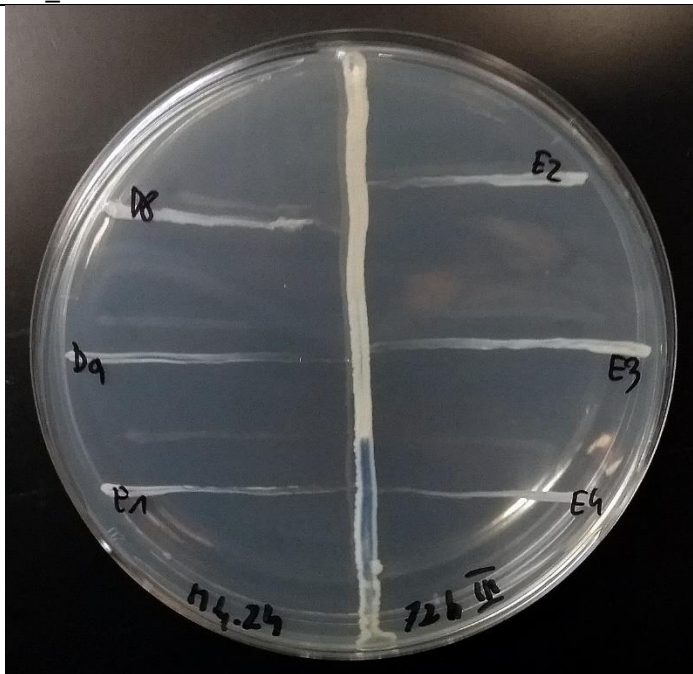
Candida albicans D6 (Bruss
Laboratories, Gdynia,
Poland)

Candida albicans D7
(Medical University of
Gdańsk)

Candida albicans D8
(Medical University of
Gdańsk)

Candida albicans D9
(University Clinical Centre in
Gdańsk)

Candida albicans E1
(University Clinical Centre in
Gdańsk)



M4_24 72h III

Candida guilliermondii E2
(University Clinical Centre in
Gdańsk)

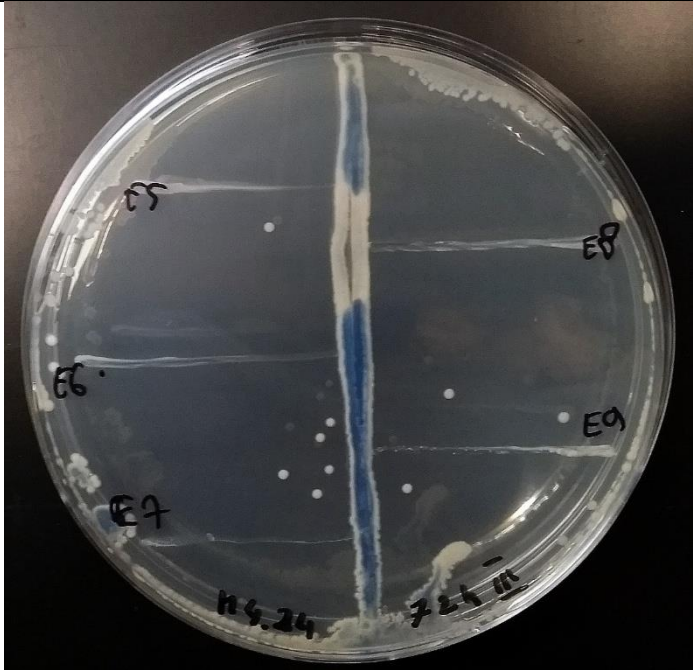
Candida guilliermondii E3
(University Clinical Centre in
Gdańsk)

Candida albicans E4
(University Clinical Centre in
Gdańsk)

Candida albicans E5
(University Clinical Centre in Gdańsk)

Candida glabrata E6
(University Clinical Centre in Gdańsk)

Candida glabrata E7
(University Clinical Centre in Gdańsk)



M4_24 72h III

Candida sp. E8 (University Clinical Centre in Gdańsk)

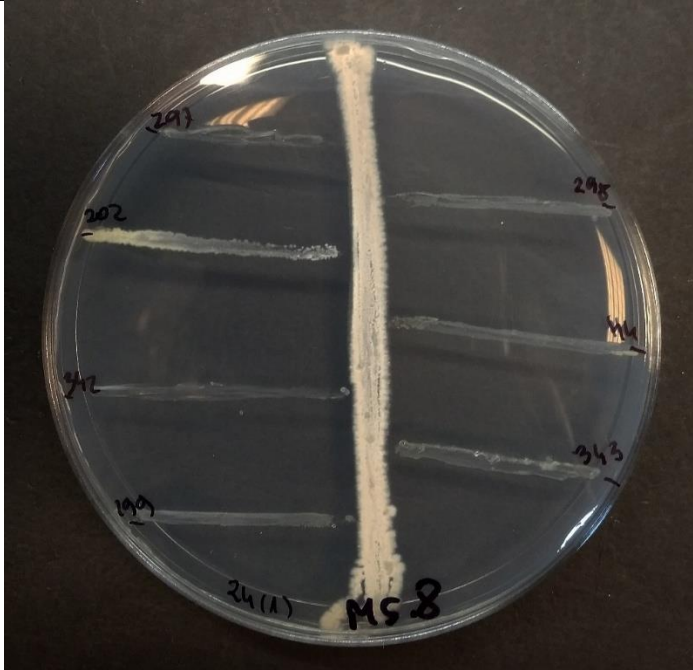
Candida sp. E9 (University Clinical Centre in Gdańsk)

Staphylococcus aureus MRSA 297 (Medical University of Gdańsk)

Staphylococcus aureus MRSA 202 (Medical University of Gdańsk)

Staphylococcus aureus MRSA 342 (Medical University of Gdańsk)

Staphylococcus aureus MRSA 199 (Medical University of Gdańsk)



M5_8 24h I

Staphylococcus aureus MRSA 298 (Medical University of Gdańsk)

Staphylococcus aureus MRSA 44 (Medical University of Gdańsk)

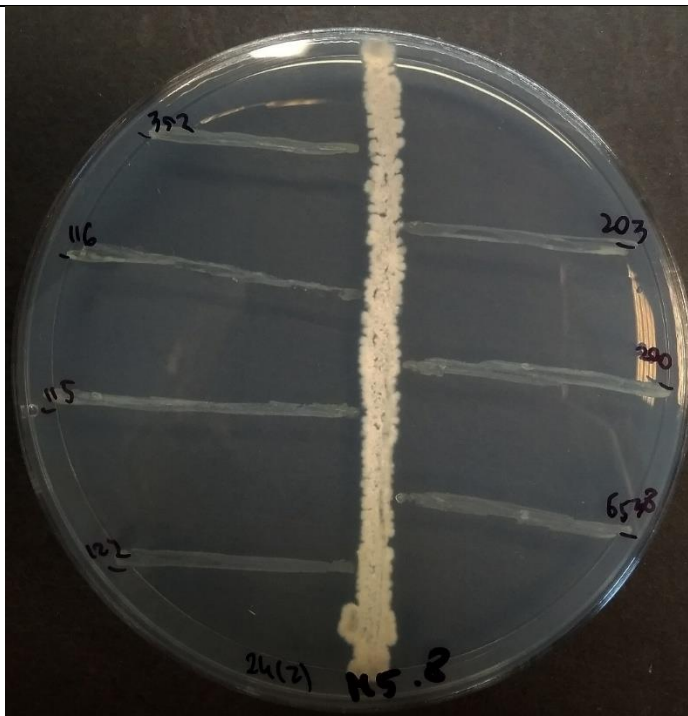
Staphylococcus aureus MRSA 343 (Medical University of Gdańsk)

Staphylococcus aureus
MRSA 352 (Medical
University of Gdańsk)

Staphylococcus aureus
MRSA 116 (Medical
University of Gdańsk)

Staphylococcus aureus
MRSA 115 (Medical
University of Gdańsk)

Staphylococcus aureus
MRSA 122 (Medical
University of Gdańsk)



M5_8 24h II

Staphylococcus aureus
MRSA 203 (Medical
University of Gdańsk)

Staphylococcus aureus
MRSA 200 (Medical
University of Gdańsk)

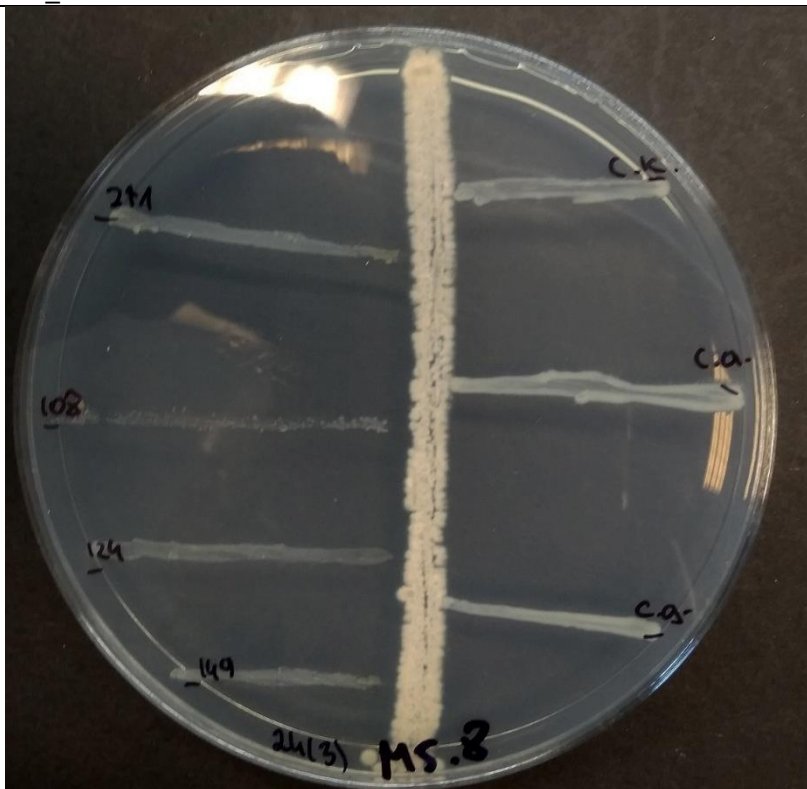
Staphylococcus aureus
MRSA ATCC 6538 (Medical
University of Gdańsk)

Staphylococcus aureus
MRSA 271 (Medical
University of Gdańsk)

Staphylococcus aureus
MRSA 108 (Medical
University of Gdańsk)

Staphylococcus aureus
MRSA 124 (Medical
University of Gdańsk)

Staphylococcus aureus
MRSA 149 (Medical
University of Gdańsk)



M5_8 24h III

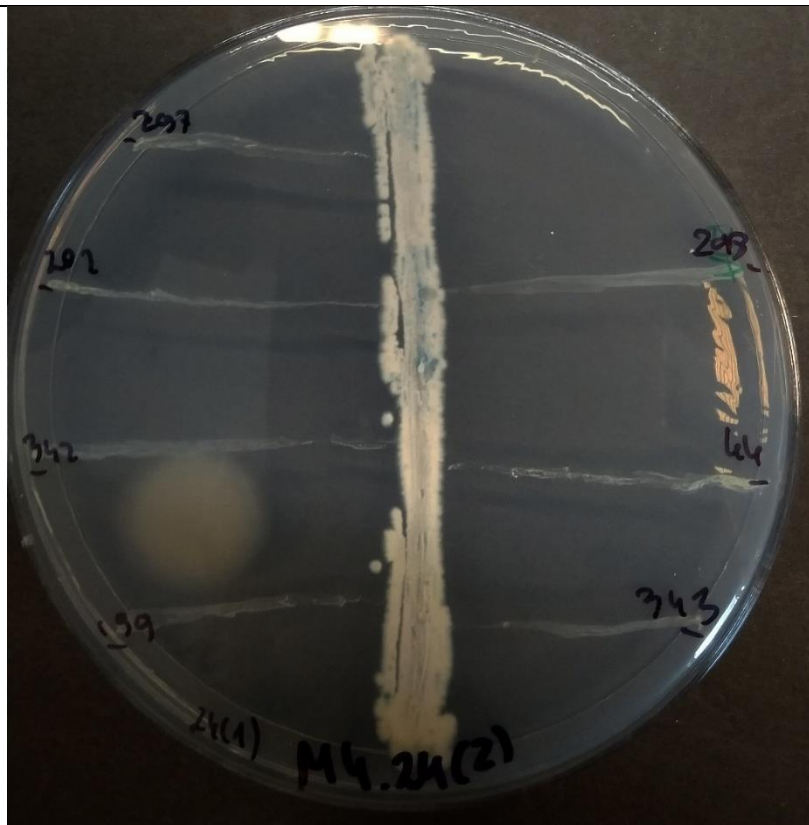
-
-
-
(to są candida nieopisane
w publikacji)

Staphylococcus aureus
MRSA 297 (Medical
University of Gdańsk)

Staphylococcus aureus
MRSA 202 (Medical
University of Gdańsk)

Staphylococcus aureus
MRSA 342 (Medical
University of Gdańsk)

Staphylococcus aureus
MRSA 199 (Medical
University of Gdańsk)



M4_24 24h I

Staphylococcus aureus
MRSA 298 (Medical
University of Gdańsk)

Staphylococcus aureus
MRSA 44 (Medical
University of Gdańsk)

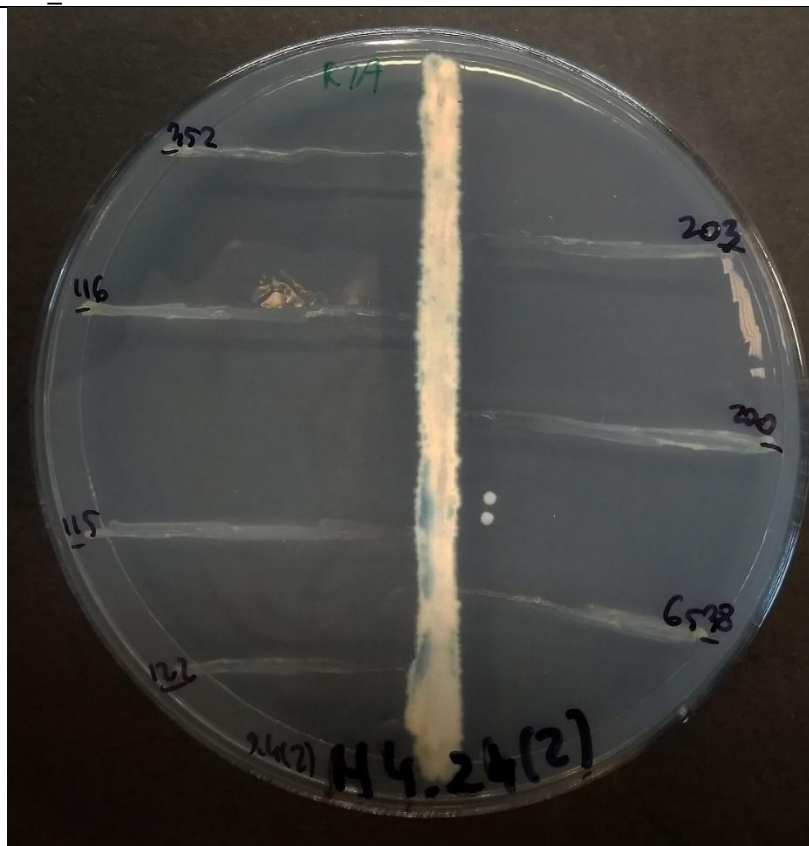
Staphylococcus aureus
MRSA 343 (Medical
University of Gdańsk)

Staphylococcus aureus
MRSA 352 (Medical
University of Gdańsk)

Staphylococcus aureus
MRSA 116 (Medical
University of Gdańsk)

Staphylococcus aureus
MRSA 115 (Medical
University of Gdańsk)

Staphylococcus aureus
MRSA 122 (Medical
University of Gdańsk)



M4_24 24h II

Staphylococcus aureus
MRSA 203 (Medical
University of Gdańsk)

Staphylococcus aureus
MRSA 200 (Medical
University of Gdańsk)

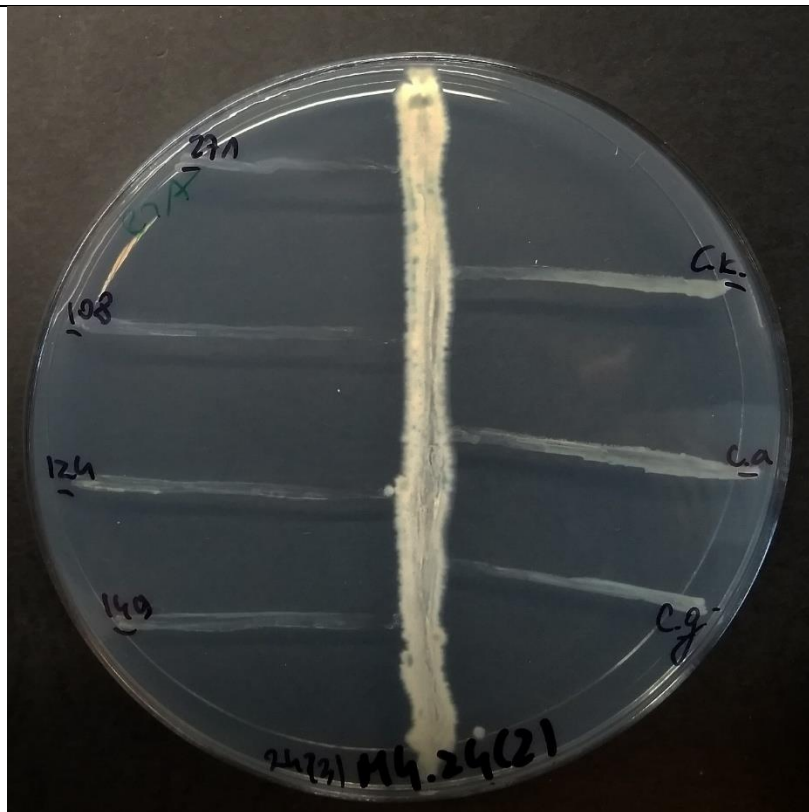
Staphylococcus aureus
MRSA ATCC 6538 (Medical
University of Gdańsk)

Staphylococcus aureus
MRSA 271 (Medical
University of Gdańsk)

Staphylococcus aureus
MRSA 108 (Medical
University of Gdańsk)

Staphylococcus aureus
MRSA 124 (Medical
University of Gdańsk)

Staphylococcus aureus
MRSA 149 (Medical
University of Gdańsk)



M4_24 24h III

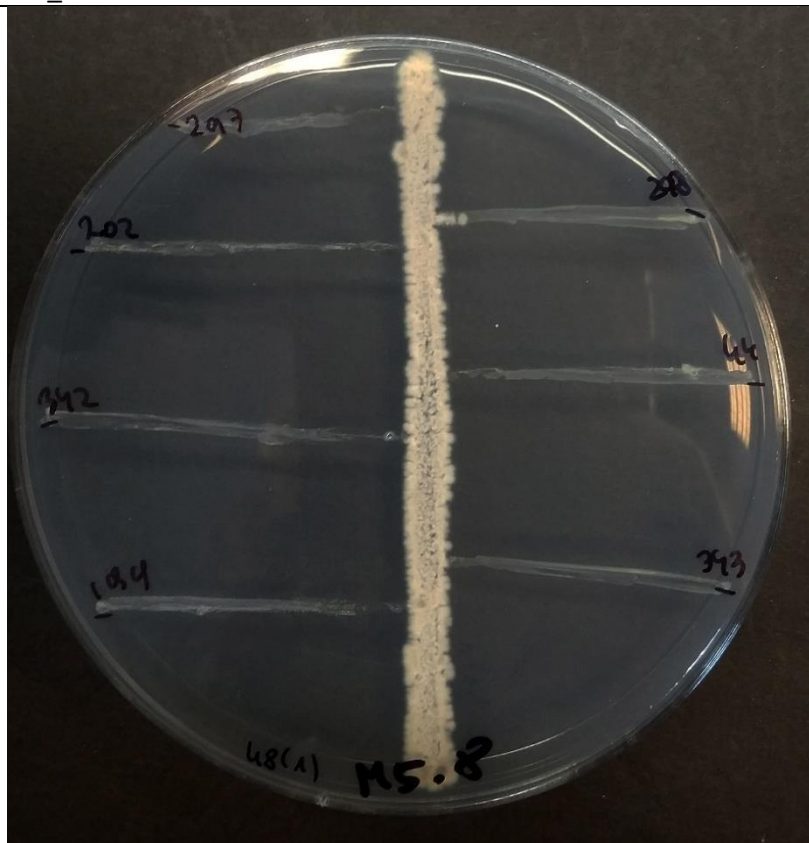
-
-
-
(to są candida nieopisane
w publikacji)

Staphylococcus aureus
MRSA 297 (Medical
University of Gdańsk)

Staphylococcus aureus
MRSA 202 (Medical
University of Gdańsk)

Staphylococcus aureus
MRSA 342 (Medical
University of Gdańsk)

Staphylococcus aureus
MRSA 199 (Medical
University of Gdańsk)



M5_8 48h I

Staphylococcus aureus
MRSA 298 (Medical
University of Gdańsk)

Staphylococcus aureus
MRSA 44 (Medical
University of Gdańsk)

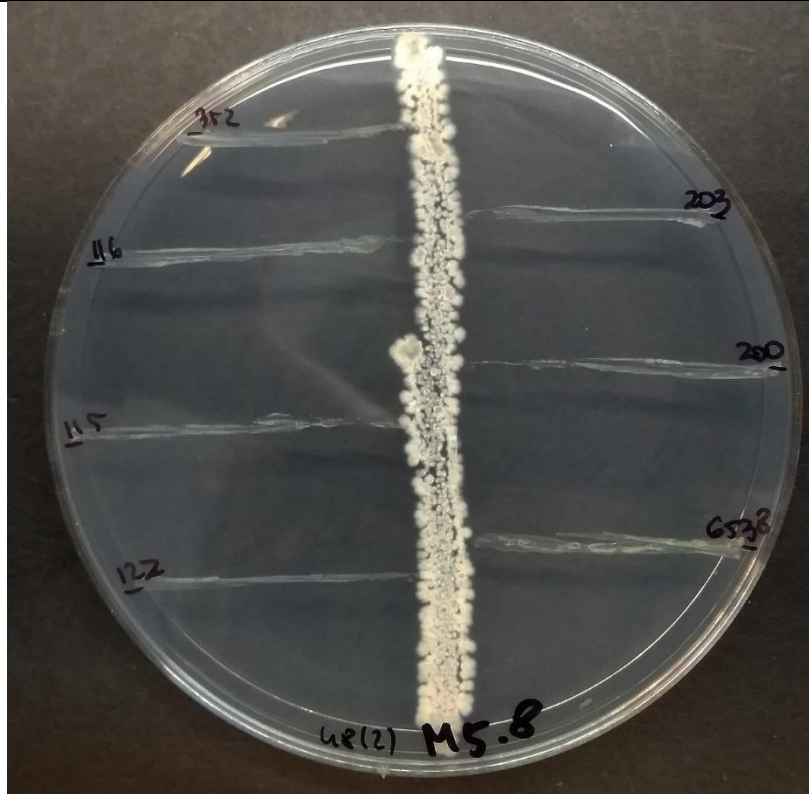
Staphylococcus aureus
MRSA 343 (Medical
University of Gdańsk)

Staphylococcus aureus
MRSA 352 (Medical
University of Gdańsk)

Staphylococcus aureus
MRSA 116 (Medical
University of Gdańsk)

Staphylococcus aureus
MRSA 115 (Medical
University of Gdańsk)

Staphylococcus aureus
MRSA 122 (Medical
University of Gdańsk)



M5_8 48h II

Staphylococcus aureus
MRSA 203 (Medical
University of Gdańsk)

Staphylococcus aureus
MRSA 200 (Medical
University of Gdańsk)

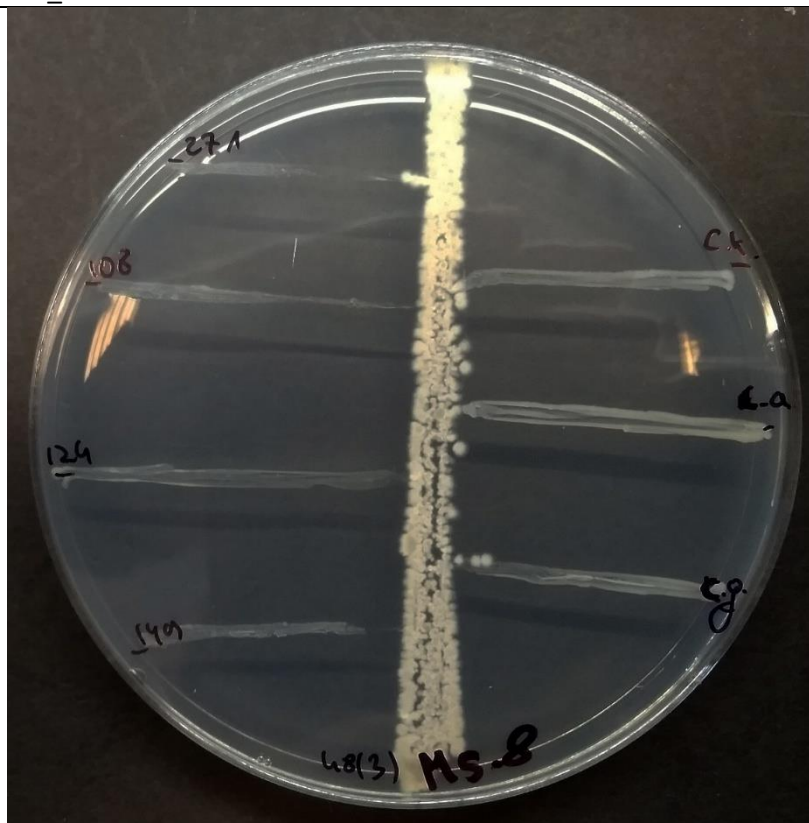
Staphylococcus aureus
MRSA ATCC 6538 (Medical
University of Gdańsk)

Staphylococcus aureus
MRSA 271 (Medical
University of Gdańsk)

Staphylococcus aureus
MRSA 108 (Medical
University of Gdańsk)

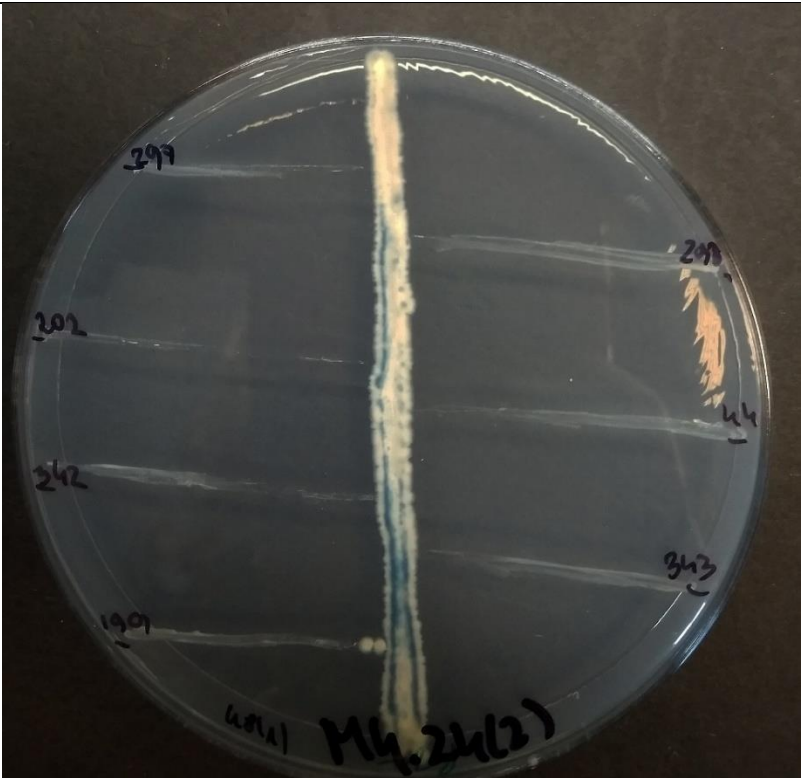
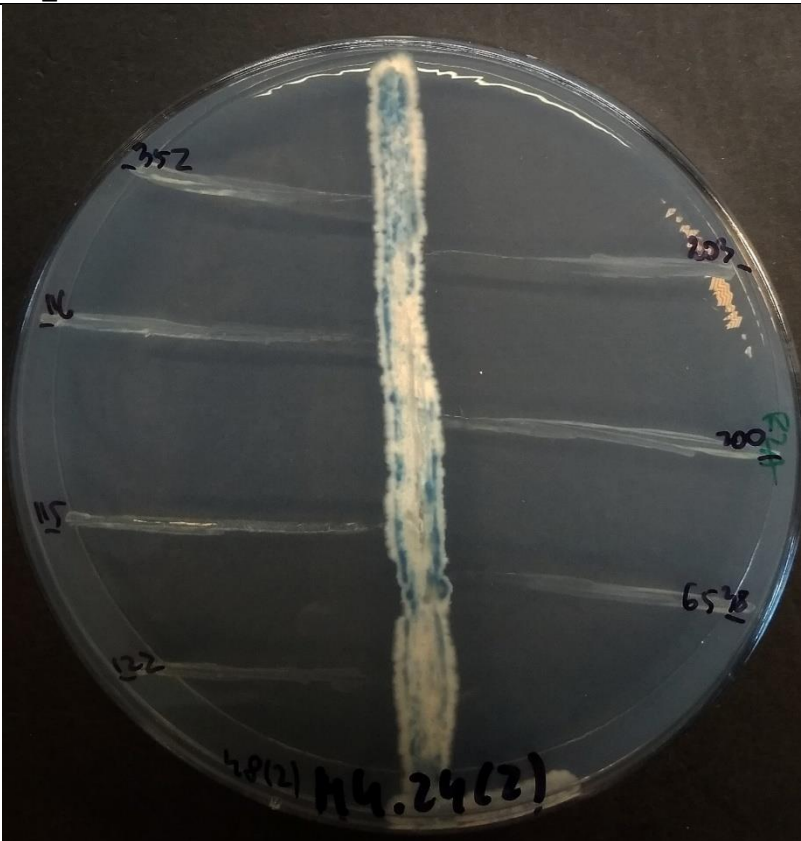
Staphylococcus aureus
MRSA 124 (Medical
University of Gdańsk)

Staphylococcus aureus
MRSA 149 (Medical
University of Gdańsk)



M5_8 48h III

-
-
-
(to są candida nieopisane
w publikacji)

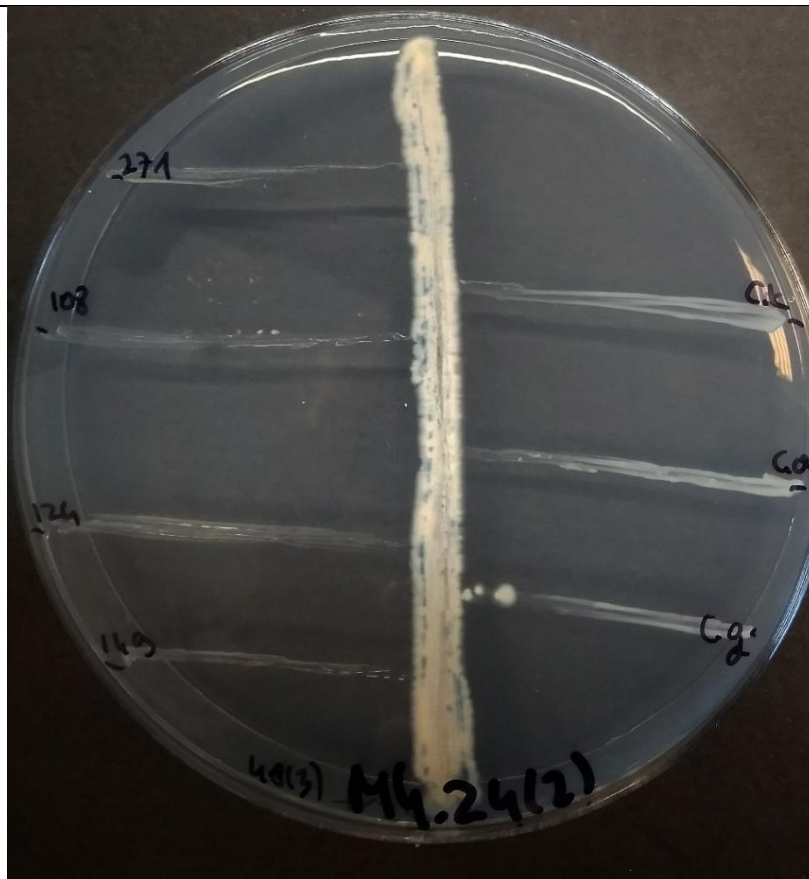
<p><i>Staphylococcus aureus</i> MRSA 297 (Medical University of Gdańsk)</p> <p><i>Staphylococcus aureus</i> MRSA 202 (Medical University of Gdańsk)</p> <p><i>Staphylococcus aureus</i> MRSA 342 (Medical University of Gdańsk)</p> <p><i>Staphylococcus aureus</i> MRSA 199 (Medical University of Gdańsk)</p>	 <p>M4_24 48h I</p>	<p><i>Staphylococcus aureus</i> MRSA 298 (Medical University of Gdańsk)</p> <p><i>Staphylococcus aureus</i> MRSA 44 (Medical University of Gdańsk)</p> <p><i>Staphylococcus aureus</i> MRSA 343 (Medical University of Gdańsk)</p>
<p><i>Staphylococcus aureus</i> MRSA 352 (Medical University of Gdańsk)</p> <p><i>Staphylococcus aureus</i> MRSA 116 (Medical University of Gdańsk)</p> <p><i>Staphylococcus aureus</i> MRSA 115 (Medical University of Gdańsk)</p> <p><i>Staphylococcus aureus</i> MRSA 122 (Medical University of Gdańsk)</p>	 <p>M4_24 48h II</p>	<p><i>Staphylococcus aureus</i> MRSA 203 (Medical University of Gdańsk)</p> <p><i>Staphylococcus aureus</i> MRSA 200 (Medical University of Gdańsk)</p> <p><i>Staphylococcus aureus</i> MRSA ATCC 6538 (Medical University of Gdańsk)</p>

Staphylococcus aureus
MRSA 271 (Medical
University of Gdańsk)

Staphylococcus aureus
MRSA 108 (Medical
University of Gdańsk)

Staphylococcus aureus
MRSA 124 (Medical
University of Gdańsk)

Staphylococcus aureus
MRSA 149 (Medical
University of Gdańsk)



M4_24 48h III

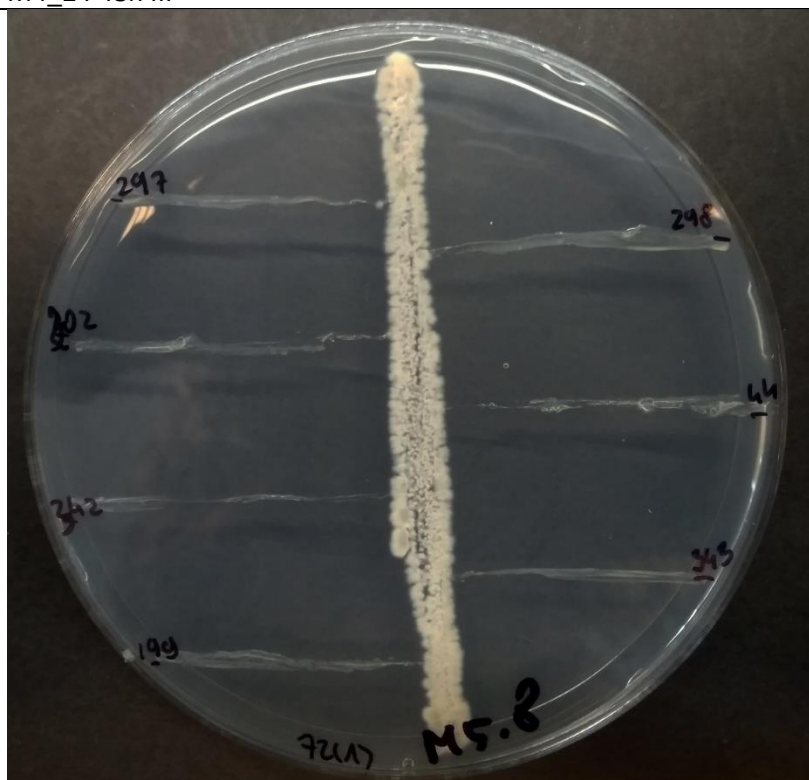
-
-
-
(to są candida nieopisane
w publikacji)

Staphylococcus aureus
MRSA 297 (Medical
University of Gdańsk)

Staphylococcus aureus
MRSA 202 (Medical
University of Gdańsk)

Staphylococcus aureus
MRSA 342 (Medical
University of Gdańsk)

Staphylococcus aureus
MRSA 199 (Medical
University of Gdańsk)



M5_8 72h I

Staphylococcus aureus
MRSA 298 (Medical
University of Gdańsk)

Staphylococcus aureus
MRSA 44 (Medical
University of Gdańsk)

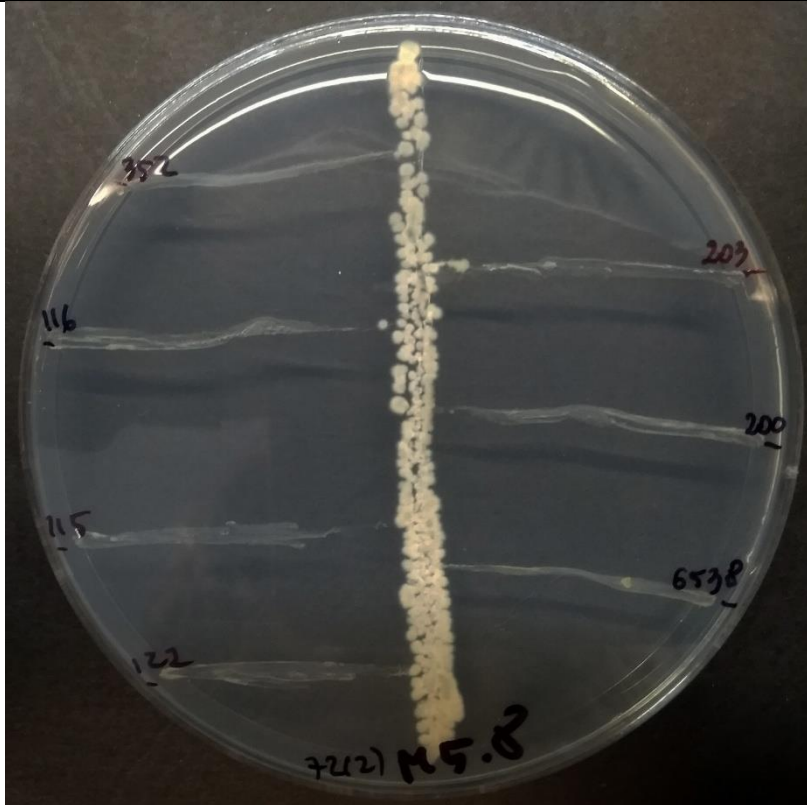
Staphylococcus aureus
MRSA 343 (Medical
University of Gdańsk)

Staphylococcus aureus
MRSA 352 (Medical
University of Gdańsk)

Staphylococcus aureus
MRSA 116 (Medical
University of Gdańsk)

Staphylococcus aureus
MRSA 115 (Medical
University of Gdańsk)

Staphylococcus aureus
MRSA 122 (Medical
University of Gdańsk)



M5_8 72h II

Staphylococcus aureus
MRSA 203 (Medical
University of Gdańsk)

Staphylococcus aureus
MRSA 200 (Medical
University of Gdańsk)

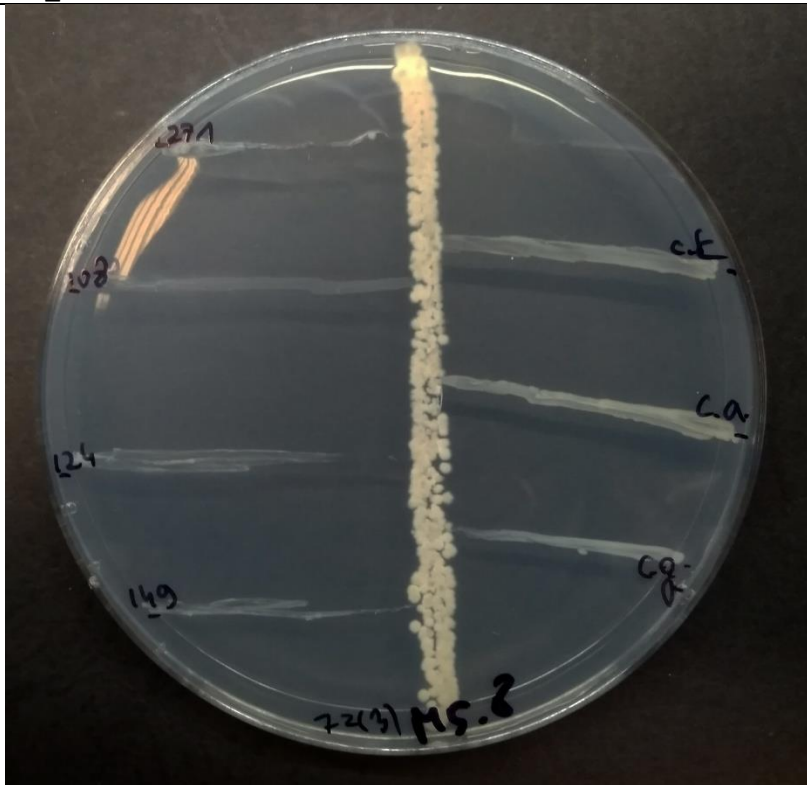
Staphylococcus aureus
MRSA ATCC 6538 (Medical
University of Gdańsk)

Staphylococcus aureus
MRSA 271 (Medical
University of Gdańsk)

Staphylococcus aureus
MRSA 108 (Medical
University of Gdańsk)

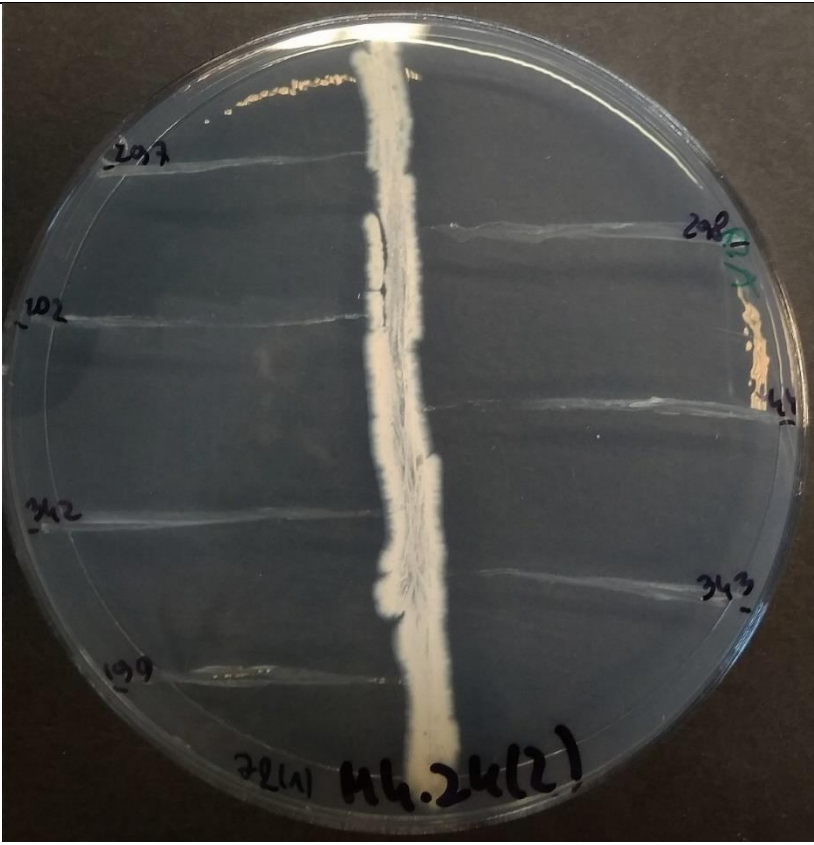
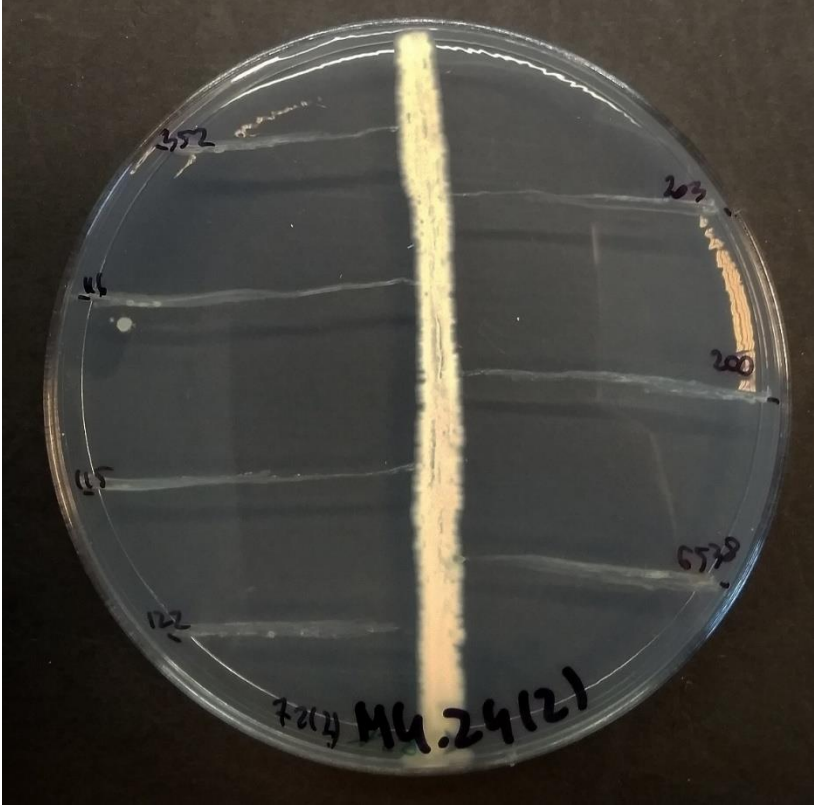
Staphylococcus aureus
MRSA 124 (Medical
University of Gdańsk)

Staphylococcus aureus
MRSA 149 (Medical
University of Gdańsk)



M5_8 72h III

-
-
-
(to są candida nieopisane
w publikacji)

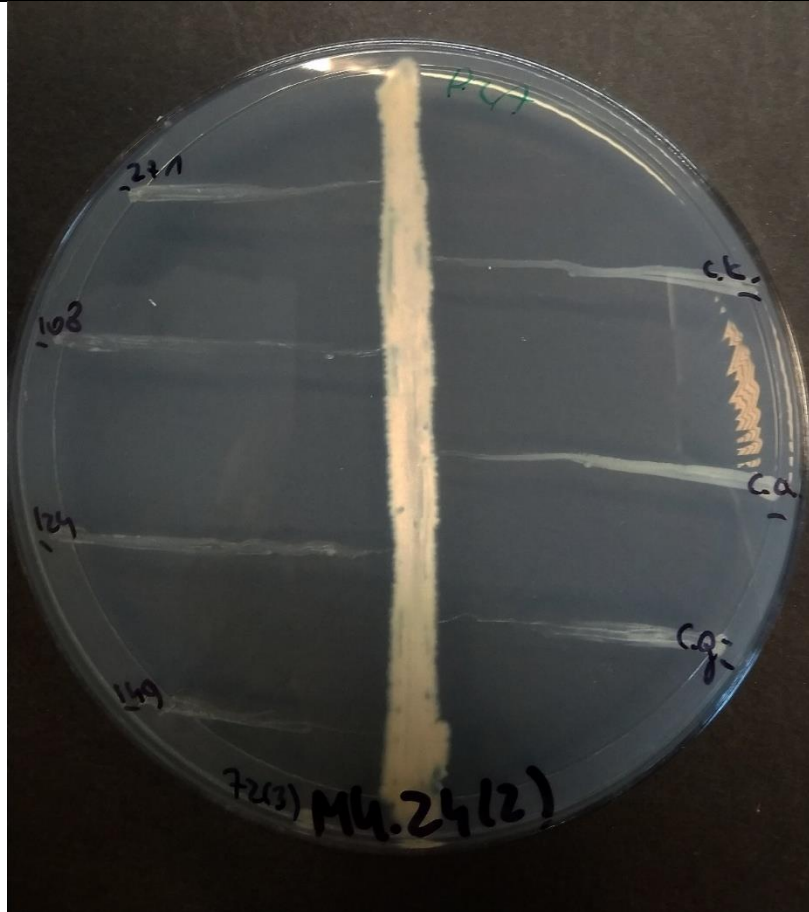
<p><i>Staphylococcus aureus</i> MRSA 297 (Medical University of Gdańsk)</p> <p><i>Staphylococcus aureus</i> MRSA 202 (Medical University of Gdańsk)</p> <p><i>Staphylococcus aureus</i> MRSA 342 (Medical University of Gdańsk)</p> <p><i>Staphylococcus aureus</i> MRSA 199 (Medical University of Gdańsk)</p>	 <p>M4_24 72h I</p>	<p><i>Staphylococcus aureus</i> MRSA 298 (Medical University of Gdańsk)</p> <p><i>Staphylococcus aureus</i> MRSA 44 (Medical University of Gdańsk)</p> <p><i>Staphylococcus aureus</i> MRSA 343 (Medical University of Gdańsk)</p>
<p><i>Staphylococcus aureus</i> MRSA 352 (Medical University of Gdańsk)</p> <p><i>Staphylococcus aureus</i> MRSA 116 (Medical University of Gdańsk)</p> <p><i>Staphylococcus aureus</i> MRSA 115 (Medical University of Gdańsk)</p> <p><i>Staphylococcus aureus</i> MRSA 122 (Medical University of Gdańsk)</p>	 <p>M4_24 72h II</p>	<p><i>Staphylococcus aureus</i> MRSA 203 (Medical University of Gdańsk)</p> <p><i>Staphylococcus aureus</i> MRSA 200 (Medical University of Gdańsk)</p> <p><i>Staphylococcus aureus</i> MRSA ATCC 6538 (Medical University of Gdańsk)</p>

Staphylococcus aureus
MRSA 271 (Medical
University of Gdańsk)

Staphylococcus aureus
MRSA 108 (Medical
University of Gdańsk)

Staphylococcus aureus
MRSA 124 (Medical
University of Gdańsk)

Staphylococcus aureus
MRSA 149 (Medical
University of Gdańsk)



M4_24 72h III

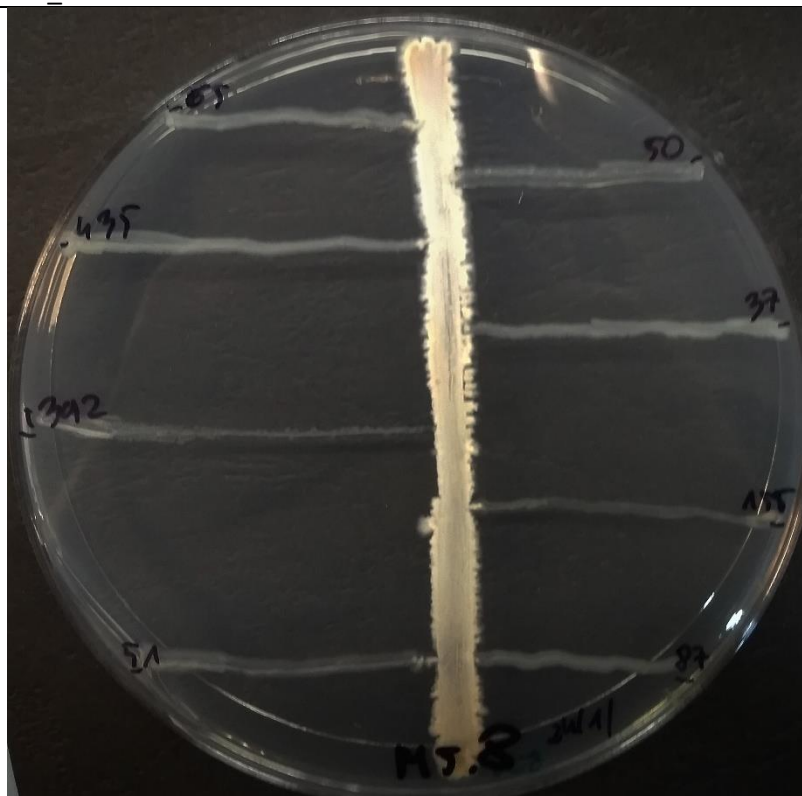
-
-
-
(to są candida nieopisane
w publikacji)

Salmonella enterica Dubin
65 (National Salmonella
Center, Gdańsk, Poland)

Salmonella enterica
Saindpaul 435 (National
Salmonella Center, Gdańsk,
Poland)

Salmonella enterica
Enteritidis 1392 (National
Salmonella Center, Gdańsk,
Poland)

Salmonella enterica
Newport 51 (National
Salmonella Center, Gdańsk,
Poland)



M5_8 24h I

Salmonella enterica
Newport 50 (National
Salmonella Center, Gdańsk,
Poland)

Salmonella enterica
Cholerasuis 37 (National
Salmonella Center, Gdańsk,
Poland)

Salmonella enterica Infantis
155 (National Salmonella
Center, Gdańsk, Poland)

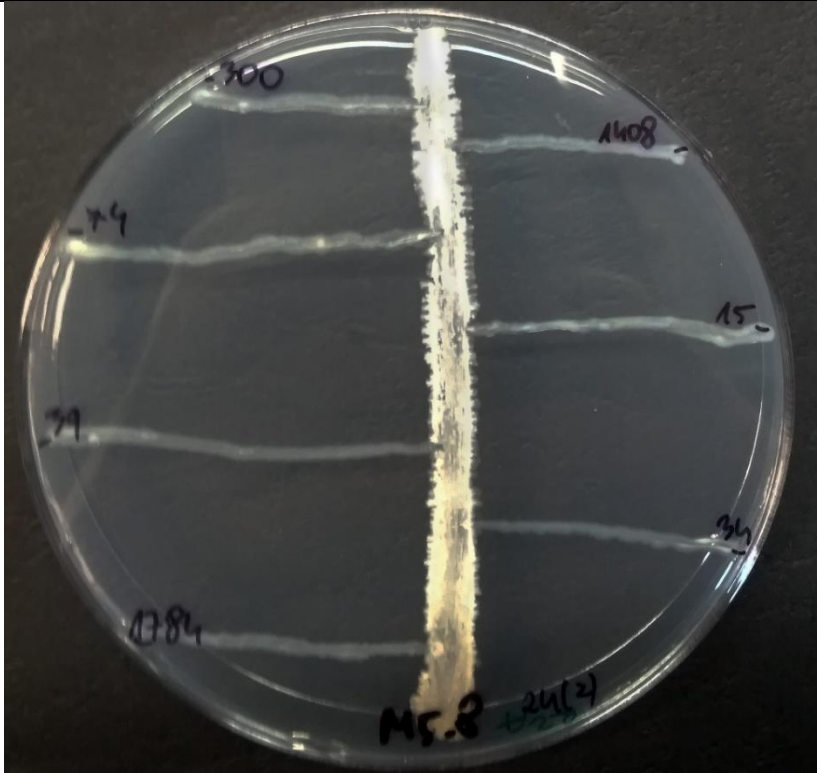
Salmonella enterica
Seftenberg 87 (National
Salmonella Center, Gdańsk,
Poland)

Salmonella enterica
Bovismorbificans 300
(National Salmonella
Center, Gdańsk, Poland)

Salmonella enterica
Gallinarum 74 (National
Salmonella Center, Gdańsk,
Poland)

Salmonella enterica
Cholerasuis 39 (National
Salmonella Center, Gdańsk,
Poland)

Salmonella enterica Hadar
1784 (National Salmonella
Center, Gdańsk, Poland)



M5_8 24h II

Salmonella enterica Agona
1408 (National Salmonella
Center, Gdańsk, Poland)

-

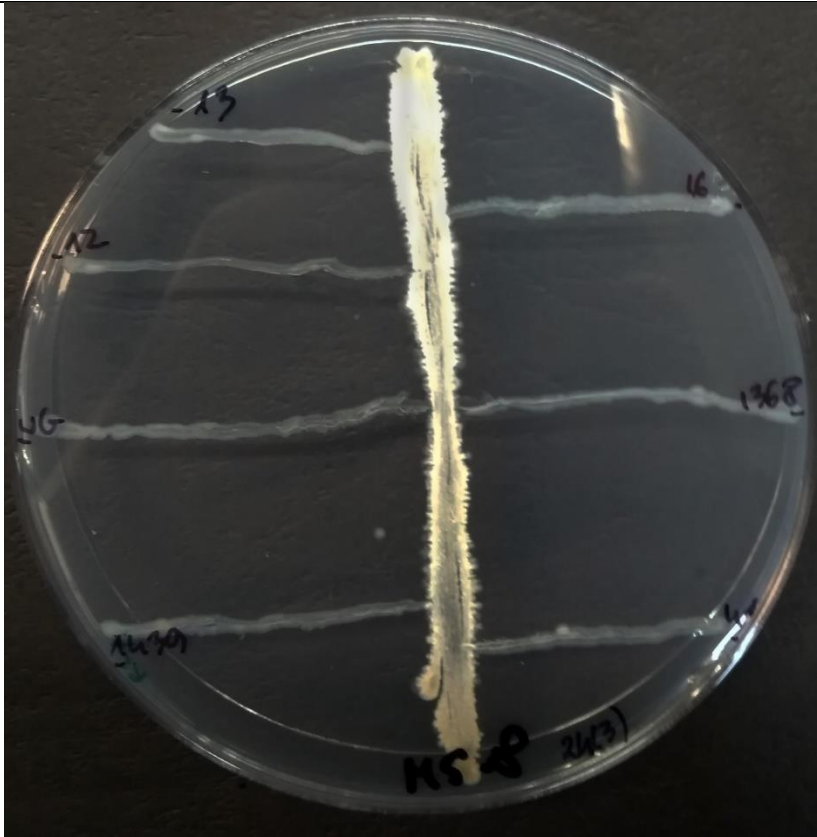
-

Salmonella enterica
Typhimurium 13 (National
Salmonella Center, Gdańsk,
Poland)

Salmonella enterica
Typhimurium 12 (National
Salmonella Center, Gdańsk,
Poland)

-

Salmonella enterica
Cholerasuis 1439 (National
Salmonella Center, Gdańsk,
Poland)



M5_8 24h III

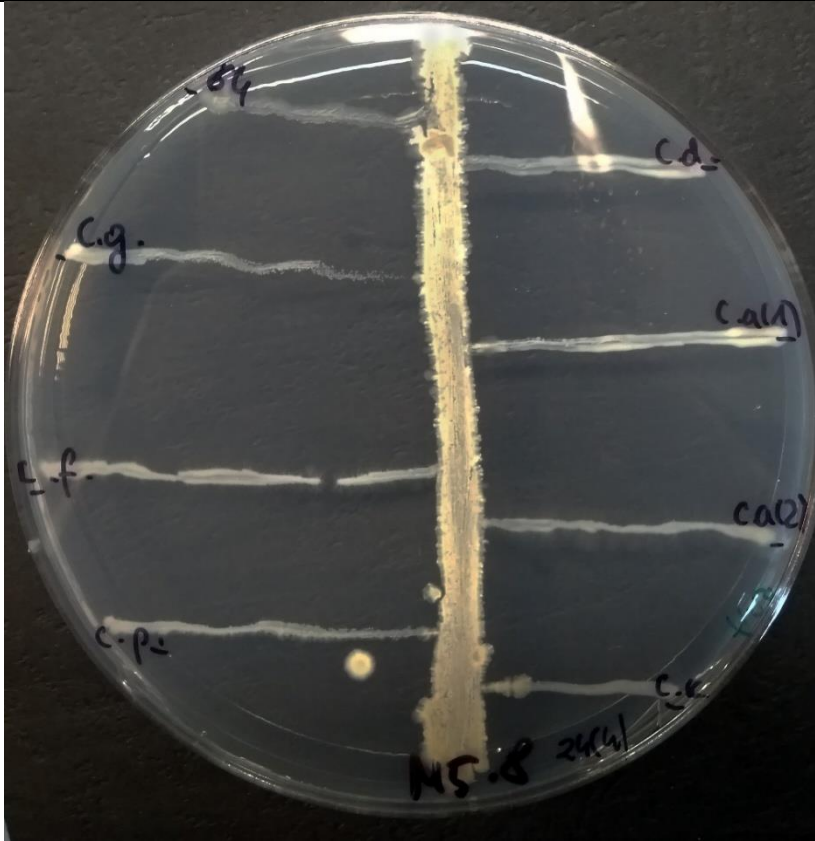
Salmonella enterica
Heidelberg 16 (National
Salmonella Center, Gdańsk,
Poland)

Salmonella enterica
Kentucky 1368 (National
Salmonella Center, Gdańsk,
Poland)

Salmonella enterica
Virchow 41 (National
Salmonella Center, Gdańsk,
Poland)

Salmonella enterica
Enteritidis 64 (National
Salmonella Center, Gdańsk,
Poland)

-
-
-



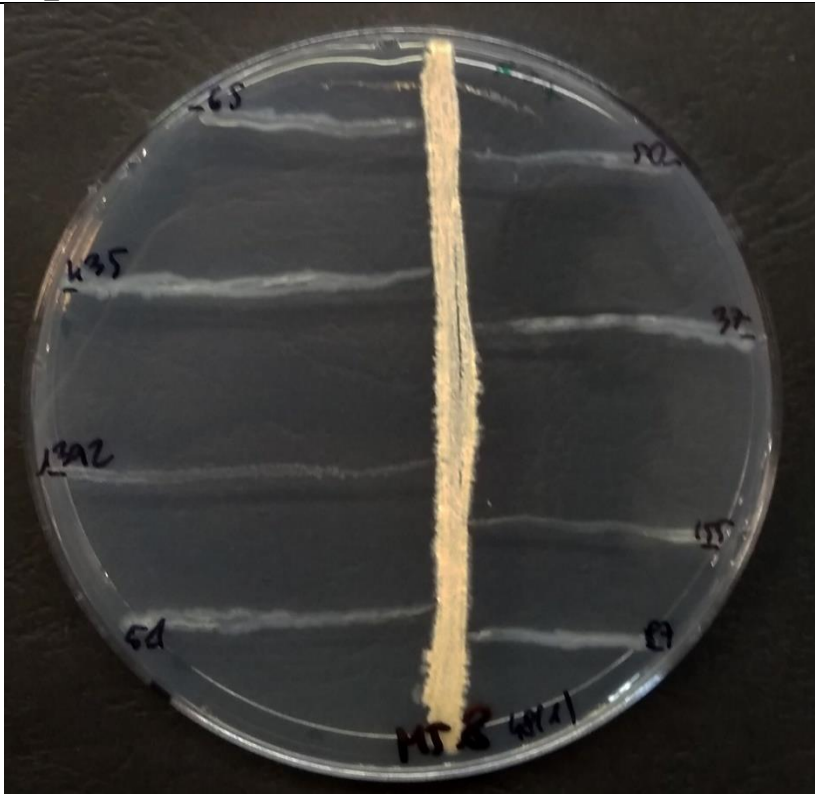
M5_8 24h IV

Salmonella enterica Dubin
65 (National Salmonella
Center, Gdańsk, Poland)

Salmonella enterica
Saindpaul 435 (National
Salmonella Center, Gdańsk,
Poland)

Salmonella enterica
Enteritidis 1392 (National
Salmonella Center, Gdańsk,
Poland)

Salmonella enterica
Newport 51 (National
Salmonella Center, Gdańsk,
Poland)



M5_8 48h I

Salmonella enterica
Newport 50 (National
Salmonella Center, Gdańsk,
Poland)

Salmonella enterica
Cholerasuis 37 (National
Salmonella Center, Gdańsk,
Poland)

Salmonella enterica Infantis
155 (National Salmonella
Center, Gdańsk, Poland)

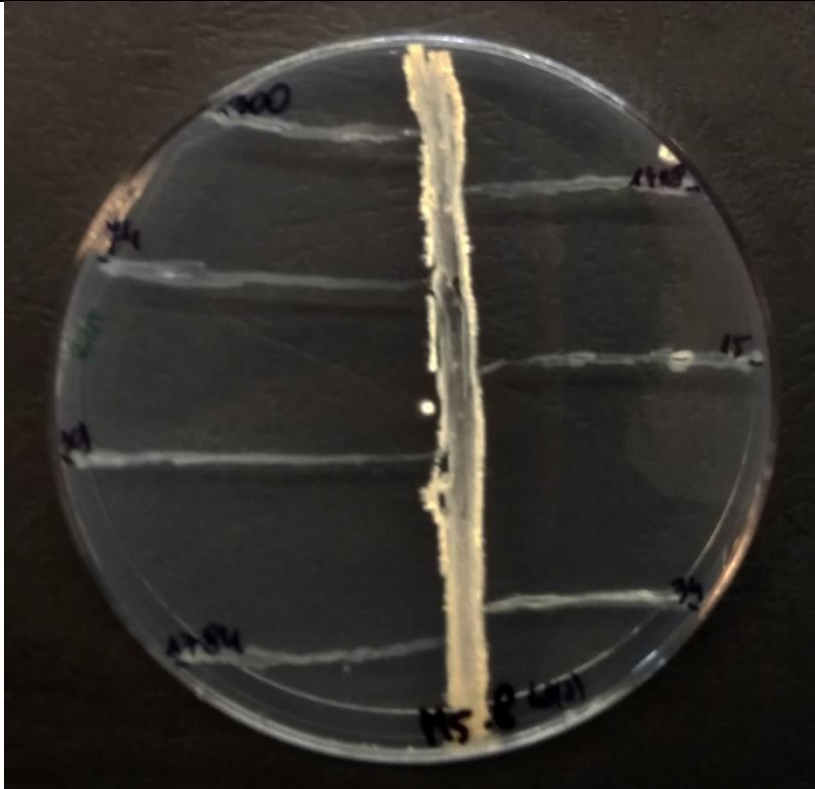
Salmonella enterica
Seftenberg 87 (National
Salmonella Center, Gdańsk,
Poland)

Salmonella enterica
Bovismorbificans 300
(National Salmonella
Center, Gdańsk, Poland)

Salmonella enterica
Gallinarum 74 (National
Salmonella Center, Gdańsk,
Poland)

Salmonella enterica
Cholerasuis 39 (National
Salmonella Center, Gdańsk,
Poland)

Salmonella enterica Hadar
1784 (National Salmonella
Center, Gdańsk, Poland)



M5_8 48h II

Salmonella enterica Agona
1408 (National Salmonella
Center, Gdańsk, Poland)

-

-

Salmonella enterica
Typhimurium 13 (National
Salmonella Center, Gdańsk,
Poland)

Salmonella enterica
Typhimurium 12 (National
Salmonella Center, Gdańsk,
Poland)

-

Salmonella enterica
Cholerasuis 1439 (National
Salmonella Center, Gdańsk,
Poland)



M5_8 48h III

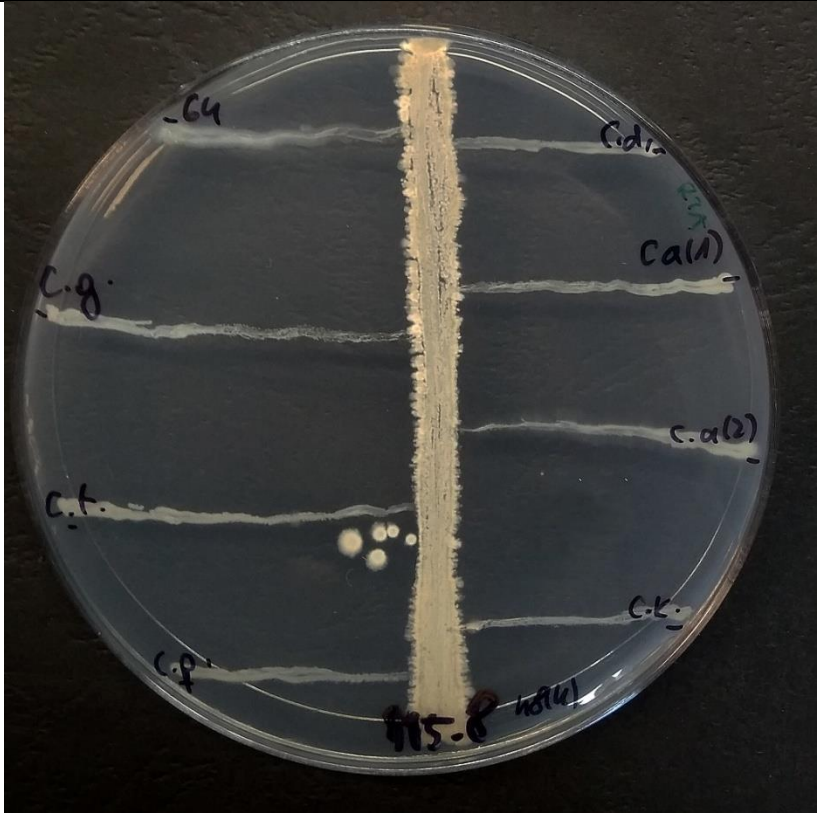
Salmonella enterica
Heidelberg 16 (National
Salmonella Center, Gdańsk,
Poland)

Salmonella enterica
Kentucky 1368 (National
Salmonella Center, Gdańsk,
Poland)

Salmonella enterica
Virchow 41 (National
Salmonella Center, Gdańsk,
Poland)

Salmonella enterica
Enteritidis 64 (National
Salmonella Center, Gdańsk,
Poland)

-
-
-



-
-
-
-

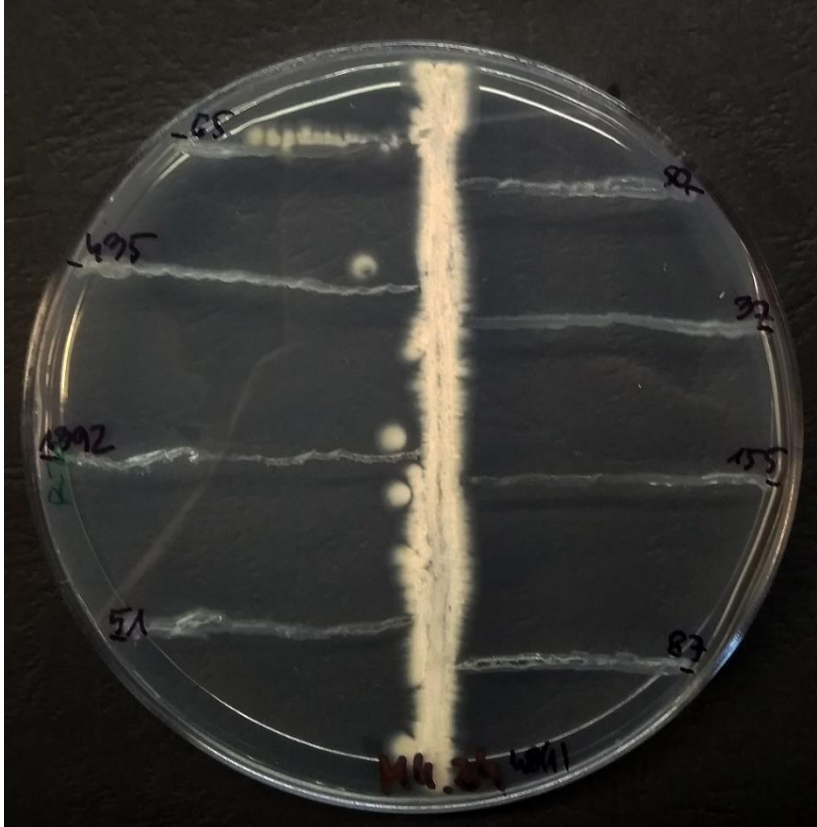
M5_8 48h IV

Salmonella enterica Dubin
65 (National Salmonella
Center, Gdańsk, Poland)

Salmonella enterica
Saindpaul 435 (National
Salmonella Center, Gdańsk,
Poland)

Salmonella enterica
Enteritidis 1392 (National
Salmonella Center, Gdańsk,
Poland)

Salmonella enterica
Newport 51 (National
Salmonella Center, Gdańsk,
Poland)



M4_24 48h I

Salmonella enterica
Newport 50 (National
Salmonella Center, Gdańsk,
Poland)

Salmonella enterica
Cholerasuis 37 (National
Salmonella Center, Gdańsk,
Poland)

Salmonella enterica Infantis
155 (National Salmonella
Center, Gdańsk, Poland)

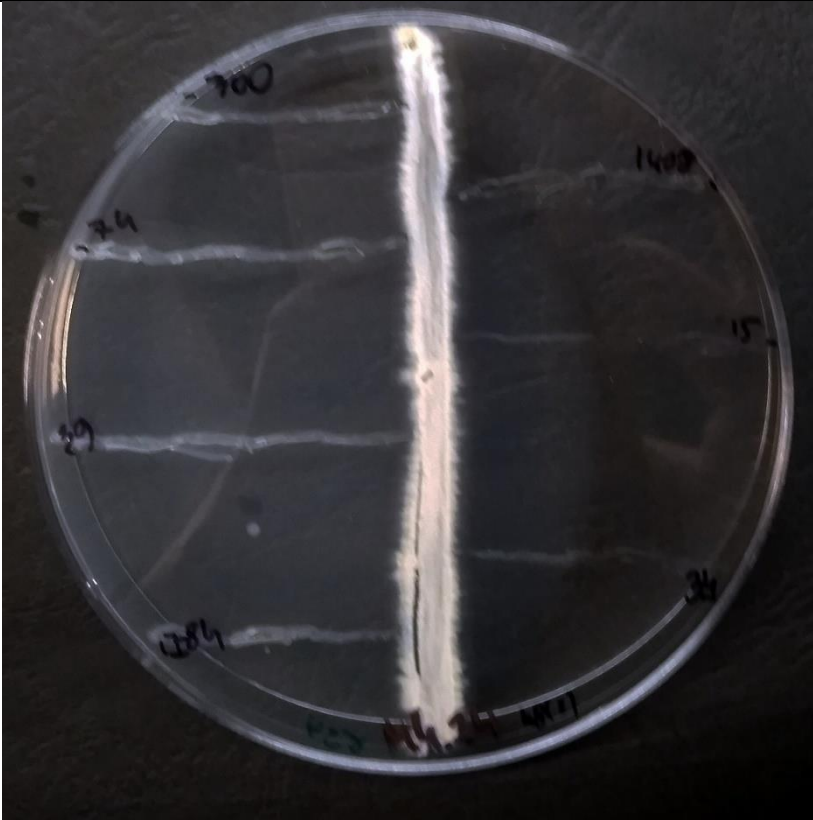
Salmonella enterica
Seftenberg 87 (National
Salmonella Center, Gdańsk,
Poland)

Salmonella enterica
Bovismorbificans 300
(National Salmonella
Center, Gdańsk, Poland)

Salmonella enterica
Gallinarum 74 (National
Salmonella Center, Gdańsk,
Poland)

Salmonella enterica
Cholerasuis 39 (National
Salmonella Center, Gdańsk,
Poland)

Salmonella enterica Hadar
1784 (National Salmonella
Center, Gdańsk, Poland)



M4_24 48h II

Salmonella enterica Agona
1408 (National Salmonella
Center, Gdańsk, Poland)

-

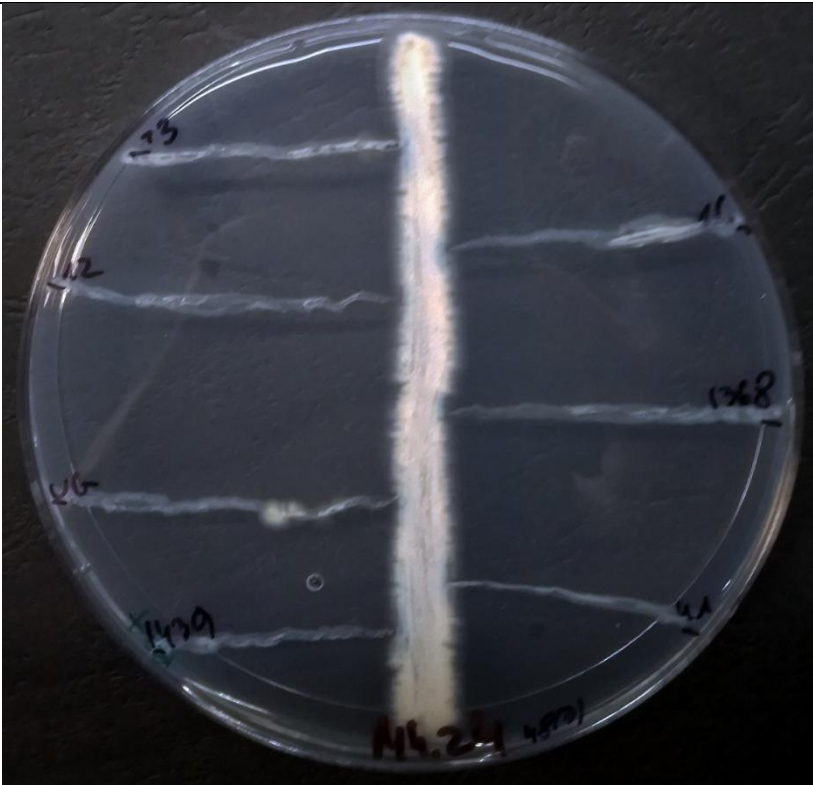
-

Salmonella enterica
Typhimurium 13 (National
Salmonella Center, Gdańsk,
Poland)

Salmonella enterica
Typhimurium 12 (National
Salmonella Center, Gdańsk,
Poland)

-

Salmonella enterica
Cholerasuis 1439 (National
Salmonella Center, Gdańsk,
Poland)



M4_24 48h III

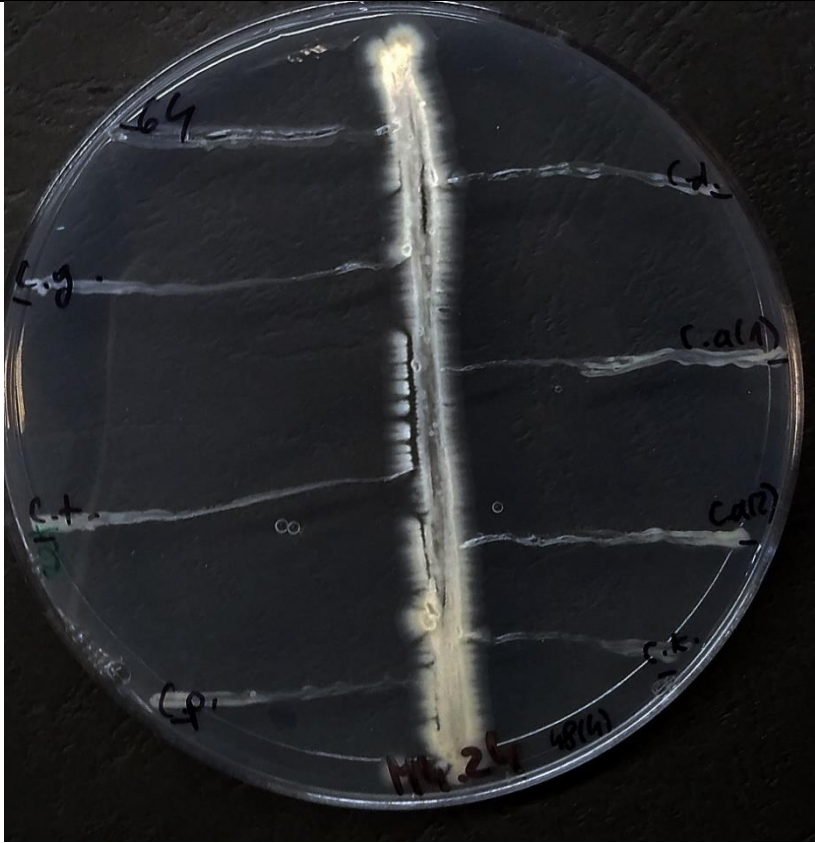
Salmonella enterica
Heidelberg 16 (National
Salmonella Center, Gdańsk,
Poland)

Salmonella enterica
Kentucky 1368 (National
Salmonella Center, Gdańsk,
Poland)

Salmonella enterica
Virchow 41 (National
Salmonella Center, Gdańsk,
Poland)

Salmonella enterica
Enteritidis 64 (National
Salmonella Center, Gdańsk,
Poland)

-
-
-



M4_24 48h IV

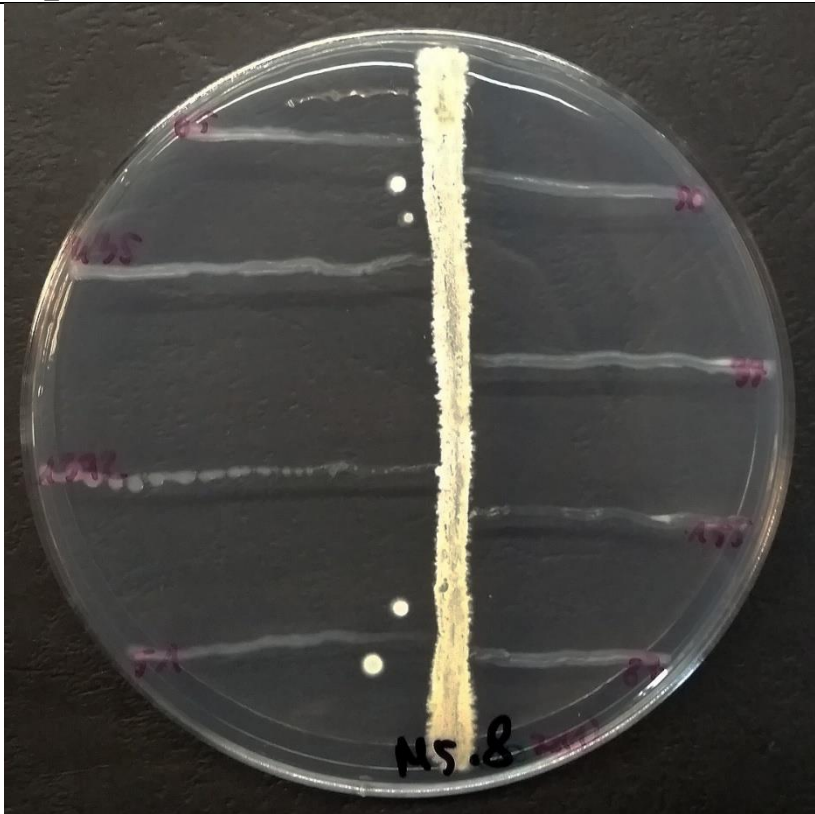
-
-
-
-

Salmonella enterica Dubin
65 (National Salmonella
Center, Gdańsk, Poland)

Salmonella enterica
Saindpaul 435 (National
Salmonella Center, Gdańsk,
Poland)

Salmonella enterica
Enteritidis 1392 (National
Salmonella Center, Gdańsk,
Poland)

Salmonella enterica
Newport 51 (National
Salmonella Center, Gdańsk,
Poland)



M5_8 72h I

Salmonella enterica
Newport 50 (National
Salmonella Center, Gdańsk,
Poland)

Salmonella enterica
Cholerasuis 37 (National
Salmonella Center, Gdańsk,
Poland)

Salmonella enterica Infantis
155 (National Salmonella
Center, Gdańsk, Poland)

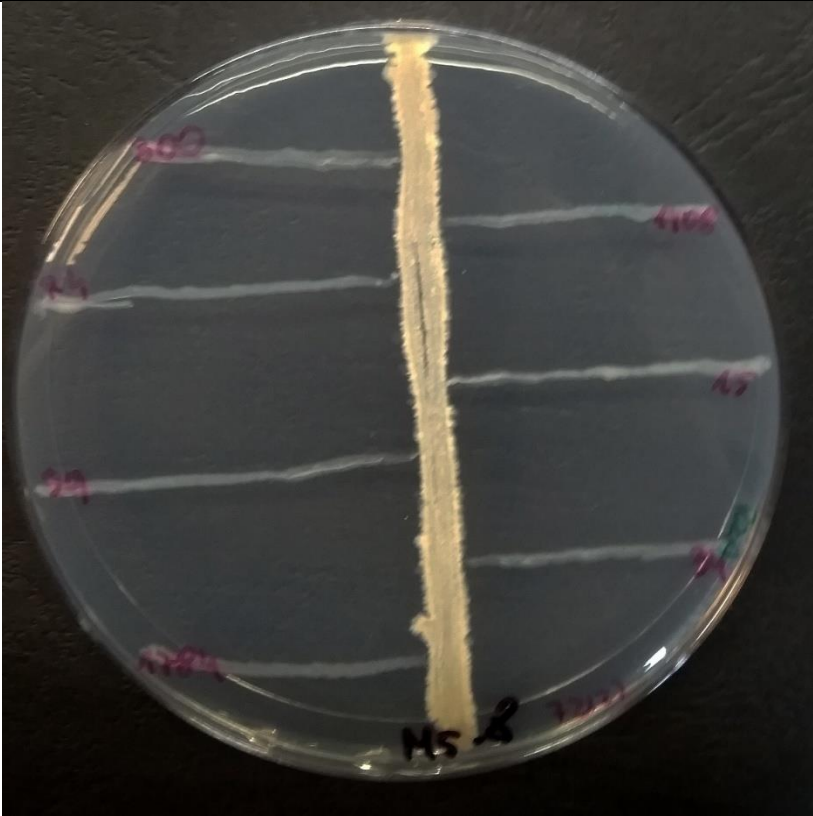
Salmonella enterica
Seftenberg 87 (National
Salmonella Center, Gdańsk,
Poland)

Salmonella enterica
Bovismorbificans 300
(National Salmonella
Center, Gdańsk, Poland)

Salmonella enterica
Gallinarum 74 (National
Salmonella Center, Gdańsk,
Poland)

Salmonella enterica
Cholerasuis 39 (National
Salmonella Center, Gdańsk,
Poland)

Salmonella enterica Hadar
1784 (National Salmonella
Center, Gdańsk, Poland)



M5_8 72h II

Salmonella enterica Agona
1408 (National Salmonella
Center, Gdańsk, Poland)

-

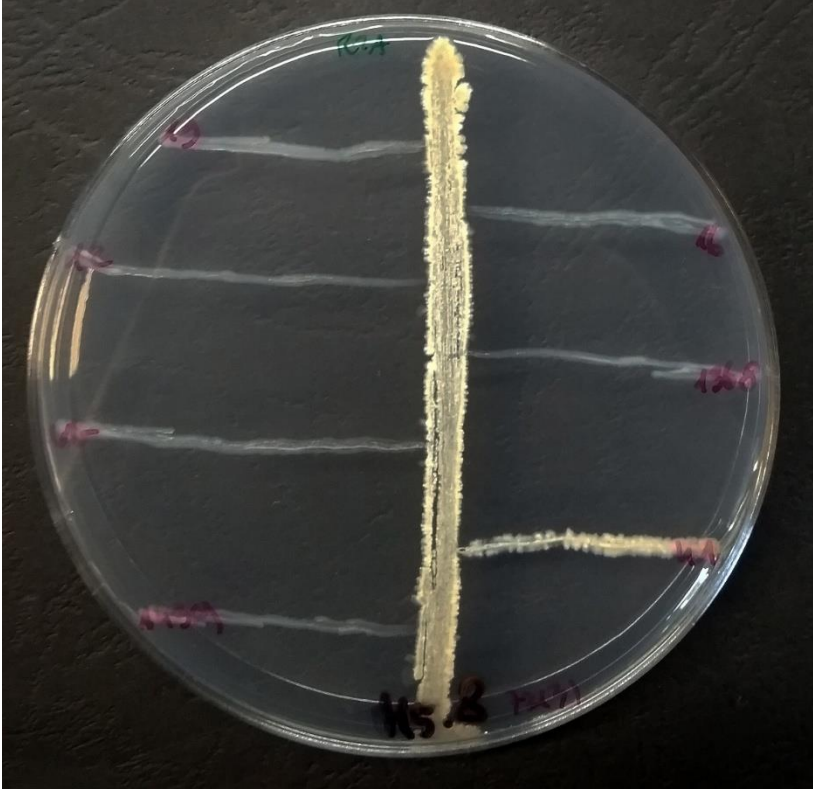
-

Salmonella enterica
Typhimurium 13 (National
Salmonella Center, Gdańsk,
Poland)

Salmonella enterica
Typhimurium 12 (National
Salmonella Center, Gdańsk,
Poland)

-

Salmonella enterica
Cholerasuis 1439 (National
Salmonella Center, Gdańsk,
Poland)



M5_8 72h III

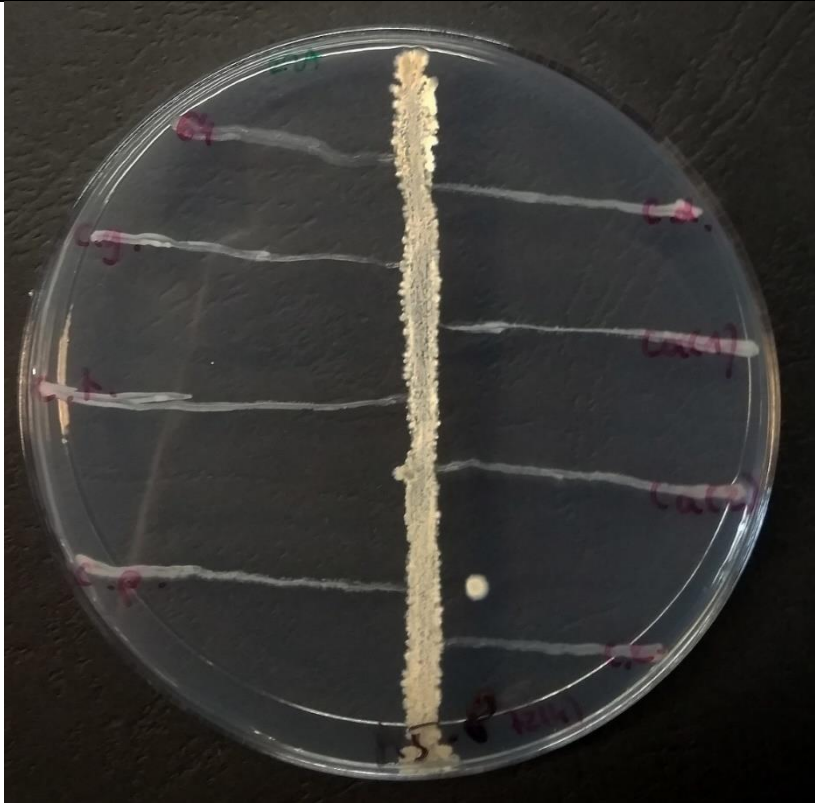
Salmonella enterica
Heidelberg 16 (National
Salmonella Center, Gdańsk,
Poland)

Salmonella enterica
Kentucky 1368 (National
Salmonella Center, Gdańsk,
Poland)

Salmonella enterica
Virchow 41 (National
Salmonella Center, Gdańsk,
Poland)

Salmonella enterica
Enteritidis 64 (National
Salmonella Center, Gdańsk,
Poland)

-
-
-



-
-
-
-

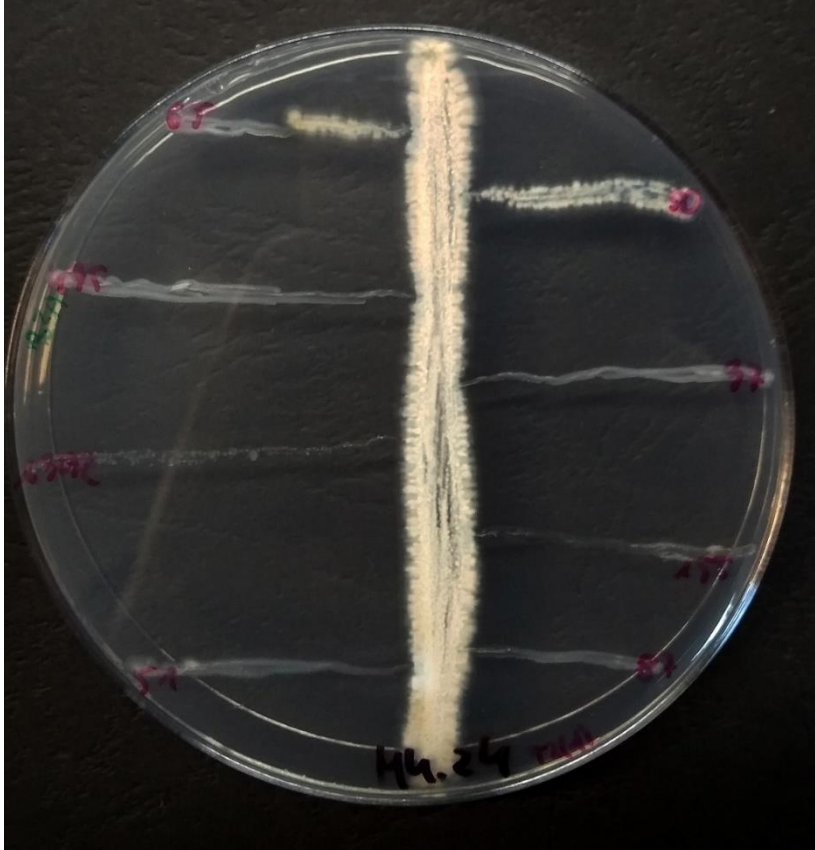
M5_8 72h IV

Salmonella enterica Dubin
65 (National Salmonella
Center, Gdańsk, Poland)

Salmonella enterica
Saindpaul 435 (National
Salmonella Center, Gdańsk,
Poland)

Salmonella enterica
Enteritidis 1392 (National
Salmonella Center, Gdańsk,
Poland)

Salmonella enterica
Newport 51 (National
Salmonella Center, Gdańsk,
Poland)



M4_24 72h I

Salmonella enterica
Newport 50 (National
Salmonella Center, Gdańsk,
Poland)

Salmonella enterica
Cholerasuis 37 (National
Salmonella Center, Gdańsk,
Poland)

Salmonella enterica Infantis
155 (National Salmonella
Center, Gdańsk, Poland)

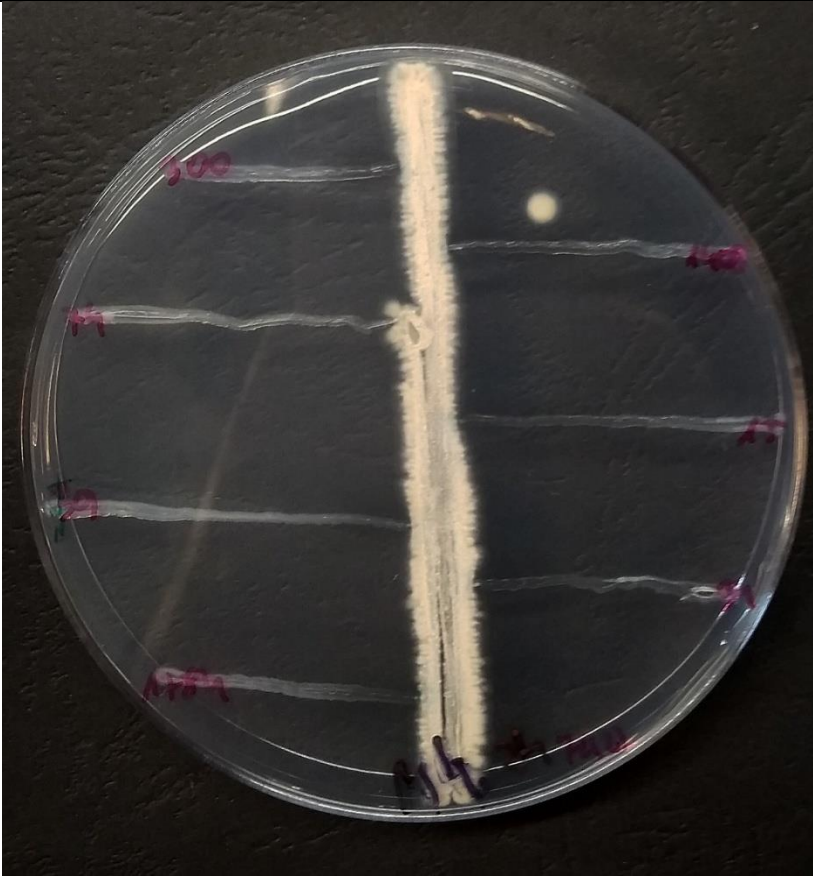
Salmonella enterica
Seftenberg 87 (National
Salmonella Center, Gdańsk,
Poland)

Salmonella enterica
Bovismorbificans 300
(National Salmonella
Center, Gdańsk, Poland)

Salmonella enterica
Gallinarum 74 (National
Salmonella Center, Gdańsk,
Poland)

Salmonella enterica
Cholerasuis 39 (National
Salmonella Center, Gdańsk,
Poland)

Salmonella enterica Hadar
1784 (National Salmonella
Center, Gdańsk, Poland)



M4_24 72h II

Salmonella enterica Agona
1408 (National Salmonella
Center, Gdańsk, Poland)

-

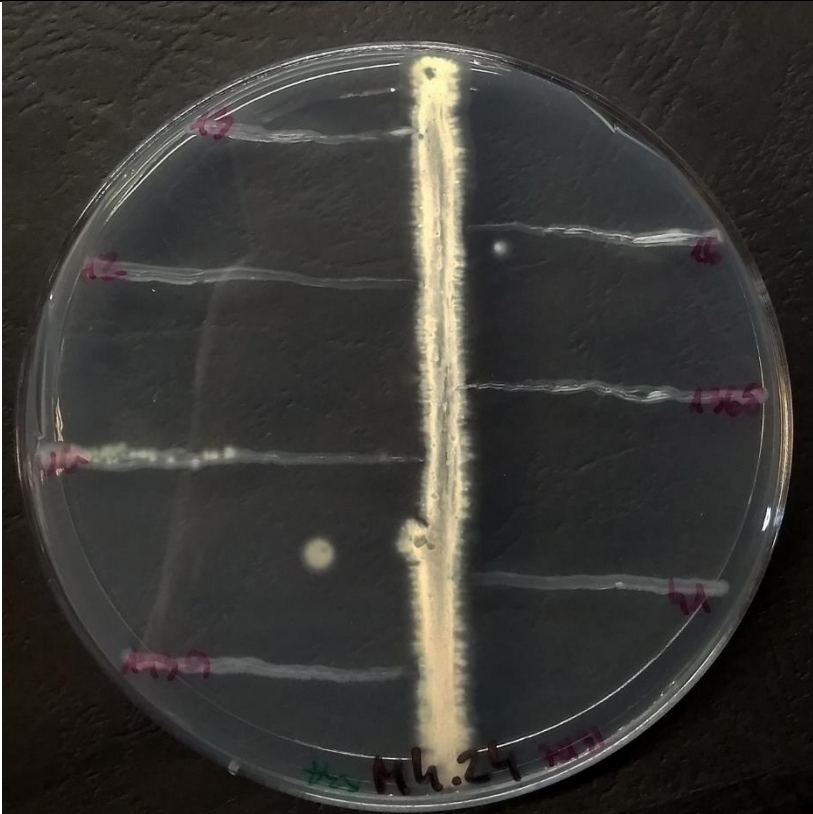
-

Salmonella enterica
Typhimurium 13 (National
Salmonella Center, Gdańsk,
Poland)

Salmonella enterica
Typhimurium 12 (National
Salmonella Center, Gdańsk,
Poland)

-

Salmonella enterica
Cholerasuis 1439 (National
Salmonella Center, Gdańsk,
Poland)



M4_24 72h III

Salmonella enterica
Heidelberg 16 (National
Salmonella Center, Gdańsk,
Poland)

Salmonella enterica
Kentucky 1368 (National
Salmonella Center, Gdańsk,
Poland)

Salmonella enterica
Virchow 41 (National
Salmonella Center, Gdańsk,
Poland)

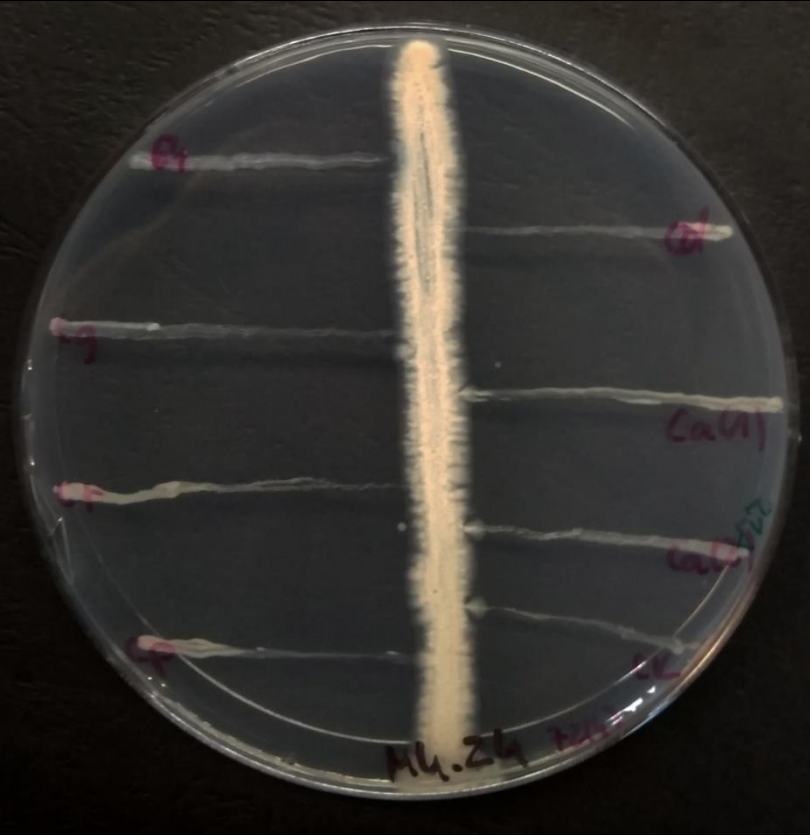
<p><i>Salmonella enterica</i> Enteritidis 64 (National Salmonella Center, Gdańsk, Poland)</p> <p>-</p> <p>-</p> <p>-</p>		<p>-</p> <p>-</p> <p>-</p> <p>-</p>
	<p>M4_24 72h IV</p>	

Figure S1. Antibacterial and antifungal activities of newly isolated *Streptomyces* strains M4_24 and M5_8, as revealed by the streak-test. Name of the *Streptomyces* strain and time of incubation are shown at the bottom of each panel. Names of streaked bacterial and fungal strains (and their origin (collection)) are provided in left and right panels.