

Gold Nanoparticles-MWCNT Based Aptasensor for Early Diagnosis of Prostate Cancer

Aseel Alnaimi ^{1,2,*}, Ammar Al-Hamry ², Yahia Makableh ³, Anurag Adiraju ² and Olfa Kanoun ^{2,*}

¹ Biomedical Engineering Department, Jordan University of Science and Technology, Irbid 22110, Jordan

² Professorship Measurement and Sensor Technology, Chemnitz University of Technology, 09111 Chemnitz, Germany

³ Institute of Nanotechnology, Jordan University of Science and Technology, Irbid 22110, Jordan

* Correspondence: aalnaimi18@eng.just.edu.jo (A.A.); olfa.kanoun@etit.tu-chemnitz.de (O.K.)

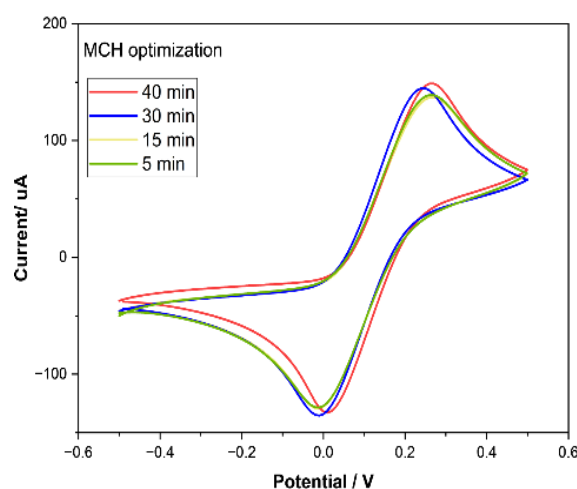


Figure S1. Cyclic voltammetry of MCH/aptamer/MWCNT-AuNPs incubation process with different time to optimize the efficacy of blocking non-specific sides of suggested aptamer.

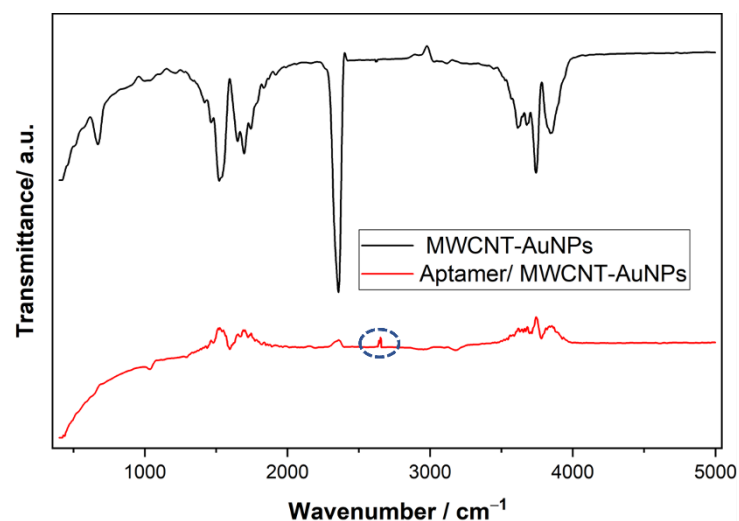


Figure S2. FT-IR of MWCNT-AuNPs electrode and immobilized electrode, with the thiol bond (assigned by dashed circle).