



Supporting Information

Alkali-Etched NiCoAl-LDH with Improved Electrochemical Performance for Asymmetric Supercapacitors

Liyin Hou ^{1,2}, Xufeng Zhou ², Lina Kong ¹, Zhipeng Ma ¹, Li Su ¹, Zhaoping Liu ^{2,*},[†] and Guangjie Shao ^{1,3,†*}

¹ College of Environmental and Chemical Engineering, Yanshan University, Qinhuangdao 066004, China

² Key Laboratory of Graphene Technologies and Applications of Zhejiang Province and Advanced Li-Ion Battery Engineering Laboratory, Ningbo Institute of Materials Technology & Engineering, Chinese Academy of Sciences, Zhejiang 315201, China

³ State Key Laboratory of Metastable Materials Science and Technology, Yanshan University, Qinhuangdao 066004, China

* Correspondence: liuzp@nimte.ac.cn (Z.L.); shaoguangjie@ysu.edu.cn (G.S.)

† These authors contributed equally to this work.

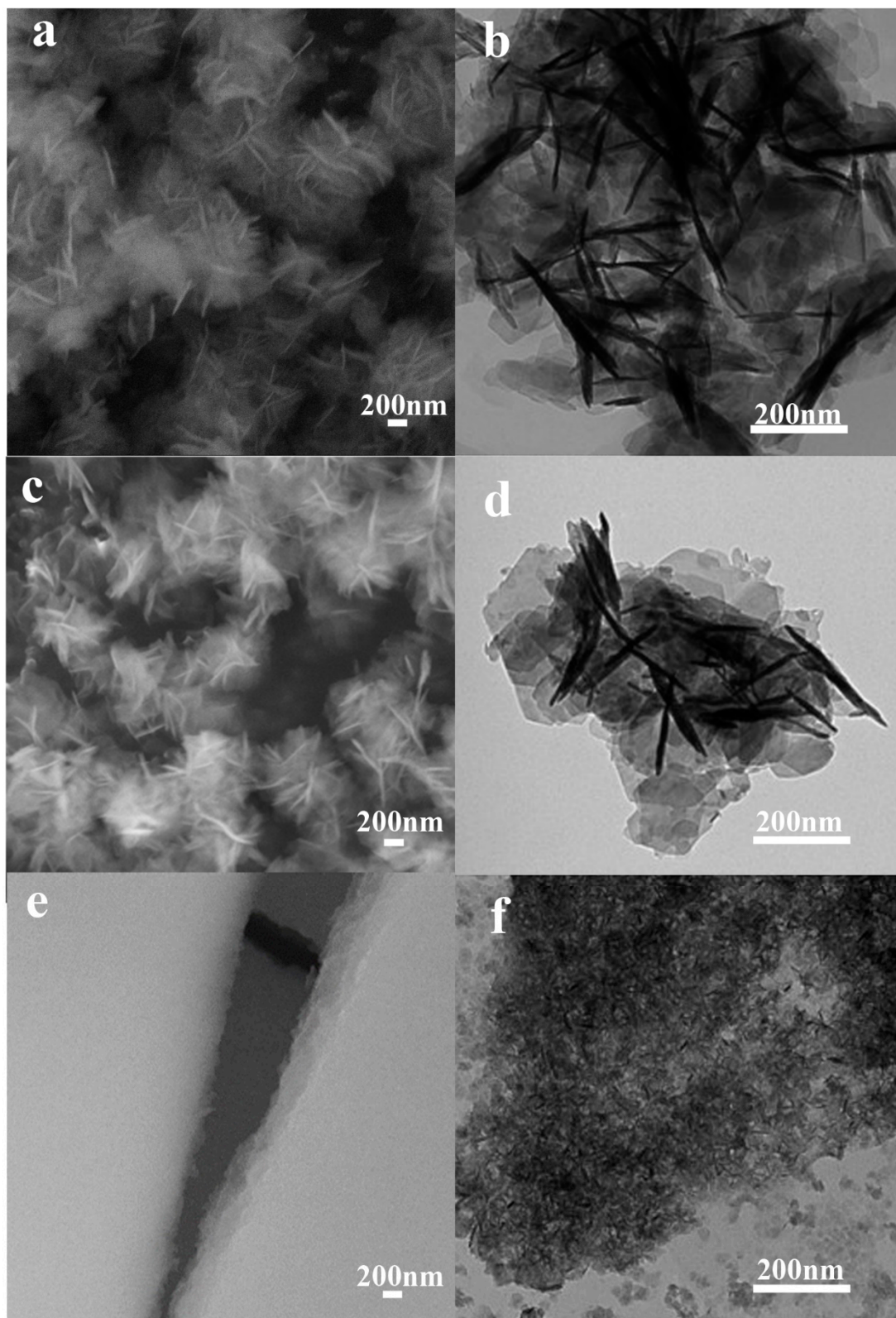


Figure S1. (a) SEM of NiCoAl-921, (b) TEM of NiCoAl-921; (c) SEM of 6M NaOH etched NiCoAl-LDH, (d) TEM of 6M NaOH etched NiCoAl-LDH; (e) SEM of 10 M NaOH etched NiCoAl-LDH, (f) TEM of 10 M NaOH etched NiCoAl-LDH.

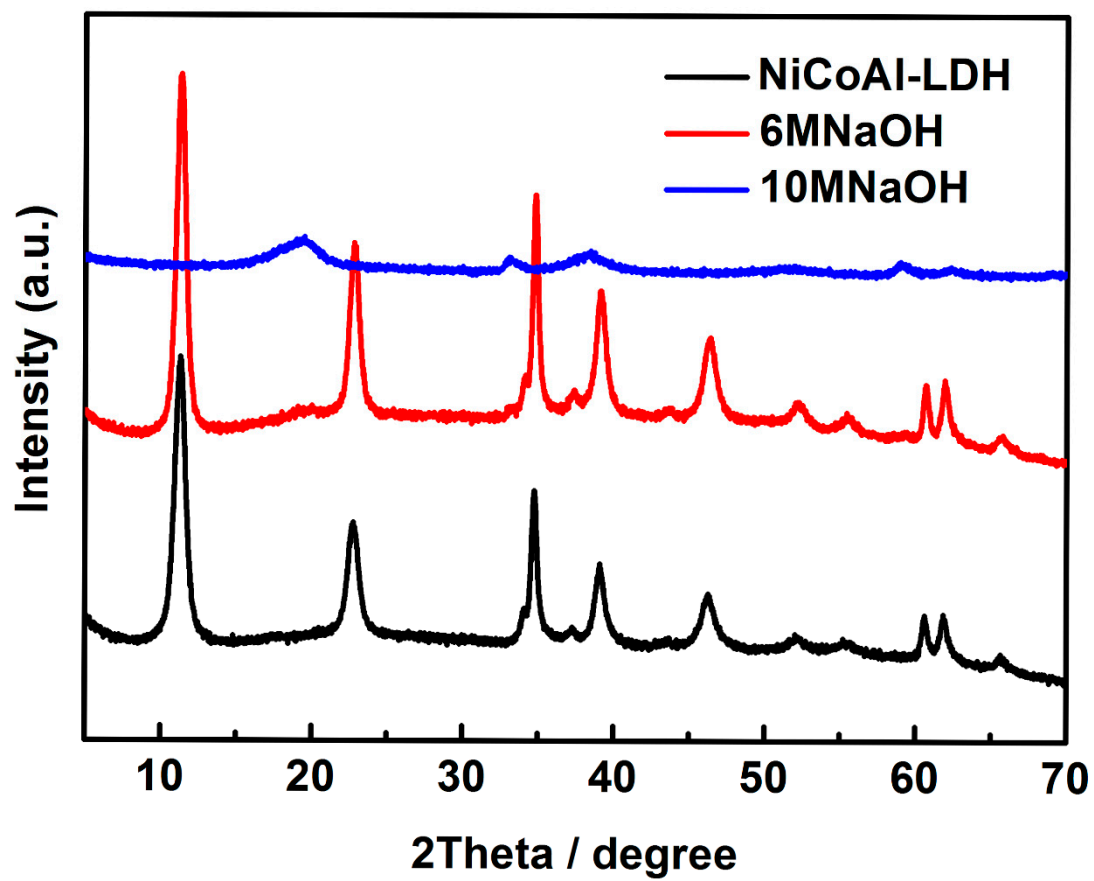


Figure S2. XRD pattern of alkali etaching NiCoAl-LDH with different concentration.