

Supplementary Materials

Enhanced Tribological Performance of Low-Friction Nanocomposite $\text{WSe}_x\text{S}_y/\text{NP-W}$ Coatings Prepared by Reactive PLD

Vyacheslav Fominski ^{1,*}, Dmitry Fominski ¹, Maxim Demin ², Roman Romanov ¹ and Alexander Goikhman ²

¹ National Research Nuclear University MEPhI (Moscow Engineering Physics Institute), Kashirskoe shosse. 31, 115409 Moscow, Russia

² Kant Baltic Federal University, A. Nevskogo St. 14, 236016 Kaliningrad, Russia

* Correspondence: vyfominskij@mephi.ru

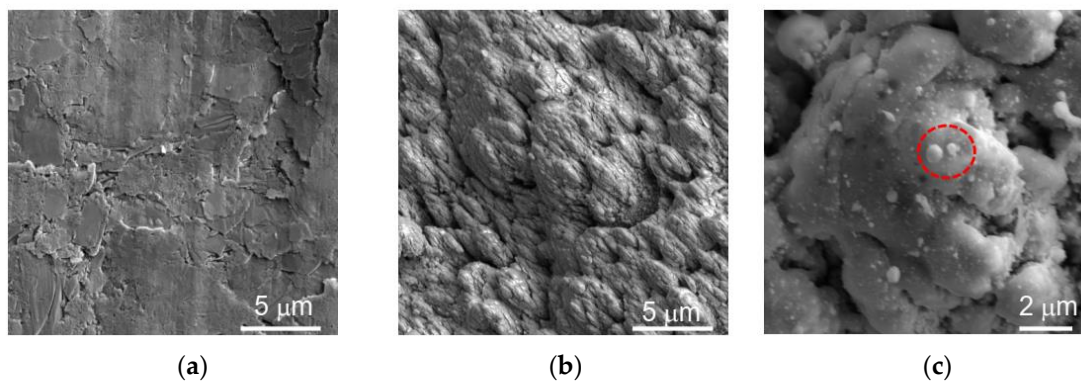


Figure S1. SEM images of (a) as prepared and (b,c) laser ablated WSe_2 target with two magnifications; the area for EDS analysis is indicated in a red circle in (c).

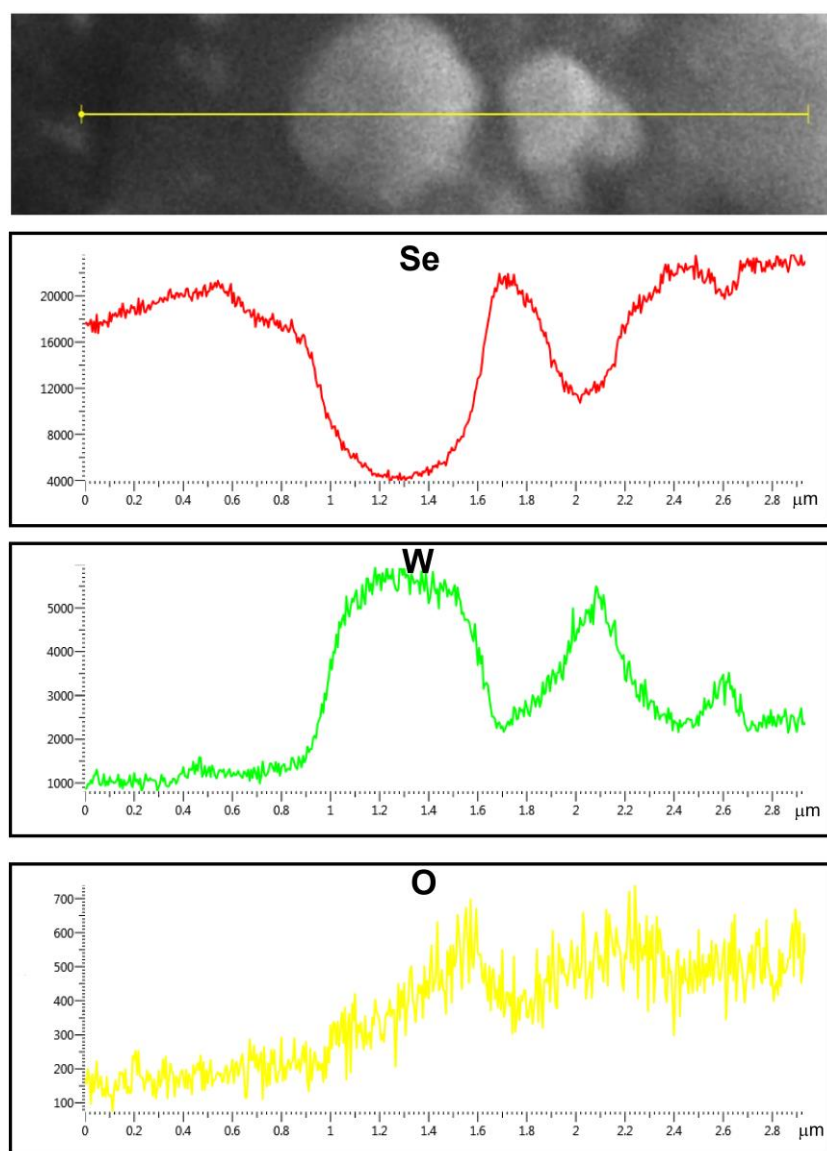
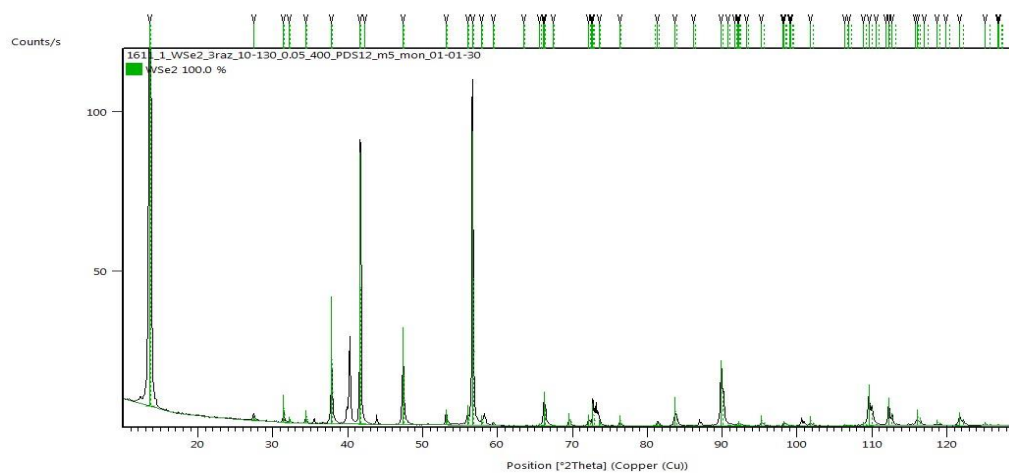
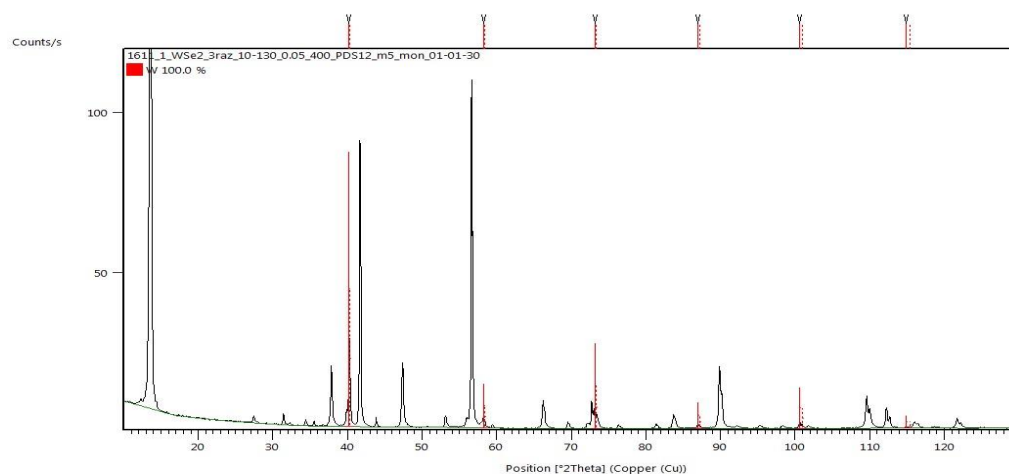


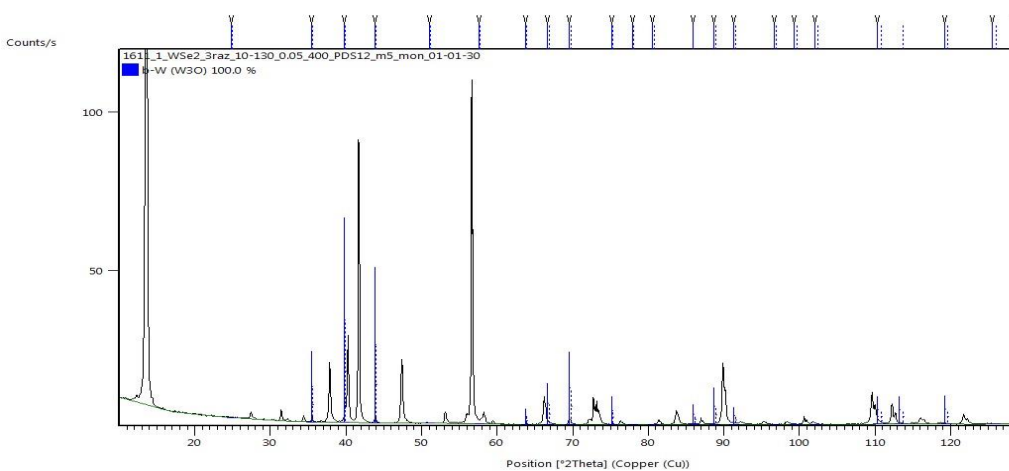
Figure S2. Distribution of elements in a local area of the WSe_2 target subjected to laser ablation. The area is indicated in Figure S1c, and it contains spherical particles which were formed after laser ablation.



(a)



(b)



(c)

Figure S3. XRD pattern of laser ablated WSe₂ target exhibits the content of (a) WSe₂ (P6₃/mmc), (b) α-W (Im3m), and (c) W₃O/β-W (Pm3n) phases.

The diffraction patterns were measured on a PANalytical Empyrean Series 2 X-ray diffractometer using monochromatized CuKα radiation. The phase composition was analyzed using the PANalytical High Score Plus software and the ICDD PDF-2 database.

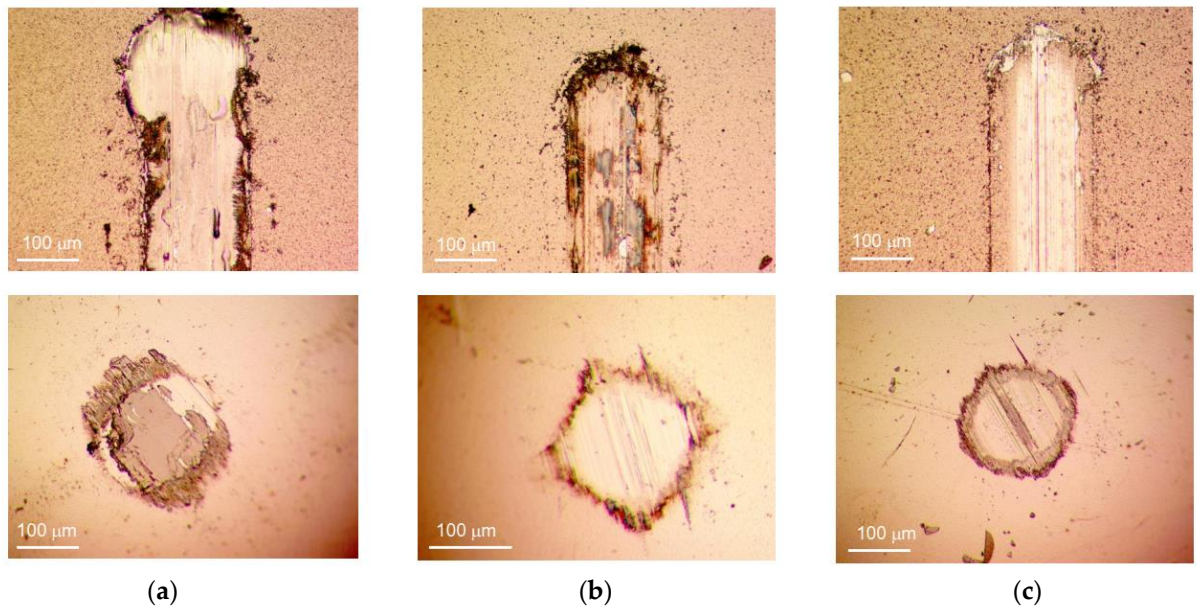


Figure S4. Optical images of the wear tracks and wear scars for (a) WSe_x/NP-W, (b) WSe_xS_y/NP-W_3.6, and (c) WSe_xS_y/NP-W_9 coatings after tribotesting in N₂-enriched environment at a load of 5 N at -100°C. The test duration for each coating is indicated in Figure 7.