



Table S1. Qualitative analysis obtained from GC/MS

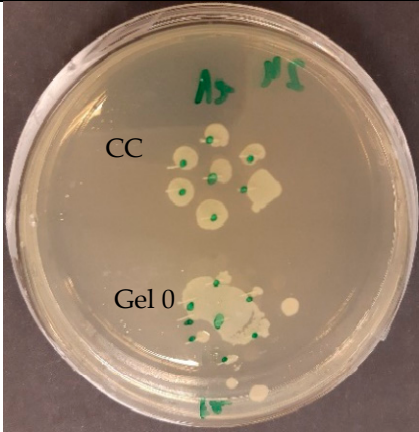
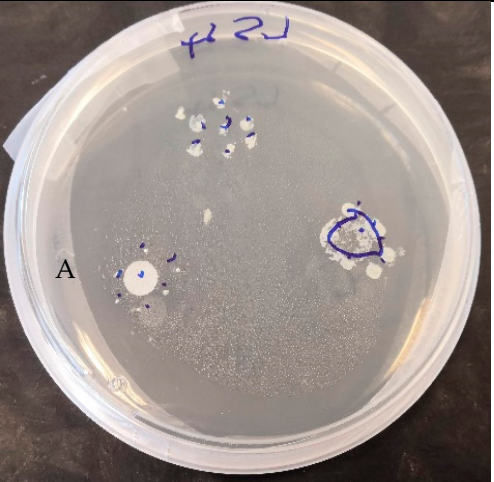

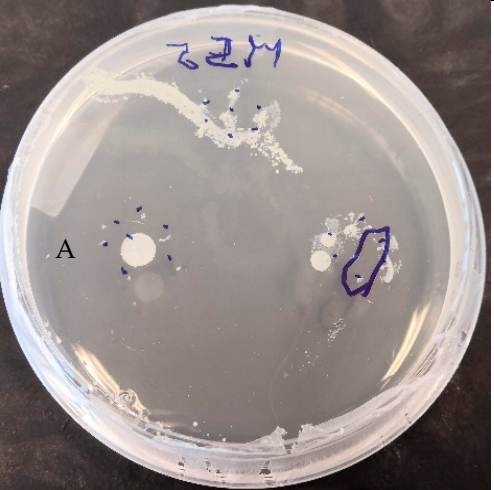
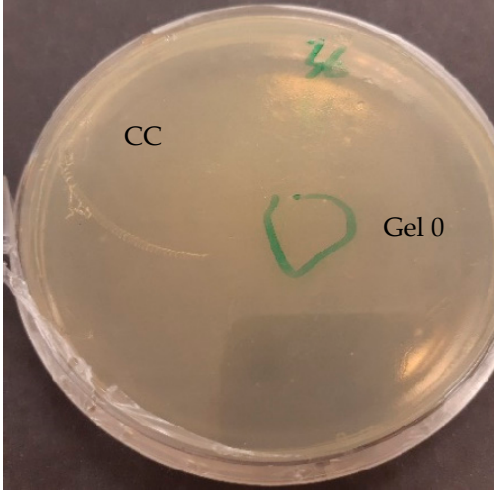
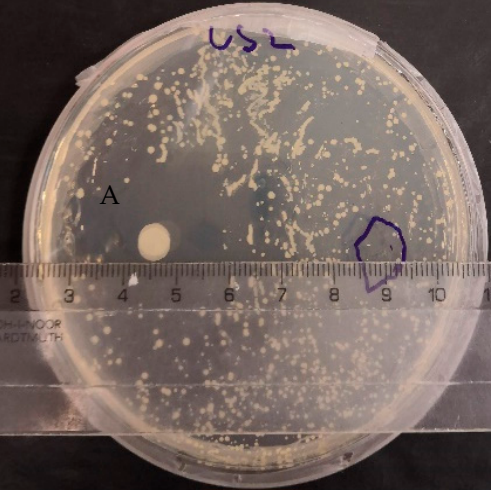
| RT    | RI<br>exp | RI lit | Compound                      | Lavender F<br>Bulgaria | Lavender S<br>Provence | Mint F<br>Spain | Mint S<br>India |
|-------|-----------|--------|-------------------------------|------------------------|------------------------|-----------------|-----------------|
| 5.67  | 1020      | 1026   | $\alpha$ -Pinene              | D                      | D                      | D               | D               |
| 5.81  | 1027      | 1027   | $\alpha$ -Thujene             | D                      | D                      |                 |                 |
| 6.66  | 1068      | 1069   | Camphene                      | D                      | D                      | D               | D               |
| 7.71  | 1115      | 1111   | $\beta$ -Pinene               | D                      | D                      | D               | D               |
| 8.07  | 1129      | 1124   | Sabinene                      | D                      | D                      | D               | D               |
| 8.79  | 1157      | 1147   | 3-Carene                      | D                      | D                      | D               |                 |
| 9.24  | 1174      | 1161   | Myrcene                       | D                      | D                      | D               | D               |
| 9.6   | 1188      | 1157   | 4-Carene                      |                        |                        | D               |                 |
| 9.63  | 1190      | 1180   | $\alpha$ -Terpinene           |                        |                        |                 | D               |
| 10.18 | 1210      | 1200   | D-Limonene <sup>s</sup>       | D                      | D                      | D               | D               |
| 10.42 | 1219      | 1212   | Eucalyptol                    | D                      | D                      | D               | D               |
| 11.2  | 1249      | 1235   | (Z)- $\beta$ -Ocimene         | D                      | D                      | D               | D               |
| 11.45 | 1258      | 1246   | $\gamma$ -Terpinene           |                        |                        | D               | D               |
| 11.69 | 1267      | 1250   | (E)- $\beta$ -Ocimene         | D                      | D                      | D               |                 |
| 11.96 | 1277      | n.r.   | Isolimonene                   |                        |                        | D               | D               |
| 12.15 | 1284      | 1277   | m-Cymene                      |                        |                        | D               | D               |
| 12.2  | 1286      | 1298   | o-Cymene                      | D                      | D                      |                 | D               |
| 12.47 | 1296      | 1283   | Terpinolene                   | D                      | D                      | D               | D               |
| 13.91 | 1350      | 1355   | 6-Methylhept-5-en-2-one       |                        |                        |                 | D               |
| 14.23 | 1362      | 1354   | 1-Hexanol                     | D                      | D                      | D               |                 |
| 14.41 | 1369      | 1367   | 3-Nonanone                    |                        |                        | D               | D               |
| 14.9  | 1387      | n.r.   | 3,4-Dimethyl-2,4,6-octatriene | D                      |                        |                 |                 |
| 15    | 1391      | 1379   | 1-Octen-3-yl acetate          | D                      | D                      |                 |                 |
| 15.12 | 1396      | 1382   | (Z)-3-Hexen-1-ol              |                        |                        | D               | D               |
| 15.29 | 1402      | 1393   | 3-Octanol                     | D                      | D                      | D               | D               |
| 15.92 | 1427      | 1414   | Hexyl butanoate               | D                      | D                      |                 |                 |
| 16.2  | 1437      | 1429   | (Z)-Thujone                   |                        |                        | D               | D               |
| 16.67 | 1456      | 1437   | p-Cymenene                    |                        |                        | D               | D               |
| 16.82 | 1462      | 1450   | 1-Octen-3-ol                  | D                      | D                      |                 |                 |
| 17    | 1469      | 1449   | Acetic acid                   | D                      | D                      |                 |                 |
| 17.35 | 1482      | 1473   | Menthone                      |                        |                        | D               | D               |
| 18.12 | 1512      | 1487   | Menthofurane                  |                        |                        |                 | D               |
| 18.33 | 1521      | 1528   | (E)-p-Menthan-3-one           |                        |                        | D               | D               |
| 18.68 | 1535      | 1532   | (+)-2-Bornanone               | D                      | D                      |                 |                 |
| 18.77 | 1539      | 1526   | $\beta$ -Bourbonene           |                        |                        | D               | D               |
| 18.96 | 1547      | 1554   | Menthyl acetate               |                        |                        |                 | D               |
| 19.2  | 1556      | n.r.   | p-Menth-4-en-3-one            |                        |                        | D               | D               |
| 19.32 | 1561      | 1547   | Linalool <sup>s</sup>         | D                      | D                      | D               |                 |
| 19.59 | 1572      | 1556   | 1-Octanol                     |                        |                        | D               |                 |
| 19.91 | 1585      | 1680   | Linalyl butyrate              | D                      | D                      |                 |                 |
| 20.14 | 1595      | 1597   | Isopulegone                   |                        |                        | D               |                 |

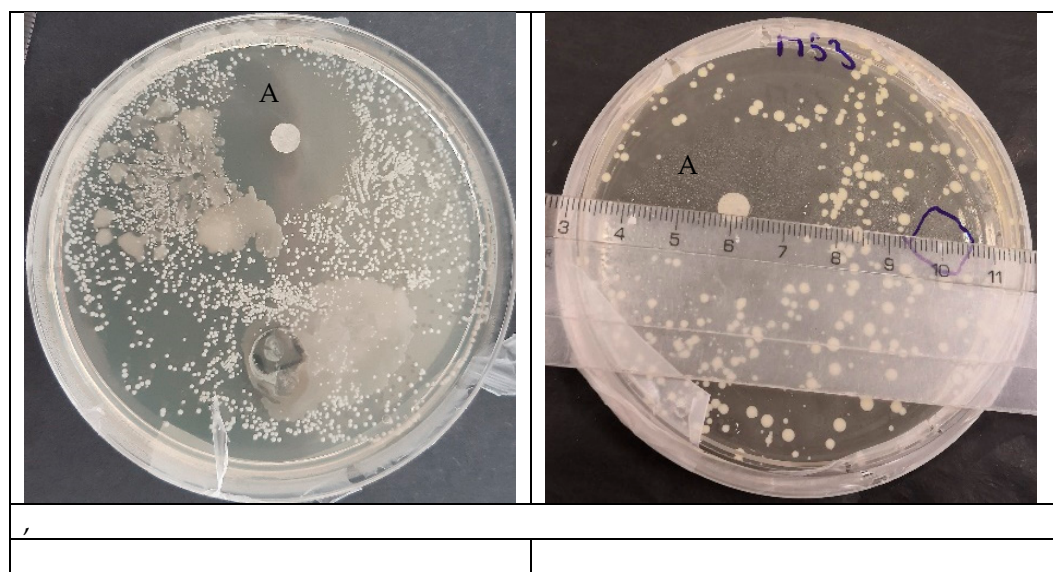
|       |      |      |                                   |   |   |  |   |   |
|-------|------|------|-----------------------------------|---|---|--|---|---|
| 20.23 | 1598 | 1576 | $\beta$ -Ylangene                 |   |   |  | D |   |
| 20.43 | 1607 | 1593 | Bergamotene                       | D | D |  |   |   |
| 20.45 | 1608 | 1596 | (E)-Isopulegone                   |   |   |  | D |   |
| 20.52 | 1611 | 1604 | Isocaryophyllene                  |   | D |  |   |   |
| 20.61 | 1614 | 1576 | $\alpha$ -Santalene               | D | D |  |   |   |
| 20.66 | 1617 | 1636 | Menthol                           |   |   |  | D | D |
| 20.73 | 1620 | 1580 | Bornyl acetate                    | D | D |  |   |   |
| 21.03 | 1632 | 1640 | Terpinen-4-ol acetate             | D | D |  |   |   |
| 21.13 | 1636 | 1606 | Levandulyl acetate                | D | D |  |   |   |
| 21.24 | 1641 | 1627 | $\beta$ -Caryophyllene            | D | D |  | D |   |
| 21.35 | 1646 | n.r. | hexyl (E)-2-Methylbut-2-enolate   |   | D |  |   |   |
| 21.41 | 1648 | 1653 | (Z)- $\beta$ -Farnesene           | D | D |  | D | D |
| 21.82 | 1666 | 1587 | Cedrene                           | D | D |  |   |   |
| 22.16 | 1680 | 1661 | Pulegone                          | D | D |  | D |   |
| 22.22 | 1683 | 1676 | $\epsilon$ -Muurolene             |   |   |  | D |   |
| 22.3  | 1686 | 1665 | (E)- $\beta$ -Farnesene           | D | D |  |   |   |
| 22.38 | 1689 | 1621 | p-Menthan-1-ol                    |   |   |  | D | D |
| 22.52 | 1695 | 1677 | Levandulol                        | D | D |  | D |   |
| 22.61 | 1699 | 1679 | Cryptone                          | D | D |  |   |   |
| 22.65 | 1701 | 1674 | $\beta$ -Humulene                 |   |   |  | D | D |
| 22.71 | 1704 | 1663 | (Z)-Verbenol                      | D | D |  | D | D |
| 22.9  | 1712 | 1726 | $\alpha$ -Muurolene               |   |   |  | D | D |
| 23.07 | 1720 | 1697 | $\alpha$ -Terpineol               | D | D |  | D | D |
| 23.2  | 1725 | 1701 | Borneol                           | D | D |  | D | D |
| 23.42 | 1735 | 1541 | $\beta$ -Cubebene                 | D | D |  |   |   |
| 23.62 | 1744 | 1723 | Neryl acetate                     | D | D |  |   |   |
| 23.82 | 1753 | 1733 | $\alpha$ -Citral <sup>s</sup>     | D | D |  |   |   |
| 23.95 | 1759 | 1738 | Carvone                           | D | D |  | D | D |
| 24.15 | 1768 | 1720 | Dihydrocarveol                    |   |   |  | D |   |
| 24.3  | 1774 | 1781 | 1-Decanol                         |   |   |  | D | D |
| 24.32 | 1775 | 1752 | Geranyl acetate                   | D | D |  |   |   |
| 24.35 | 1776 | n.r. | $\delta$ -Cadinene                |   |   |  |   | D |
| 24.41 | 1779 | 1765 | Citronellol <sup>s</sup>          |   |   |  | D |   |
| 24.45 | 1781 | 1765 | $\gamma$ -Cadinene                | D | D |  |   |   |
| 24.87 | 1800 | 1794 | p-Methylacetophenone              | D | D |  | D |   |
| 25.02 | 1807 | 1814 | Cuminaldehyde                     | D | D |  |   |   |
| 25.11 | 1811 | 1796 | Myrtenol                          |   |   |  | D |   |
| 25.36 | 1823 | 1739 | Linalool oxide (pyranoid)         | D | D |  |   |   |
| 25.52 | 1830 | 1830 | Buccocamphor                      |   |   |  | D |   |
| 25.68 | 1837 | 1830 | 2,6-Dimethyl-3,5,7-oktatrien-2-ol | D |   |  |   |   |
| 25.79 | 1843 | n.r. | E-pinokarveol                     | D |   |  |   |   |
| 26    | 1852 | 1845 | (E)-Carveol                       | D | D |  | D | D |
| 26.19 | 1861 | 1845 | Geraniol <sup>s</sup>             | D | D |  |   |   |
| 26.33 | 1868 | 1852 | p-Cymen-8-ol                      | D | D |  | D | D |
| 26.76 | 1888 | 1889 | (Z)-Myrtanol                      |   |   |  | D | D |

|                                     |       |      |                                    |    |  |    |    |    |
|-------------------------------------|-------|------|------------------------------------|----|--|----|----|----|
| 26.83                               | 1891  | 1870 | Benzyl butanoate                   | D  |  |    |    |    |
| 26.98                               | 1898  | 1897 | Benzyl alcohol <sup>s</sup>        | D  |  | D  | D  |    |
| 27                                  | 1899  | 1796 | Myrtenol                           |    |  |    |    | D  |
| 27.14                               | 1906  | 1896 | 1(7),8-p-Menthadien-2-ol           |    |  |    | D  |    |
| 27.72                               | 1934  | 1905 | 2-Phenylethyl alcohol              | D  |  |    | D  | D  |
| 28.18                               | 1957  | 1963 | 3.7-Dimethyl-1.5-oktadien-3.7-diol | D  |  | D  |    |    |
| 28.32                               | 1963  | 1961 | (Z)-Jasmone                        |    |  |    | D  | D  |
| 29.18                               | 2003  | 1987 | Caryophyllene oxide                | D  |  | D  |    | D  |
| 29.53                               | 2015  | n.r. | (Z)- $\alpha$ -santalol            | D  |  |    |    |    |
| 30.1                                | 2037  | 2009 | p-Anisaldehyde                     |    |  |    | D  | D  |
| 30.11                               | 2038  | 2041 | (E)-Nerolidol                      | D  |  |    |    |    |
| 30.4                                | 2044  | 2033 | (E)-Cinnamaldehyde                 |    |  |    | D  |    |
| 30.46                               | 2046  |      | Caryophyllenyl alcohol             |    |  |    |    | D  |
| 306                                 | 2051  | 2080 | Cubenol                            | D  |  |    |    |    |
| 31.06                               | 2066  | 2046 | Viridiflorol                       |    |  |    |    | D  |
| 31.46                               | 2079  | 2098 | p-Cymen-7-ol                       | D  |  | D  |    |    |
| 31.83                               | 2091  | 2128 | 2.6-Dimethyl-1.7-oktadien-3.6-diol | D  |  | D  | D  |    |
| 32.71                               | 2126  | 2170 | $\tau$ -Cadinol                    | D  |  | D  |    |    |
| 32.76                               | 2128  | 2166 | Eugenol <sup>s</sup>               |    |  |    | D  | D  |
| 33.03                               | 2139  | 2176 | Thymol                             |    |  |    | D  | D  |
| 33.5                                | 21,58 | 2143 | $\beta$ -Bisabolole                |    |  | D  |    |    |
| 33.74                               | 2168  | n.r. | m-Cumenol                          | D  |  |    |    |    |
| 35.43                               | 2238  | n.r. | Mintlactone                        |    |  |    | D  | D  |
| 38.04                               | 2347  | n.r. | Coumarin <sup>s</sup>              | D  |  | D  |    |    |
| Total number of detected components |       |      |                                    | 66 |  | 60 | 62 | 50 |

<sup>s</sup>- standard, D – detected

**Table S2.** Agar diffusion tests of gelatin nanofibers with 20% addition of EOs

| <i>C. acnes</i>   |  |
|---|--|
| Control agar plate  | Lavender S Provence  |
|    |    |
| Mint F Spain  | Mint S India   |
|   |   |
| <i>S. epidermidis</i>   |  |
| Control agar plate - culture control spread on whole surface of the agar plate      | Lavender S Provence  |
|  |  |
| Mint F Spain  | Mint S India   |



A – ampicillin 25 ug/mL, the marked area represents where nanofibers were placed, CC -culture control, Gel 0 – gelatin nanofibers with no added EOs