



# Enhanced Gas Sensitivity of Au-Decorated Flowery WSe<sub>2</sub> Nanostructures

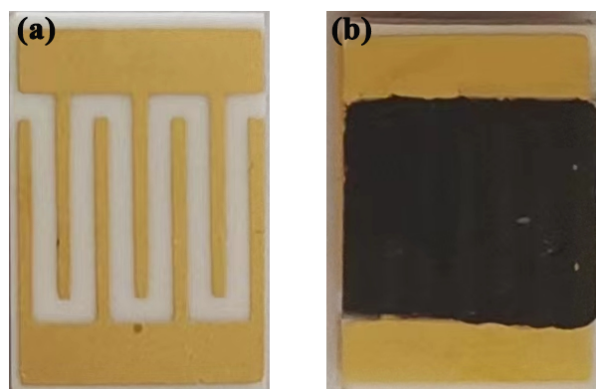
Xia Zhang <sup>1</sup>, Qiuhong Tan <sup>1,2,3,\*</sup>, Qianjin Wang <sup>1,2,3,\*</sup>, Peizhi Yang <sup>3</sup> and Yingkai Liu <sup>1,2,3</sup>

<sup>1</sup> College of Physics and Electronic Information, Yunnan Normal University, Yunnan Kunming 650500, China

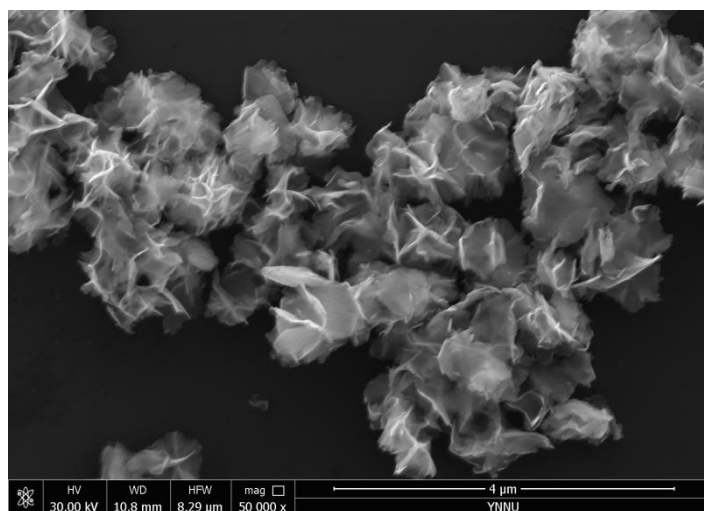
<sup>2</sup> Yunnan Provincial Key Laboratory for Photoelectric Information Technology, Yunnan Normal University, Yunnan Kunming 650500, China

<sup>3</sup> Key Laboratory of Advanced Technique & Preparation for Renewable Energy Materials, Ministry of Education, Yunnan Normal University, Kunming 650500, China

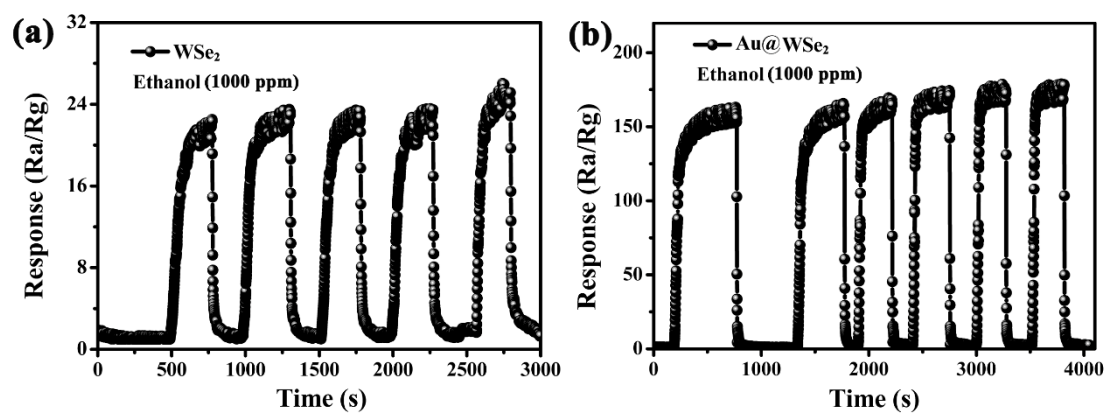
\* Correspondence: tanqihong1@126.com (Q.T.); qjwang@xtu.edu.cn (Q.W.)



**Figure S1.** (a) The deposited electrodes and (b) covered contact area.



**Figure S2.** The SEM image of an ensemble of the flowery WSe<sub>2</sub> nanostructures.



**Figure S3.** The reproducibility test of (a) pure  $WSe_2$  and (b)  $Au@WSe_2$  based sensors to 1000 ppm ethanol gas at their optimal operating temperature.