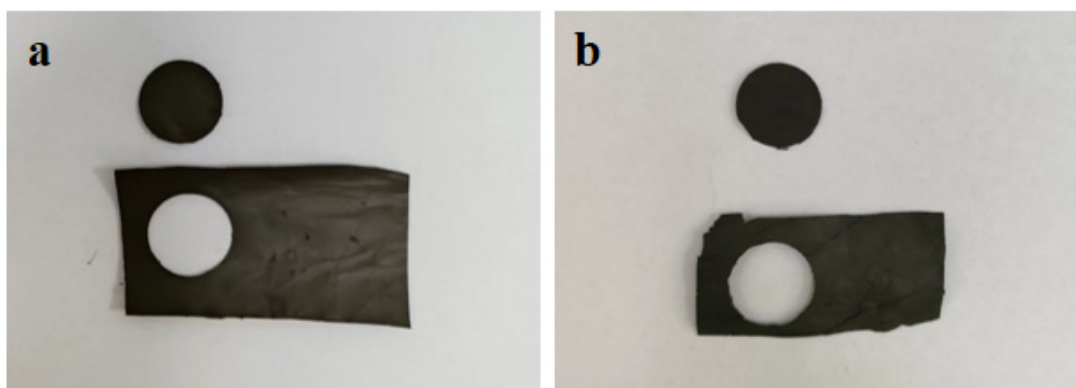


# Nb and Ni Nanoparticles Anchored on N-Doped Carbon Nanofiber Membrane as Self-Supporting Anode for High-Rate Lithium-Ion Batteries

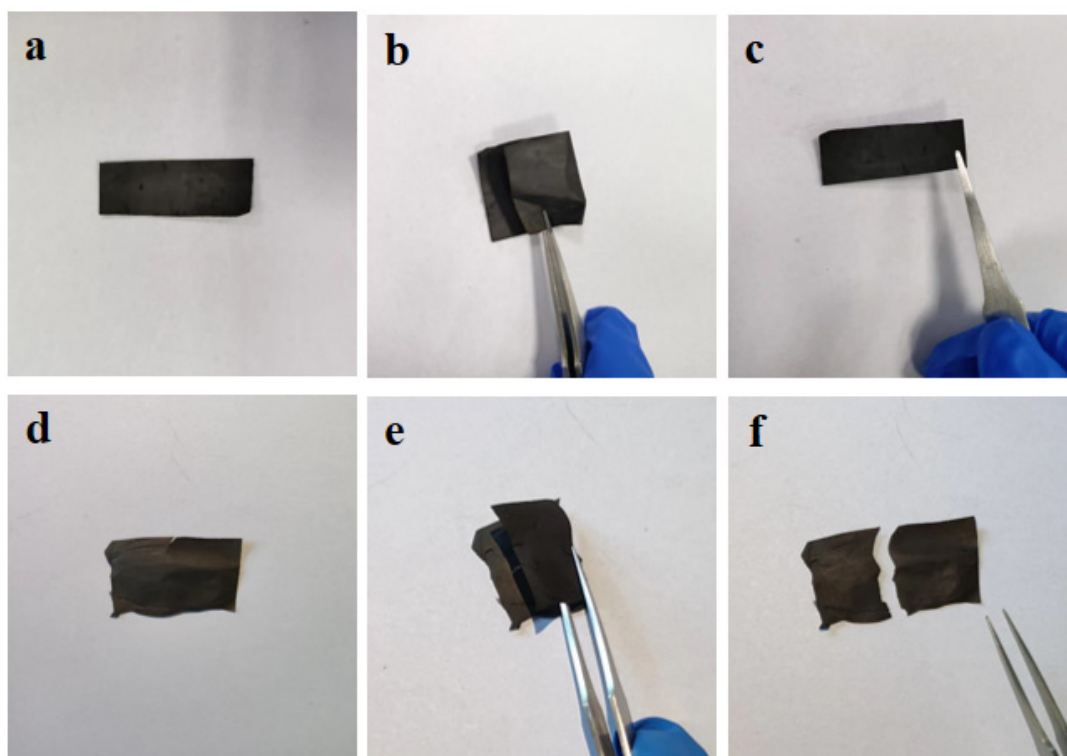
Yezheng Zhang, Shan Zhang, Shuo Zhao, Yingxue Cui, Jiabiao Lian and Guochun Li \*

Institute for Energy Research, Jiangsu University, Zhenjiang 212013, China

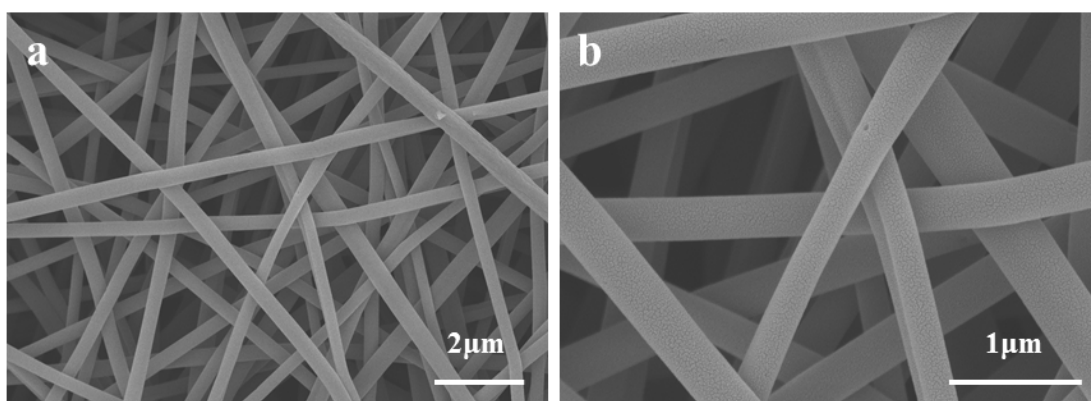
\* Correspondence: liguochun@ujs.edu.cn



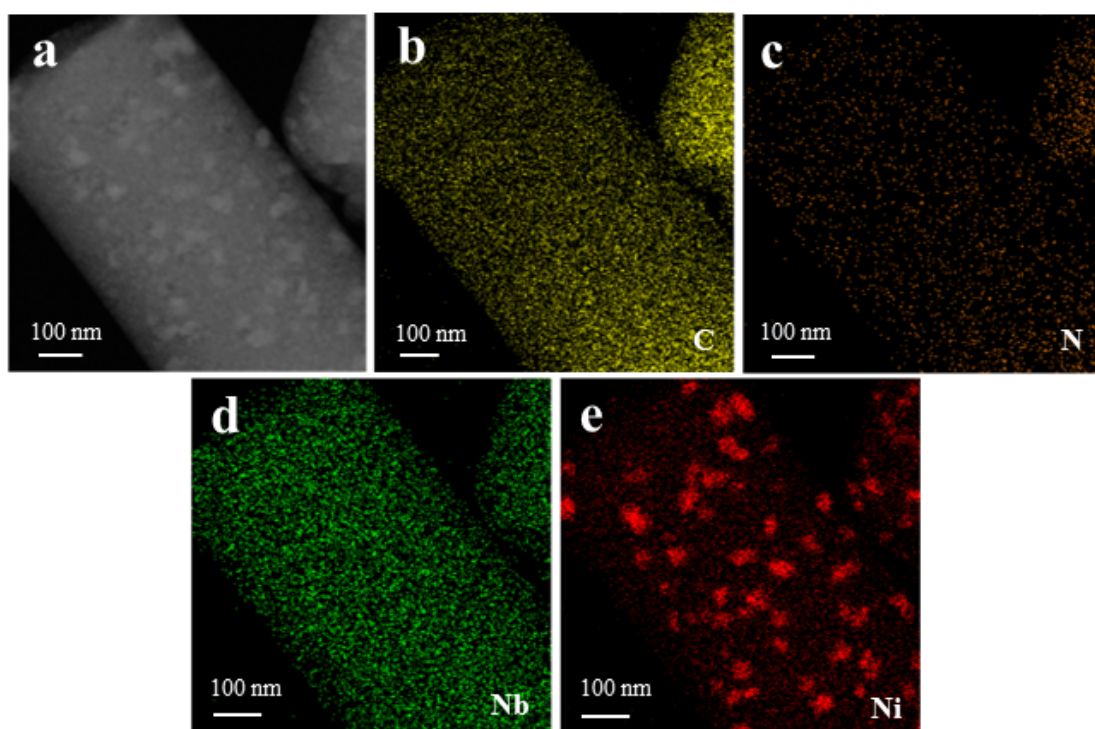
**Figure S1.** Digital images of (a,b) self-supporting Nb/Ni@NC and NC nanofiber membranes as electrode materials.



**Figure S2.** Folding tests of flexible Nb/Ni@NC and NC electrode materials.



**Figure S3.** SEM images of NC nanofiber with low/high magnification.



**Figure S4.** STEM image and EDS elemental mappings of Nb/Ni@NC nanofiber.

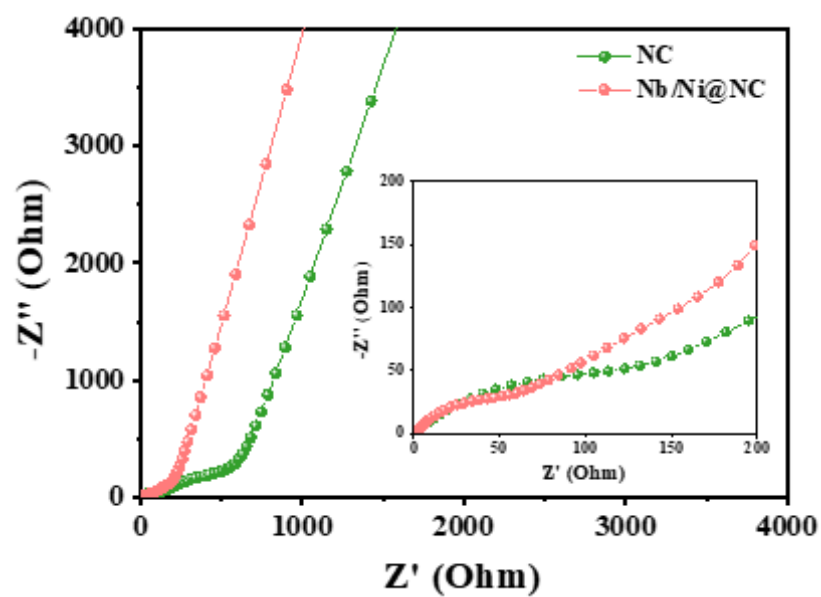


Figure S5. Nyquist plots of the flexible Nb/Ni@NC and NC electrodes.

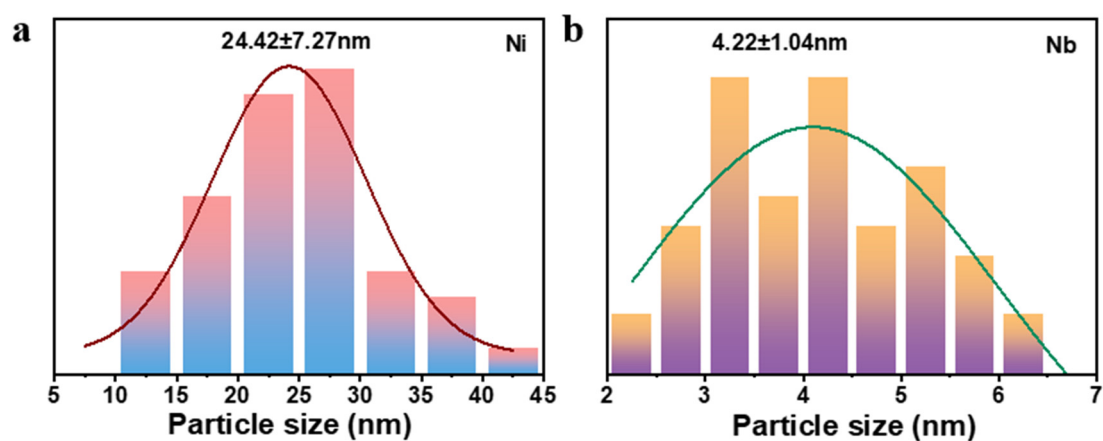


Figure S6. Results of particle size analysis of Ni (a) and Nb (b) nanoparticles.