



Synergy of Au–Pt for Enhancing Ethylene Photodegradation Performance of Flower-like TiO_2

Wanzhen Meng ¹, Yunrui Zhao ¹, Dujuan Dai ¹, Qianqian Zhang ^{1,*}, Zeyan Wang ¹, Yuanyuan Liu ¹, Zhaoke Zheng ¹, Hefeng Cheng ¹, Ying Dai ², Baibiao Huang ¹ and Peng Wang ^{1,*}

¹ State Key Laboratory of Crystal Materials, Shandong University, Jinan 250100, China

² School of Physics, Shandong University, Jinan 250100, China

* Correspondence: zhangqianqian@sdu.edu.cn (Q.Z.); pengwangicm@sdu.edu.cn (P.W.)

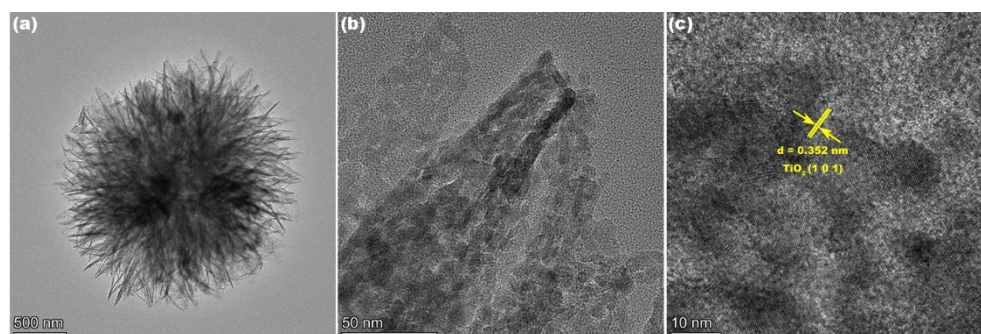


Figure S1. a, b)TEM, c) HRTEM images of TiO_2 MSs.

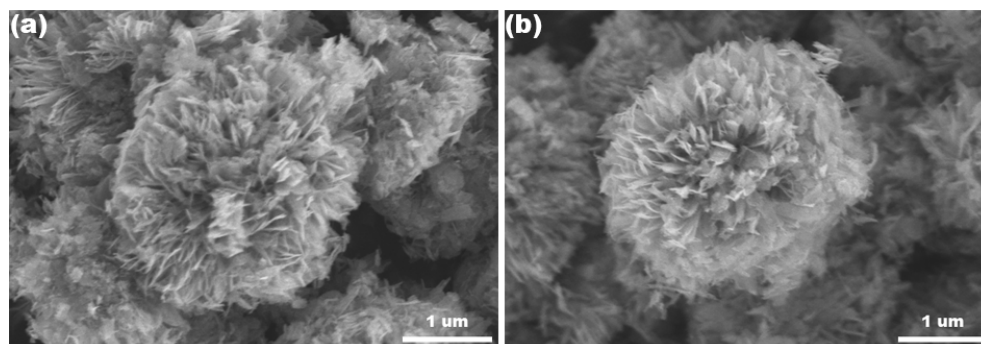


Figure S2. SEM images of a) Au- TiO_2 and b) Pt- TiO_2 .

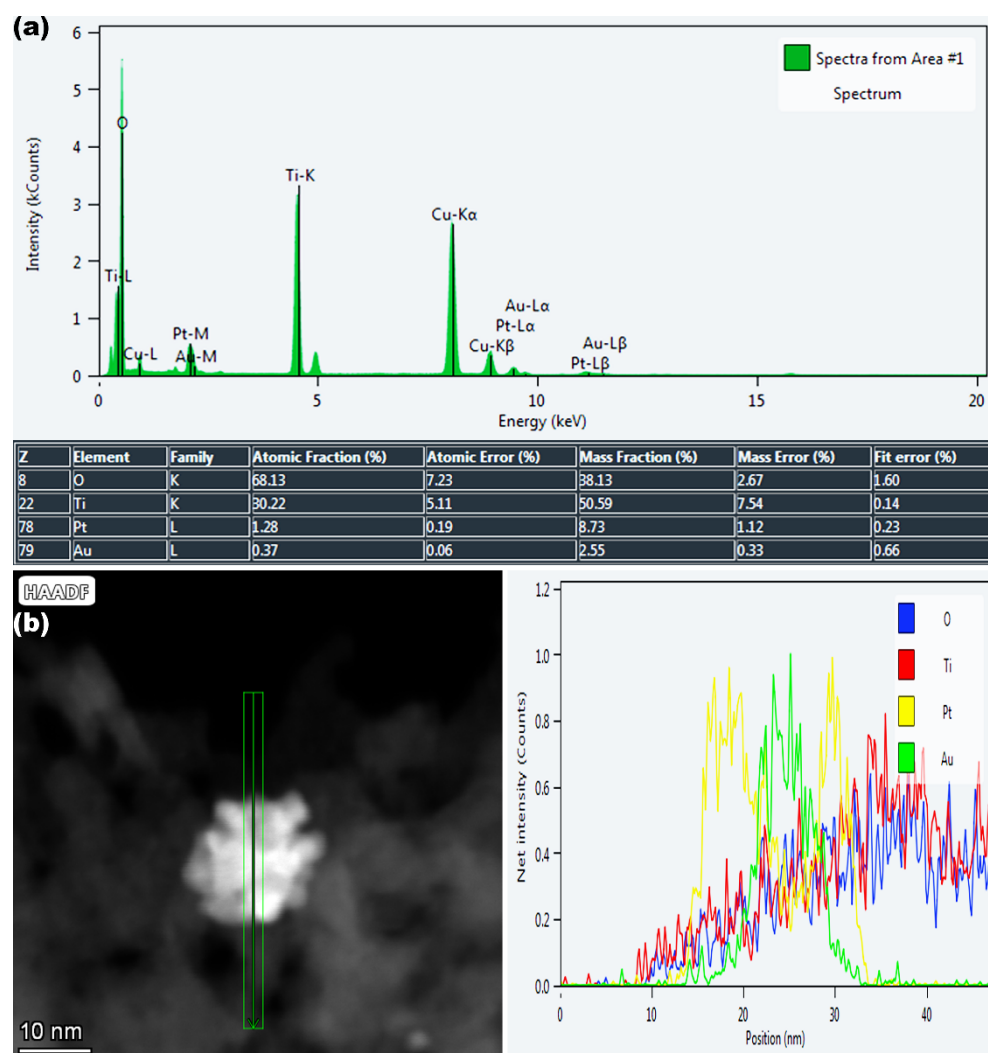


Figure S3. a) EDS spectrum and b) EDS line scan spectra of AuPt-TiO₂.

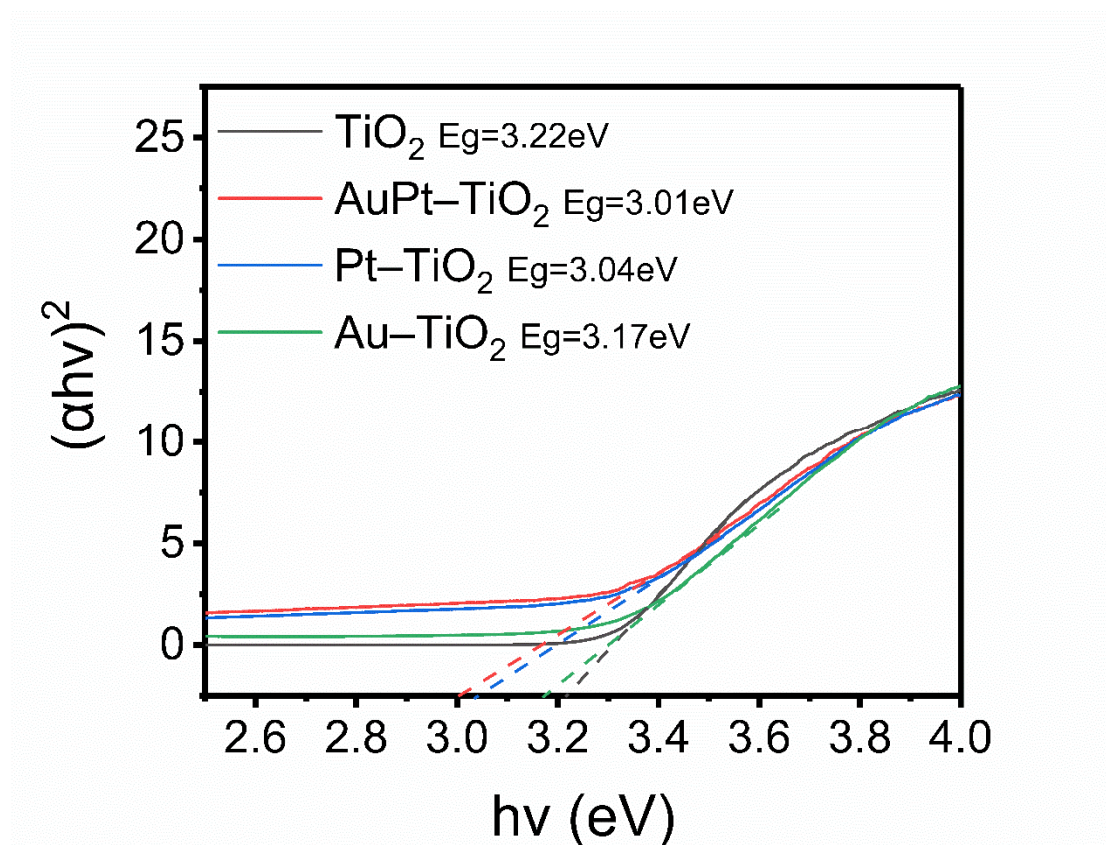


Figure S4 Tauc plots of TiO₂ MSs, AuPt- TiO₂, Pt-TiO₂ and Au-TiO₂.

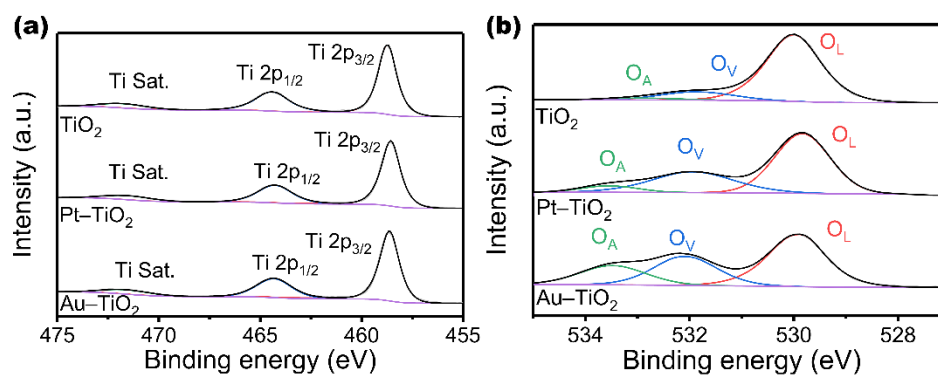


Figure S5. a) Ti 2p and b) O 1s XPS spectra of TiO₂, Pt- TiO₂ and Au-TiO₂.

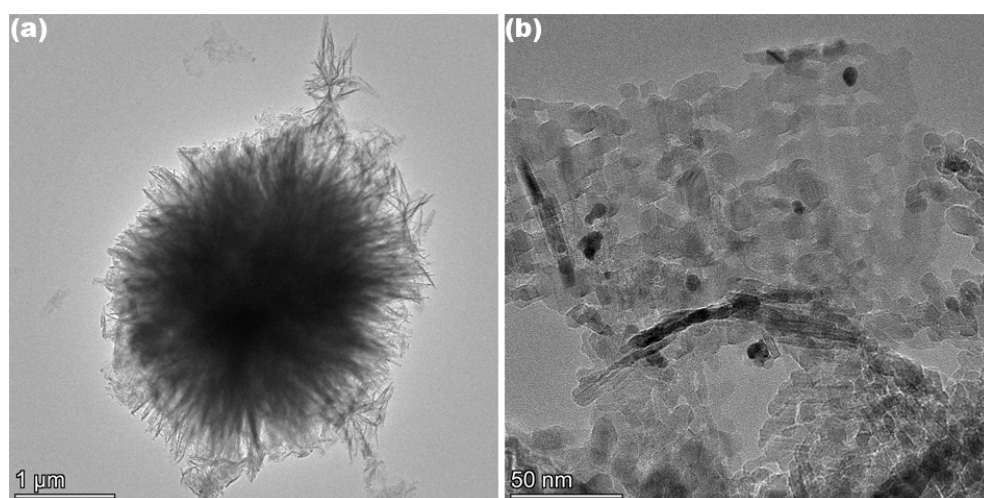


Figure S6. a, b)TEM, HRTEM images of AuPt-TiO₂ after 5 cycles stability test.

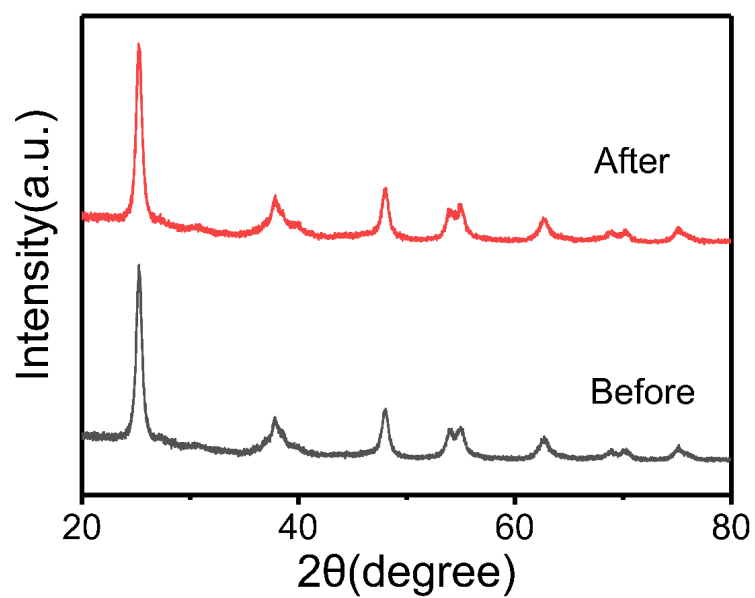


Figure S7. XRD pattern of AuPt-TiO₂ before and after 5 cycles stability test.

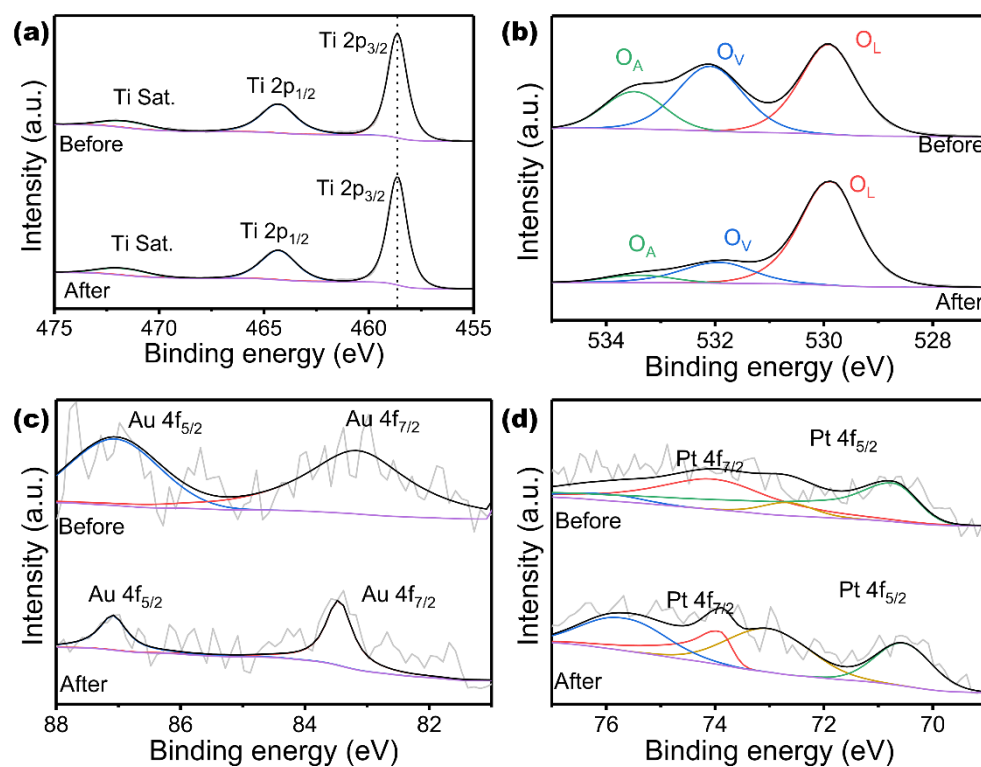


Figure S8. a) Ti 2p, b) O 1s, c) Au 4f and d) Pt 4f XPS spectra of AuPt-TiO₂ before and after 5 cycles stability test.

Table S1. Surface area and porosity of TiO₂ MSs and AuPt-TiO₂.

Samples	Surface Area (m ² /g)	Pore Volume (cm ³ /g)	Pore Size (nm)
TiO ₂ MSs	92.05	0.5488	11.9
AuPt-TiO ₂	104.5	0.7487	14.3