

Supplementary Material

Catalytic Hydrogen Evolution of NaBH₄ Hydrolysis by Cobalt Nanoparticles Supported on Bagasse-Derived Porous Carbon

Yiting Bu ^{1,2,†}, Jiayi Liu ^{1,†}, Hailiang Chu ¹, Sheng Wei ^{1,2}, Qingqing Yin ¹, Li Kang ¹, Xiaoshuang Luo ¹, Lixian Sun ^{1,2,*}, Fen Xu ^{1,*}, Pengru Huang ^{1,3}, Federico Rosei ⁴, Aleskey A. Pimerzin ⁵, Hans Juergen Seifert ⁶, Yong Du ⁷ and Jianchuan Wang ⁷

¹ Guangxi Key Laboratory of Information Materials and Guangxi Collaborative Innovation Center of Structure and Property for New Energy and Materials, School of Material Science & Engineering, Guilin University of Electronic Technology, Guilin 541004, China; ytb1172701255@163.com (Y.B.); jxliu2019@126.com (J.L.); chuhailiang@guet.edu.cn (H.C.); ws1801101003@163.com (S.W.); yqq15870030656@163.com (Q.Y.); kangli000hello@163.com (L.K.); shirley_lxs@126.com (X.L.); pengruhuang@guet.edu.cn (P.H.)

² School of Mechanical & Electrical Engineering, Guilin University of Electronic Technology, Guilin 541004, China

³ Department of Materials Science and Engineering, National University of Singapore, Singapore 117575, Singapore

⁴ Centre for Energy, Materials and Telecommunications, Institut National de la Recherche Scientifique, 1650 Boulevard Lionel-Boulet Varennes, Québec, QC J3X 1S2, Canada; rosei@emt.inrs.ca

⁵ Chemical Department, Samara State Technical University, 443100 Samara, Russia; al.pimerzin@gmail.com

⁶ Karlsruhe Institute of Technology, Institute for Applied Materials-Applied Materials Physics, Hermann-von-Helmholtz-Platz 1, 76344 Eggenstein-Leopoldshafen, Germany; hans.Seifert@kit.edu

⁷ State Key Laboratory of Powder Metallurgy, Central South University, Changsha 410083, China; yong-du@csu.edu.cn (Y.D.); jcw728@126.com (J.W.)

* Correspondence: sunlx@guet.edu.cn (L.S.); xufen@guet.edu.cn (F.X.)

† Yiting Bu and Jiayi Liu contributed equally.

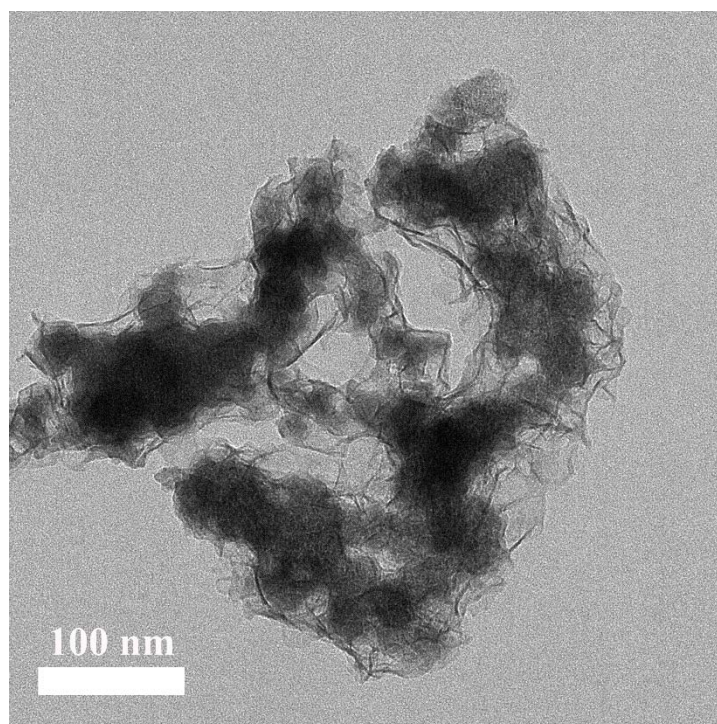


Figure S1. TEM image of Co@150PC.

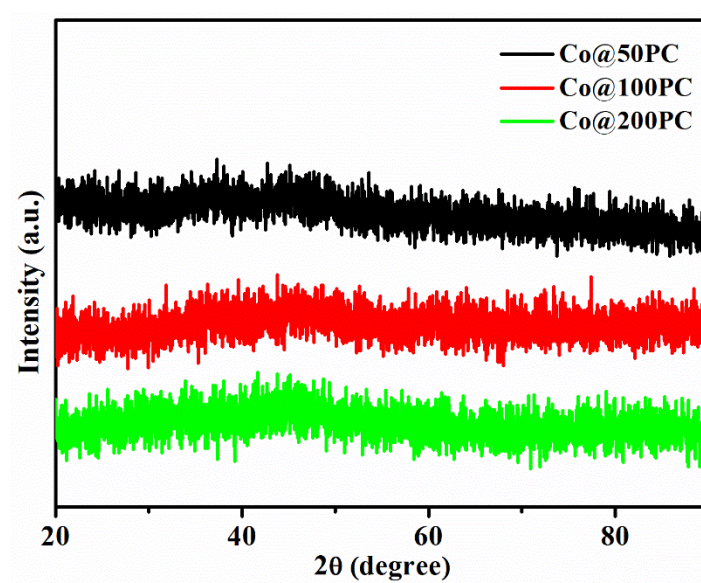


Figure S2. XRD patterns of Co@50PC, Co@100PC and Co@200PC.

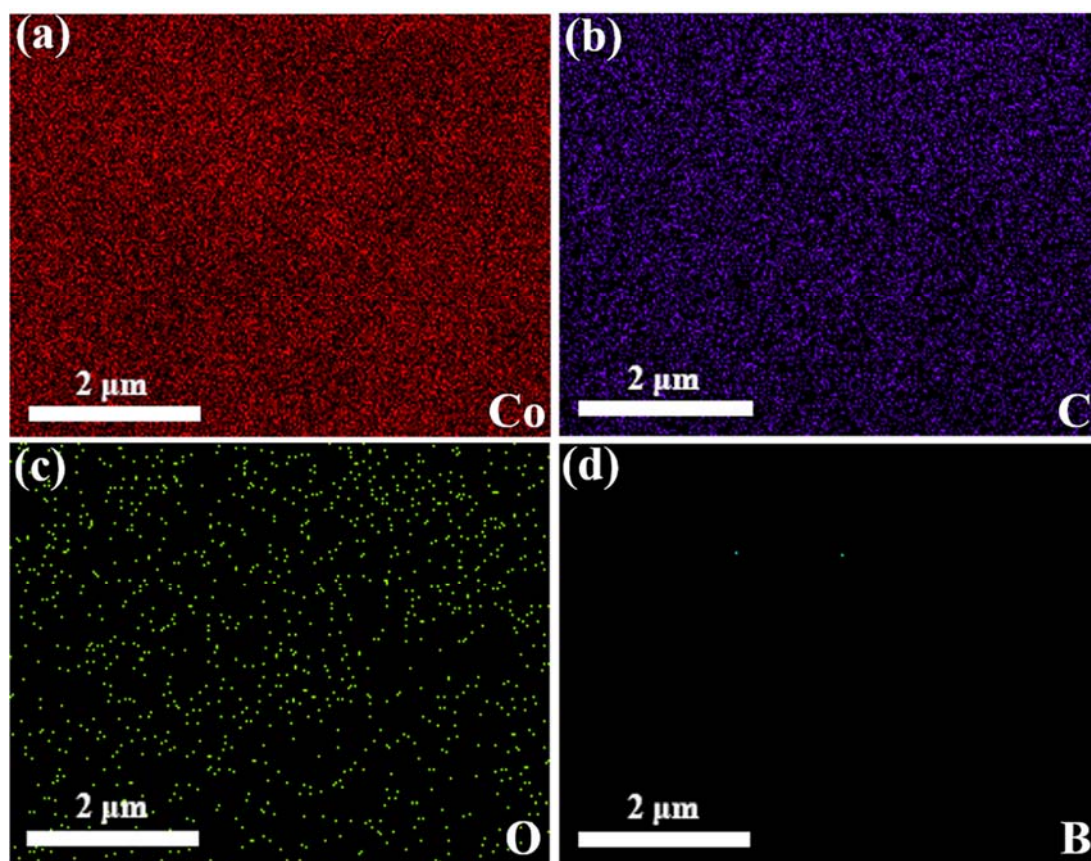


Figure S3. Corresponding EDS mapping Co@150PC (a–d).

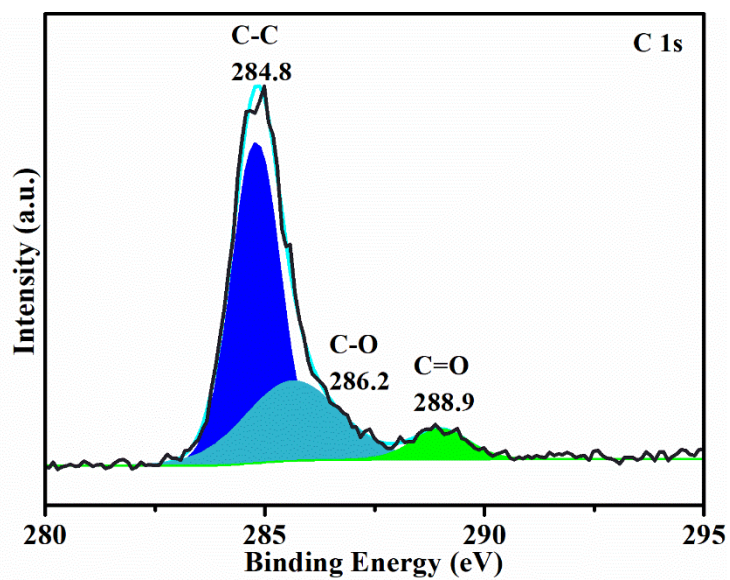


Figure S4. C 1s XPS spectrum of Co@150PC.

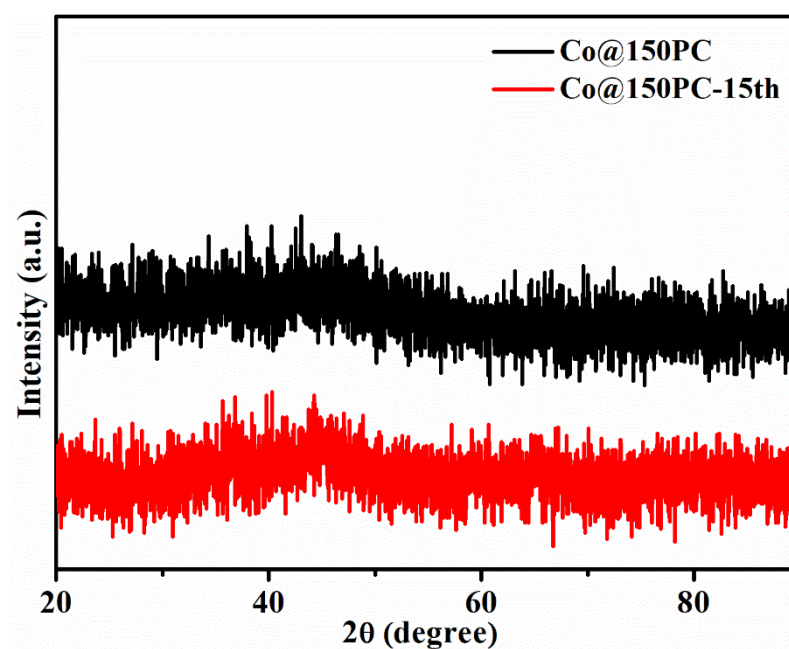


Figure S5. XRD patterns of Co@150PC and Co@150PC-15th b.