

Article

High Nanodiamond Content-PCL Composite for Tissue Engineering Scaffolds

Supplementary Materials

Kate Fox ^{1,*}, Rahul Ratwatte ¹, Marsilea A. Booth ¹, Hoai My Tran ^{2,3} and Phong A. Tran ^{2,3,*}

¹ Center for Additive Manufacturing, School of Engineering, RMIT University VIC 3000, Australia; rahul.ratwatte@unimelb.edu.au (R.R.); marsilea.harrison@rmit.edu.au (M.A.B.)

² Interface science and materials engineering group, School of Mechanical, Medical and Process Engineering, Queensland University of Technology (QUT), 2 George Street, Brisbane QLD 4000, Australia; hoaimy.tran@qut.edu.au

³ Institute of Health and Biomedical Innovation, Queensland University of Technology, Kelvin Grove QLD 4059, Australia

* Correspondence: kate.fox@rmit.edu.au (K.F.); phong.tran@qut.edu.au (P.A.T.)

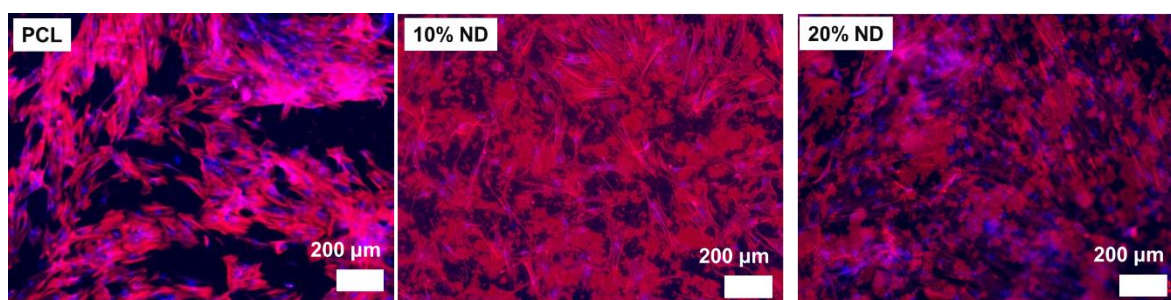


Figure S1. Representative images of cells cultured on PCL, ND-PCL 10% and ND-PCL 20% for 2 weeks. DAPI (blue) and rhodamine phalloidin (red) were used to stain cell nuclei and F-actin in cell cytoskeleton, respectively. Some background red particle fluorescence is observed in the 10% and 20% ND samples.