

PLANETARY HEALTH EUROPEAN HUB





Alliance Santé Planétaire France

France

The Alliance Santé Planétaire (France) is a NGO founded in January 2021. Today, it has more than 150 individual members and partners. Its objective is to promote Planetary Health and to communicate its issues to patients, professionals, citizens and legislators. The association also works to put into practice related concepts such as environmental health, EcoHealth and One Health. Its overall goal is to limit the impacts of human-induced environmental change on the health of all living things by preserving a fair, sustainable and healthy world. Its actions include awareness raising and education, mobilization of stakeholders, advocacy and support for the implementation of local planetary health projects.



Alexandre Robert

Co-founding Member

ARTIS & ARTIS-Micropia

The Netherlands

The Anthropocene as the new geological era presents us with urgent questions concerning our relationship with nature. The Royal Zoological Society Natura Artis Magistra (ARTIS), founded in 1838, seeks to answer such questions by renewing its outreach strategy to its public of 1.4 million visitors a year. This strategy includes educational tools for schools, programming in its zoological and botanical park, its planetarium, the Groote Museum and ARTIS-Micropia, the world's only microbe museum. One way to demonstrate the interconnectedness of humans with nature is through the world of microbes. Insight in the presence and activity of these invisible, but ubiquitous life forms becomes more and more important in times of overpopulation and scarcity, as microbes play a crucial role in all nutrient cycles. Their importance is not only evident for the ecosystems of our planet, but also for our health. The metabolic activity of microbes in our body forms an often neglected, but intrinsic factor of human physiology. Moreover, there is an accumulating amount of evidence that the lack of exposure to a diversity of microbes, associated with our modern lifestyle in urban areas, contributes to the current epidemic of chronic inflammatory diseases. ARTIS-Micropia discloses microbial life and brings awareness for its aforementioned importance to our health and our planet through its science platform and its thematic interactive exhibits with over 200 living microbial species.



Prof. Remco Kort

Microbiologist

Barcelona Institute for Global Health (ISGlobal)

Spain

ISGlobal's strategic plan is aligned with the UN's Sustainable Development Goals (SDGs) through different strategic actions. One of these strategies is Planetary Health. As part of the Severo Ochoa program, ISGlobal has initiated a series of actions to contribute developing a Planetary Health approach in global and local contexts. These actions have included research and translation, education and outreach. The main objectives of the Planetary Health activities at ISGlobal are: 1) Strengthen the network of Planetary Health in Europe and Internationally. 2) Contribute to develop an interdisciplinary and transdisciplinary research and innovation agenda for Planetary Health for e.g. identifying research priorities in Planetary Health through the HERA project, the development of a webinar series to Strengthen the Scope of research in Planetary Health in Europe, and the involvement of ISGlobal experts to The Lancet Countdown in Europe. 3) Promote interdisciplinary training in Planetary Health including the Inter-university Master Degree in Planetary Health (UOC-UPF-ISGlobal), an elective Planetary Health Course as part of the Master's in Public Health at Pompeu Fabra University (UPF) or the involvement in the Planetary Wellbeing initiative at UPF. 4) Establish local and international alliances in the field.



Josep M. Antó

Senior Research Professor
Emeritus Professor of Medicine at
Pompeu Fabra University (UPF)



Cristina O'Callaghan-Gordo

Researcher



Ariadna Moreno

*Project Manager, Planetary Health
Activities*

Club of Rome

Global

The convergence of climate, biodiversity, health, and social tipping points have led to a state of emergency. The Planetary Emergency workstream (“Impact Hub”) at the Club of Rome aims to provide a roadmap – in the form of the Planetary Emergency Plan – for key (short-term) policy levers to address cross-cutting, interconnected crises of climate change, biodiversity loss, health and wellbeing that supports the (long-term) path to change finance, exploration of new economic thinking and ultimately the emergence of new civilizations. If we succeed in reshaping our financial system, our economic model, and our communities through a systemic approach, we emerge from the Planetary Emergency. To support implementation of the proposed sectoral transition pathways, Club of Rome brings together more than 350 Partners from across the climate, biodiversity and health communities in the Planetary Emergency Partnership. The partnership provides one of the largest, unbranded civil society coordination platforms to help build for a successful ‘triple crown’ of the World Health Summit, CBD COP15 and COP27 summits in 2022.



Laura van der Zande

Planetary Emergency Program Manager

EuroHealthNet

European Region

EuroHealthNet is a not-for-profit partnership of over 60 organisations, institutes, and authorities across Europe working on public health, health promotion, disease prevention and wellbeing, and reducing inequalities. We work on policy, practice and research, and act as a voice for more health-determinant-based approaches at the EU level. Our involvement in Planetary Health issues was shaped by the INHERIT research project (2017-2019) that focused on modifying the way we live, move and consume to simultaneously benefit the environment, health and equity. We are currently involved in several EU co-funded projects that focus on sustainability and health, like FEAST (transforming food systems) and BlueAdapt (starting in Oct 2022), in policy and communication roles. We have also organised and participated in numerous workshops and events, for our membership, at EU level and internationally, to foster greater exchange and collaboration on the issues of climate change and planetary health. We are engaged in exploring and promoting the concept of an 'Economy of Well-being', to contribute to a 'new narrative' and vision for the future. We also take part in other alliances, like the Sustainable Food Coalition, WeAll, and the Global Health and Climate Change Alliance.



Ingrid Stegeman

Programme Manager

European Environment and Sustainable Development Advisory Councils Network (EEAC Network)

European Region

Members of the European network of national and regional advisory councils on climate change, the environment and sustainable development (EEAC Network) provide advice to their governments and parliaments on a variety of topics, including Planetary Health and adjacent concepts. Currently, councils work on questions like: what might a healthy relationship with nature look like? Or, how can we combine climate protection, adaptation to climate change and biodiversity conservation with health protection? In order to enrich the advice that advisory councils can give to their governments and parliaments, the EEAC Network provides an operational platform for knowledge exchange and knowledge building on Planetary Health. Last year, members of the EEAC Network collaborated to deepen the understanding of the concept of Planetary Health. This year, we continued our work on Planetary Health through knowledge building among advisory councils and also engaged with external partners in the European Hub.



Arnau Queralt Bassa

Chairman

Chairman since January 2015. Also Director of the Advisory Council for the Sustainable Development of Catalonia.



Michiel de Vries

Network Coordinator

European Public Health Association (EUPHA)

European Region

The European Public Health Association (EUPHA) is an umbrella organisation for public health associations in Europe. Our network of national associations of public health represents around 20'000 public health professionals. Our mission is to facilitate and activate a strong voice of the public health network by enhancing visibility of the evidence and by strengthening the capacity of public health professionals. EUPHA contributes to the preservation and improvement of public health in the European region through capacity and knowledge building. EUPHA is committed to creating a more inclusive Europe, narrowing all health inequalities among Europeans, by facilitating, activating, and disseminating strong evidence-based voices from the public health community and by strengthening the capacity of public health professionals to achieve evidence-based change. Environment and Health Section EUPHA is dedicated to the topics such as climate change, SDGs, environmental issues, as well as planetary health. EUPHA Conference this year will give an opportunity to advocate the importance of planetary health in a special workshop which will bring together experts interested in this topic. www.eupha.org



Marija Jevtic, MD PhD

*President, Environment and Health
Section*

Full professor, Faculty of Medicine
University of Novi Sad

European Society for Quality and Safety in Family Medicine Practice (EQuiP)

European Region

EQuiP, the European Society for Quality and Safety in Family Practice aims to promote and exchange knowledge and innovations in quality development and patient safety in European Family Medicine. EQuiP's mission is to promote and exchange good practice in education, training, and research in quality development in European primary health care through working with stakeholders. The national colleges and societies of family medicine in Europe send representatives to the EQuiP Council. EQuiP has a working group focussing on sustainable healthcare. www.equip.woncaeurope.org



Andrée Rochfort

President

Falling Walls Foundation

Germany

Falling Walls Engage is the global platform for Science Engagement. Our core vision is that a better understanding and public involvement in science can tackle global societal challenges through fact-based decision-making, global deliberation, and integration of diverse perspectives. Participation and community science contribute to enhanced trust in science, overall societal well-being, and changes in policy. The Falling Walls Engage Hubs aim to build a global community of practitioners and organizations and enable a global dialogue around key challenges through regional perspectives. This year, all events across the international Hub network are stirring up conversations on the topic of Planetary Health by exploring innovative research and practices and engaging at the intersection of health, the environment and engagement. Seeing the need to tackle planetary emergencies, we will develop our unique global community platform into an action platform. We aim to collect and spread the expertise on how to engage local communities, policymakers and researchers to benefit Planetary Health. We aim to embed local debates on science-based solutions, engage communities, activate scientists and policymakers, and jointly develop action for global change.



Anja Schoch

Head of Falling Walls Engage

Finnish Institute for Health and Welfare (THL)

Finland

The THL's Research programme on Safe and Health Promoting Environment generates research-based evidence to build and maintain safe and health promoting living environments under evolving circumstances including climate change and urbanisation. The programme aims to increase awareness of the population regarding environment and global phenomena-related health risks together with national and international collaborators. It also provides knowledge for policy makers on how to protect the population against various environment-related biological (microbes), chemical, physical (air pollution and noise) and social threats as well as on the effectiveness of different adaptation measures. THL manages several extensive research data resources from register studies and population-based surveys to sample collections of the THL Biobank. To optimize the scientific value and wide use of these resources, THL actively offers external investigators an opportunity to obtain access to THL data for various health and biomedical research purposes.



Jaana Halonen, PhD

Research Programme Director

Francis of Assisi Academy for Planetary Health

Germany

The Francis of Assisi Academy for Planetary Health is an interreligious think tank founded in 1995 as a contribution to the European Year of Nature Conservation with support of the Council of Europe. We implemented in 1995 one of the first sustainability projects in Europe, for the Catholic University of Eichstätt. In the first 10 years, until 2005, we had a project focused on Sustainable Europe. We developed the standard methodology (Local Sustainability Strategy Methodology) for the transformation of cities and communities. The academy is the initiator for the Vatican signing the UN-Climate Convention 2022. Our focus areas in Planetary Health are: 1) Since 2017 we create synergies between the Laudato Si Movement, world religions, and Planetary Health. As of today, for example, there is a large Healthy Planet - Health People campaign of the Laudato Si Movement with over 100,000 signatories - supported by > 400 catholic organizations. Planetary Health is increasingly becoming a relevant approach for the universal church e.g. for the Pontifical Academy of Sciences. 2) Our vision is to create around 10,000 graduates of a Planetary Health program within the Catholic university system (with > 500 universities) by 2030 and the involvement of the Catholic health system (which is one of the biggest in the world) as a catalyst for Planetary Health. To realize this, an initiative was launched, for example, to establish a pilot faculty for Planetary Health within a Catholic University. 3) Development of innovative financing instruments of the world religions (with > 1000 MW power plants) for education and Planetary Health operations until 2030.



Ralf Klemens Stappen, MA

Director

German Alliance on Climate Change and Health (KLUG)

Germany

Climate change is the greatest threat to health in this century. With the knowledge of climate protection also being the greatest opportunity for health, the German Alliance for Climate Change and Health (KLUG) was founded in 2017 as a non-profit organization. KLUG is a network of individuals, organizations and associations from the German health sector with about 400 active members and more than 20 member organizations. The network organization exemplifies the far-reaching consequences the climate crisis has on health and empowers health professionals to become active actors of the necessary transformation of society as a whole. That succeeds by introducing the climate change and health-nexus into education and training of health professions, developing solutions to reduce the carbon footprint and the resource consumption of healthcare facilities, addressing political decision-makers, and by accompanying these activities with active public outreach. In order to develop policy solutions and co-benefit strategies, KLUG works in various constellations and innovative formats on different transformational projects (Health For Future movement with more than 70 local groups and the Planetary Health Academy for educational programmes). With the Centre for Planetary Health Policy (CPHP) KLUG established an independent think tank in Berlin in 2022. CPHP aims to stimulate and support socio-political debates on health within planetary boundaries. Together with health actors, policy-makers, and researchers, we develop options and policy recommendations for action for the health system and beyond.



Dr. Martin Herrman
Chair of the Board



Maike Voss
Managing Director, CPHP



Dr. Eva-Maria Schwienhorst-Stich, MD, MScIH
University Hospital Würzburg

Green Team Education Radboudumc

The Netherlands

The Green Team Education at Radboud University Medical Centre (Radboudumc) focuses on implementing Planetary Health education in the bio(medical) curricula of Radboud University and Radboudumc in Nijmegen. One of the pillars we have been working on is setting up and realising an elective course. This elective 'Planetary Health' was first launched as pilot last academic year, and with great success. In the coming academic year 2022/2023, the elective will be available for credits at Radboud University. In addition, we are having conversations with programme committees, coordinators and directors to integrate Planetary Health curriculum broadly, so that every upcoming health professional learns about this topic and can prepare for a field in which climate change and related factors affect human health. As a result, from the current academic year, undergraduate and graduate (bio)medical students will be introduced to the topic. In the coming period, we will focus on expanding, developing and evaluating Planetary Health education.



Aimée de Croon

Student Member

MSc Student Biomedical Sciences



Maarten Manten

Student Member

Assistant Elective Planetary Health, MSc Medicine

Health Care Without Harm (HCWH) Europe

European Region

Health Care Without Harm Europe works to create a sustainable healthcare sector. One that does no harm to patients or our planet. One that acts as a catalyst, inspiring action right across society to protect human health and the environment. One that drives change in communities, so people can live more healthily on a healthier planet. The relationship between the planet's health and human health is especially relevant to the healthcare sector - we cannot have healthy people on a sick planet. The sector has a unique and urgent role to play, not only because of its size and environmental impact - but also because of its role and position in society. Healthcare practitioners are trusted, respected and listened to. They are perfectly placed to both inspire and demand change.



Andreea Zotinca

Circular Healthcare Project Officer

Het Groene Brein

The Netherlands

Het Groene Brein focuses on accelerating the sustainable, circular economy. Within this, we intend to pay more attention to nature, climate and biodiversity. In recent years, Het Groene Brein has built up a solid network of approximately 170 scientists, from various universities and colleges from varied fields of expertise. All these people are connected to our organization on their own behalf. The expertise of these scientists and lecturers is applied in order to unlock (scientific) knowledge and to connect theory to practice. By doing so, we often use an interdisciplinary approach. This generally works very well. Our core business is therefore acting as a broker or matchmaker and to instigate positive change. In addition, we also have many connections with various nature and environmental organizations. One of the focus points of Het Groene Brein is climate justice. For example, together with the Young Climate Movement (JKB) and scientists from Het Groene Brein, we made an activist statement about the circular economy & justice. JKB and Het Groene Brein subsequently prepared two position papers. Another project our organization works on, is what we call: the Community of Science: Social Circular. Realizing a circular economy requires us to imagine the new and to organize it together. The circular economy is therefore also a social challenge. Social Circular connects scientists in the development and application of knowledge about the social changes necessary to realize a circular economy.



Sara Muller

Project Manager

Individual Representation



Valesca Venhof

Medical Doctor, Public Health (Environment and Health)

I'm a Planetary Health "believer," and on a personal base, dived into the academic field of Planetary Health four years ago. I followed some courses (Yale, KLUG, PHA, WLPH) on the topic and became a member of the Planetary Health Alliance. I'm also a "Women Leader for Planetary Health (WLPH)". Since recently, I've been active in educating medical students (Groningen, the Netherlands) on Planetary Health. I have almost completed a Master's in Public Health (Environment and Health stream) at the London School of Hygiene and Tropical Medicine (LSHTM). Furthermore, I'm a Ph.D candidate in Planetary Health at Maastricht University. Research topics concern: Indigenous perspectives on climate change, environmental distress, mental health effects of climate change, particularly on youth.

Institute of Atmospheric Sciences and Climate of the National Research Council of Italy (CNR-ISAC)

Italy

The Institute of Atmospheric Sciences and Climate of the National Research Council of Italy (CNR-ISAC) promotes and develops an integrated scientific understanding of the atmosphere, the ocean, and their processes, through a multidisciplinary approach. One of the major research topics of CNR-ISAC is the study of the impact of natural and anthropogenic events on the human environment, health, and cultural heritage. This is the context where CNR-ISAC works on the development of new evidence-based methodologies exploring the impact on planetary health of the degradation of the atmosphere, with a one-health approach. The focus is on the study of the interactions between the degradation of the atmosphere and all the planetary boundaries relevant to planetary health, including aerosols, pollutants, air quality, climate change, and biodiversity, in hot spots such as urban areas. Efforts are addressed toward the development of new atmospheric-relevant metrics that are planetary in scope to monitor planetary health.



Francesca Costabile

Senior Research Scientist; Strategic area coordinator for "Impact on Environment, Cultural Heritage and Health"

Irish College of General Practitioners (ICGP)

Ireland

The Irish College of General Practitioners (ICGP) is the professional education and training body for family doctors in Ireland. The ICGP Sustainability working group produced an infographic to communicate the multiple roles of primary care in sustainable healthcare, promoting sustainable lifestyles, and addressing the carbon footprint of healthcare. A small country like Ireland (5m) has 23m consultations per annum with the public: each has opportunities for supporting family doctors to enhance patient care with sustainable healthcare activities. www.icgp.ie



Andrée Rochfort

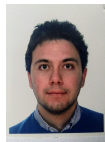
Director of Quality Improvement

Staff member 22 years and founding
member of ICGP Sustainability Working
Group

Italian Institute for Planetary Health (IIPH)

Italy

The Italian Institute for Planetary Health (IIPH) is an Institute born in 2019 from the collaboration between the Istituto di Ricerche Farmacologiche Mario Negri IRCCS of Milan, and the Università Cattolica del Sacro Cuore of Rome. The Institute has a board of experts with extensive experience in Planetary Health, supported in all activities by passionate and motivated young public health physicians. The aim of IIPH is to improve knowledge in the field of Planetary Health, through scientific research on the effects of climate change on human health, the ability to create resilient cities and structures that adapt to the effects of climate change, and the relationship between healthy and sustainable food. In addition, IIPH promotes Planetary Health training and education activities to disseminate its research findings to all stakeholders, from policymakers to professionals with diverse backgrounds and citizens.



Dr. Leonardo Villani
Scientific Coordinator

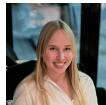


Dr. Chiara Cadeddu
Scientific Coordinator

Lahti University Campus

Finland

Lahti University Campus is responsible for supporting research and higher education activities in Nature Step to Health, a 10-year programme based on planetary health that aims for a systemic transformation in Lahti region, Finland, and provide best practices to be implemented internationally. The programme is coordinated by the Päijät-Häme Joint Authority for Health and Wellbeing, the City of Lahti and the Lahti University Campus, that represents the University of Helsinki and LUT University. In 2022, we started a recurring summer school on planetary health. In addition, we are working on other related transdisciplinary educational programmes and formats. There are over 30 research projects in the region that link to planetary health, including Biodiversity Interventions for Wellbeing BIWE, Biodiversity Respectful Leadership BIODIFUL and a project on novel guidance that maternity clinics provide. Lahti University Campus fosters developing more projects through seed funding, assistance, workshops and events.



Marju Prass

Specialist, Coordination Unit

Maastricht University

The Netherlands

The Earth's natural systems determine the safe environmental boundaries within which humanity and other life on earth can thrive. The emphasis of the research cluster Planetary Health, at Maastricht University (Faculty of Science and Engineering), therefore lies on a systems-based approach to deepen the understanding of the complexity of the relation between earth systems and human dynamics, and to support systems-based policies and strategies for planetary health. The problem-oriented research programs are (but not limited to): climate change, biodiversity loss and its global and regional impacts on the health and food system



Pim Martens

*Professor of Planetary Health, Campus
Venlo*

Medical Faculty of the University of Basel

Switzerland

Sustainability is an integral part of the University of Basel's strategy. As the medical faculty, we want to make an active and substantial contribution to climate protection and to sustainable development. Our greatest potential for impact lies in education. As future health professionals, our medical students will be greatly affected by the impacts of environmental degradation on human health. It is critical that our medical curriculum reflects those health threats. Together with faculty members, students and experts in the field, we developed a plan to incorporate Planetary Health as a theme throughout the medical curriculum. The aim is to prepare our students to address the impacts of human-caused environmental changes on patients' health, and to understand and mitigate the environmental impact of clinical care. The implementation starts in the upcoming fall semester. Furthermore, we promote sustainable practices at our faculty and engage in the interprofessional community of Swiss medical faculties to promote Planetary Health.



Francine Müller

Sustainability Project Coordinator

Munich Science Communication Lab (MSCL)

Germany

The Munich Science Communication Lab (MSCL) is a non-profit, joint initiative of scientists and science communicators that aims at bringing together research and practice of science communication. Our current research aims at understanding public communication about planetary health. The critical area of planetary health, encompassing the relationships between ecological and human health, was chosen for its transdisciplinarity and complexity, as well as for its relation to the current crises of biodiversity loss, climate change, and pandemics. Some of our current initiatives include the bi-monthly MSCL Colloquium - where we feature experts, scholars, and professionals to discuss interdisciplinary issues on science communication and planetary health. The aim is to have an open space for academic thought and reflection on this topic for the community, students, and practitioners; and the MSCL call for experiments on co-creating communication on planetary health related to food and food systems - where seven interdisciplinary groups are being funded and supported to carry out innovative experiments to be evaluated and analyzed.



Bernhard Goodwin

Executive Director

National Health Care Institute (Zorginstituut Nederland)

The Netherlands

The Dutch National Health Care Institute (Zorginstituut Nederland) is an independent governmental body. We advise the Minister of health on the standard package of insured health care and promote the quality, accessibility, and affordability of health care. Through our activities on appropriate care (Passende zorg), we focus on how to improve the health care system from both an individual/patient and a societal point of view. We focus on health disparities, ecological crises and the environmental impact from health care, increasing health care costs, changing demographics with an aging population and health care personnel shortages. We initiate and support research to increase knowledge on these topics and to improve (our) policies. In 2021, we released our renewed assessment framework for health care quality guidelines and included a criterion on minimizing financial, social, and environmental impact of health care interventions. We plan on incorporating environmental impact in all our policy instruments in the coming years. www.zorginstituutnederland.nl



Pieter ten Have, MD

Data scientist



Hans C. Ossebaard

Advisor in sustainable healthcare innovation; Lecturer in Sustainable Health and Healthcare at Athena Institute; Science Faculty, Vrije Universiteit Amsterdam



Pauline de Heer

Strategic Advisor, Agenda-Setting

Open University of Catalonia (UOC)

Spain

The Open University of Catalonia (UOC), together with the Pompeu Fabra University (UPF) and the Barcelona Institute for Global Health (ISGlobal), offers a master's degree (MSc) in Planetary Health. This official inter-university MSc aims to provide interdisciplinary and transdisciplinary training online for professionals from various knowledge areas, so they will be able to analyze the risks that the global environmental and climate crisis poses for human health, assess its possible impact and propose solutions for adaptation and mitigation. UOC is committed to understanding and addressing global environmental change and its impacts on health and promoting the 2030 Agenda. UOC is leading the team of the International Association of Universities (IAU) working to foster higher education's understanding and use of the SDG 3. The adherence of the UOC to the Planetary Health Alliance is one more example of the UOC's institutional commitment to address the global environmental challenges.



Cristina O'Callaghan-Gordo

*Professor in the Health Sciences
Department*

Päijät-Häme Regional Joint Authority for Health and Wellbeing (Päijät-Sote)

Finland

The Päijät-Häme Regional Joint Authority for Health and Wellbeing (Päijät-Sote) organizes health, social and rescue services and is governed by public law that exercises autonomy within the area. The highest decision-making body in Päijät-Sote is a county council elected by popular vote and decides on a more detailed organizational structure. Päijät-Sote covers about 220,000 persons and has about 150 service points and about 8,000 employees. Päijät-Sote leads and implements the NatureStep to Health programme - Lahti Regional Health and Environment Programme 2022-2032. The programme integrates planetary health and environmental goals of the Päijät-Häme region and is coordinated by the Päijät-Sote, City of Lahti and Lahti University Campus. The aim of the programme is to find new ways and perspectives to prevent non-communicable diseases and to promote health and wellbeing while reducing the rate of biodiversity loss and climate change. The general goals are divided into four sections: healthy and sustainable nutrition, active mobility and physical activity, healthy living environment, and connection to nature. Experts representing the stakeholders interconnect with each other to innovate new ideas to achieve the goals of the programme. The programme is implemented by several collaborating stakeholders and consists of multiple cross-sectoral projects and smaller actions and events. The impact of the programme is monitored using statistical data, surveys, questionnaires, and multidisciplinary studies and evaluated by economic data and overall feedback. The programme attempts to find healthy, socially equal, and environmentally sustainable practices that support us to make responsible lifestyle choices. To accomplish this, cooperation between health and environmental actors in education, research and communication is essential. www.paijat-sote.fi



Riitta-Maija Hämäläinen PhD, MPH, MSc

Manager for Sustainable Development

Planetary Health Alliance

Global

The Planetary Health Alliance is a growing consortium of over 320 universities, non-governmental organizations, research institutes, and government entities from over 60 countries around the world committed to understanding and addressing the impacts of global environmental change on human health and wellbeing. The PHA supports the dissemination of new research, the development and curation of foundational education materials, and the bringing together of communities of practice around the world. It also helps to integrate planetary health into the global health and human development communities and mainstream the field's new insights and frameworks into the domains of policymaking, the private sector, and the public. It seeks to mobilize the global health and human development communities, private sector, and civil society to recognize that the Earth Crisis represents an urgent humanitarian crisis and to build an activated global constituency committed to rapid structural shifts in how we live in order to reduce our ecological footprint and secure a livable future for humanity and the rest of life on Earth. www.planetaryhealthalliance.org



Samuel Myers, MD, MPH

Director

Principal Research Scientist at the
Harvard T.H. Chan School of Public
Health



Jeremy Pivor, MS

Senior Program Coordinator

Planetary Health Hub NL

The Netherlands

The Planetary Health Hub NL is a Dutch initiative by a group of health care professionals striving to protect the near future and all living beings on behalf of all children and coming generations. We want to accelerate the crucial transition to a sustainable and healthy society and health care sector, and increase the resilience of our society to be able to deal with the increasing number and intensity of crises our planet is facing. Through dialogue and advocacy we hope to inspire health care professionals and policy makers to join our school of thought and help save all we can. Our work to date has been on advancing climate, health, and equity in all policies, especially health policies, and promoting the Planetary Health school of thought in health care education (the medical curriculum and nurses training). We cooperate with climate-related initiatives, and contribute to health management conferences. www.planetaryhealthhub.nl



Pauline de Heer

Hub Member

Strategic Advisor, Agenda-Setting:
National Health Care Institute



Jorieke van der Stelt

Hub Member

General Practitioner, Global Health Doctor
& Planetary Health Advocate



Annemarie Bergsma, RN

Hub Member

Lecturer in Nursing

Planetary Health Hub NL, continued



Godelieve van Heteren, MD

Hub Member

Senior International Consultant: Health,
Governance and PBF



Nynke Postma

Hub Member

Anesthesiologist, Intensivist, Planetary
Health Advocate



Joyce Browne, MD, PhD

Hub Member

Assistant Professor, Global Health &
Epidemiology, UMC Utrecht



Jopke Janmaat

Hub Member



Arte Groenewegen

Hub Member

Potsdam Institute for Climate Impact Research (PIK)

Germany

The Potsdam Institute for Climate Impact Research (PIK) is an interdisciplinary research institute with over 400 scientists working on advancing the scientific frontier for global sustainability. Within PIK, the Climate Change and Health (CCH) working group links climate and human health research, guided by the transdisciplinary concept of Planetary Health. The CCH working group researches the impacts of climate change on health and nutrition and evaluates solutions towards healthy food systems. Projects include examining the impact of a homestead food production intervention on women's and children's health and nutrition in Bangladesh, linking agroforestry projects in Africa with human health through engagement with local to global stakeholders, examining the impacts of rising temperatures on pregnancy outcomes, and evaluating the feasibility of implementing the Planetary Health Diet in German healthcare institutions. Members are also involved in writing a report on Planetary Health, chaired by the German Advisory Council on Global Change.



Dr. Nathalie Lambrecht

Postdoctoral Researcher



Dr. med. Lisa Pörtner

Postdoctoral Researcher

Royal Netherlands Academy of Arts and Sciences (KNAW)

The Netherlands

Royal Netherlands Academy of Arts and Sciences (KNAW) is both a learned society and an organization of national research institutes. The Academy advises the Dutch Government on matters related to scientific pursuit. In 2021 the Academy board established a Planetary Health Committee with the remit to (1) make an inventory of the state of scientific knowledge in the field of planetary health and to list the main knowledge gaps, and (2) formulate an agenda for knowledge development for this field in the Netherlands. The advisory report will be published early 2023. The Planetary Health Committee is chaired by Johan Mackenbach, professor at Erasmus MC. Committee Members are: Vera Araujo Soares (University of Twente), Lisa Becking (Wageningen University), Frank Biermann (Utrecht University), Tatiana Filatova (Delft University of Technology), Ron Fouchier (Erasmus MC), Louise Fresco (Wageningen University), Pim Martens (Maastricht University), Jan Luiten van Zanden (Utrecht University)



Hanneke van Doorn

Senior Policy Advisor

SciTech DiploHub, the Barcelona Science and Technology Diplomacy Hub

Spain

SciTech DiploHub, the Barcelona Science and Technology Diplomacy Hub, is a pioneering international think-and-do tank with the mandate to elevate the role of science, technology, and cities in tackling the most pressing challenges that humanity and our planet are facing. National, subnational, and local governments worldwide, as well as international organizations, have trusted SciTech DiploHub to deploy custom-made research, assess new policies, provide scientific advice, and design capacity building programs that articulate science diplomacy as a transdisciplinary and multistakeholder tool for sustainable development, global health, and global environmental change. With a results-driven approach based on knowledge creation and practical social impact, engaging with policymakers and exploring collaborative solutions to advance planetary health values, SciTech DiploHub leads and takes part in multiple global networks and platforms, such as the International Science Council (ISC), the United Nations' Sustainable Development Solutions Network (UNSDSN), the United Nations' Global Compact, the Intergovernmental Science-Policy Platform on Biodiversity and Ecosystem Services (IPBES), the World Science Forum (WSF), the United Nations' Science-Policy-Business Forum on the Environment, the International Network for Government Science Advice (INGSA), and Cities for Global Health.



Alexis Roig

CEO

Barcelona's Chief Science and Tech
Envoy

Scuola Superiore Sant'Anna

Italy

Sant'Anna School of Advanced Studies (Pisa, Italy) is a public university institute - with special autonomy - working in the field of applied sciences: Medicine, Agricultural Sciences and Plant Biotechnology, Economics and Management, Law, Political Sciences, and Industrial and Information Engineering. Sant'Anna School of Advanced Studies, after obtaining accreditation as an observer institution under the United Nations Convention on Climate Change (UNFCCC), in 2021 participated as an accredited organization in COP26 of the United Nations. In 2019, our Institution was the first to introduce a course in Climate and Environmental Medicine aimed at medical students in Italy. Moreover, it promotes multidisciplinary research programs to develop new strategies for protecting planetary health. In particular, translational studies on the effects of climatic and environmental factors on perioperative outcomes are underway. Various outreach activities on planetary health aimed at the lay public are organized at events such as European Research Night.



Vincenzo Lionetti

*Associate Professor of Anesthesiology,
Head, Unit of Translational Critical Care
Medicine*

Université Paris Cité

France

Université Paris Cité includes a global research and training hub for planetary health implemented by the Centre Virchow-Villermé, which has developed a wide expertise on the health impacts of climate change with an interdisciplinary approach. The Centre Virchow-Villermé has also pioneered different pedagogical innovations, and in particular the development of MOOCs on global health. In particular, we produced three MOOCs on climate change and health. On top of these, we produced several MOOCs on some epidemics that will be exacerbated by global warming, such as Zika and other infectious diseases. Over the last few years, the Centre has positioned itself as a key international hub for the study of the health dimensions of global challenges. Through this expertise and position, the Center can effectively bring together experts from government as well as from international and non-governmental organizations, but also scientists and students. The Centre is highly engaged in political debates on climate change, such as the organization of side-events every year at the UN Climate Conference (COP) to promote health as an important argument in the negotiations.



Dr. Anneliese Depoux

Director of the Centre Virchow-Villermé

University Medical Center Utrecht

The Netherlands

The University Medical Center Utrecht (UMC Utrecht) is one of the eight academic hospitals in the Netherlands. UMC Utrecht aims to contribute to a healthy life and a healthy society, not only for ourselves, but also for all future generations, by providing care, education and research that is future-proof, both ecologically and economically as well as socially. Examples of our work are the Exposome research hub, our Planetary Health educational vision and interdisciplinary courses, the ePlanet consortium (international collaboration to create educational platform on planetary health for the medical curriculum), our close collaboration with other science institutes in the country on this subject (www.ewuu.nl) and our research work with partners in low- and middle income countries. <https://www.umcutrecht.nl/en/sustainability>



Peter J. Blankestijn

*Nephrologist, Department of Nephrology
and Hypertension*

Chairman: ePlanet consortium



Joyce Browne, MD PhD

*Assistant Professor, Global Health &
Epidemiology*



Camilla Alay Llamas, MD, MPH

University of Exeter

United Kingdom

The new University of Exeter 2030 strategy firmly prioritizes the use of our education and research to create a sustainable, healthy and socially just future. In order to achieve this we will build on our strong interdisciplinary culture to:

- 1) Lead meaningful action against the climate emergency and ecological crisis.
- 2) Make key breakthroughs to transform human health and wellbeing.
- 3) Lead the progress towards creating a fair, socially just and inclusive society.

In addition to environment and human health concepts being embedded within our core five year integrated undergraduate Medicine curriculum, all BMBS students at Exeter undertake a Global and Planetary Health Special Study Unit in Year 2. They select from an authentic research inspired catalogue of study options and then undertake a three week period of expert facilitated personal study focussing on an area of individual interest. Assessment is via a Pecha Kucha style oral presentation delivered to a small group of their peers, further diversifying their knowledge acquisition in this domain.



Professor Ian Fussell
BMedSci(Hons) BMBS MRCGP
PGCE PFHEA

*Associate Pro Vice Chancellor Education,
Faculty of Health and Life Sciences,
University of Exeter*



Cecilia Manosa Nyblon

*Education and Skills Partnership
Development Manager, Faculty of Health
and Life Sciences, University of Exeter*

Wellbeing Economy Alliance Nederland (WEAll Nederland)

The Netherlands

WEAll Nederland is the Dutch hub of the international network of the Wellbeing Economy Alliance. WEAll is a global collaboration of organizations, alliances, movements and individuals working towards a wellbeing economy that delivers human and ecological wellbeing. Many of the big issues and challenges of our time regarding our planetary health, whether it be the covid-pandemic, the energy crisis, climate change or the increasing wealth gap, have a common cause where we can do something about: they arise from the way we have shaped our economy. WEAll Nederland drives the transition to a new economic system in the Netherlands, and beyond, by sharing knowledge and stories about a new (economic) future, making organizations and initiatives visible, their experience and tools accessible, facilitating collaboration between networks and organizations, making connections and/or entering into partnerships with other organizations and networks.



Olette Bollen

Country Lead

Aimée de Croon	13	Jorieke van der Stelt	28
Alexandre Robert	1	Josep M. Antó	3
Alexis Roig	32	Joyce Browne, MD PhD	29, 35
Andrée Rochfort	8, 18	Laura van der Zande	4
Andreea Zotinca	14	Leonardo Villani	19
Anja Schoch	9	Lisa Pörtner	30
Anneliese Depoux	34	Maarten Manten	13
Annemarie Bergsma, RN	28	Maike Voss	12
Ariadna Moreno	3	Marija Jevtic, MD PhD	7
Arnau Queralt Bassa	6	Marju Prass	20
Arte Groenewegen	29	Martin Herrman	12
Bernhard Goodwin	23	Michiel de Vries	6
Camilla Alay Llamas, MD, MPH	35	Nathalie Lambrecht	30
Cecilia Manosa Nyblon	36	Nynke Postma	29
Chiara Cadeddu	19	Olette Bollen	37
Cristina		Pauline de Heer	24, 28
O'Callaghan-Gordo	3, 25	Peter J. Blankestijn	35
Eva-Maria		Pieter ten Have, MD	24
Schwienhorst-Stich	12	Pim Martens	21
Francesca Costabile	17	Ralf Klemens Stappen, MA	11
Francine Müller	22	Remco Kort	2
Godelieve van Heteren, MD	29	Riitta-Maija Hämäläinen PhD	26
Hanneke van Doorn	31	Samuel Myers, MD, MPH	27
Hans C. Ossebaard	24	Sara Muller	15
Ian Fussell	36	Valesca Venhof	16
Ingrid Stegeman	5	Vincenzo Lionetti	33
Jaana Halonen, PhD	10		
Jeremy Pivor, MS	27		
Jopke Janmaat	29		