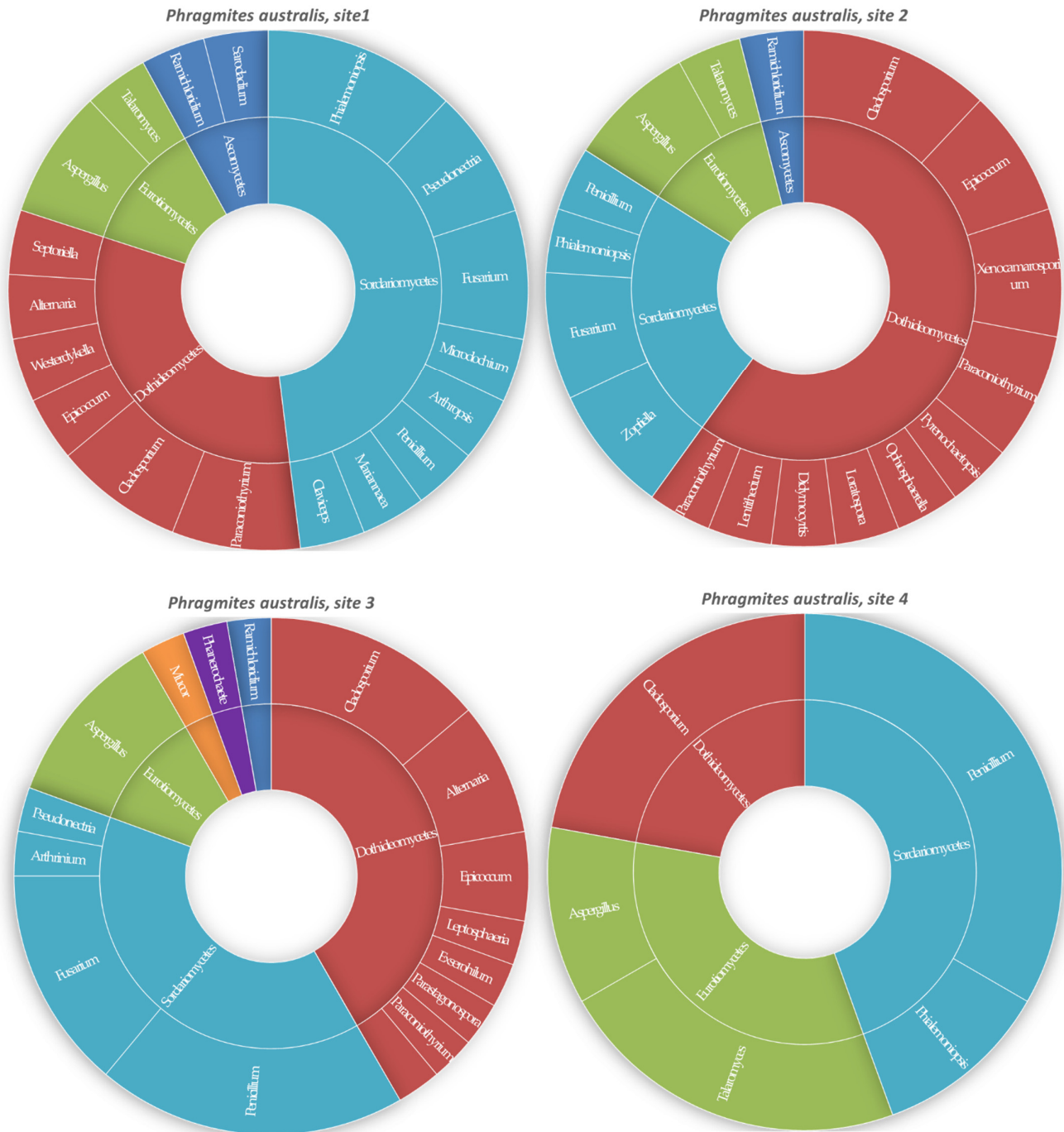
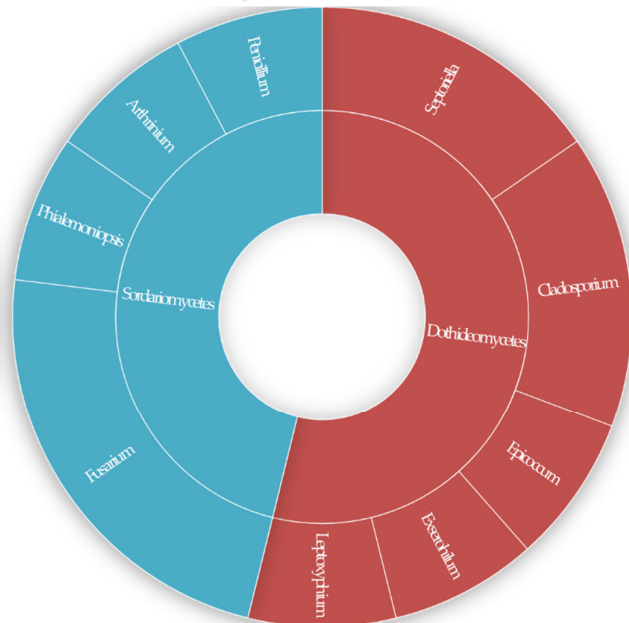
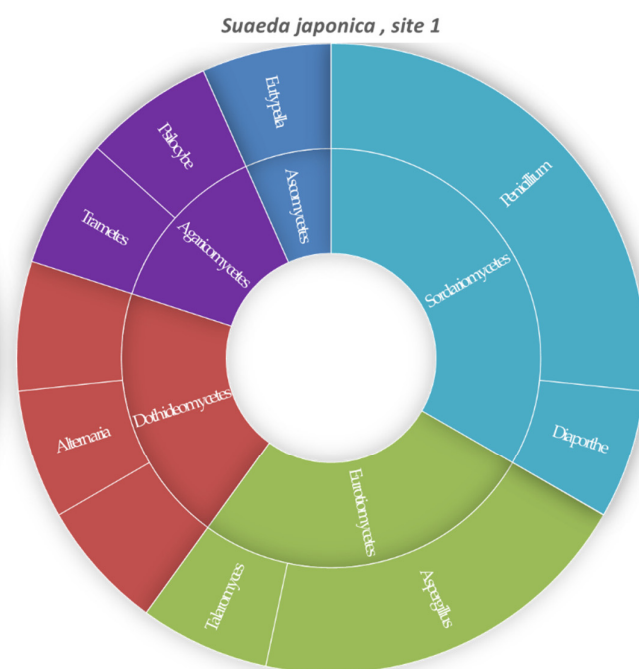
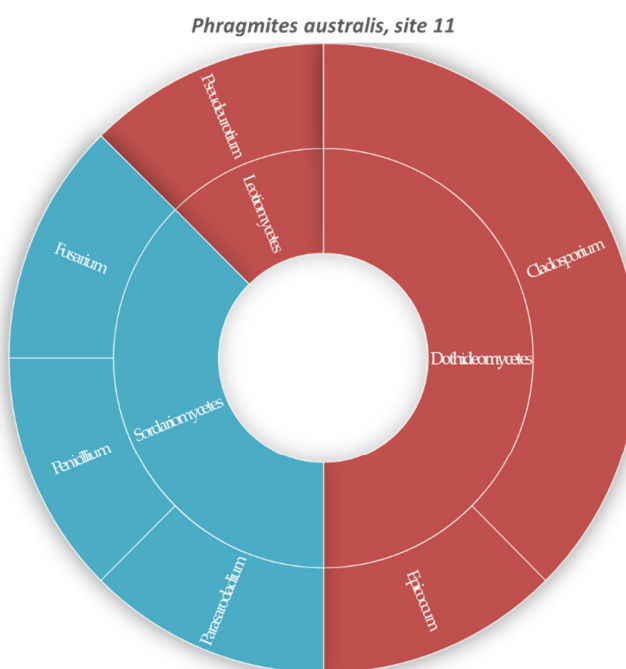
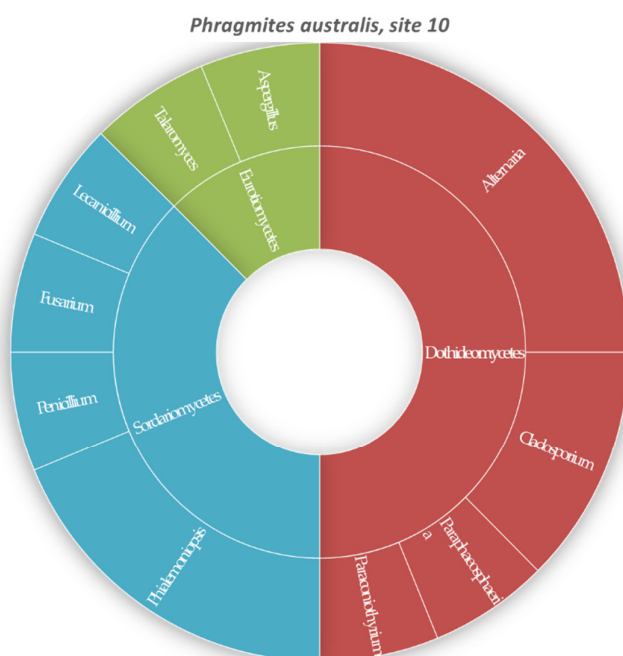
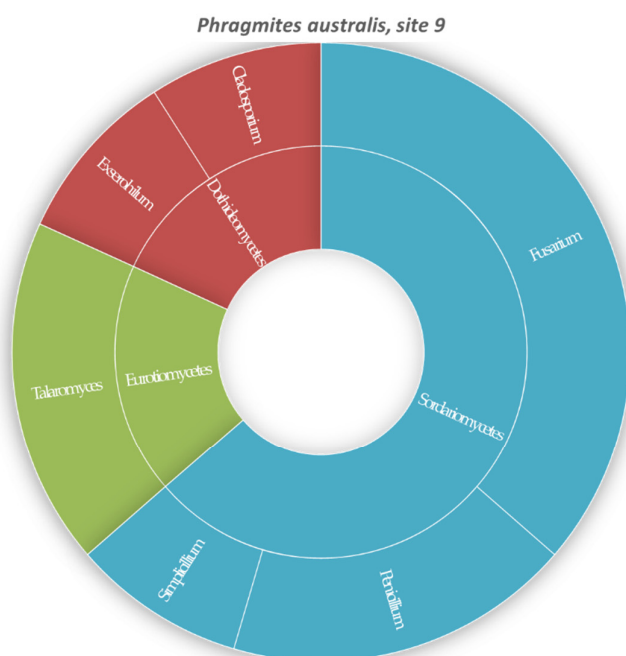
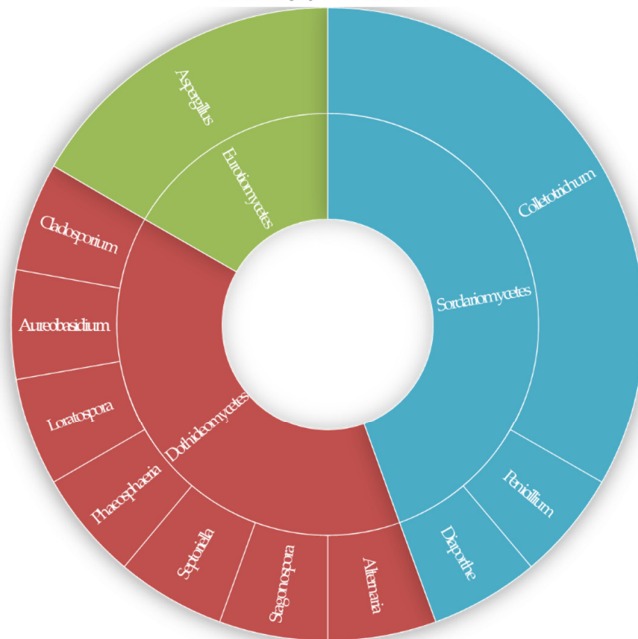


Figure S2. Distribution of fungal endophyte symbiosis with each halophyte species and colony



Phragmites australis, site 5*Phragmites australis*, site 6*Phragmites australis*, site 7*Phragmites australis*, site 8



Suaeda japonica, site 2*Suaeda japonica*, site 3*Suaeda japonica*, site 4*Suaeda japonica*, site 5

