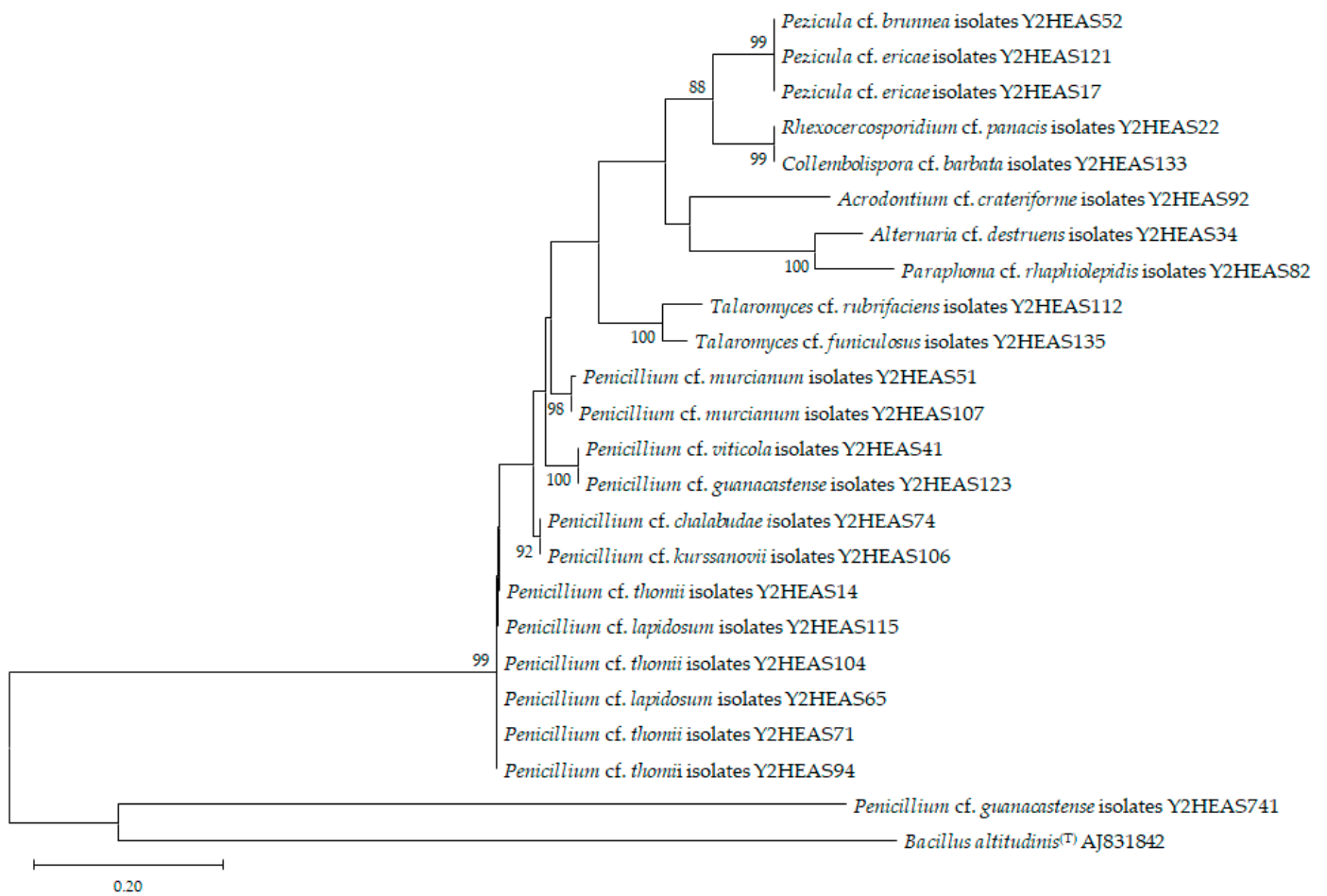
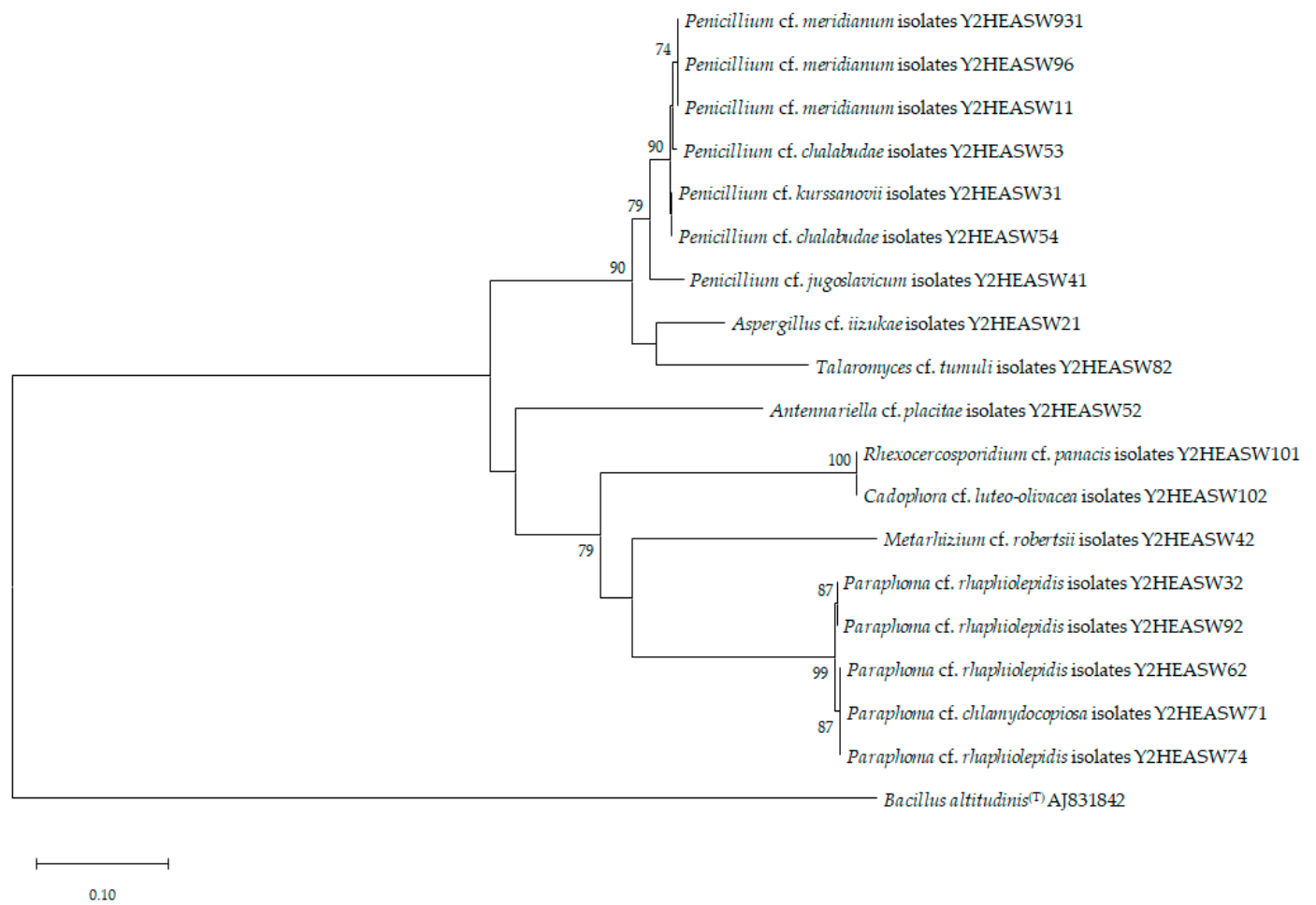
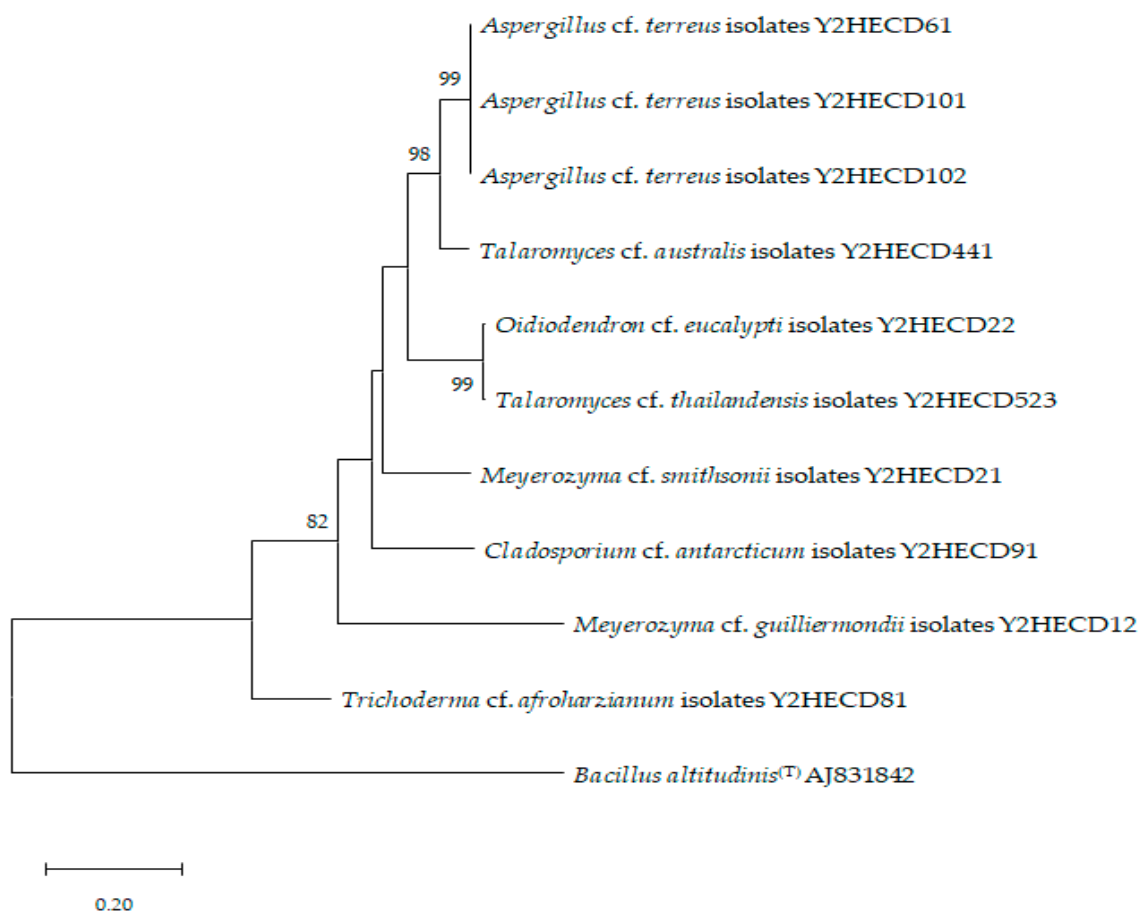


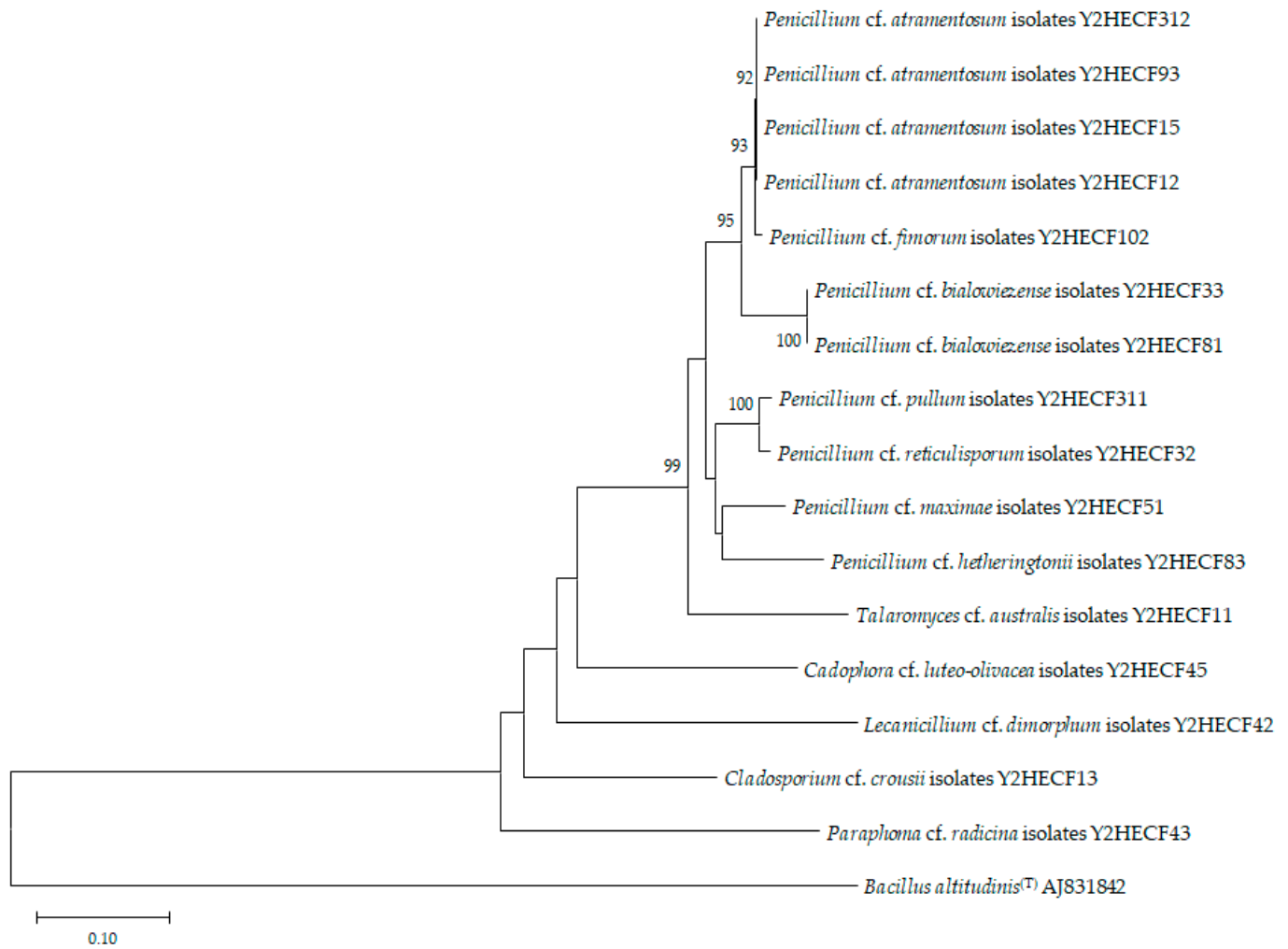
**Figure S1.** Phylogenetic relation of endophyte fungi in each host coastal plant species. (A) Phylogenetic tree of endophyte fungi in host species *Atriplex gmelinii*.

B) Phylogenic tree of endophyte fungi in host species *Aster sphathulifolius*

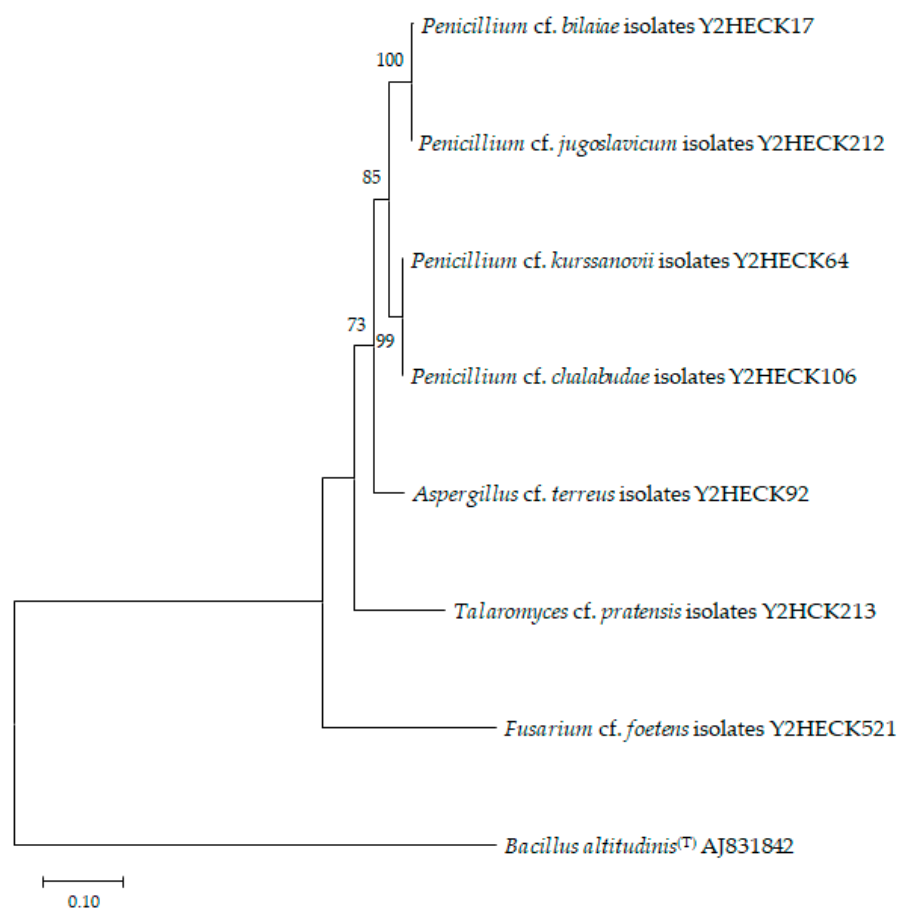
C) Phylogenic tree of endophyte fungi in host species *Artemisia scoparia*

D) Phylogenic tree of endophyte fungi in host species *Cynodon dactylon*

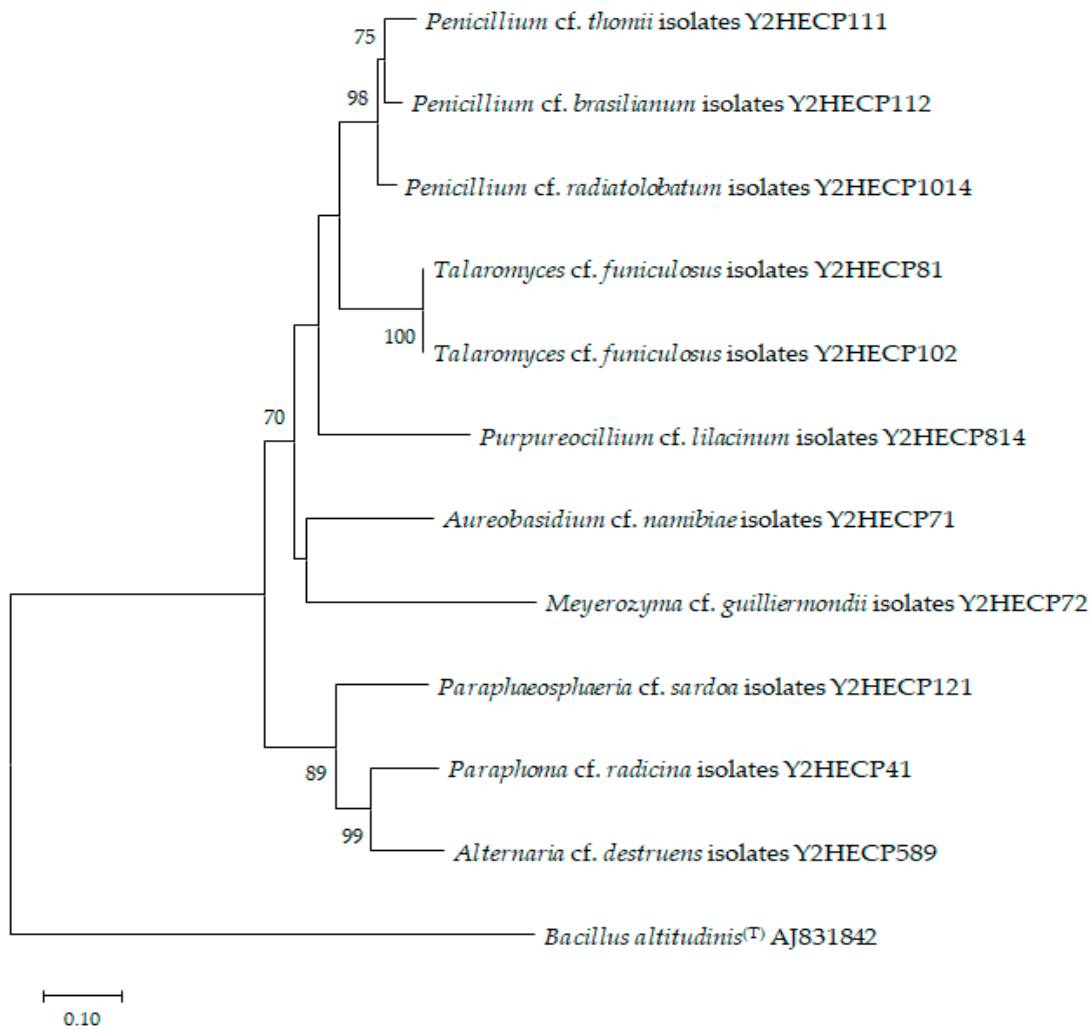


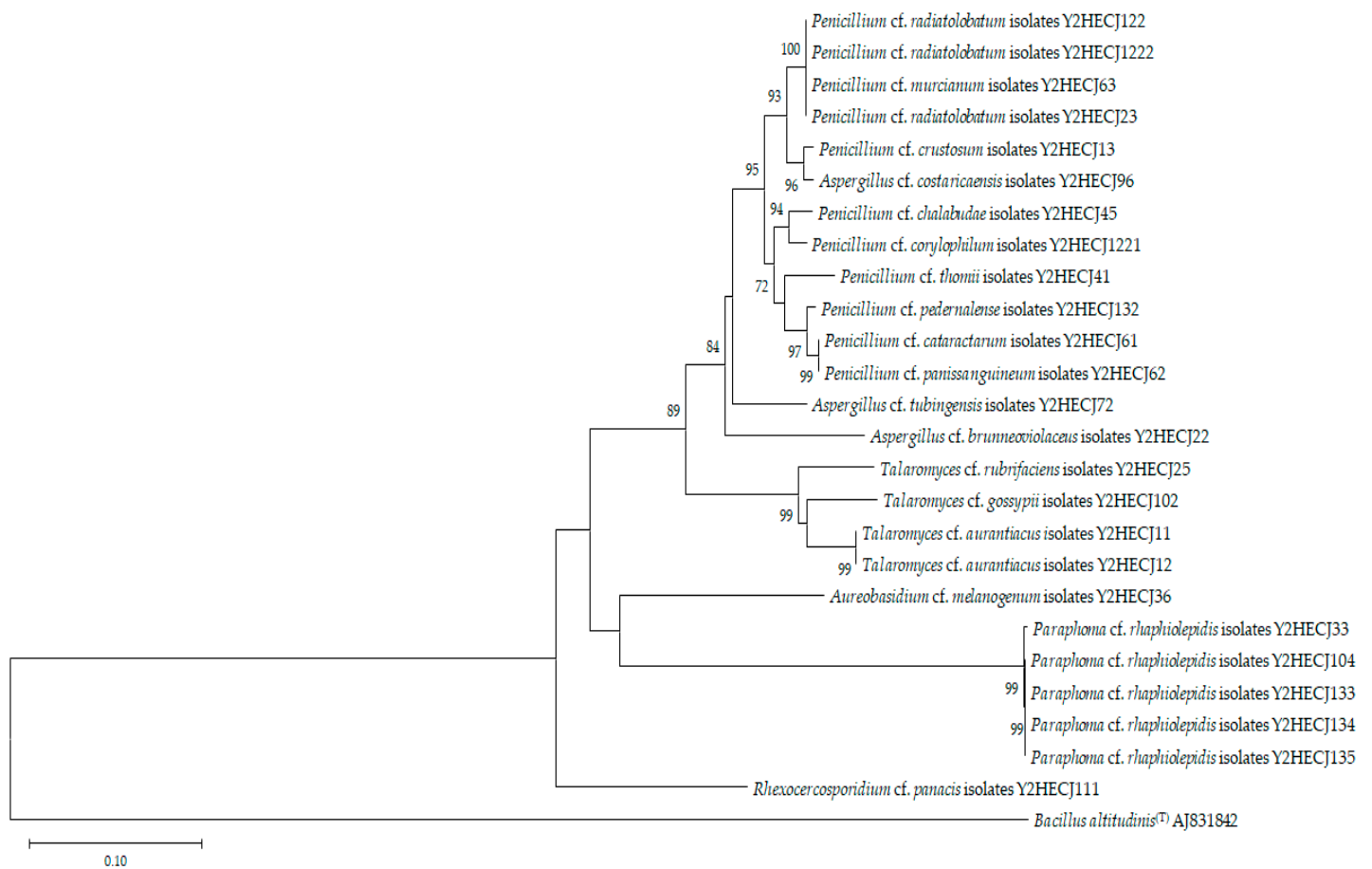
E) Phylogenic tree of endophyte fungi in host species *Cerastium fischerianum*

F) Phylogenic tree of endophyte fungi in host species *Carex kobomugi*



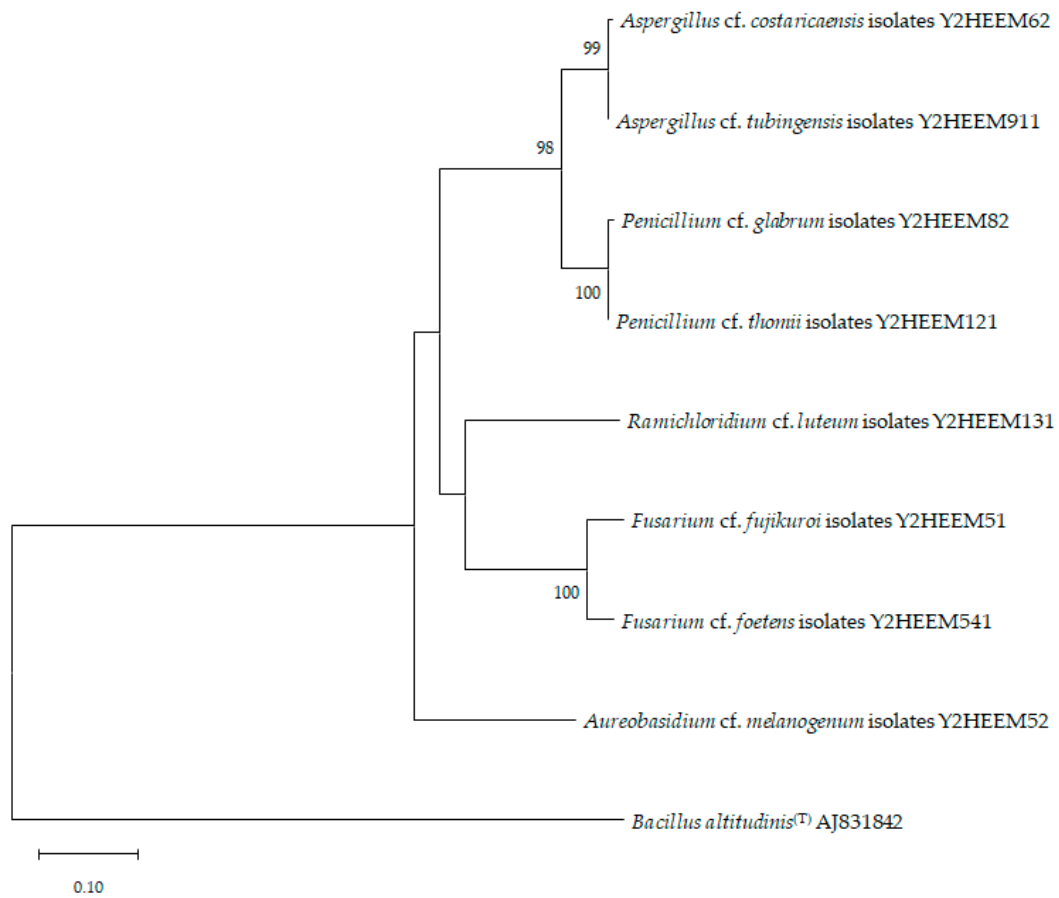
G) Phylogenic tree of endophyte fungi in host species *Carex pumila*

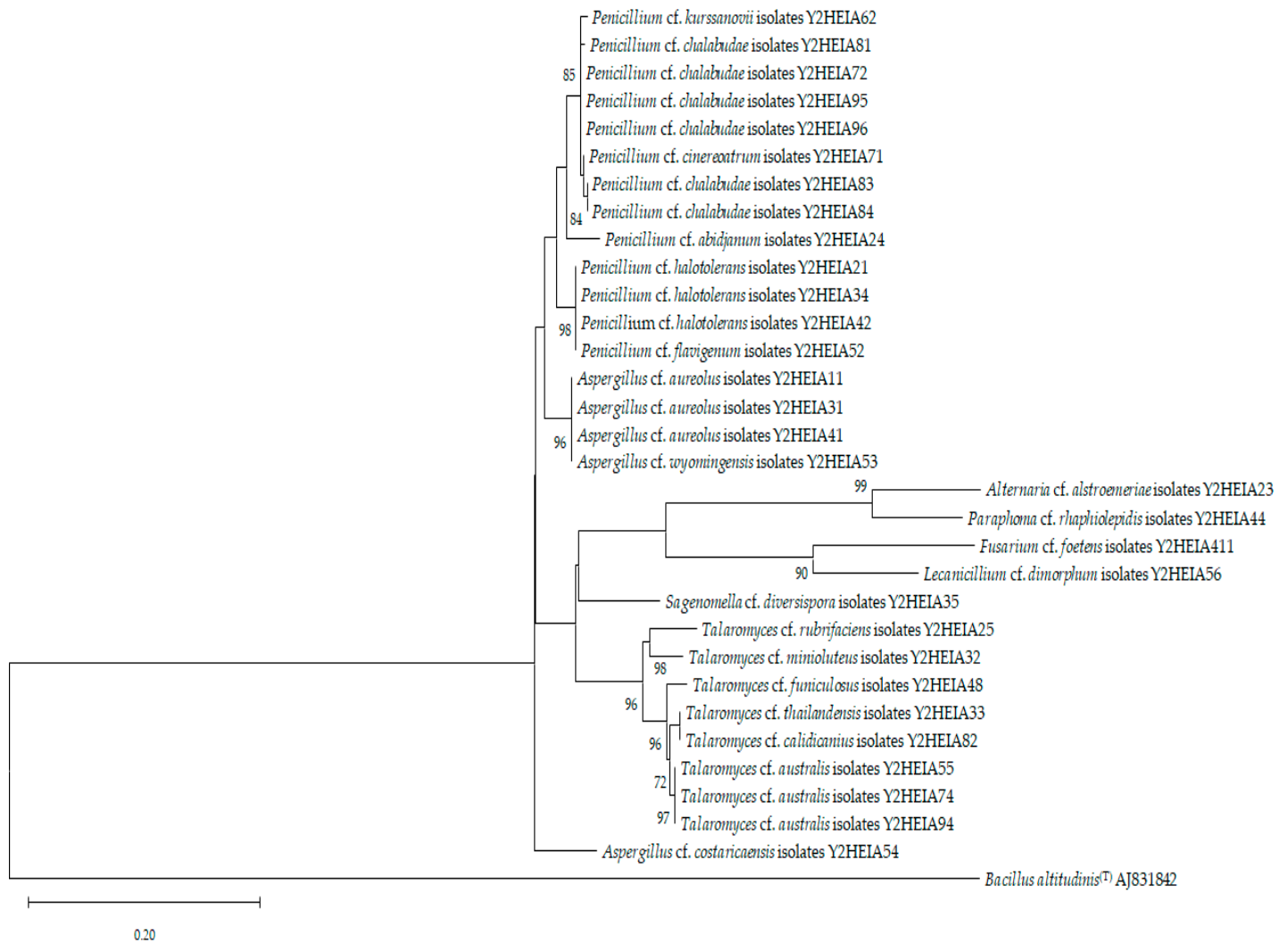


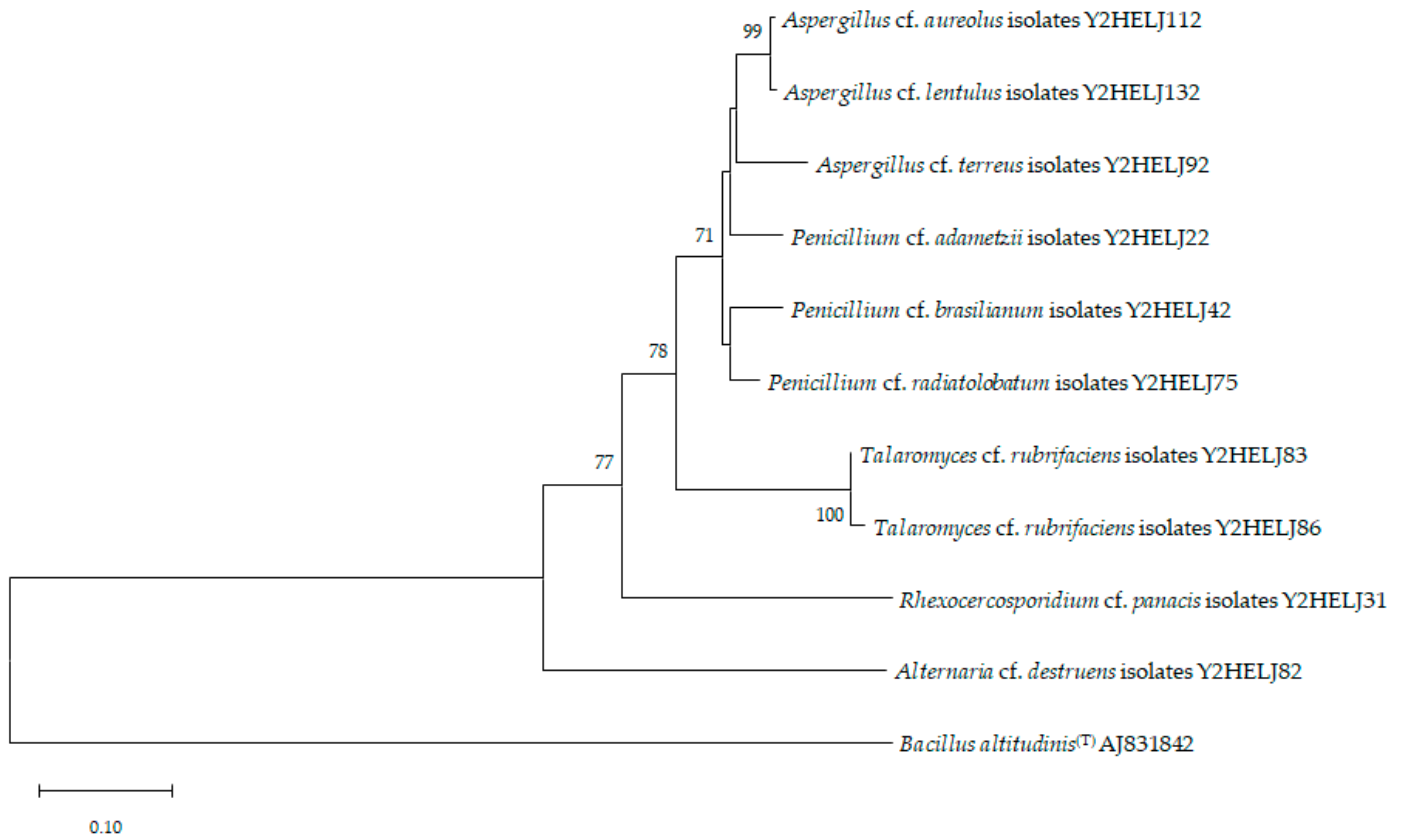
H) Phylogenic tree of endophyte fungi in host species *Cnidium japonicum*



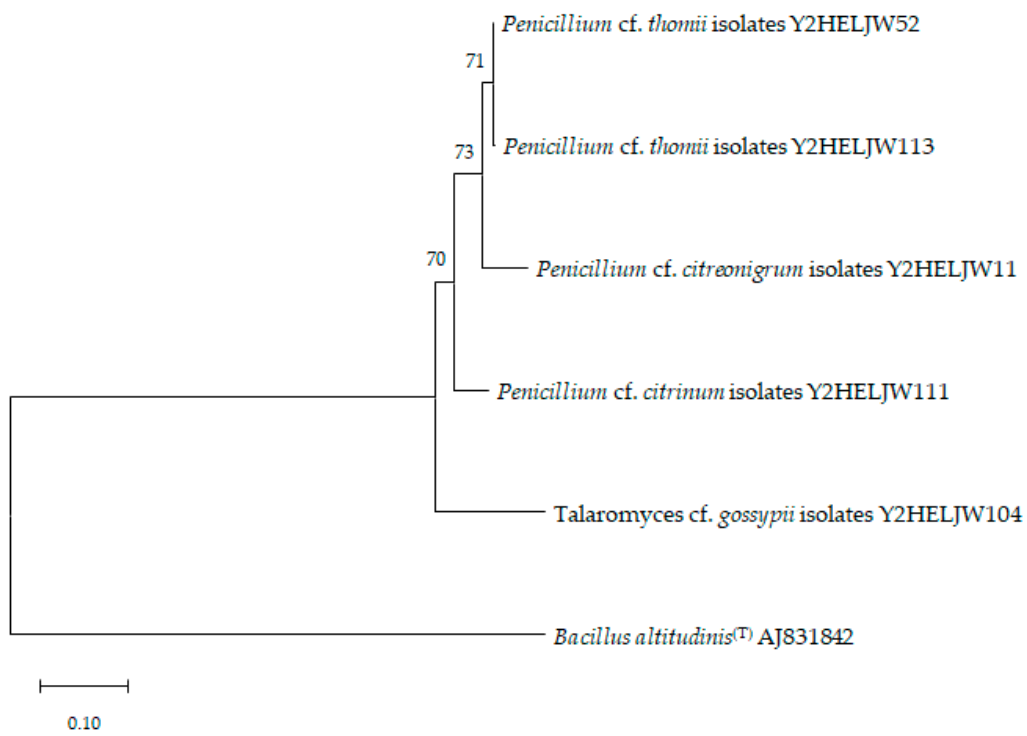
I) Phylogenetic tree of endophyte fungi in host species *Elymus mollis*



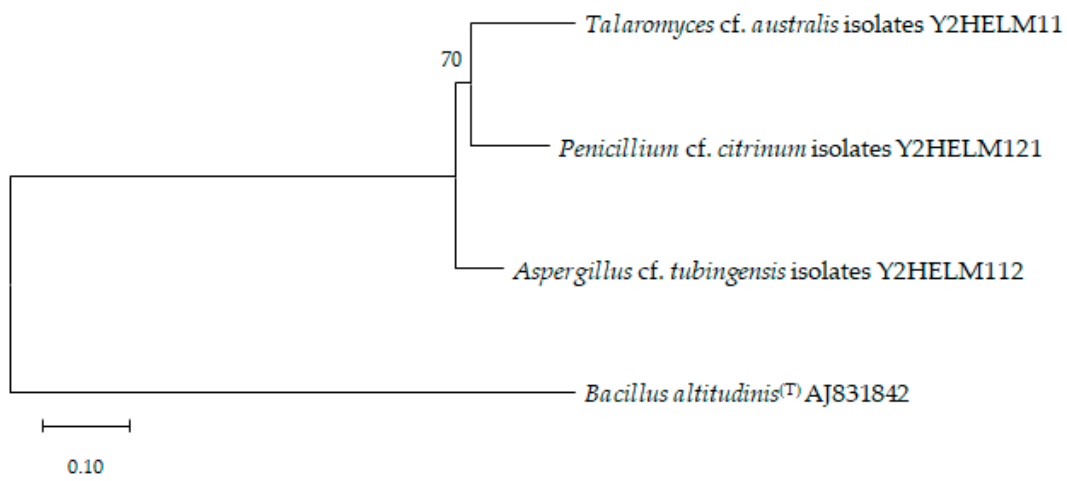
J) Phylogenetic tree of endophyte fungi in host species *Ischaemum antheophoroides*

K) Phylogenic tree of endophyte fungi in host species *Linaria japonica*

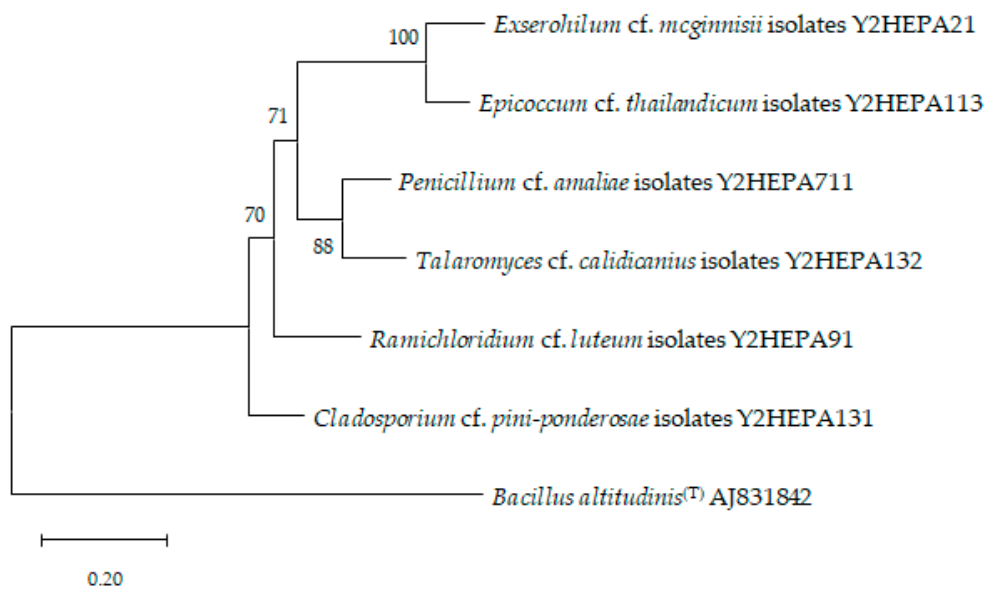
L) Phylogenic tree of endophyte fungi in host species *Lathyrus japonicus*

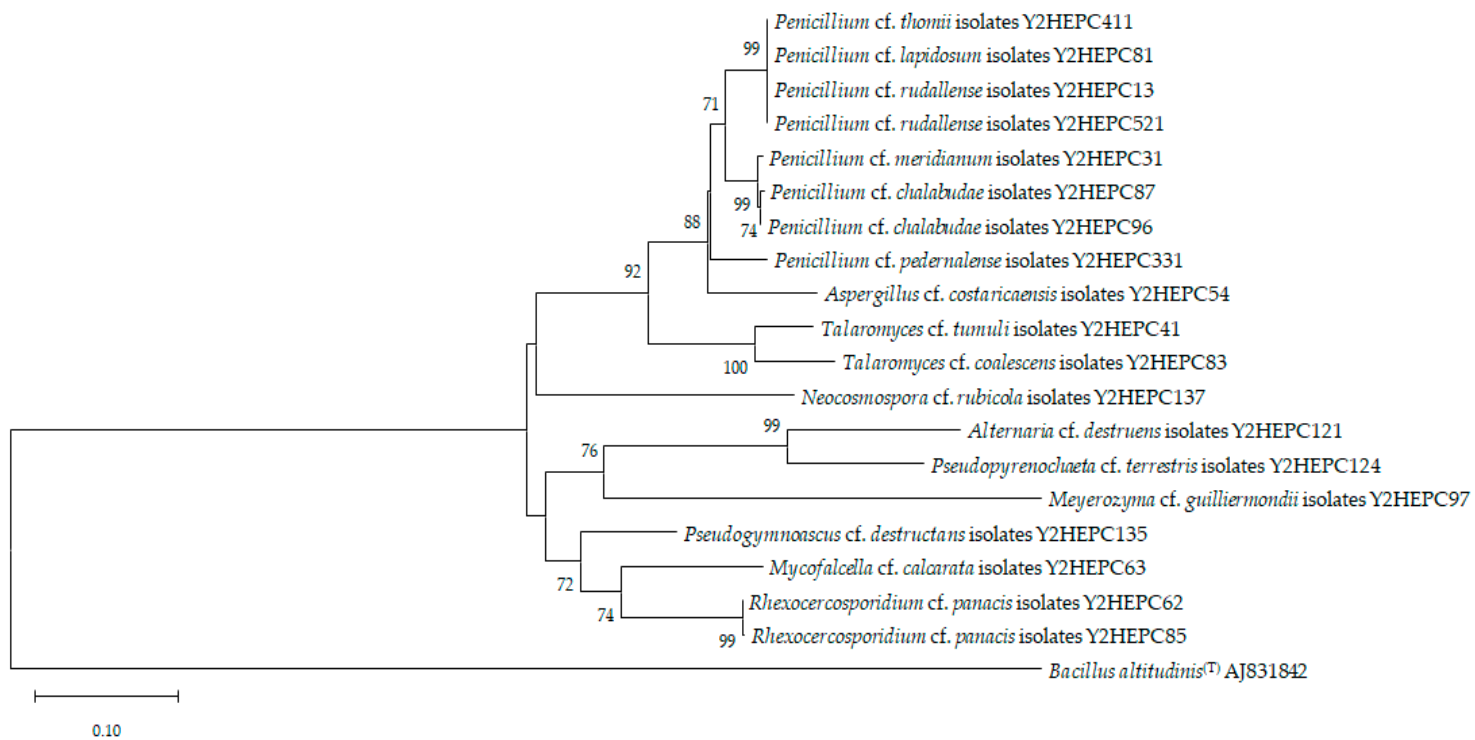


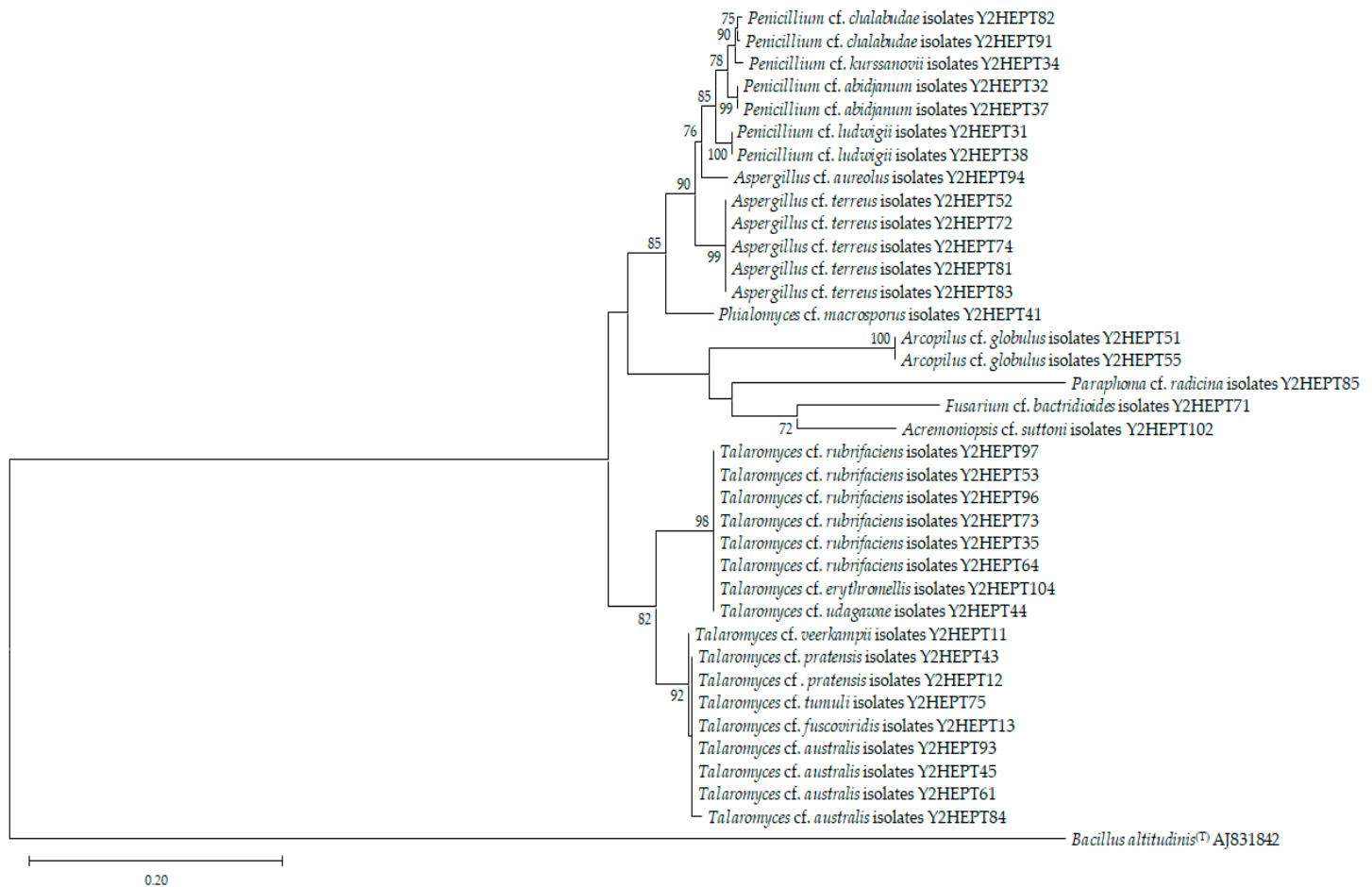
M) Phylogenic tree of endophyte fungi in host species *Lysimachia mauritiana*



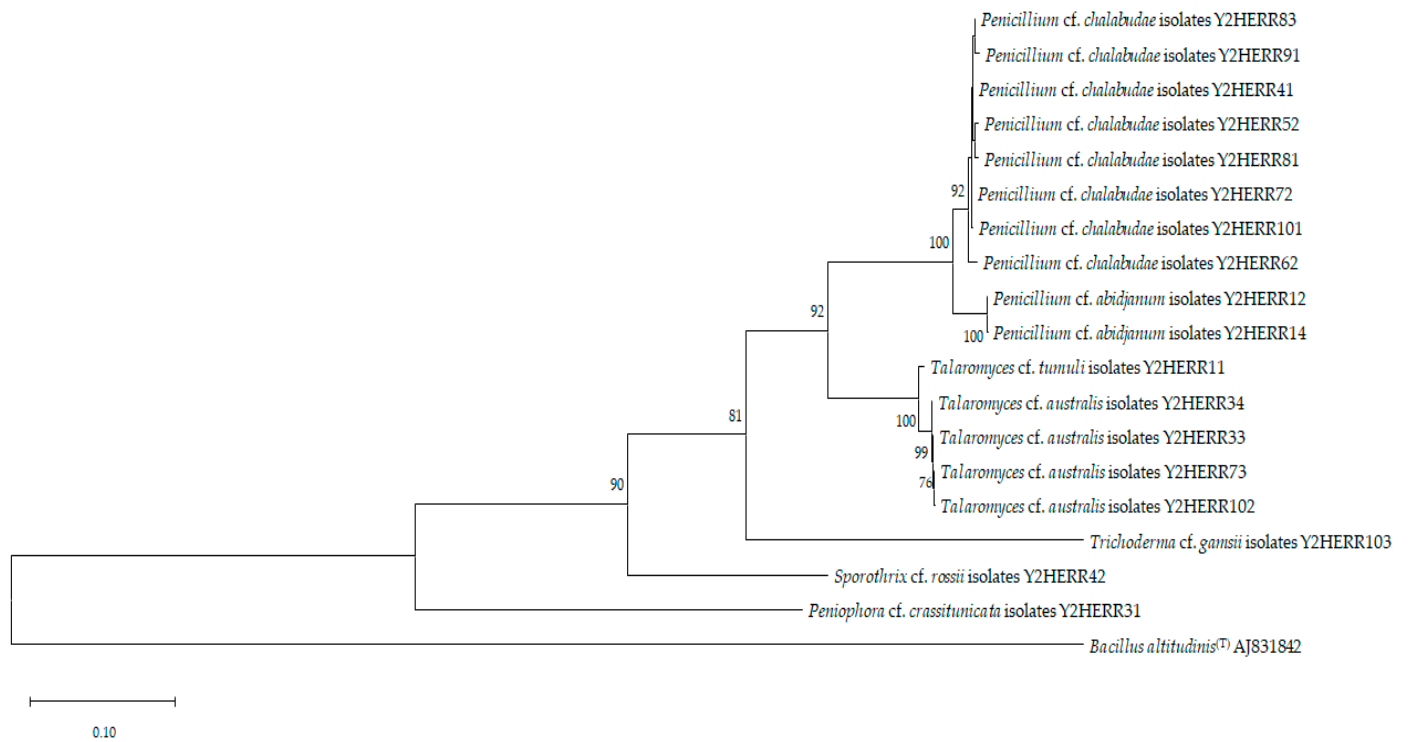
N) Phylogenetic tree of endophyte fungi in host species *Phragmites australis*

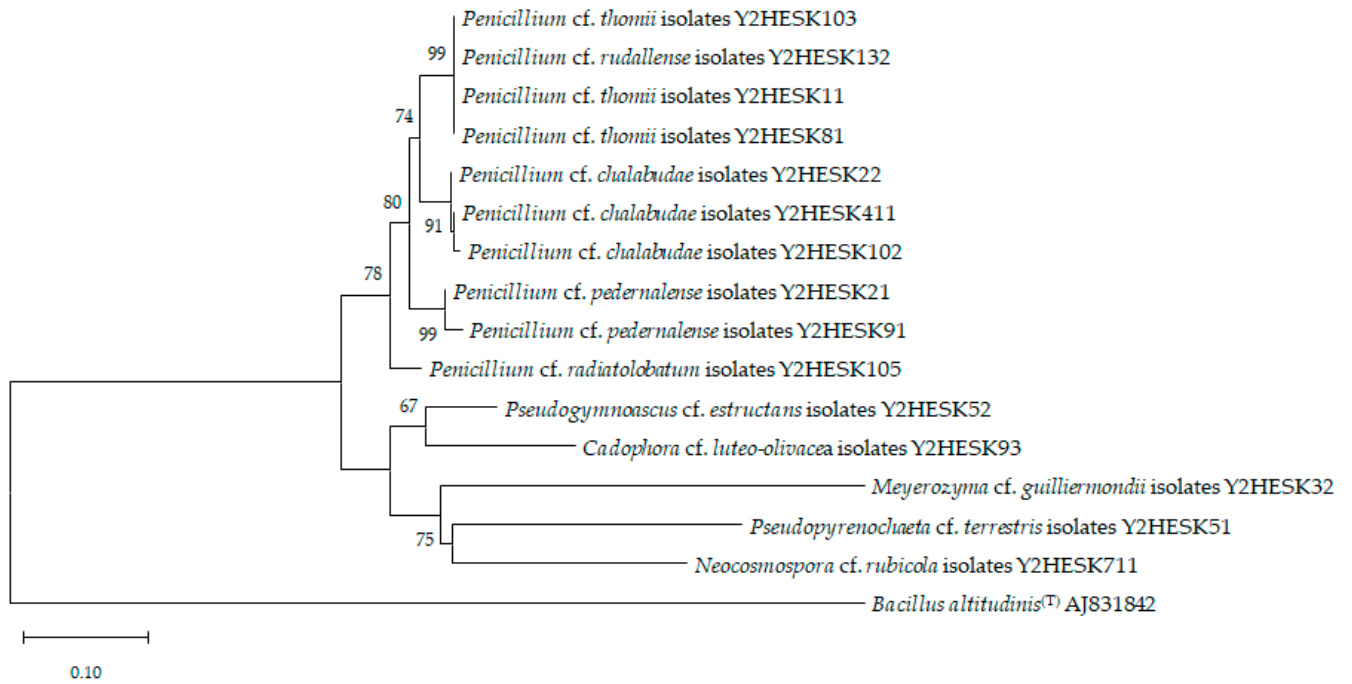


O) Phylogenic tree of endophyte fungi in host species *Plantago camtschatica*

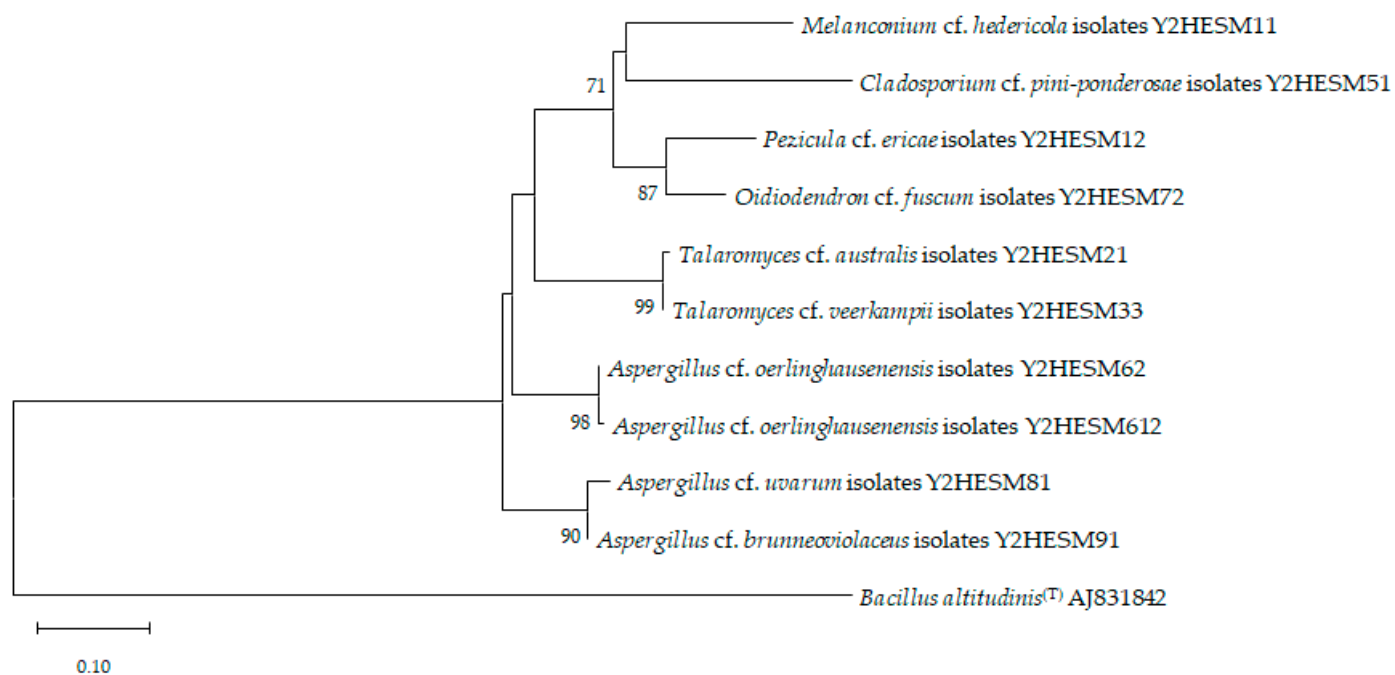
P) Phylogenic tree of endophyte fungi in host species *Pinus thunbergii*

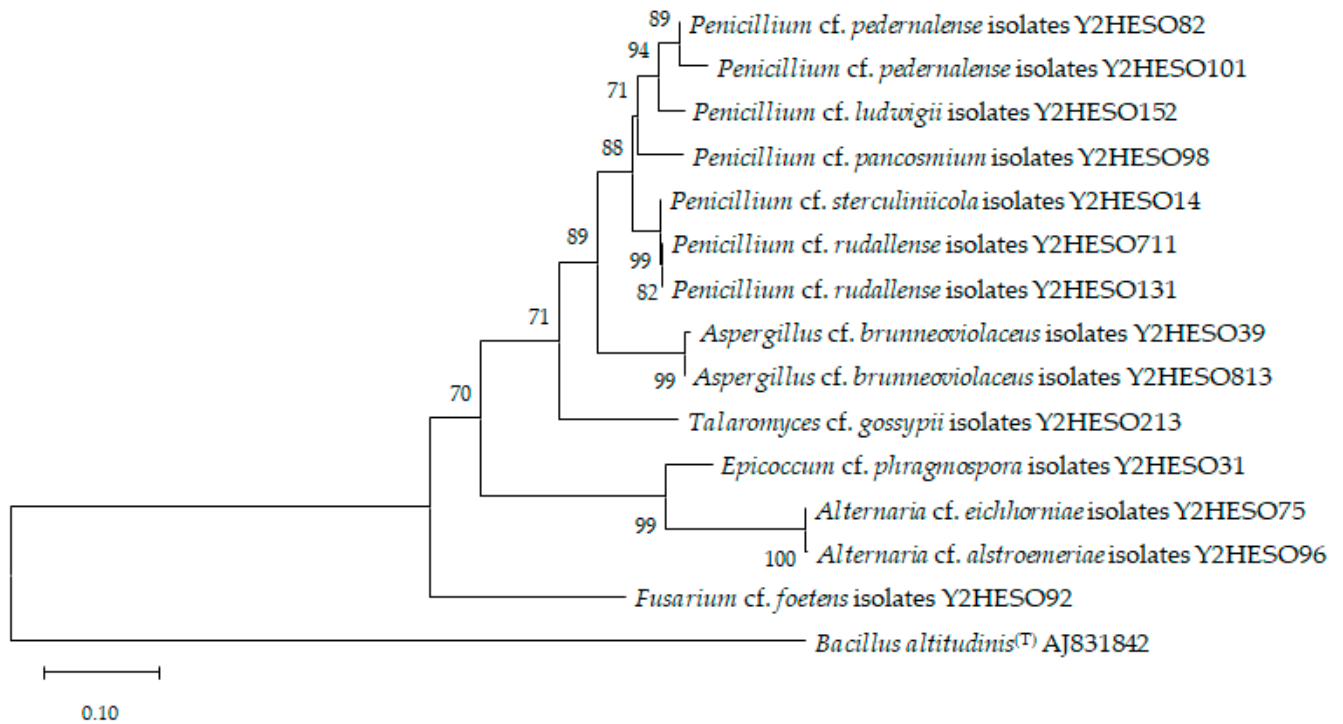


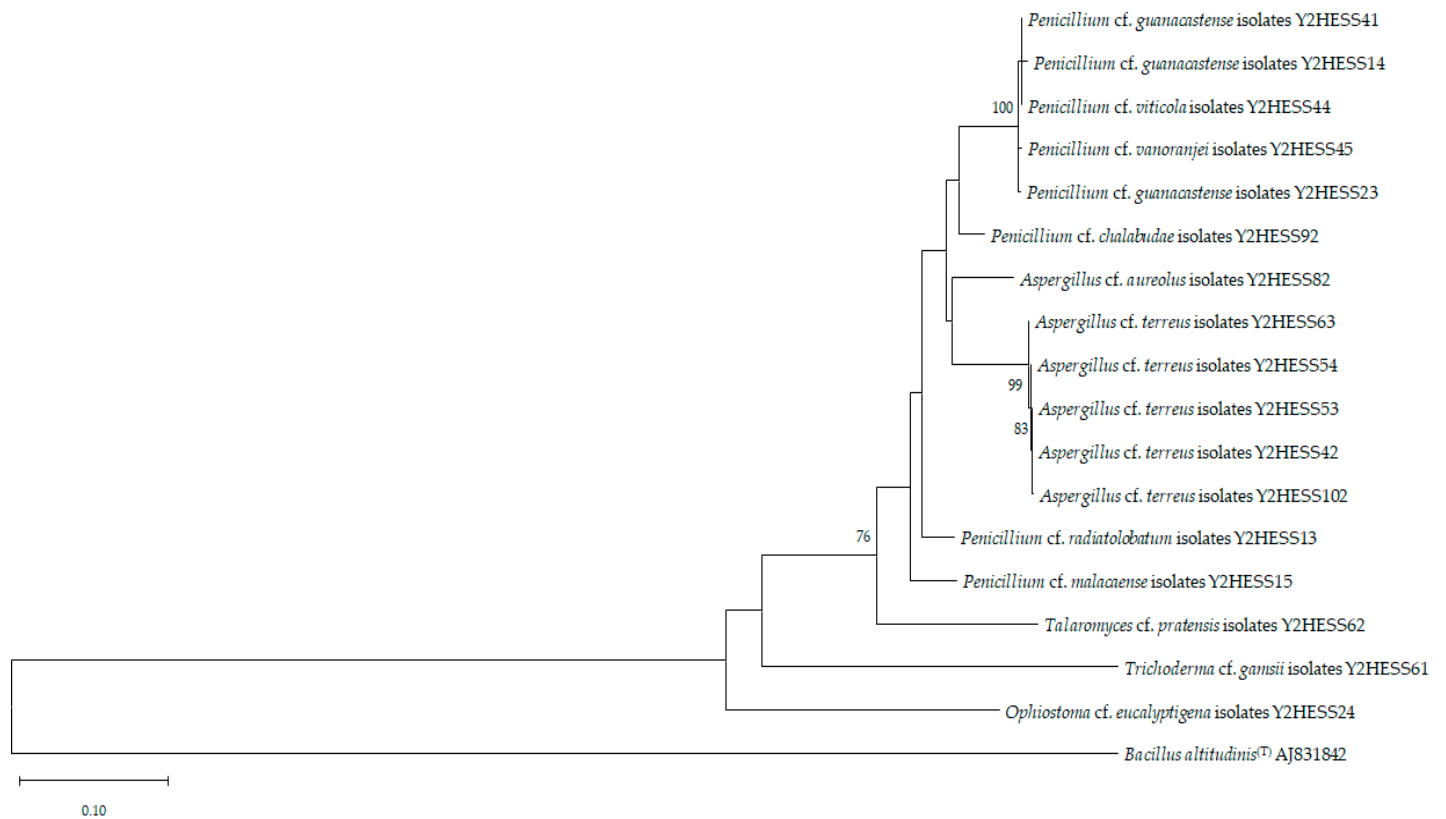
Q) Phylogenetic tree of endophyte fungi in host species *Rosa rugosa*

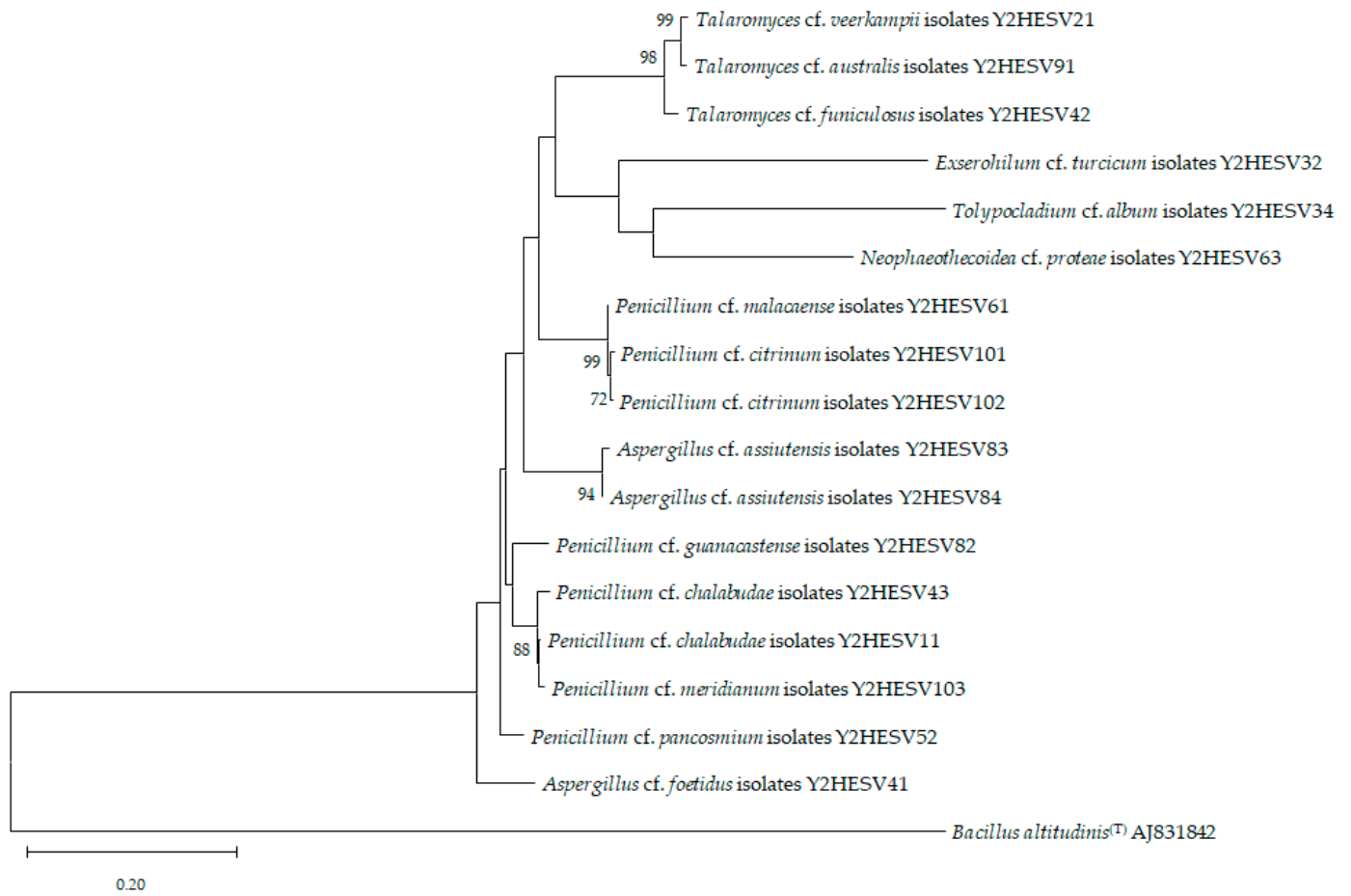
R) Phylogenic tree of endophyte fungi in host species *Sedum kamtschaticum*

S) Phylogenic tree of endophyte fungi in host species *Spergularia marina*

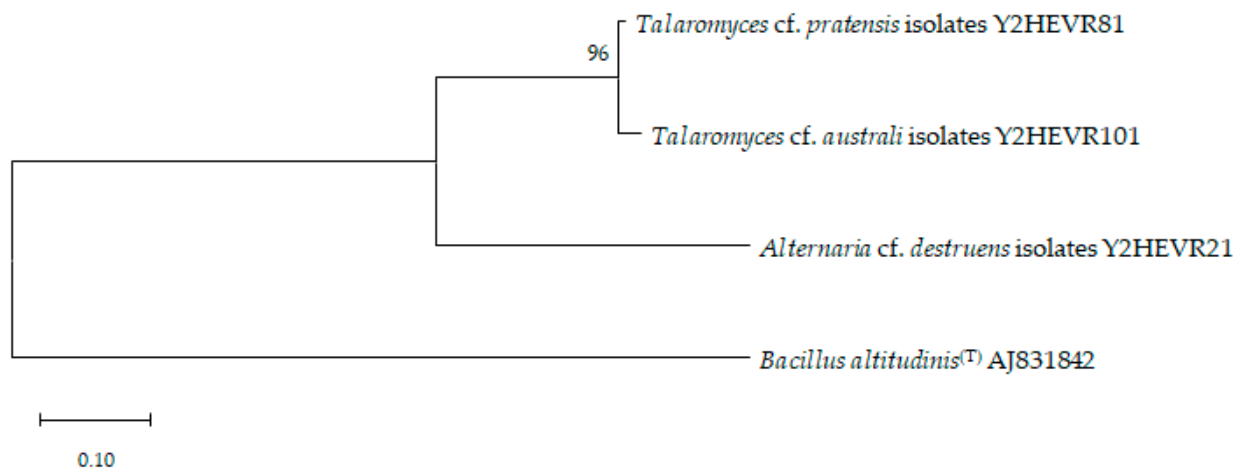


T) Phylogenic tree of endophyte fungi in host species *Sedum oryzifolium*

U) Phylogenetic tree of endophyte fungi in host species *Scutellaria strigillosa*

V) Phylogenic tree of endophyte fungi in host species *Setaria viridis*

W) Phylogenic tree of endophyte fungi in host species *Vitex rotundifolia*



X) Phylogenic tree of endophyte fungi in host species *Zoysia sinica*

