

Supplementary Materials:

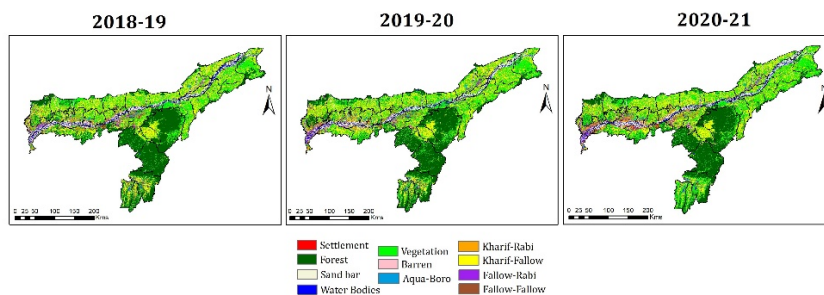


Figure S1. Year-wise cropping systems area of Assam (2018-19 to 2020-21).

Table S1. Results of accuracy assessment for cropping system maps for three years using error matrix method.

Outputs generated	Year	User's accuracy (%)	Producer's accuracy (%)	Overall accuracy (%)	Kappa
Cropping system	2018-19	86.1	90.1	90.3	0.89
	2019-20	89.8	93.7	91.2	0.90
	2020-21	86.1	90.8	89.1	0.88