

Supplementary Materials

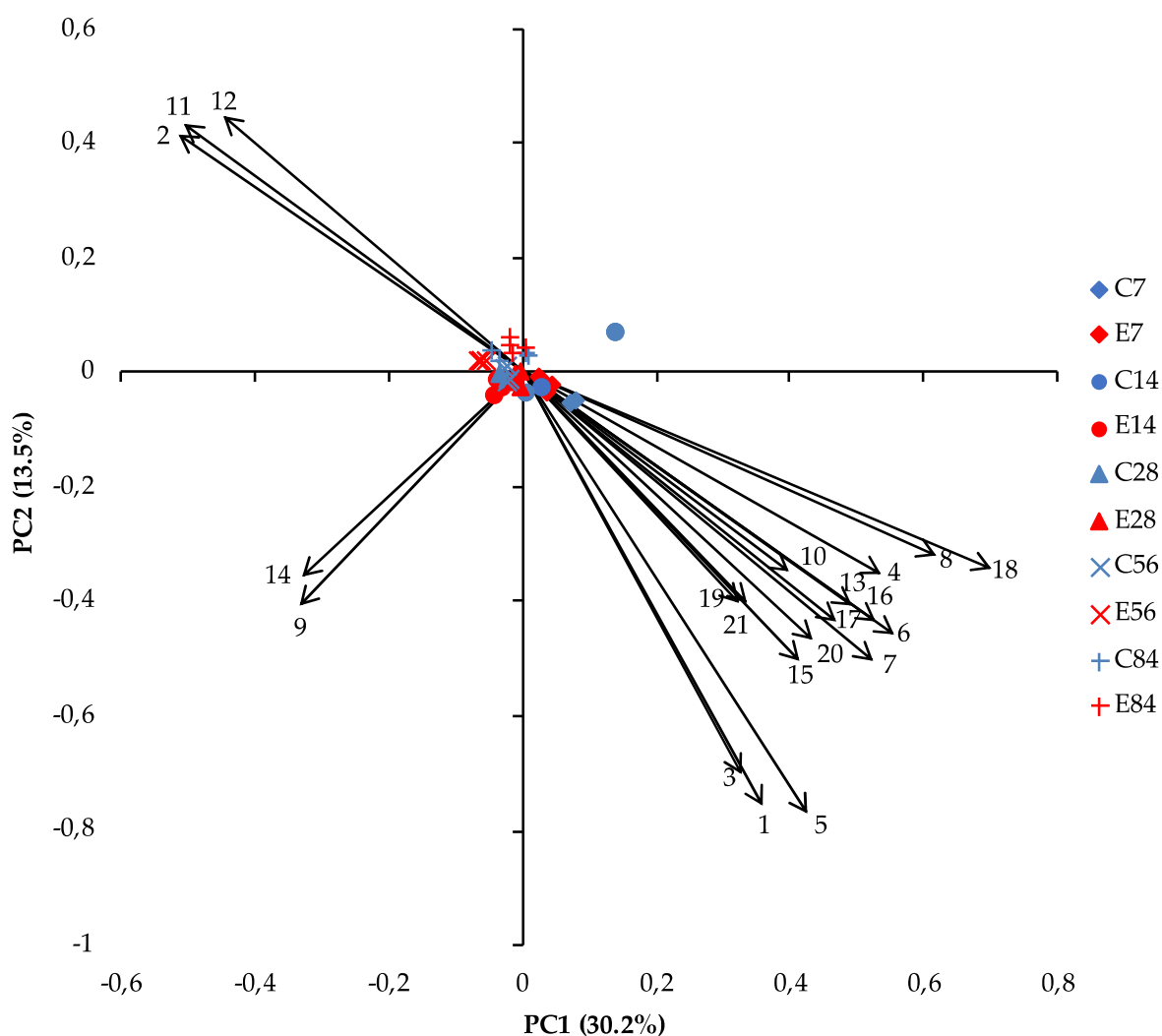


Figure S1. PCoA by UniFrac weighted distance matrix. Arrows indicate significant correlations at the level of bacterial families: 1 – Sphingomonadaceae, 2 - Vicinamibacterales_uncultured, 3 – Oxalobacteraceae, 4 – Acetobacteraceae, 5 – Xanthomonadaceae, 6 – Beijerinckiaceae, 7 – Rhizobiaceae, 8 – Streptomyetaceae, 9 - WPS-2_fa, 10 - Nocardiaceae, 11 - Planctomyce-tota_OM190_fa, 12 - Vicinamibacteria_Subgroup_17_fa, 13 – Pseudomonadaceae, 14 - Xanthomonadales_unclassified, 15 - Ktedonobacteria_B12-WMSP1_fa, 16 – Bacillaceae, 17 – Weeksel-laceae, 18 – Micrococcaceae, 19 – Herpetosiphonaceae, 20 – Phormidiaceae, 21 – Pleomorpho-monadaceae.

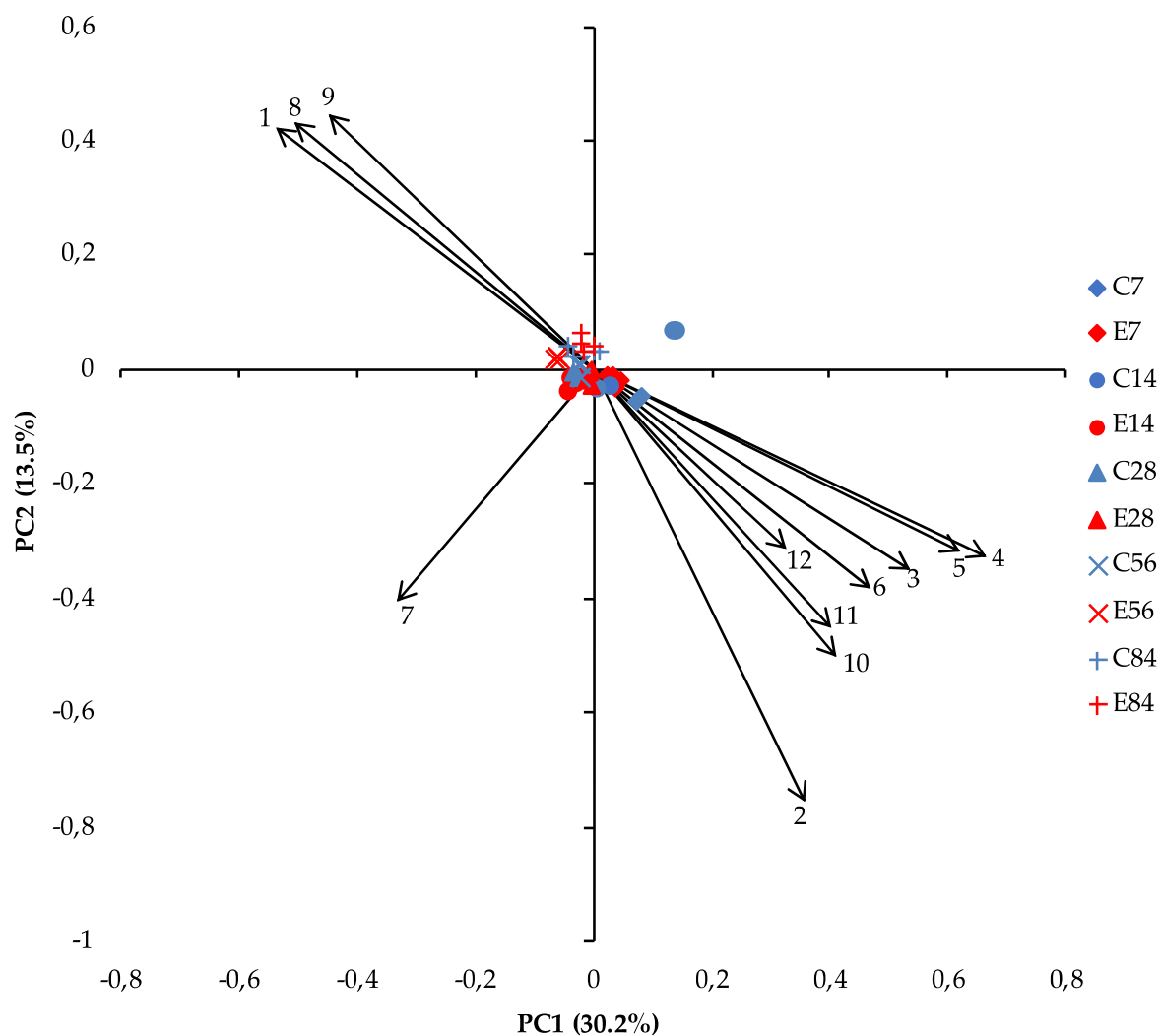


Figure S2. PCoA by UniFrac weighted distance matrix. Arrows indicate significant correlations at the level of orders: 1 – Vicinamibacterales, 2 – Sphingomonadales, 3 – Acetobacterales, 4 – Bacillales, 5 – Streptomycetales, 6 – Pseudomonadales, 7 – WPS-2_order, 8 – Planctomycetota_OM190_order, 9 – Vicinamibacteria_Subgroup_17, 10 – Ktedonobacteria_B12-WMSP1, 11 – Cyanobacterales, 12 – Saccharimonadales.

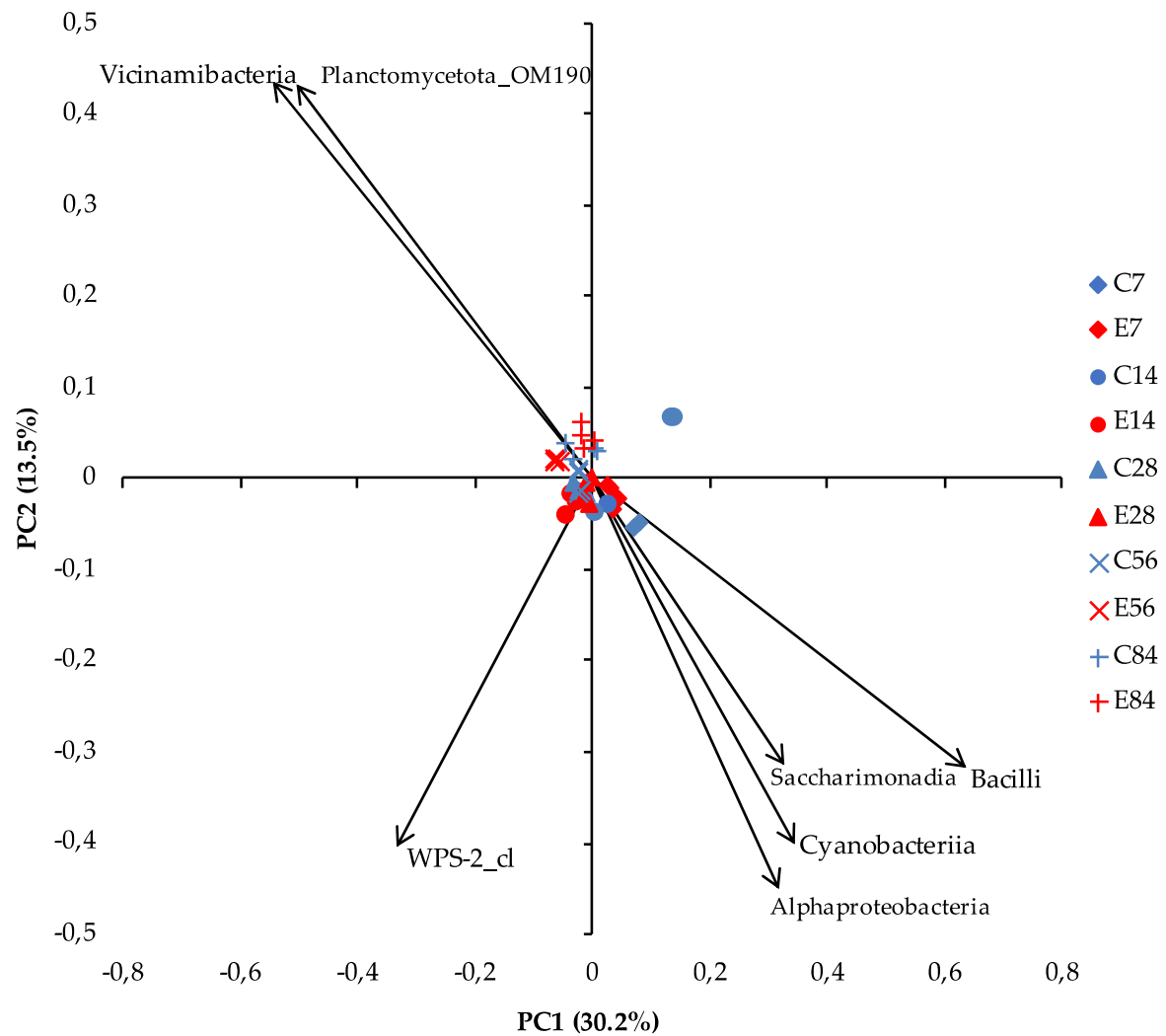


Figure S3. PCoA by UniFrac weighted distance matrix. Arrows indicate significant correlations at the class level.

Table S1. AMOVA analysis of bacterial communities.

Groups	Source of variation	SS	df	MS	Fs	p-value
C7-E7	Among groups	0.023401	1	0.023401	4.10145	0.0229
	Within groups	0.034233	6	0.005705		
C84-E84	Among groups	0.018644	1	0.018644	2.15226	0.0292
	Within groups	0.051974	6	0.008662		
C7-C84	Among groups	0.121267	1	0.121267	17.8917	0.028
	Within groups	0.040667	6	0.006778		
E7-E84	Among groups	0.074539	1	0.074539	9.82068	0.0232
	Within groups	0.04554	6	0.00759		

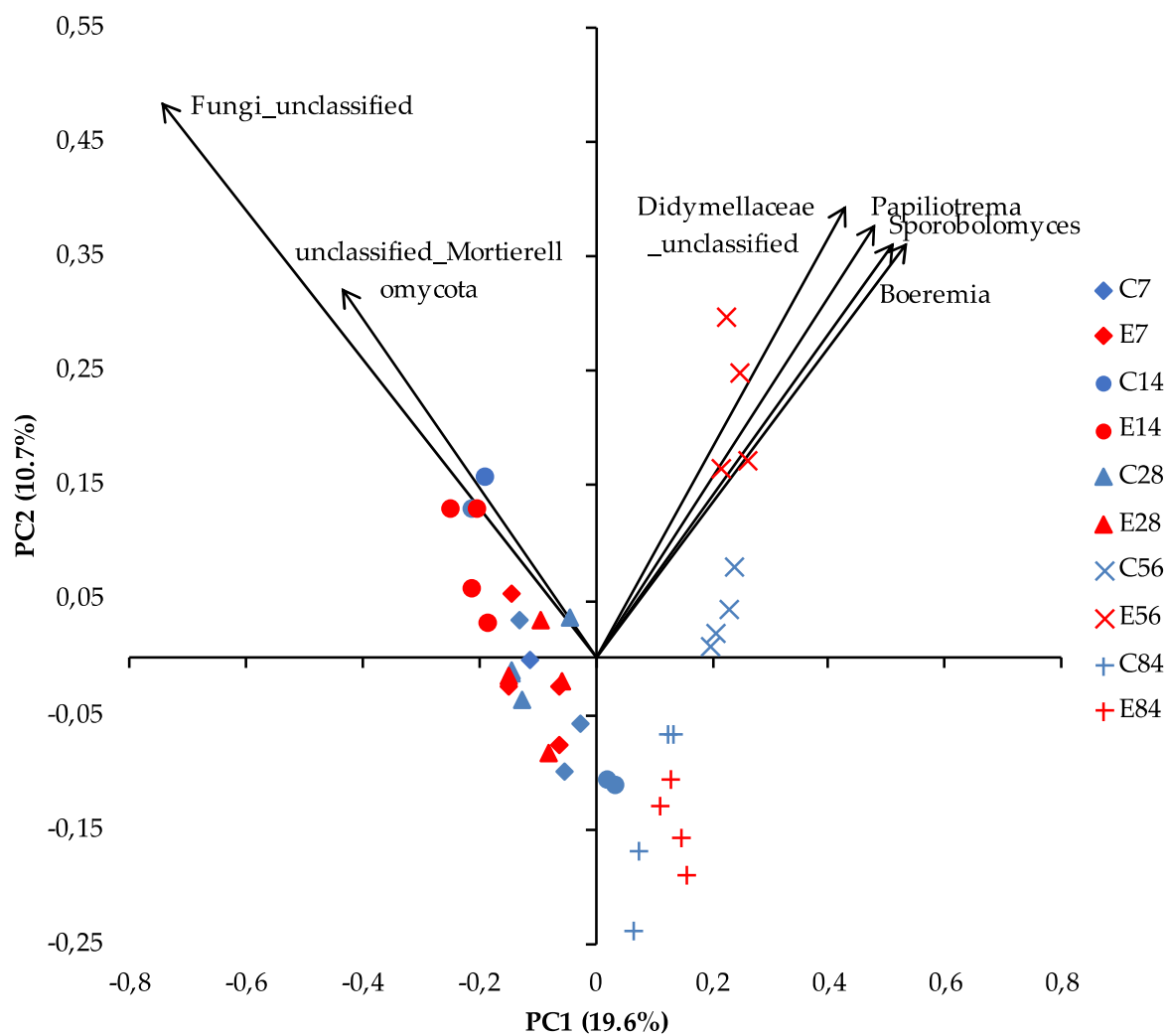


Figure S4. PCoA by UniFrac weighted distance matrix. Arrows indicate significant correlations at the genera level.

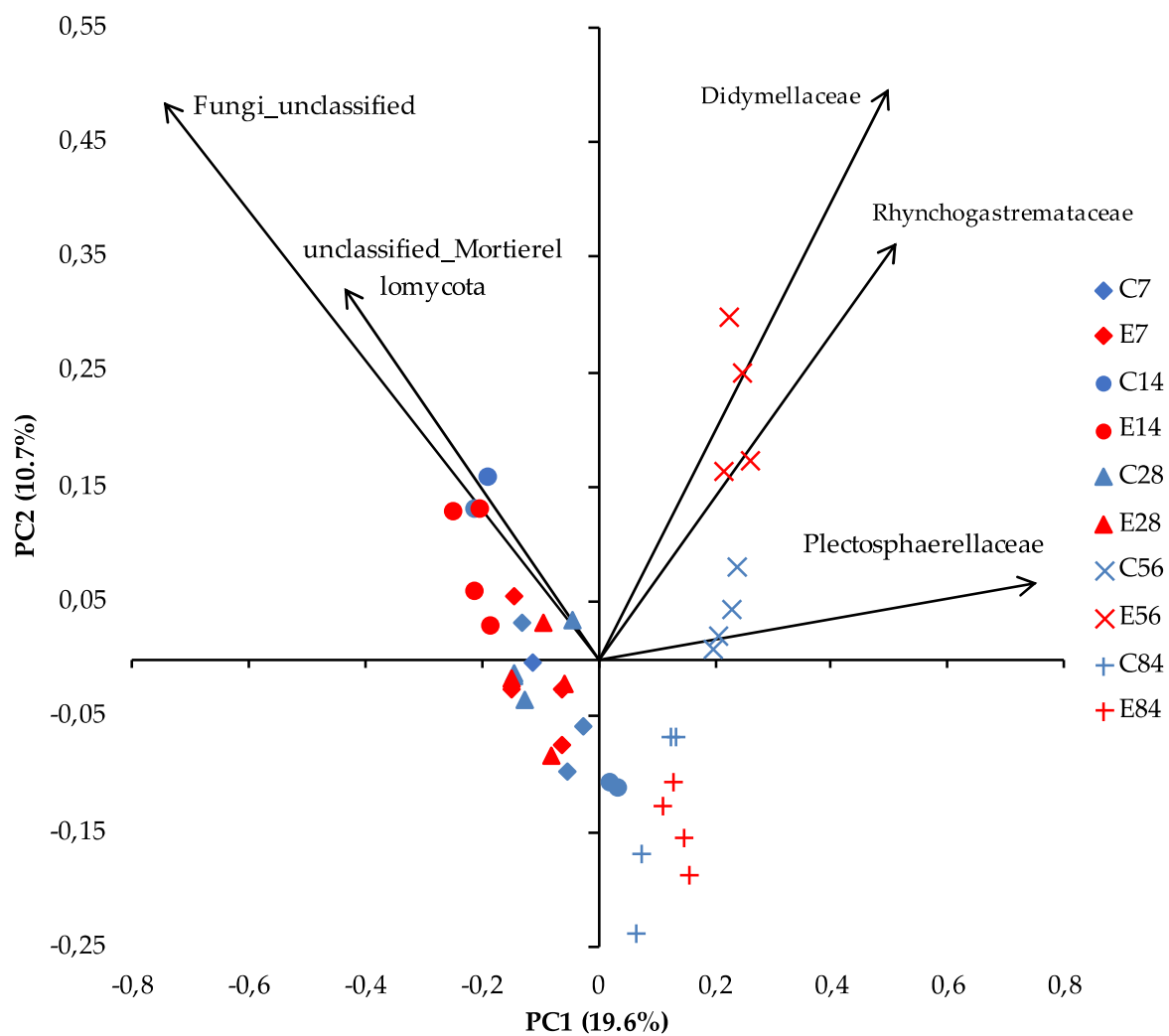


Figure S5. PCoA by UniFrac weighted distance matrix. Arrows indicate significant correlations at the family level

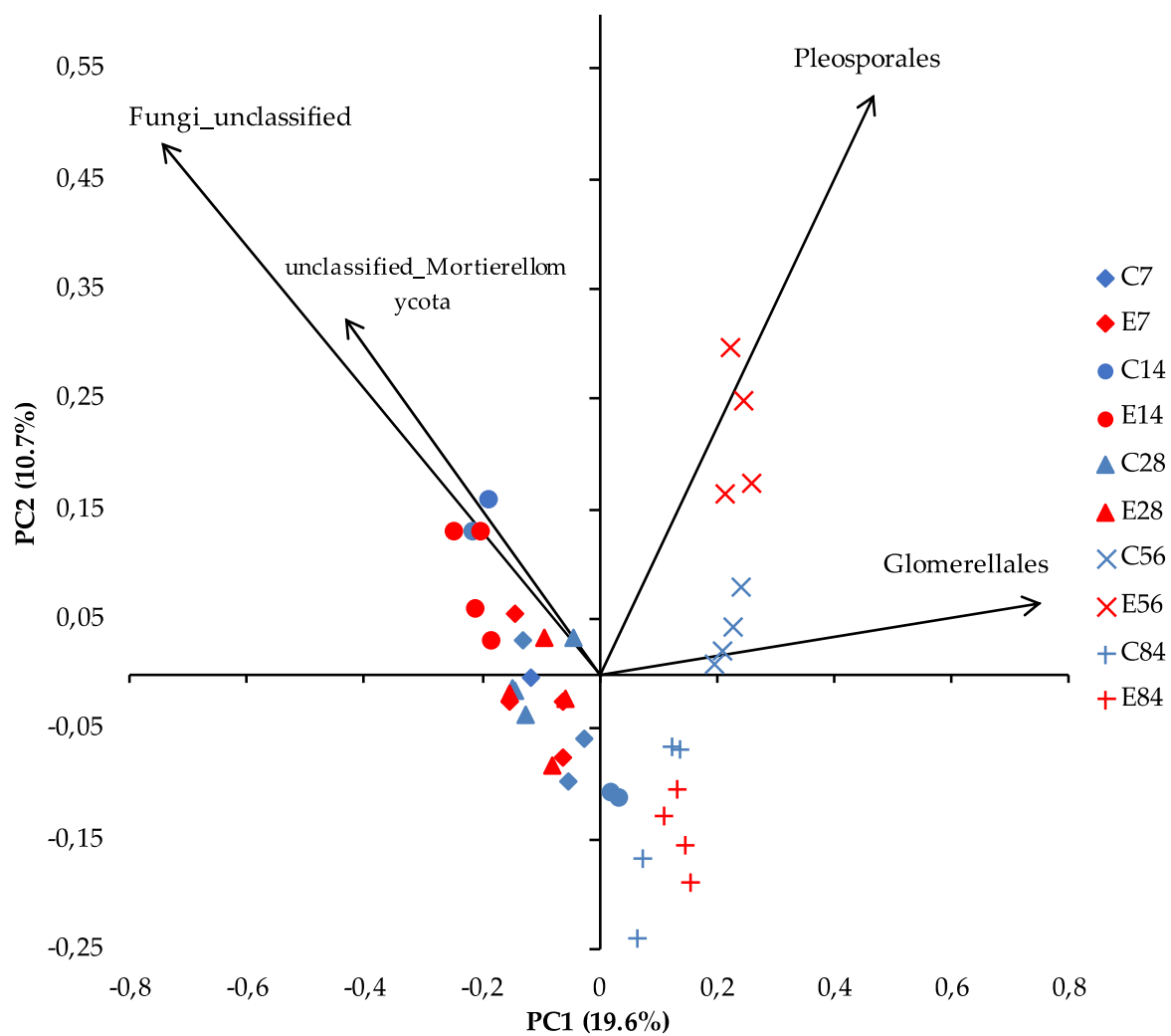


Figure S6. PCoA by UniFrac weighted distance matrix. Arrows indicate significant correlations at the level of orders

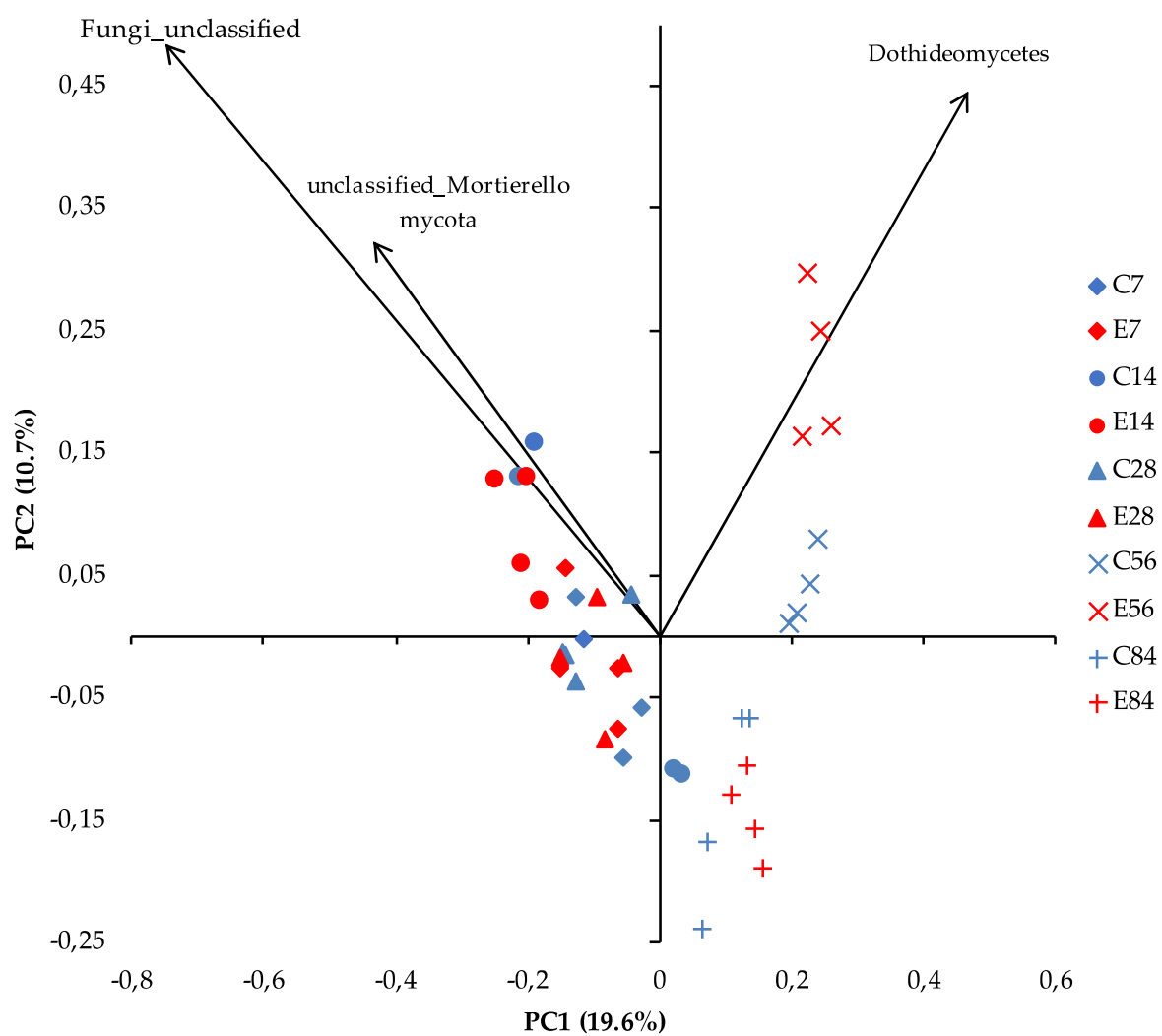


Figure S7. PCoA by UniFrac weighted distance matrix. Arrows indicate significant correlations at the class level

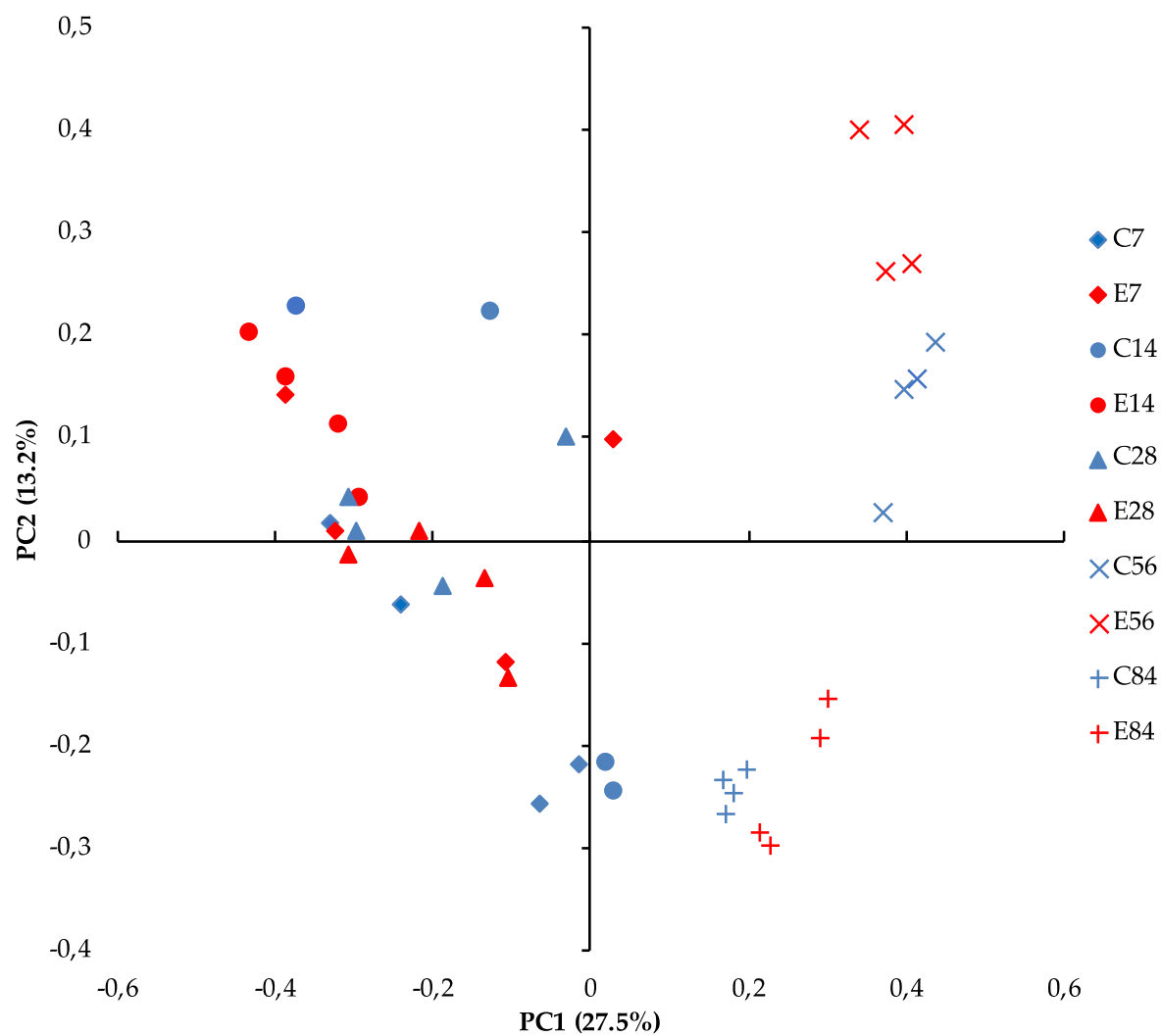


Figure S8. PCoA based on the Yue & Clayton measure of dissimilarity matrix (community structure at the OTU level).

Table S2. AMOVA analysis of fungal communities.

Groups	Source of variation	SS	df	MS	Fs	p-value
C7-E7	Among groups	0,324137	1	0,324137	2,16139	0,0589
	Within groups	0,899802	6	0,149967		
C84-E84	Among groups	0,319236	1	0,319236	2,56815	0,0302
	Within groups	0,745835	6	0,124306		
C7-C84	Among groups	0,574142	1	0,574142	4,92526	0,0301
	Within groups	0,699426	6	0,116571		
E7-E84	Among groups	0,74092	1	0,74092	4,69823	0,0301
	Within groups	0,946211	6	0,157702		