

Supplementary files

Lyso-Gb3 Increases $\alpha v\beta 3$ Integrin Gene Expression in Cultured Human Podocytes in Fabry Nephropathy

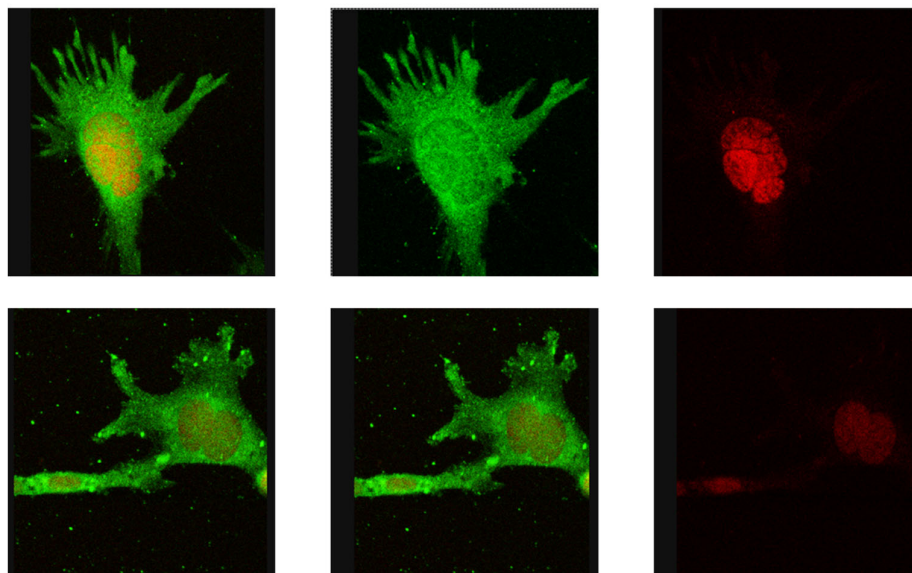


Figure S1. Densin. Morphology of cultured human podocytes and expression of the slit diaphragm protein densin using a previously described antibody (Ahola H, Heikkilä, Aström E, et al. A novel protein, densin, expressed by glomerular podocytes. *J Am Soc Nephrol.* 2003; 14(7):1731–1737.

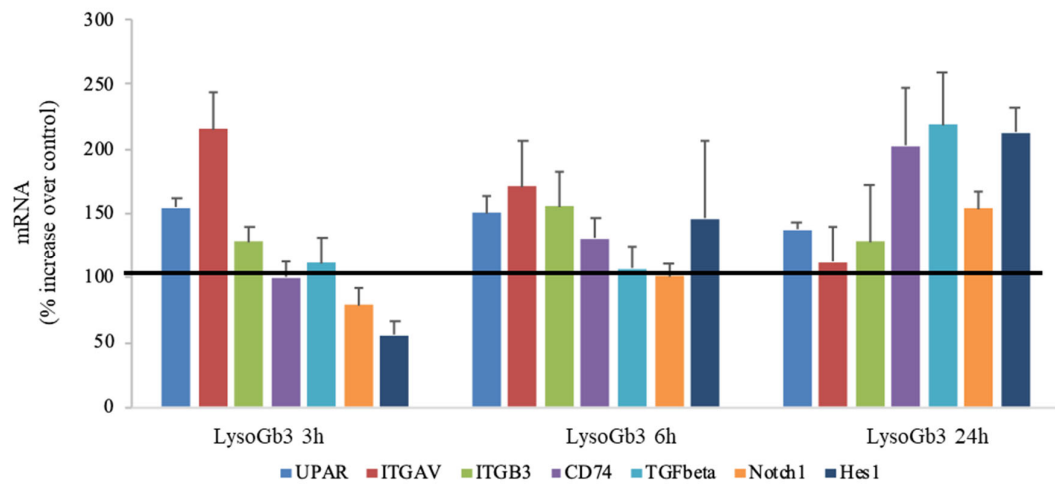


Figure S2. Time course of gene expression in podocytes in response to lyso-Gb3. The Figure present data shown in Figure 3, with SEM bars added.