

Supplementary data:

Kaplan Meier survival-without-recurrence curves (Figures S1–S5) for each of the five variables

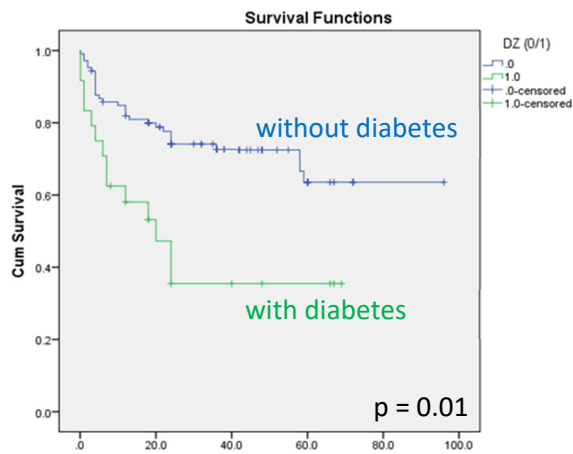


Figure S1. Kaplan Meier for DM (green) vs without it (blue) (green).

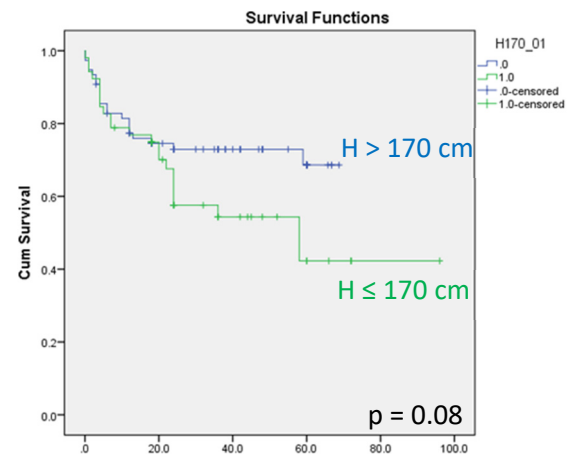


Figure S2. Kaplan Meier for height > 170cm (blue) vs < 170cm (green).

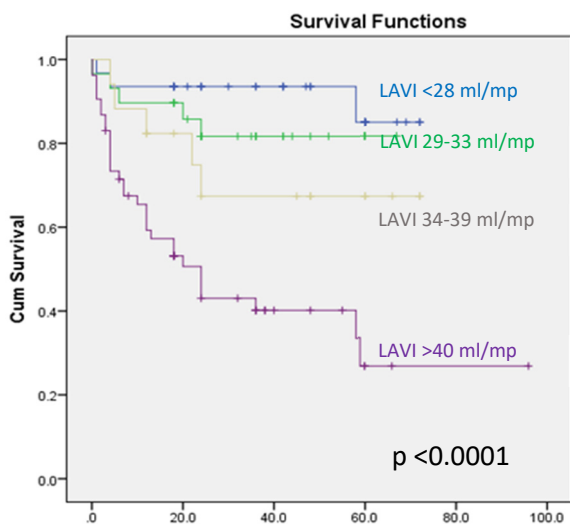


Figure S3. Kaplan Meier for different categories of LAVI (Vol-AS = left atrial volume indexed)

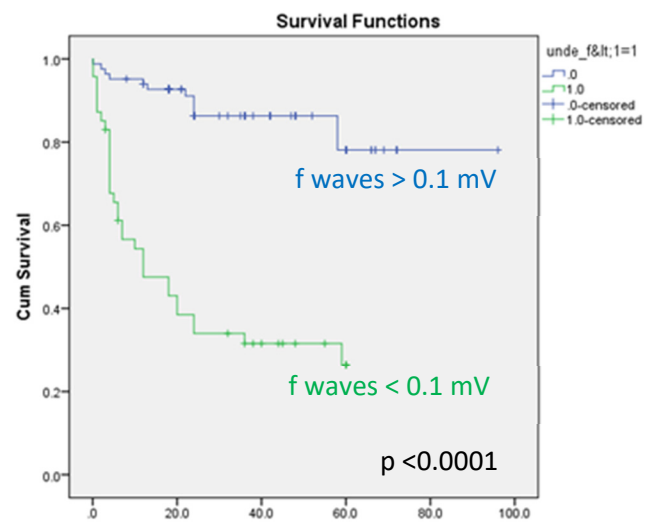


Figure S4. Kaplan Meier for f waves small (green) vs large (blue).

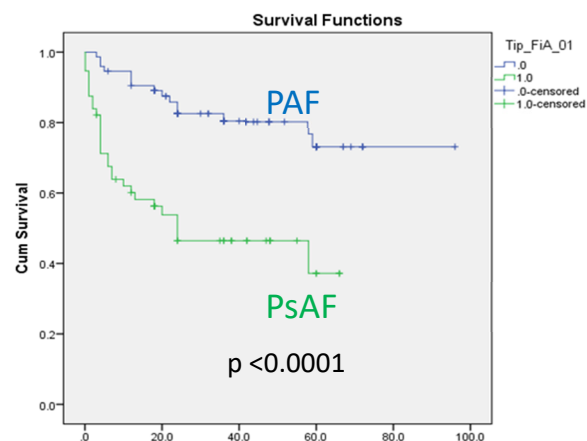


Figure S5: Kaplan Meier paroxysmal AF (blue) vs persistent AF (green)

The cutoff value is 5.875 as shown in the right part of the table below (VAT-DIF is the abbreviation in romanian for VAT-DHF)

Coordinates of the Curve			Coordinates of the Curve		
Test Result Variable(s): CHADS-VASC2			Test Result Variable(s): VAT-DIF		
Positive if Less Than or Equal To*	Sensitivity	1 - Specificity	Positive if Less Than or Equal To*	Sensitivity	1 - Specificity
-1.000	.000	.000	-1.0000	.000	.000
.500	.327	.181	.5000	.129	.000
1.500	.639	.398	1.1250	.271	.045
2.500	.864	.627	1.6250	.341	.045
3.500	.946	.831	2.1250	.376	.045
4.500	.966	.940	2.3750	.424	.045
5.500	.993	.940	2.7500	.435	.045
6.500	1.000	.988	3.1250	.447	.045
8.000	1.000	1.000	3.3750	.529	.045
			3.6250	.576	.091
			3.8750	.635	.136
			4.1250	.647	.136
			4.3750	.682	.159
			4.6250	.718	.159
			5.0000	.753	.159
			5.3750	.776	.205
			5.6250	.800	.205
			5.8750	.871	.250
			6.1250	.871	.273
			6.3750	.882	.295
			6.6250	.906	.318
			7.0000	.929	.432
			7.3750	.929	.455
			7.6250	.929	.500
			8.2500	.953	.568
			9.2500	.988	.659
			10.2500	1.000	.909
			11.7500	1.000	1.000

Coordinates of the Curve		
Test Result Variable(s): APPLE		
Positive if Less Than or Equal To*	Sensitivity	1 - Specificity
-1.00	.000	.000
.50	.500	.143
1.50	.750	.381
2.50	.932	.571
3.50	1.000	.810
4.50	1.000	.952
6.00	1.000	1.000