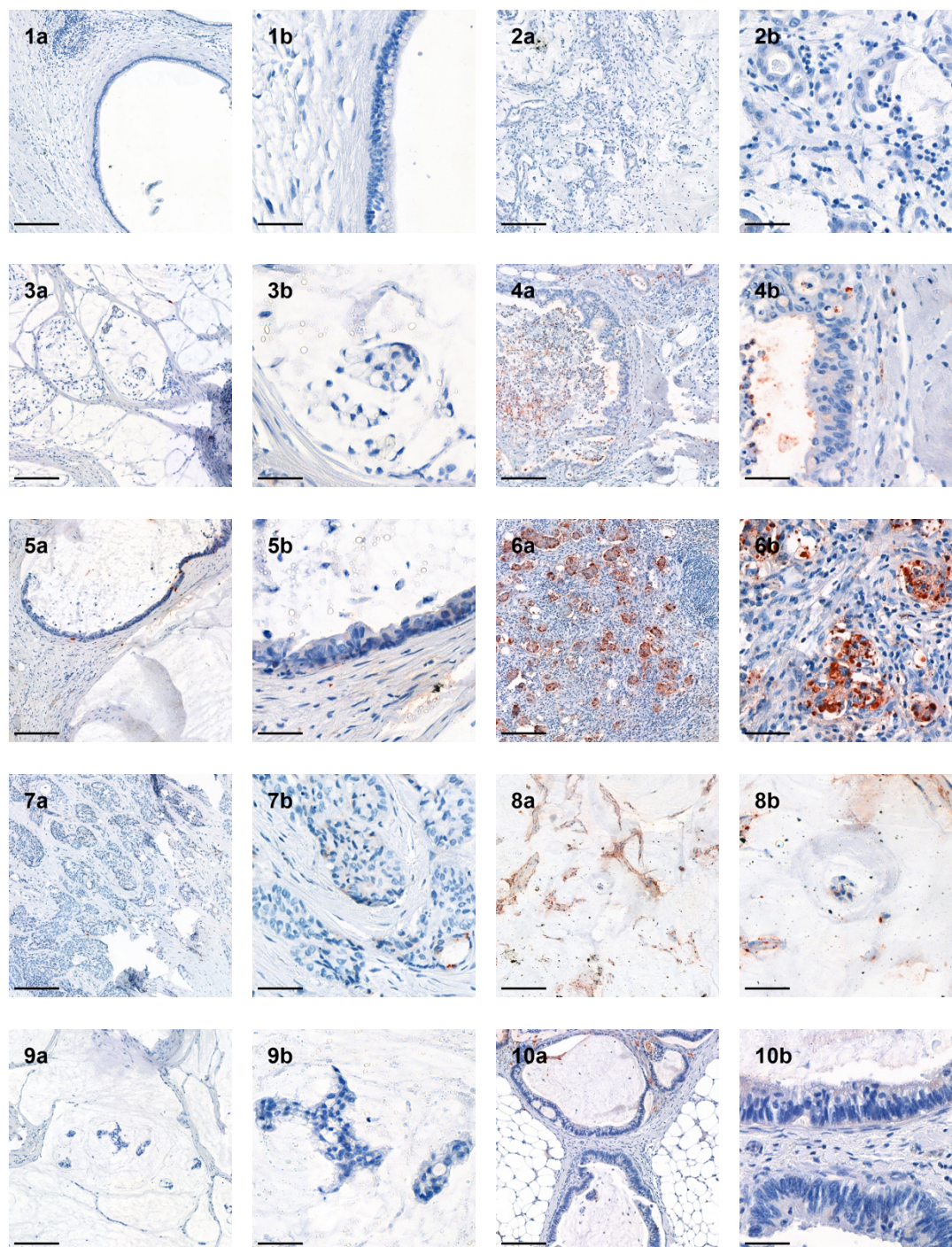


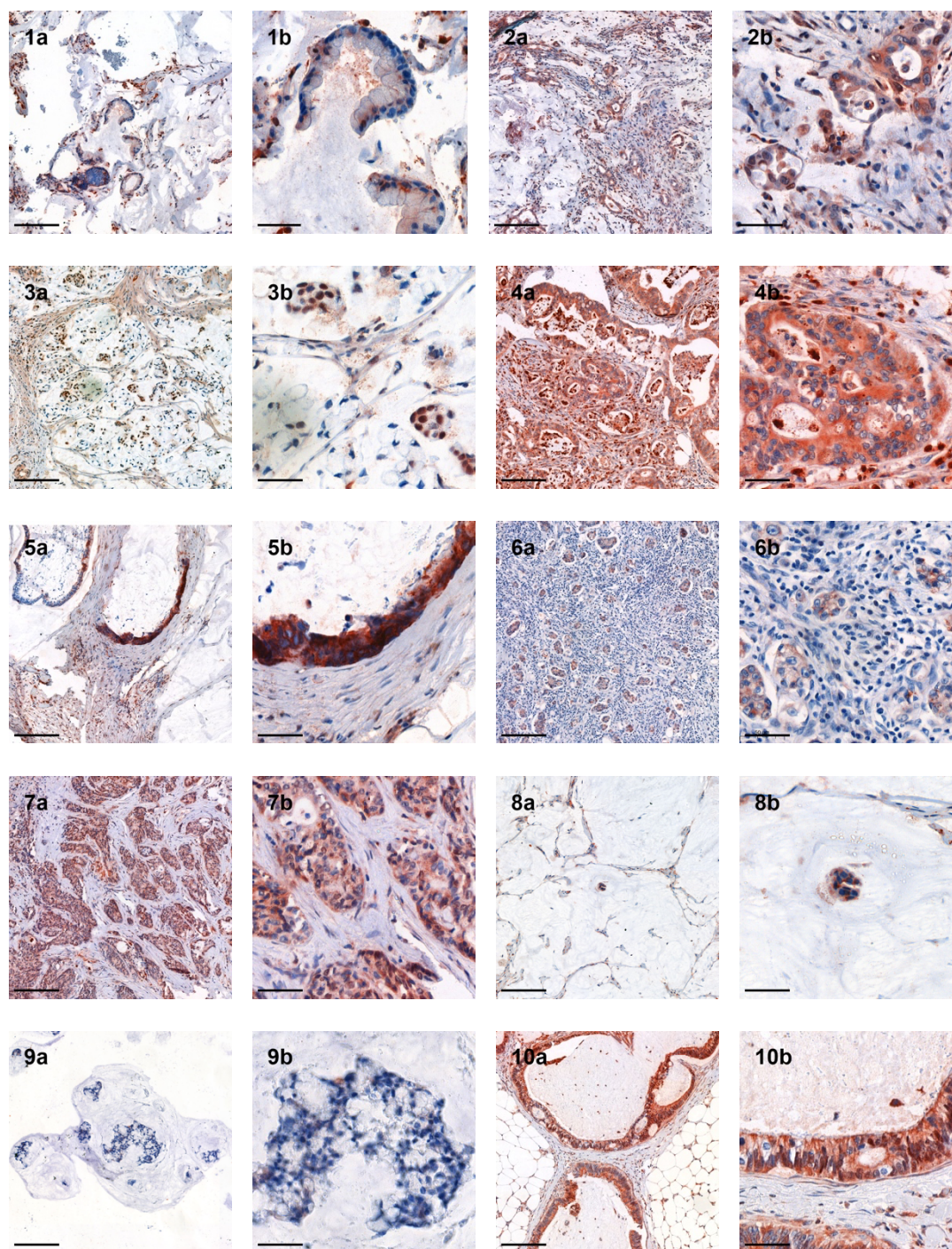
SUPPLEMENTARY INFORMATION

Supplementary Figure S1



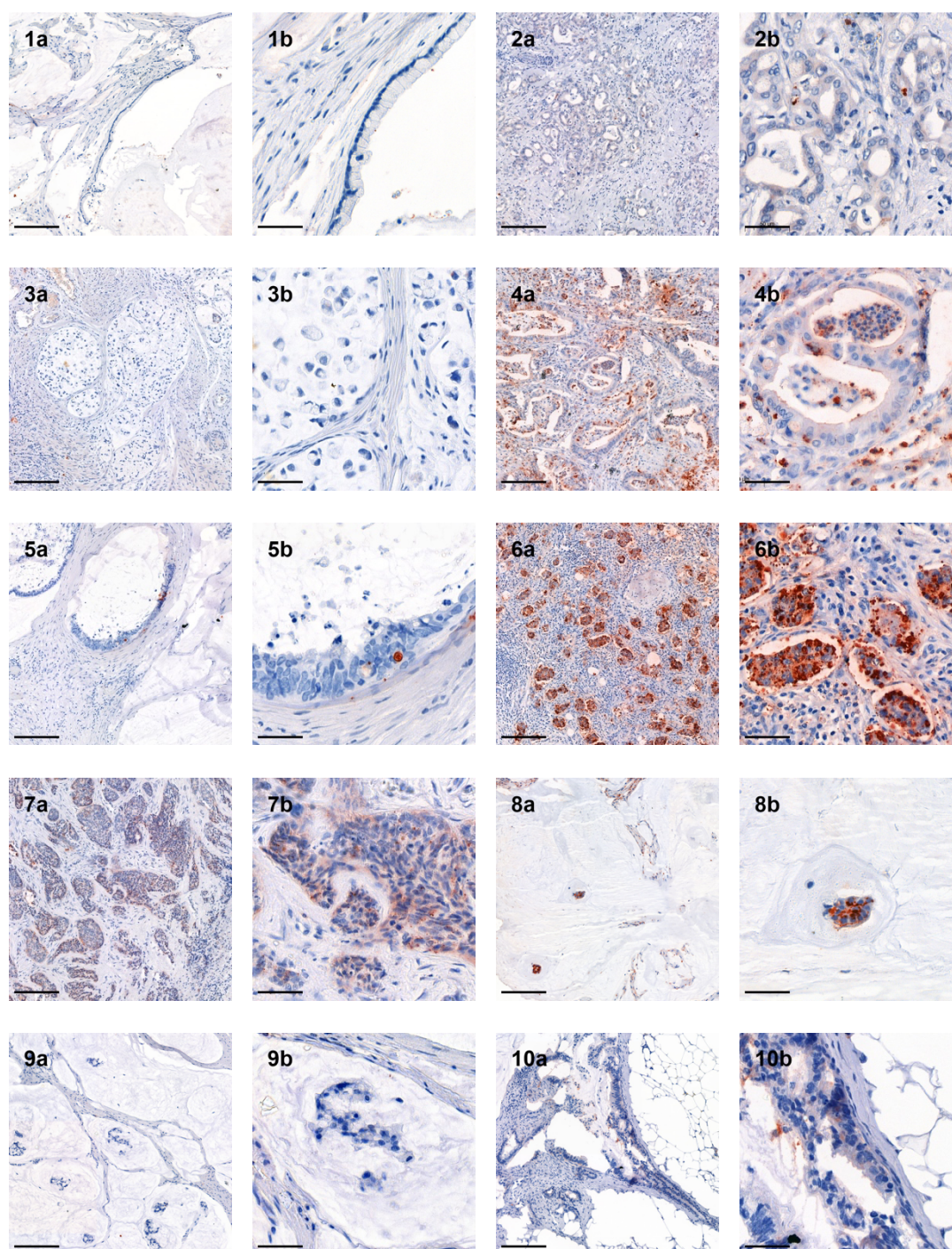
Supplementary Figure S1: Immunohistochemistry for *GPR 4*. The number in each slide corresponds to the patient number (compare also Table 1). “a” represents a 10-fold magnification (scale bar 200 μm) and “b” a 40-fold magnification (scale bar 50 μm).

Supplementary Figure 2



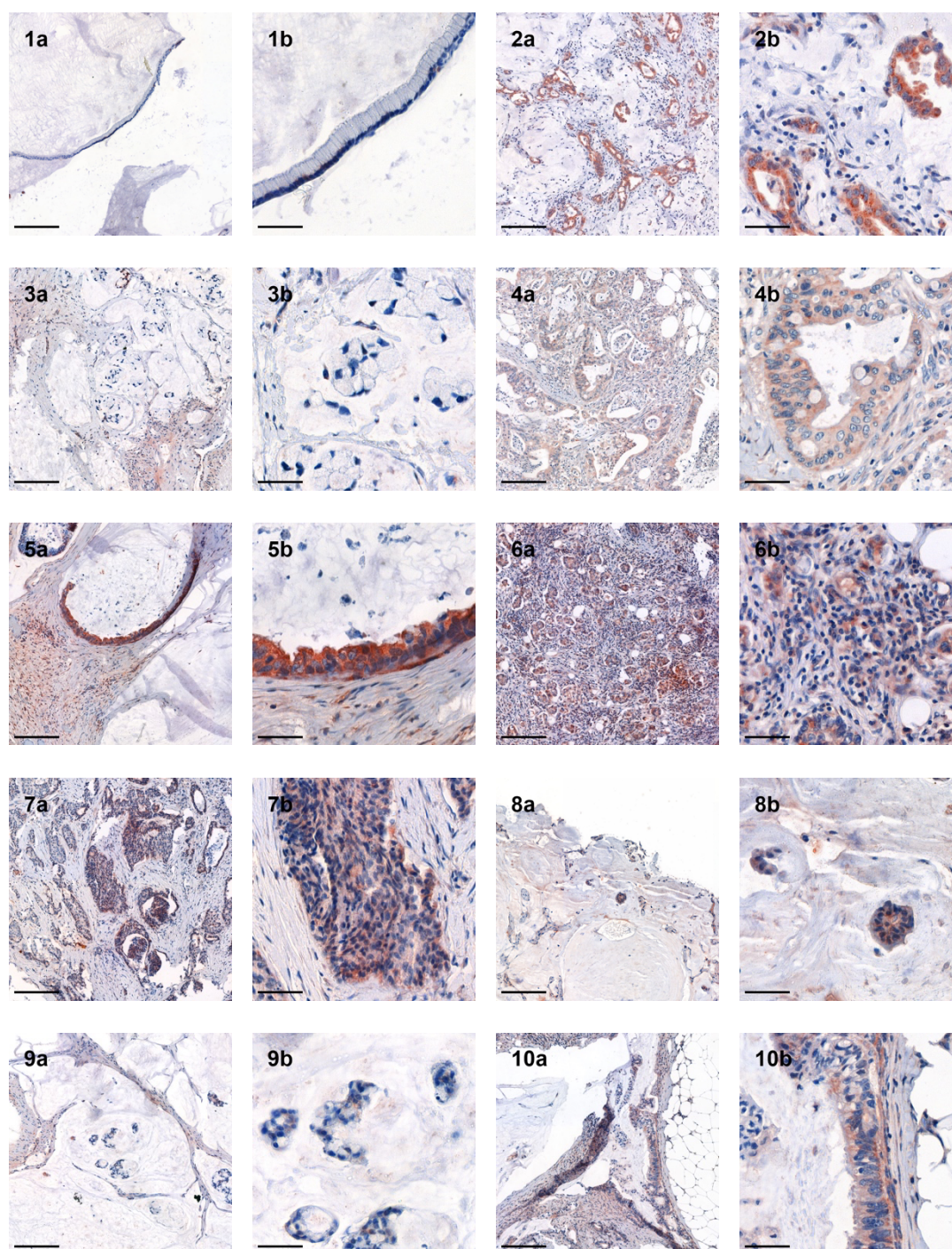
Supplementary Figure S2: Immunohistochemistry for *GPR 65*. The number in each slide corresponds to the patient number (compare also Table 1). “a” represents a 10-fold magnification (scale bar 200 μ m) and “b” a 40-fold magnification (scale bar 50 μ m).

Supplementary Figure S3



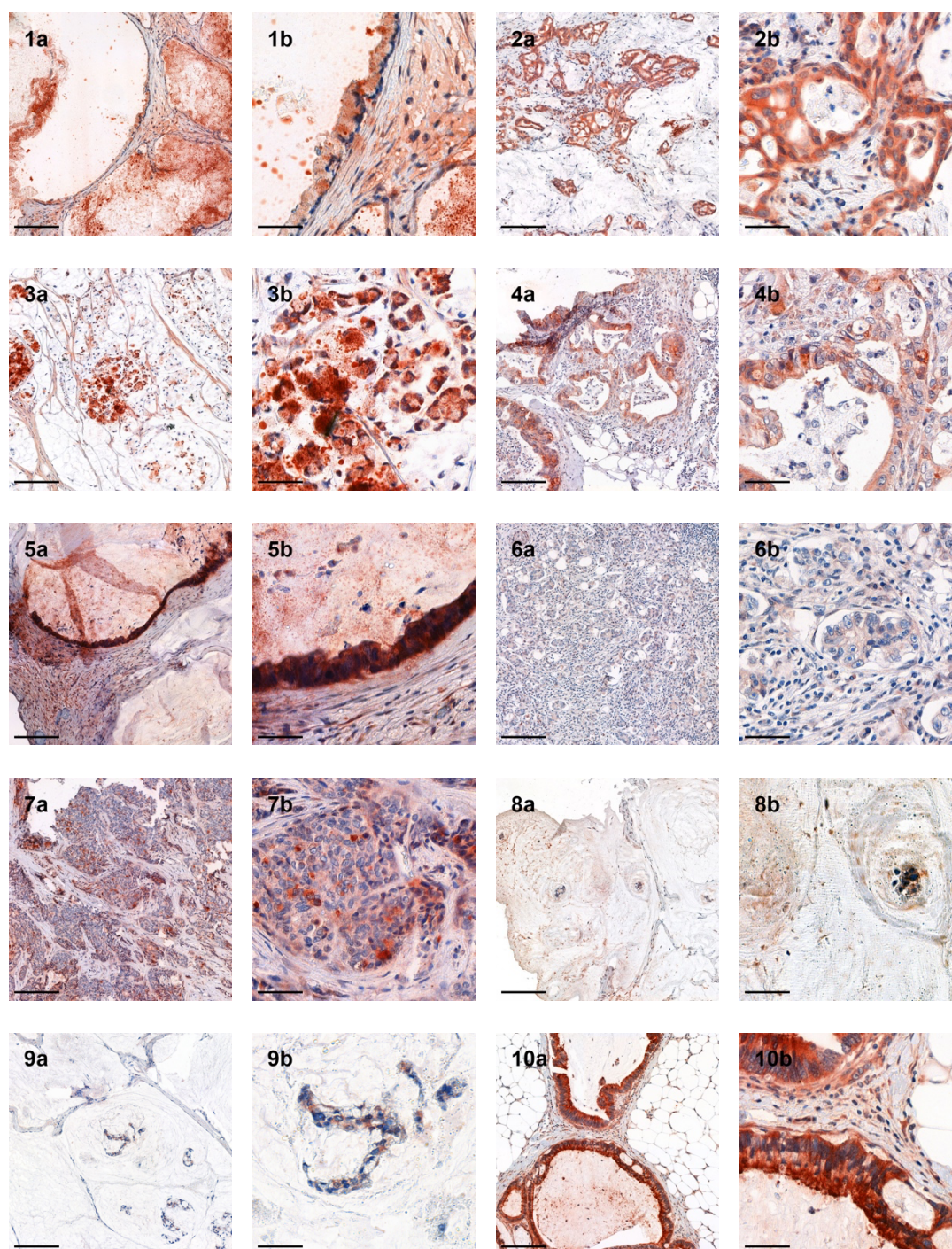
Supplementary Figure S3: Immunohistochemistry for *GPR 68*. The number in each slide corresponds to the patient number (compare also Table 1). “a” represents a 10-fold magnification (scale bar 200 μm) and “b” a 40-fold magnification (scale bar 50 μm).

Supplementary Figure S4



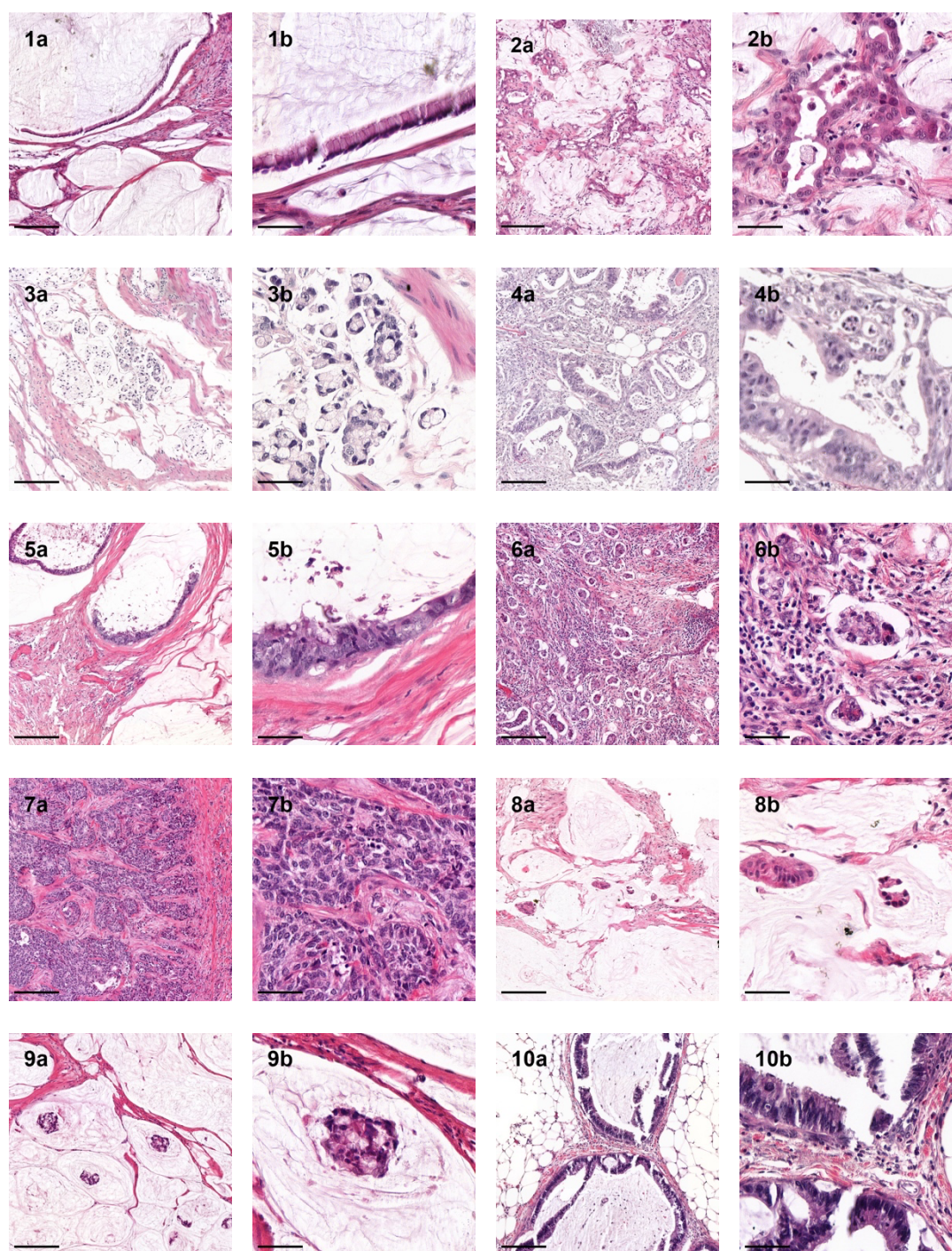
Supplementary Figure S4: Immunohistochemistry for *GPR 132*. The number in each slide corresponds to the patient number (compare also Table 1). “a” represents a 10-fold magnification (scale bar 200 μ m) and “b” a 40-fold magnification (scale bar 50 μ m).

Supplementary Figure S5



Supplementary Figure S5: Immunohistochemistry for *GPR 151*. The number in each slide corresponds to the patient number (compare also Table 1). “a” represents a 10-fold magnification (scale bar 200 µm) and “b” a 40-fold magnification (scale bar 50 µm).

Supplementary Figure S6



Supplementary Figure S6: *HE* staining. The number in each slide corresponds to the patient number (compare also Table 1). “a” represents a 10-fold magnification (scale bar 200 μm) and “b” a 40-fold magnification (scale bar 50 μm).