

**Table S1.** Linear mixed model regression for global health status difference adjusted to baseline.

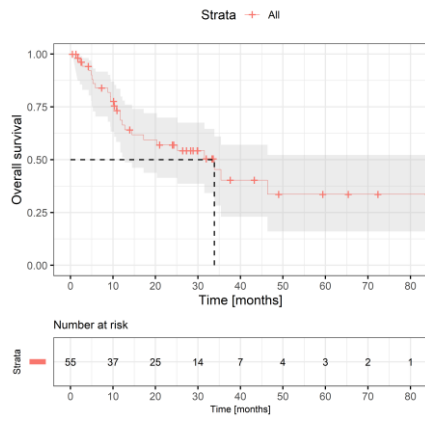
	Estimate	Lower CL	Upper CL	<i>p</i> -Value
Tumor stage: [1–2]	0	-	-	-
Tumor stage: [3–4]	12.403	-7.982	32.788	0.225
Gender: Man	0	-	-	
Gender: Woman	-6.486	-25.744	12.773	0.499
Age	0.959	0.072	1.846	0.035
Interpretation: For two patients of the same age and gender and with a tumor in stage 1–2 and 3–4, respectively, the self-reported global health status score is ca. 12.4 points higher for the patient with a tumor in stage 3–4 compared to the patient with a tumor in stage 1–2.				

**Table S2.** Linear mixed model regression for pain in the mouth difference adjusted to baseline.

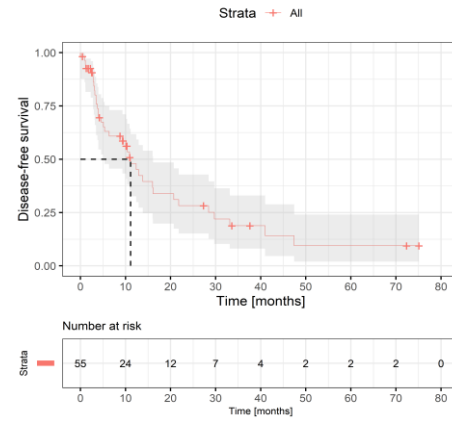
	Estimate	Lower CL	Upper CL	<i>p</i> -Value
Tumor stage: [1–2]	0	-	-	-
Tumor stage: [3–4]	-13.505	-33.728	6.717	0.184
Gender: Man	0	-	-	
Gender: Woman	6.877	-12.124	25.878	0.467
Age	-0.872	-1.725	-0.019	0.045
Interpretation: For two patients of the same age and gender and with a tumor in stage 1–2 and 3–4, respectively, the self-reported pain in the mouth score is ca. 13.5 points lower for the patient with a tumor in stage 3–4 compared to the patient with a tumor in stage 1–2.				

**Table S3.** Linear mixed model regression for swallowing difference adjusted to baseline.

	Estimate	Lower CL	Upper CL	<i>p</i> -Value
Tumor stage: [1–2]	0	-	-	-
Tumor stage: [3–4]	-1.102	-19.758	17.553	0.905
Gender: Man	0	-	-	
Gender: Woman	-8.454	-25.893	8.984	0.332
Age	-0.315	-1.105	0.476	0.424
Interpretation: For two patients of the same age and gender and with a tumor in stage 1–2 and 3–4, respectively, the self-reported swallowing function score is ca. 1 points higher for the patient with a tumor in stage 3–4 compared to the patient with a tumor in stage 1–2.				



(a)



(b)

**Figure S1** (a) Estimated overall survival of all patients, median overall survival 33.9 months. (b) Estimated disease-free survival of all patients, median disease-free survival 11.1 months