

Table S1. Tumor-board recommendation of adjuvant (after resection) or palliative chemotherapy.

Group	Total (%) N = 863	Chemotherapy (%) N = 797	No Chemotherapy (%) N = 28	Unknown (%) N = 38
Resected	464 (53.8)	408 (47.3)	18 (2.1)	38 (4.4)
Locally advanced	86 (10.0)	80 (9.3)	6 (0.7)	0 (0.0)
Metastasized	313 (36.2)	309 (35.8)	4 (0.4)	0 (0.0)

Table S2. Descriptive statistics of study cohort with respect to active smoking.

Factor	Overall (%) N = 512 ¹	Active Smoking (%) N = 215	No Smoking (%) N = 297
Age (years), median	66 (28 – 94) (67 64 64) ²	63 (34 – 85) (63 62 63) ²	67 (28 – 89) (69 66 65) ²
Sex			
Female	215 (42.0) (128 19 68) ³	74 (14.5) (29 10 35) ³	141 (27.5) (99 9 33) ³
Male	297 (58.0) (164 32 101) ³	141 (27.5) (67 14 60) ³	156 (30.5) (97 18 41) ³
ECOG			
≥ 2	65 (12.7) (8 13 44) ³	35 (6.8) (5 5 25) ³	30 (5.9) (3 8 19) ³
< 2	260 (50.8) (135 30 95) ³	115 (22.5) (46 13 56) ³	145 (28.3) (89 17 39) ³
Unknown	187 (36.5) (149 8 30) ³	65 (12.7) (45 6 14) ³	122 (23.8) (104 2 16) ³
Stage			
Resected	292 (57.0)	96 (18.8)	196 (38.2)
Locally advanced	51 (10.0)	24 (4.7)	27 (5.3)
Metastasized	169 (33.0)	95 (18.6)	74 (14.4)
Localization			
Head	291 (56.8)	116 (22.7)	175 (34.1)
Body	50 (9.8)	20 (4.0)	30 (5.8)
Tail	70 (13.7)	30 (5.9)	40 (7.8)
Overlap	29 (5.7)	15 (2.9)	14 (2.8)
Not specified	72 (14.0)	34 (6.6)	38 (7.4)
Treatment			
Resection			
R0	195 (38.1)	68 (13.3)	127 (24.8)
R1	87 (16.9)	24 (4.7)	63 (12.2)
R2	2 (0.4)	0 (0.0)	2 (0.4)
RX	8 (1.6)	4 (0.8)	4 (0.8)
Palliative Treatment	220 (43.0)	119 (23.2)	101 (19.8)

¹ in the case of 351 out of 863 patients smoking status was unknown; ² average age of sub-groups (resected || locally advanced || metastasized); ³ absolute number of cases in sub-groups (resected || locally advanced || metastasized).

Table S3. Descriptive statistics of study cohort with respect to BMI.

Factor	Overall (%) N = 863	BMI < 22 (%) N = 226	BMI ≥ 22 (%) N = 637
Age (years), median	66 (28 – 94) (67 68 66) ²	66 (28 – 85) (65 63 61) ²	69 (37 – 94) (67 68 66) ²

Sex			
Female	377 (43.7) (206 35 136) ³	126 (14.6) (61 14 51) ³	251 (29.1) (145 21 85) ³
Male	486 (56.3) (258 51 177) ³	100 (11.6) (46 11 43) ³	386 (44.7) (212 40 134) ³
ECOG			
≥ 2	123 (14.3) (13 25 85) ³	34 (3.9) (3 7 24) ³	89 (10.4) (10 18 61) ³
< 2	418 (48.4) (203 46 169) ³	113 (13.1) (55 9 49) ³	305 (35.3) (148 37 120) ³
Unknown	322 (37.3) (248 15 59) ³	79 (9.2) (49 9 21) ³	243 (28.1) (199 6 38) ³
Stage			
Resected	464 (53.7)	107 (12.4)	357 (41.3)
Locally advanced	86 (10.0)	25 (2.9)	61 (7.1)
Metastasized	313 (36.3)	94 (10.9)	219 (25.4)
Localization			
Head	494 (57.3)	121 (14.1)	373 (43.2)
Body	78 (9.0)	18 (2.0)	60 (7.0)
Tail	117 (13.6)	33 (3.7)	84 (9.9)
Overlap	45 (5.2)	13 (1.5)	32 (3.7)
Not specified	129 (14.9)	41 (4.8)	88 (10.1)
Treatment			
Resection			
R0	304 (35.2)	71 (8.2)	233 (27.0)
R1	139 (16.1)	32 (3.7)	107 (12.4)
R2	2 (0.2)	0 (0.0)	2 (0.2)
RX	19 (2.2)	13 (1.5)	6 (0.7)
Palliative Treatment	399 (46.3)	110 (12.7)	289 (33.6)

² average age of sub-groups (resected || locally advanced || metastasized); ³ absolute number of cases in sub-groups (resected || locally advanced || metastasized); BMI – body mass index (kg/m²).

Table S4. Descriptive statistics of study cohort with respect to GFR.

Factor	Overall (%) N = 863	GFR < 90 (%) N = 423	GFR ≥ 90 (%) N = 440
Age (years), median	67 (28 – 94) (67 68 66) ²	70 (35 – 94) (71 71 69) ²	62 (28 – 84) (63 62 60) ²
Sex			
Female	377 (43.7) (206 35 136) ³	240 (27.8) (133 17 90) ³	137 (15.9) (73 18 46) ³
Male	486 (56.3) (258 51 177) ³	183 (21.2) (96 25 62) ³	303 (35.1) (162 26 115) ³
ECOG			
≥ 2	123 (14.3) (13 25 85) ³	66 (7.7) (7 13 46) ³	57 (6.6) (6 12 39) ³
< 2	418 (48.4) (203 46 169) ³	205 (23.8) (97 24 84) ³	213 (24.6) (106 22 85) ³
Unknown	322 (37.3) (248 15 59) ³	152 (17.6) (125 5 22) ³	170 (19.7) (123 10 37) ³
Stage			
Resected	464 (53.7)	229 (26.5)	235 (27.2)

Locally advanced	86 (10.0)	42 (4.9)	44 (5.1)
Metastasized	313 (36.3)	152 (17.6)	161 (18.7)
Localization			
Head	494 (57.3)	240 (27.8)	254 (29.4)
Body	78 (9.0)	40 (4.6)	38 (4.4)
Tail	117 (13.6)	68 (7.9)	49 (5.7)
Overlap	45 (5.2)	21 (2.4)	24 (2.8)
Not specified	129 (14.9)	54 (6.3)	75 (8.7)
Treatment			
Resection			
R0	304 (35.2)	155 (18.0)	149 (17.2)
R1	139 (16.1)	68 (7.9)	71 (8.2)
R2	2 (0.2)	1 (0.1)	1 (0.1)
RX	19 (2.2)	7 (0.8)	12 (1.4)
Palliative Treatment	399 (46.3)	192 (22.2)	207 (24.1)

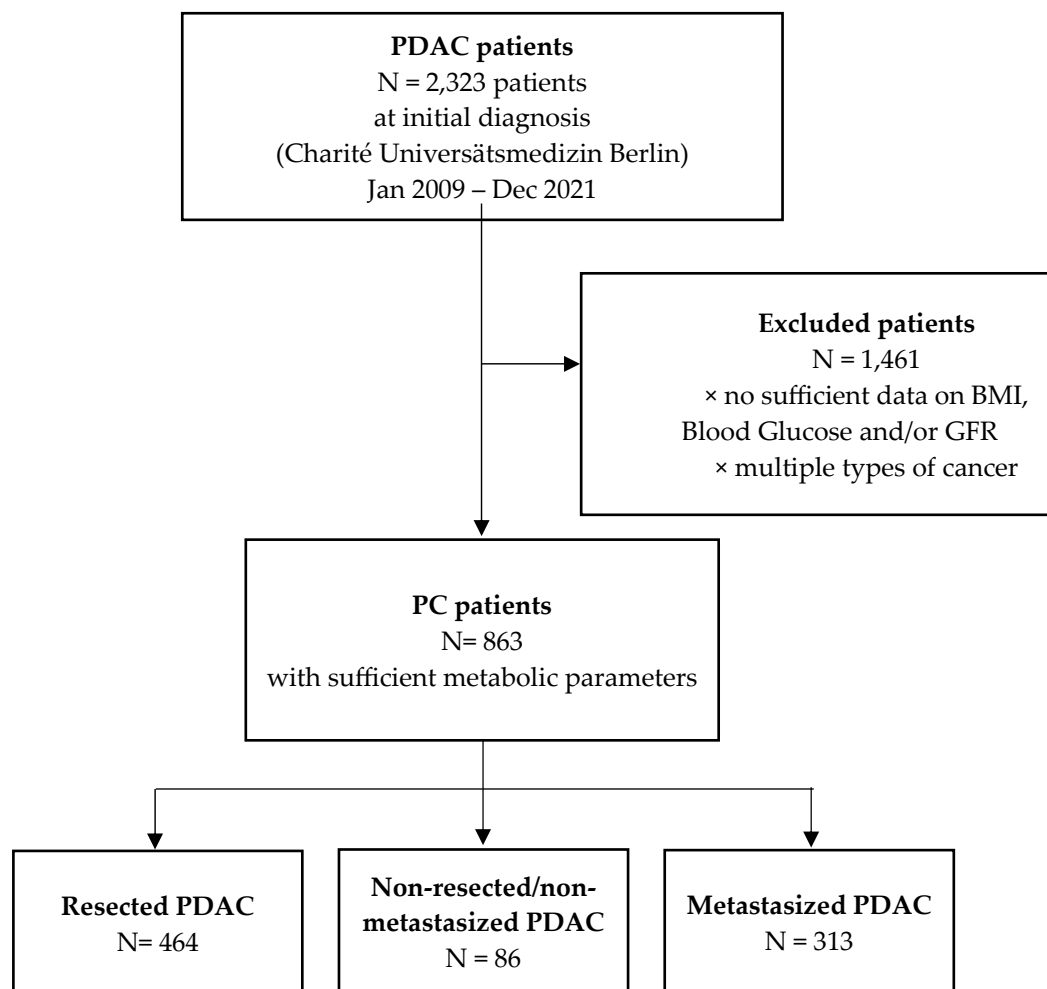
² average age of sub-groups (resected||locally advanced||metastasized); ³ absolute number of cases in sub-groups (resected||locally advanced||metastasized); GFR - glomerular filtration rate ((ml/min/1.37m²).

Table S5. Univariate and multivariate logistic regression analyses for mOS.

Factor	Univariate analysis				Multivariate analysis			
	N	HR	95% CI	P-value	HR	95% CI	P-value	
Age (years)								
≥ 65	503							
< 65	360	0.7	0.59 – 0.83	< 0.001	1.8	1.4 – 2.4	< 0.001	
Sex								
Female	377							
Male	486	1.3	1.1 - 1.5	< 0.001	2.0	1.5 – 2.7	< 0.001	
Tumor stage								
Resected	464							
Locally advanced	86	1.8	1.4 – 2.3	< 0.001	2.1	1.4 – 3.1	< 0.001	
Metastasized	313	2.6	2.1 – 3.1	< 0.001	2.7	2.1 - 3.7	< 0.001	
Localization								
Head	494							
Body	78	0.89	0.66 – 1.2	0.442	1.0	0.7 - 1.6	0.752	
Tail	117	1.20	0.93 – 1.5	0.155	1.1	0.8 - 1.6	0.561	
Overlap	45	1.56	1.10 – 2.2	0.016	1.2	0.8 – 2.1	0.322	
Not specified	129	1.54	1.24 – 1.9	< 0.001	1.4	1.0 – 2.0	0.033	
CA19-9 (kU/l)								
≥ 300	358							
< 300	390	0.53	0.44 – 0.63	< 0.001	0.6	0.5 – 0.8	0.0005	
Unknown	115							
ECOG								
> 2	123							
0 - 1	418	0.53	0.42 – 0.6	< 0.001	0.6	0.4 – 0.8	0.002	
Unknown	322							
Albumin (g/l)								
≥ 33	345							
< 33	518	1.4	1.2 – 1.7	< 0.001	1.5	0.5 – 0.8	0.0009	
Active Smoking								
Yes	215							
No	297	0.69	0.55 – 0.86	< 0.001	0.7	0.61 - 1.0	0.056	

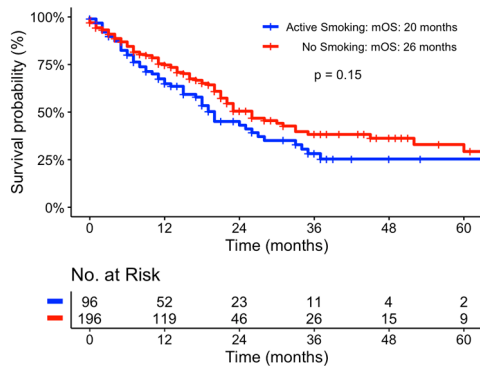
Unknown	351						
BMI							
≥ 22	637						
< 22	226	1.2	1.0 – 1.5	0.018	1.2	0.89 - 1.6	0.250
					0.7 ¹	0.44-1.04 ¹	0.078 ¹
Diabetes							
Yes	308						
No	555	1.0	0.85 – 1.2	0.970	1.1	0.86 - 1.5	0.386
Hypertension							
Yes	507						
No	356	0.91	0.77 – 1.1	0.260	1.2	0.90 – 1.5	0.227
GFR							
≥ 90	440						
< 90	423	1.1	0.97 – 1.3	0.002	1.4	1.0 - 1.8	0.033

¹ multivariate analysis for the resected group only, excluding locally advanced and metastasized pts; BMI – body mass index (kg/m²); GFR – glomerular filtration rate (GFR, ml/min/1.37m²).

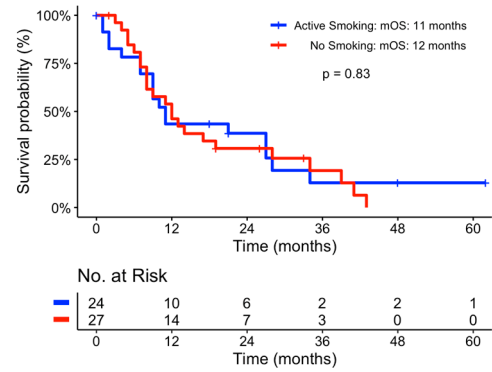


PDAC – pancreatic cancer.

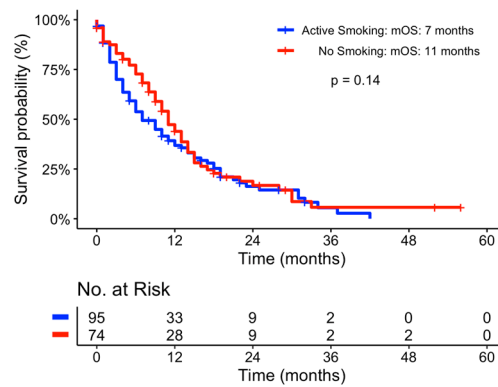
Figure S1. Study flow chart.



(a)

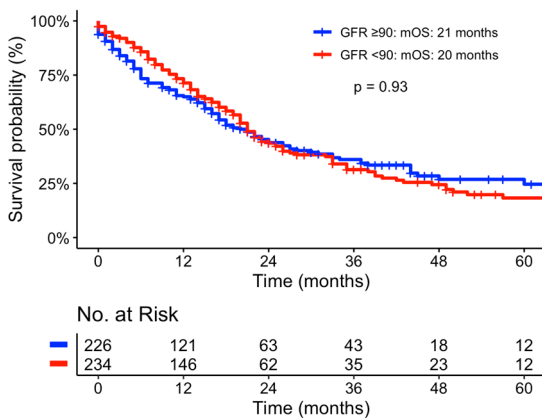


(b)

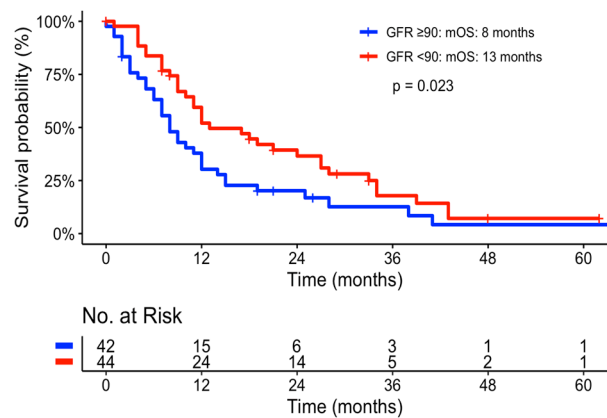


(c)

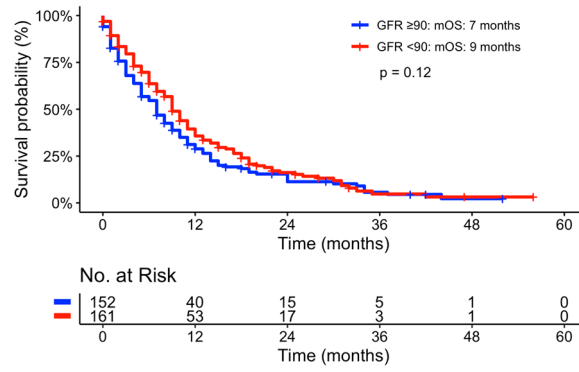
Figure S2. Kaplan-Meier Curves univariate comparison of sub-group analyses of active smoking: (a) resected patients; (b) locally advanced; (c) metastasized patients.



(a)

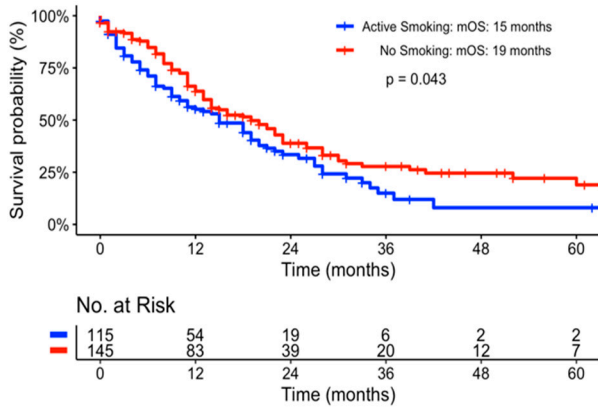


(b)

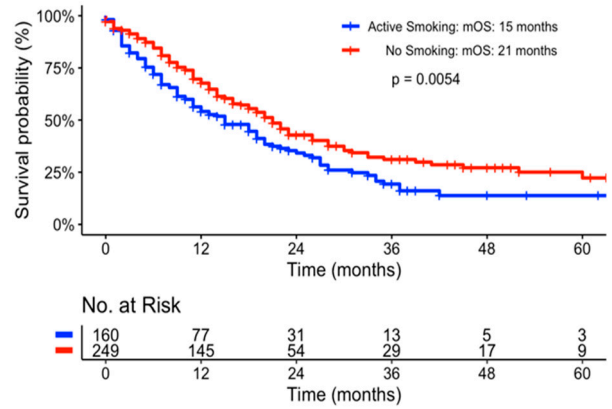


(c)

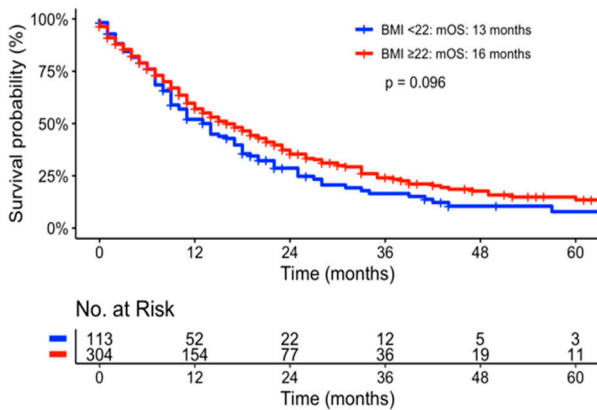
Figure S3. Kaplan-Meier Curves univariate comparison of sub-group analyses of GFR: (a) resected patients; (b) locally advanced; (c) metastasized patients.



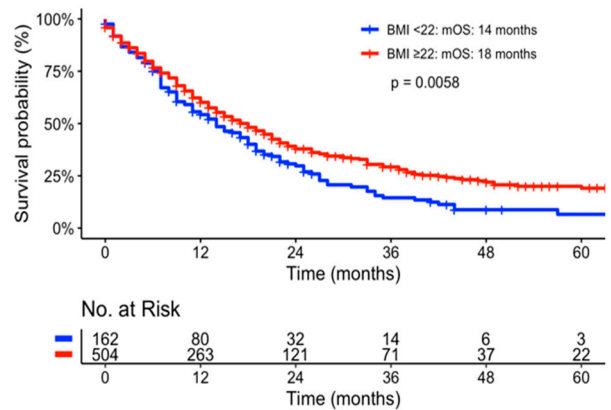
(a)



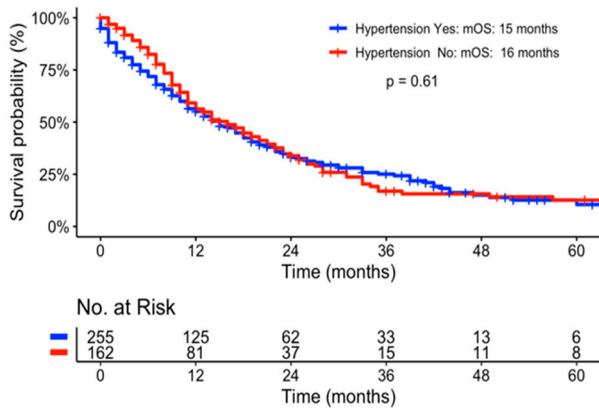
(b)



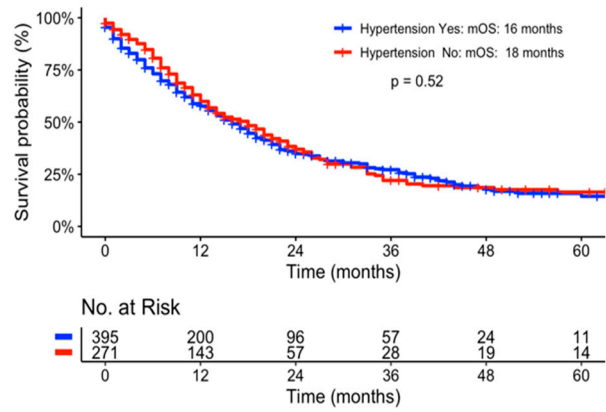
(c)



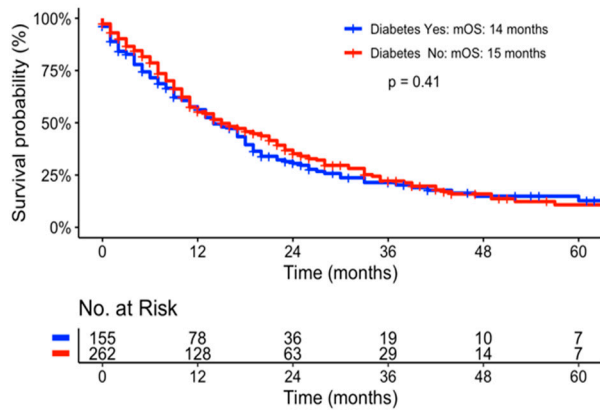
(d)



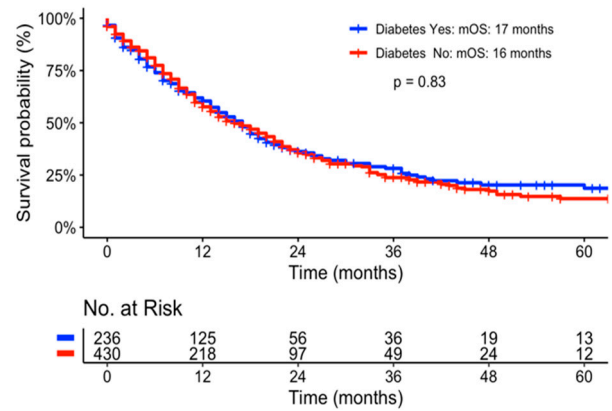
(e)



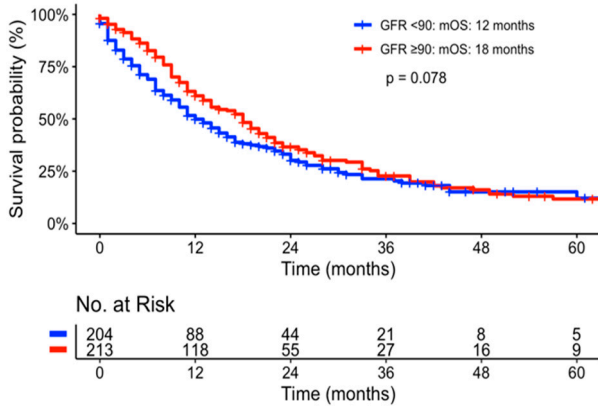
(f)



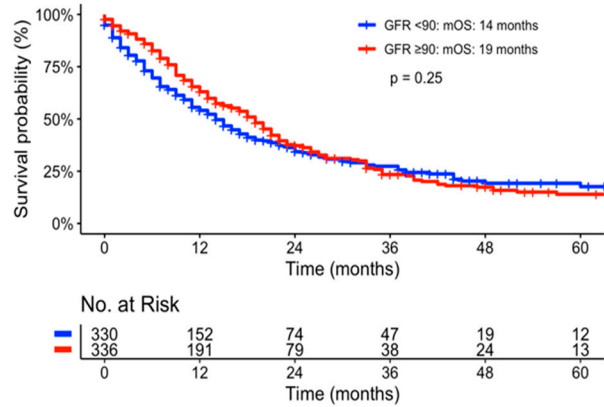
(g)



(h)

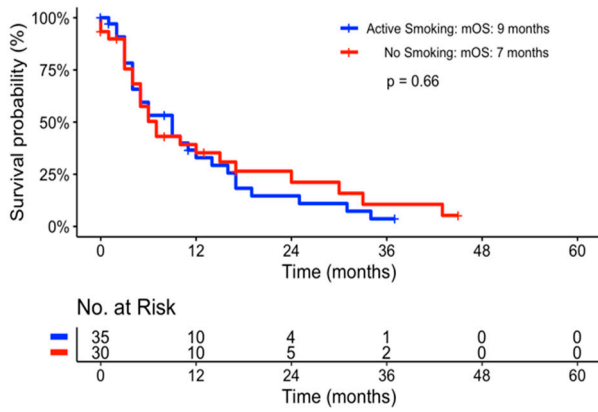


(i)

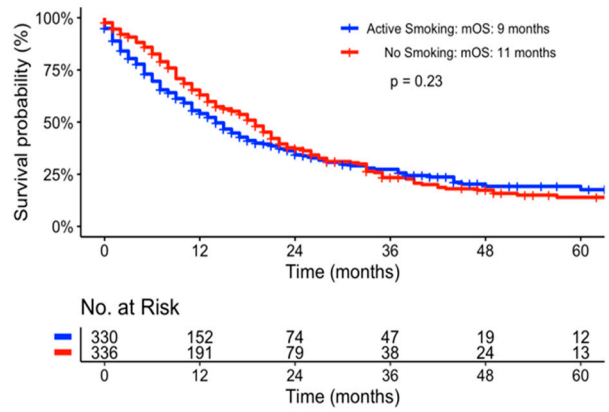


(j)

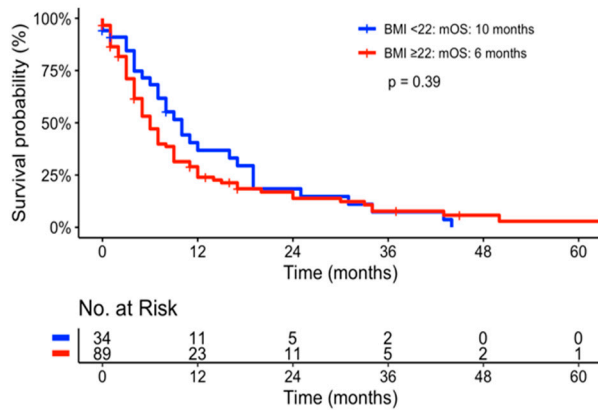
Figure S4. Kaplan-Meier Curves univariate comparison of sub-group analyses for ECOG status 0-1 for non-imputed data using Table S5 of: (a) Smoking; (c) BMI; (e) Hypertension; (g) Diabetes; (i) GFR. Kaplan-Meier Curves univariate comparison of sub-group analyses for ECOG status 0-1 for imputed data using Table 2 of: (b) Smoking; (d) BMI; (f) Hypertension; (h) Diabetes; (j) GFR.



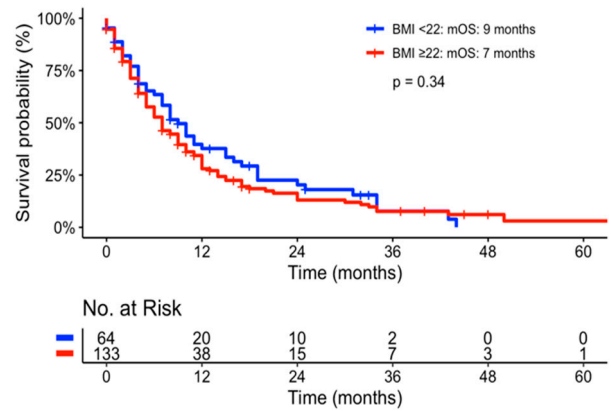
(a)



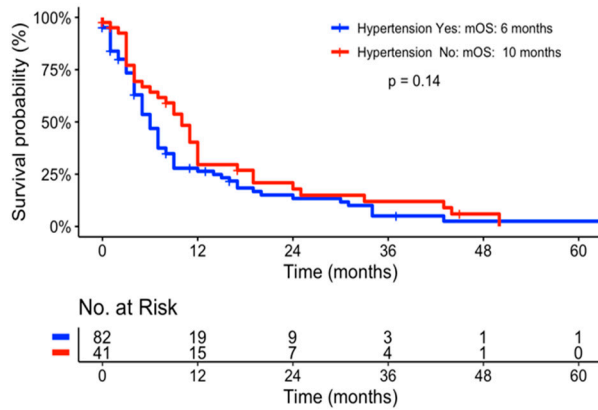
(b)



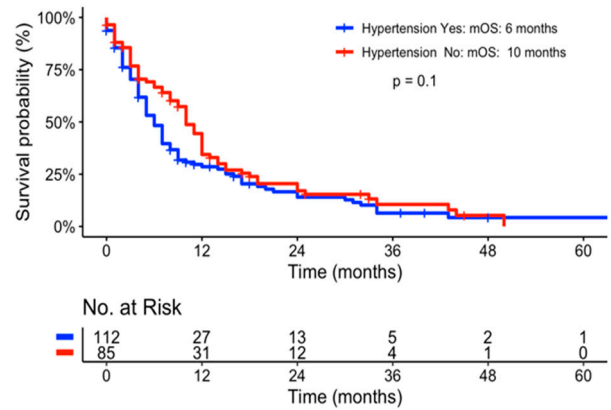
(c)



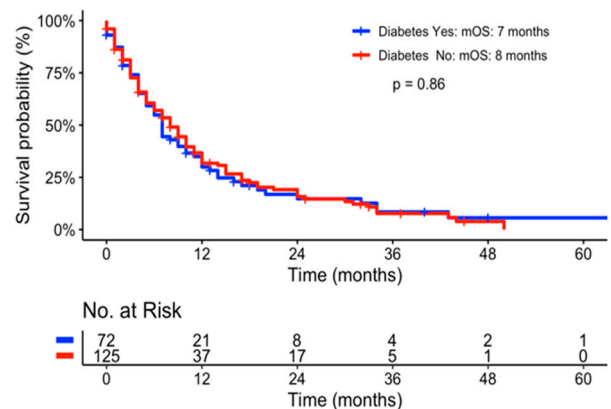
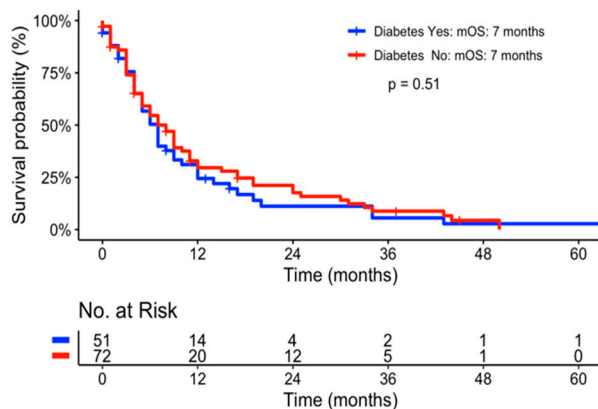
(d)



(e)



(f)



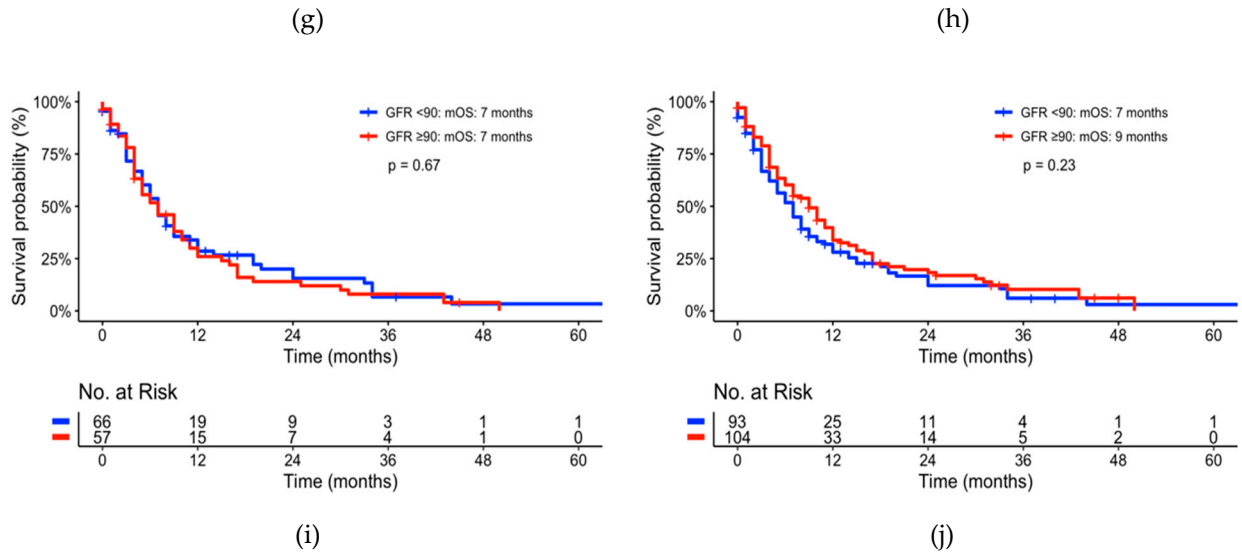


Figure S5. Kaplan-Meier Curves univariate comparison of sub-group analyses for ECOG status ≥ 2 for non-imputed data using Table S5 of: (a) Smoking; (c) BMI; (e) Hypertension; (g) Diabetes; (i) GFR. Kaplan-Meier Curves univariate comparison of sub-group analyses for ECOG status 0-1 for imputed data using Table 2 of: (b) Smoking; (d) BMI; (f) Hypertension; (h) Diabetes; (j) GFR.