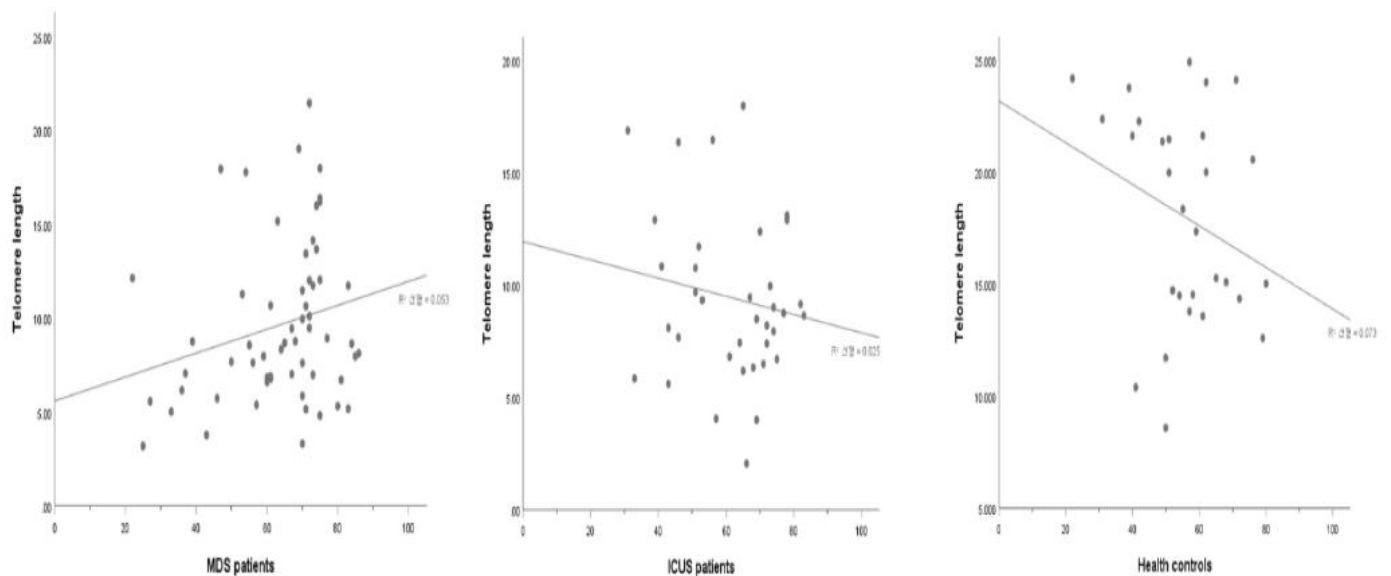




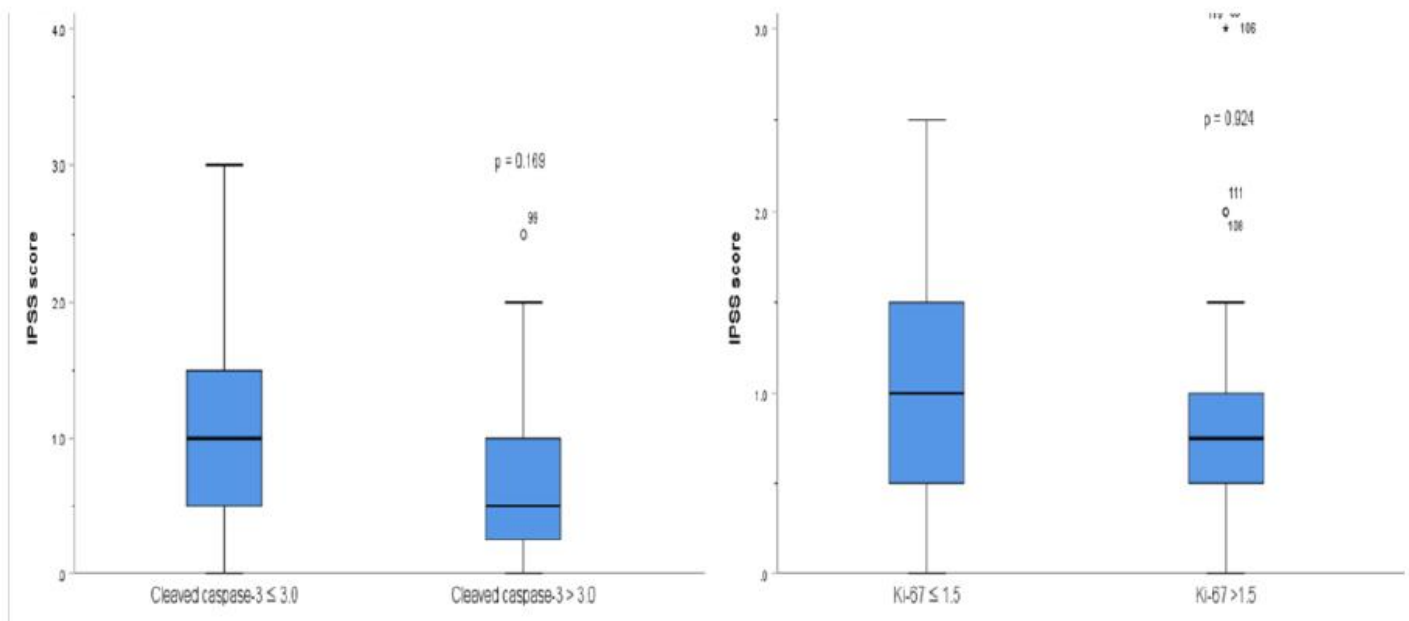
**Table S1.** Patient characteristics in the patients with ICUS ( $n = 37$ ) [5].

Variables	Number of Patients (%)
Age at diagnosis, median (range)	66 (31–83)
Sex	
Male	15 (40.5)
Female	22 (59.5)
Neutropenia ( $ANC < 1800/\text{mm}^3$ )	28 (70.0)
Anemia (Hemoglobin $< 10 \text{ g/dL}$ )	30 (75.0)
Platelets ( $< 100,000/\text{mm}^3$ )	21 (52.5)
Lineage involved of cytopenia	
Uni-lineage	8 (21.6)
Bi-lineage	22 (59.5)
Tri-lineage	7 (18.9)
Grade of cytopenia	
1	5 (13.5)
2	8 (21.6)
3	21 (56.8)
4	3 (8.1)

Abbreviations: ICUS, idiopathic cytopenia of undetermined significance; ANC, absolute neutrophil count.



**Figure S1.** Telomere length according to age.



**Figure S2.** IPSS score according to cleaved caspase-3 and Ki-67. IPSS, International scoring prognostic system.