

Supplementary Materials

Table S1. The number of cases excluded from the study.

| | <35 Group | 35–64 Group | ≥65 Group | Sum Number |
|--|---------------------|--------------------|------------------|-------------------|
| Initial number for screen | 20 | 204 | 266 | 490 |
| Number of cases excluded from the study | | | | |
| Need for support | 0 | 5 | 43 | 48 |
| Body mass index (BMI) ≥35 | 0 | 15 | 7 | 22 |
| History of a major invasive procedure to pelvic cancer | 2 | 132 | 96 | 230 |
| Radiation therapy to the lower limbs or abdomen | 0 | 2 | 3 | 5 |
| Heart failure | 0 | 0 | 2 | 2 |
| Renal failure | 0 | 1 | 1 | 2 |
| Cirrhosis of the liver, | 0 | 1 | 2 | 3 |
| Hypoproteinemia | 0 | 5 | 7 | 12 |
| Deep vein thrombosis | 0 | 2 | 8 | 10 |
| Chronic venous obstruction or venous reflux | 0 | 12 | 26 | 38 |
| Thyroid dermopathy | 0 | 2 | 5 | 7 |
| Other endocrine cause of edema | 0 | 3 | 2 | 5 |
| Drug-induced edema | 1 | 5 | 9 | 15 |
| Arterial and/or venous malformation; | 1 | 4 | 0 | 5 |
| Total number of cases excluded from the study | 4 | 189 | 211 | 404 |
| Total number of cases included into this study | 16 | 15 | 55 | 86 |

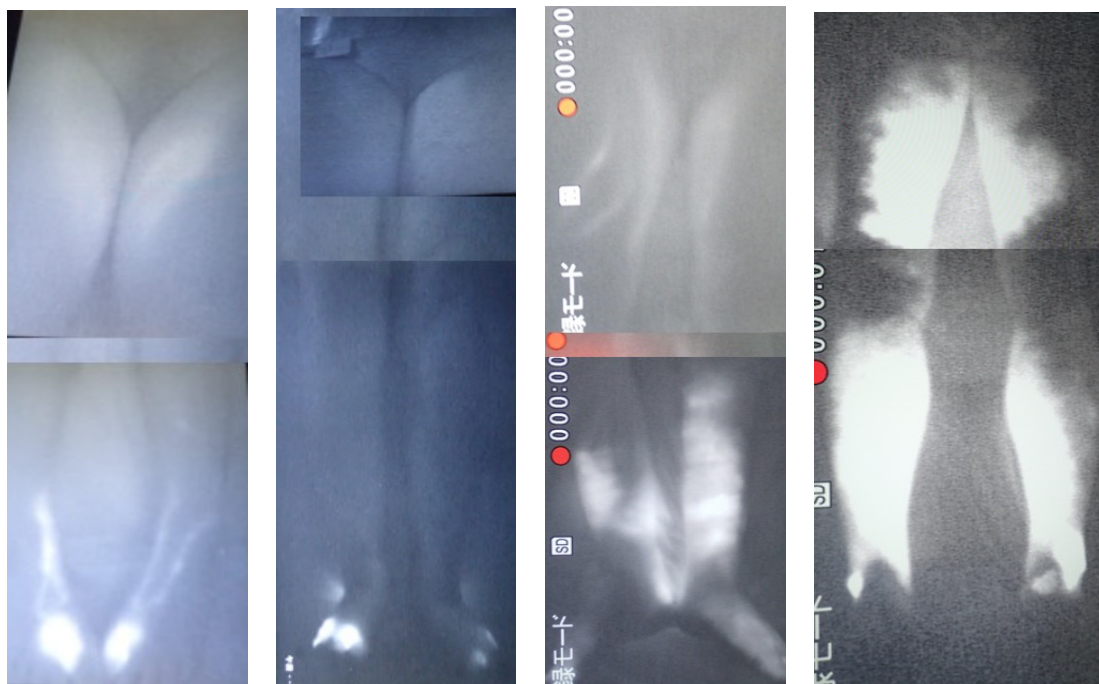


Figure S1. Patterns of age-related primary lymphedema in the lower extremities seen on indocyanine green lymphography.

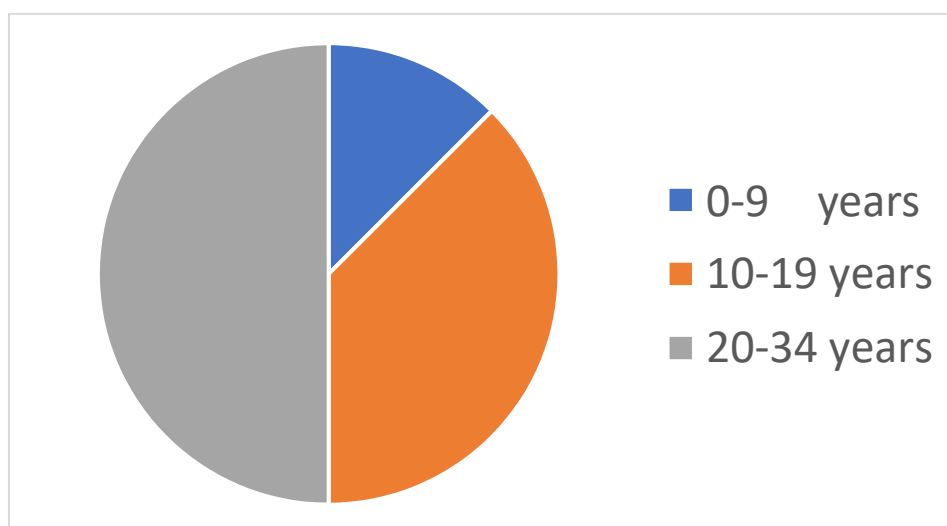


Figure S2. Number of cases divided by its onset age in <35 group.

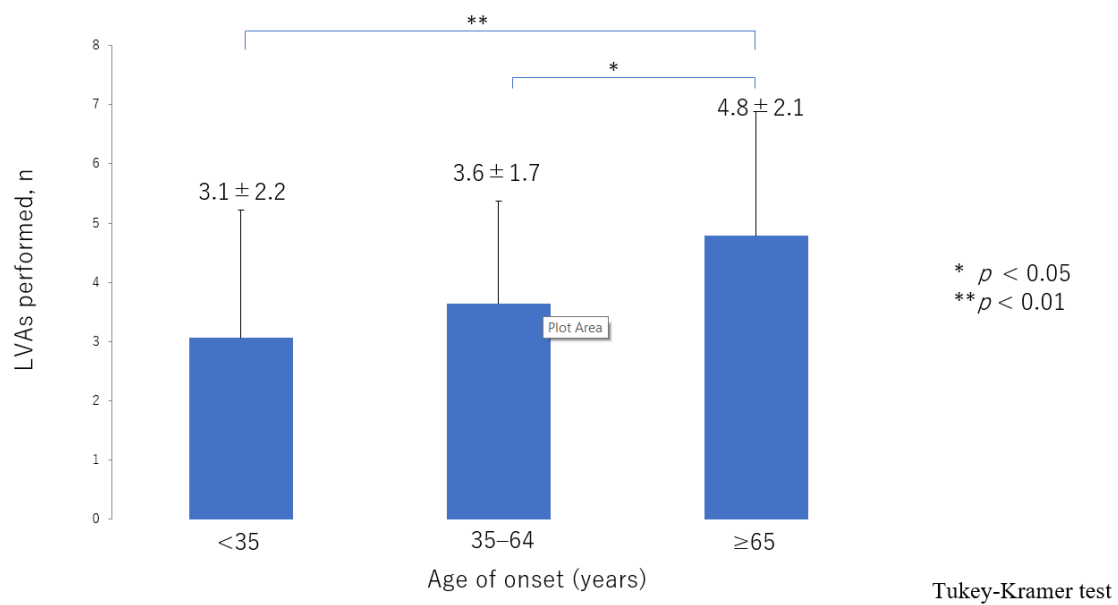


Figure S3. Number of performed LVAs according to age of onset.

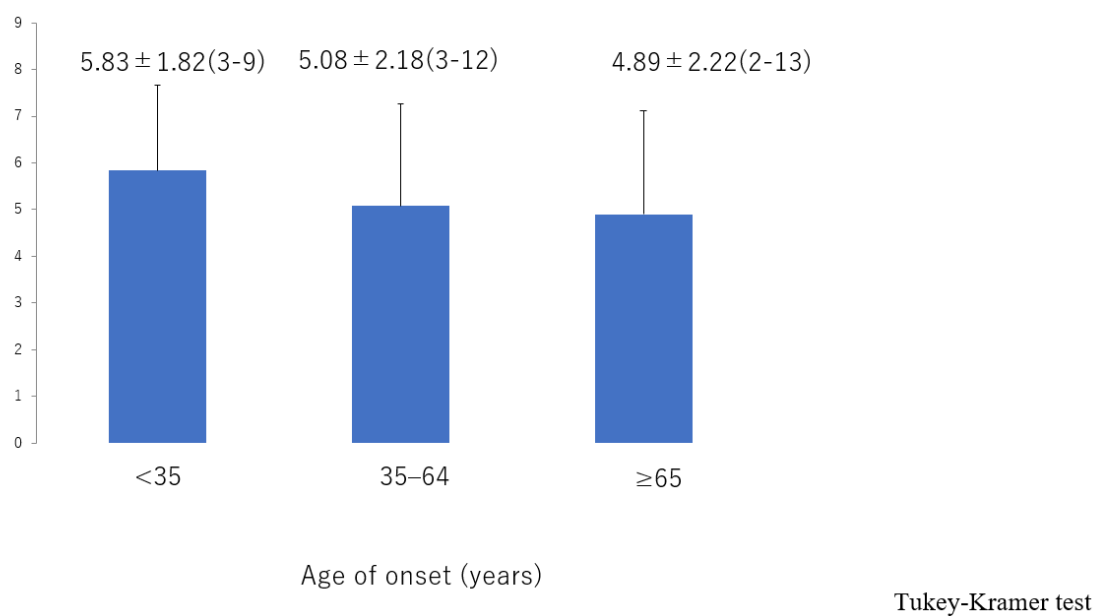


Figure S4. Number of skin incisions for LVA.

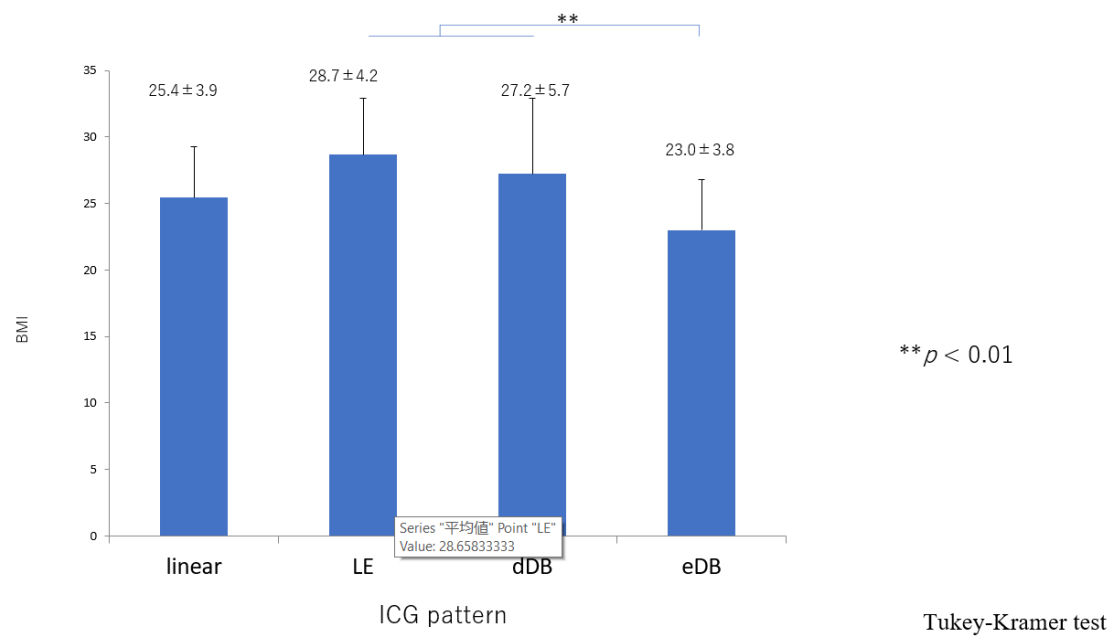


Figure S5. ICG pattern according to BMI independent of age.