

# SUPPLEMENTARY TABLE

Table S1. Joanna Briggs Institute (JBI) checklist for all studies.

Cohort study	Questions											Overall		
(1st Author, Year)	1	2	3	4	5	6	7	8	9	10	11			
Allyn, 2018 <sup>28</sup>	Yes			Yes	Yes	Yes	Yes		Yes		Yes	7		
Antonucci, 2016 <sup>29</sup>	Yes	Yes	Yes	Yes	Yes	Yes	Yes		Yes		Yes	9		
Baek, 2016 <sup>30</sup>	Yes		Yes			Yes	Yes	Yes	Yes		Yes	7		
Chen, 2019 <sup>31</sup>	Yes	Yes	Yes	Yes	Yes	Yes	Yes	Yes	Yes	Yes	Yes	11		
Combes, 2008 <sup>32</sup>	Yes			Yes	Yes	Yes	Yes		Yes		Yes	7		
Dado, 2020 <sup>33</sup>	Yes	Yes	Yes	Yes	Yes	Yes	Yes		Yes		Yes	9		
Deatrick, 2020 <sup>34</sup>	Yes	Yes	Yes	Yes	Yes	Yes	Yes	Yes	Yes		Yes	10		
Devasagayaraj, 2018 <sup>35</sup>	Yes	Yes	Yes			Yes	Yes		Yes		Yes	7		
Elsharkawy, 2010 <sup>36</sup>	Yes			Yes	Yes	Yes	Yes		Yes		Yes	7		
Fong, 2020 <sup>37</sup>	Yes	Yes	Yes	Yes	Yes	Yes	Yes	Yes	Yes		Yes	10		
Haneya, 2015 <sup>38</sup>	Yes	Yes	Yes	Yes	Yes	Yes	Yes		Yes		Yes	9		
He, 2018 <sup>39</sup>	Yes	Yes	Yes	Yes	Yes	Yes	Yes		Yes		Yes	9		
Kielstein, 2013 <sup>40</sup>	Yes	Yes	Yes	Yes	Yes	Yes	Yes		Yes		Yes	9		
Lee SY, 2020 <sup>41</sup>	Yes			Yes	Yes	Yes	Yes	Yes	Yes		Yes	8		
Luo, 2009 <sup>42</sup>	Yes		Yes	Yes	Yes	Yes	Yes	Yes	Yes	Yes	Yes	10		
McCanny, 2019 <sup>43</sup>	Yes	Yes	Yes	Yes	Yes	Yes	Yes	Yes	Yes		Yes	10		
Paek, 2018 <sup>44</sup>	Yes	Yes	Yes	Yes	Yes	Yes	Yes	Yes	Yes	Yes	Yes	11		
Panholzer, 2017 <sup>45</sup>	Yes	Yes	Yes			Yes	Yes		Yes		Yes	7		
Schmidt, 2014 <sup>46</sup>	Yes	Yes	Yes	Yes	Yes	Yes	Yes	Yes	Yes		Yes	10		
Thajudeen, 2015 <sup>47</sup>	Yes		Yes	Yes	Yes	Yes	Yes	Yes	Yes	Yes	Yes	10		
Unosawa, 2013 <sup>48</sup>	Yes			Yes	Yes	Yes	Yes		Yes		Yes	7		
Xie, 2020 <sup>49</sup>	Yes			Yes	Yes	Yes	Yes	Yes	Yes		Yes	8		
Yan, 2010 <sup>50</sup>	Yes	Yes	Yes	Yes	Yes	Yes	Yes	Yes	Yes		Yes	10		
Case-control Study	Questions											Overall		
(1st Author, Year)	1	2	3	4	5	6	7	8	9	10				
Yap, 2003 <sup>51</sup>	Yes			Yes	Yes			Yes	Yes	Yes		6		
RCT	Questions													Overall
(1st Author, Year)	1	2	3	4	5	6	7	8	9	10	11	12	13	
Li, 2019 <sup>52</sup>	Yes	Yes	Yes				Yes	Yes	Yes	Yes	Yes	Yes	Yes	10

## SUPPLEMENTARY FIGURES

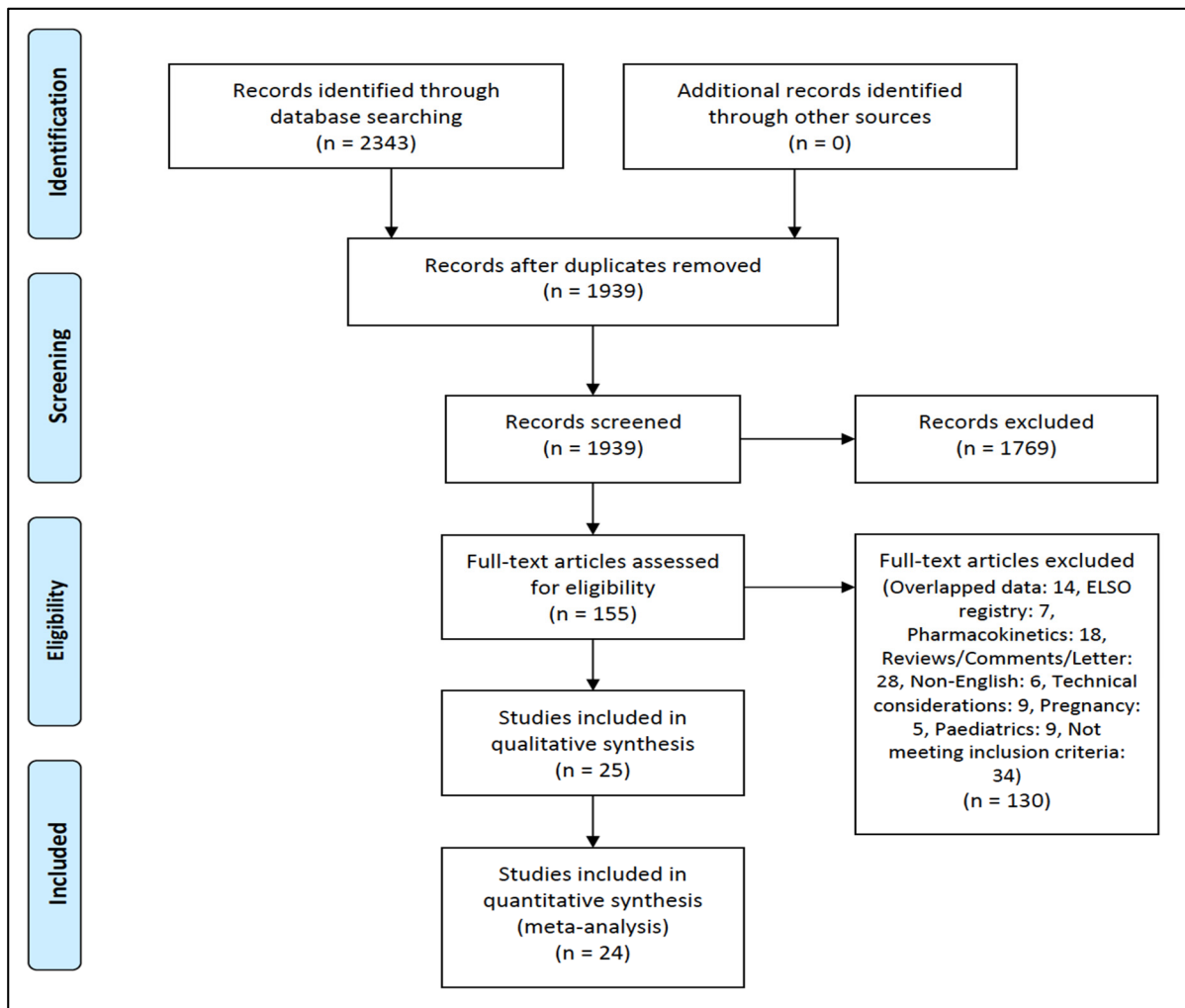


Figure S1. Preferred Reporting Items for Systematic Review and Meta-analyses (PRISMA) flowchart for study selection.

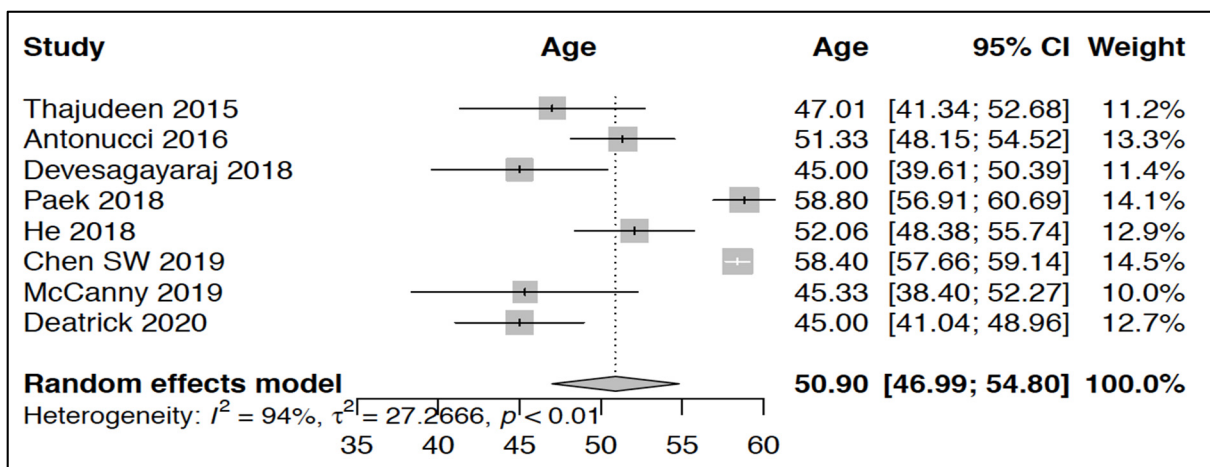


Figure S2. Forest plot showing pooled mean age.

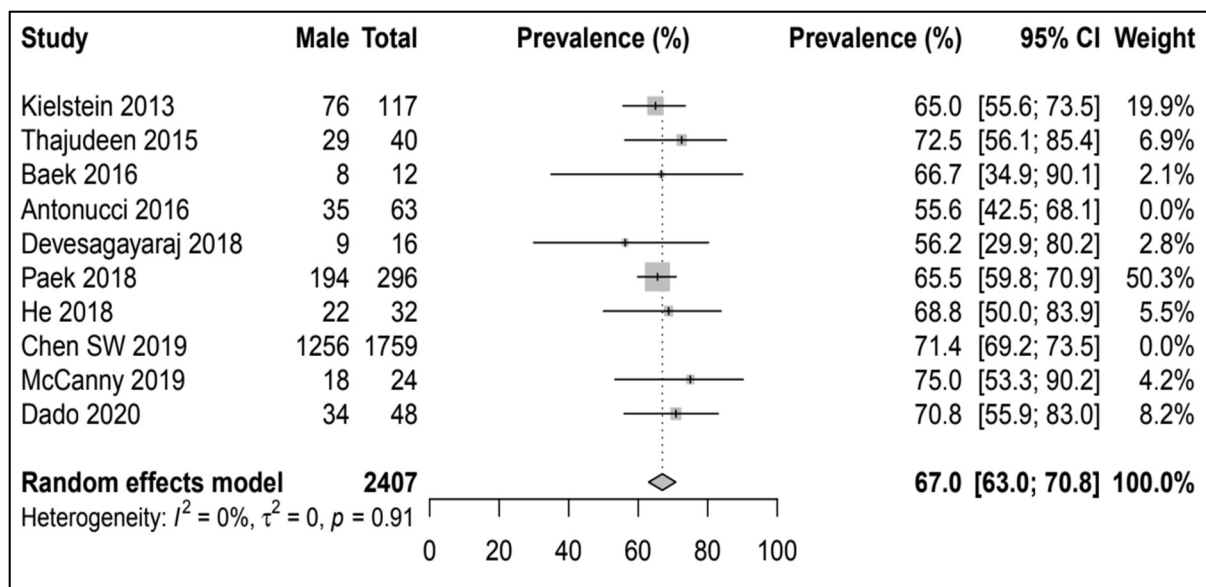


Figure S3. Forest plot showing pooled proportions of males.

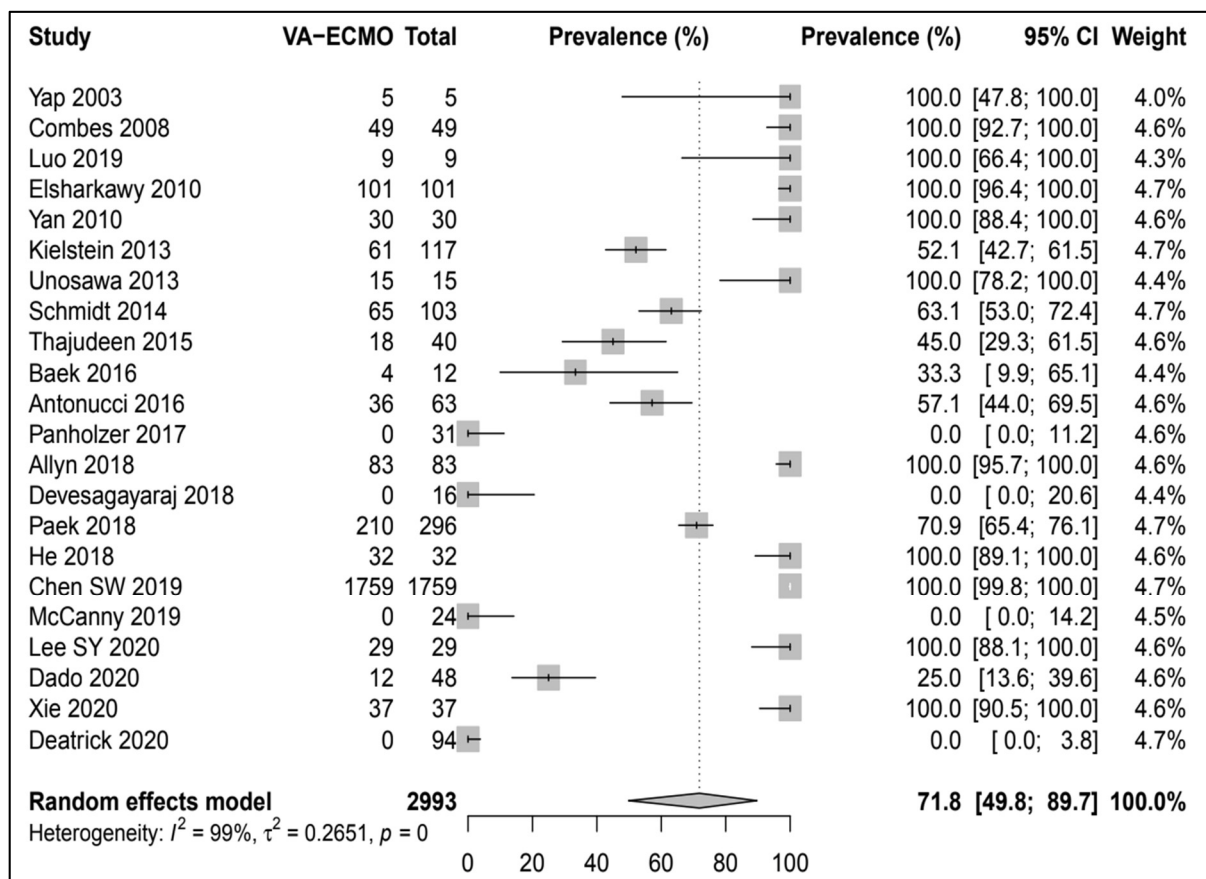


Figure S4. Forest plot showing pooled proportions of concurrent VA ECMO and RRT use.

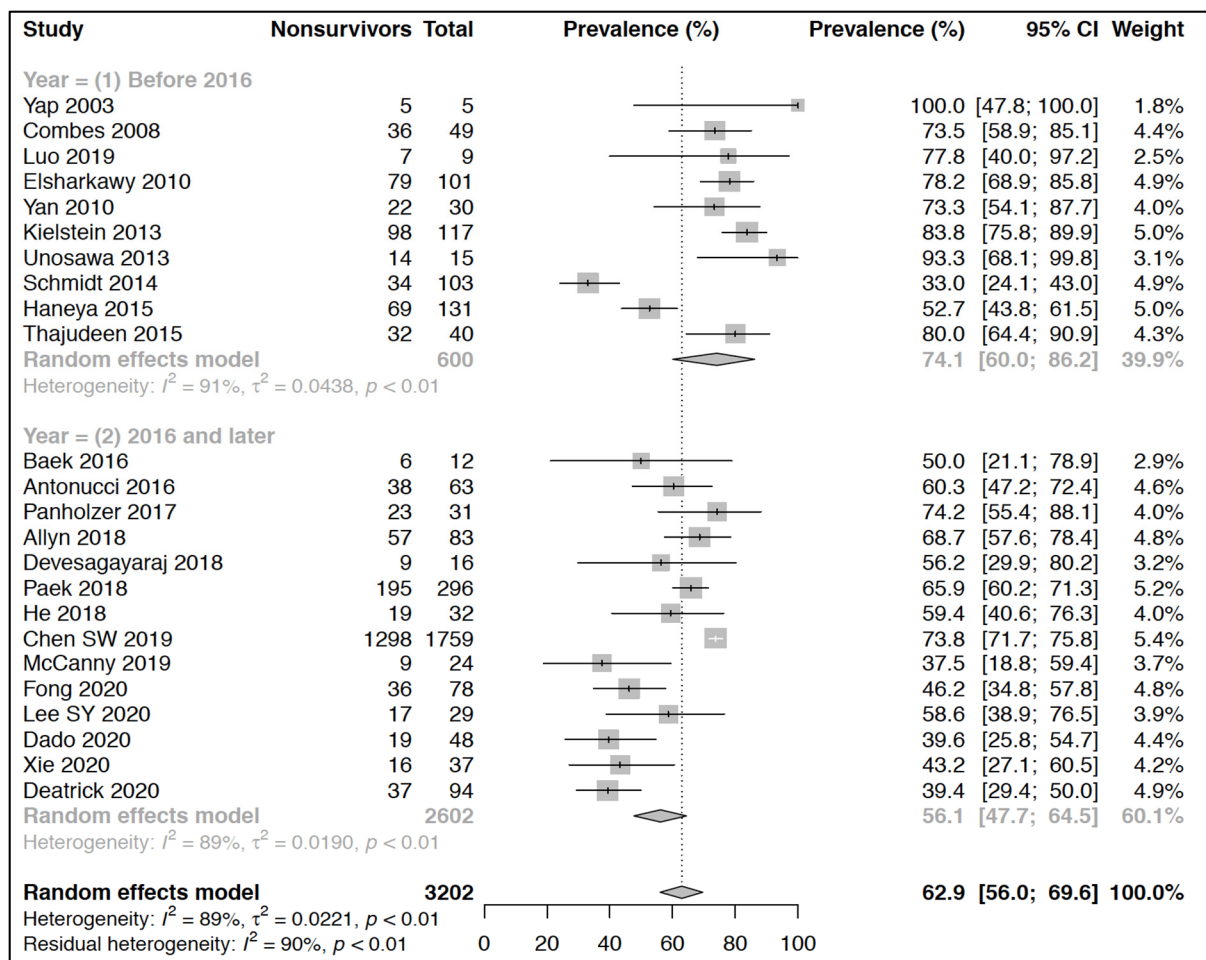


Figure S5. Forest plot showing pooled mortality before and after 2016.

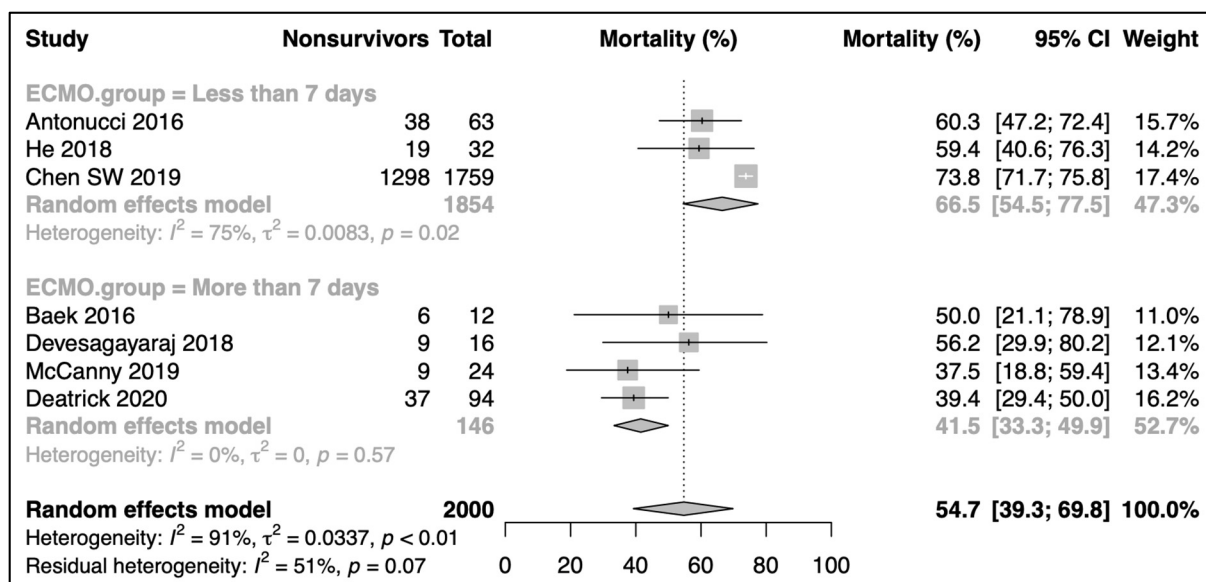


Figure S6. Forest plot showing pooled mortality based on ECMO duration (more and less than 7 days).