

Supplementary Materials

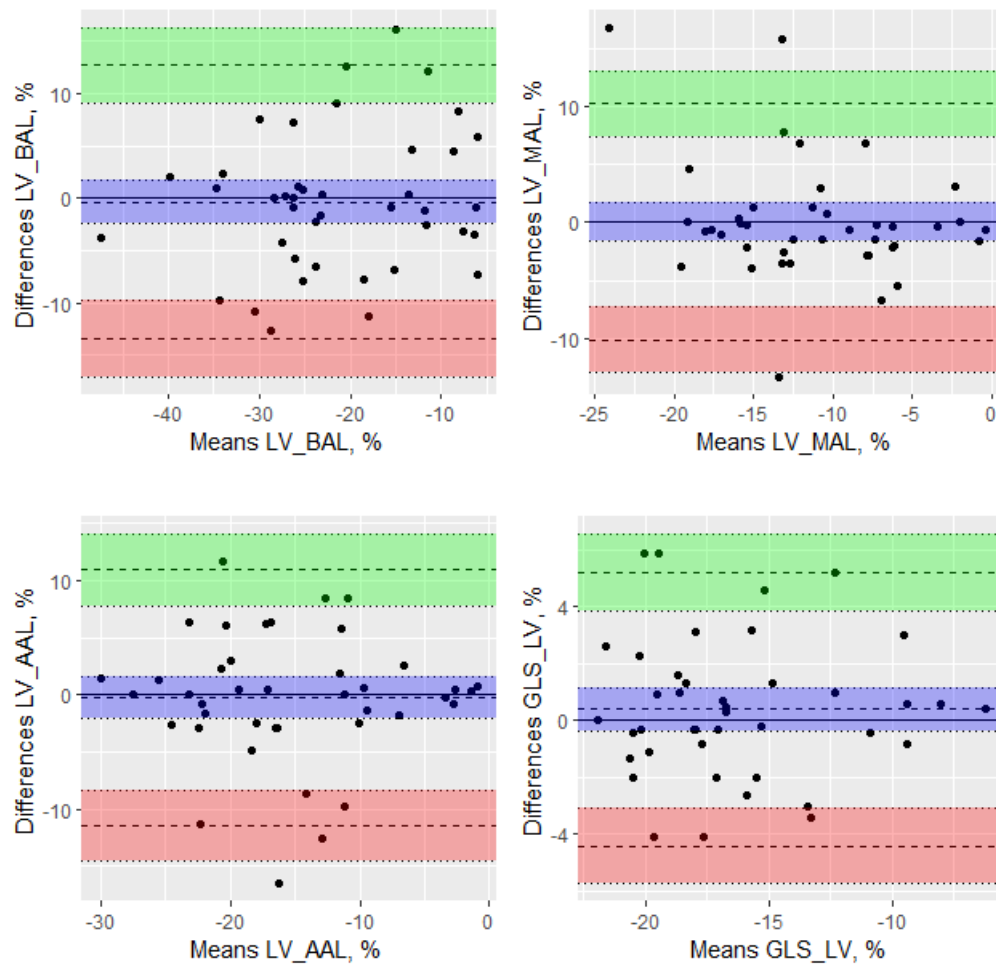


Figure S1. Bland-Altman plot with the representation of the mean differences with 95% confidence interval (dotted line and blue area), limits of agreement LOA (Lower limit of agreement with 95% confidence interval were represented by dotted line and green area while Upper limit of agreement with 95% confidence interval were represented by dotted line and red area) for the speckle-tracking cardiac measurements on left ventricle. LV- left ventricle, BAL- basal segment, MAL- medial segment, AAL- apical segment, GLS- global longitudinal strain.

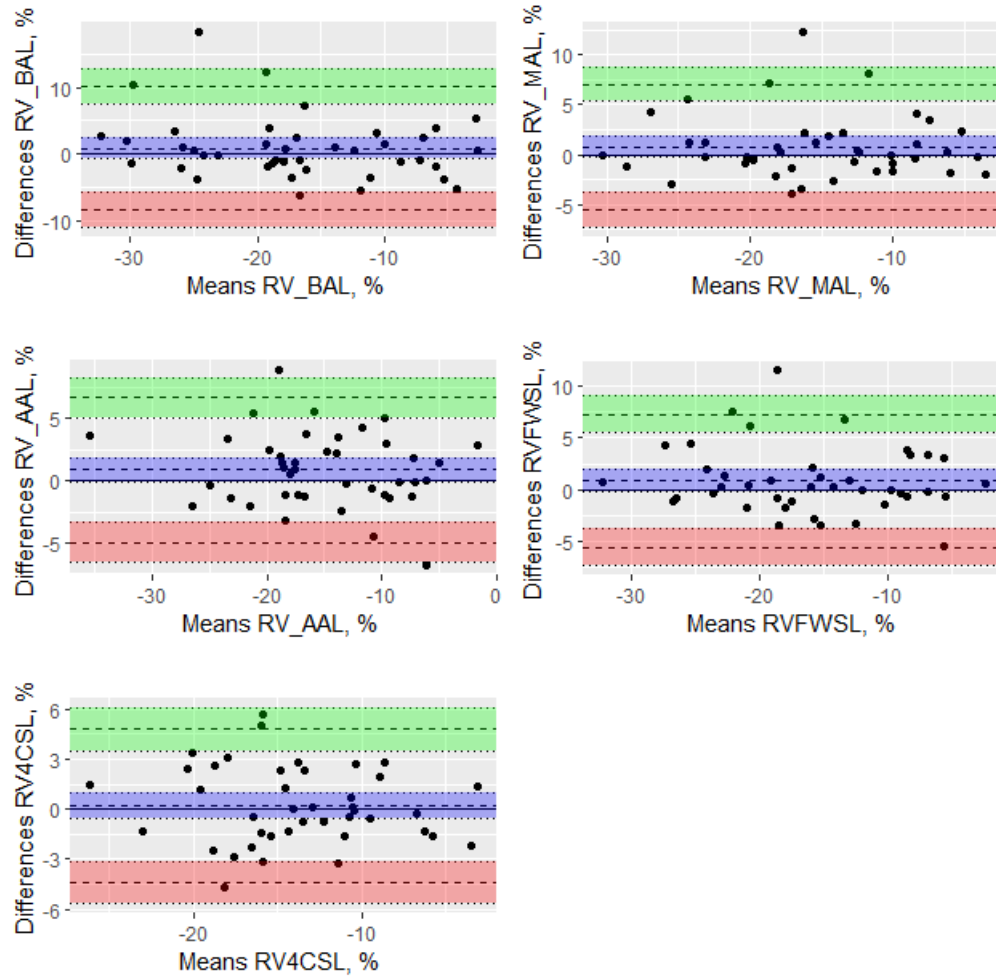


Figure S2. Bland-Altman plot with the representation of the mean differences with 95% confidence interval (dotted line and blue area), limits of agreement LOA (Lower limit of agreement with 95% confidence interval were represented by dotted line and green area while Upper limit of agreement with 95% confidence interval were represented by dotted line and red area) for speckle-tracking cardiac measurements on right ventricle. RV- right ventricle, BAL- basal segment, MAL- medial segment, AAL- apical segment, RVFWSL – right ventricle longitudinal free wall strain, RV4CSL – right ventricle four-chamber strain.

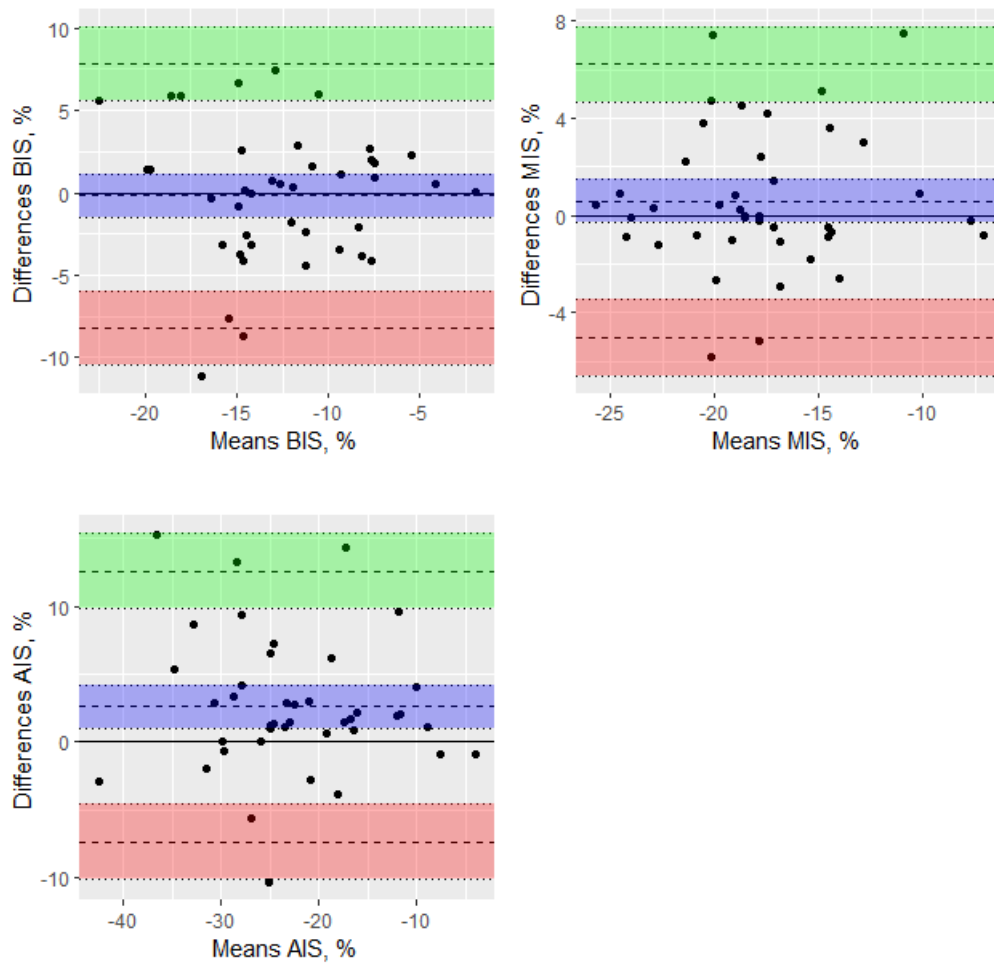


Figure S3. Bland-Altman plot with the representation of the mean differences with 95% confidence interval (dotted line and blue area), limits of agreement LOA (Lower limit of agreement with 95% confidence interval were represented by dotted line and green area while Upper limit of agreement with 95% confidence interval were represented by dotted line and red area) for speckle-tracking cardiac measurements on interventricular septum. BIS- basal segment of interventricular septum, MIS – medial segment of interventricular septum, AIS – apical segment of interventricular septum.