

Table S1. Excluded studies with reasons for exclusion.

<i>No</i>	<i>Study</i>	<i>Reason for Exclusion</i>
1	Technical quality and postoperative pain of single visit endodontic treatment of chronic apical periodontitis filled by bioceramic sealer <i>S.O. Niang, K. Bane, M. Sarr, B. Tourè, and P. Machtou</i> <i>IP Indian J Conserv Endod</i> 2018;3:92–7	Not a RCT
2	Postoperative pain in cold and warm endo-techniques using bioceramic sealer <i>I. Filipov, P. Zagorchev, S. Dimitrova, and N. Manchorova-Veleva</i> <i>International Association for Dental Research 2018 Poster session</i>	Raw data, authors did not answer request
3	Postoperative pain and associated factors in patients undergoing single visit root canal treatment on teeth with vital pulp <i>R. Shresha, D. Shresha, and R. Kayasatha</i> <i>Kathmandu Univ Med</i> 2018;16:220–3.	Not a RCT
4	Predictive models of pain following root canal treatment: a prospective clinical study <i>A. Arias, J.C.de la Macorra, J.J. Hidago, and M.Azabal</i> <i>Int Endod J</i> 2013;46:784–93	Not a RCT
5	Comparison of post-obturation pain experience following one-visit and two-visit root canal treatment on teeth with vital pulps: a randomized controlled trial <i>C. Wang, P. Xu, L. Ren, G. Dong, and L.Ye</i> <i>Int Endo J</i> 2010; 43:692–7	Study comparing POP after single or multiple visits

6	Factors associated with postoperative pain in endodontic therapy <i>D. Sadaf, M.Z. Ahmad</i> <i>Int J BioMed Sci 2014;10:243–7</i>	Not a RCT
7	Comparative evaluation of pain , tenderness and swelling followed by radiographic evaluation of periapical changes at various intervals of time following single and multiple visit endodontic therapy: an in vivo study <i>M.B. Prashanth, P.N. Tavane, S. Abraham, and L. Chacko</i> <i>J Contemp Dent Pract 2011;12:187–91</i>	Did not include BCS
8	Assessment of pain and dissolution of apically extruded sealers and their effect on the periradicular tissues <i>G. Shashirekha, A. Jena, S. Pattanaik, and J. Rath</i> <i>J Conserv Dent 2018;21:546–50</i>	Did not include BCS
9	Comparison of the effect of photobiomodulation therapy and Ibuprofen on postoperative pain after endodontic reatment: randomized, controlled clinical study <i>E. Costa Nunes, F.J. Herkrath, E. Hideki Suzuki, E. C. Gualberto Junior, A.A.F. Marques, and E.C. Sponchiado Junior</i> <i>Lasers Med Sci 2020;35:971–8</i>	Study comparing POP management after ibuprofen or laser
10	The effect of pulpotomy using a Calcium-enriched mixture cement versus one-visit root canal therapy on postoperative pain relief in irreversible pulpitis: a randomized clinical trial <i>S. Asgary, and M.J. Eghbal</i>	Did not include BCS

- | | | |
|-------|--|---|
| 11 | Post-obturation pain following one-visit and two-visits root canal treatment in necrotic anterior teeth
<i>K.N. Rao, R. Kandaswamy, G. Umashetty, V.P. Singh Rathore, C. Hotkar, and B.S. Patil</i>
<i>J Int Oral Health 2014;6:28–32</i> | Study comparing POP after single or multiple visits |
| <hr/> | | |
| 12 | Influence of photodynamic therapy in the control of postoperative pain in endodontic treatment: a cross-sectional randomized clinical trial
<i>F.M.S. Yoshinari, K.F. Souza Pereira, D. Zafalon Beraldo, J.C.L. da Silva, E.J. Zafalon, and P.G. da Silva</i>
<i>Pesqui Bras Odontopediatria Clin Integr 2019;191:43</i> | Study comparing POP management after ibuprofen or laser |
| <hr/> | | |
| 13 | Postoperative pain intensity after single- versus two-visit nonsurgical endodontic retreatment: a randomized clinical trial
<i>Y.E. Hepsenoglu, T.F. Eyuboglu, and M. Ozcan</i>
<i>J Endod 2018;44:1339–46</i> | Study comparing POP after single or multiple visits |
| <hr/> | | |
| 14 | A prospective randomized comparative study of cold lateral condensattion versus core/gutta-percha in teeth with periapical lesions
<i>G.K. Demirci, and M.K. Chalishkan</i>
<i>J Endod 2016; 42:206–10</i> | Did not include BCS |
| <hr/> | | |
| 15 | Maintaining apical patency does not increase postoperative pain in molars with necrotic pulp and apical periodontitis: a randomized controlled trial
<i>I.E. Yaylali, S. Kurnaz, and Y. Tunca</i>
<i>J Endod 2018;44:335–40</i> | Did not include BCS |
-

-
- | | | |
|----|---|--|
| 16 | <p>A randomized controlled trial to evaluate the incidence of postoperative pain and flare-ups in single and multiple visits root canal treatment</p> <p><i>V.K. Dhyani, S. Chhabra, V.K. Sharma, and A. Dhyani</i></p> <p><i>Med J Armed Forces India 2020</i></p> | <p>Study comparing POP after single or multiple visits</p> |
|----|---|--|
-
- | | | |
|----|--|----------------------------|
| 17 | <p>Comparative evaluation of postoperative pain after root canal treatment using three different sealers, Viz., Tubli-Seal EWT, Apexit Plus, AH Plus: an in-vivo study</p> <p><i>B. Gudlavalleti, and A.A. Patil</i></p> <p><i>J Clin Diagn Res 2020;14:ZC04–9</i></p> | <p>Did not include BCS</p> |
|----|--|----------------------------|
-

POP, postoperative pain; RCT, randomized clinical trial.

Figure S1. Forest plot of flare-up after RCF with BCS vs. RBS.

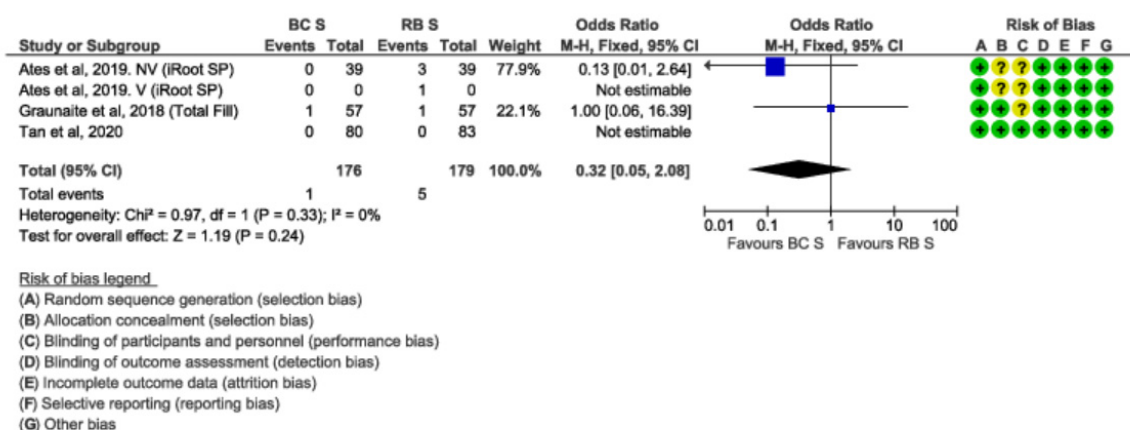


Figure S2. Diagram of summary of pain characteristics in a subgroup of BCS and RBS traditional filling technique groups 24 h after RCF.

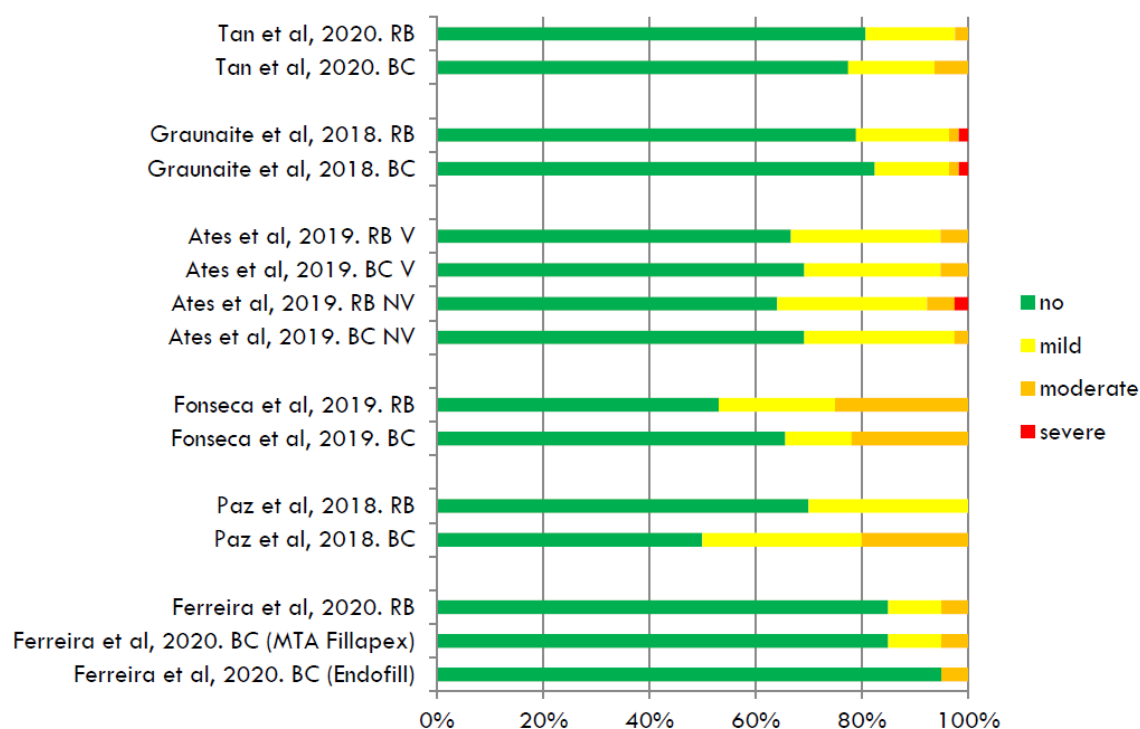


Figure S3. Diagram of summary of pain characteristics in a subgroup of BCS and RBS traditional filling technique groups 48 h after RCF.

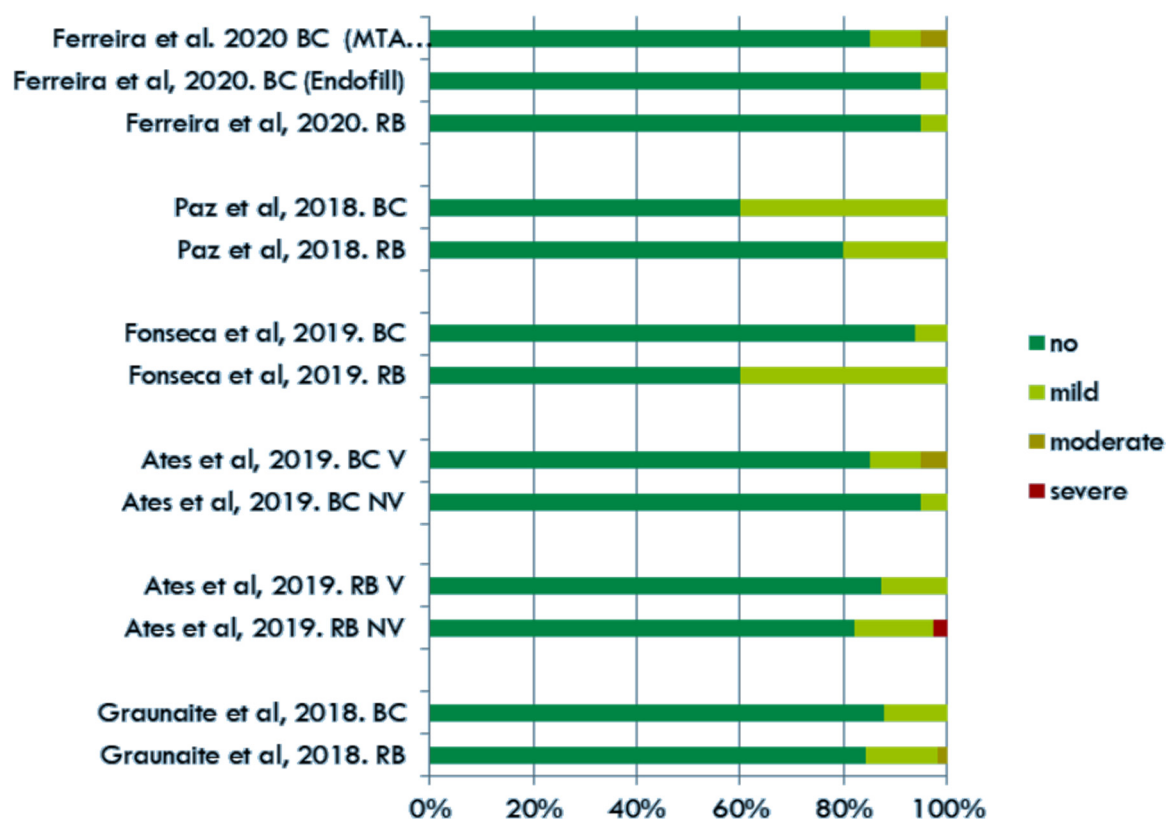


Figure S4. Forest plot of POP in patients treated with warm and cold filling techniques 24 h after RCF with BCS vs. RBS.

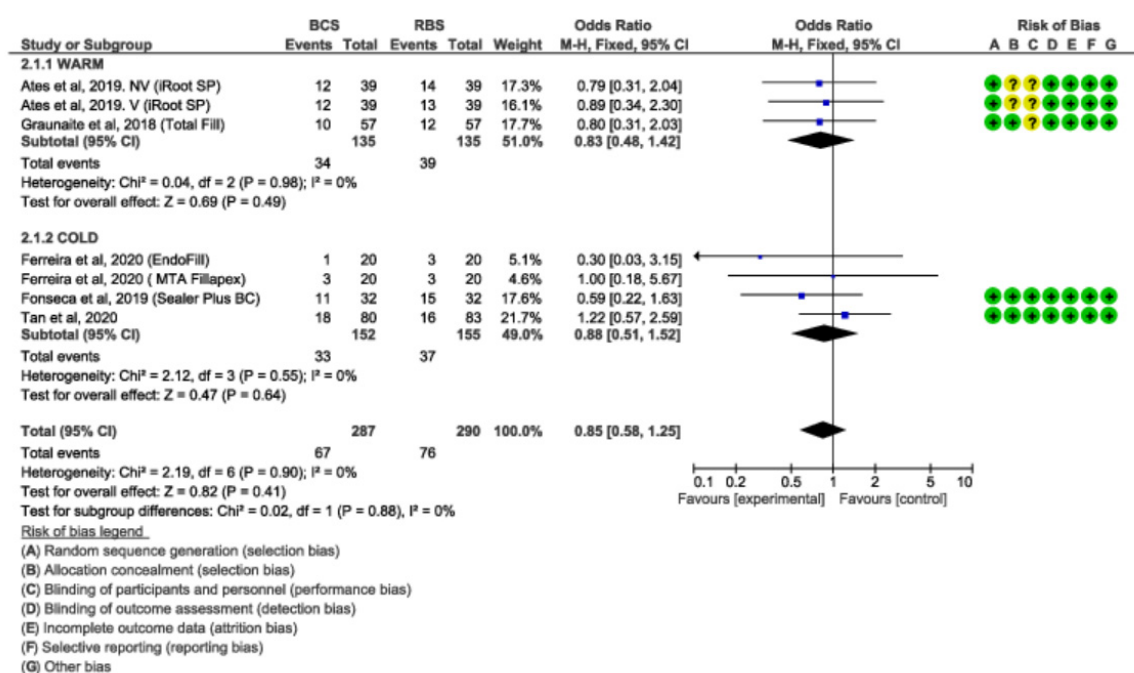


Figure S5. Forest plot of POP in patients treated with warm and cold techniques 48 h after RCF with BCS vs. RBS.

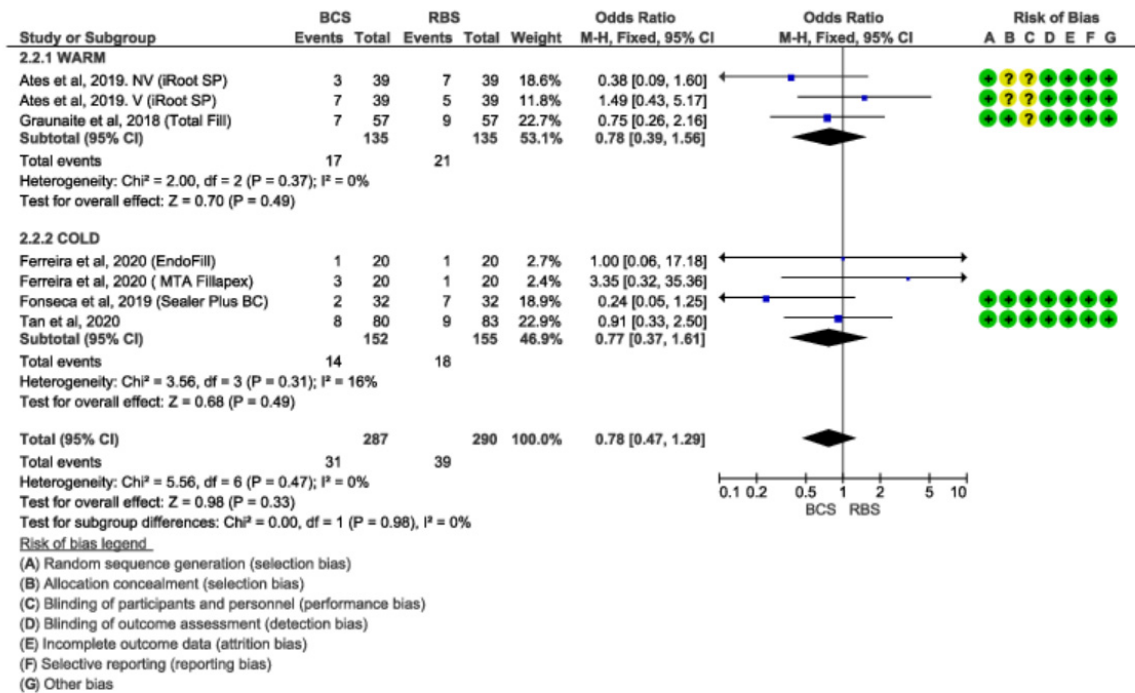


Figure S6. Forest plot of POP in vital and non-vital pulp 24 h after RCF with BCS vs. RBS.

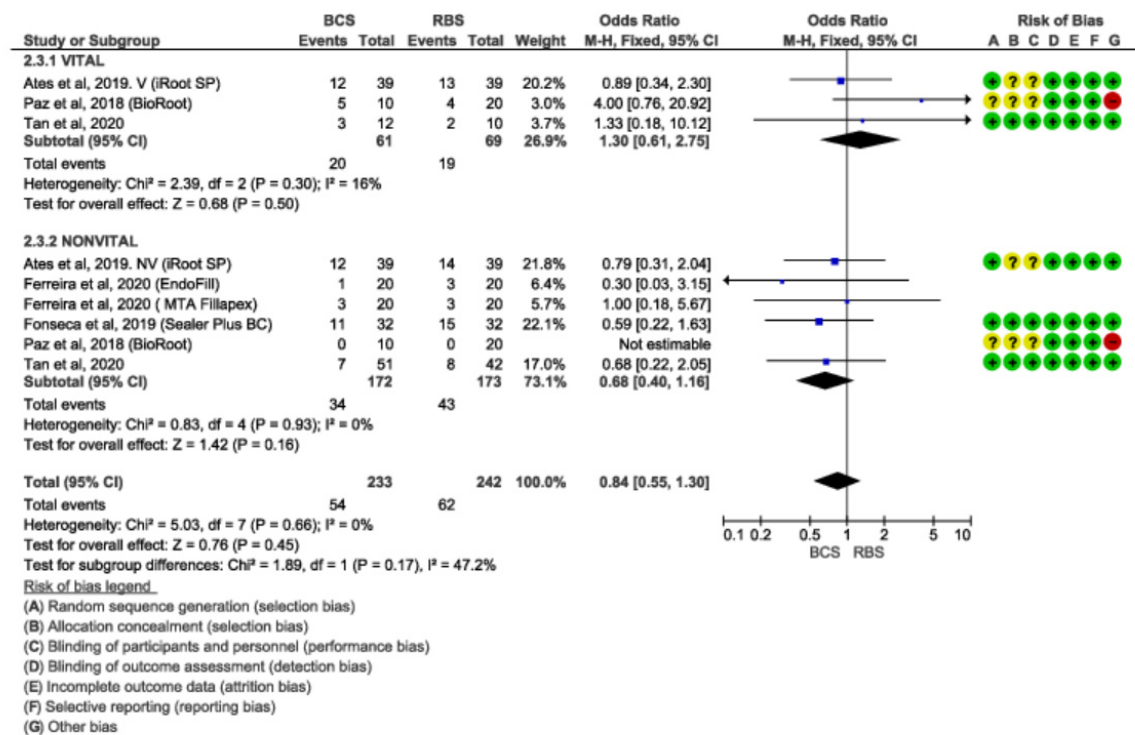


Figure S7. Forest plot of POP in vital and non-vital pulp 48 h after RCF with BCS vs. RBS.

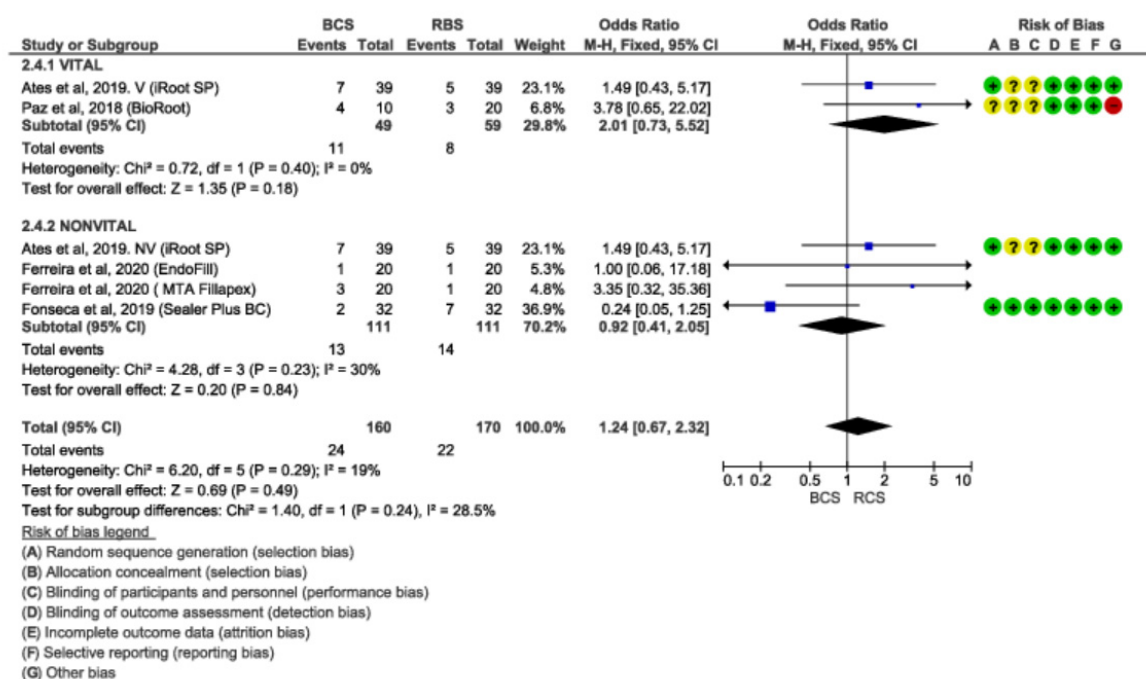


Figure S8. Forest plot of POP following retreatment 24 h after RCF with BCS vs. RBS.

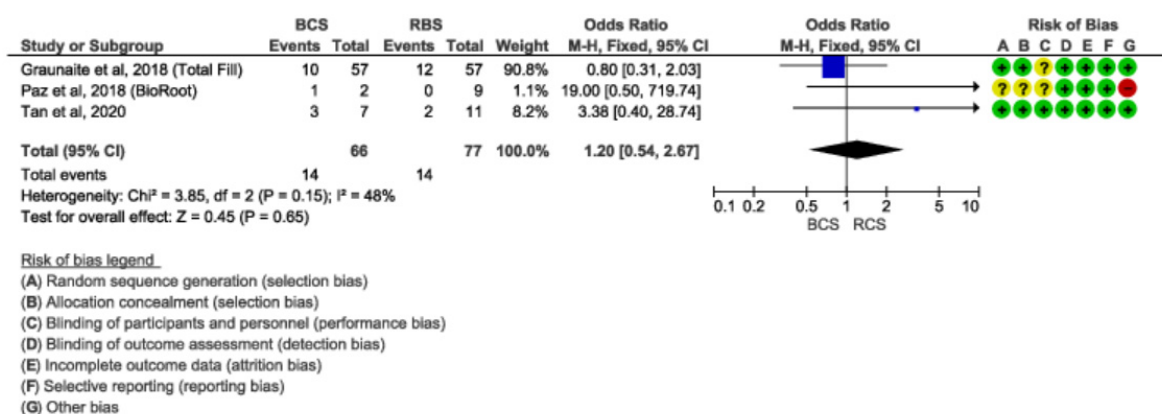


Figure S9. Forest plot of POP following retreatment 48 h after RCF with BCS vs. RBS.

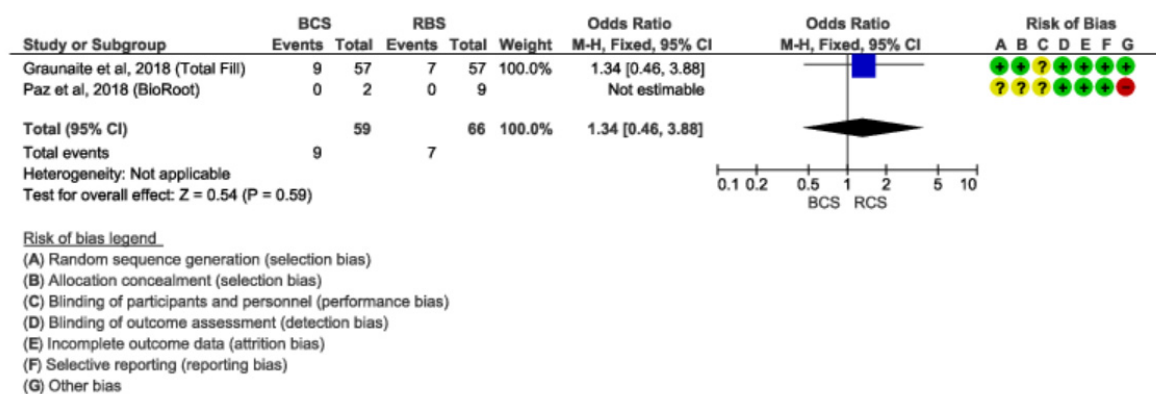


Figure S10. Forest plot of POP 24 h after RCF with BCS vs. RBS following single or multiple visit treatment.

