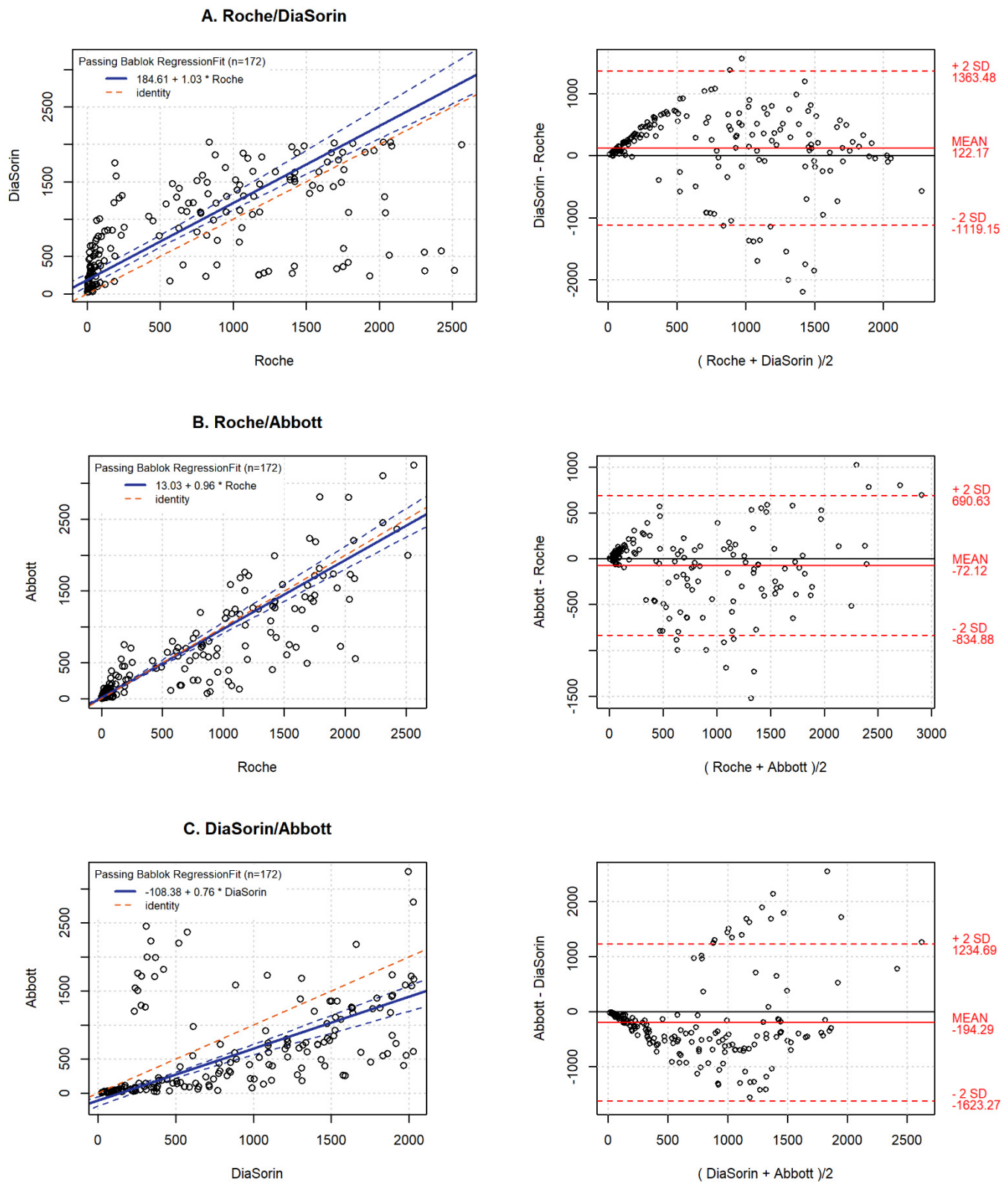
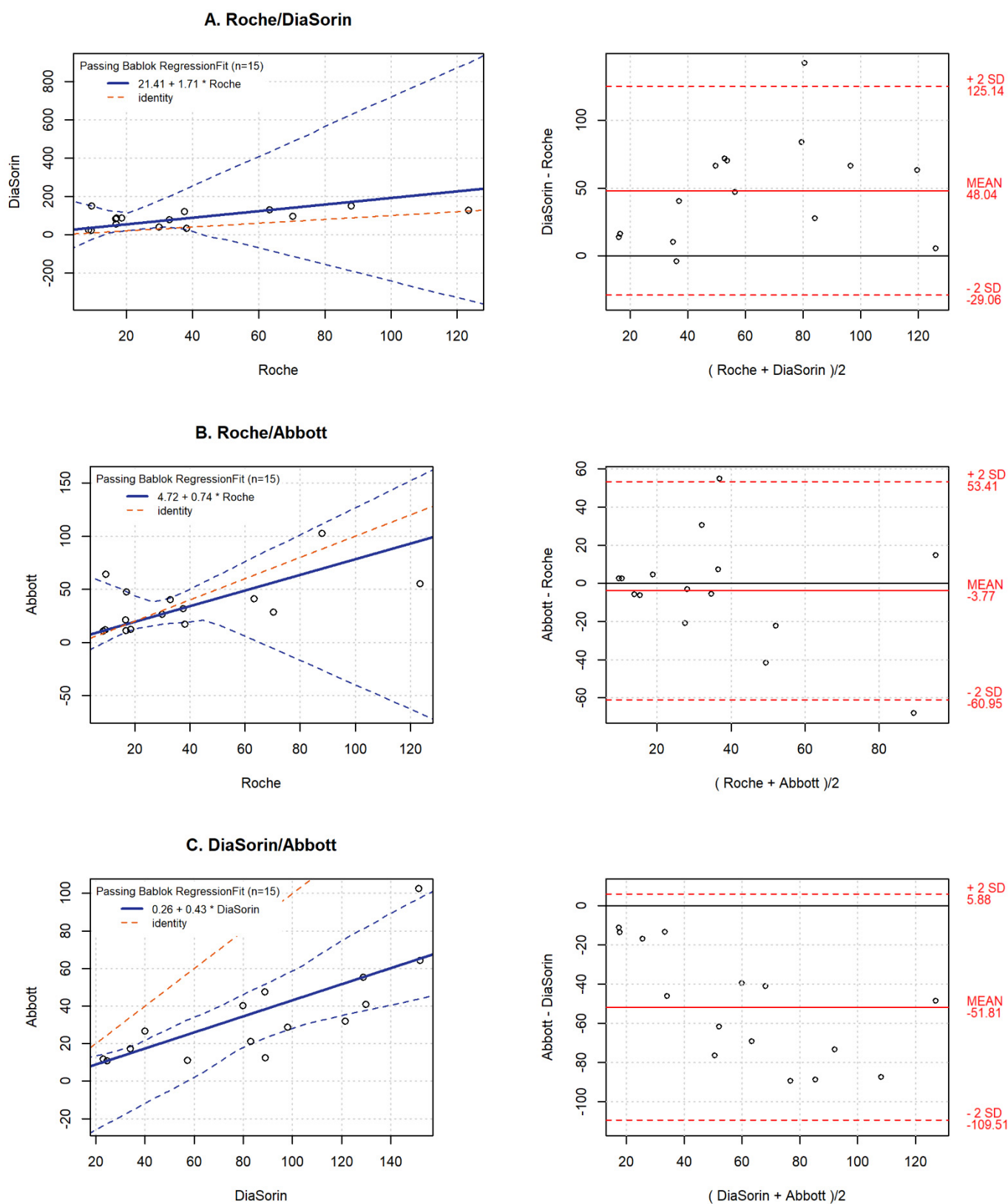




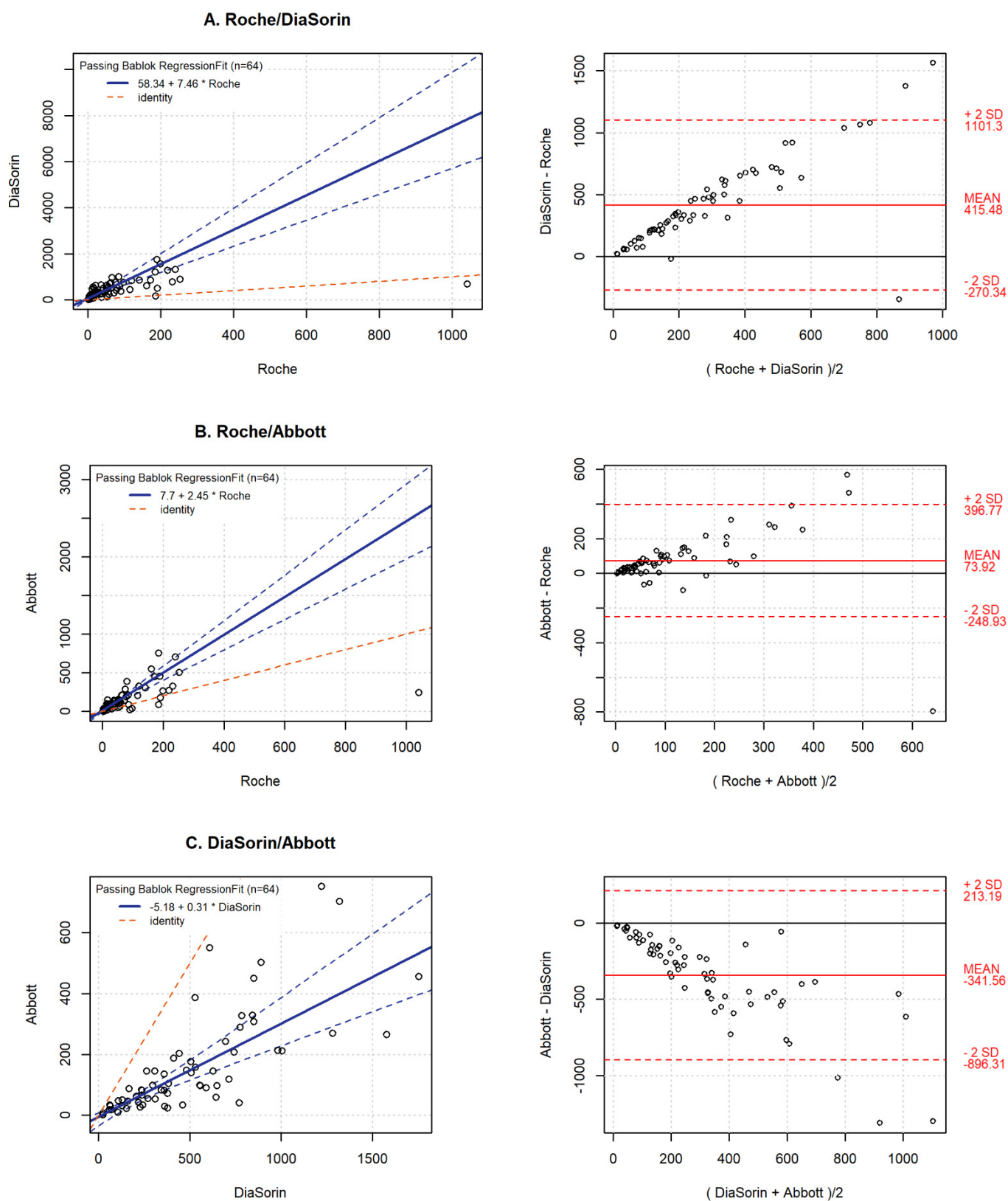
Supplementary Materials



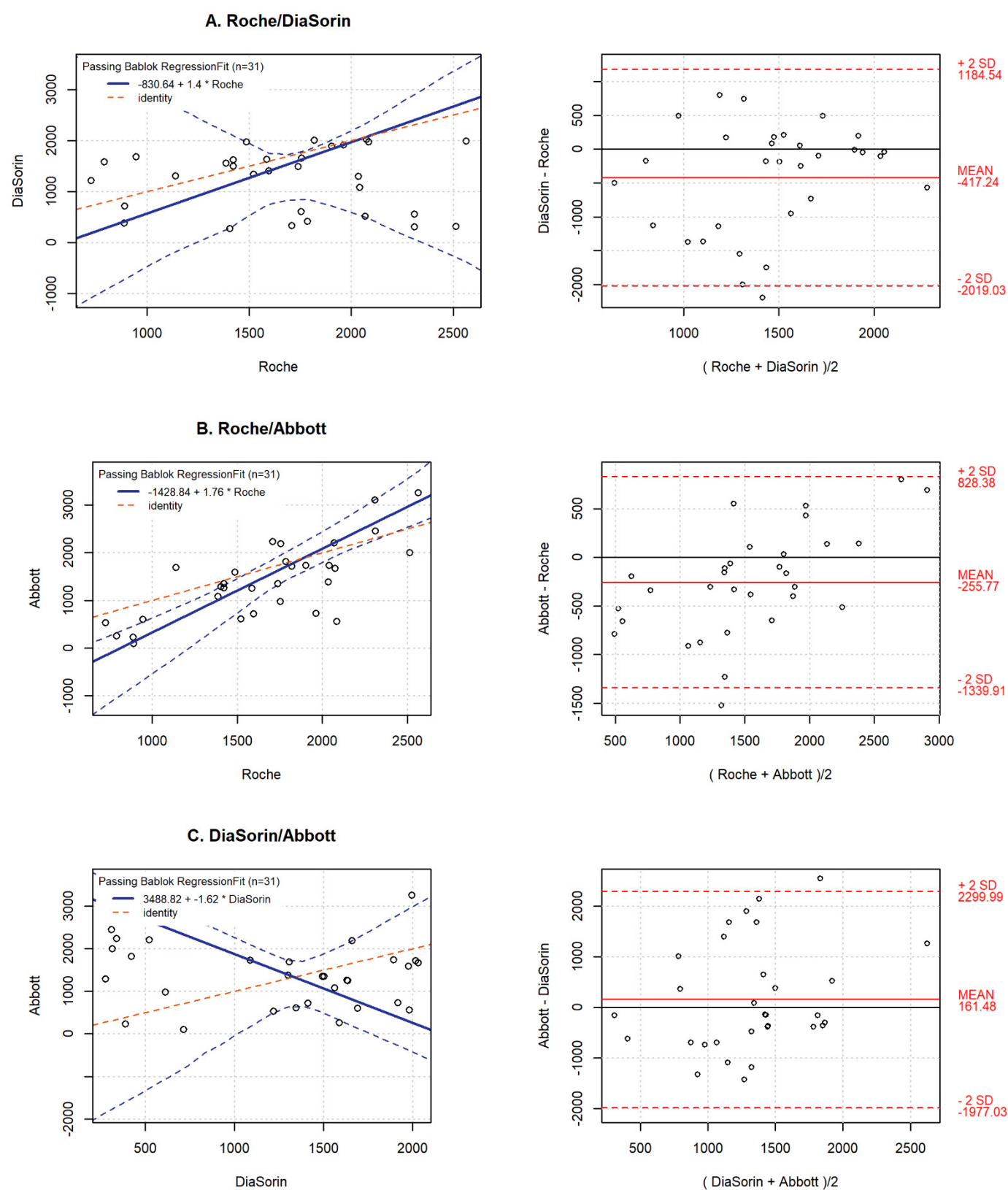
**Figure S1.** Passing-Bablok and Bland-Altman plots for the same samples compared with Roche, DiaSorin and Abbott tests, for the all tested samples at all time points (n = 172).



**Figure S2.** Passing-Bablok and Bland-Altman plots samples from SCV2-positive collected before the first dose of the vaccine (n = 15), compared with Roche, DiaSorin and Abbott tests.

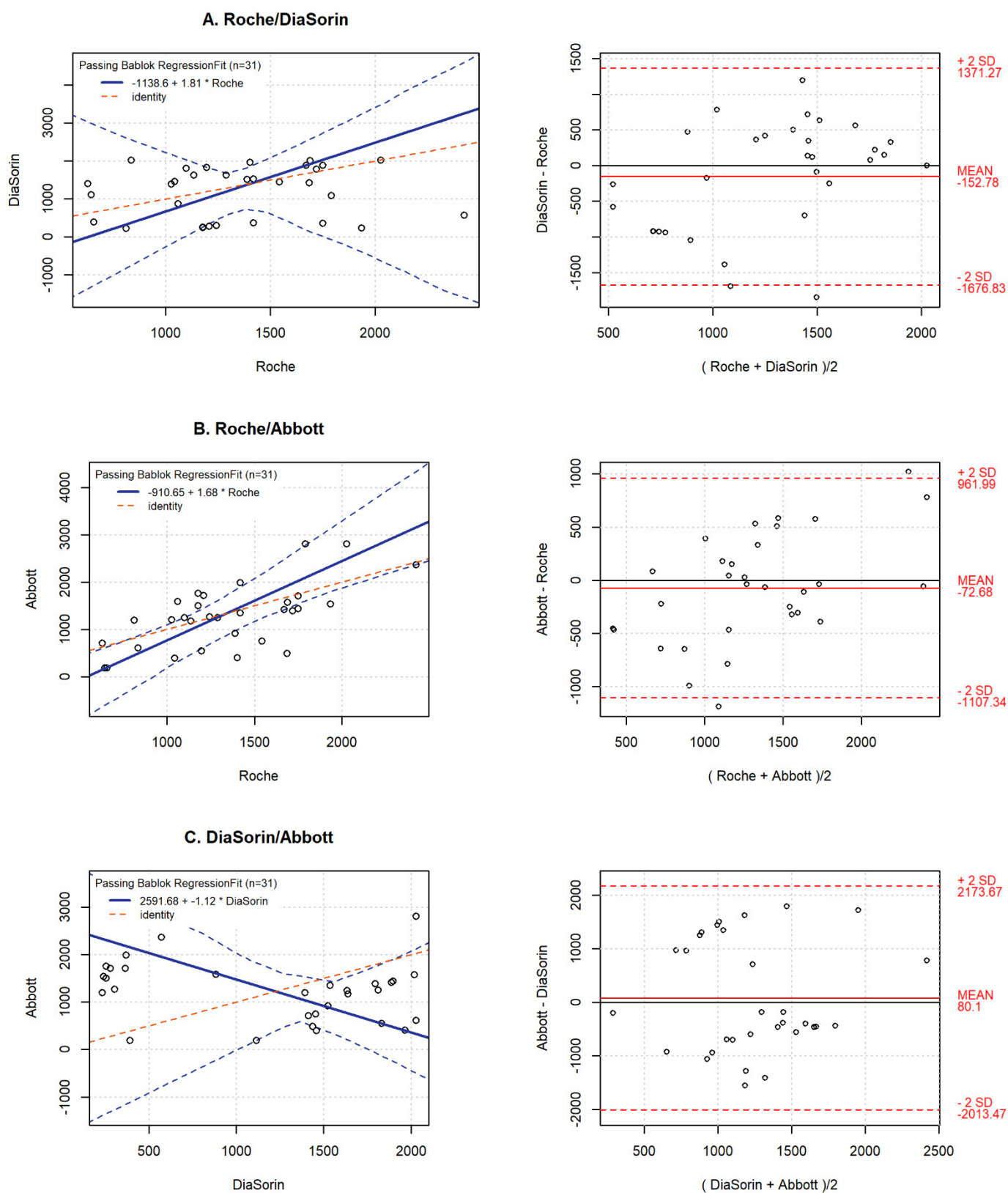


**Figure S3.** Passing-Bablok and Bland-Altman plots for SARS-CoV-2 antibody level in the SCV2-negative group on the day of the second vaccine dose.

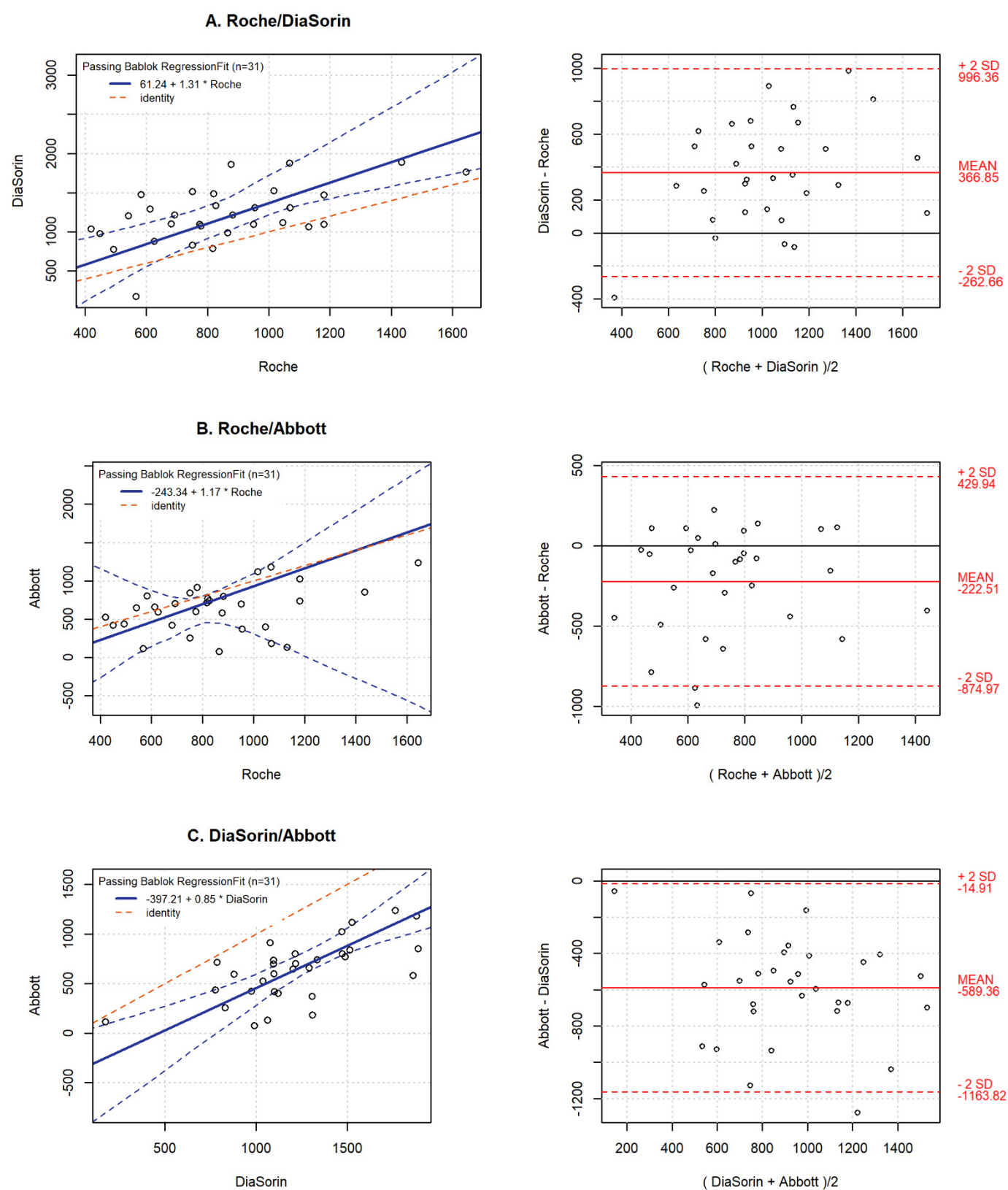


**Figure S4.** Passing-Bablok and Bland-Altman plots for the subgroup of the SCV2-negative group that remained within the detection range for the time points after the second dose of the vaccine – 8 days after dose 2 (n = 31).





**Figure S5.** Passing-Bablok and Bland-Altman plots for the subgroup of the SCV2-negative group that remained within the detection range for the time points after the second dose of the vaccine – 14 days after dose 2 (n = 31).



**Figure S6.** Passing-Bablok and Bland-Altman plots for the subgroup of the SCV2-negative group that remained within the detection range for the time points after the second dose of the vaccine – 30 days after dose 2 (n = 31).