

Figure S1. Gating strategy for immunological memory panel.

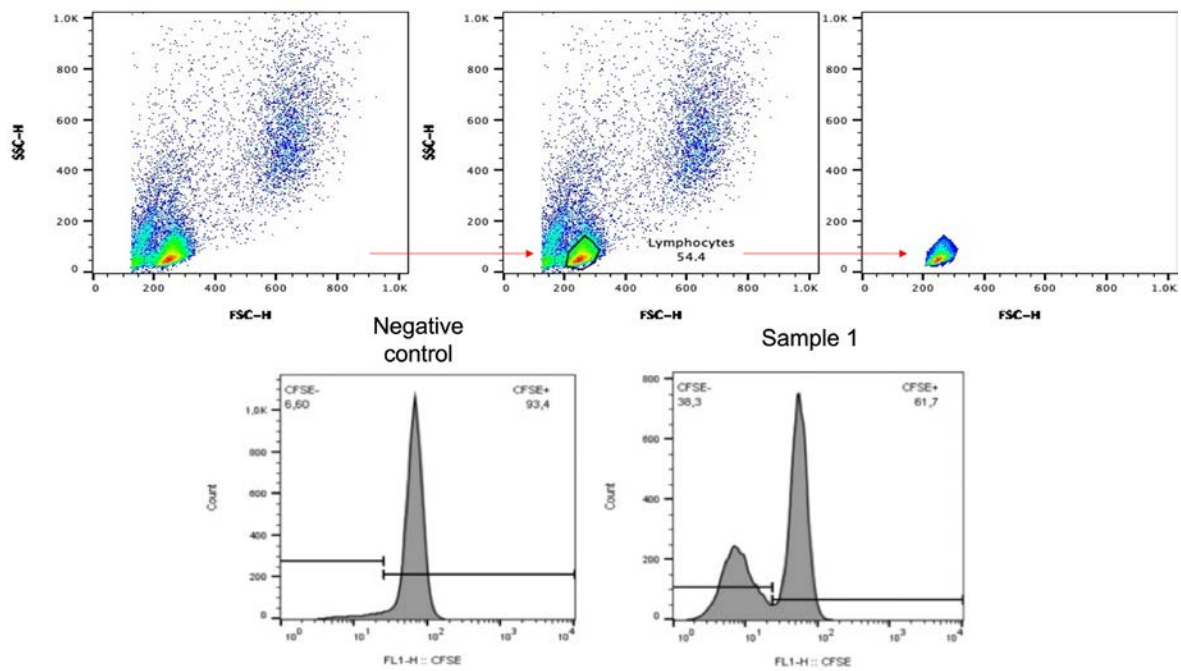


Figure S2. Gating strategy for proliferation assay using CFSE.

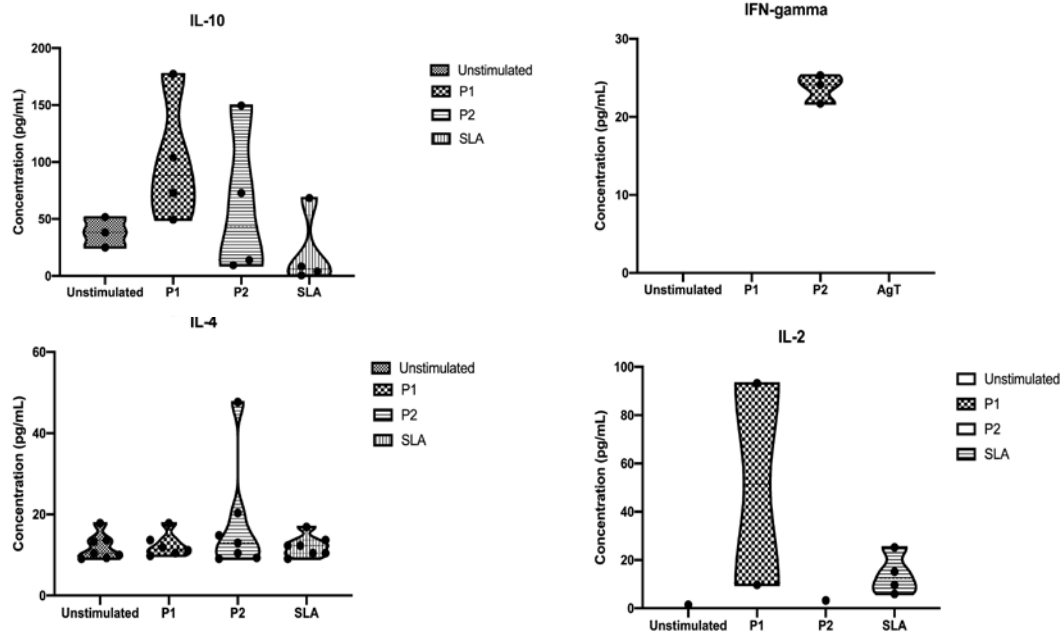


Figure S3. Th1 and Th2 cytokine production on CL group after 48h stimulation. P1– pool 1, P2 – pool 2, SLA – Soluble *Leishmania* antigen.

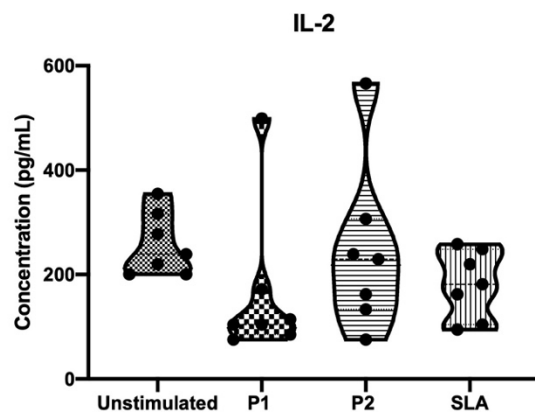


Figure S4. Th1 and Th2 cytokine production on CT group after 48h stimulation. P1– pool 1, P2 – pool 2, SLA – Soluble *Leishmania* antigen.