

Figure S1. Hemolytic activities of LLO secreted by rRB51 strains on sheep blood agar plate.

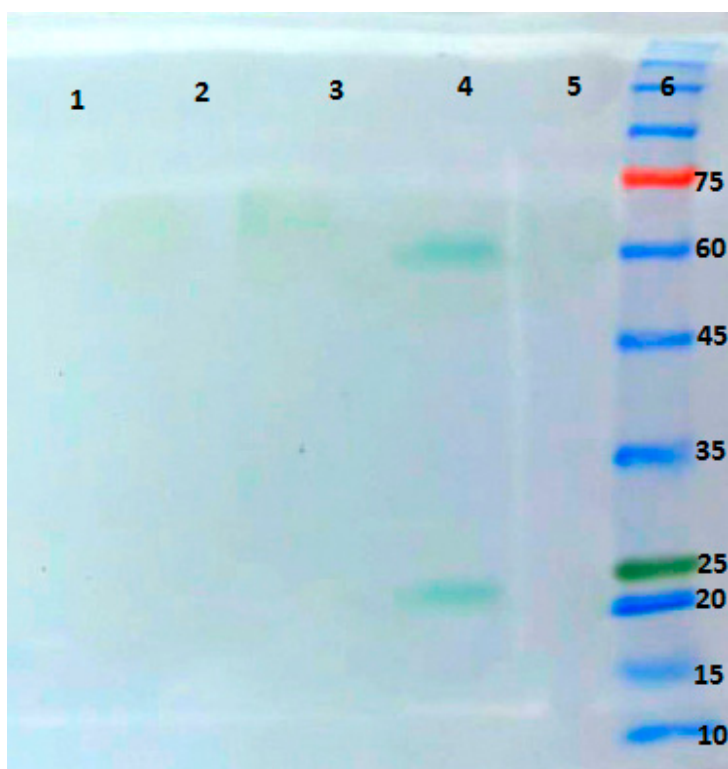


Figure S2. Western blots showing secretion of mLLO and BAX-SMAC by rRB51. Lane 1, RB51 culture supernatant; Lanes 2, 3, 4, and 5, the supernatant of rRB51 culture; Lane 6, Protein marker. The 21kDa and 58kDa bands are related to BAX-SMAC and mLLO protein, respectively.