

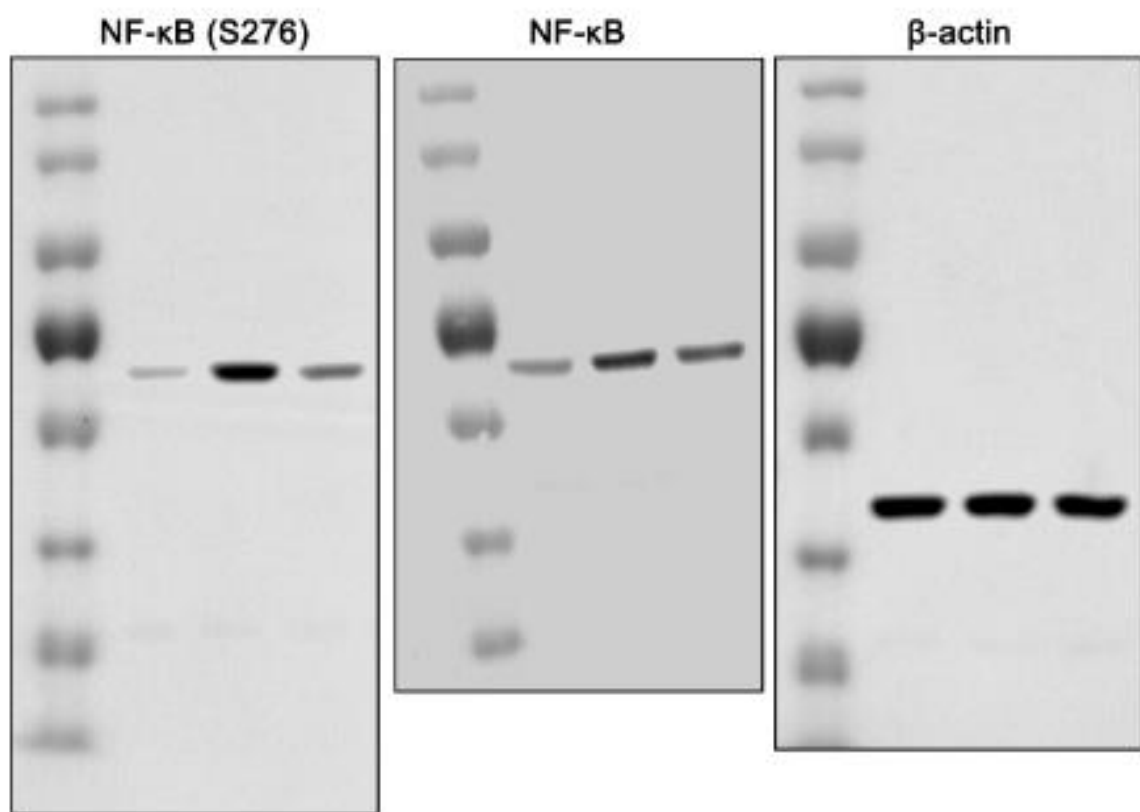
Supplementary Information

Epigallocatechin-3-gallate attenuates leukocyte infiltration in 67-kDa laminin receptor-dependent and -independent pathways in the rat frontoparietal cortex following status epilepticus

Ji-Eun Kim,¹ Duk-Shin Lee,¹ Tae-Cheon Kang^{1,*}

¹Department of Anatomy and Neurobiology, Institute of Epilepsy Research, College of Medicine, Hallym University, Chuncheon 24252, South Korea

* Correspondence to: T. -C. Kang, Department of Anatomy and Neurobiology, College of Medicine, Hallym University, Chuncheon, Kangwon-Do 24252, South Korea; Tel: +82-33-248-2524; Fax: +82-33-248-2525; E-mail: tkang@hallym.ac.kr



Supplementary Figure S1. Full-length gel images of Western blot data in Fig. 2E.