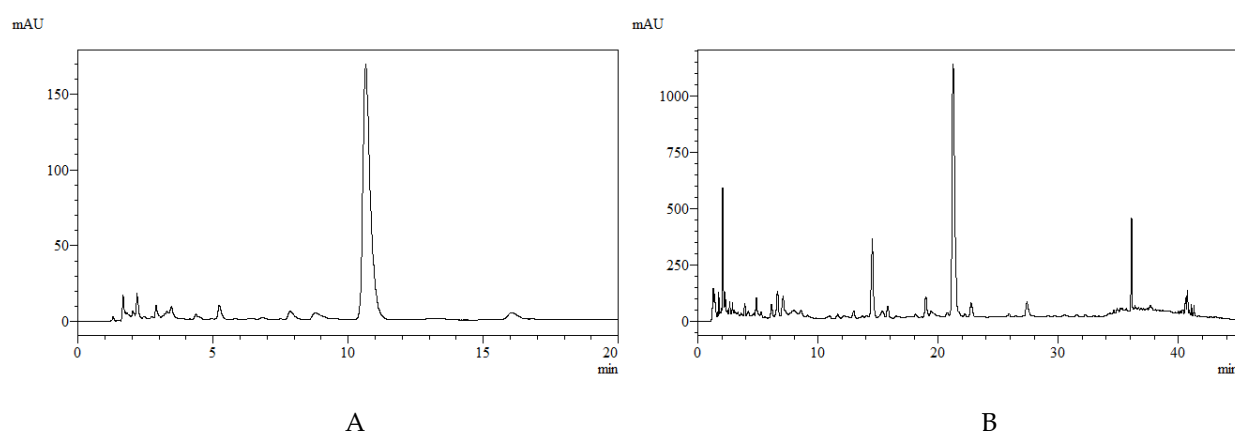


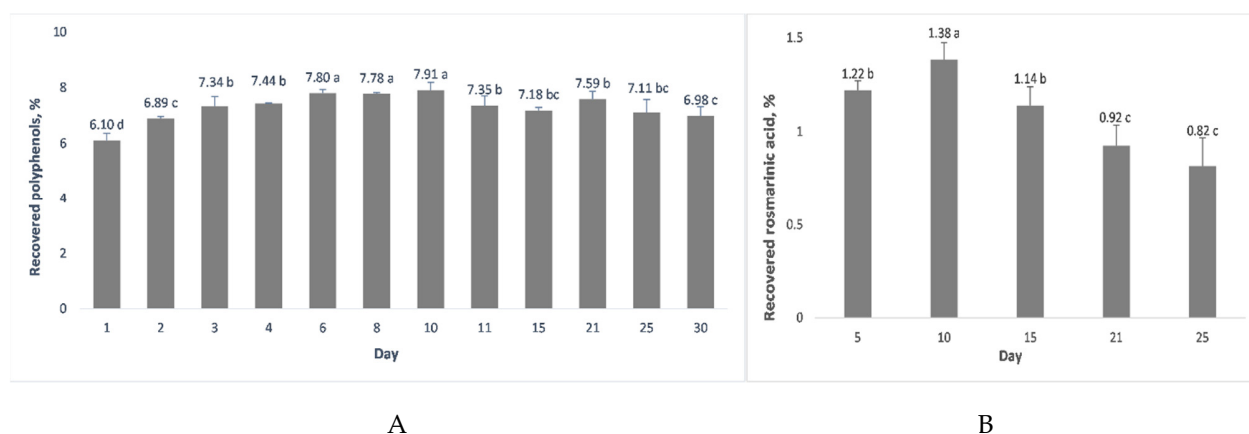
Supplementary Materials

Subcritical Water Extraction of Rosmarinic Acid from Lemon Balm (*Melissa officinalis* L.) and its Effect on Plant Cell Wall Constituents

Ana Atanasova, Ani Petrova, Desislava Teneva, Manol Ognyanov, Yordan Georgiev, Nenko Nenov, Petko Denev



Supplementary Figure S1. Chromatograms from: A) HPLC determination of rosmarinic acid ($\lambda = 330$ nm) in accordance to the pharmacopoeia method described in section 2.6; RT of rosmarinic acid - 10.6 min; B) HPLC determination of phenolic compounds ($\lambda = 280$ nm) according to section 2.7.; RT: neochlorogenic acid – 2.1 min; caffeic acid - 4.8 min; rosmarinic acid – 21.2 min; luteolin – 31.3 min;



Supplementary Figure S2. Recovery of A) Total polyphenols and B) Rosmarinic acid from lemon balm dry leaves during continuous static maceration. Results are presented as mean values \pm standard deviation (SD). There are no significant differences among values marked with the same letters within individual groups.