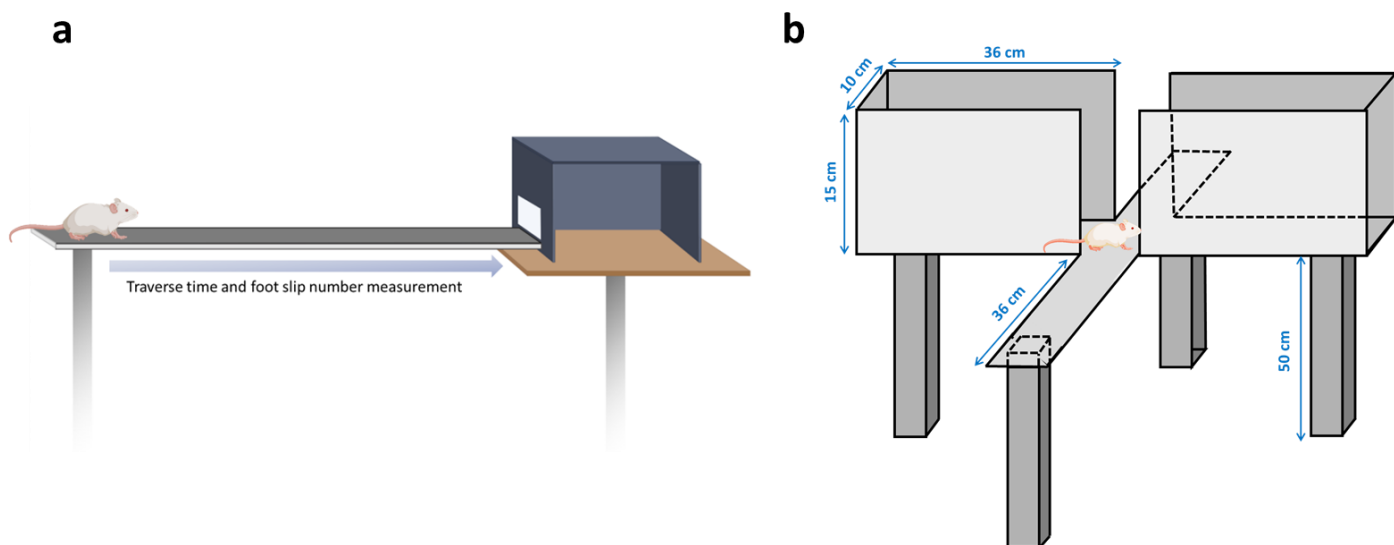


## Supplementary data



**Figure S1.** Schematics illustrating the apparatus of (a) the balance beam test and (b) elevated plus maze test.

**Table S1.** Effect of ginseng berry kombucha on serum AST, ALT, GLU, and LDH levels in mice

Time (h)		0	0.5	1	2
AST (U/L)	CON		460.00 ± 4.04	110.67 ± 54.78	68.00 ± 8.50
	KL	64.67 ± 14.24	112.33 ± 29.91**	65.33 ± 2.02	69.50 ± 9.20
	KH		76.50 ± 2.25**	74.25 ± 3.75	80.00±2.65
ALT (U/L)	CON		123.67 ± 18.91	49.67 ± 29.28	45.00 ± 14.64
	KL	33.00 ± 10.21	64.67 ± 2.90	34.50 ± 7.84	29.67 ± 5.01
	KH		44.33 ± 14.92**	41.33 ± 4.86	44.00 ± 5.20
GLU (U/L)	CON		236.00 ± 26.35	227.33 ± 38.02	144.00 ± 7.81
	KL	163.67 ± 32.83	141.00 ± 9.85	127.00 ± 5.50	159.33 ± 5.35
	KH		189.67 ± 12.06	228.67 ± 10.07	150.00 ± 20.22
LDH (U/L)	CON		881.50 ± 114.72	654.00 ± 115.94	628.33 ± 108.95
	KL	913.00 ± 46.95	1175.00 ± 130.81	1011.67 ± 300.31	757.00 ± 105.93
	KH		1053.00 ± 267.79	1370.25 ± 264.96	1523.50 ± 78.36

Values are mean ± standard error of the mean. GBK was administered orally 30 min before ethanol administration. \*\*\*p<0.001 vs. CON group (ANOVA followed by Tukey's test). ALT, alanine aminotransferase; AST, aspartate aminotransferase; GLU, glucose; LDH, lactate dehydrogenase; CON, control group; KL, low-dose GBK group (15 mg/kg); KH, high-dose GBK group (30 mg/kg).