

Figure S1. extraction and identification of CEC. **(A)** Flow chart for the isolation and culture of mice CECs. **(B)** Immunofluorescence staining of CECs with CD31 and VE-cadherin Scale bars: 50 μm .

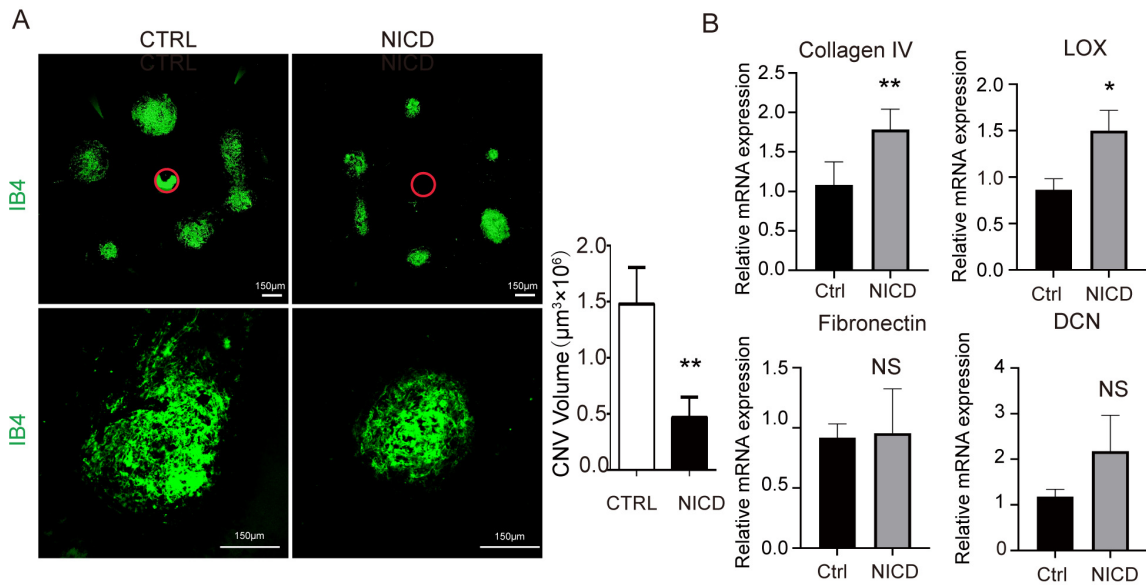


Figure S2. endothelial Notch signaling activation alleviates mice CNV injuries. **(A)** In laser induced CNV model, whole-mount choroidal for EC-specific NICD overexpressing mouse CDH5-CRE-NICD (NICD) and control mice (CTRL) were analyzed using IB-4 staining. IB-4 positive areas were quantitatively compared. Scale bars: 150 μm . **(B)** mRNA levels of ECM related genes DCN, collagen IV, fibronectin and LOX in choroidal tissue were tested in EC-specific NICD overexpressing mouse CDH5-CRE-NICD (NICD) and control mice (CTRL) at CNV day7 by qRT-PCR. Three biological replicates were performed and dates are present as the mean \pm SEM. NS, no significance, * $p < 0.05$, ** $p < 0.01$.