

## Supplementary Information

### **Gentirigeoside B from *G. rigescens* Franch Prolongs Yeast Lifespan via Inhibition of TORC1/Sch9/Rim15/Msn Signaling Pathway and Modification of Anti-Oxidative Stress and Autophagy**

Lan Xiang<sup>1\*</sup>, Dejene Disasa<sup>1&</sup>, Yanan Liu<sup>1&</sup>, Rui Fujii<sup>2</sup>, Mengya Yang<sup>1</sup>, Enchan Wu<sup>1</sup>, Akira Matsuura<sup>2</sup> and Jianhua Qi<sup>1\*</sup>

1. College of Pharmaceutical Science, Zhejiang University, 866 Yu Hang Road, Hangzhou, China, 11719053@zju.edu.cn (D.D.); liuyan1231@zju.edu.cn (Y. L.); 11819026@zju.edu.cn (M.Y.); 22019019@zju.edu.cn (E.W.)

2. Department of Biology, Graduate School of Science, Chiba University, Chiba 263-8522, Japan, afga1829@chiba-u.jp (R.F.); amatsuur@faculty.chiba-u.jp (A.M.)

& Represents equal contribution

\*Correspondence should be addressed to Lan Xiang (lxiang@zju.edu.cn); Jianhua Qi (qijianhua@zju.edu.cn); Tel and Fax: +86-571-8820-8627

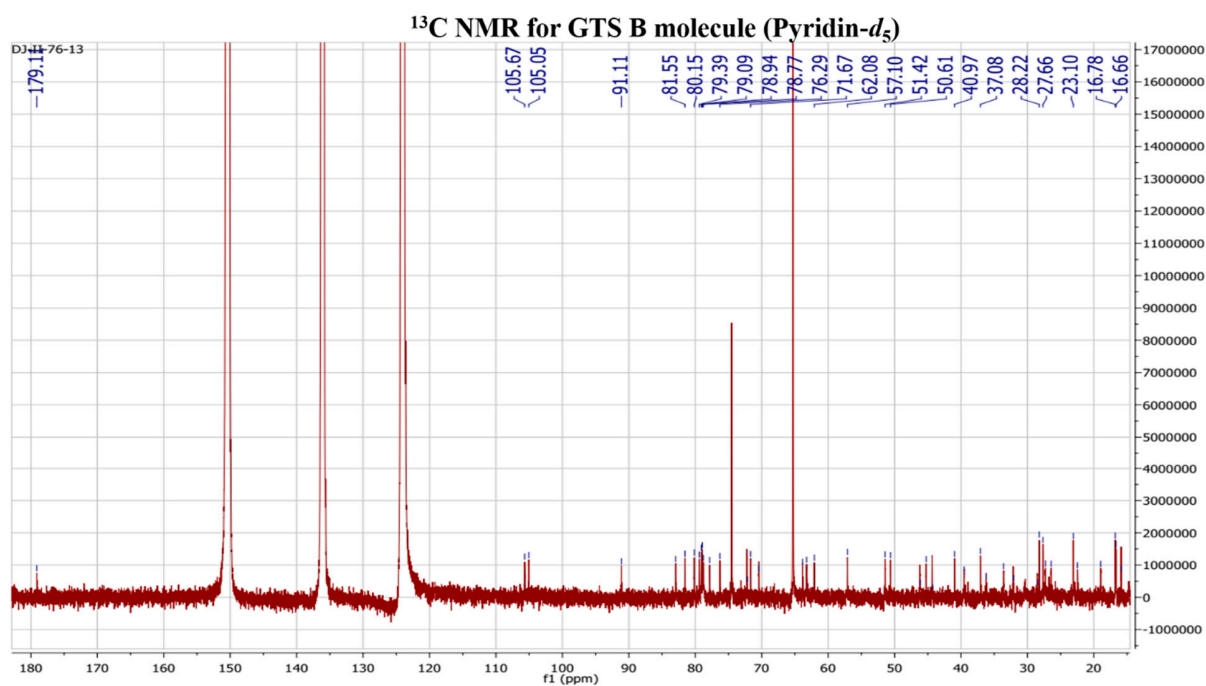
**Supplementary Table S1. List of primers sequence used for RT-PCR study.**

Genes	Species	Sequences	Gene ID
SOD1	Yeast	sense: 5'-CAC CAT TTT CGT CCG TCT TT-3'	853568
		antisense 5'-TGG TTG TGT CTC TGC TGG TC-3'	
SOD2	Yeast	sense: 5'-CTC CGG TCAAAT CAA CGA AT-3'	856399
		anti-sense: 5'-CCT TGG CCAGAA GAT CTG AG-3'	
GPx	Yeast	anti-sense: 5'-CCT TGG CCAGAA GAT CTG AG-3'	S000001509
		sense: 5'-CGC TCC GTC AAG TAA ACA TAG G-3'	
CAT	Yeast	anti-sense:5'-GGC CGC TGT TAT TGT TTT GAA C-3'	S000002664
		sense: 5'-TGA CAA ACT CCA CTG GTA ATC C-3'	
TUB1	Yeast	anti-sense: 5'-TCC CTG TTG AAA TGA GCC AA-3'	854889
		sense: 5'-CCA AGG GCT ATT TAC GTG GA-3'	
TORC1	Yeast	sense: 5'-TTG GTA CAA GGC ATG GCA TA-3'	S000218103
		anti-sense: 5'-TAC CGT CAA TCC GCA CAT TA-3'	
SIR2	Yeast	sense: 5'-CGT TCC CCA AGT CCT GAT TA-3'	851520
		anti-sense: 5'-CCA CAT TTT TGG GCT ACC AT-3'	
RPS26A	Yeast	sense: 5'-TCA GAA ACA TTG TTG AAG CCG C-3'	852686
		anti-sense: 5'-ACA ATT CTG GCG TGA ATA GCA C-3'	
RPL9A	Yeast	sense: 5'-ATG GTG CCA AAT TCA TTG AAG TC-3'	852730
		anti-sense 5'-AGTTACCTGACAAGACAATTTTCG-3'	
SCH9	Yeast	sense:5'-GCC ATT GAT GAT GGA AGA GAA CTAC-3'	856612
		anti-sense:5'- TCATATTTTGAATCTTCCACTGAC-3'	
RIM15	Yeast	sense: 5'-GGA GCT GGA ACT GGA CGG CAAG -3'	850511
		anti-sense: 5'-AGC ATG TCT GTG GCC TTT TGAA-3'	
MSN2	Yeast	sense: 5'-AGA ACG ATA TGC TGC CGA ATTC-3'	855053
		anti-sense: 5'-CGCCACTTTTCGCAATAACG-3'	
MSN4	Yeast	sense: 5'-GGATTGATGGACCCGGTATTG-3'	853803
		anti-sense: 5'-CCAAAGGTATATTCCGGCGAA-3'	

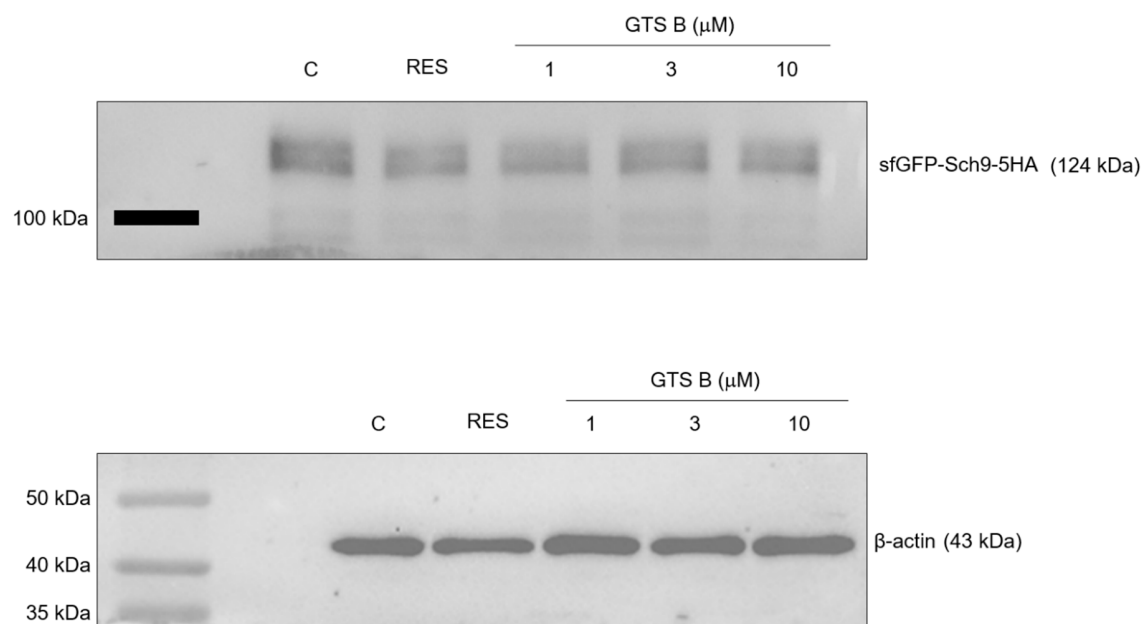
**Supplementary Table S2. Yeast strains were used in the present study.**

Strains	Genome-type	Source
K6001	MAta, Ade2-1, trp1-1, can1-100, leu2-3, 112, his-3-11, 15, GAL, psi+, ho::HO::CDC6 (at HO), cdc6::hisG, URA3 GAL-ubiR-CDC6 (URA3)	Gifted by Prof. Michael Breitenbach
<i>Δuth1</i> , <i>Δskn7</i> , <i>Δcat</i> , <i>Δgpx</i> , <i>Δsod1</i> , <i>Δsod2</i> with K6001 background	Replacement of UTH1, SKN7, SOD1 and SOD2 with Kanamycin gene.	Constructed by professor Akira Matsuura
BY4741	Mata, his3Δ1, Leu2Δ0, met15Δ0, ura3Δ0	Constructed by professor Akira Matsuura
MSN2-GFP yeast with BY4741 background	Mata, his3Δ1, Leu2Δ0, met15Δ0, ura3Δ0; MSN2-GFP::KanMX	Constructed by professor Akira Matsuura
sfGFP-SCH9 yeast with BY4741 background	Mata, his3Δ1, Leu2Δ0, met15Δ0, ura3Δ0; sfGFP-SCH9-5HA::LEU2	Constructed by professor Akira Matsuura
RIM15-GFP yeast with BY4741 background	Mata, his3Δ1, Leu2Δ0, met15Δ0, ura3Δ0, RIM15-GFP::His3MX	Constructed by professor Akira Matsuura
YOM36	Prototrophic derivative of BY4742 (MAT $\alpha$ , his3Δ1, leu2Δ0, lys2Δ0, ura3Δ0)	Gifted by professor Akira Matsuura
YOM38 containing plasmid pR316-GFP-ATG8	Prototrophic derivative of BY4742 (MAT $\alpha$ , his3Δ1, leu2Δ0, lys2Δ0, ura3Δ0) containing plasmid pR316-GFP-ATG8	Constructed by professor Akira Matsuura

## Supplementary Figures



**Supplementary Figure S1.** The <sup>13</sup>C NMR spectrum of Gentirigeoside B from *G. rigescens* Franch L.



**Supplementary Figure S2.** The original results of western blotting analysis for Sch9 in Figure 3(b).