

Supplementary Materials

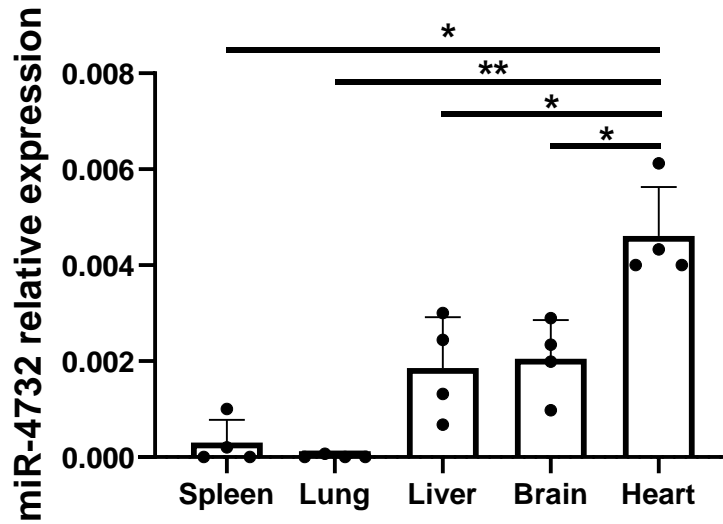
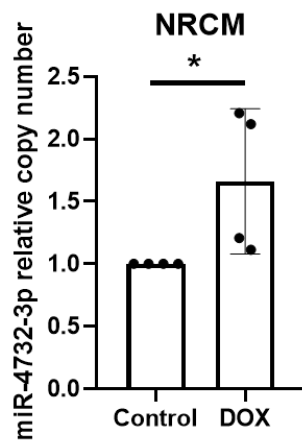


Figure S1. Expression of miR-4732-3p on different tissues from adult Wistar rats without treatment. Levels of miR-4732-3p have been relativized to levels of the small nuclear RNA U6. Data are represented as mean \pm standard deviation. * $p < 0.05$, ** $p < 0.005$.

A



B

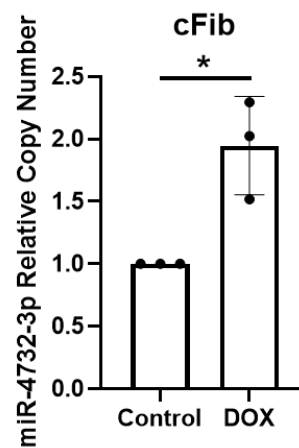


Figure S2. Relative copy number of miR-4732-3p. (A) Relative copy number of miR-4732-3p in NRCMs after doxorubicin treatment (1 μ M, 48 h). (B) Relative copy number of miR-4732-3p in cFib after doxorubicin treatment (1 μ M 48 h). Data are represented as mean \pm standard deviation. * $p < 0.05$.

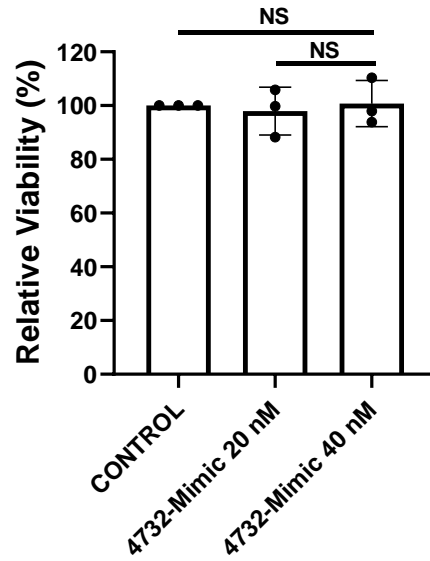


Figure S3. Effect of 4732-Mimic transfection on NRCM. NRCM were transfected with 4732-Mimic for 24 h at two different doses (20 and 40 nM) and cell viability was assessed by CCK8. Data are represented as mean \pm standard deviation. NS = not significant.

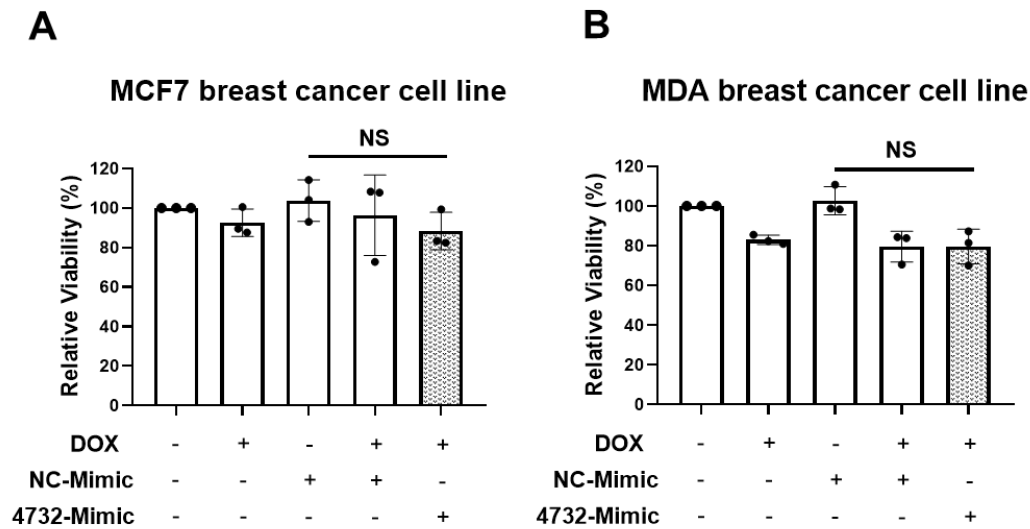


Figure S4. Effect of miR-4732-3p administration in breast cancer cell lines. (A) Relative viability of MCF7 breast cancer cells after NC-Mimic or 4732-Mimic transfection (40 nM) and doxorubicin treatment (1 μ M, 48 h). (B) Relative viability of MDA breast cancer cells after NC-Mimic or 4732-Mimic transfection (40 nM) and doxorubicin treatment (1 μ M, 48 h). Data are represented as mean \pm standard deviation. NS = not significant.

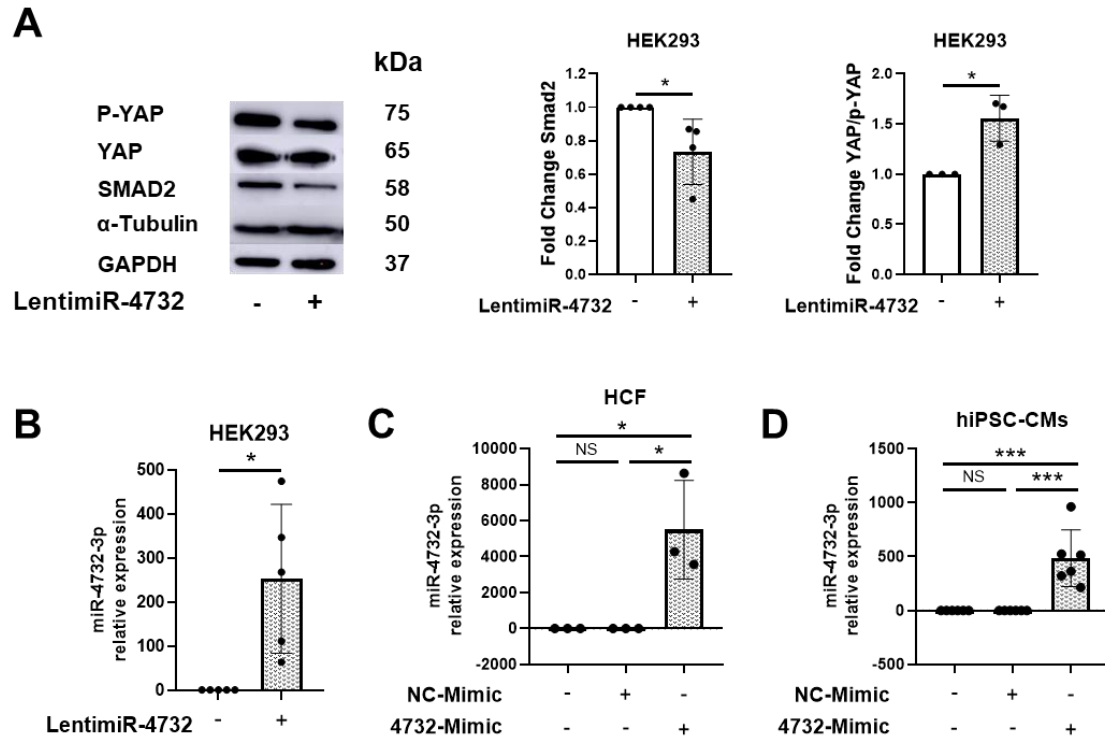


Figure S5. Identification and validation of miR-4732-3p target genes. **(A)** Representative Western blots of p-YAP, YAP, and Smad2 in HEK 293 non-infected or transduced with a lentivirus expressing miR-4732-3p. Relative levels were quantified by densitometry relative to the levels of HEK 293 without transduction. GAPDH was used as a loading control for p-YAP and YAP and α -tubulin was used as a loading control for Smad2. **(B)** Relative expression of miR-4732-3p in HEK 293 control or infected with the Lenti-miR-4732. **(C)** Relative expression of miR-4732-3p in HCF transfected using lipofectamine with either NC-Mimic or 4732-Mimic. **(D)** Relative expression of miR-4732-3p in hiPSC-CM transfected with either NC-Mimic or 4732-Mimic. Data are represented as mean \pm standard deviation. NS = not significant * $p < 0.05$, ** $p < 0.01$, *** $p < 0.001$.