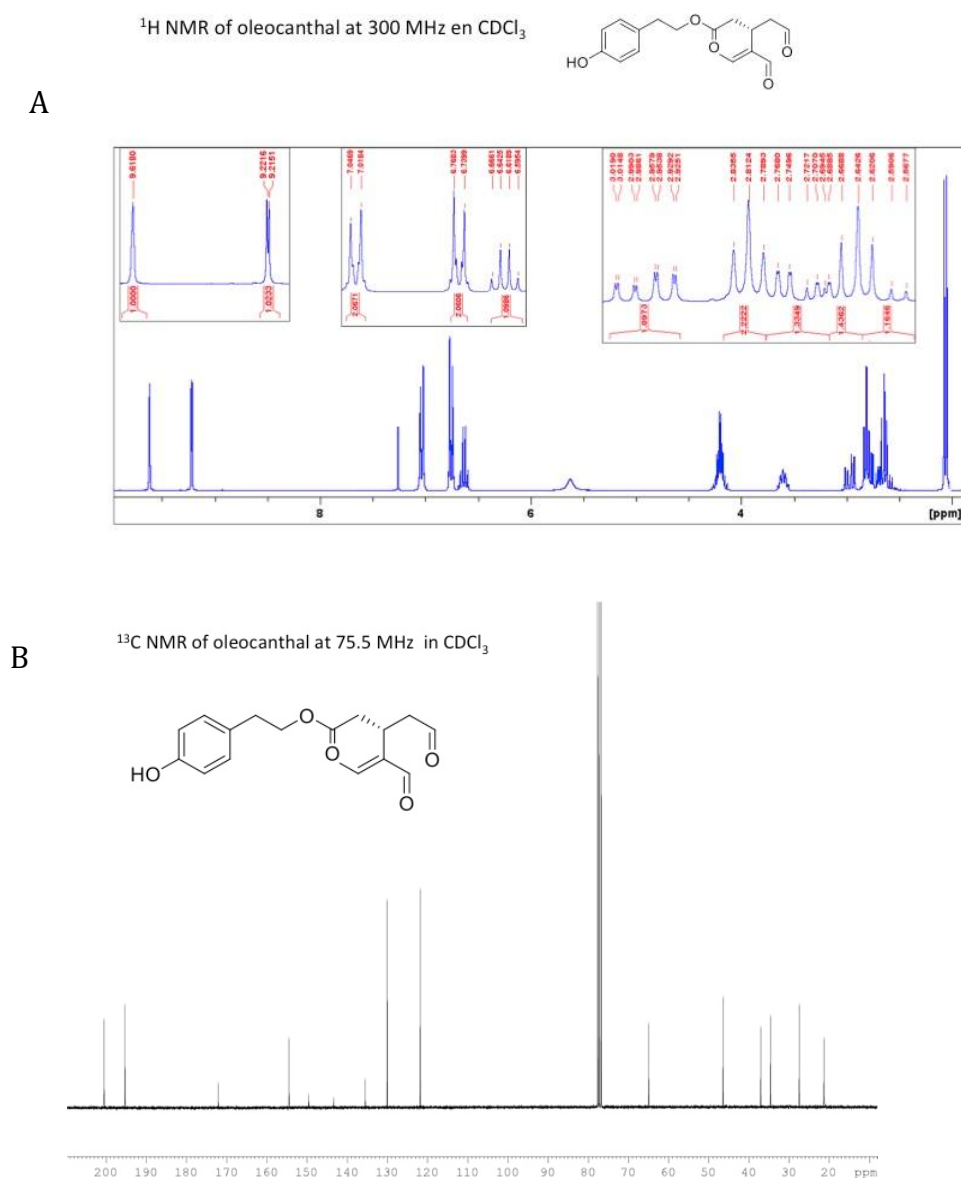


## Supplementary Materials



**Figure S1:** The purity of the extracted OLE was based on the <sup>1</sup>H and <sup>13</sup>C NMR spectra and HPLC analyses. (A) <sup>1</sup>H NMR and (B) <sup>13</sup>C NMR of OLE at 300 and 75.5 MHz in CDCl<sub>3</sub>, respectively. NMR spectra were registered in CDCl<sub>3</sub> in a Bruker Avance-300 spectrometer.