

Anti-Inflammatory and Anti-Hyperuricemia Effects of Chrysin on High Fructose Corn Syrup-Induced Hyperuricemia Rats via Ameliorates of Urate Transporters and the Inhibition of NLRP3 Inflammasome Signaling Pathway

Yi-Hsien Chang¹, Yi-Fen Chiang^{2†}, Hsin-Yuan Chen^{2,4}, Yun-Ju Huang², Kai-Lee Wang³,

Yong-Han Hong⁴, Mohamed Ali⁵, Tzong-Ming Shieh⁶, Shih-Min Hsia^{1,2,6,7*}

¹ Graduate Institute of Metabolism and Obesity Sciences, College of Nutrition, Taipei Medical University, Taipei, Taiwan; peggy4103@gmail.com (Y.-S.C.)

² School of Nutrition and Health Sciences, College of Nutrition, Taipei Medical University, Taipei 11031, Taiwan; yvonne840828@gmail.com (Y.-F.C.); hsin246@gmail.com (H.-Y.C.); d04641004@ntu.edu.tw (Y.-J.H.);

³ Department of Nursing, Ching Kuo Institute of Management and Health, Keelung 20301, Taiwan; kellywang@tmu.edu.tw

⁴ Department of Nutrition, I-Shou University, Kaohsiung 84001, Taiwan; hsin246@gmail.com (H.-Y.C.); yonghan@isu.edu.tw (Y.-H. H)

⁵ Clinical Pharmacy Department, Faculty of Pharmacy, Ain Shams University, 11566 Cairo, Egypt; mohamed.aboouf@pharma.asu.edu.eg (M.A.)

⁶ School of Dentistry, College of Dentistry, China Medical University, Taichung 40402, Taiwan.; tmshieh@mail.cmu.edu.tw (T.-M.S.)

⁷ School of Food and Safety, Taipei Medical University, Taipei 11031, Taiwan

⁸ Nutrition Research Center, Taipei Medical University Hospital, Taipei 11031, Taiwan

* Correspondence: bryanhsia@tmu.edu.tw (S.-M.H.); Tel.: +886-273-61661-6558

† Equal contribution.

Supplementary Table 1.

Effects of chrysin on tissue weights, and tissue index in HFCS induced hyperuricemic rats

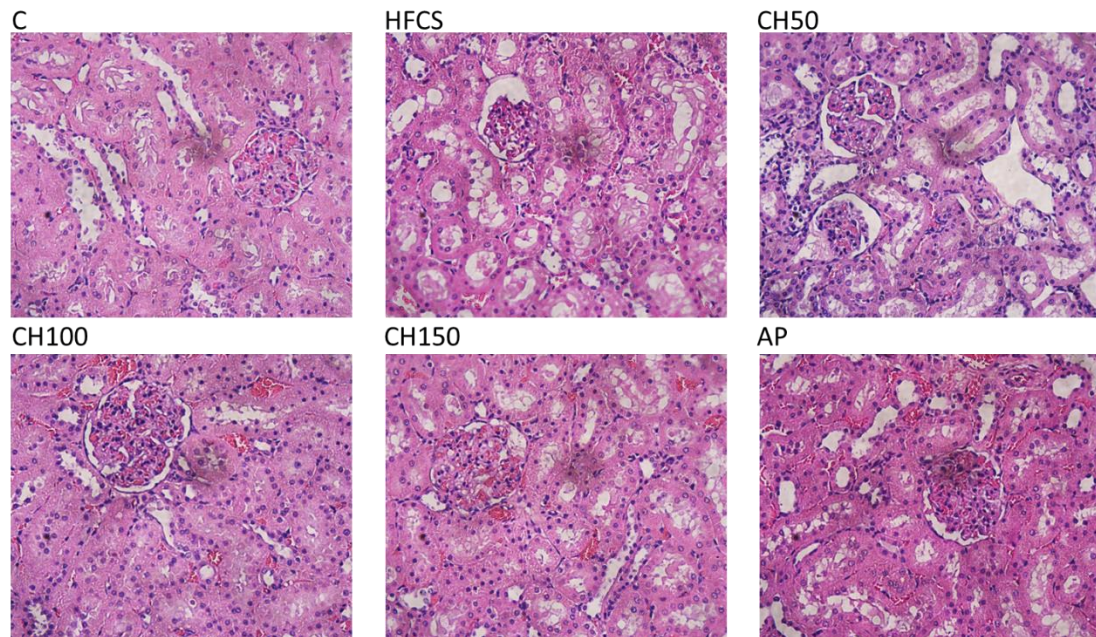
Group	Kidney weight(g)	Kidney index(%)	Liver weight(g)	Liver index(%)
Control	4.18±0.56	0.82±0.08	15.67±2.42	3.05±0.26
HFCS	4.27±0.40	0.81±0.06	19.22±3.73	3.62±0.45
CH 50	4.58±0.47	0.91±0.06	18.13±1.84	3.54±0.34
CH 100	4.31±0.32	0.90±0.09	17.34±1.62	3.52±0.29
CH 150	4.25±0.21	0.87±0.06	17.52±2.84	3.34±0.26
AP	4.71±0.34	0.82±0.05	18.40±2.47	3.53±0.41

Tissue index (%) = (tissue weight / body weight) × 100

Data are means ± S.E.M. (n=8-9 per group). HFCS, high-fructose corn syrup group (10 % high-fructose corn syrup solution); AP, positive control group (Allopurinol: 10 mg/kg BW); CH 50: chrysin (50 mg/kg BW); CH 100: chrysin (100 mg/kg BW); CH 150: chrysin (150 mg/kg BW).

Supplementary Figure 1.

Effects of chrysin on kidney histology in HFCS induced hyperuricemic rats



Representative images of kidney H&E staining.

Data are means \pm S.E.M. (n=8-9 per group). HFCS, high-fructose corn syrup group (10 % high-fructose corn syrup solution); AP, positive control group (Allopurinol: 10 mg/kg BW); CH 50: chrysin (50 mg/kg BW); CH 100: chrysin (100 mg/kg BW); CH 150: chrysin (150 mg/kg BW).