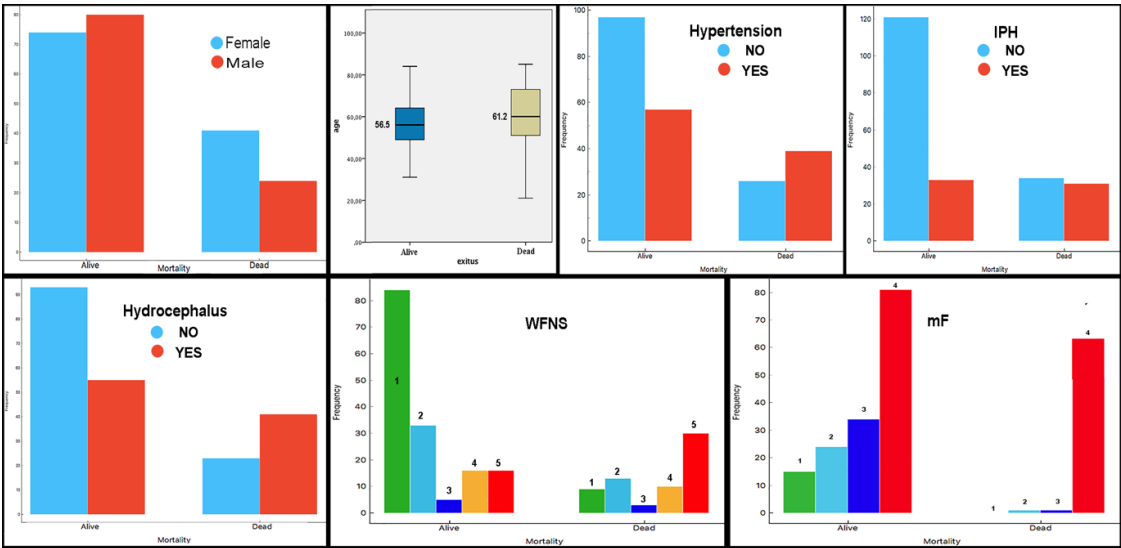


SUPPLEMENTARY MATERIALS



Supplementary Figure S1. Distribution of mortality according to Risk factors: **A:** Sex; **B:** Age; **C:** Hypertension (HT); **D:** Intraparenchymal hematoma (IPH); **E:** Acute Hydrocephalus; **F:** WFNS and **G:** Modified Fisher (mF).

Supplementary Table S1. CT scan protocol parameters. *CTDIvol*: Computed Tomography Dose Index volume.

Manufacturer	PHILIPS	SIEMENS
Model	Ingenuity CT	Somatom
Scan Mode	Spiral	Spiral
Tube Voltage (kV)	120	120
Exposure(mAs)	189-221	199-262
Average CTDIvol (mGy)	48	57
Rotation Time (s)	0.4	1
Collimation	64x 0.625	64x0.625
Pitch factor	0.3	0.5
Slice Thickness(mm)	3-4	2-4
Number of slices	64-99	66-150
Field of view (mm)	250	250
Samples per pixel	1	1
CT detector array	512x512	512x512

Supplementary Table S2. Performance of Neural Networks Algorithms. Results for classes.
FDR: False Discovery Rate; FN: False Negative; FP: False Positive; R: Rate; TN: True Negative;
TP: True Positive.

		Image-based Neural Network performance				Image and Metadata based Neural Network performance			
Class	Metric	Best AUC	Best F1	Best Loss	Last	Best AUC	Best F1	Best Loss	Last
ALIVE	TP	27	25	19	22	29	24	23	30
	TN	2	5	11	10	3	9	8	0
	FP	11	8	2	3	10	4	5	13
	FN	3	5	11	8	1	6	7	0
	Sensitivity	0.90	0.83	0.63	0.73	0.97	0.80	0.77	1
	Specificity	0.15	0.38	0.85	0.77	0.23	0.69	0.62	0
	Precision	0.71	0.76	0.90	0.88	0.74	0.86	0.82	0.70
	FPR	0.85	0.62	0.15	0.23	0.77	0.31	0.38	1
	FNR	0.10	0.17	0.37	0.27	0.03	0.20	0.23	0.00
	FDR	0.29	0.24	0.10	0.12	0.26	0.14	0.18	0.30
	Accuracy	0.67	0.70	0.70	0.74	0.74	0.77	0.72	0.70
	F1	0.79	0.79	0.75	0.80	0.84	0.83	0.79	0.82
	AUC	0.72	0.74	0.73	0.82	0.78	0.80	0.78	0.35
DEAD	TP	2	5	11	10	3	9	8	0
	TN	27	25	19	22	29	24	23	30
	FP	3	5	11	8	1	6	7	0
	FN	11	8	2	3	10	4	5	13
	Sensitivity	0.15	0.38	0.85	0.77	0.23	0.69	0.62	0
	Specificity	0.90	0.83	0.63	0.73	0.97	0.80	0.77	1.00
	Precision	0.40	0.50	0.50	0.56	0.75	0.60	0.53	-
	FPR	0.10	0.17	0.37	0.27	0.03	0.20	0.23	0
	FNR	0.85	0.62	0.15	0.23	0.77	0.31	0.38	1
	FDR	0.60	0.50	0.50	0.44	0.25	0.40	0.47	-
	Accuracy	0.67	0.70	0.70	0.74	0.74	0.77	0.72	0.70
	F1	0.22	0.43	0.63	0.65	0.35	0.64	0.57	0
	AUC	0.72	0.74	0.73	0.82	0.78	0.80	0.78	0.35