

supplementary

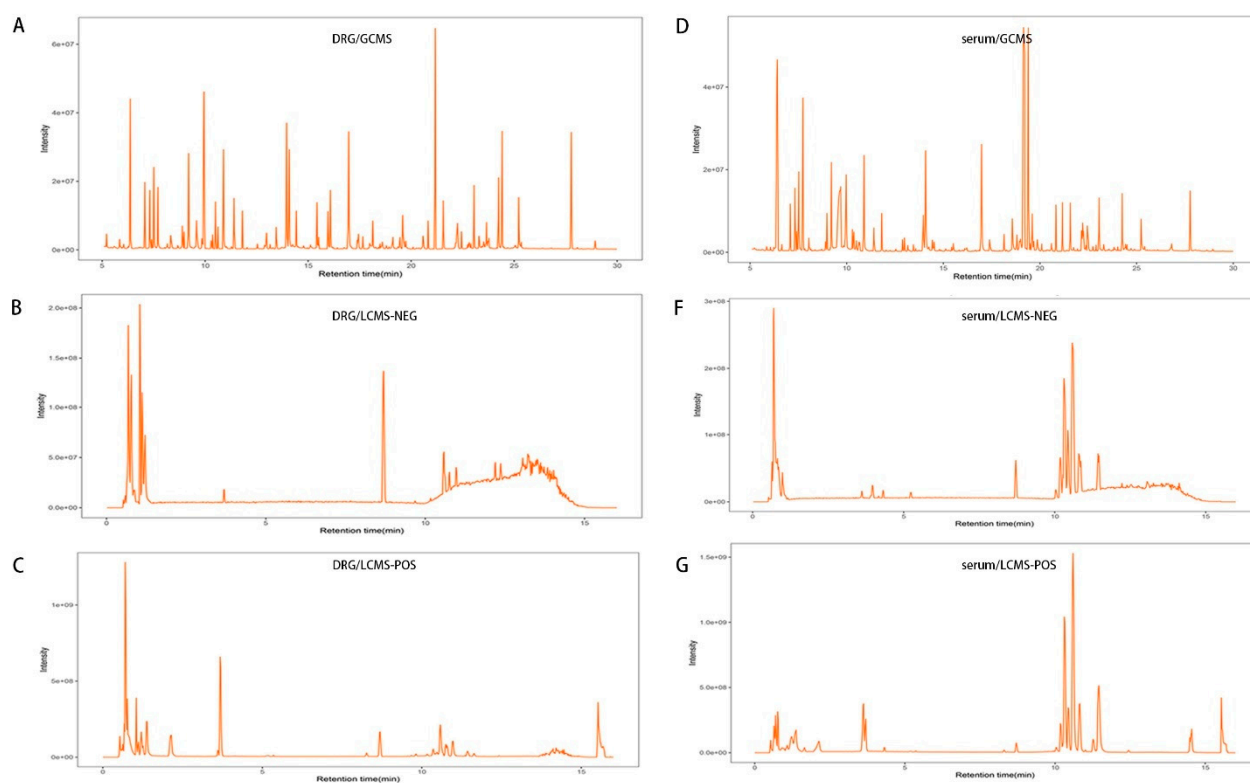


Figure S1. Total ion chromatogram of DRG extract acquired by GC-MS (A). The base peak chromatograms (BPIs) of DRG extract acquired by LC-MS in the positive (B) and negative (C) ion modes. Total ion chromatogram of serum extract acquired by GC-MS (D). The base peak chromatograms (BPIs) of serum extract acquired by LC-MS in the positive (F) and negative (G) ion modes.