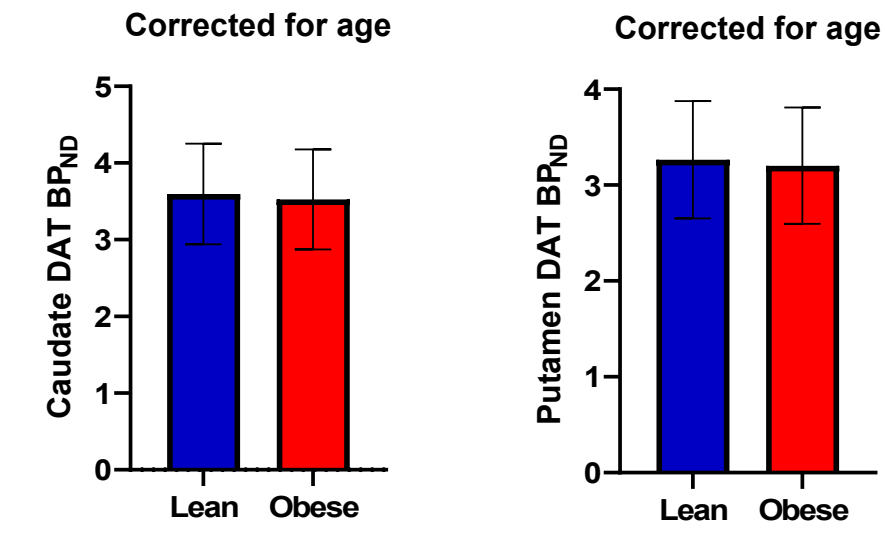


SUPPLEMENTAL FIGURE S1

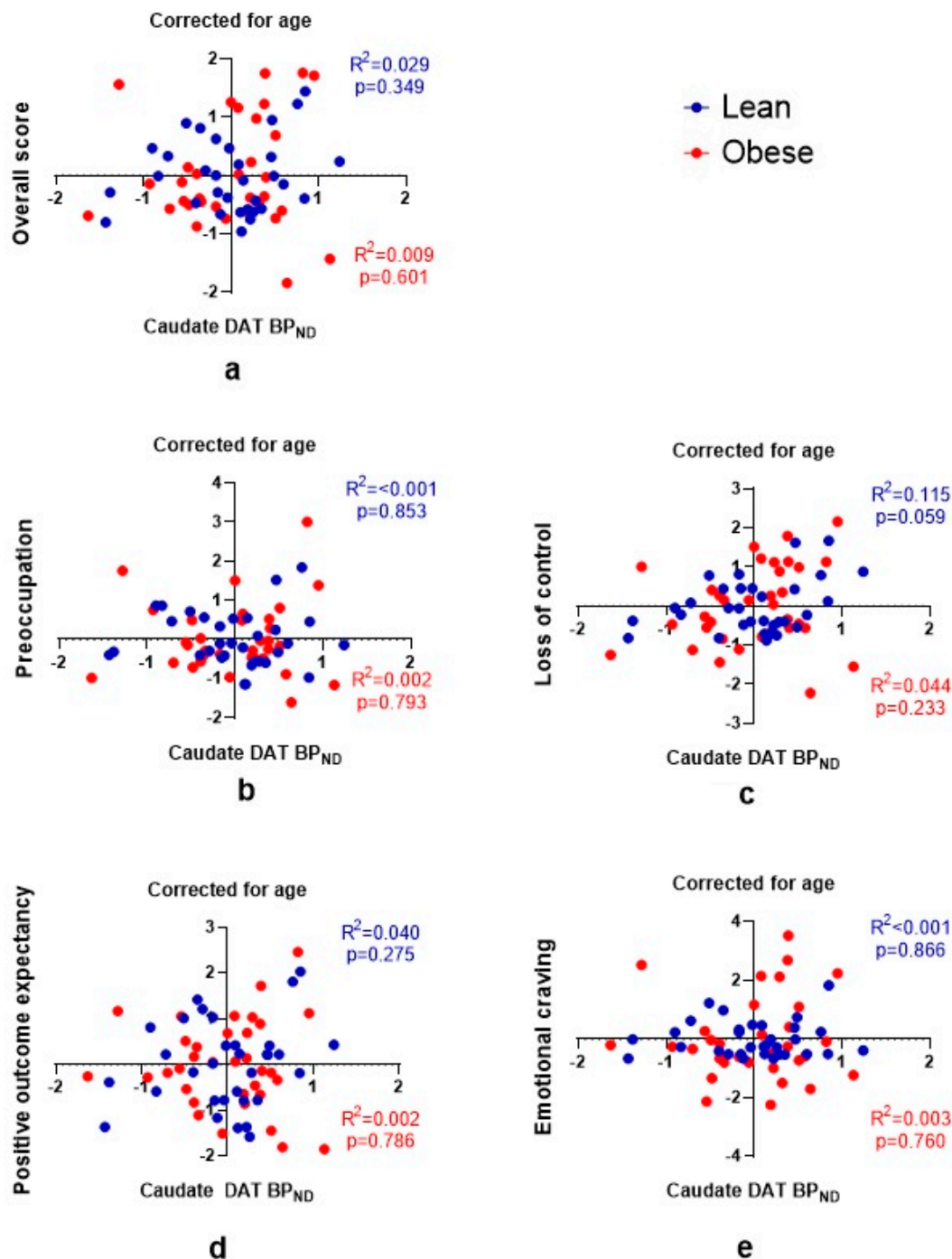
DAT BP_{ND} in the Caudate and Putamen.



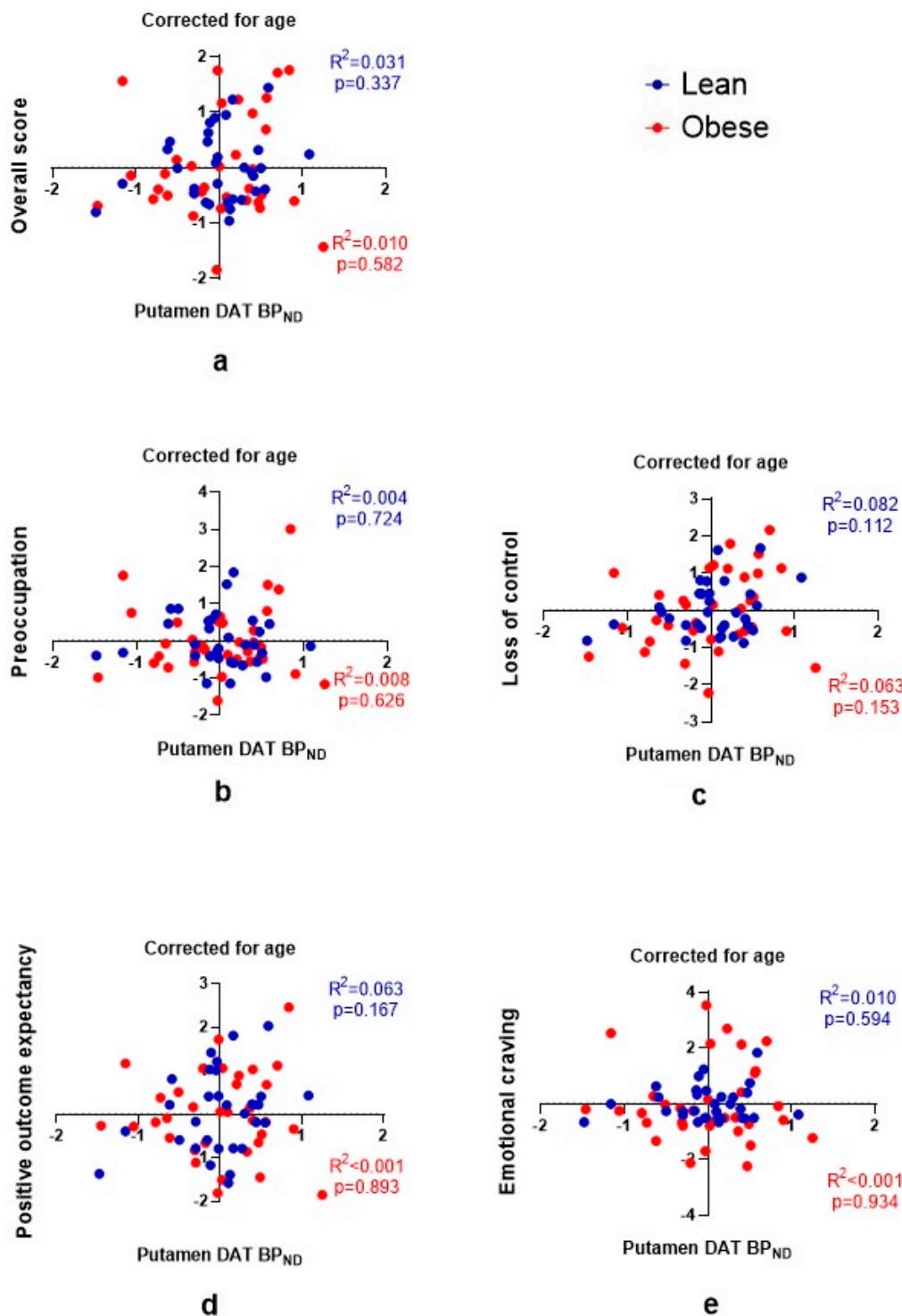
Supplemental figure S1. DAT BP_{ND} (mean \pm SD) in the **(A)** Caudate and **(B)** Putamen did not differ significantly between lean subjects and subjects with obesity after controlling for age (one-way ANCOVA).

SUPPLEMENTAL FIGURES S2AB

Sub regional partial regression analysis adjusted for age between DAT BP_{ND} and G-FCQ-T scores.



Supplemental figure S2 A. Partial regression plots showing no linear relationship between caudate DAT availability and G-FCQ-T scores for (a) the overall score, and the subscale scores (b) “preoccupation”, (c) “loss of control”, (d) “positive outcome expectancy”, (e) “emotional craving”, after adjusting for age in lean subjects and subjects with obesity. Blue dots: lean subjects; red dots: subjects with obesity.



Supplemental figure S2 B. Partial regression plots showing no linear relationship between putamen DAT availability and G-FMQ-T scores for **(a)** the overall score, and the subscale scores **(b)** “preoccupation”, **(c)** “loss of control”, **(d)** “positive outcome expectancy”, **(e)** “emotional craving”, after adjusting for age in lean subjects and subjects with obesity. Blue dots: lean subjects; red dots: subjects with obesity.