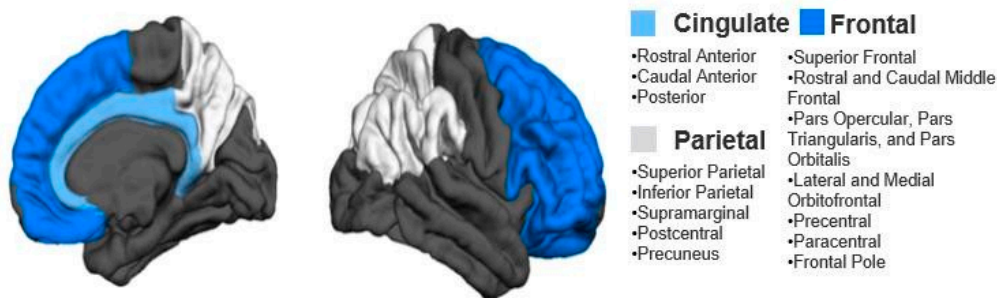
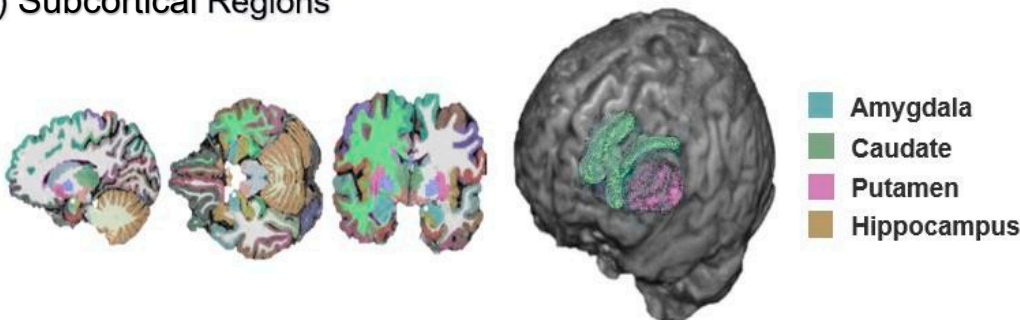


# Supplementally Martials

a) Cortical Regions



b) Subcortical Regions



**Supplementary Figure S1.** Comparison between cortical and subcortical regions in the Desikan-Killiany atlas. The labels highlight some of the structures.

**Supplementary Table S1.** List of the anatomical regions of the Desikan-Killiany atlas.

Cortical regions						
Label number	Label Name	Name	Label number	Label Name	Name	Lobe
1	lh_bankssts	Banks of superior temporal sulcus	35	rh_bankssts	Banks of superior temporal sulcus	
2	lh_caudalanteriorcingulate	Caudal anterior cingulate cortex	36	rh_caudalanteriorcingulate	Caudal anterior cingulate cortex	Frontal
3	lh_caudalmiddlefrontal	Caudal middle frontal gyrus	37	rh_caudalmiddlefrontal	Caudal middle frontal gyrus	Frontal
4	lh_cuneus	Cuneus	38	rh_cuneus	Cuneus	Occipital
5	lh_entorhinal	Entorhinal cortex	39	rh_entorhinal	Entorhinal cortex	Temporal
6	lh_fusiform	Fusiform gyrus	40	rh_fusiform	Fusiform gyrus	Temporal
7	lh_inferiorparietal	Inferior parietal lobule	41	rh_inferiorparietal	Inferior parietal lobule	Parietal

8	lh_inferiortemporal	Inferior temporal gyrus	42	rh_inferiortemporal	Inferior temporal gyrus	Temporal
9	lh_lateraloccipital	Lateral occipital gyrus	43	rh_lateraloccipital	Lateral occipital gyrus	Occipital
10	lh_lateralorbitofrontal	Lateral orbitofrontal gyrus	44	rh_lateralorbitofrontal	Lateral orbitofrontal gyrus	Frontal
11	lh_lingual	Lingual gyrus	45	rh_lingual	Lingual gyrus	Occipital
12	lh_medialorbitofrontal	Medial orbitofrontal gyrus	46	rh_medialorbitofrontal	Medial orbitofrontal gyrus	Frontal
13	lh_middletemporal	Middle temporal gyrus	47	rh_middletemporal	Middle temporal gyrus	Temporal
14	lh_parahippocampal	Parahippocampal gyrus	48	rh_parahippocampal	Parahippocampal gyrus	Temporal
15	lh_paracentral	Paracentral gyrus	49	rh_paracentral	Paracentral gyrus	Frontal
16	lh_parsopercularis	Pars opercularis	50	rh_parsopercularis	Pars opercularis	Frontal
17	lh_parsorbitalis	Pars orbitalis	51	rh_parsorbitalis	Pars orbitalis	Frontal
18	lh_parstriangularis	Pars triangularis	52	rh_parstriangularis	Pars triangularis	Frontal
19	lh_pericalcarine	Pericalcarine gyrus	53	rh_pericalcarine	Pericalcarine gyrus	Occipital
20	lh_postcentral	Postcentral gyrus	54	rh_postcentral	Postcentral gyrus	Parietal
21	lh_posteriorcingulate	Posterior cingulate cortex	55	rh_posteriorcingulate	Posterior cingulate cortex	Parietal
22	lh_precentral	Precentral gyrus	56	rh_precentral	Precentral gyrus	Frontal
23	lh_precuneus	Precuneus	57	rh_precuneus	Precuneus	Parietal
24	lh_rostralanteriorcingulate	Rostral anterior cingulate cortex	58	rh_rostralanteriorcingulate	Rostral anterior cingulate cortex	Frontal
25	lh_rostralmiddlefrontal	Rostral middle frontal gyrus	59	rh_rostralmiddlefrontal	Rostral middle frontal gyrus	Frontal
26	lh_superiorfrontal	Superior frontal gyrus	60	rh_superiorfrontal	Superior frontal gyrus	Frontal
27	lh_superiorparietal	Superior parietal lobule	61	rh_superiorparietal	Superior parietal lobule	Parietal
28	lh_superiortemporal	Superior temporal gyrus	62	rh_superiortemporal	Superior temporal gyrus	Temporal
29	lh_supramarginal	Supramarginal gyrus	63	rh_supramarginal	Supramarginal gyrus	Parietal
30	lh_frontalpole	Frontal pole	64	rh_frontalpole	Frontal pole	Frontal
31	lh_temporalpole	Temporal pole	65	rh_temporalpole	Temporal pole	Temporal
32	lh_transversetemporal	Transverse temporal gyrus	66	rh_transversetemporal	Transverse temporal gyrus	Temporal
33	lh_insula	Insula	67	rh_insula	Insula	
34	lh_isthmuscingulate	Isthmus cingulate	68	rh_isthmuscingulate	Isthmus cingulate	
<b>Sub-Cortical regions</b>						
69	Left-Thalamus-Proper	Thalamus	85	Right-Caudate	Caudate nucleus	
70	Left-Hippocampus	Hippocampus	86	Right-Amygdala	Amygdala	
71	Left-Caudate	Caudate nucleus	87	Right-Accumbens-area	Nucleus Accumbens	

72	Left-Amygdala	Amygdala	88	Right-Lateral-Ventricle	Lateral ventricles	
73	Left-Accumbens-area	Nucleus Accumbens	89	Right-Inf-Lat-Vent		
74	Left-Lateral-Ventricle	Lateral ventricles	90	Right-Cerebellum-White-Matter	Cerebellum-White-Matter	
75	Left-Inf-Lat-Vent		91	Right-Cerebellum-Cortex	Cerebellum-Cortex	
76	Left-Cerebellum-White-Matter	Cerebellum-White-Matter	92	Right-Putamen	Putamen	
77	Left-Cerebellum-Cortex	Cerebellum-Cortex	93	Right-Pallidum	Pallidum	
78	Left-Putamen	Putamen	94	Right-choroid-plexus	Choroid-plexus	
79	Left-Pallidum	Pallidum	95	Right-VentralDC	VentralDC	
80	Left-choroid-plexus	Choroid-plexus	96	Right-vessel	Vessel	
81	Left-VentralDC	VentralDC	97	3rd-Ventricle	Ventricle	
82	Left-vessel	Vessel	98	4th-Ventricle		
83	Right-Thalamus-Propor	Thalamus	99	5th-Ventricle		
84	Right-Hippocampus	Hippocampus	100	Surfaces holes		

**Supplementary Table S2.** Experiment 1: Baseline classifiers' performance using 10-fold CV on training data (n = 510, ABIDE datasets) and prediction on test data (n = 128, ABIDE datasets; n = 33, King Abdulaziz University).

Algorithm	Feature set / Number of features	Model Performance	Prediction Performance			KAU		
		Mean Accuracy	ABIDE I + ABIDE II Accuracy	Sensitivity	Specificity	Accuracy	Sensitivity	Specificity
Experiment 1 : Baseline models								
DT	F1: cortical region's volumes/ 66	54.71	54.91	53.91	53.63	48.48	48.48	47.74
NB		55.69	65.06	64.06	60.16	63.64	63.64	58.08
SVM		59.80	67.41	66.41	64.94	69.7	69.7	68.99
RF		61.57	63.5	62.5	62.06	57.58	57.58	58.46
XGB		59.61	58.81	57.81	57.51	57.58	57.58	57.52
CatBoost		62.94	58.81	57.81	56.76	63.64	63.64	61.84
MLP		55.69	60.38	59.38	57.86	63.64	63.64	61.84
DT	F2: volumes of sub-cortical regions / 68	54.12	54.13	53.13	52.70	57.58	57.58	53.76
NB		57.45	63.5	62.5	59.06	63.64	63.64	59.02
SVM		61.18	61.94	60.94	60.46	69.7	69.7	67.11
RF		54.90	61.94	60.94	59.96	69.7	69.7	67.11
XGB		58.24	61.16	60.16	58.78	60.61	60.61	61.09
CatBoost		59.02	65.06	64.06	62.66	72.73	72.73	70.68
MLP		55.1	58.03	57.03	56.08	54.55	54.55	53.95
DT	F3: surface area of sub-cortical regions / 70	51.37	54.13	53.13	51.95	57.58	57.58	56.58
NB		55.69	62.72	61.72	58.13	69.7	69.7	64.29
SVM		57.25	68.97	67.97	67.04	72.73	72.73	69.74
RF		57.45	58.03	57.03	55.33	72.73	72.73	70.68
XGB		56.86	58.03	57.03	56.08	48.48	48.48	46.81
CatBoost		59.61	62.72	61.72	60.39	54.55	54.55	53.01
MLP		58.82	54.91	53.91	54.13	54.55	54.55	54.89
DT	F4: cortical thickness of sub-cortical regions / 70	53.14	54.13	53.13	51.18	45.46	45.46	43.23
NB		55.29	64.28	63.28	58.63	54.55	54.55	48.31
SVM		62.16	63.5	62.5	59.93	72.73	72.73	67.86
RF		61.57	59.59	58.59	56.38	63.64	63.64	58.08
XGB		60.78	59.59	58.59	57.93	72.73	72.73	69.74
CatBoost		63.73	61.16	60.16	58.03	72.73	72.73	67.86
MLP		59.61	58.81	57.81	56.52	39.39	39.39	42.67
DT	F5: mean curvatures of sub-cortical regions / 68	56.47	61.94	60.94	59.96	54.55	54.55	51.13
NB		59.41	65.06	64.06	59.66	66.67	66.67	64.47
SVM		62.35	65.06	64.06	61.91	63.64	63.64	57.14
RF		61.96	65.84	64.84	63.33	60.61	60.61	59.21
XGB		59.80	60.38	59.38	58.11	51.52	51.52	49.44
CatBoost		64.12	69.75	68.75	67.47	63.64	63.64	62.78
MLP		59.22	64.28	63.28	62.24	48.48	48.48	43.99
DT	F6: all features / 342	56.67	60.38	67.19	63.11	54.55	54.55	53.01
NB		56.47	68.19	62.5	61.06	63.64	63.64	57.14
SVM		64.12	63.5	64.84	63.59	60.61	60.61	55.45
RF		65.29	65.84	62.5	61.56	48.48	48.48	44.92
XGB		62.94	63.5	62.5	60.56	48.48	48.48	44.92
CatBoost		63.73	63.5	65.63	64.77	51.52	51.52	47.56
MLP		59.22	66.63	62.5	61.56	60.61	60.61	57.33

**Supplementary Table S3.** Experiment 1: classifier performance with random search on training data (n = 510, ABIDE) and prediction results on test data (n = 128, ABIDE; n = 33, KAU).

Algorithm	Feature set / Number of features	Model Performance	Prediction Performance			KAU		
		Mean Accuracy	ABIDE I + ABIDE II	Accuracy	Sensitivity	Specificity	Accuracy	Sensitivity
		Experiment 1 : Models after Random search						
DT	F1: cortical region's volumes/ 66	62.55	60.38	59.38	58.86	63.64	63.64	57.14
NB		55.88	65.06	64.06	60.16	63.64	63.64	58.08
SVM		59.80	65.06	64.06	63.16	66.67	66.67	61.65
RF		62.35	61.16	60.16	58.78	60.61	60.61	58.27
XGB		62.35	54.91	53.91	52.63	51.52	51.52	51.32
CatBoost		64.91	59.59	58.59	57.68	78.79	78.79	78.76
MLP		61.97	65.84	64.84	63.84	75.76	75.76	72.37
DT	F2: volumes of sub-cortical regions / 68	56.27	67.41	66.41	61.69	63.64	63.64	59.96
NB		57.45	63.5	62.5	59.06	63.64	63.64	59.02
SVM		60.59	59.59	58.59	57.18	60.61	60.61	60.15
RF		61.37	68.19	67.19	64.62	72.73	72.73	69.74
XGB		60.39	58.81	57.81	57.26	72.73	72.73	69.74
CatBoost		61.57	64.28	63.28	61.99	72.73	72.73	71.62
MLP		56.27	62.72	61.72	60.64	54.55	54.55	53.95
DT	F3: surface area of sub-cortical regions / 70	54.90	58.81	57.81	55.01	60.61	60.61	62.97
NB		56.27	65.06	64.06	60.16	69.7	69.7	65.23
SVM		59.61	58.03	57.03	58.08	54.55	54.55	54.89
RF		52.55	63.5	62.5	60.31	60.61	60.61	59.21
XGB		60.78	59.59	58.59	58.68	57.58	57.58	55.64
CatBoost		60.2	61.16	60.16	59.03	66.67	66.67	63.53
MLP		56.45	67.41	66.41	65.69	48.49	48.49	46.80
DT	F4: cortical thickness of sub-cortical regions / 70	56.67	54.13	53.13	51.57	60.61	60.61	59.21
NB		55.69	64.28	63.28	55.92	75.76	75.76	75.19
SVM		60.59	61.94	60.94	57.12	60.61	60.61	55.45
RF		61.76	62.72	61.72	58.91	78.79	78.79	0.75
XGB		63.53	60.38	59.38	58.95	66.67	66.67	63.53
CatBoost		63.92	62.72	61.72	58.91	84.85	84.85	82.14
MLP		56.45	54.91	53.91	52.2	69.7	69.7	65.23
DT	F5: mean curvatures of sub-cortical regions / 68	61.37	66.63	65.63	62.51	66.67	66.67	70.11
NB		59.41	65.06	64.06	59.66	66.67	66.67	64.47
SVM		60.98	64.28	63.28	59.23	69.7	69.7	70.86
RF		64.31	65.06	64.06	62.41	81.82	81.82	81.39
XGB		63.73	65.06	64.06	62.16	54.55	54.55	53.01
CatBoost		64.91	69.75	68.75	66.72	72.73	72.73	73.50
MLP		63.73	63.5	62.5	59.31	72.73	72.73	74.44
DT	F6: all features / 342	59.22	65.84	64.84	61.34	60.61	60.61	58.27
NB		57.65	65.84	64.84	60.34	63.64	63.64	57.14
SVM		65.1	66.63	65.63	63.76	48.49	48.49	45.86
RF		64.12	66.63	65.63	64.26	51.52	51.52	49.44
XGB		63.92	67.41	66.41	64.94	54.55	54.55	50.19
CatBoost		66.27	65.84	64.84	63.09	51.5	48.49	44.92
MLP		62.75	67.41	66.41	64.19	54.55	54.55	53.01

**Supplementary Table S4.** Experiment 2 - Optimized classifier performance with RFECV, Boruta, and GWO feature selection on training data (n = 510, ABIDE) and prediction results on test data (n = 128, ABIDE; n = 33, KAU).

Algorithm	Feature set / Number of features	Model performance	Prediction Performance					
			ABIDE I + ABIDE II			KAU		
		Mean Accuracy	Accuracy	Sensitivity	Specificity	Accuracy	Sensitivity	Specificity
Experiment 2: after random search + RFECV								
DT	F1 / 12	62.94%	60.38%	59.38%	58.86%	63.64%	63.64%	57.14%
NB		41.59%	64.28%	63.28%	58.73%	69.70%	69.70%	65.23%
SVM		60.78%	62.72%	61.72%	58.38%	72.73%	72.73%	50.68%
RF		62.55%	63.50%	62.50%	59.81%	57.58%	57.58%	51.88%
XGB		66.08%	59.59%	58.59%	57.43%	63.64%	63.64%	63.72%
CatBoost		62.55%	62.88%	61.72%	59.38%	66.67%	66.67%	61.65%
M1.P		61.37%	61.94%	60.94%	58.46%	69.70%	69.70%	66.17%
DT	F2 / 17	58.63%	58.81%	57.81%	54.25%	72.78%	72.73%	51.62%
NB		57.84%	61.16%	60.16%	57.03%	43.64%	63.64%	58.06%
SVM		64.31%	47.41%	46.41%	64.94%	60.61%	60.61%	62.97%
RF		63.33%	66.63%	65.63%	64.76%	72.73%	72.73%	68.80%
XGB		63.33%	64.28%	63.28%	61.49%	72.78%	72.73%	70.68%
CatBoost		63.92%	65.84%	64.84%	63.59%	72.73%	72.73%	68.80%
M1.P		65.49%	64.28%	63.28%	61.74%	69.69%	69.70%	47.11%
DT	F3 / 16	60.59%	58.81%	57.81%	59.01%	66.67%	66.67%	63.53%
NB		54.90%	65.06%	64.06%	60.41%	66.66%	66.66%	60.71%
SVM		58.43%	61.94%	60.94%	60.46%	57.58%	57.56%	54.70%
RF		59.02%	57.25%	56.25%	53.90%	72.73%	72.73%	68.80%
XGB		60.98%	55.69%	54.69%	30.53%	57.58%	75.76%	57.52%
CatBoost		58.22%	63.50%	62.50%	60.56%	63.64%	63.64%	60%
M1.P		56.67%	61.94%	60.94%	59.96%	51.52%	51.52%	48.50%
DT	F4 / 19	59.80%	61.94%	60.94%	53.63%	0.81882	81.82%	82.33%
NB		58.43%	65.84%	44.84%	60.67%	57.58%	57.58%	52.82%
SVM		62.35%	57.25%	56.25%	53.71%	69.70%	69.70%	64.29%
RF		62.55%	63.50%	62.50%	59.93%	66.67%	66.67%	61.65%
XGB		64.31%	61.94%	60.94%	58.67%	66.67%	66.67%	62.59%
CatBoost		63.92%	61.16%	60.16%	56.10%	66.67%	66.67%	62.59%
M1.P		60.78%	59.59%	58.59%	56.77%	66.67%	66.67%	63.53%
DT	F5 / 29	62.55%	58.81%	57.81%	58.26%	57.58%	57.58%	53.76%
NB		58.24%	67.41%	46.41%	61.94%	78.79%	78.79%	78.76%
SVM		61.76%	61.16%	60.16%	56.78%	60.61%	60.60%	58.27%
RF		62.55%	63.50%	62.50%	62.31%	66.67%	66.67%	65.41%
XGB		63.92%	69.75%	68.75%	66.72%	63.64%	63.64%	62.78%
CatBoost		65.69%	65.84%	44.84%	62.84%	69.70%	69.70%	68.05%
M1.P		61.18%	62.72%	61.72%	58.38%	66.67%	66.67%	63.53%
DT	F6 / 14	67.24%	61.16%	60.16%	59.03%	45.45%	45.45%	41.35%
NB		57.06%	61.28%	43.28%	58.23%	66.67%	66.67%	71.41%
SVM		61.71%	60.38%	59.38%	56.36%	75.76%	75.70%	71.43%
RF		66.67%	57.25%	56.25%	54.65%	57.58%	57.57%	32.82%
XGB		66.67%	64.28%	43.28%	62.49%	54.55%	54.50%	41.35%
CatBoost		66.86%	59.59%	58.59%	57.18%	57.58%	57.58%	52.82%
M1.P		64.51%	57.25%	56.25%	55.41%	57.58%	57.58%	50.00%

*Continued on the next page*

Algorithm	Feature set / Number of features	Model performance  Mean Accuracy	Prediction Performance					
			ABIDE I + ABIDE II			KAU		
			Accuracy	Sensitivity	Specificity	Accuracy	Sensitivity	Specificity
Experiment 2: after random search and Boruta								
DT	F1 / 6	62.94%	60.38%	59.37%	58.58%	63.64%	63.64%	57.14%
NB		59.41%	61.94%	60.94%	55.74%	66.67%	66.67%	61.65%
SVM		62.16%	61.94%	60.94%	56.21%	66.67%	66.67%	63.54%
RF		62.55%	61.16%	60.16%	57.33%	0.696975	69.70%	70.86%
XGB		64.90%	54.91%	53.06%	51.88%	60.60%	60.61%	61.01%
CatBoost		64.71%	66.79%	60.94%	60.21%	66.67%	66.67%	60.71%
M1.P		62.72%	66.39%	60.16%	56.31%	72.73%	72.73%	68.80%
DT	F2 / 4	57.62%	56.47%	55.47%	52.98%	63.64%	63.62%	62.78%
NB		61.57%	61.94%	60.94%	59.46%	63.64%	63.64%	59.96%
SVM		62.35%	65.83%	64.84%	63.84%	66.67%	66.67%	67.29%
RF		61.37%	62.72%	61.72%	60.64%	60.61%	60.61%	63.10%
XGB		58.63%	61.94%	60.94%	60.21%	60.61%	60.61%	60.15%
CatBoost		60.96%	64.28%	63.28%	61.99%	69.70%	69.70%	68.05%
M1.P		60.98%	61.16%	60.16%	59.03%	69.70%	69.70%	65.23%
DT	F3 / 3	60.00%	58.81%	57.81%	58.51%	60.61%	60.61%	55.45%
NB		59.02%	65.07%	64.06%	61.41%	69.70%	69.70%	68.05%
SVM		60.35%	64.28%	63.28%	61.44%	72.73%	72.73%	70.68%
RF		60.20%	62.72%	61.72%	60.64%	57.58%	57.58%	53.76%
XGB		62.15%	56.47%	55.17%	54.98%	48.48%	48.48%	48.61%
CatBoost		61.37%	61.16%	60.16%	59.11%	57.58%	57.58%	51.88%
M1.P		61.18%	59.59%	54.16%	57.93%	69.70%	69.70%	68.05%
DT	F4 / 4	59.02%	54.13%	53.13%	50.79	60.61%	60.61%	56.39%
NB		59.22%	65.81%	64.84%	60.28%	66.67%	66.67%	61.65%
SVM		62.5%	65.81%	64.84%	60.28%	66.67%	66.67%	61.65%
RF		62.91%	56.46%	56.17%	55.01%	63.62%	63.64%	58.08%
XGB		63.53%	58.81%	57.81%	57.30%	57.58%	57.58%	54.70%
CatBoost		63.73%	58.81%	57.81%	56.92%	66.67%	66.67%	61.65%
M1.P		61.76%	63.28%	63.28%	61.73%	66.67%	66.67%	60.71%
DT	F5 / 4	63.33%	61.16%	60.16%	58.78%	54.55%	54.55%	53.95%
NB		61.56%	62.72%	61.72%	56.32%	66.67%	66.67%	67.29%
SVM		65.69%	64.28%	63.28%	60.99%	75.76%	75.76%	74.25%
RF		65.10%	61.94%	60.94%	59.96%	57.58%	57.58%	56.58%
XGB		64.12%	67.41%	66.41%	64.93%	69.70%	69.70%	69.92%
CatBoost		67.45%	62.72%	61.72%	60.14%	72.73%	72.73%	72.56%
M1.P		63.73%	64.28%	63.28%	60.99%	72.73%	72.73%	73.50%
DT	F6 / 8	64.34%	60.75%	59.38%	56.11%	57.58%	57.58%	58.41%
NB		70.13%	65.84%	64.84%	60.09%	66.06%	60.61%	55.35%
SVM		70.08%	63.75%	59.38%	56.86%	54.55%	54.55%	52.07%
RF		70.06%	58.03%	57.03%	55.08%	51.52%	51.52%	52.26%
XGB		69.56%	59.59%	58.59%	57.19%	48.48%	48.48%	46.80%
CatBoost		66.47%	61.93%	60.94%	58.71%	51.52%	51.52%	48.50%
M1.P		64.90%	63.5%	62.50%	60.56%	54.55%	54.55%	50.19%

Continued on the next page

Algorithm	Feature set / Number of features	Model performance  Mean Accuracy	Prediction Performance					
			ABIDE I + ABIDE II			KAU		
	Accuracy	Sensitivity	Specificity	Accuracy	Sensitivity	Specificity		
Experiment 2: after GWO-based hyperparameter tuning and feature selection algorithms								
DT	F1 /16	59.22%	56.46%	55.7%	55.73%	69.69%	69.70%	64.29%
NB		59.80%	64.28%	63.28%	58.49%	57.58%	57.58%	50.93%
SVM		67.6%	61.94%	60.94%	59.46%	54.55%	54.52%	49.25%
RF		63.53%	61.6%	60.16%	59.01%	66.67%	66.67%	60.71%
XGB		67.25%	55.69%	54.69%	51.80%	60.61%	60.61%	58.27%
CatBoost		61.18%	57.25%	56.25%	55.41%	60.61%	60.61%	55.45%
M1.P		67.06%	59.59%	58.59%	57.18%	60.61%	60.61%	56.93%
DT	F2 / 19	57.65%	63.50%	62.50%	60.31%	66.67%	66.67%	65.41%
NB		58.24%	62.72%	61.72%	59.38%	63.64%	63.64%	59.96%
SVM		65.00%	60.38%	59.38%	57.46%	57.58%	57.58%	56.58%
RF		62.16%	60.38%	59.38%	58.86%	72.77%	72.73%	70.68%
XGB		63.14%	52.56%	51.56%	51.10%	60.61%	60.61%	59.21%
CatBoost		64.73%	58.89%	57.81%	57.51%	66.67%	66.67%	64.47%
M1.P		62.35%	56.47%	55.47%	5.62%	51.52%	51.52%	54.41%
DT	F3 / 14	60.39%	51.00%	50.00%	52.51%	57.58%	57.58%	51.88%
NB		57.06%	64.28%	63.28%	59.48%	69.70%	69.70%	64.29%
SVM		66.86%	55.69%	54.68%	53.30%	54.55%	54.55%	51.13%
RF		61.37%	53.34%	52.14%	50.53%	66.67%	66.67%	65.41%
XGB		63.33%	54.13%	53.13%	51.70%	63.64%	63.64%	61.84%
CatBoost		64.51%	50.22%	49.22%	47.07%	48.48%	48.48%	47.74%
M1.P		60.20%	59.59%	58.59%	58.68%	42.42%	42.42%	41.54%
DT	F4 / 19	61.37%	59.59%	58.59%	61.37%	59.59%	45.45%	44.17%
NB		57.06%	64.28%	63.28%	55.92%	69.70%	69.70%	68.05%
SVM		67.8%	59.59%	58.59%	55.99%	66.67%	66.67%	62.59%
RF		65.49%	63.50%	62.50%	59.93%	6.67%	66.67%	61.65%
XGB		67.06%	56.46%	55.47%	54.26%	63.64%	63.64%	60.90%
CatBoost		68.63%	61.16%	60.16%	58.03%	66.66%	66.67%	62.94%
M1.P		65.49%	60.38%	59.38%	57.40%	60.61%	60.61%	54.51%
DT	F5 / 11	62.16%	65.06%	64.07%	63.16%	51.52%	51.52%	49.44%
NB		60.20%	62.72%	61.72%	56.88%	66.67%	66.66%	66.36%
SVM		70.20%	63.50%	62.50%	60.31%	69.70%	69.70%	67.11%
RF		62.75%	61.16%	60.16%	59.03%	66.67%	66.67%	65.41%
XGB		63.33%	65.84%	64.84%	63.09%	63.64%	63.64%	64.66%
CatBoost		69.80%	62.72%	61.72%	60.14%	63.64%	63.64%	59.03%
M1.P		66.86%	62.72%	61.72%	59.88%	60.61%	60.60%	57.33%
DT	F6 / 62	61.57%	58.03%	57.03%	52.57%	45.45%	45.45%	46.05%
NB		58.82%	68.19%	67.19%	62.86%	60.61%	60.61%	54.54%
SVM		70%	65.84%	64.84%	63.33%	57.58%	57.58%	54.70%
RF		62.94%	65.84%	64.84%	62.84%	42.42%	42.42%	39.66%
XGB		68.04%	57.25%	56.25%	55.16%	51.52%	51.52%	51.32%
CatBoost		69.02%	62.71%	61.72%	60.14%	45.45%	45.45%	44.18%
M1.P		63.33%	69.75%	68.75%	65.72%	42.42%	68.75%	43.42%



**Supplementary Table S5.** Experiment 3: Optimized classifier performance with GWO-based hyperparameter tuning, feature selection algorithms, age, and gender on training data (n = 510, ABIDE) and prediction results on test data (n = 128, ABIDE; n = 33, KAU).

Experiment 3 : Models with GWO-based hyperparameter tuning and feature selection algorithms + age and gender								
Model	Feature set / Number of features	Model Performance on Training Dataset Mean Accuracy	Prediction Performance on Testing Dataset					
			ABIDE I + ABIDE II			KAU		
			Accuracy	Sensitivity	Specificity	Accuracy	Sensitivity	Specificity
SVM	P5: mean curvatures of sub-cortical regions / 13	70.19	63.5	62.5	60.31	69.67	69.67	67.12
XGB		67.06	58.03	57.03	55.33	78.79	78.79	75
CatBoost		69.80	62.72	61.72	60.14	63.64	69.7	66.17
SVM	P6: all features / 62	71	64.28	63.28	61.74	57.58	57.58	53.76
XGB		68.63	59.59	58.59	57.18	45.45	45.45	43.23
CatBoost		69.02	62.72	61.72	60.14	52.51	51.52	50.38

	F1: Segmentation Volumes	F2: Parcellation Volumes	F3: Parcellation Surface Area	F4: Parcellation Thickness	F5: Parcellation Mean Curvature	F6: All Features
RFE	1. Left-Caudate 2. 3rd-Ventricle 3. Brain-Stem 4. Left-Amygdala 5. Right-Putamen 6. Right-VentralDC 7. Right-vessel WM-hypointensities 8. Optic-Chiasm 9. CC_Central 10. BrainSegVols-to-eTV 12. rhSurfaceHoles	1. lh_lateraloccipital_volume 2. rh_lingual_volume 3. lh_precuneus_volume 4. lh_rostralanteriorcingulate_volume 5. rh_superiortemporal_volume 6. rh_caudalanteriorcingulate_volume 7. rh_inferiorparietal_volume 8. rh_middletemporal_volume 9. rh_parsopercularis_volume 10. rh_parsorbitalis_volume 11. rh_postcentral_volume 12. rh_postcentral_volume 13. rh_posteriorcingulate_volume 14. rh_supramarginal_volume 15. rh_frontalpole_volume 16. rh_temporalpole_volume	1. rh_entorhinal_area 2. rh_inferiorparietal_area 3. rh_lateraloccipital_area 4. rh_pericalcarine_area 5. rh_posteriorcingulate_area 6. rh_precuneus_area 7. rh_rostralanteriorcingulate_area 8. rh_temporalpole_area 9. lh_caudalanteriorcingulate_area 10. lh_lateralorbitofrontal_area 11. lh_parahippocampal_area 12. lh_parsorbitalis_area 13. lh_superiortemporal_area 14. lh_supramarginal_area 15. lh_frontalpole_area 16. lh_temporalpole_area	1. rh_caudalanteriorcingulate_thickness 2. rh_entorhinal_thickness 3. rh_fusiform_thickness 4. rh_isthmuscingulate_thickness 5. rh_lingual_thickness 6. rh_medialorbitofrontal_thickness 7. rh_parsorbitalis_thickness 8. rh_pericalcarine_thickness 9. rh_posteriorcingulate_thickness 10. rh_supramarginal_thickness 11. rh_temporalpole_thickness 12. lh_entorhinal_thickness 13. lh_lateralorbitofrontal_thickness 14. lh_parahippocampal_thickness 15. lh_posteriorcingulate_thickness 16. lh_precuneus_thickness 17. lh_rostralmiddlefrontal_thickness 18. lh_superiortemporal_thickness 19. lh_frontalpole_thickness	1. lh_cuneus_meancurv 2. lh_fusiform_meancurv 3. lh_inferiortemporal_meancurv 4. lh_lateraloccipital_meancurv 5. lh_lateralorbitofrontal_meancurv 6. lh_middletemporal_meancurv 7. lh_parahippocampal_meancurv 8. lh_paracentral_meancurv 9. lh_parsorbitalis_meancurv 10. lh_pericalcarine_meancurv 11. lh_postcentral_meancurv 12. lh_precuneus_meancurv 13. lh_parsorbitalis_meancurv 14. lh_transversetemporal_meancurv 15. lh_insula_meancurv 16. rh_bankssts_meancurv 17. rh_caudalanteriorcingulate_meancurv 18. rh_cuneus_meancurv 19. rh_inferiorparietal_meancurv 20. rh_lateralorbitofrontal_meancurv 21. rh_middletemporal_meancurv 22. rh_parahippocampal_meancurv 23. rh_paracentral_meancurv 24. rh_parietangularis_meancurv 25. rh_rostralanteriorcingulate_meancurv 26. rh_superiorfrontal_meancurv 27. rh_superiorparietal_meancurv 28. rh_frontalpole_meancurv 29. rh_transversetemporal_meancurv	1. rh_precuneus_area 2. rh_transversetemporal_area 3. lh_entorhinal_area 4. lh_parietangularis_area 5. rh_parsopercularis_meancurv 6. rh_pericalcarine_meancurv 7. rh_bankssts_thickness 8. rh_isthmuscingulate_thickness 9. lh_superiortemporal_thickness 10. rh_parahippocampal_volume 11. Left-Putamen 12. Right-Pallidum 13. CC_Posterior 14. lhSurfaceHoles
Borda	1. Left-Putamen 2. 3rd-Ventricle 3. Right-Putamen 4. lhSurfaceHoles 5. rhSurfaceHoles 6. SurfaceHoles	1. lh_rostralanteriorcingulate_volume 2. rh_postcentral_volume 3. rh_rostralanteriorcingulate_volume 4. rh_frontalpole_volume	1. rh_bankssts_area 2. rh_paracentral_area 3. lh_lateralorbitofrontal_area	1. rh_medialorbitofrontal_thickness 2. lh_caudalanteriorcingulate_thickness 3. lh_parahippocampal_thickness 4. lh_parsorbitalis_thickness	1. lh_fusiform_meancurv 2. lh_lateraloccipital_meancurv 3. lh_lingual_meancurv 4. lh_superiortemporal_meancurv	1. lh_lateraloccipital_meancurv 2. lh_lingual_meancurv 3. rh_isthmuscingulate_thickness 4. rh_medialorbitofrontal_thickness 5. lh_parsorbitalis_thickness 6. Right-Putamen 7. lhSurfaceHoles 8. SurfaceHoles
GWO-based algorithm	1. Left-Cerebellum-White-Matter 2. Left-Caudate 3. CSF 4. Left-choroid-plexus 5. Right-Inf-Lat-Vent 6. Right-Pallidum 7. Right-WM-hypointensities 8. Left-non-WM-hypointensities 9. CC_Posterior 10. CC_Central 11. CC_Mid_Anterior 12. CC_Anterior 13. rhCortexVol 14. BrainSegVols-to-eTV 15. rhSurfaceHoles 16. rhSurfaceHoles	1. lh_fusiform_volume 2. lh_inferiorparietal_volume 3. lh_lateralorbitofrontal_volume 4. lh_parahippocampal_volume 5. lh_postcentral_volume 6. lh_superiortemporal_volume 7. lh_inferiorparietal_volume 8. lh_insula_volume 9. rh_caudalanteriorcingulate_volume 10. rh_cuneus_volume 11. rh_entorhinal_volume 12. rh_inferiorparietal_volume 13. rh_paracentral_volume 14. rh_parietangularis_volume 15. rh_pericalcarine_volume 16. rh_postcentral_volume 17. rh_precentral_volume 18. rh_superiorparietal_volume 19. rh_insula_volume	1. rh_entorhinal_area 2. rh_lateralorbitofrontal_area 3. rh_middletemporal_area 4. rh_pericalcarine_area 5. rh_superiorfrontal_area 6. rh_WhiteSurfArea 7. rh_entorhinal_area 8. rh_lateralorbitofrontal_area 9. lh_parsorbitalis_area 10. lh_posteriorcingulate_area 11. lh_superiorparietal_area 12. lh_superiortemporal_area 13. lh_supramarginal_area 14. lh_temporalpole_area	1. rh_bankssts_thickness 2. rh_caudalmiddlefrontal_thickness 3. rh_entorhinal_thickness 4. rh_isthmuscingulate_thickness 5. rh_medialorbitofrontal_thickness 6. rh_middletemporal_thickness 7. rh_precentral_thickness 8. rh_rostralanteriorcingulate_thickness 9. rh_superiorfrontal_thickness 10. rh_superiortemporal_thickness 11. rh_temporalpole_thickness 12. rh_caudalanteriorcingulate_thickness 13. rh_inferiorparietal_thickness 14. lh_lingual_thickness 15. lh_middletemporal_thickness 16. lh_parahippocampal_thickness 17. lh_parsorbitalis_thickness 18. rh_rostralmiddlefrontal_thickness 19. lh_MeanThickness_thickness	1. lh_inferiorparietal_meancurv 2. lh_middletemporal_meancurv 3. lh_pericalcarine_meancurv 4. lh_superiorfrontal_meancurv 5. lh_frontalpole_meancurv 6. rh_lateraloccipital_meancurv 7. rh_lingual_meancurv 8. rh_middletemporal_meancurv 9. rh_pericalcarine_meancurv 10. rh_posteriorcingulate_meancurv 11. rh_superiorfrontal_meancurv	1. rh_cuneus_area 2. rh_isthmuscingulate_area 3. rh_middletemporal_area 4. rh_paracentral_area 5. rh_parietangularis_area 6. rh_posteriorcingulate_area 7. rh_precuneus_area 8. rh_rostralmiddlefrontal_area 9. lh_fusiform_area 10. lh_medialorbitofrontal_area 11. lh_middletemporal_area 12. lh_parsopercularis_area 13. lh_supramarginal_area 14. lh_transversetemporal_area 15. lh_WhiteSurfArea_area 16. lh_fusiform_meancurv 17. lh_inferiortemporal_meancurv 18. lh_inferiorfrontal_meancurv 19. lh_supramarginal_meancurv 20. lh_frontalpole_meancurv 21. lh_superiorfrontal_meancurv 22. lh_insula_meancurv 23. rh_caudalmiddlefrontal_meancurv 24. rh_lateralorbitofrontal_meancurv 25. rh_parahippocampal_meancurv 26. rh_parietangularis_meancurv 27. rh_pericalcarine_meancurv 28. rh_precuneus_meancurv 29. rh_isthmuscingulate_thickness 30. rh_lateralorbitofrontal_thickness 31. rh_parietangularis_thickness 32. rh_precentral_thickness 33. rh_rostralanteriorcingulate_thickness 34. rh_frontalpole_thickness 35. lh_lateraloccipital_thickness 36. lh_lingual_thickness 37. lh_superiorparietal_thickness 38. lh_supramarginal_thickness 39. lh_frontalpole_thickness 40. lh_bankssts_volume 41. lh_parsopercularis_volume 42. lh_postcentral_volume 43. lh_precentral_volume 44. lh_rostralmiddlefrontal_volume 45. lh_temporalpole_volume 46. rh_entorhinal_volume 47. rh_fusiform_volume 48. rh_lateralorbitofrontal_volume 49. rh_parsorbitalis_volume 50. rh_parietangularis_volume 51. rh_rostralmiddlefrontal_volume 52. Left-Cerebellum-White-Matter 53. 4th-Ventricle 54. CSF 55. Right-Thalamus-Proprius 56. Right-Amygdala 57. Right-Accumbens-area 58. non-WM-hypointensities 59. CC_Posterior 60. CC_Anterior 61. rhCorticalWhiteMatterVol 62. rhSurfaceHoles

**Supplementary Figure S2.** Selected important features from various morphological sets using different techniques (RFE: recursive feature elimination; GWO: grey wolf optimization). 'Rh' and 'Lh' denote the right and left hemispheres of the brain, respectively.

Each column in the figure above shows the selection of features from the six feature groups by FS techniques

in each row. The colors in each column highlight the feature that is frequently chosen among the various techniques. RFE and Boruta frequently select features highlighted in purple in one column as important. The blue-shaded features were chosen by Boruta and his GWO-based algorithm. The features in pink were chosen using an RFE and GWO-based algorithm, and the features in yellow were chosen using all techniques.

### Statistical differences between ASD and typical development subjects:

To statistically answer the question "Does average the feature differ between ASD and Non-ASD?", we used Independent t-Test in IBM SPSS software [59]. This is an inferential statistical hypothesis test, which draws inferences about the population based on sample data. Two hypotheses are included in this test: 1) Null hypothesis: The means of the two groups are equal. 2) Alternative hypothesis: The means for the two groups are not equal.

If the p-value is less than the significance threshold (here, 0.05), then the null hypothesis is rejected. Thus, the difference between the two averages is statistically significant. Attached are the stats of the two groups (mean, Std. deviation, and Std. error mean) and ABIDEs' subjects independent t-test results for all features, see Table S6-S7.

**Supplementary Table S6.** Brain morphometric statistics for the two ABIDE datasets.

Group Statistics					
	asd	N	Mean	Std. Deviation	Std. Error Mean
rh_bankssts_area	ASD	292	963.39726	220.187033	12.885471
	non-ASD	346	990.64498	181.181376	9.740371
rh_caudalanteriorcingulate_area	ASD	292	748.70548	185.197236	10.837848
	non-ASD	346	778.01790	158.793140	8.536772
rh_caudalmiddlefrontal_area	ASD	292	2201.2842	494.13694	28.91718
	non-ASD	346	2265.3647	419.72291	22.56444
rh_cuneus_area	ASD	292	1502.26027	295.173816	17.273741
	non-ASD	346	1516.46021	267.658826	14.389428
rh_entorhinal_area	ASD	292	353.94521	122.825850	7.187839
	non-ASD	346	363.83072	132.720857	7.135117
rh_fusiform_area	ASD	292	3200.55822	637.976763	37.334766
	non-ASD	346	3327.48903	548.038382	29.462726
rh_inferiorparietal_area	ASD	292	5721.88014	1050.493183	61.475464
	non-ASD	346	5808.74927	912.842919	49.074739
rh_inferiortemporal_area	ASD	292	3164.87671	697.881393	40.840419
	non-ASD	346	3301.02091	594.392057	31.954715
rh_isthmuscingulate_area	ASD	292	998.39041	198.441327	11.612900
	non-ASD	346	996.72036	184.311028	9.908622
rh_lateraloccipital_area	ASD	292	4771.28767	834.171136	48.816173
	non-ASD	346	4814.48056	705.747505	37.941221
rh_lateralorbitofrontal_area	ASD	292	2464.24658	516.926598	30.250841
	non-ASD	346	2615.12203	437.766110	23.534452
rh_lingual_area	ASD	292	2973.42466	616.666628	36.087685
	non-ASD	346	3111.41404	537.184422	28.879213
rh_medialorbitofrontal_area	ASD	292	1769.35959	365.004887	21.360295
	non-ASD	346	1857.25787	297.434789	15.990193

rh_middletemporal_area	ASD	292	3407.35959	635.207965	37.172734
	non-ASD	346	3526.85331	578.759747	31.114317
rh_parahippocampal_area	ASD	292	702.19	136.412	7.983
	non-ASD	346	715.08	171.716	9.232
rh_paracentral_area	ASD	292	1593.39041	296.353575	17.342781
	non-ASD	346	1575.30416	232.670196	12.508427
rh_parsopercularis_area	ASD	292	1421.98288	313.566037	18.350064
	non-ASD	346	1456.61910	266.509851	14.327658
rh_parsorbitalis_area	ASD	292	779.25000	147.038845	8.604798
	non-ASD	346	803.76099	136.583057	7.342751
rh_parstriangularis_area	ASD	292	1512.43151	324.875613	19.011907
	non-ASD	346	1570.45451	305.336170	16.414974
rh_pericalcarine_area	ASD	292	1390.41096	330.655076	19.350125
	non-ASD	346	1477.31573	293.956552	15.803202
rh_postcentral_area	ASD	292	4170.90068	699.456667	40.932605
	non-ASD	346	4256.40254	631.741895	33.962655
rh_posteriorcingulate_area	ASD	292	1256.00000	267.401355	15.648481
	non-ASD	346	1275.18844	226.270963	12.164402
rh_precentral_area	ASD	292	4952.35616	812.938941	47.573653
	non-ASD	346	4979.09033	660.498005	35.508593
rh_precuneus_area	ASD	292	4182.65068	735.202290	43.024460
	non-ASD	346	4192.22026	654.848331	35.204864
rh_rostralanteriorcingulate_area	ASD	292	638.30822	169.919369	9.943779
	non-ASD	346	678.26935	147.250467	7.916234
rh_rostralmiddlefrontal_area	ASD	292	6026.87329	1221.704758	71.494863
	non-ASD	346	6208.13360	1023.764262	55.037908
rh_superiorfrontal_area	ASD	292	7178.22260	1238.910466	72.501751
	non-ASD	346	7333.06998	997.739559	53.638811
rh_superiorparietal_area	ASD	292	5572.70548	922.813345	54.003566
	non-ASD	346	5667.94874	772.149047	41.510990
rh_superiortemporal_area	ASD	292	3640.45548	634.690455	37.142449
	non-ASD	346	3704.57293	564.006300	30.321167
rh_supramarginal_area	ASD	292	3837.13699	692.746713	40.539935
	non-ASD	346	3874.59320	651.447227	35.022020
rh_frontalpole_area	ASD	292	310.02740	55.744255	3.262186
	non-ASD	346	304.33352	47.598462	2.558909
rh_temporalpole_area	ASD	292	421.86644	83.949416	4.912768
	non-ASD	346	432.24070	109.269848	5.874383
rh_transversetemporal_area	ASD	292	349.93836	75.453654	4.415591
	non-ASD	346	352.98036	68.042531	3.657989
rh_insula_area	ASD	292	2080.90753	343.844899	20.122001
	non-ASD	346	2114.89931	369.019470	19.838610
rh_WhiteSurfArea_area	ASD	292	86259.017	13090.9969	766.0926
	non-ASD	345	88501.734	10006.5629	538.7352
lh_bankssts_area	ASD	292	1055.69	219.719	12.858
	non-ASD	346	1089.77	215.143	11.566
lh_caudalanteriorcingulate_area	ASD	292	639.24	160.935	9.418
	non-ASD	346	663.15	141.426	7.603
lh_caudalmiddlefrontal_area	ASD	292	2376.77	492.614	28.828
	non-ASD	346	2454.31	392.231	21.086

lh_cuneus_area	ASD	292	1417.83	283.325	16.580
	non-ASD	346	1459.45	249.150	13.394
lh_entorhinal_area	ASD	292	385.13	109.406	6.403
	non-ASD	346	417.17	142.204	7.645
lh_fusiform_area	ASD	292	3288.76	611.157	35.765
	non-ASD	346	3423.48	556.017	29.892
lh_inferiorparietal_area	ASD	292	4770.03	861.639	50.424
	non-ASD	346	4889.98	774.721	41.649
lh_inferiortemporal_area	ASD	292	3279.52	710.250	41.564
	non-ASD	346	3428.55	617.237	33.183
lh_isthmuscingulate_area	ASD	292	1115.76	239.915	14.040
	non-ASD	346	1102.95	205.312	11.038
lh_lateraloccipital_area	ASD	292	4911.24	765.615	44.804
	non-ASD	346	4954.39	670.164	36.028
lh_lateralorbitofrontal_area	ASD	292	2504.25	531.767	31.119
	non-ASD	346	2688.20	427.527	22.984
lh_lingual_area	ASD	292	2937.45	642.003	37.570
	non-ASD	346	3107.38	566.447	30.452
lh_medialorbitofrontal_area	ASD	292	1714.08	305.303	17.867
	non-ASD	346	1811.06	269.229	14.474
lh_middletemporal_area	ASD	292	3022.85	579.157	33.893
	non-ASD	346	3179.46	529.785	28.481
lh_parahippocampal_area	ASD	292	726.91	177.726	10.401
	non-ASD	346	750.78	166.561	8.954
lh_paracentral_area	ASD	292	1419.58	237.606	13.905
	non-ASD	346	1396.04	176.925	9.512
lh_parsopercularis_area	ASD	292	1699.05	332.715	19.471
	non-ASD	346	1754.55	313.283	16.842
lh_parsorbitalis_area	ASD	292	631.90	124.714	7.298
	non-ASD	346	649.67	101.866	5.476
lh_parstriangularis_area	ASD	292	1325.19	260.120	15.222
	non-ASD	346	1362.81	228.642	12.292
lh_pericalcarine_area	ASD	292	1273.70	288.992	16.912
	non-ASD	346	1360.00	266.864	14.347
lh_postcentral_area	ASD	292	4372.71	702.600	41.117
	non-ASD	346	4397.41	588.489	31.637
lh_posteriorcingulate_area	ASD	292	1263.37	223.498	13.079
	non-ASD	346	1263.33	195.816	10.527
lh_precentral_area	ASD	292	4878.15	721.362	42.215
	non-ASD	346	4931.29	597.590	32.127
lh_precuneus_area	ASD	292	3926.82	661.470	38.710
	non-ASD	346	3986.48	549.626	29.548
lh_rostralanteriorcingulate_area	ASD	292	768.55	205.920	12.051
	non-ASD	346	819.85	167.818	9.022
lh_rostralmiddlefrontal_area	ASD	292	5828.44	1112.457	65.102
	non-ASD	346	6035.27	917.523	49.326
lh_superiorfrontal_area	ASD	292	7333.87	1195.981	69.989
	non-ASD	346	7569.56	979.610	52.664
lh_superiorparietal_area	ASD	292	5582.90	921.625	53.934
	non-ASD	346	5684.21	707.529	38.037

lh_superiortemporal_area	ASD	292	3852.12	662.322	38.759
	non-ASD	346	3899.35	572.609	30.784
lh_supramarginal_area	ASD	292	4104.42	705.779	41.303
	non-ASD	346	4151.16	688.924	37.037
lh_frontalpole_area	ASD	292	226.49	45.337	2.653
	non-ASD	346	225.34	41.319	2.221
lh_temporalpole_area	ASD	292	477.53	87.233	5.105
	non-ASD	346	488.98	81.122	4.361
lh_transversetemporal_area	ASD	292	478.30	99.272	5.809
	non-ASD	346	468.47	79.282	4.262
lh_insula_area	ASD	292	2117.91	332.472	19.456
	non-ASD	346	2135.38	307.382	16.525
lh_WhiteSurfArea_area	ASD	292	85706.570	12474.8102	730.0331
	non-ASD	346	87999.177	10048.6016	540.2162
lh_bankssts_meancurv	ASD	292	.12828	.022119	.001294
	non-ASD	346	.12247	.015602	.000839
lh_caudalanteriorcingulate_meancurv	ASD	292	.15160	.021401	.001252
	non-ASD	346	.15186	.018671	.001004
lh_caudalmiddlefrontal_meancurv	ASD	292	.15080	.022774	.001333
	non-ASD	346	.14272	.017864	.000960
lh_cuneus_meancurv	ASD	292	.18958	.029177	.001707
	non-ASD	346	.18068	.017001	.000914
lh_entorhinal_meancurv	ASD	292	.18651	.051244	.002999
	non-ASD	346	.17658	.038700	.002081
lh_fusiform_meancurv	ASD	292	.17054	.024791	.001451
	non-ASD	346	.15963	.016583	.000891
lh_inferiorparietal_meancurv	ASD	292	.15958	.026157	.001531
	non-ASD	346	.14983	.014992	.000806
lh_inferiortemporal_meancurv	ASD	292	.17013	.022752	.001331
	non-ASD	346	.16003	.016530	.000889
lh_isthmuscingulate_meancurv	ASD	292	.16348	.017590	.001029
	non-ASD	346	.15920	.014072	.000757
lh_lateraloccipital_meancurv	ASD	292	.17752	.025021	.001464
	non-ASD	346	.16545	.016940	.000911
lh_lateralorbitofrontal_meancurv	ASD	292	.17426	.022718	.001329
	non-ASD	346	.16830	.014378	.000773
lh_lingual_meancurv	ASD	292	.18631	.025331	.001482
	non-ASD	346	.17645	.018750	.001008
lh_medialorbitofrontal_meancurv	ASD	292	.17190	.024437	.001430
	non-ASD	346	.16557	.016145	.000868
lh_middletemporal_meancurv	ASD	292	.16844	.024198	.001416
	non-ASD	346	.15926	.017729	.000953
lh_parahippocampal_meancurv	ASD	292	.15009	.032860	.001923
	non-ASD	346	.14192	.027908	.001500
lh_paracentral_meancurv	ASD	292	.14705	.026156	.001531
	non-ASD	346	.13790	.019408	.001043
lh_parsopercularis_meancurv	ASD	292	.15490	.023103	.001352
	non-ASD	346	.14626	.015509	.000834
lh_parsorbitalis_meancurv	ASD	292	.19267	.029242	.001711
	non-ASD	346	.18334	.024206	.001301

lh_parstriangularis_meancurv	ASD	292	.15898	.026887	.001573
	non-ASD	346	.15128	.017381	.000934
lh_pericalcarine_meancurv	ASD	292	.17394	.034392	.002013
	non-ASD	346	.16318	.019899	.001070
lh_postcentral_meancurv	ASD	292	.16048	.028358	.001660
	non-ASD	346	.14936	.021049	.001132
lh_posteriorcingulate_meancurv	ASD	292	.16414	.016527	.000967
	non-ASD	346	.16158	.015537	.000835
lh_precentral_meancurv	ASD	292	.14781	.024991	.001462
	non-ASD	346	.13824	.019235	.001034
lh_precuneus_meancurv	ASD	292	.15634	.018234	.001067
	non-ASD	346	.15105	.012597	.000677
lh_rostralanteriorcingulate_meancurv	ASD	292	.16764	.023252	.001361
	non-ASD	346	.16716	.017248	.000927
lh_rostralmiddlefrontal_meancurv	ASD	292	.17509	.020181	.001181
	non-ASD	346	.16790	.014732	.000792
lh_superiorfrontal_meancurv	ASD	292	.16378	.020629	.001207
	non-ASD	346	.15616	.015356	.000826
lh_superiorparietal_meancurv	ASD	292	.15912	.026517	.001552
	non-ASD	346	.15025	.016979	.000913
lh_superiortemporal_meancurv	ASD	292	.14992	.027834	.001629
	non-ASD	346	.13928	.020019	.001076
lh_supramarginal_meancurv	ASD	292	.16163	.021729	.001272
	non-ASD	346	.15418	.014670	.000789
lh_frontalpole_meancurv	ASD	292	.23634	.035017	.002049
	non-ASD	346	.22789	.032359	.001740
lh_temporalpole_meancurv	ASD	292	.21352	.050234	.002940
	non-ASD	346	.20136	.039003	.002097
lh_transversetemporal_meancurv	ASD	292	.16469	.025878	.001514
	non-ASD	346	.15689	.021367	.001149
lh_insula_meancurv	ASD	292	.13133	.021736	.001272
	non-ASD	346	.12733	.016016	.000861
rh_bankssts_meancurv	ASD	292	.12931	.024824	.001453
	non-ASD	346	.12505	.014624	.000786
rh_caudalanteriorcingulate_meancurv	ASD	292	.15583	.020585	.001205
	non-ASD	346	.15526	.015121	.000813
rh_caudalmiddlefrontal_meancurv	ASD	292	.15300	.026467	.001549
	non-ASD	346	.14353	.018144	.000975
rh_cuneus_meancurv	ASD	292	.19250	.035997	.002107
	non-ASD	346	.18364	.020449	.001099
rh_entorhinal_meancurv	ASD	292	.19536	.053333	.003121
	non-ASD	346	.18236	.038380	.002063
rh_fusiform_meancurv	ASD	292	.16631	.024400	.001428
	non-ASD	346	.15840	.016458	.000885
rh_inferiorparietal_meancurv	ASD	292	.16122	.024515	.001435
	non-ASD	346	.15317	.014401	.000774
rh_inferiortemporal_meancurv	ASD	292	.16980	.022254	.001302
	non-ASD	346	.16217	.016818	.000904
rh_isthmuscingulate_meancurv	ASD	292	.16200	.023516	.001376
	non-ASD	346	.15837	.013773	.000740



rh_lateraloccipital_meancurv	ASD	292	.17670	.022077	.001292
	non-ASD	346	.16707	.015566	.000837
rh_lateralorbitofrontal_meancurv	ASD	292	.17433	.022319	.001306
	non-ASD	346	.16827	.014968	.000805
rh_lingual_meancurv	ASD	292	.18721	.022928	.001342
	non-ASD	346	.17902	.018244	.000981
rh_medialorbitofrontal_meancurv	ASD	292	.17299	.019148	.001121
	non-ASD	346	.16873	.015423	.000829
rh_middletemporal_meancurv	ASD	292	.16534	.022878	.001339
	non-ASD	346	.15812	.017509	.000941
rh_parahippocampal_meancurv	ASD	292	.14735	.031438	.001840
	non-ASD	346	.14097	.026896	.001446
rh_paracentral_meancurv	ASD	292	.14573	.026221	.001534
	non-ASD	346	.13850	.017674	.000950
rh_parsopercularis_meancurv	ASD	292	.15524	.020407	.001194
	non-ASD	346	.14830	.015717	.000845
rh_parsorbitalis_meancurv	ASD	292	.19013	.028702	.001680
	non-ASD	346	.17904	.022541	.001212
rh_parstriangularis_meancurv	ASD	292	.16413	.027925	.001634
	non-ASD	346	.15345	.016531	.000889
rh_pericalcarine_meancurv	ASD	292	.17805	.036747	.002150
	non-ASD	346	.16453	.022088	.001187
rh_postcentral_meancurv	ASD	292	.15735	.029312	.001715
	non-ASD	346	.14742	.022849	.001228
rh_posteriorcingulate_meancurv	ASD	292	.16363	.019066	.001116
	non-ASD	346	.15986	.011957	.000643
rh_precentral_meancurv	ASD	292	.14798	.025386	.001486
	non-ASD	346	.13895	.019350	.001040
rh_precuneus_meancurv	ASD	292	.15574	.019825	.001160
	non-ASD	346	.15067	.012345	.000664
rh_rostralanteriorcingulate_meancurv	ASD	292	.16369	.029932	.001752
	non-ASD	346	.16405	.019134	.001029
rh_rostralmiddlefrontal_meancurv	ASD	292	.17503	.020387	.001193
	non-ASD	346	.16805	.015260	.000820
rh_superiorfrontal_meancurv	ASD	292	.16420	.020140	.001179
	non-ASD	346	.15631	.014931	.000803
rh_superiorparietal_meancurv	ASD	292	.16057	.026203	.001533
	non-ASD	346	.15194	.018521	.000996
rh_superiortemporal_meancurv	ASD	292	.14905	.028987	.001696
	non-ASD	346	.13949	.020851	.001121
rh_supramarginal_meancurv	ASD	292	.15915	.025324	.001482
	non-ASD	346	.15240	.015918	.000856
rh_frontalpole_meancurv	ASD	292	.23687	.034068	.001994
	non-ASD	346	.22582	.027817	.001495
rh_temporalpole_meancurv	ASD	292	.21901	.045470	.002661
	non-ASD	346	.21032	.037805	.002032
rh_transversetemporal_meancurv	ASD	292	.16987	.028993	.001697
	non-ASD	346	.16127	.022886	.001230
rh_insula_meancurv	ASD	292	.14555	.020450	.001197
	non-ASD	346	.14222	.015939	.000857



rh_bankssts_thickness	ASD	292	2.74675	.340949	.019953
	non-ASD	346	2.79131	.243884	.013111
rh_caudalanteriorcingulate_thickness	ASD	292	2.75257	.381911	.022350
	non-ASD	346	2.84985	.332313	.017865
rh_caudalmiddlefrontal_thickness	ASD	292	2.70198	.274832	.016083
	non-ASD	346	2.72380	.225636	.012130
rh_cuneus_thickness	ASD	292	2.20035	.216800	.012687
	non-ASD	346	2.17569	.206941	.011125
rh_entorhinal_thickness	ASD	292	3.19384	.615180	.036001
	non-ASD	346	3.29209	.479775	.025793
rh_fusiform_thickness	ASD	292	2.80632	.313916	.018371
	non-ASD	346	2.88321	.247900	.013327
rh_inferiorparietal_thickness	ASD	292	2.72348	.235293	.013769
	non-ASD	346	2.74535	.191604	.010301
rh_inferiortemporal_thickness	ASD	292	2.82902	.345276	.020206
	non-ASD	346	2.89010	.281348	.015125
rh_isthmuscingulate_thickness	ASD	292	2.70758	.292801	.017135
	non-ASD	346	2.77035	.240983	.012955
rh_lateraloccipital_thickness	ASD	292	2.34960	.180533	.010565
	non-ASD	346	2.33876	.160057	.008605
rh_lateralorbitofrontal_thickness	ASD	292	2.96599	.318724	.018652
	non-ASD	346	2.98245	.245651	.013206
rh_lingual_thickness	ASD	292	2.35932	.199451	.011672
	non-ASD	346	2.34940	.182587	.009816
rh_medialorbitofrontal_thickness	ASD	292	2.78223	.276421	.016176
	non-ASD	346	2.75229	.210699	.011327
rh_middletemporal_thickness	ASD	292	2.99257	.367324	.021496
	non-ASD	346	3.07316	.326588	.017558
rh_parahippocampal_thickness	ASD	292	2.76467	.435583	.025491
	non-ASD	346	2.89838	.399864	.021497
rh_paracentral_thickness	ASD	292	2.68635	.289849	.016962
	non-ASD	346	2.69029	.214806	.011548
rh_parsopercularis_thickness	ASD	292	2.79505	.266488	.015595
	non-ASD	346	2.82413	.207050	.011131
rh_parsorbitalis_thickness	ASD	292	3.01201	.390371	.022845
	non-ASD	346	3.02593	.304370	.016363
rh_parstriangularis_thickness	ASD	292	2.74582	.286195	.016748
	non-ASD	346	2.75321	.225223	.012108
rh_pericalcarine_thickness	ASD	292	1.93245	.240454	.014071
	non-ASD	346	1.89146	.216140	.011620
rh_postcentral_thickness	ASD	292	2.25123	.192173	.011246
	non-ASD	346	2.23790	.165247	.008884
rh_posteriorcingulate_thickness	ASD	292	2.78265	.259850	.015207
	non-ASD	346	2.82219	.222290	.011950
rh_precentral_thickness	ASD	292	2.63374	.224343	.013129
	non-ASD	346	2.66199	.191018	.010269
rh_precuneus_thickness	ASD	292	2.71859	.216320	.012659
	non-ASD	346	2.72717	.175688	.009445
rh_rostralanteriorcingulate_thickness	ASD	292	2.99259	.419611	.024556
	non-ASD	346	3.12760	.347269	.018669

rh_rostralmiddlefrontal_thickness	ASD	292	2.68353	.279180	.016338
	non-ASD	346	2.64942	.232383	.012493
rh_superiorfrontal_thickness	ASD	292	2.99455	.301522	.017645
	non-ASD	346	3.00287	.246310	.013242
rh_superiorparietal_thickness	ASD	292	2.42308	.196660	.011509
	non-ASD	346	2.42419	.166493	.008951
rh_superiortemporal_thickness	ASD	292	2.93099	.332418	.019453
	non-ASD	346	2.99540	.273007	.014677
rh_supramarginal_thickness	ASD	292	2.77162	.266786	.015612
	non-ASD	346	2.79543	.205316	.011038
rh_frontalpole_thickness	ASD	292	3.14643	.480283	.028106
	non-ASD	346	3.07129	.414665	.022293
rh_temporalpole_thickness	ASD	292	3.37578	.585549	.034267
	non-ASD	346	3.49336	.515135	.027694
rh_transversetemporal_thickness	ASD	292	2.64786	.306990	.017965
	non-ASD	346	2.68806	.281876	.015154
rh_insula_thickness	ASD	292	3.18542	.306532	.017938
	non-ASD	346	3.26698	.232879	.012520
rh_MeanThickness_thickness	ASD	292	2.6998914	.19507874	.01141612
	non-ASD	346	2.7215153	.14347324	.00771317
lh_bankssts_thickness	ASD	292	2.78295	.333336	.019507
	non-ASD	346	2.83285	.261129	.014038
lh_caudalanteriorcingulate_thickness	ASD	292	2.71428	.426586	.024964
	non-ASD	346	2.81910	.332603	.017881
lh_caudalmiddlefrontal_thickness	ASD	292	2.71760	.270214	.015813
	non-ASD	346	2.72933	.236824	.012732
lh_cuneus_thickness	ASD	292	2.21090	.222314	.013010
	non-ASD	346	2.17011	.211321	.011361
lh_entorhinal_thickness	ASD	292	3.18701	.649850	.038030
	non-ASD	346	3.30267	.543781	.029234
lh_fusiform_thickness	ASD	292	2.82065	.292095	.017094
	non-ASD	346	2.89304	.226508	.012177
lh_inferiorparietal_thickness	ASD	292	2.71798	.234375	.013716
	non-ASD	346	2.74172	.183673	.009874
lh_inferiortemporal_thickness	ASD	292	2.85668	.334358	.019567
	non-ASD	346	2.91443	.249911	.013435
lh_isthmuscingulate_thickness	ASD	292	2.72249	.270523	.015831
	non-ASD	346	2.73238	.259167	.013933
lh_lateraloccipital_thickness	ASD	292	2.37202	.179857	.010525
	non-ASD	346	2.35545	.166486	.008950
lh_lateralorbitofrontal_thickness	ASD	292	2.93325	.313432	.018342
	non-ASD	346	2.92583	.240944	.012953
lh_lingual_thickness	ASD	292	2.35822	.189734	.011103
	non-ASD	346	2.35474	.186817	.010043
lh_medialorbitofrontal_thickness	ASD	292	2.75103	.288188	.016865
	non-ASD	346	2.73903	.235118	.012640
lh_middletemporal_thickness	ASD	292	3.01500	.362691	.021225
	non-ASD	346	3.07720	.302519	.016264
lh_parahippocampal_thickness	ASD	292	2.73738	.404816	.023690
	non-ASD	346	2.89018	.330701	.017779

lh_paracentral_thickness	ASD	292	2.69495	.237433	.013895
	non-ASD	346	2.69764	.220592	.011859
lh_parsopercularis_thickness	ASD	292	2.81097	.266224	.015580
	non-ASD	346	2.83755	.209546	.011265
lh_parsorbitalis_thickness	ASD	292	3.03342	.377927	.022117
	non-ASD	346	3.01351	.312136	.016781
lh_parstriangularis_thickness	ASD	292	2.77395	.297805	.017428
	non-ASD	346	2.77365	.232199	.012483
lh_pericalcarine_thickness	ASD	292	1.91261	.236148	.013820
	non-ASD	346	1.87487	.213112	.011457
lh_postcentral_thickness	ASD	292	2.25008	.177065	.010362
	non-ASD	346	2.22864	.179173	.009632
lh_posteriorcingulate_thickness	ASD	292	2.75247	.270844	.015850
	non-ASD	346	2.79479	.233768	.012567
lh_precentral_thickness	ASD	292	2.62495	.225176	.013177
	non-ASD	346	2.64933	.200343	.010771
lh_precuneus_thickness	ASD	292	2.72187	.215809	.012629
	non-ASD	346	2.71165	.198154	.010653
lh_rostralanteriorcingulate_thickness	ASD	292	2.96995	.418040	.024464
	non-ASD	346	3.06172	.339406	.018247
lh_rostralmiddlefrontal_thickness	ASD	292	2.68061	.265817	.015556
	non-ASD	346	2.63865	.220586	.011859
lh_superiorfrontal_thickness	ASD	292	2.98967	.292210	.017100
	non-ASD	346	3.00086	.225085	.012101
lh_superiorparietal_thickness	ASD	292	2.42233	.194418	.011377
	non-ASD	346	2.40144	.169350	.009104
lh_superiortemporal_thickness	ASD	292	2.95259	.338956	.019836
	non-ASD	346	2.99199	.268814	.014452
lh_supramarginal_thickness	ASD	292	2.78046	.263790	.015437
	non-ASD	346	2.80046	.208796	.011225
lh_frontalpole_thickness	ASD	292	3.09566	.450309	.026352
	non-ASD	346	3.05241	.431167	.023180
lh_temporalpole_thickness	ASD	292	3.40903	.607627	.035559
	non-ASD	346	3.49037	.576451	.030990
lh_transversetemporal_thickness	ASD	292	2.67158	.317887	.018603
	non-ASD	346	2.71819	.290973	.015643
lh_insula_thickness	ASD	292	3.18019	.315928	.018488
	non-ASD	346	3.25665	.227045	.012206
lh_MeanThickness_thickness	ASD	292	2.7032923	.19232972	.01125525
	non-ASD	346	2.7157634	.14577674	.00783701
lh_bankssts_volume	ASD	292	2845.77	718.477	42.046
	non-ASD	346	2947.22	623.891	33.541
lh_caudalanteriorcingulate_volume	ASD	292	2196.22	691.409	40.462
	non-ASD	346	2347.63	569.774	30.631
lh_caudalmiddlefrontal_volume	ASD	292	7286.15	1844.058	107.915
	non-ASD	346	7419.81	1431.853	76.977
lh_cuneus_volume	ASD	292	3725.84	804.339	47.070
	non-ASD	346	3694.64	703.069	37.797
lh_entorhinal_volume	ASD	292	1619.48	530.455	31.043
	non-ASD	346	1739.77	528.633	28.419

lh_fusiform_volume	ASD	292	10828.84	2552.200	149.356
	non-ASD	346	11319.52	2221.262	119.416
lh_inferiorparietal_volume	ASD	292	17470.70	3762.779	220.200
	non-ASD	346	18036.69	3380.740	181.750
lh_inferiortemporal_volume	ASD	292	11398.80	3096.837	181.229
	non-ASD	346	11921.99	2526.718	135.837
lh_isthmuscingulate_volume	ASD	292	3230.97	725.358	42.448
	non-ASD	346	3221.95	641.945	34.511
lh_lateraloccipital_volume	ASD	292	13328.91	2353.503	137.728
	non-ASD	346	13207.65	1983.450	106.631
lh_lateralorbitofrontal_volume	ASD	292	8406.24	1921.379	112.440
	non-ASD	346	8866.77	1368.082	73.549
lh_lingual_volume	ASD	292	7766.41	1729.390	101.205
	non-ASD	346	8128.93	1478.306	79.474
lh_medialorbitofrontal_volume	ASD	292	5774.80	1195.898	69.985
	non-ASD	346	6014.26	953.034	51.235
lh_middletemporal_volume	ASD	292	12935.82	3234.914	189.309
	non-ASD	346	13565.36	2869.723	154.277
lh_parahippocampal_volume	ASD	292	2311.79	568.810	33.287
	non-ASD	346	2431.64	500.709	26.918
lh_paracentral_volume	ASD	292	4682.07	954.092	55.834
	non-ASD	346	4599.55	726.865	39.077
lh_parsopercularis_volume	ASD	292	5092.60	1210.132	70.818
	non-ASD	346	5161.06	1005.685	54.066
lh_parsorbitalis_volume	ASD	292	3023.21	745.085	43.603
	non-ASD	346	3109.71	627.460	33.732
lh_parstriangularis_volume	ASD	292	4968.76	1227.155	71.814
	non-ASD	346	5106.88	1127.222	60.600
lh_pericalcarine_volume	ASD	292	2476.65	581.896	34.053
	non-ASD	346	2569.32	547.891	29.455
lh_postcentral_volume	ASD	292	11197.93	1960.787	114.746
	non-ASD	346	11202.07	1763.338	94.798
lh_posteriorcingulate_volume	ASD	292	3882.49	821.695	48.086
	non-ASD	346	4049.90	707.465	38.034
lh_precentral_volume	ASD	292	14928.66	2630.740	153.952
	non-ASD	346	15091.16	2134.373	114.745
lh_precuneus_volume	ASD	292	12624.26	2310.204	135.194
	non-ASD	346	12550.85	1889.120	101.560
lh_rostralanteriorcingulate_volume	ASD	292	2343.68	775.123	45.361
	non-ASD	346	2587.03	684.413	36.794
lh_rostralmiddlefrontal_volume	ASD	292	19839.93	4365.971	255.499
	non-ASD	346	19967.95	3411.247	183.390
lh_superiorfrontal_volume	ASD	292	26381.15	4919.137	287.871
	non-ASD	346	26729.90	3509.233	188.658
lh_superiorparietal_volume	ASD	292	15733.49	2798.166	163.750
	non-ASD	346	15783.60	2182.426	117.328
lh_superiortemporal_volume	ASD	292	13437.37	3050.636	178.525
	non-ASD	346	13514.30	2526.926	135.848
lh_supramarginal_volume	ASD	292	12959.12	2623.130	153.507
	non-ASD	346	12971.39	2240.650	120.458

lh_frontalpole_volume	ASD	292	1306.15	371.470	21.739
	non-ASD	346	1262.42	297.197	15.977
lh_temporalpole_volume	ASD	292	2259.94	673.460	39.411
	non-ASD	346	2347.91	639.631	34.387
lh_transversetemporal_volume	ASD	292	1211.81	345.891	20.242
	non-ASD	346	1199.85	291.675	15.681
lh_insula_volume	ASD	292	6903.30	1356.366	79.375
	non-ASD	346	7171.12	1139.645	61.268
rh_bankssts_volume	ASD	292	2916.32	797.955	46.697
	non-ASD	346	3013.71	668.688	35.949
rh_caudalanteriorcingulate_volume	ASD	292	2093.36	644.773	37.732
	non-ASD	346	2235.85	571.921	30.747
rh_caudalmiddlefrontal_volume	ASD	292	7320.61	1753.991	102.645
	non-ASD	346	7540.32	1469.173	78.983
rh_cuneus_volume	ASD	292	3619.23	744.006	43.540
	non-ASD	346	3610.29	705.961	37.953
rh_entorhinal_volume	ASD	292	1704.97	538.669	31.523
	non-ASD	346	1841.40	612.476	32.927
rh_fusiform_volume	ASD	292	10842.42	2659.041	155.609
	non-ASD	346	11493.70	2255.655	121.265
rh_inferiorparietal_volume	ASD	292	16686.96	3566.697	208.725
	non-ASD	346	16849.21	3075.593	165.345
rh_inferiortemporal_volume	ASD	292	11541.34	3056.412	178.863
	non-ASD	346	12061.14	2684.699	144.330
rh_isthmuscingulate_volume	ASD	292	3298.21	695.010	40.672
	non-ASD	346	3323.04	668.060	35.915
rh_lateraloccipital_volume	ASD	292	13304.16	2216.684	129.722
	non-ASD	346	13142.20	2028.793	109.069
rh_lateralorbitofrontal_volume	ASD	292	8510.46	1835.146	107.394
	non-ASD	346	8963.10	1425.673	76.645
rh_lingual_volume	ASD	292	7926.55	1681.188	98.384
	non-ASD	346	8120.50	1516.722	81.539
rh_medialorbitofrontal_volume	ASD	292	5743.62	1104.632	64.644
	non-ASD	346	5864.68	888.682	47.776
rh_middletemporal_volume	ASD	292	12395.11	3104.467	181.675
	non-ASD	346	13134.82	2699.916	145.148
rh_parahippocampal_volume	ASD	292	2355.17	540.988	31.659
	non-ASD	346	2522.04	573.759	30.845
rh_paracentral_volume	ASD	292	4533.86	919.519	53.811
	non-ASD	346	4430.11	750.366	40.340
rh_parsopercularis_volume	ASD	292	5385.37	1404.346	82.183
	non-ASD	346	5610.06	1244.246	66.891
rh_parsorbitalis_volume	ASD	292	2855.41	686.606	40.181
	non-ASD	346	2914.98	613.695	32.992
rh_parstriangularis_volume	ASD	292	4727.29	1168.890	68.404
	non-ASD	346	4859.65	1000.373	53.780
rh_pericalcarine_volume	ASD	292	2420.99	559.213	32.725
	non-ASD	346	2495.72	528.231	28.398
rh_postcentral_volume	ASD	292	11539.65	2226.533	130.298
	non-ASD	346	11441.52	1851.235	99.523

rh_posteriorcingulate_volume	ASD	292	3980.35	853.102	49.924
	non-ASD	346	3979.27	686.153	36.888
rh_precentral_volume	ASD	292	14953.46	2484.006	145.365
	non-ASD	346	15034.80	1983.603	106.639
rh_precuneus_volume	ASD	292	12376.39	2297.897	134.474
	non-ASD	346	12470.14	1811.245	97.373
rh_rostralanteriorcingulate_volume	ASD	292	2527.75	854.665	50.015
	non-ASD	346	2805.60	698.577	37.556
rh_rostralmiddlefrontal_volume	ASD	292	19658.79	4268.575	249.799
	non-ASD	346	19868.90	3236.985	174.021
rh_superiorfrontal_volume	ASD	292	26554.52	4910.859	287.386
	non-ASD	346	26963.70	3438.678	184.864
rh_superiorparietal_volume	ASD	292	15984.40	2861.596	167.462
	non-ASD	346	16072.54	2322.830	124.876
rh_superiortemporal_volume	ASD	292	13392.12	3079.802	180.232
	non-ASD	346	13815.16	2658.518	142.923
rh_supramarginal_volume	ASD	292	13065.03	2723.782	159.397
	non-ASD	346	13425.45	2521.410	135.552
rh_frontalpole_volume	ASD	292	1210.40	338.091	19.785
	non-ASD	346	1149.08	308.413	16.580
rh_temporalpole_volume	ASD	292	2357.83	725.249	42.442
	non-ASD	346	2469.12	628.763	33.802
rh_transversetemporal_volume	ASD	292	1304.08	379.636	22.217
	non-ASD	346	1326.13	361.071	19.411
rh_insula_volume	ASD	292	6971.18	1236.960	72.388
	non-ASD	346	7209.34	1159.759	62.349
LeftLateralVentricle	ASD	292	5422.339	3256.4011	190.5665
	non-ASD	346	4910.513	2709.3805	145.6572
LeftInfLatVent	ASD	292	367.604	223.9621	13.1064
	non-ASD	346	343.202	245.5282	13.1997
LeftCerebellumWhiteMatter	ASD	292	13806.163	2337.7094	136.8041
	non-ASD	346	13965.010	1925.7537	103.5292
LeftCerebellumCortex	ASD	292	53295.207	7024.6394	411.0859
	non-ASD	346	53938.648	6064.5534	326.0324
LeftThalamusProper	ASD	292	7358.084	809.0230	47.3445
	non-ASD	346	7379.627	770.1110	41.4014
LeftCaudate	ASD	292	4021.842	592.0826	34.6490
	non-ASD	346	4017.018	525.3096	28.2408
LeftPutamen	ASD	292	6696.281	910.2660	53.2693
	non-ASD	346	6628.711	855.5767	45.9961
LeftPallidum	ASD	292	2020.853	304.6637	17.8291
	non-ASD	346	2027.994	281.1634	15.1154
@3rdVentricle	ASD	292	850.200	283.6007	16.5965
	non-ASD	346	758.388	210.5794	11.3208
@4thVentricle	ASD	292	1866.110	669.4408	39.1761
	non-ASD	346	1813.531	559.4106	30.0741
BrainStem	ASD	292	18672.447	2356.9608	137.9307
	non-ASD	346	19200.632	2138.5523	114.9693
LeftHippocampus	ASD	292	3893.514	594.9633	34.8176
	non-ASD	346	3909.805	548.3112	29.4774

LeftAmygdala	ASD	292	1471.228	298.7428	17.4826
	non-ASD	346	1502.284	251.0862	13.4985
CSF	ASD	292	882.434	266.5717	15.5999
	non-ASD	346	855.238	245.6133	13.2043
LeftAccumbensarea	ASD	292	746.557	157.8516	9.2376
	non-ASD	346	736.838	149.3922	8.0314
LeftVentralDC	ASD	292	3580.217	441.2966	25.8249
	non-ASD	346	3573.440	454.1705	24.4164
Leftvessel	ASD	292	66.772	38.3453	2.2440
	non-ASD	346	70.962	41.7587	2.2450
Leftchoroidplexus	ASD	292	1146.592	272.1642	15.9272
	non-ASD	346	1119.904	240.4935	12.9290
RightLateralVentricle	ASD	292	5034.518	3248.1602	190.0842
	non-ASD	346	4427.319	2671.5161	143.6216
RightInfLatVent	ASD	292	358.737	202.9243	11.8752
	non-ASD	346	330.586	179.4825	9.6490
RightCerebellumWhiteMatter	ASD	292	13759.260	2305.9578	134.9460
	non-ASD	346	14058.309	1934.9589	104.0240
RightCerebellumCortex	ASD	292	53699.110	7582.9714	443.7598
	non-ASD	346	54151.384	6942.3995	373.2257
RightThalamusProper	ASD	292	7385.620	773.9986	45.2948
	non-ASD	346	7443.755	746.8925	40.1532
RightCaudate	ASD	292	4314.984	646.3887	37.8270
	non-ASD	346	4313.999	568.3506	30.5547
RightPutamen	ASD	292	6496.696	934.8905	54.7103
	non-ASD	346	6398.791	775.0160	41.6651
RightPallidum	ASD	292	1828.651	279.7210	16.3694
	non-ASD	346	1840.462	261.5615	14.0616
RightHippocampus	ASD	292	3961.382	551.3016	32.2625
	non-ASD	346	3965.521	472.0348	25.3767
RightAmygdala	ASD	292	1556.048	297.0313	17.3824
	non-ASD	346	1589.686	267.7775	14.3958
RightAccumbensarea	ASD	292	745.909	142.8405	8.3591
	non-ASD	346	735.172	117.7121	6.3282
RightVentralDC	ASD	292	3748.000	420.8328	24.6274
	non-ASD	346	3764.832	432.2309	23.2369
Rightvessel	ASD	292	73.748	40.8829	2.3925
	non-ASD	346	84.452	46.1353	2.4802
Rightchoroidplexus	ASD	292	1445.485	313.5606	18.3497
	non-ASD	346	1377.294	314.8898	16.9286
@5thVentricle	ASD	292	1.368	3.6267	.2122
	non-ASD	346	1.420	3.7754	.2030
WMhypointensities	ASD	292	2201.824	1529.7095	89.5195
	non-ASD	346	1737.514	985.2243	52.9660
LeftWMhypointensities	ASD	292	.00	.000 <sup>a</sup>	.000
	non-ASD	346	.00	.000 <sup>a</sup>	.000
RightWMhypointensities	ASD	292	.00	.000 <sup>a</sup>	.000
	non-ASD	346	.00	.000 <sup>a</sup>	.000
nonWMhypointensities	ASD	292	17.818	18.6645	1.0923
	non-ASD	346	15.905	16.2172	.8718



LeftnonWMhypointensities	ASD	292	.00	.000 <sup>a</sup>	.000
	non-ASD	346	.00	.000 <sup>a</sup>	.000
RightnonWMhypointensities	ASD	292	.00	.000 <sup>a</sup>	.000
	non-ASD	346	.00	.000 <sup>a</sup>	.000
OpticChiasm	ASD	292	220.420	60.8256	3.5596
	non-ASD	346	216.522	63.3614	3.4063
CC_Posterior	ASD	292	768.345	135.2535	7.9151
	non-ASD	346	796.419	131.3749	7.0628
CC_Mid_Posterior	ASD	292	383.405	81.7226	4.7825
	non-ASD	346	383.908	78.0690	4.1970
CC_Central	ASD	292	416.242	94.5044	5.5305
	non-ASD	346	419.222	90.8271	4.8829
CC_Mid_Anterior	ASD	292	475.848	154.2578	9.0273
	non-ASD	346	448.688	123.8721	6.6594
CC_Anterior	ASD	292	802.415	173.7126	10.1658
	non-ASD	346	795.260	151.6082	8.1505
BrainSegVol	ASD	292	1149247.65	154436.056	9037.687
	non-ASD	346	1169059.24	125039.681	6722.175
BrainSegVolNotVent	ASD	292	1132218.17	153704.906	8994.899
	non-ASD	346	1153444.29	123637.169	6646.775
BrainSegVolNotVentSurf	ASD	292	1131928.557447	153898.7624408	9006.2438541
	non-ASD	346	1153371.316707	123789.0275334	6654.9393490
lhCortexVol	ASD	292	270787.056397	45808.9069458	2680.7635104
	non-ASD	346	277564.607348	34813.4845168	1871.5845225
rhCortexVol	ASD	292	271253.772318	47006.2170855	2750.8307865
	non-ASD	346	277406.573129	35198.0668041	1892.2597944
CortexVol	ASD	292	542040.828721	92417.0476953	5408.2986414
	non-ASD	346	554971.180476	69729.1868785	3748.6643104
lhCorticalWhiteMatterVol	ASD	292	196558.589557	28098.6545192	1644.3493798
	non-ASD	346	200224.213798	25214.5530534	1355.5427700
rhCorticalWhiteMatterVol	ASD	292	198537.7453683	29510.08221541	1726.94693817
	non-ASD	346	201898.7143301	25630.59240854	1377.90918433
CorticalWhiteMatterVol	ASD	292	395096.334929	57344.9321073	3355.8583199
	non-ASD	346	402122.928126	50735.3165490	2727.5475154
SubCortGrayVol	ASD	292	61881.68	5844.316	342.013
	non-ASD	346	61899.67	5394.655	290.018
TotalGrayVol	ASD	292	710266.838995	102368.9415190	5990.6891763
	non-ASD	346	724269.622673	79162.7883677	4255.8178684
SupraTentorialVol	ASD	292	1014630.167037	146776.3826211	8589.4381016
	non-ASD	346	1033149.287790	117875.2482049	6337.0126027
SupraTentorialVolNotVent	ASD	292	1001020.317726	146063.8855704	8547.7423655
	non-ASD	346	1020787.992992	116557.1080995	6266.1489516
SupraTentorialVolNotVentVox	ASD	292	999208.04	145898.649	8538.073
	non-ASD	346	1018989.55	116333.401	6254.122
MaskVol	ASD	292	1589850.06	140495.662	8221.887
	non-ASD	346	1577429.40	130035.782	6990.767
BrainSegVoltoeTIV	ASD	292	.78945679	.077868694	.004556921
	non-ASD	346	.80889526	.066745547	.003588263
MaskVoltoeTIV	ASD	292	1.09356617	.051926286	.003038756
	non-ASD	346	1.09263153	.072094237	.003875810



lhSurfaceHoles	ASD	292	98.65	83.763	4.902
	non-ASD	346	67.09	49.832	2.679
rhSurfaceHoles	ASD	292	97.54	80.924	4.736
	non-ASD	346	66.40	47.377	2.547
SurfaceHoles	ASD	292	196.19	163.068	9.543
	non-ASD	346	133.50	95.833	5.152
EstimatedTotalIntraCranialVol	ASD	292	1457093.974568	146076.4263994	8548.4762621
	non-ASD	346	1449455.195723	149346.5283685	8028.9191060

a. t cannot be computed because the standard deviations of both groups are 0.

**Supplementary Table S7.** Independent ABIDE samples t- test results.

		Independent Samples t Test						t-test for Equality of Means				95% Confidence Interval of the Difference	
		Levene's Test for Equality of Variances						Significance		Mean Difference	Std. Error Difference		
		F	Sig.	t	df	One-Sided p	Two-Sided p					Lower	Upper
rh_bankssts_area	Equal variances assumed	8.010	.005	-1.715	636	.043	.087	-27.247722	15.891172	-58.453233		-	3.957788
	Equal variances not assumed			-1.687	563.411	.046	.092	-27.247722	16.152715	-58.974618		-	4.479173
rh_caudalanteriorcingulate_area	Equal variances assumed	7.050	.008	-2.152	636	.016	.032	-29.312417	13.618855	-56.055775		-	-2.569058
	Equal variances not assumed			-2.125	576.825	.017	.034	-29.312417	13.796211	-56.409349		-	-2.215484
rh_caudalmiddlefrontal_area	Equal variances assumed	6.198	.013	-1.771	636	.039	.077	-64.08046	36.17946	-135.12610		-	6.96517
	Equal variances not assumed			-1.747	573.818	.041	.081	-64.08046	36.67911	-136.12216		-	7.96123
rh_cuneus_area	Equal variances assumed	2.029	.155	-.637	636	.262	.524	-14.199940	22.296806	-57.984199		-	29.584319
	Equal variances not assumed			-.632	593.809	.264	.528	-14.199940	22.481943	-58.353734		-	29.953854
rh_entorhinal_area	Equal variances assumed	.004	.951	-.970	636	.166	.333	-9.885514	10.194537	-29.904535		-	10.133507
	Equal variances not assumed			-.976	630.593	.165	.329	-9.885514	10.127928	-29.774062		-	10.003034
rh_fusiform_area	Equal variances assumed	10.564	.001	-2.703	636	.004	.007	-126.930816	46.955669	-219.13707		-	34.723924
	Equal variances not assumed			-2.669	577.416	.004	.008	-126.930816	47.559825	-220.342159		-	33.519472
rh_inferiorparietal_area	Equal variances assumed	7.455	.007	-1.117	636	.132	.264	-86.869129	77.736023	-239.519431		-	65.781173
	Equal variances not assumed			-1.104	581.033	.135	.270	-86.869129	78.661062	-241.363797		-	67.625540
rh_inferiortemporal_area	Equal variances assumed	8.015	.005	-2.661	636	.004	.008	-136.144198	51.161032	-236.609166		-	35.679230

	Equal variances not assumed			-2.625	574.688	.004	.009	-136.144198	51.855990	-237.994572	-34.293824
rh_isthmuscingulate_area	Equal variances assumed	.927	.336	.110	636	.456	.912	1.670053	15.170531	-28.120333	31.460438
	Equal variances not assumed			.109	600.490	.456	.913	1.670053	15.265656	-28.310511	31.650616
rh_lateraloccipital_area	Equal variances assumed	5.551	.019	-.708	636	.239	.479	-43.192887	60.964647	162.909223	76.523450
	Equal variances not assumed			-.699	572.539	.243	.485	-43.192887	61.826815	164.627925	78.242151
rh_lateralorbitofrontal_area	Equal variances assumed	6.684	.010	-3.992	636	<.001	<.001	-150.875456	37.795863	225.09528	76.655685
	Equal variances not assumed			-3.936	572.851	<.001	<.001	-150.875456	38.327325	226.154682	75.596231
rh_lingual_area	Equal variances assumed	3.227	.073	-3.020	636	.001	.003	-137.989383	45.686267	227.703550	48.275216
	Equal variances not assumed			-2.985	581.800	.001	.003	137.989383	46.220450	228.768648	47.210118
rh_medialorbitofrontal_area	Equal variances assumed	9.518	.002	-3.351	636	<.001	<.001	-87.898278	26.229502	139.405176	36.391380
	Equal variances not assumed			-3.294	560.157	<.001	.001	-87.898278	26.682363	140.307989	35.488567
rh_middletemporal_area	Equal variances assumed	4.168	.042	-2.484	636	.007	.013	-119.493720	48.096040	213.939960	25.047480
	Equal variances not assumed			-2.465	595.174	.007	.014	119.493720	48.475900	214.698343	24.289098
rh_parahippocampal_area	Equal variances assumed	1.523	.218	-1.036	636	.150	.300	-12.892	12.441	-37.322	11.538
	Equal variances not assumed			-1.056	633.748	.146	.291	-12.892	12.204	-36.858	11.074
rh_paracentral_area	Equal variances assumed	11.499	<.001	.863	636	.194	.388	18.086246	20.957045	23.067122	59.239615
	Equal variances not assumed			.846	547.528	.199	.398	18.086246	21.383003	23.916517	60.089009
rh_parsopercularis_area	Equal variances assumed	8.303	.004	-1.508	636	.066	.132	-34.636222	22.965068	79.732748	10.460305
	Equal variances not assumed			-1.488	574.017	.069	.137	-34.636222	23.281036	80.362629	11.090186
rh_parsorbitalis_area	Equal variances assumed	2.678	.102	-2.180	636	.015	.030	-24.510986	11.241487	46.585904	-2.436067
	Equal variances not assumed			-2.167	600.519	.015	.031	24.510986	11.311875	46.726629	-2.295342
rh_parstriangularis_area	Equal variances assumed	1.038	.309	-2.322	636	.010	.021	-58.023008	24.986236	107.088504	-8.957511
	Equal variances not assumed			-2.310	603.631	.011	.021	58.023008	25.117802	107.351903	-8.694112
rh_pericalcarine_area	Equal variances assumed	5.768	.017	-3.513	636	<.001	<.001	-86.904772	24.736565	135.479988	38.329556

	Equal variances not assumed			-3.479	588.004	<.001	<.001	-86.904772	24.983365	-135.972266	-37.837279
rh_postcentral_area	Equal variances assumed	4.033	.045	-1.621	636	.053	.105	-85.501853	52.732201	-189.052125	18.048420
	Equal variances not assumed			-1.608	592.664	.054	.108	-85.501853	53.187781	-189.961313	18.957608
rh_posteriorcingulate_area	Equal variances assumed	6.272	.013	-.982	636	.163	.327	-19.188436	19.544255	-57.567509	19.190636
	Equal variances not assumed			-.968	572.592	.167	.333	-19.188436	19.820384	-58.117963	19.741090
rh_precentral_area	Equal variances assumed	10.378	.001	-.458	636	.323	.647	-26.734162	58.342714	-141.301805	87.833481
	Equal variances not assumed			-.450	559.167	.326	.653	-26.734162	59.364237	-143.338319	89.869994
rh_precuneus_area	Equal variances assumed	3.840	.050	-.174	636	.431	.862	-9.569578	55.051730	-117.674713	98.535557
	Equal variances not assumed			-.172	588.572	.432	.863	-9.569578	55.592145	-118.752701	99.613545
rh_rostralanteriorcingulate_area	Equal variances assumed	4.653	.031	-3.182	636	<.001	.002	-39.961131	12.557730	-64.620757	15.301505
	Equal variances not assumed			-3.144	580.178	<.001	.002	-39.961131	12.710055	-64.924457	14.997804
rh_rostralmiddlefrontal_area	Equal variances assumed	7.115	.008	-2.039	636	.021	.042	-181.260311	88.897421	-355.828262	-6.692360
	Equal variances not assumed			-2.009	569.423	.023	.045	-181.260311	90.225754	-358.476215	-4.044406
rh_superiorfrontal_area	Equal variances assumed	9.717	.002	-1.748	636	.040	.081	-154.847377	88.571236	-328.774799	19.080045
	Equal variances not assumed			-1.717	556.189	.043	.087	-154.847377	90.186617	-331.995390	22.300636
rh_superiorparietal_area	Equal variances assumed	10.372	.001	-1.419	636	.078	.156	-95.243258	67.103215	-227.013905	36.527390
	Equal variances not assumed			-1.398	568.936	.081	.163	-95.243258	68.114224	-229.029291	38.542776
rh_superiortemporal_area	Equal variances assumed	4.740	.030	-1.351	636	.089	.177	-64.117454	47.471857	-157.337986	29.103078
	Equal variances not assumed			-1.337	587.876	.091	.182	-64.117454	47.947207	-158.286128	30.051220
rh_supramarginal_area	Equal variances assumed	2.180	.140	-.703	636	.241	.482	-37.456216	53.294558	-142.110791	67.198359
	Equal variances not assumed			-.699	603.778	.242	.485	-37.456216	53.572644	-142.667574	67.755142
rh_frontalpole_area	Equal variances assumed	9.525	.002	1.392	636	.082	.165	5.693877	4.091361	-2.340332	13.728086
	Equal variances not assumed			1.373	575.500	.085	.170	5.693877	4.146067	-2.449391	13.837145
rh_temporalpole_area	Equal variances assumed	.000	.983	-1.325	636	.093	.186	-10.374261	7.827049	-25.744244	4.995722

	Equal variances not assumed			-1.355	630.626	.088	.176	-10.374261	7.657915	-25.412361	4.663839
rh_transversetemporal_area	Equal variances assumed	2.851	.092	-.535	636	.296	.593	-3.042005	5.684103	-14.203884	8.119874
	Equal variances not assumed			-.531	592.210	.298	.596	-3.042005	5.733963	-14.303381	8.219371
rh_insula_area	Equal variances assumed	.055	.814	-1.196	636	.116	.232	-33.991775	28.426613	-89.813142	21.829592
	Equal variances not assumed			-1.203	629.772	.115	.229	-33.991775	28.257129	-89.481373	21.497823
rh_WhiteSurfArea_area	Equal variances assumed	16.406	<.001	-2.448	635	.007	.015	-2242.7174	916.2932	-4042.0486	-443.3862
	Equal variances not assumed			-2.395	538.563	.008	.017	-2242.7174	936.5541	-4082.4642	-402.9706
lh_bankssts_area	Equal variances assumed	.665	.415	-1.974	636	.024	.049	-34.078	17.264	-67.979	-.176
	Equal variances not assumed			-1.970	613.594	.025	.049	-34.078	17.295	-68.042	-.114
lh_caudalanteriorcingulate_area	Equal variances assumed	1.711	.191	-1.998	636	.023	.046	-23.917	11.973	-47.428	-.406
	Equal variances not assumed			-1.976	584.499	.024	.049	-23.917	12.104	-47.689	-.144
lh_caudalmiddlefrontal_area	Equal variances assumed	10.615	.001	-2.213	636	.014	.027	-77.545	35.045	-146.363	-8.727
	Equal variances not assumed			-2.171	552.327	.015	.030	-77.545	35.717	-147.703	-7.387
lh_cuneus_area	Equal variances assumed	4.993	.026	-1.974	636	.024	.049	-41.616	21.085	-83.021	-.212
	Equal variances not assumed			-1.952	584.709	.026	.051	-41.616	21.315	-83.479	.246
lh_entorhinal_area	Equal variances assumed	.012	.913	-3.144	636	<.001	.002	-32.040	10.191	-52.052	-12.028
	Equal variances not assumed			-3.213	630.784	<.001	.001	-32.040	9.972	-51.622	-12.458
lh_fusiform_area	Equal variances assumed	4.560	.033	-2.913	636	.002	.004	-134.713	46.241	-225.516	-43.910
	Equal variances not assumed			-2.890	594.751	.002	.004	-134.713	46.612	-226.257	-43.169
lh_inferiorparietal_area	Equal variances assumed	3.327	.069	-1.851	636	.032	.065	-119.943	64.816	-247.221	7.336
	Equal variances not assumed			-1.834	591.351	.034	.067	-119.943	65.400	-248.388	8.503
lh_inferiortemporal_area	Equal variances assumed	7.869	.005	-2.835	636	.002	.005	-149.026	52.560	-252.238	-45.813
	Equal variances not assumed			-2.802	581.061	.003	.005	-149.026	53.185	-253.485	-44.567
lh_isthmuscingulate_area	Equal variances assumed	5.055	.025	.727	636	.234	.467	12.819	17.627	-21.795	47.432
	Equal variances not assumed			.718	576.208	.237	.473	12.819	17.859	-22.258	47.896
lh_lateraloccipital_area	Equal variances assumed	4.497	.034	-.759	636	.224	.448	-43.147	56.851	-154.786	68.492
	Equal variances not assumed			-.750	583.293	.227	.453	-43.147	57.493	-156.066	69.772
lh_lateralorbitofrontal_area	Equal variances assumed	11.041	<.001	-4.842	636	<.001	<.001	-183.952	37.989	-258.551	-109.354
	Equal variances not assumed			-4.755	555.616	<.001	<.001	-183.952	38.687	-259.943	-107.962
lh_lingual_area	Equal variances assumed	2.585	.108	-3.551	636	<.001	<.001	-169.936	47.854	-263.907	-75.965
	Equal variances not assumed			-3.514	585.723	<.001	<.001	-169.936	48.362	-264.920	-74.952

lh_medialorbitofrontal_area	Equal variances assumed	1.208	.272	-4.263	636	<.001	<.001	-96.979	22.751	-141.655	-52.302
	Equal variances not assumed			-4.218	585.561	<.001	<.001	-96.979	22.994	-142.138	-51.819
lh_middletemporal_area	Equal variances assumed	4.026	.045	-3.564	636	<.001	<.001	-156.607	43.938	-242.889	-70.325
	Equal variances not assumed			-3.537	596.294	<.001	<.001	-156.607	44.271	-243.552	-69.661
lh_parahippocampal_area	Equal variances assumed	.162	.687	-1.749	636	.040	.081	-23.866	13.649	-50.669	2.936
	Equal variances not assumed			-1.739	602.885	.041	.083	-23.866	13.724	-50.820	3.087
lh_paracentral_area	Equal variances assumed	19.176	<.001	1.432	636	.076	.153	23.541	16.442	-8.747	55.829
	Equal variances not assumed			1.397	529.292	.081	.163	23.541	16.847	-9.554	56.636
lh_parsopercularis_area	Equal variances assumed	1.052	.306	-2.167	636	.015	.031	-55.497	25.613	-105.794	-5.200
	Equal variances not assumed			-2.156	604.112	.016	.032	-55.497	25.744	-106.056	-4.938
lh_parsorbitalis_area	Equal variances assumed	9.313	.002	-1.980	636	.024	.048	-17.766	8.971	-35.383	-.149
	Equal variances not assumed			-1.947	560.944	.026	.052	-17.766	9.124	-35.689	.156
lh_parstriangularis_area	Equal variances assumed	2.991	.084	-1.944	636	.026	.052	-37.617	19.354	-75.623	.388
	Equal variances not assumed			-1.923	584.573	.028	.055	-37.617	19.566	-76.045	.810
lh_pericalcarine_area	Equal variances assumed	.615	.433	-3.918	636	<.001	<.001	-86.308	22.029	-129.565	-43.050
	Equal variances not assumed			-3.892	598.915	<.001	<.001	-86.308	22.178	-129.863	-42.752
lh_postcentral_area	Equal variances assumed	6.138	.013	-.483	636	.315	.629	-24.698	51.114	-125.070	75.674
	Equal variances not assumed			-.476	569.270	.317	.634	-24.698	51.880	-126.597	77.201
lh_posteriorcingulate_area	Equal variances assumed	4.166	.042	.003	636	.499	.998	.044	16.603	-32.560	32.648
	Equal variances not assumed			.003	583.578	.499	.998	.044	16.789	-32.931	33.019
lh_precentral_area	Equal variances assumed	5.323	.021	-1.018	636	.155	.309	-53.142	52.219	-155.684	49.400
	Equal variances not assumed			-1.002	565.649	.158	.317	-53.142	53.049	-157.339	51.055
lh_precuneus_area	Equal variances assumed	11.218	<.001	-1.244	636	.107	.214	-59.658	47.948	-153.814	34.497
	Equal variances not assumed			-1.225	566.642	.111	.221	-59.658	48.698	-155.310	35.993
lh_rostralanteriorcingulate_area	Equal variances assumed	12.037	<.001	-3.466	636	<.001	<.001	-51.292	14.798	-80.351	-22.233
	Equal variances not assumed			-3.407	560.191	<.001	<.001	-51.292	15.054	-80.860	-21.724
lh_rostralmiddlefrontal_area	Equal variances assumed	8.655	.003	-2.573	636	.005	.010	-206.830	80.371	-364.654	-49.006
	Equal variances not assumed			-2.532	564.186	.006	.012	-206.830	81.678	-367.260	-46.400
lh_superiorfrontal_area	Equal variances assumed	6.213	.013	-2.736	636	.003	.006	-235.685	86.140	-404.837	-66.532
	Equal variances not assumed			-2.691	561.880	.004	.007	-235.685	87.590	-407.729	-63.640
lh_superiorparietal_area	Equal variances assumed	14.525	<.001	-1.569	636	.059	.117	-101.317	64.568	-228.108	25.475
	Equal variances not assumed			-1.535	539.822	.063	.125	-101.317	65.998	-230.960	28.327
lh_superiortemporal_area	Equal variances assumed	4.843	.028	-.966	636	.167	.334	-47.233	48.894	-143.246	48.780
	Equal variances not assumed			-.954	579.439	.170	.340	-47.233	49.497	-144.448	49.982

lh_supramarginal_area	Equal variances assumed	.698	.404	-.844	636	.199	.399	-46.740	55.363	-155.456	61.976
	Equal variances not assumed			-.843	612.888	.200	.400	-46.740	55.476	-155.687	62.207
lh_frontalpole_area	Equal variances assumed	.066	.797	.334	636	.369	.739	1.145	3.433	-5.597	7.887
	Equal variances not assumed			.331	595.250	.370	.741	1.145	3.460	-5.651	7.941
lh_temporalpole_area	Equal variances assumed	.662	.416	-1.715	636	.043	.087	-11.446	6.673	-24.549	1.658
	Equal variances not assumed			-1.705	600.826	.044	.089	-11.446	6.714	-24.632	1.741
lh_transversetemporal_area	Equal variances assumed	8.615	.003	1.390	636	.082	.165	9.831	7.071	-4.055	23.717
	Equal variances not assumed			1.364	553.358	.087	.173	9.831	7.205	-4.322	23.984
lh_insula_area	Equal variances assumed	3.902	.049	-.689	636	.246	.491	-17.467	25.358	-67.263	32.329
	Equal variances not assumed			-.684	599.242	.247	.494	-17.467	25.527	-67.600	32.666
lh_WhiteSurfArea_area	Equal variances assumed	12.075	<.001	-2.570	636	.005	.010	-2292.6070	891.9239	-4044.0787	-541.1352
	Equal variances not assumed			-2.524	556.262	.006	.012	-2292.6070	908.1750	-4076.4785	-508.7354
lh_bankssts_meancurv	Equal variances assumed	8.390	.004	3.881	636	<.001	<.001	.005819	.001499	.002875	.008763
	Equal variances not assumed			3.773	510.739	<.001	<.001	.005819	.001542	.002789	.008849
lh_caudalanteriorcingulate_meancurv	Equal variances assumed	1.038	.309	-.167	636	.434	.867	-.000265	.001587	-.003381	.002851
	Equal variances not assumed			-.165	582.264	.434	.869	-.000265	.001605	-.003417	.002887
lh_caudalmiddlefrontal_meancurv	Equal variances assumed	13.093	<.001	5.020	636	<.001	<.001	.008081	.001610	.004920	.011243
	Equal variances not assumed			4.919	547.210	<.001	<.001	.008081	.001643	.004854	.011308
lh_cuneus_meancurv	Equal variances assumed	8.461	.004	4.787	636	<.001	<.001	.008890	.001857	.005243	.012538
	Equal variances not assumed			4.591	450.469	<.001	<.001	.008890	.001937	.005084	.012696
lh_entorhinal_meancurv	Equal variances assumed	7.905	.005	2.784	636	.003	.006	.009926	.003566	.002924	.016929
	Equal variances not assumed			2.720	534.175	.003	.007	.009926	.003650	.002757	.017096
lh_fusiform_meancurv	Equal variances assumed	16.755	<.001	6.619	636	<.001	<.001	.010911	.001649	.007674	.014148
	Equal variances not assumed			6.408	492.968	<.001	<.001	.010911	.001703	.007565	.014257
lh_inferiorparietal_meancurv	Equal variances assumed	13.748	<.001	5.882	636	<.001	<.001	.009749	.001657	.006494	.013003
	Equal variances not assumed			5.635	445.814	<.001	<.001	.009749	.001730	.006349	.013149
lh_inferiortemporal_meancurv	Equal variances assumed	10.486	.001	6.478	636	<.001	<.001	.010101	.001559	.007039	.013163
	Equal variances not assumed			6.310	520.831	<.001	<.001	.010101	.001601	.006956	.013246
lh_isthmuscingulate_meancurv	Equal variances assumed	7.178	.008	3.413	636	<.001	<.001	.004280	.001254	.001818	.006742
	Equal variances not assumed			3.350	553.943	<.001	<.001	.004280	.001277	.001771	.006789
lh_lateraloccipital_meancurv	Equal variances assumed	23.507	<.001	7.223	636	<.001	<.001	.012069	.001671	.008788	.015350
	Equal variances not assumed			6.999	496.947	<.001	<.001	.012069	.001724	.008681	.015457
lh_lateralorbitofrontal_meancurv	Equal variances assumed	14.581	<.001	4.019	636	<.001	<.001	.005960	.001483	.003048	.008872

	Equal variances not assumed			3.875	475.184	<.001	<.001	.005960	.001538	.002938	.008981
lh_lingual_meancurv	Equal variances assumed	18.784	<.001	5.640	636	<.001	<.001	.009863	.001749	.006429	.013297
	Equal variances not assumed			5.502	527.246	<.001	<.001	.009863	.001793	.006341	.013385
lh_medialorbitofrontal_meancurv	Equal variances assumed	3.785	.052	3.913	636	<.001	<.001	.006332	.001618	.003154	.009509
	Equal variances not assumed			3.785	488.929	<.001	<.001	.006332	.001673	.003045	.009619
lh_middletemporal_meancurv	Equal variances assumed	6.321	.012	5.518	636	<.001	<.001	.009182	.001664	.005914	.012449
	Equal variances not assumed			5.379	523.721	<.001	<.001	.009182	.001707	.005828	.012535
lh parahippocampal_meancurv	Equal variances assumed	4.736	.030	3.396	636	<.001	<.001	.008170	.002406	.003446	.012894
	Equal variances not assumed			3.350	573.777	<.001	<.001	.008170	.002439	.003379	.012960
lh_paracentral_meancurv	Equal variances assumed	11.329	<.001	5.059	636	<.001	<.001	.009143	.001807	.005594	.012693
	Equal variances not assumed			4.936	528.098	<.001	<.001	.009143	.001852	.005504	.012782
lh_parsopercularis_meancurv	Equal variances assumed	14.886	<.001	5.621	636	<.001	<.001	.008647	.001538	.005626	.011667
	Equal variances not assumed			5.444	494.129	<.001	<.001	.008647	.001588	.005526	.011768
lh_parsorbitalis_meancurv	Equal variances assumed	9.717	.002	4.406	636	<.001	<.001	.009324	.002116	.005169	.013479
	Equal variances not assumed			4.337	565.391	<.001	<.001	.009324	.002150	.005101	.013547
lh_parstriangularis_meancurv	Equal variances assumed	13.811	<.001	4.358	636	<.001	<.001	.007703	.001767	.004232	.011173
	Equal variances not assumed			4.209	481.887	<.001	<.001	.007703	.001830	.004107	.011298
lh_pericalcarine_meancurv	Equal variances assumed	14.809	<.001	4.923	636	<.001	<.001	.010756	.002185	.006466	.015047
	Equal variances not assumed			4.719	448.463	<.001	<.001	.010756	.002279	.006277	.015236
lh_postcentral_meancurv	Equal variances assumed	12.728	<.001	5.676	636	<.001	<.001	.011124	.001960	.007276	.014973
	Equal variances not assumed			5.538	528.200	<.001	<.001	.011124	.002009	.007179	.015070
lh_posteriorcingulate_meancurv	Equal variances assumed	1.148	.284	2.008	636	.023	.045	.002553	.001271	.000057	.005050
	Equal variances not assumed			1.998	603.691	.023	.046	.002553	.001278	.000043	.005063
lh_precentral_meancurv	Equal variances assumed	11.123	<.001	5.459	636	<.001	<.001	.009568	.001753	.006127	.013010
	Equal variances not assumed			5.342	540.706	<.001	<.001	.009568	.001791	.006050	.013087
lh_precuneus_meancurv	Equal variances assumed	12.993	<.001	4.311	636	<.001	<.001	.005288	.001226	.002879	.007696
	Equal variances not assumed			4.184	503.705	<.001	<.001	.005288	.001264	.002805	.007771
lh_rostralanteriorcingulate_meancurv	Equal variances assumed	6.921	.009	.298	636	.383	.766	.000479	.001607	-.002676	.003634
	Equal variances not assumed			.291	527.977	.386	.771	.000479	.001647	-.002756	.003714
lh_rostralmiddlefrontal_meancurv	Equal variances assumed	11.853	<.001	5.193	636	<.001	<.001	.007197	.001386	.004475	.009918
	Equal variances not assumed			5.061	522.460	<.001	<.001	.007197	.001422	.004403	.009990
lh_superiorfrontal_meancurv	Equal variances assumed	13.840	<.001	5.336	636	<.001	<.001	.007616	.001427	.004813	.010418
	Equal variances not assumed			5.207	529.180	<.001	<.001	.007616	.001462	.004743	.010489
lh_superiorparietal_meancurv	Equal variances assumed	18.709	<.001	5.104	636	<.001	<.001	.008869	.001738	.005457	.012281



	Equal variances not assumed			4.926	478.854	<.001	<.001	.008869	.001800	.005331	.012407
lh_superiortemporal_meancurv	Equal variances assumed	12.788	<.001	5.599	636	<.001	<.001	.010641	.001900	.006909	.014373
	Equal variances not assumed			5.450	517.371	<.001	<.001	.010641	.001952	.006805	.014476
lh_supramarginal_meancurv	Equal variances assumed	21.534	<.001	5.142	636	<.001	<.001	.007454	.001450	.004608	.010301
	Equal variances not assumed			4.982	496.038	<.001	<.001	.007454	.001496	.004514	.010394
lh_frontalpole_meancurv	Equal variances assumed	.812	.368	3.163	636	<.001	.002	.008445	.002670	.003202	.013689
	Equal variances not assumed			3.142	599.108	<.001	.002	.008445	.002688	.003166	.013725
lh_temporalpole_meancurv	Equal variances assumed	4.523	.034	3.439	636	<.001	<.001	.012159	.003536	.005215	.019102
	Equal variances not assumed			3.367	543.710	<.001	<.001	.012159	.003611	.005066	.019252
lh_transversetemporal_meancurv	Equal variances assumed	7.513	.006	4.167	636	<.001	<.001	.007795	.001871	.004122	.011468
	Equal variances not assumed			4.101	564.543	<.001	<.001	.007795	.001901	.004062	.011529
lh_insula_meancurv	Equal variances assumed	7.801	.005	2.670	636	.004	.008	.003999	.001498	.001057	.006940
	Equal variances not assumed			2.603	525.683	.005	.009	.003999	.001536	.000981	.007016
rh_bankssts_meancurv	Equal variances assumed	9.847	.002	2.688	636	.004	.007	.004262	.001585	.001149	.007375
	Equal variances not assumed			2.580	453.599	.005	.010	.004262	.001652	.001016	.007508
rh_caudalanteriorcingulate_meancurv	Equal variances assumed	3.218	.073	.399	636	.345	.690	.000565	.001417	-.002217	.003348
	Equal variances not assumed			.389	524.627	.349	.697	.000565	.001453	-.002290	.003420
rh_caudalmiddlefrontal_meancurv	Equal variances assumed	18.416	<.001	5.334	636	<.001	<.001	.009469	.001775	.005983	.012955
	Equal variances not assumed			5.173	501.120	<.001	<.001	.009469	.001830	.005872	.013065
rh_cuneus_meancurv	Equal variances assumed	6.499	.011	3.892	636	<.001	<.001	.008855	.002275	.004387	.013323
	Equal variances not assumed			3.727	443.350	<.001	<.001	.008855	.002376	.004185	.013525
rh_entorhinal_meancurv	Equal variances assumed	16.560	<.001	3.569	636	<.001	<.001	.012998	.003642	.005846	.020150
	Equal variances not assumed			3.474	517.555	<.001	<.001	.012998	.003741	.005648	.020349
rh_fusiform_meancurv	Equal variances assumed	8.968	.003	4.859	636	<.001	<.001	.007907	.001627	.004712	.011102
	Equal variances not assumed			4.707	495.716	<.001	<.001	.007907	.001680	.004607	.011207
rh_inferiorparietal_meancurv	Equal variances assumed	14.133	<.001	5.149	636	<.001	<.001	.008055	.001564	.004983	.011127
	Equal variances not assumed			4.941	452.786	<.001	<.001	.008055	.001630	.004851	.011259
rh_inferiortemporal_meancurv	Equal variances assumed	12.716	<.001	4.922	636	<.001	<.001	.007625	.001549	.004583	.010667
	Equal variances not assumed			4.809	534.397	<.001	<.001	.007625	.001585	.004510	.010739
rh_isthmuscingulate_meancurv	Equal variances assumed	5.483	.020	2.419	636	.008	.016	.003627	.001499	.000683	.006571
	Equal variances not assumed			2.321	451.927	.010	.021	.003627	.001563	.000556	.006698
rh_lateraloccipital_meancurv	Equal variances assumed	13.715	<.001	6.434	636	<.001	<.001	.009626	.001496	.006688	.012564
	Equal variances not assumed			6.253	510.601	<.001	<.001	.009626	.001539	.006602	.012650
rh_lateralorbitofrontal_meancurv	Equal variances assumed	8.835	.003	4.079	636	<.001	<.001	.006060	.001485	.003143	.008977



	Equal variances not assumed			3.950	493.823	<.001	<.001	.006060	.001534	.003046	.009074
rh_lingual_meancurv	Equal variances assumed	13.558	<.001	5.023	636	<.001	<.001	.008192	.001631	.004989	.011394
	Equal variances not assumed			4.929	552.118	<.001	<.001	.008192	.001662	.004927	.011456
rh_medialorbitofrontal_meancurv	Equal variances assumed	3.846	.050	3.111	636	<.001	.002	.004259	.001369	.001571	.006947
	Equal variances not assumed			3.055	556.237	.001	.002	.004259	.001394	.001521	.006997
rh_middletemporal_meancurv	Equal variances assumed	10.701	.001	4.505	636	<.001	<.001	.007211	.001601	.004068	.010355
	Equal variances not assumed			4.406	538.748	<.001	<.001	.007211	.001637	.003996	.010426
rh parahippocampal_meancurv	Equal variances assumed	2.187	.140	2.764	636	.003	.006	.006384	.002309	.001849	.010919
	Equal variances not assumed			2.728	576.114	.003	.007	.006384	.002340	.001788	.010980
rh_paracentral_meancurv	Equal variances assumed	9.296	.002	4.137	636	<.001	<.001	.007233	.001748	.003800	.010666
	Equal variances not assumed			4.008	495.485	<.001	<.001	.007233	.001805	.003687	.010779
rh_parsopercularis_meancurv	Equal variances assumed	6.732	.010	4.848	636	<.001	<.001	.006940	.001432	.004128	.009751
	Equal variances not assumed			4.744	540.943	<.001	<.001	.006940	.001463	.004066	.009813
rh_parsorbitalis_meancurv	Equal variances assumed	7.611	.006	5.463	636	<.001	<.001	.011090	.002030	.007104	.015076
	Equal variances not assumed			5.355	547.628	<.001	<.001	.011090	.002071	.007022	.015159
rh_parstriangularis_meancurv	Equal variances assumed	21.107	<.001	5.978	636	<.001	<.001	.010676	.001786	.007170	.014183
	Equal variances not assumed			5.739	455.003	<.001	<.001	.010676	.001860	.007021	.014332
rh_pericalcarine_meancurv	Equal variances assumed	18.749	<.001	5.724	636	<.001	<.001	.013513	.002361	.008878	.018149
	Equal variances not assumed			5.501	459.477	<.001	<.001	.013513	.002457	.008686	.018341
rh_postcentral_meancurv	Equal variances assumed	9.012	.003	4.802	636	<.001	<.001	.009924	.002067	.005866	.013983
	Equal variances not assumed			4.704	545.073	<.001	<.001	.009924	.002110	.005780	.014069
rh_posteriorcingulate_meancurv	Equal variances assumed	9.358	.002	3.042	636	.001	.002	.003775	.001241	.001338	.006212
	Equal variances not assumed			2.931	472.328	.002	.004	.003775	.001288	.001244	.006305
rh_precentral_meancurv	Equal variances assumed	9.288	.002	5.093	636	<.001	<.001	.009032	.001773	.005550	.012514
	Equal variances not assumed			4.980	537.351	<.001	<.001	.009032	.001814	.005469	.012595
rh_precuneus_meancurv	Equal variances assumed	14.183	<.001	3.935	636	<.001	<.001	.005066	.001287	.002538	.007595
	Equal variances not assumed			3.791	470.135	<.001	<.001	.005066	.001337	.002440	.007693
rh_rostralanteriorcingulate_meancurv	Equal variances assumed	4.806	.029	-.183	636	.428	.855	-.000358	.001960	-.004207	.003492
	Equal variances not assumed			-.176	478.336	.430	.860	-.000358	.002031	-.004349	.003634
rh_rostralmiddlefrontal_meancurv	Equal variances assumed	9.928	.002	4.934	636	<.001	<.001	.006975	.001414	.004199	.009751
	Equal variances not assumed			4.818	531.095	<.001	<.001	.006975	.001448	.004131	.009820
rh_superiorfrontal_meancurv	Equal variances assumed	14.835	<.001	5.673	636	<.001	<.001	.007892	.001391	.005160	.010624
	Equal variances not assumed			5.535	527.781	<.001	<.001	.007892	.001426	.005091	.010694
rh_superiorparietal_meancurv	Equal variances assumed	15.271	<.001	4.852	636	<.001	<.001	.008623	.001777	.005133	.012113

	Equal variances not assumed			4.716	511.432	<.001	<.001	.008623	.001828	.005031	.012215
rh_superiortemporal_mearcurv	Equal variances assumed	5.904	.015	4.833	636	<.001	<.001	.009566	.001979	.005679	.013452
	Equal variances not assumed			4.705	517.408	<.001	<.001	.009566	.002033	.005571	.013560
rh_supramarginal_mearcurv	Equal variances assumed	14.504	<.001	4.093	636	<.001	<.001	.006752	.001650	.003513	.009992
	Equal variances not assumed			3.946	473.054	<.001	<.001	.006752	.001711	.003390	.010115
rh_frontalpole_mearcurv	Equal variances assumed	3.929	.048	4.510	636	<.001	<.001	.011051	.002450	.006240	.015863
	Equal variances not assumed			4.434	560.825	<.001	<.001	.011051	.002492	.006156	.015947
rh_temporalpole_mearcurv	Equal variances assumed	6.289	.012	2.636	636	.004	.009	.008689	.003297	.002215	.015164
	Equal variances not assumed			2.595	566.846	.005	.010	.008689	.003348	.002113	.015266
rh_transversetemporal_mearcurv	Equal variances assumed	6.657	.010	4.185	636	<.001	<.001	.008601	.002055	.004565	.012636
	Equal variances not assumed			4.104	549.373	<.001	<.001	.008601	.002096	.004484	.012717
rh_insula_mearcurv	Equal variances assumed	5.640	.018	2.313	636	.011	.021	.003335	.001442	.000503	.006166
	Equal variances not assumed			2.266	545.031	.012	.024	.003335	.001472	.000443	.006226
rh_bankssts_thickness	Equal variances assumed	18.378	<.001	-1.918	636	.028	.055	-.044566	.023230	-.090182	.001051
	Equal variances not assumed			-1.867	515.499	.031	.063	-.044566	.023875	-.091470	.002338
rh_caudalanteriorcingulate_thickness	Equal variances assumed	1.671	.197	-3.440	636	<.001	<.001	-.097282	.028279	-.152813	-.041750
	Equal variances not assumed			-3.400	581.451	<.001	<.001	-.097282	.028612	-.153478	-.041085
rh_caudalmiddlefrontal_thickness	Equal variances assumed	9.443	.002	-1.101	636	.136	.271	-.021818	.019815	-.060729	.017093
	Equal variances not assumed			-1.083	562.658	.140	.279	-.021818	.020145	-.061386	.017751
rh_cuneus_thickness	Equal variances assumed	.833	.362	1.467	636	.071	.143	.024659	.016808	-.008347	.057664
	Equal variances not assumed			1.461	607.570	.072	.144	.024659	.016874	-.008480	.057797
rh_entorhinal_thickness	Equal variances assumed	12.744	<.001	-2.265	636	.012	.024	-.098251	.043382	-.183439	-.013063
	Equal variances not assumed			-2.219	545.242	.013	.027	-.098251	.044287	-.185245	-.011257
rh_fusiform_thickness	Equal variances assumed	19.268	<.001	-3.455	636	<.001	<.001	-.076892	.022254	-.120592	-.033192
	Equal variances not assumed			-3.388	549.522	<.001	<.001	-.076892	.022696	-.121473	-.032311
rh_inferiorparietal_thickness	Equal variances assumed	10.751	.001	-1.293	636	.098	.196	-.021864	.016903	-.055057	.011329
	Equal variances not assumed			-1.271	559.927	.102	.204	-.021864	.017196	-.055640	.011913
rh_inferiortemporal_thickness	Equal variances assumed	18.048	<.001	-2.462	636	.007	.014	-.061087	.024811	-.109809	-.012365
	Equal variances not assumed			-2.420	560.145	.008	.016	-.061087	.025240	-.110663	-.011511
rh_isthmuscingulate_thickness	Equal variances assumed	6.121	.014	-2.970	636	.002	.003	-.062765	.021134	-.104265	-.021264
	Equal variances not assumed			-2.922	563.482	.002	.004	-.062765	.021481	-.104958	-.020571
rh_lateraloccipital_thickness	Equal variances assumed	4.043	.045	.803	636	.211	.422	.010836	.013488	-.015651	.037322
	Equal variances not assumed			.795	587.182	.213	.427	.010836	.013626	-.015925	.037597
rh_lateralorbitofrontal_thickness	Equal variances assumed	14.512	<.001	-.736	636	.231	.462	-.016461	.022366	-.060380	.027459

	Equal variances not assumed			-.720	541.181	.236	.472	-.016461	.022854	-.061354	.028433
rh_lingual_thickness	Equal variances assumed	1.437	.231	.655	636	.256	.513	.009917	.015137	-.019808	.039642
	Equal variances not assumed			.650	596.508	.258	.516	.009917	.015251	-.020035	.039869
rh_medialorbitofrontal_thickness	Equal variances assumed	16.459	<.001	1.550	636	.061	.122	.029934	.019309	-.007983	.067851
	Equal variances not assumed			1.516	537.362	.065	.130	.029934	.019748	-.008858	.068727
rh_middletemporal_thickness	Equal variances assumed	7.029	.008	-2.933	636	.002	.003	-.080594	.027481	-.134559	-.026629
	Equal variances not assumed			-2.904	588.034	.002	.004	-.080594	.027755	-.135105	-.026083
rh_parahippocampal_thickness	Equal variances assumed	1.854	.174	-4.039	636	<.001	<.001	-.133707	.033104	-.198715	-.068700
	Equal variances not assumed			-4.010	597.284	<.001	<.001	-.133707	.033345	-.199195	-.068220
rh_paracentral_thickness	Equal variances assumed	7.840	.005	-.197	636	.422	.844	-.003936	.020020	-.043249	.035377
	Equal variances not assumed			-.192	527.660	.424	.848	-.003936	.020520	-.044247	.036375
rh_parsopercularis_thickness	Equal variances assumed	15.314	<.001	-1.550	636	.061	.122	-.029079	.018763	-.065923	.007766
	Equal variances not assumed			-1.518	543.948	.065	.130	-.029079	.019160	-.066715	.008558
rh_parsorbitalis_thickness	Equal variances assumed	17.623	<.001	-.506	636	.307	.613	-.013927	.027525	-.067978	.040125
	Equal variances not assumed			-.496	545.154	.310	.620	-.013927	.028100	-.069125	.041272
rh_parstriangularis_thickness	Equal variances assumed	10.361	.001	-.365	636	.358	.716	-.007387	.020259	-.047169	.032396
	Equal variances not assumed			-.357	548.332	.360	.721	-.007387	.020667	-.047982	.033209
rh_pericalcarine_thickness	Equal variances assumed	7.238	.007	2.266	636	.012	.024	.040989	.018085	.005474	.076503
	Equal variances not assumed			2.246	591.273	.013	.025	.040989	.018249	.005148	.076829
rh_postcentral_thickness	Equal variances assumed	5.414	.020	.942	636	.173	.346	.013337	.014151	-.014451	.041125
	Equal variances not assumed			.931	577.733	.176	.352	.013337	.014332	-.014812	.041485
rh_posteriorcingulate_thickness	Equal variances assumed	6.322	.012	-2.071	636	.019	.039	-.039540	.019088	-.077023	-.002057
	Equal variances not assumed			-2.044	576.091	.021	.041	-.039540	.019340	-.077526	-.001554
rh_precentral_thickness	Equal variances assumed	7.860	.005	-1.718	636	.043	.086	-.028245	.016444	-.060537	.004046
	Equal variances not assumed			-1.695	574.593	.045	.091	-.028245	.016668	-.060983	.004492
rh_precuneus_thickness	Equal variances assumed	9.537	.002	-.553	636	.290	.581	-.008582	.015522	-.039063	.021899
	Equal variances not assumed			-.543	559.037	.294	.587	-.008582	.015794	-.039606	.022442
rh_rostralanteriorcingulate_thickness	Equal variances assumed	3.076	.080	-4.447	636	<.001	<.001	-.135009	.030362	-.194631	-.075388
	Equal variances not assumed			-4.377	565.320	<.001	<.001	-.135009	.030847	-.195598	-.074421
rh_rostralmiddlefrontal_thickness	Equal variances assumed	11.332	<.001	1.684	636	.046	.093	.034115	.020253	-.005656	.073886
	Equal variances not assumed			1.659	567.222	.049	.098	.034115	.020567	-.006281	.074512
rh_superiorfrontal_thickness	Equal variances assumed	8.286	.004	-.383	636	.351	.702	-.008312	.021691	-.050907	.034283
	Equal variances not assumed			-.377	560.982	.353	.706	-.008312	.022061	-.051645	.035020
rh_superiorparietal_thickness	Equal variances assumed	7.714	.006	-.078	636	.469	.938	-.001115	.014377	-.029347	.027117

	Equal variances not assumed			-.076	572.751	.470	.939	-.001115	.014580	-.029751	.027521
rh_superiortemporal_thickness	Equal variances assumed	9.805	.002	-2.687	636	.004	.007	-.064409	.023971	-.111480	-.017338
	Equal variances not assumed			-2.643	562.772	.004	.008	-.064409	.024369	-.112274	-.016544
rh_supramarginal_thickness	Equal variances assumed	19.593	<.001	-1.272	636	.102	.204	-.023808	.018710	-.060548	.012932
	Equal variances not assumed			-1.245	540.670	.107	.214	-.023808	.019120	-.061367	.013751
rh_frontalpole_thickness	Equal variances assumed	3.680	.056	2.121	636	.017	.034	.075142	.035433	.005562	.144722
	Equal variances not assumed			2.095	579.011	.018	.037	.075142	.035874	.004683	.145601
rh_temporalpole_thickness	Equal variances assumed	9.088	.003	-2.698	636	.004	.007	-.117571	.043585	-.203159	-.031983
	Equal variances not assumed			-2.669	584.837	.004	.008	-.117571	.044059	-.204103	-.031039
rh_transversetemporal_thickness	Equal variances assumed	3.412	.065	-1.723	636	.043	.085	-.040207	.023334	-.086028	.005613
	Equal variances not assumed			-1.711	597.343	.044	.088	-.040207	.023503	-.086366	.005951
rh_insula_thickness	Equal variances assumed	16.840	<.001	-3.814	636	<.001	<.001	-.081559	.021384	-.123550	-.039567
	Equal variances not assumed			-3.728	536.222	<.001	<.001	-.081559	.021875	-.124530	-.038587
rh_MeanThickness_thickness	Equal variances assumed	18.747	<.001	-1.610	636	.054	.108	-.02162382	.01343384	-.04800386	.00475622
	Equal variances not assumed			-1.569	525.032	.059	.117	-.02162382	.01377755	-.04868971	.00544206
lh_bankssts_thickness	Equal variances assumed	9.103	.003	-2.119	636	.017	.034	-.049904	.023550	-.096150	-.003658
	Equal variances not assumed			-2.076	546.773	.019	.038	-.049904	.024033	-.097113	-.002695
lh_caudalanteriorcingulate_thickness	Equal variances assumed	5.254	.022	-3.485	636	<.001	<.001	-.104823	.030079	-.163889	-.045757
	Equal variances not assumed			-3.414	545.151	<.001	<.001	-.104823	.030707	-.165142	-.044504
lh_caudalmiddlefrontal_thickness	Equal variances assumed	4.950	.026	-.584	636	.280	.559	-.011724	.020077	-.051149	.027701
	Equal variances not assumed			-.577	583.680	.282	.564	-.011724	.020301	-.051597	.028149
lh_cuneus_thickness	Equal variances assumed	.525	.469	2.371	636	.009	.018	.040785	.017198	.007013	.074556
	Equal variances not assumed			2.361	606.528	.009	.019	.040785	.017272	.006864	.074705
lh_entorhinal_thickness	Equal variances assumed	11.287	<.001	-2.447	636	.007	.015	-.115657	.047256	-.208453	-.022861
	Equal variances not assumed			-2.411	568.954	.008	.016	-.115657	.047967	-.209872	-.021442
lh_fusiform_thickness	Equal variances assumed	14.440	<.001	-3.523	636	<.001	<.001	-.072387	.020549	-.112739	-.032035
	Equal variances not assumed			-3.449	543.284	<.001	<.001	-.072387	.020987	-.113613	-.031160
lh_inferiorparietal_thickness	Equal variances assumed	13.338	<.001	-1.433	636	.076	.152	-.023734	.016561	-.056255	.008788
	Equal variances not assumed			-1.404	546.899	.080	.161	-.023734	.016900	-.056932	.009464
lh_inferiortemporal_thickness	Equal variances assumed	22.614	<.001	-2.492	636	.006	.013	-.057749	.023172	-.103252	-.012245
	Equal variances not assumed			-2.433	530.597	.008	.015	-.057749	.023735	-.104375	-.011122
lh_isthmuscingulate_thickness	Equal variances assumed	.736	.391	-.471	636	.319	.638	-.009895	.021013	-.051157	.031368
	Equal variances not assumed			-.469	608.470	.320	.639	-.009895	.021089	-.051311	.031522

lh_lateraloccipital_thickness	Equal variances assumed	1.046	.307	1.207	636	.114	.228	.016567	.013726	-.010388	.043521
	Equal variances not assumed			1.199	599.573	.115	.231	.016567	.013816	-.010567	.043701
lh_lateralorbitofrontal_thickness	Equal variances assumed	12.535	<.001	.338	636	.368	.736	.007420	.021971	-.035724	.050564
	Equal variances not assumed			.330	540.283	.371	.741	.007420	.022455	-.036690	.051530
lh_lingual_thickness	Equal variances assumed	.308	.579	.233	636	.408	.816	.003476	.014952	-.025885	.032838
	Equal variances not assumed			.232	614.825	.408	.816	.003476	.014972	-.025926	.032878
lh_medialorbitofrontal_thickness	Equal variances assumed	9.753	.002	.579	636	.281	.563	.012002	.020720	-.028686	.052690
	Equal variances not assumed			.569	560.555	.285	.569	.012002	.021076	-.029396	.053399
lh_middletemporal_thickness	Equal variances assumed	6.766	.010	-2.362	636	.009	.018	-.062199	.026336	-.113915	-.010484
	Equal variances not assumed			-2.326	567.900	.010	.020	-.062199	.026739	-.114720	-.009679
lh_parahippocampal_thickness	Equal variances assumed	6.381	.012	-5.247	636	<.001	<.001	-.152796	.029122	-.209984	-.095608
	Equal variances not assumed			-5.159	560.994	<.001	<.001	-.152796	.029619	-.210974	-.094618
lh_paracentral_thickness	Equal variances assumed	2.375	.124	-.148	636	.441	.882	-.002690	.018154	-.038339	.032959
	Equal variances not assumed			-.147	600.571	.441	.883	-.002690	.018267	-.038566	.033186
lh_parsopercularis_thickness	Equal variances assumed	9.959	.002	-1.410	636	.079	.159	-.026577	.018847	-.063586	.010433
	Equal variances not assumed			-1.382	548.396	.084	.167	-.026577	.019226	-.064342	.011189
lh_parsorbitalis_thickness	Equal variances assumed	14.005	<.001	.729	636	.233	.467	.019906	.027321	-.033744	.073556
	Equal variances not assumed			.717	564.646	.237	.474	.019906	.027762	-.034623	.074436
lh_parstriangularis_thickness	Equal variances assumed	14.689	<.001	.014	636	.494	.989	.000299	.020999	-.040936	.041534
	Equal variances not assumed			.014	545.157	.494	.989	.000299	.021437	-.041811	.042408
lh_pericalcarine_thickness	Equal variances assumed	1.649	.200	2.121	636	.017	.034	.037740	.017796	.002794	.072686
	Equal variances not assumed			2.102	592.427	.018	.036	.037740	.017951	.002485	.072996
lh_postcentral_thickness	Equal variances assumed	.000	.989	1.514	636	.065	.130	.021443	.014162	-.006367	.049252
	Equal variances not assumed			1.516	620.441	.065	.130	.021443	.014148	-.006340	.049226
lh_posteriorcingulate_thickness	Equal variances assumed	3.242	.072	-2.118	636	.017	.035	-.042319	.019979	-.081551	-.003087
	Equal variances not assumed			-2.092	578.914	.018	.037	-.042319	.020228	-.082048	-.002591
lh_precentral_thickness	Equal variances assumed	4.895	.027	-1.447	636	.074	.149	-.024378	.016852	-.057470	.008714
	Equal variances not assumed			-1.432	588.241	.076	.153	-.024378	.017019	-.057803	.009048
lh_precuneus_thickness	Equal variances assumed	1.580	.209	.623	636	.267	.534	.010216	.016403	-.021995	.042427
	Equal variances not assumed			.618	597.343	.268	.537	.010216	.016522	-.022232	.042665
lh_rostralanteriorcingulate_thickness	Equal variances assumed	7.104	.008	-3.060	636	.001	.002	-.091771	.029992	-.150667	-.032875
	Equal variances not assumed			-3.007	558.926	.001	.003	-.091771	.030519	-.151717	-.031825
lh_rostralmiddlefrontal_thickness	Equal variances assumed	11.368	<.001	2.179	636	.015	.030	.041953	.019257	.004138	.079768
	Equal variances not assumed			2.145	566.215	.016	.032	.041953	.019561	.003533	.080373

lh_superiorfrontal_thickness	Equal variances assumed	15.789	<.001	-.546	636	.293	.586	-.011184	.020500	-.051440	.029072
	Equal variances not assumed			-.534	540.981	.297	.594	-.011184	.020949	-.052335	.029966
lh_superiorparietal_thickness	Equal variances assumed	4.133	.042	1.450	636	.074	.148	.020886	.014403	-.007398	.049170
	Equal variances not assumed			1.433	581.783	.076	.152	.020886	.014572	-.007734	.049506
lh_superiortemporal_thickness	Equal variances assumed	11.079	<.001	-1.637	636	.051	.102	-.039402	.024073	-.086674	.007869
	Equal variances not assumed			-1.606	550.973	.054	.109	-.039402	.024542	-.087610	.008805
lh_supramarginal_thickness	Equal variances assumed	12.890	<.001	-1.069	636	.143	.286	-.020004	.018719	-.056762	.016754
	Equal variances not assumed			-1.048	550.310	.148	.295	-.020004	.019087	-.057496	.017488
lh_frontalpole_thickness	Equal variances assumed	1.163	.281	1.237	636	.108	.217	.043244	.034967	-.025421	.111910
	Equal variances not assumed			1.232	608.333	.109	.218	.043244	.035096	-.025680	.112169
lh_temporalpole_thickness	Equal variances assumed	.613	.434	-1.732	636	.042	.084	-.081336	.046958	-.173547	.010876
	Equal variances not assumed			-1.724	606.035	.043	.085	-.081336	.047168	-.173968	.011297
lh_transversetemporal_thickness	Equal variances assumed	2.484	.116	-1.932	636	.027	.054	-.046609	.024125	-.093982	.000764
	Equal variances not assumed			-1.918	596.472	.028	.056	-.046609	.024306	-.094344	.001126
lh_insula_thickness	Equal variances assumed	22.529	<.001	-3.546	636	<.001	<.001	-.076459	.021563	-.118802	-.034115
	Equal variances not assumed			-3.451	517.096	<.001	<.001	-.076459	.022154	-.119982	-.032935
lh_MeanThickness_thickness	Equal variances assumed	17.319	<.001	-.930	636	.176	.353	-.01247102	.01340423	-.03879292	.01385087
	Equal variances not assumed			-.909	535.418	.182	.364	-.01247102	.01371493	-.03941269	.01447064
lh_bankssts_volume	Equal variances assumed	6.070	.014	-1.909	636	.028	.057	-101.450	53.149	-205.819	2.920
	Equal variances not assumed			-1.886	580.813	.030	.060	-101.450	53.785	-207.086	4.187
lh_caudalanteriorcingulate_volume	Equal variances assumed	5.227	.023	-3.032	636	.001	.003	-151.407	49.933	-249.461	-53.354
	Equal variances not assumed			-2.983	563.906	.001	.003	-151.407	50.749	-251.087	-51.728
lh_caudalmiddlefrontal_volume	Equal variances assumed	14.499	<.001	-1.030	636	.152	.304	-133.658	129.801	-388.548	121.232
	Equal variances not assumed			-1.008	543.731	.157	.314	-133.658	132.556	-394.043	126.727
lh_cuneus_volume	Equal variances assumed	3.587	.059	.523	636	.301	.601	31.198	59.687	-86.009	148.405
	Equal variances not assumed			.517	582.858	.303	.605	31.198	60.368	-87.367	149.763
lh_entorhinal_volume	Equal variances assumed	1.833	.176	-2.859	636	.002	.004	-120.292	42.075	-202.914	-37.670
	Equal variances not assumed			-2.858	617.396	.002	.004	-120.292	42.087	-202.943	-37.641
lh_fusiform_volume	Equal variances assumed	6.744	.010	-2.596	636	.005	.010	-490.688	189.002	-861.831	-119.544
	Equal variances not assumed			-2.566	581.522	.005	.011	-490.688	191.226	-866.265	-115.110
lh_inferiorparietal_volume	Equal variances assumed	3.797	.052	-2.000	636	.023	.046	-565.998	282.949	-1121.625	-10.372
	Equal variances not assumed			-1.982	591.138	.024	.048	-565.998	285.519	-1126.753	-5.244
lh_inferiortemporal_volume	Equal variances assumed	10.137	.002	-2.350	636	.010	.019	-523.190	222.664	-960.436	-85.944

	Equal variances not assumed			-2.310	560.578	.011	.021	-523.190	226.485	-968.053	-78.327
lh_isthmuscingulate_volume	Equal variances assumed	2.455	.118	.167	636	.434	.868	9.018	54.146	-97.310	115.345
	Equal variances not assumed			.165	586.646	.435	.869	9.018	54.707	-98.428	116.464
lh_lateraloccipital_volume	Equal variances assumed	6.505	.011	.706	636	.240	.480	121.257	171.698	-215.906	458.420
	Equal variances not assumed			.696	571.279	.243	.487	121.257	174.182	-220.857	463.372
lh_lateralorbitofrontal_volume	Equal variances assumed	22.637	<.001	-3.524	636	<.001	<.001	-460.532	130.682	-717.153	-203.911
	Equal variances not assumed			-3.428	513.931	<.001	<.001	-460.532	134.358	-724.491	-196.573
lh_lingual_volume	Equal variances assumed	3.786	.052	-2.855	636	.002	.004	-362.519	126.994	-611.897	-113.141
	Equal variances not assumed			-2.817	575.852	.003	.005	-362.519	128.680	-615.259	-109.779
lh_medialorbitofrontal_volume	Equal variances assumed	7.841	.005	-2.814	636	.003	.005	-239.462	85.109	-406.591	-72.334
	Equal variances not assumed			-2.761	552.624	.003	.006	-239.462	86.735	-409.832	-69.092
lh_middletemporal_volume	Equal variances assumed	4.653	.031	-2.604	636	.005	.009	-629.539	241.756	-1104.276	-154.803
	Equal variances not assumed			-2.578	587.361	.005	.010	-629.539	244.212	-1109.174	-149.905
lh_parahippocampal_volume	Equal variances assumed	1.022	.312	-2.830	636	.002	.005	-119.844	42.351	-203.010	-36.679
	Equal variances not assumed			-2.799	585.020	.003	.005	-119.844	42.809	-203.923	-35.766
lh_paracentral_volume	Equal variances assumed	14.506	<.001	1.238	636	.108	.216	82.514	66.633	-48.333	213.361
	Equal variances not assumed			1.211	537.182	.113	.227	82.514	68.150	-51.359	216.387
lh_parsopercularis_volume	Equal variances assumed	7.985	.005	-.780	636	.218	.435	-68.464	87.725	-240.731	103.802
	Equal variances not assumed			-.768	566.697	.221	.443	-68.464	89.097	-243.465	106.536
lh_parsorbitalis_volume	Equal variances assumed	7.228	.007	-1.592	636	.056	.112	-86.496	54.338	-193.200	20.209
	Equal variances not assumed			-1.569	571.035	.059	.117	-86.496	55.128	-194.774	21.782
lh_parstriangularis_volume	Equal variances assumed	3.115	.078	-1.480	636	.070	.139	-138.115	93.293	-321.315	45.084
	Equal variances not assumed			-1.470	597.456	.071	.142	-138.115	93.966	-322.659	46.428
lh_pericalcarine_volume	Equal variances assumed	.350	.554	-2.069	636	.019	.039	-92.671	44.795	-180.635	-4.706
	Equal variances not assumed			-2.058	604.103	.020	.040	-92.671	45.024	-181.094	-4.248
lh_postcentral_volume	Equal variances assumed	1.462	.227	-.028	636	.489	.978	-4.138	147.512	-293.807	285.530
	Equal variances not assumed			-.028	591.409	.489	.978	-4.138	148.840	-296.458	288.181
lh_posteriorcingulate_volume	Equal variances assumed	3.968	.047	-2.765	636	.003	.006	-167.413	60.542	-286.299	-48.527
	Equal variances not assumed			-2.731	578.136	.003	.007	-167.413	61.309	-287.828	-46.997
lh_precentral_volume	Equal variances assumed	8.488	.004	-.861	636	.195	.389	-162.501	188.684	-533.020	208.017
	Equal variances not assumed			-.846	558.686	.199	.398	-162.501	192.010	-539.650	214.647
lh_precuneus_volume	Equal variances assumed	6.742	.010	.441	636	.330	.659	73.407	166.269	-253.095	399.909
	Equal variances not assumed			.434	561.326	.332	.664	73.407	169.091	-258.722	405.536
lh_rostralanteriorcingulate_volume	Equal variances assumed	4.712	.030	-4.210	636	<.001	<.001	-243.347	57.797	-356.844	-129.851



	Equal variances not assumed			-4.166	585.951	<.001	<.001	-243.347	58.407	-358.060	-128.634
lh_rostralmiddlefrontal_volume	Equal variances assumed	11.858	<.001	-.415	636	.339	.678	-128.019	308.118	-733.071	477.033
	Equal variances not assumed			-.407	545.872	.342	.684	-128.019	314.502	-745.801	489.764
lh_superiorfrontal_volume	Equal variances assumed	12.394	<.001	-1.042	636	.149	.298	-348.745	334.813	-1006.218	308.728
	Equal variances not assumed			-1.013	514.579	.156	.311	-348.745	344.182	-1024.919	327.430
lh_superiorparietal_volume	Equal variances assumed	13.610	<.001	-.254	636	.400	.800	-50.109	197.328	-437.602	337.384
	Equal variances not assumed			-.249	545.267	.402	.804	-50.109	201.445	-445.811	345.594
lh_superiortemporal_volume	Equal variances assumed	8.415	.004	-.348	636	.364	.728	-76.927	220.822	-510.555	356.701
	Equal variances not assumed			-.343	565.612	.366	.732	-76.927	224.334	-517.558	363.703
lh_supramarginal_volume	Equal variances assumed	4.247	.040	-.064	636	.475	.949	-12.270	192.558	-390.397	365.857
	Equal variances not assumed			-.063	575.619	.475	.950	-12.270	195.127	-395.518	370.978
lh_frontalpole_volume	Equal variances assumed	16.953	<.001	1.651	636	.050	.099	43.725	26.481	-8.276	95.727
	Equal variances not assumed			1.621	553.960	.053	.106	43.725	26.979	-9.268	96.718
lh_temporalpole_volume	Equal variances assumed	1.631	.202	-1.689	636	.046	.092	-87.975	52.076	-190.237	14.287
	Equal variances not assumed			-1.682	606.321	.047	.093	-87.975	52.304	-190.694	14.744
lh_transversetemporal_volume	Equal variances assumed	2.621	.106	.474	636	.318	.636	11.959	25.241	-37.606	61.525
	Equal variances not assumed			.467	571.469	.320	.641	11.959	25.605	-38.332	62.250
lh_insula_volume	Equal variances assumed	8.117	.005	-2.710	636	.003	.007	-267.823	98.816	-461.868	-73.778
	Equal variances not assumed			-2.671	570.295	.004	.008	-267.823	100.270	-464.768	-70.879
rh_bankssts_volume	Equal variances assumed	5.851	.016	-1.677	636	.047	.094	-97.387	58.064	-211.407	16.634
	Equal variances not assumed			-1.653	569.432	.049	.099	-97.387	58.931	-213.136	18.363
rh_caudalanteriorcingulate_volume	Equal variances assumed	4.901	.027	-2.957	636	.002	.003	-142.490	48.183	-237.108	-47.872
	Equal variances not assumed			-2.927	587.328	.002	.004	-142.490	48.673	-238.085	-46.895
rh_caudalmiddlefrontal_volume	Equal variances assumed	6.330	.012	-1.722	636	.043	.086	-219.702	127.604	-470.278	30.874
	Equal variances not assumed			-1.696	569.282	.045	.090	-219.702	129.515	-474.089	34.685
rh_cuneus_volume	Equal variances assumed	.422	.516	.155	636	.438	.876	8.940	57.503	-103.978	121.859
	Equal variances not assumed			.155	606.080	.439	.877	8.940	57.759	-104.492	122.373
rh_entorhinal_volume	Equal variances assumed	.121	.728	-2.961	636	.002	.003	-136.426	46.080	-226.914	-45.939
	Equal variances not assumed			-2.993	634.906	.001	.003	-136.426	45.584	-225.940	-46.913
rh_fusiform_volume	Equal variances assumed	11.442	<.001	-3.347	636	<.001	<.001	-651.278	194.571	-1033.358	-269.199
	Equal variances not assumed			-3.301	573.397	<.001	.001	-651.278	197.279	-1038.757	-263.800
rh_inferiorparietal_volume	Equal variances assumed	4.541	.033	-.617	636	.269	.537	-162.253	262.981	-678.668	354.163
	Equal variances not assumed			-.609	578.622	.271	.543	-162.253	266.280	-685.246	360.741
rh_inferiortemporal_volume	Equal variances assumed	7.499	.006	-2.287	636	.011	.023	-519.809	227.334	-966.225	-73.393



	Equal variances not assumed			-2.262	584.362	.012	.024	-519.809	229.833	-971.208	-68.410
rh_isthmuscingulate_volume	Equal variances assumed	.372	.542	-.459	636	.323	.646	-24.831	54.078	-131.025	81.363
	Equal variances not assumed			-.458	609.280	.324	.647	-24.831	54.260	-131.390	81.728
rh_lateraloccipital_volume	Equal variances assumed	2.280	.132	.963	636	.168	.336	161.962	168.216	-168.364	492.288
	Equal variances not assumed			.956	596.442	.170	.340	161.962	169.481	-170.889	494.813
rh_lateralorbitofrontal_volume	Equal variances assumed	15.841	<.001	-3.503	636	<.001	<.001	-452.642	129.202	-706.355	-198.928
	Equal variances not assumed			-3.431	543.909	<.001	<.001	-452.642	131.939	-711.814	-193.470
rh_lingual_volume	Equal variances assumed	1.234	.267	-1.531	636	.063	.126	-193.945	126.675	-442.697	54.807
	Equal variances not assumed			-1.518	592.337	.065	.130	-193.945	127.782	-444.905	57.015
rh_medialorbitofrontal_volume	Equal variances assumed	5.943	.015	-1.534	636	.063	.126	-121.066	78.936	-276.072	33.941
	Equal variances not assumed			-1.506	555.839	.066	.133	-121.066	80.382	-278.956	36.825
rh_middletemporal_volume	Equal variances assumed	7.771	.005	-3.219	636	<.001	.001	-739.709	229.819	-1191.005	-288.413
	Equal variances not assumed			-3.181	581.292	<.001	.002	-739.709	232.538	-1196.426	-282.992
rh_parahippocampal_volume	Equal variances assumed	.006	.940	-3.756	636	<.001	<.001	-166.870	44.422	-254.101	-79.639
	Equal variances not assumed			-3.775	628.213	<.001	<.001	-166.870	44.201	-253.669	-80.070
rh_paracentral_volume	Equal variances assumed	9.057	.003	1.569	636	.059	.117	103.750	66.119	-26.088	233.587
	Equal variances not assumed			1.543	560.635	.062	.123	103.750	67.253	-28.348	235.848
rh_parsopercularis_volume	Equal variances assumed	5.158	.023	-2.142	636	.016	.033	-224.697	104.888	-430.666	-18.729
	Equal variances not assumed			-2.120	586.984	.017	.034	-224.697	105.965	-432.813	-16.581
rh_parsorbitalis_volume	Equal variances assumed	2.721	.100	-1.157	636	.124	.248	-59.569	51.500	-160.699	41.561
	Equal variances not assumed			-1.146	589.606	.126	.252	-59.569	51.990	-161.677	42.540
rh_parstriangularis_volume	Equal variances assumed	4.865	.028	-1.541	636	.062	.124	-132.353	85.882	-301.000	36.294
	Equal variances not assumed			-1.521	576.232	.064	.129	-132.353	87.014	-303.256	38.551
rh_pericalcarine_volume	Equal variances assumed	.537	.464	-1.733	636	.042	.084	-74.730	43.120	-159.406	9.945
	Equal variances not assumed			-1.725	604.933	.043	.085	-74.730	43.329	-159.824	10.363
rh_postcentral_volume	Equal variances assumed	9.648	.002	.608	636	.272	.544	98.130	161.441	-218.891	415.152
	Equal variances not assumed			.599	566.852	.275	.550	98.130	163.959	-223.910	420.171
rh_posteriorcingulate_volume	Equal variances assumed	6.779	.009	.018	636	.493	.986	1.074	60.955	-118.624	120.772
	Equal variances not assumed			.017	555.754	.493	.986	1.074	62.073	-120.853	123.002
rh_precentral_volume	Equal variances assumed	8.261	.004	-.460	636	.323	.646	-81.342	176.936	-428.791	266.107
	Equal variances not assumed			-.451	553.320	.326	.652	-81.342	180.286	-435.470	272.787
rh_precuneus_volume	Equal variances assumed	10.571	.001	-.576	636	.282	.565	-93.751	162.771	-413.384	225.883
	Equal variances not assumed			-.565	548.880	.286	.573	-93.751	166.027	-419.876	232.375
rh_rostralanteriorcingulate_volume	Equal variances assumed	6.255	.013	-4.518	636	<.001	<.001	-277.848	61.500	-398.615	-157.082

	Equal variances not assumed			-4.442	561.179	<.001	<.001	-277.848	62.546	-400.701	-154.996
rh_rostralmiddlefrontal_volume	Equal variances assumed	16.379	<.001	-.706	636	.240	.480	-210.117	297.554	-794.424	374.190
	Equal variances not assumed			-.690	535.589	.245	.490	-210.117	304.439	-808.158	387.924
rh_superiorfrontal_volume	Equal variances assumed	16.426	<.001	-1.233	636	.109	.218	-409.182	331.942	-1061.017	242.653
	Equal variances not assumed			-1.197	508.247	.116	.232	-409.182	341.710	-1080.520	262.156
rh_superiorparietal_volume	Equal variances assumed	6.138	.013	-.429	636	.334	.668	-88.136	205.286	-491.257	314.984
	Equal variances not assumed			-.422	558.854	.337	.673	-88.136	208.896	-498.454	322.181
rh_superiortemporal_volume	Equal variances assumed	6.907	.009	-1.862	636	.032	.063	-423.036	227.192	-869.174	23.101
	Equal variances not assumed			-1.839	578.952	.033	.066	-423.036	230.023	-874.817	28.744
rh_supramarginal_volume	Equal variances assumed	2.062	.151	-1.734	636	.042	.083	-360.417	207.879	-768.629	47.794
	Equal variances not assumed			-1.722	599.586	.043	.085	-360.417	209.241	-771.351	50.517
rh_frontalpole_volume	Equal variances assumed	.610	.435	2.394	636	.008	.017	61.317	25.614	11.018	111.616
	Equal variances not assumed			2.375	595.512	.009	.018	61.317	25.814	10.619	112.015
rh_temporalpole_volume	Equal variances assumed	10.952	<.001	-2.076	636	.019	.038	-111.283	53.610	-216.557	-6.010
	Equal variances not assumed			-2.051	580.312	.020	.041	-111.283	54.258	-217.849	-4.717
rh_transversetemporal_volume	Equal variances assumed	1.019	.313	-.751	636	.227	.453	-22.055	29.377	-79.742	35.633
	Equal variances not assumed			-.748	606.672	.228	.455	-22.055	29.502	-79.993	35.884
rh_insula_volume	Equal variances assumed	4.325	.038	-2.507	636	.006	.012	-238.162	95.017	-424.748	-51.577
	Equal variances not assumed			-2.493	603.000	.006	.013	-238.162	95.537	-425.789	-50.536
LeftLateralVentricle	Equal variances assumed	6.044	.014	2.167	636	.015	.031	511.8264	236.1877	48.0244	975.6283
	Equal variances not assumed			2.134	567.079	.017	.033	511.8264	239.8574	40.7089	982.9438
LeftInfLatVent	Equal variances assumed	1.496	.222	1.302	636	.097	.193	24.4021	18.7464	-12.4103	61.2145
	Equal variances not assumed			1.312	632.145	.095	.190	24.4021	18.6013	-12.1257	60.9300
LeftCerebellumWhiteMatter	Equal variances assumed	6.024	.014	-.941	636	.174	.347	-158.8470	168.8000	-490.3197	172.6256
	Equal variances not assumed			-.926	563.785	.177	.355	-158.8470	171.5624	-495.8265	178.1324
LeftCerebellumCortex	Equal variances assumed	3.225	.073	-1.242	636	.107	.215	-643.4415	518.2292	-1661.0886	374.2057
	Equal variances not assumed			-1.226	578.994	.110	.221	-643.4415	524.6797	-1673.9489	387.0660
LeftThalamusProper	Equal variances assumed	1.118	.291	-.344	636	.365	.731	-21.5427	62.6313	-144.5319	101.4465
	Equal variances not assumed			-.343	606.884	.366	.732	-21.5427	62.8934	-145.0578	101.9724
LeftCaudate	Equal variances assumed	.707	.401	.109	636	.457	.913	4.8236	44.2511	-82.0723	91.7194
	Equal variances not assumed			.108	587.400	.457	.914	4.8236	44.7001	-82.9679	92.6150
LeftPutamen	Equal variances assumed	1.614	.204	.965	636	.167	.335	67.5705	70.0111	-69.9105	205.0514
	Equal variances not assumed			.960	603.649	.169	.337	67.5705	70.3794	-70.6477	205.7887

LeftPallidum	Equal variances assumed	1.616	.204	-.308	636	.379	.758	-7.1411	23.2160	-52.7304	38.4482
	Equal variances not assumed			-.306	598.747	.380	.760	-7.1411	23.3742	-53.0465	38.7642
@3rdVentricle	Equal variances assumed	9.262	.002	4.683	636	<.001	<.001	91.8116	19.6032	53.3167	130.3064
	Equal variances not assumed			4.570	528.323	<.001	<.001	91.8116	20.0899	52.3457	131.2774
@4thVentricle	Equal variances assumed	5.297	.022	1.081	636	.140	.280	52.5796	48.6501	-42.9546	148.1139
	Equal variances not assumed			1.065	568.507	.144	.288	52.5796	49.3884	-44.4264	149.5857
BrainStem	Equal variances assumed	3.461	.063	-2.966	636	.002	.003	-528.1842	178.0932	-877.9061	-178.4624
	Equal variances not assumed			-2.942	593.983	.002	.003	-528.1842	179.5628	-880.8395	-175.5290
LeftHippocampus	Equal variances assumed	.824	.364	-.360	636	.360	.719	-16.2912	45.3060	-105.2586	72.6761
	Equal variances not assumed			-.357	598.366	.361	.721	-16.2912	45.6200	-105.8859	73.3035
LeftAmygdala	Equal variances assumed	3.305	.070	-1.427	636	.077	.154	-31.0560	21.7675	-73.8008	11.6888
	Equal variances not assumed			-1.406	570.394	.080	.160	-31.0560	22.0873	-74.4384	12.3265
CSF	Equal variances assumed	1.354	.245	1.340	636	.090	.181	27.1960	20.2969	-12.6610	67.0531
	Equal variances not assumed			1.331	598.303	.092	.184	27.1960	20.4380	-12.9428	67.3349
LeftAccumbensarea	Equal variances assumed	.003	.960	.798	636	.213	.425	9.7196	12.1838	-14.2057	33.6449
	Equal variances not assumed			.794	605.423	.214	.427	9.7196	12.2407	-14.3198	33.7591
LeftVentralDC	Equal variances assumed	.304	.582	.190	636	.425	.849	6.7769	35.6266	-63.1831	76.7370
	Equal variances not assumed			.191	623.525	.424	.849	6.7769	35.5399	-63.0155	76.5694
Leftvessel	Equal variances assumed	.033	.857	-1.311	636	.095	.190	-4.1903	3.1971	-10.4685	2.0880
	Equal variances not assumed			-1.320	631.462	.094	.187	-4.1903	3.1742	-10.4235	2.0429
Leftchoroidplexus	Equal variances assumed	3.051	.081	1.315	636	.095	.189	26.6874	20.3013	-13.1783	66.5532
	Equal variances not assumed			1.301	586.177	.097	.194	26.6874	20.5143	-13.6030	66.9779
RightLateralVentricle	Equal variances assumed	5.890	.016	2.591	636	.005	.010	607.1984	234.3754	146.9553	1067.4416
	Equal variances not assumed			2.549	563.256	.006	.011	607.1984	238.2418	139.2475	1075.1494
RightInfLatVent	Equal variances assumed	3.559	.060	1.859	636	.032	.064	28.1505	15.1435	-1.5869	57.8879
	Equal variances not assumed			1.840	586.467	.033	.066	28.1505	15.3012	-1.9012	58.2023
RightCerebellumWhiteMatter	Equal variances assumed	5.149	.024	-1.781	636	.038	.075	-299.0484	167.8962	-628.7464	30.6496
	Equal variances not assumed			-1.755	569.865	.040	.080	-299.0484	170.3861	-633.7098	35.6130
RightCerebellumCortex	Equal variances assumed	1.242	.265	-.786	636	.216	.432	-452.2748	575.5339	-1582.4513	677.9017
	Equal variances not assumed			-.780	596.530	.218	.436	-452.2748	579.8450	-1591.0606	686.5110
RightThalamusProper	Equal variances assumed	.743	.389	-.963	636	.168	.336	-58.1347	60.3476	-176.6393	60.3699
	Equal variances not assumed			-.960	610.216	.169	.337	-58.1347	60.5302	-177.0074	60.7380
RightCaudate	Equal variances assumed	2.197	.139	.020	636	.492	.984	.9850	48.1012	-93.4714	95.4415

	Equal variances not assumed			.020	584.671	.492	.984	.9850	48.6259	-94.5177	96.4877
RightPutamen	Equal variances assumed	5.079	.025	1.446	636	.074	.149	97.9052	67.6968	-35.0311	230.8415
	Equal variances not assumed			1.424	565.877	.078	.155	97.9052	68.7692	-37.1689	232.9792
RightPallidum	Equal variances assumed	.748	.387	-.550	636	.291	.582	-11.8117	21.4575	-53.9479	30.3244
	Equal variances not assumed			-.547	602.293	.292	.584	-11.8117	21.5798	-54.1925	30.5691
RightHippocampus	Equal variances assumed	2.178	.140	-.102	636	.459	.919	-4.1399	40.5145	-83.6982	75.4185
	Equal variances not assumed			-.101	576.376	.460	.920	-4.1399	41.0469	-84.7596	76.4798
RightAmygdala	Equal variances assumed	1.529	.217	-1.504	636	.067	.133	-33.6388	22.3728	-77.5724	10.2947
	Equal variances not assumed			-1.490	592.125	.068	.137	-33.6388	22.5696	-77.9651	10.6875
RightAccumbensarea	Equal variances assumed	3.289	.070	1.041	636	.149	.298	10.7373	10.3158	-9.5199	30.9945
	Equal variances not assumed			1.024	563.907	.153	.306	10.7373	10.4843	-9.8558	31.3304
RightVentralDC	Equal variances assumed	.816	.367	-.496	636	.310	.620	-16.8318	33.9362	-83.4724	49.8087
	Equal variances not assumed			-.497	623.172	.310	.619	-16.8318	33.8594	-83.3242	49.6605
Rightvessel	Equal variances assumed	3.667	.056	-3.075	636	.001	.002	-10.7041	3.4814	-17.5405	-3.8676
	Equal variances not assumed			-3.106	634.472	<.001	.002	-10.7041	3.4461	-17.4712	-3.9369
Rightchoroidplexus	Equal variances assumed	.137	.712	2.730	636	.003	.007	68.1910	24.9747	19.1481	117.2339
	Equal variances not assumed			2.731	618.956	.003	.006	68.1910	24.9658	19.1631	117.2189
@5thVentricle	Equal variances assumed	.377	.540	-.178	636	.429	.859	-.0524	.2947	-.6311	.5262
	Equal variances not assumed			-.179	625.427	.429	.858	-.0524	.2937	-.6291	.5243
WMhypointensities	Equal variances assumed	21.376	<.001	4.623	636	<.001	<.001	464.3102	100.4295	267.0966	661.5237
	Equal variances not assumed			4.464	480.714	<.001	<.001	464.3102	104.0151	259.9298	668.6905
nonWMhypointensities	Equal variances assumed	1.984	.159	1.385	636	.083	.167	1.9123	1.3811	-.7998	4.6244
	Equal variances not assumed			1.368	581.002	.086	.172	1.9123	1.3975	-.8325	4.6572
OpticChiasm	Equal variances assumed	.948	.331	.788	636	.215	.431	3.8982	4.9439	-5.8101	13.6066
	Equal variances not assumed			.791	625.535	.215	.429	3.8982	4.9268	-5.7769	13.5733
CC_Posterior	Equal variances assumed	.173	.678	-2.653	636	.004	.008	-28.0739	10.5820	-48.8537	-7.2941
	Equal variances not assumed			-2.646	611.756	.004	.008	-28.0739	10.6081	-48.9066	-7.2412
CC_Mid_Posterior	Equal variances assumed	.515	.473	-.079	636	.468	.937	-.5026	6.3383	-12.9492	11.9439
	Equal variances not assumed			-.079	607.768	.469	.937	-.5026	6.3629	-12.9986	11.9934
CC_Central	Equal variances assumed	.000	.991	-.405	636	.343	.685	-2.9795	7.3528	-17.4182	11.4592
	Equal variances not assumed			-.404	609.246	.343	.686	-2.9795	7.3776	-17.4681	11.5091
CC_Mid_Anterior	Equal variances assumed	17.066	<.001	2.466	636	.007	.014	27.1604	11.0143	5.5316	48.7892
	Equal variances not assumed			2.421	555.214	.008	.016	27.1604	11.2178	5.1259	49.1949
CC_Anterior	Equal variances assumed	2.523	.113	.556	636	.289	.579	7.1559	12.8811	-18.1389	32.4506

	Equal variances not assumed			.549	582.384	.292	.583	7.1559	13.0297	-18.4351	32.7468
BrainSegVol	Equal variances assumed	8.517	.004	-1.790	636	.037	.074	-19811.586	11066.590	-41543.060	1919.887
	Equal variances not assumed			-1.759	557.994	.040	.079	-19811.586	11263.544	-41935.715	2312.542
BrainSegVolNotVent	Equal variances assumed	8.996	.003	-1.933	636	.027	.054	-21226.127	10982.884	-42793.227	340.973
	Equal variances not assumed			-1.898	555.787	.029	.058	-21226.127	11184.267	-43194.729	742.475
BrainSegVolNotVentSurf	Equal variances assumed	9.065	.003	-1.950	636	.026	.052	-21442.7592603	10996.5786171	-43036.7512311	151.2327104
	Equal variances not assumed			-1.915	555.776	.028	.056	-21442.7592603	11198.2429916	-43438.8132645	553.2947438
lhCortexVol	Equal variances assumed	17.161	<.001	-2.121	636	.017	.034	-6777.5509504	3196.0551662	-13053.6475437	-501.4543572
	Equal variances not assumed			-2.073	536.336	.019	.039	-6777.5509504	3269.4528018	-13200.0539741	-355.0479268
rhCortexVol	Equal variances assumed	17.738	<.001	-1.887	636	.030	.060	-6152.8008104	3260.0748556	-12554.6129292	249.0113084
	Equal variances not assumed			-1.843	531.225	.033	.066	-6152.8008104	3338.8197234	-12711.7107131	406.1090923
CortexVol	Equal variances assumed	16.790	<.001	-2.011	636	.022	.045	-12930.3517548	6429.0631223	-25555.1091703	-305.5943393
	Equal variances not assumed			-1.965	533.846	.025	.050	-12930.3517548	6580.4390664	-25857.0823766	-3.6211330
lhCorticalWhiteMatterVol	Equal variances assumed	2.081	.150	-1.736	636	.042	.083	-3665.6242414	2111.6508265	-7812.2749935	481.0265107
	Equal variances not assumed			-1.720	590.775	.043	.086	-3665.6242414	2131.0516381	-7850.9832549	519.7347721
rhCorticalWhiteMatterVol	Equal variances assumed	2.236	.135	-1.539	636	.062	.124	-3360.96896174	2183.22332070	-7648.16668924	926.22876576
	Equal variances not assumed			-1.521	580.879	.064	.129	-3360.96896174	2209.29387985	-7700.14651371	978.20859024
CorticalWhiteMatterVol	Equal variances assumed	2.185	.140	-1.642	636	.051	.101	-7026.5931966	4280.0562305	-15431.3437188	1378.1573256
	Equal variances not assumed			-1.625	586.555	.052	.105	-7026.5931966	4324.5000303	-15519.9831015	1466.7967082
SubCortGrayVol	Equal variances assumed	1.639	.201	-.040	636	.484	.968	-17.983	445.397	-892.608	856.643
	Equal variances not assumed			-.040	598.805	.484	.968	-17.983	448.423	-898.656	862.691
TotalGrayVol	Equal variances assumed	14.793	<.001	-1.947	636	.026	.052	-14002.7836773	7193.4140765	-28128.4977943	122.9304396
	Equal variances not assumed			-1.906	542.329	.029	.057	-14002.7836773	7348.4925349	-28437.7790247	432.2116700
SupraTentorialVol	Equal variances assumed	8.978	.003	-1.767	636	.039	.078	-18519.1207528	10480.5353749	-39099.7581143	2061.5166086

	Equal variances not assumed			-1.735	555.245	.042	.083	-18519.1207528	10674.0889835	-39485.6534114	2447.4119057
SupraTentorialVolNotVent	Equal variances assumed	9.183	.003	-1.901	636	.029	.058	-19767.6752665	10400.9730077	-40192.0759312	656.7253981
	Equal variances not assumed			-1.865	553.080	.031	.063	-19767.6752665	10598.5150956	-40585.9402627	1050.5897296
SupraTentorialVolNotVentVox	Equal variances assumed	9.149	.003	-1.905	636	.029	.057	-19781.505	10385.682	-40175.878	612.868
	Equal variances not assumed			-1.869	552.812	.031	.062	-19781.505	10583.607	-40570.508	1007.498
MaskVol	Equal variances assumed	.550	.459	1.158	636	.124	.247	12420.657	10721.727	-8633.608	33474.922
	Equal variances not assumed			1.151	599.542	.125	.250	12420.657	10792.138	-8774.332	33615.646
BrainSegVoltoeTIV	Equal variances assumed	11.178	<.001	-3.395	636	<.001	<.001	-.019438466	.005725387	-.030681413	-.00819519
	Equal variances not assumed			-3.351	576.724	<.001	<.001	-.019438466	.005800100	-.030830359	-.008046572
MaskVoltoeTIV	Equal variances assumed	.419	.518	.185	636	.427	.853	.000934649	.005059142	-.008999993	.010869291
	Equal variances not assumed			.190	621.216	.425	.850	.000934649	.004925032	-.008737081	.010606378
lhSurfaceHoles	Equal variances assumed	20.907	<.001	5.882	636	<.001	<.001	31.555	5.365	21.020	42.089
	Equal variances not assumed			5.649	456.447	<.001	<.001	31.555	5.586	20.577	42.533
rhSurfaceHoles	Equal variances assumed	23.271	<.001	6.036	636	<.001	<.001	31.136	5.159	21.007	41.266
	Equal variances not assumed			5.790	451.813	<.001	<.001	31.136	5.377	20.569	41.704
SurfaceHoles	Equal variances assumed	22.445	<.001	6.024	636	<.001	<.001	62.691	10.406	42.256	83.126
	Equal variances not assumed			5.781	452.907	<.001	<.001	62.691	10.845	41.379	84.004
EstimatedTotalIntraCranialVol	Equal variances assumed	.010	.922	.650	636	.258	.516	7638.7788454	11749.7721558	-15434.2599993	30711.8176900
	Equal variances not assumed			.651	622.357	.258	.515	7638.7788454	11727.7443873	-15391.9666552	30669.5243459