

Supplementary material

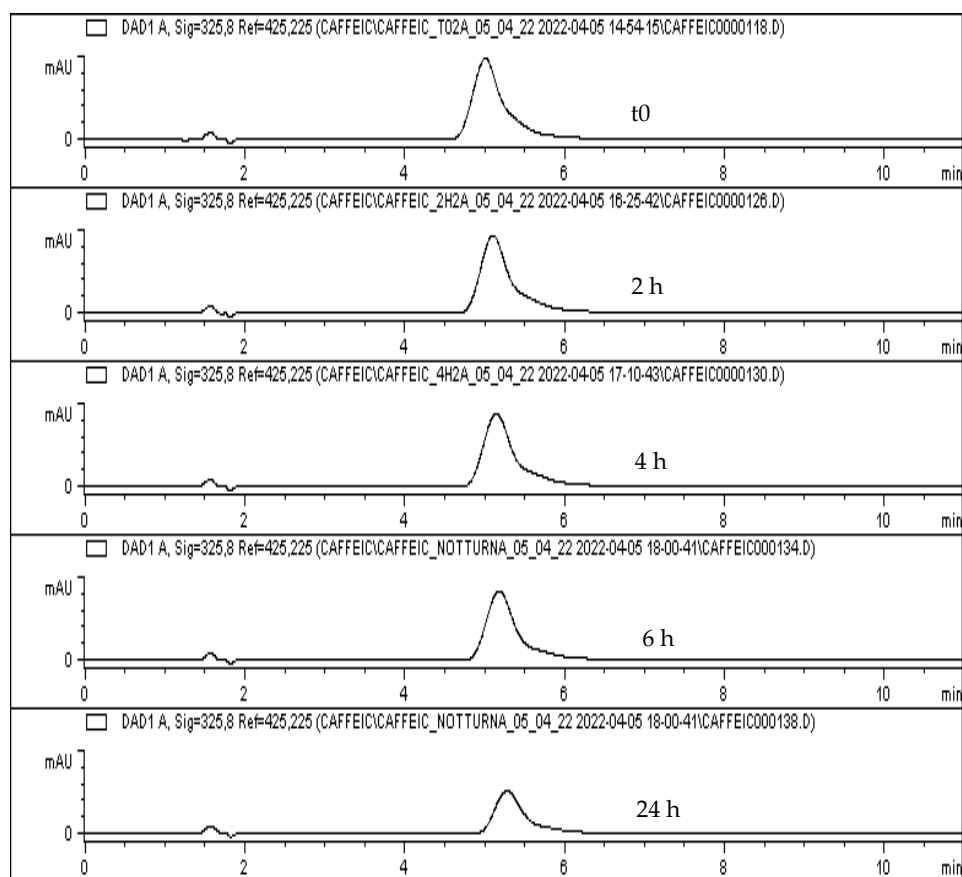


Figure S1. Chromatographic profiles obtained by RP-HPLC-DAD of caffeic acid using the dynamic intestinal model. The samples were injected at different digestion times. From top to bottom: undigested sample (t0), 2, 4, 6 and 24 h.

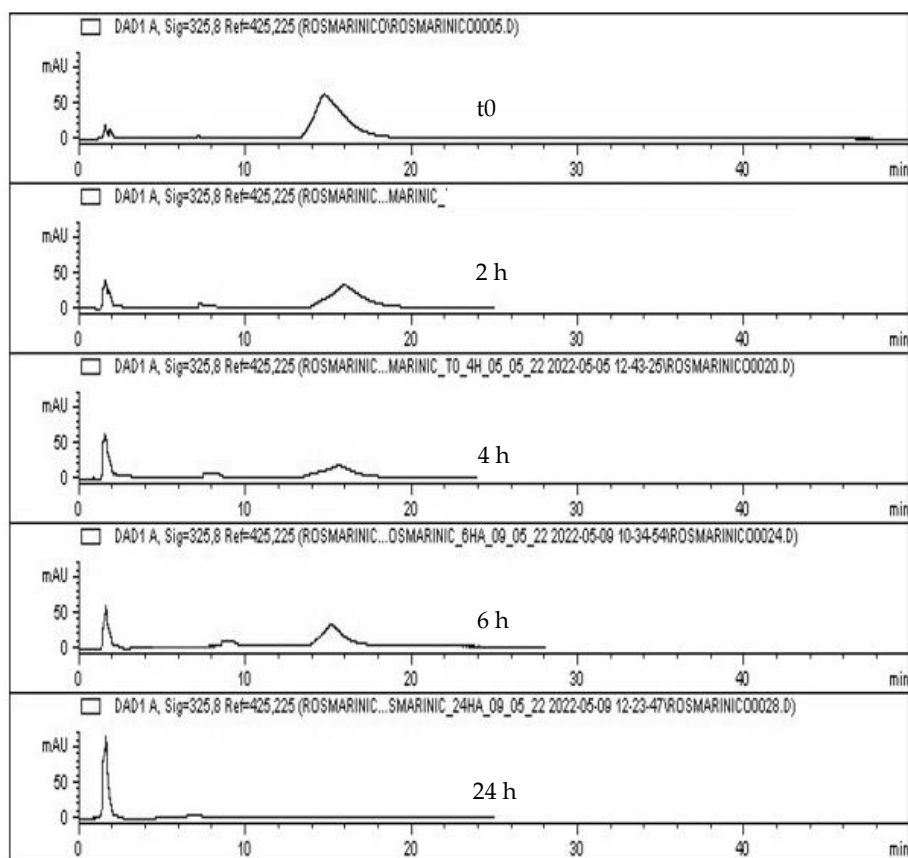


Figure S2. Chromatographic profiles obtained by RP-HPLC-DAD of rosmarinic acid using the dynamic intestinal model. The samples were injected at different digestion times. From top to bottom: undigested sample (t0), 2, 4, 6 and 24 h.

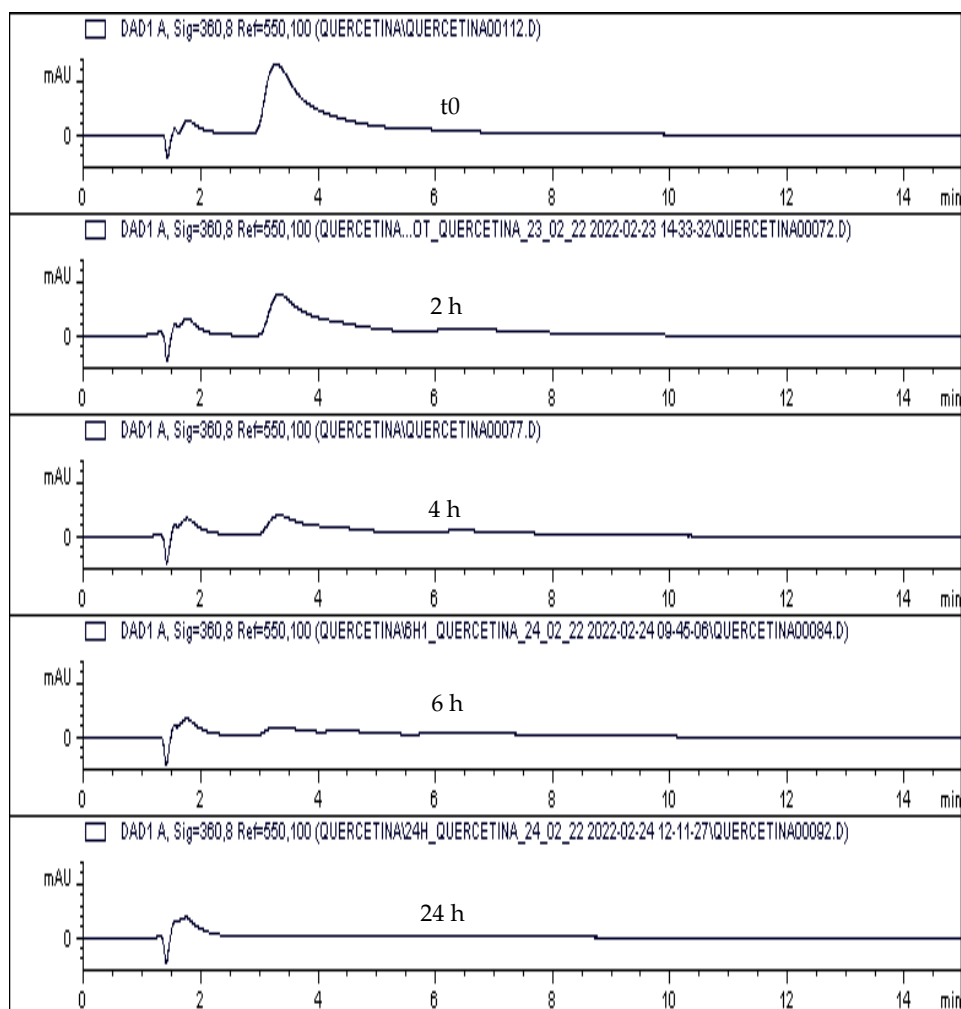


Figure S3. Chromatographic profiles obtained by RP-HPLC-DAD of quercetin using the dynamic intestinal model. The samples were injected at different digestion times. From top to bottom: undigested sample (t0), 2, 4, 6 and 24 h.

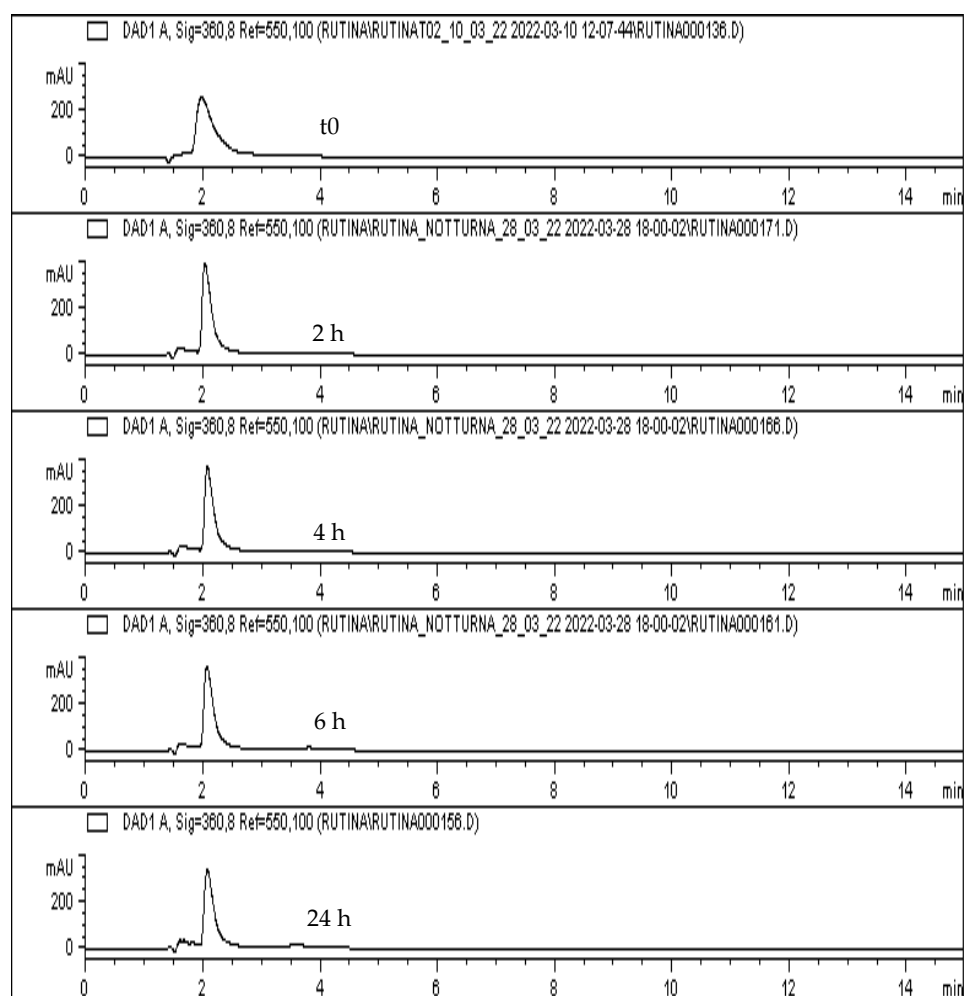


Figure S4. Chromatographic profiles obtained by RP-HPLC-DAD of rutin using the dynamic intestinal model. The samples were injected at different digestion times. From top to bottom: undigested sample (t0), 2, 4, 6 and 24 h.