

Supplementary Material

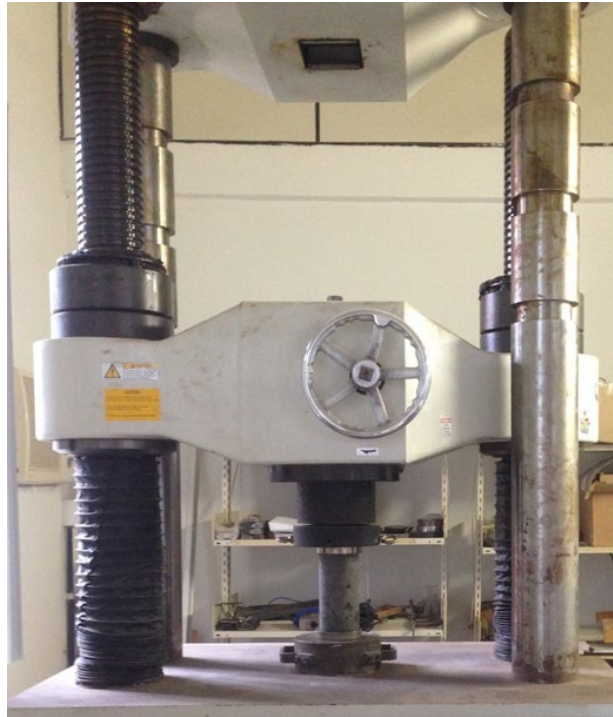


Figure S1. Concrete specimen during the compressive strength test.



(a)



(b)

Figure S2. Acid attack resistance test. (a) concrete sample tested (20 x 20 x 14 mm); (b) experimental setup.

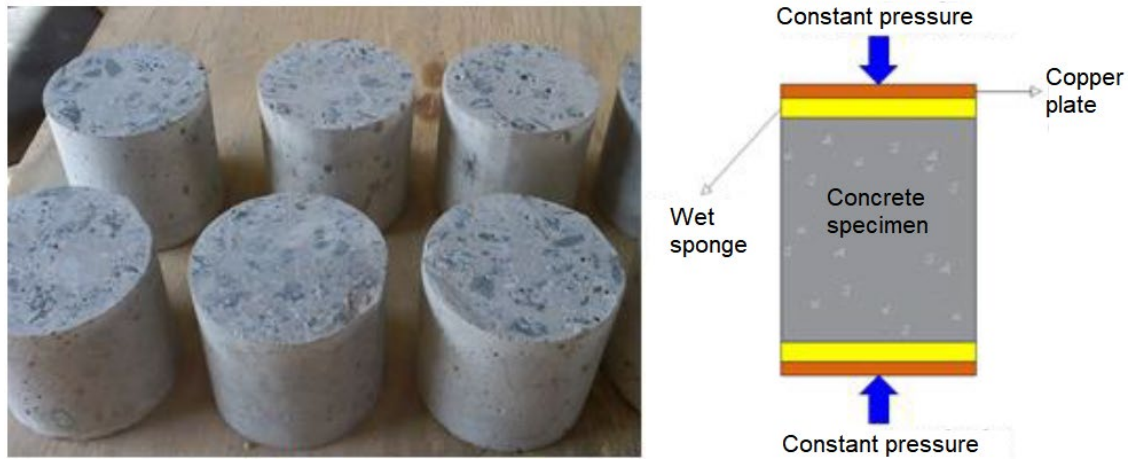


Figure S3. Concrete specimens and schematic illustration of the electrical resistivity test.

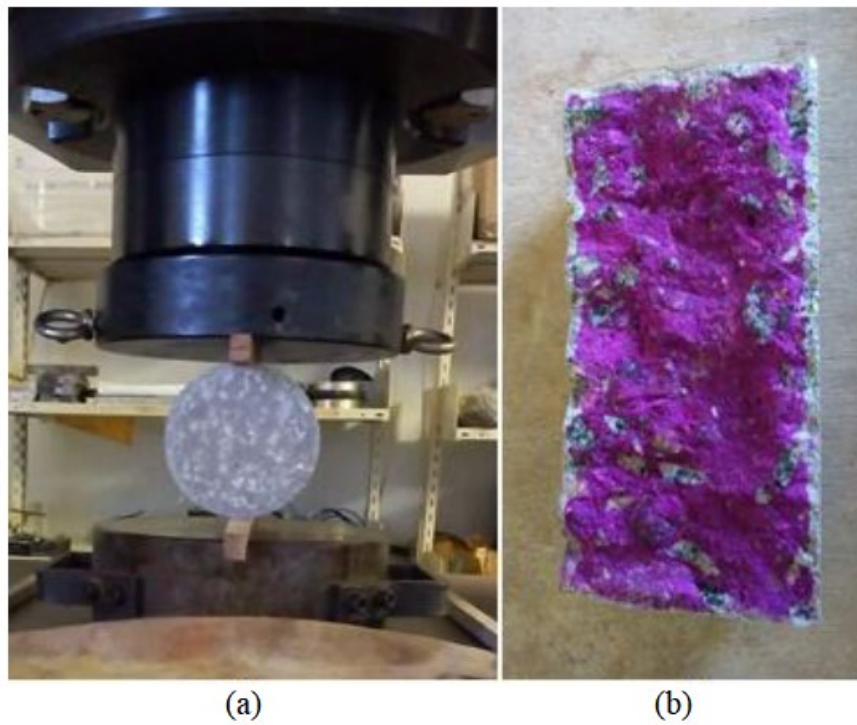


Figure S4. Carbonation depth test. (a) specimen splitting procedure; (b) phenolphthalein colorimetric method.