

Sample chromatogram

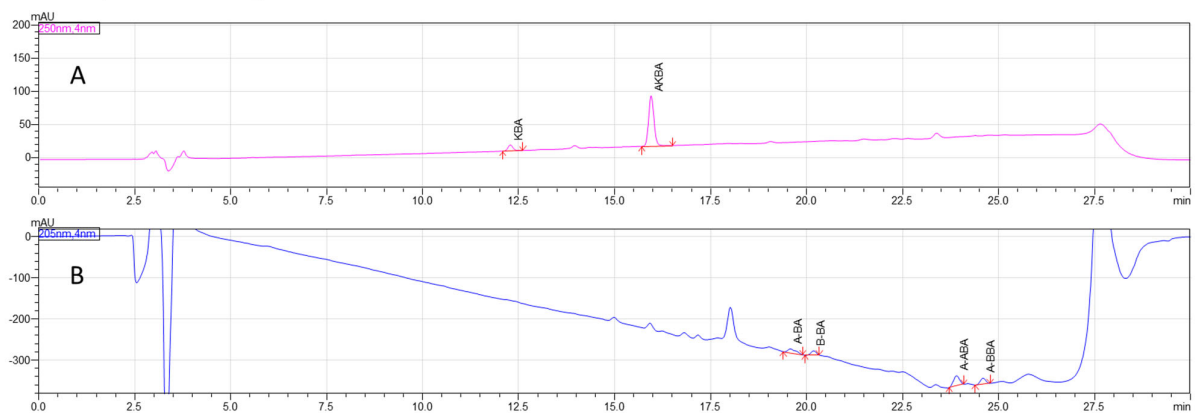


Figure S1. HPLC chromatogram registered at 250 nm (A) and 205 nm (B) for a sample of *B. carterii*

Standard chromatogram

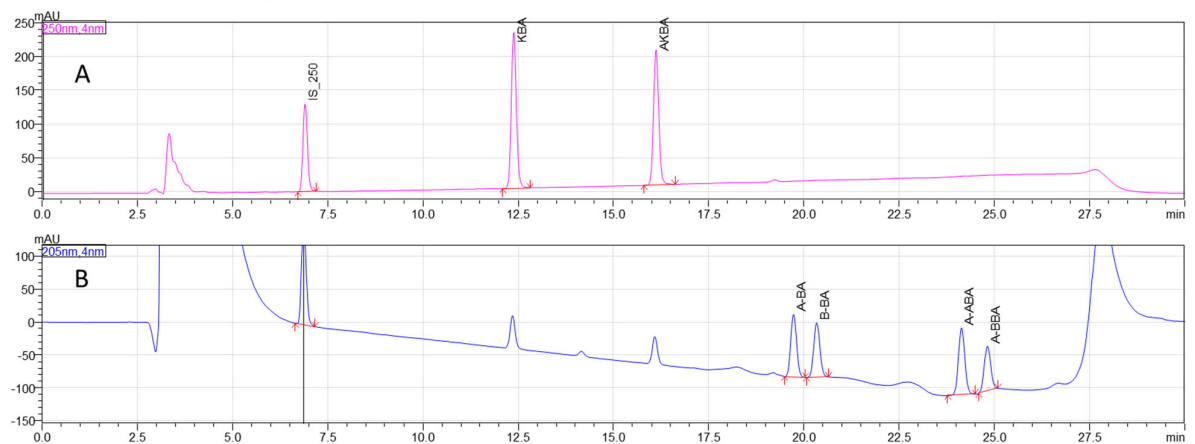


Figure S2. HPLC chromatogram registered at 250 nm (A) and 205 nm (B) for 50 mg/L standard mix

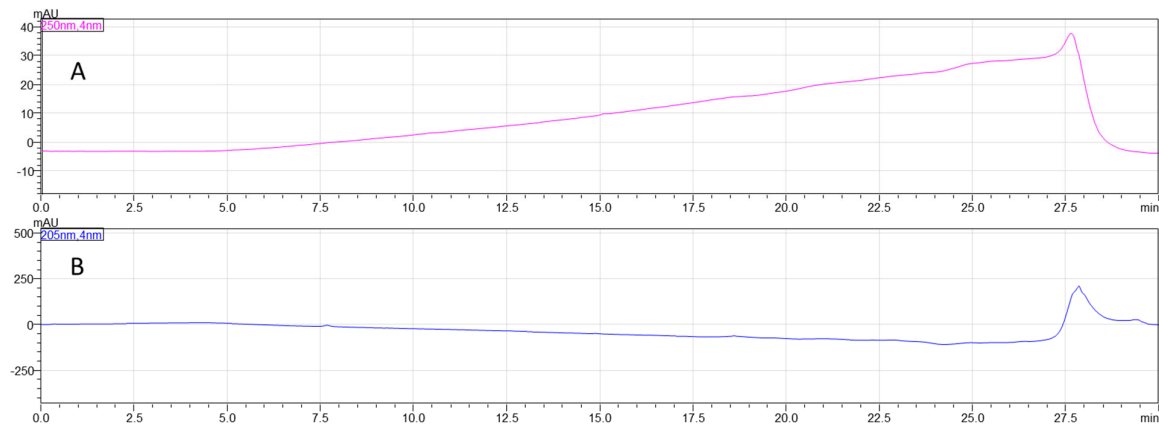


Figure S3. HPLC chromatogram registered at 250 nm (A) and 205 nm (B) for the blank