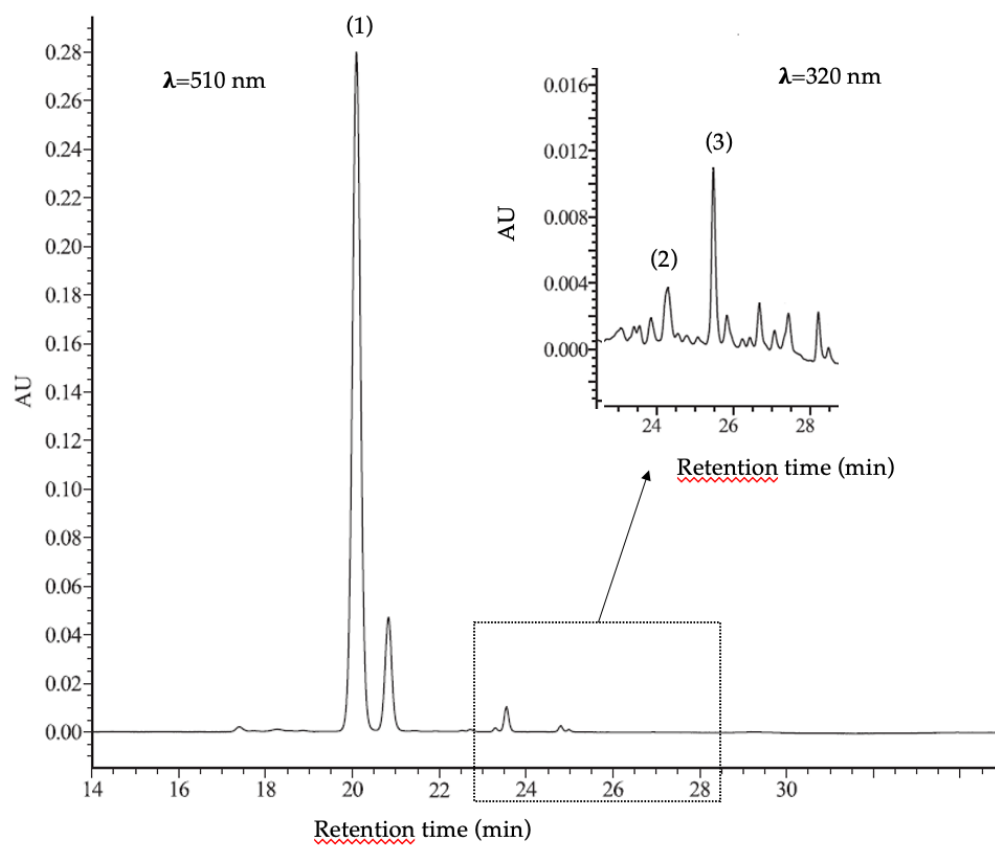


**Figure S1:** Metaphases with radioprotective and genotoxic biomarkers used in this study. (A) Metaphase with dicentric and acentric chromosomes. (B) Sister chromatid exchange (SCE). (C) Evaluation of mitotic index (MI), 3 nuclei and 1 metaphase. (D) Evaluation of proliferation index (PI) with metaphases (M1), second (M2) and third (M3) division.



**Figure S2:** Representative HPLC chromatogram of polypolyphenols of strawberries. (1) Pelargonidin-3-Glucoside, (2) Quercetin-3-Glucoside, (3) Ellagic acid.